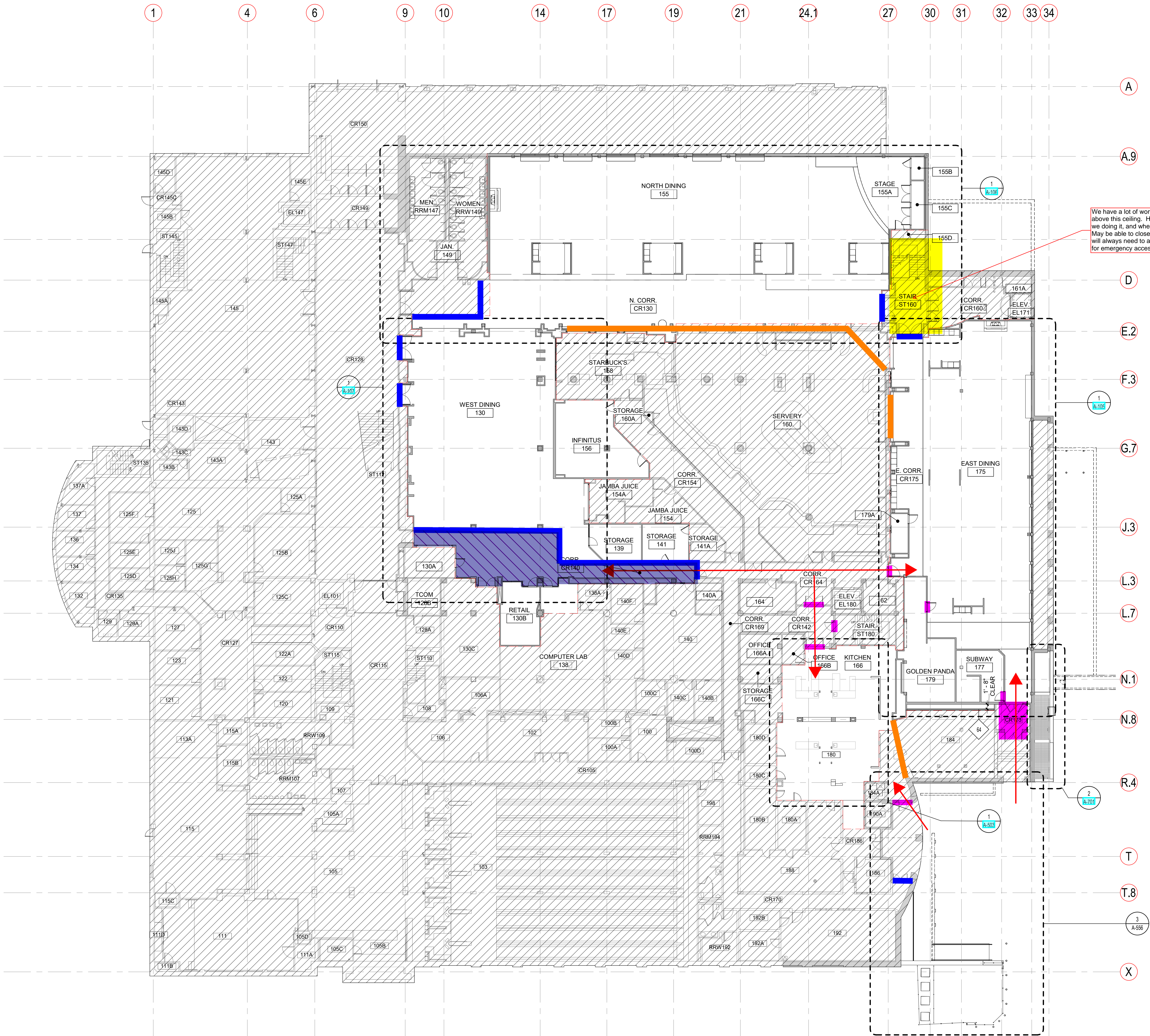


4/9/2025 10:20:35 AM
Autodesk Docs://20218.00 UMC Ceiling Replacements/20218 CU UMC Ceiling Replacements A21 External.rvt

1 LEVEL 1 OVERALL FLOOR PLAN
1/16" = 1'-0"



FINISH PLAN NOTES	
1	DIMENSIONS ARE TO FACE OF FINISH U.N.O.
2	SEE RCPs FOR ADDITIONAL FINISH INFORMATION.
3	FLOOR MATERIAL TRANSITIONS SHALL OCCUR AT THE CENTERLINE OF DOORS U.N.O.
4	FLOORING TO EXTEND UNDER COUNTERS, WORKSURFACES, APPLIANCES AND REMOVABLE BASE CABINETS.
5	PAINT TRANSITIONS TO OCCUR AT INSIDE CORNERS U.N.O.
6	PAINT ALL GYP BOARD CEILINGS P-01 U.N.O.
7	PAINT GYP BOARD WALLS P-02 U.N.O.
8	PAINT DOOR FRAMES TO MATCH EXISTING U.N.O.
9	BASE TO BE B-01 U.N.O.
10	PAINT EXPOSED CONDUIT, PIPING, ETC. TO MATCH ADJACENT FINISH.

FLOOR PLAN LEGEND	
	EXISTING WALL
	EXISTING WALL TO BE REMOVED
	NEW WALL
	AREA NOT IN CONTRACT
REFER TO SHEET G-000, GRAPHIC STANDARD FOR ADDITIONAL PLAN SYMBOL INFORMATION	

FLOOR PLAN NOTES	
1	EXTERIOR DIMENSIONS ARE TO FACE OF SHEATHING, FACE OF CONCRETE/MASONRY, COLUMN CENTERLINE, OR CENTERLINE OF WINDOW U.N.O.
2	INTERIOR DIMENSIONS ARE TO FACE OF STUD, FACE OF CONCRETE/MASONRY, OR COLUMN CENTERLINE U.N.O. DIMENSIONS DESIGNATED AS "CLEAR" OR "HOLD" SHALL BE MAINTAINED.
3	PARTITION TYPES INDICATED CONTINUE AROUND CORNERS U.N.O.
4	MAINTAIN CONTINUITY OF RATED PARTITIONS AT HEAD AND BOTTOM OF PARTITION AND AT JOINTS WITH DISSIMILAR PARTITIONS WITH LISTED JOINT ASSEMBLIES.
5	WHERE TWO DIFFERING PARTITION TYPES ABUT ALONG A CONTINUOUS LINE, THE CONTINUOUS FINISHED SURFACE OF THESE PARTITIONS SHALL ALIGN U.N.O.
6	WHERE MECHANICAL DUCTWORK PENETRATES A COMPONENT OF THE FIRE-RATED ASSEMBLY, PROVIDE FIRE AND/OR SMOKE DAMPERS IN ACCORDANCE WITH IBC CHAPTER 7 OR AS OTHERWISE PRESCRIBED IN THE MECHANICAL CODE.
7	PROVIDE 1/2" CLEARANCE FROM DUCTWORK FOR VIBRATION ISOLATION.
8	PROVIDE TEMPORARY DUST PROTECTION ON WALLS, FLOORS, AND OVER EXISTING EQUIPMENT AS REQUIRED DURING DEMOLITION AND CONSTRUCTION TO PROTECT EXISTING FURNITURE, EQUIPMENT AND FINISHES.
9	REFER TO MEP DRAWINGS FOR ADDITIONAL DEMOLITION SCOPE
10	REFER TO RCP DEMOLITION DRAWINGS FOR CEILING DEMOLITION
11	G.C. TO WORK WITH SEAN DAVIDSON OF OIT TO REMOVE AND REPLACE THE EXISTING ACCESS POINTS. ALL IT CABLING WILL NEED TO BE COMPLETED THOROUGH CU OIT STANDING ORDER CONTRACTORS.

- Hard barriers - either Stark walls or scaffold walls
- Plastic off opening
- Main access doors
- Full structural scaffolding so public and access below and trades can work on platform above

UMC - HVAC MAINTENANCE #UCB000247
UNIVERSITY OF COLORADO BOULDER
1669 EUCLID AVE BOULDER, CO 80309

PROJ. NO. 2020-426
DRAWN: OZ
CHECKED: LG
APPROVED: DJS
DATE: 04/09/2025

© OZ ARCHITECTURE

UMC - HVAC MAINTENANCE
#UCB000247
ISSUED FOR:
CONSTRUCTION
DOCUMENTS

SHEET TITLE:
LEVEL 1 OVERALL
FLOOR PLAN

SCALE: As indicated
SHEET NUMBER

A-101

