

# The Rocky Mountain Research Data Center

Jani Little, Executive Director

Steering Committee Meeting

Oct 17, 2016



- Committee Membership and Its Purpose
- What is an FSRDC and the FSRDC Program?
- Available Data and Ideas for Research
- The RMRDC
- The Proposal Process
- RMRDC Finances



## CU Boulder Representatives and Voting Members (VM)

Keith Maskus, PI

Myron Gutmann, Chair, Co-PI (VM)

Jason Boardman, Co-PI

Jani Little, Executive Director, Co-PI (VM)

\*Seth Spielman, Co-PI (VM)

### Faculty Associates:

\*Barbara Battenfield

\*Richard Rogers

\*Wolfgang Keller (VM)



<b>Other Representatives</b>	<b>Affiliations</b>
Aaron Porter	Colorado School of Mines
Anita Alves Pena (VM)	Colorado State University
Anne Alexander (VM)	University of Wyoming
Anne Libby (VM)	UC Denver   Anschutz Medical Campus
Dan Getman	National Renewable Energy Laboratory
Elizabeth Garner	State of Colorado
Emily Skop	UC Colorado Springs
Laura Argys (VM)	UC Denver   Main Campus
Leiwen Liang	National Center for Atmospheric Research
Markus Schneider	University of Denver



# Committee Purpose:

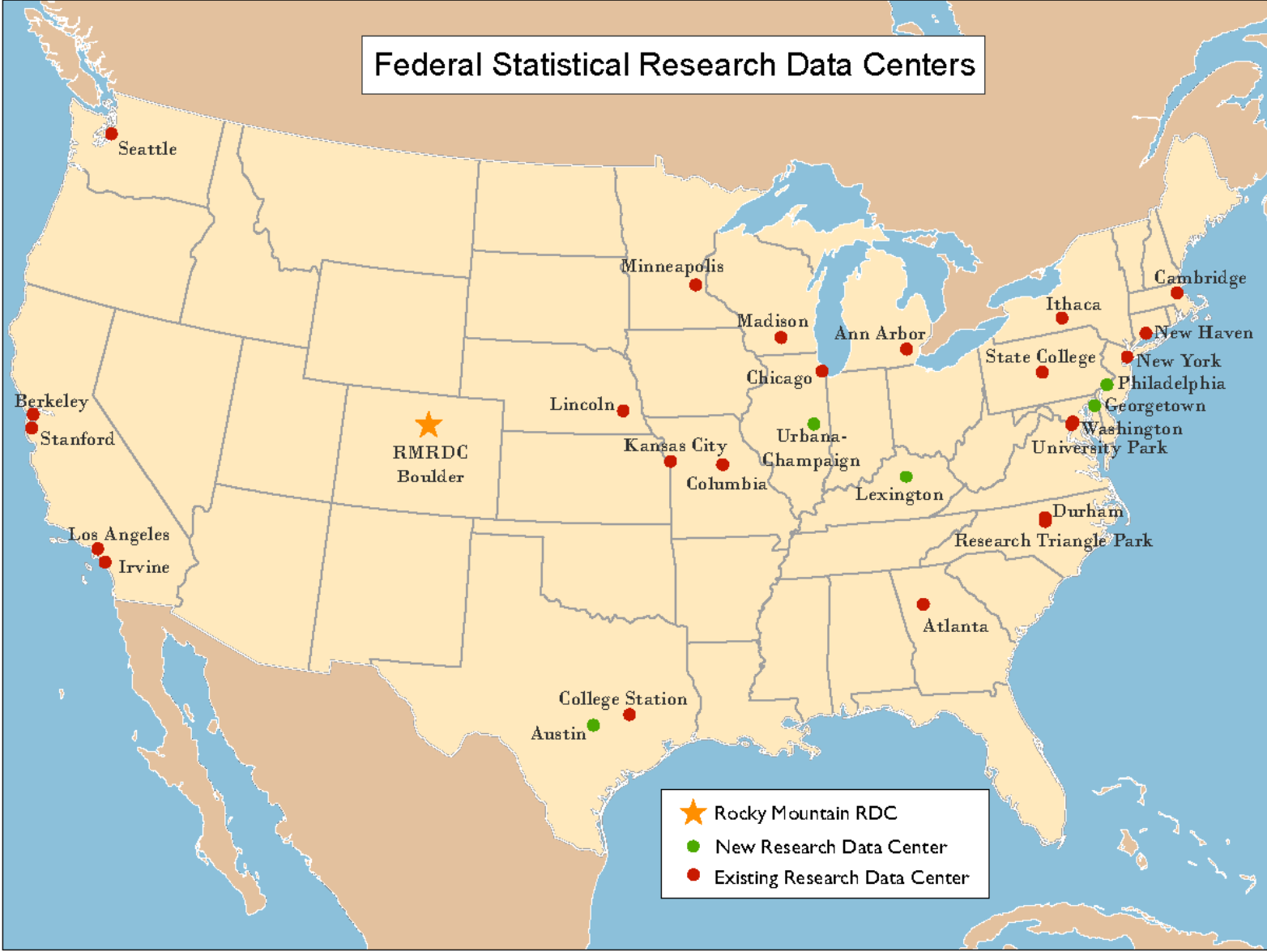
- 1) Set guidelines and policies for lab access and operation.
- 2) Promote the long-term interests and viability of the RMRDC by taking the lead in maintaining and enhancing support and participation from home institutions.
- 3) Solicit research proposals from researchers at home institutions.
- 4) Foster collaboration among potential RMRDC researchers and promote RMRDC sponsored events at respective institutions.
- 5) Annual review of research productivity, efficiency, and data security.
- 6) Annual review the Director's performance.



# What is a Federal Statistical Research Data Center (FSRDC)?

- A secure computing lab that is linked with the Census Bureau's internal computing network, which hosts restricted-access data from multiple federal agencies
- Made possible by a contractual agreement between a leading research institution and the U.S. Census Bureau
- The Census Bureau's Center for Economic Studies (CES) directs all FSRDCs and the FSRDC Program
- FSRDCs are managed by an on-site Census employee—the administrator—who guides researchers on proposal development, enforces security guidelines, and serves as liaison with the research community.

# Federal Statistical Research Data Centers



## Recent Advances in the FSRDC Program:

- Expanding Participation by Federal Statistical Agencies
- More Efficient Administration of Program
- Bipartisan Commission on Evidence-Based Policymaking





## Federal Statistical Agencies

<b>Bureau of Census</b>	<b>Economic Research Service</b>
<b>National Center for Health Statistics</b>	<b>Bureau of Justice Statistics</b>
<b>Bureau of Labor Statistics</b>	<b>National Center for Science and Engineering Statistics (National Science Foundation)</b>
<b>National Center for Education Statistics</b>	<b>Statistics of Income Division (Internal Revenue Service)</b>
<b>National Agricultural Statistics Service</b>	<b>Bureau of Transportation Statistics</b>
<b>Energy Information Administration</b>	<b>Office of Research, Evaluation, and Statistics (Social Security Administration)</b>
<b>Bureau of Economic Analysis</b>	



# Advantages to Researchers and Their Institutions:

- Greatly expands the policy and basic questions that can be addressed
- Improves competitive edge for grants and publications
- Improves graduate education (big data/statistical techniques) and placement
- Attracts and retains top researchers and scholars
- Serves as a “hub” that attracts leading researchers to visit and collaborate
- Fosters a vibrant regional research community in the Rocky Mountains
- Fosters collaboration with researchers near other FSRDCs



# FSRDCs Used to Address Many Research Topics

- Business, Trade, Finance, and Management
- Crime and Crime Victimization
- Demography, Population Distributions and Trends, Migration, and Immigration
- Economics, Labor Markets, Entrepreneurship, Employment and Industry
- Education and Education Policy
- Hazard Mitigation, Environmental Impact Assessment, Pollution Abatement
- Health and Well-Being, Health Insurance, Health Policy
- Housing, Housing Markets, and Residential Patterns
- Poverty and Social Welfare Policy
- Transportation Analysis and Planning
- Urban and Regional Economics and Planning
- Energy Efficiency in Manufacturing

# Advantages Provided to Research?

--Microdata not available publicly

    firms and establishments

    individuals and households

--Variables not available in public versions of data sets

    (e.g., low level geography)

--Full population counts or larger samples (Decennial Census, ACS, CPS)

--Full range of response items (e.g., industry codes, detailed race answers, income is not top-coded, etc.)

--Ability to make linkages

    with external data (e.g., via geocodes, establishment ID, etc.)

    between multiple internal data sets via non-public link keys

# Major Partners in the FSRDC System

- U.S. Census Bureau
  - [Economic Data](#)
  - [Demographic Data](#)
  - [Longitudinal Employer-Household Dynamics \(LEHD\) Data](#)
- [Bureau of Labor Statistics \(BLS\)](#)
- [National Center for Health Statistics \(NCHS\)](#)
- [Agency for Healthcare Research and Quality \(AHRQ\)](#)
  - [Other Federal Partners](#)

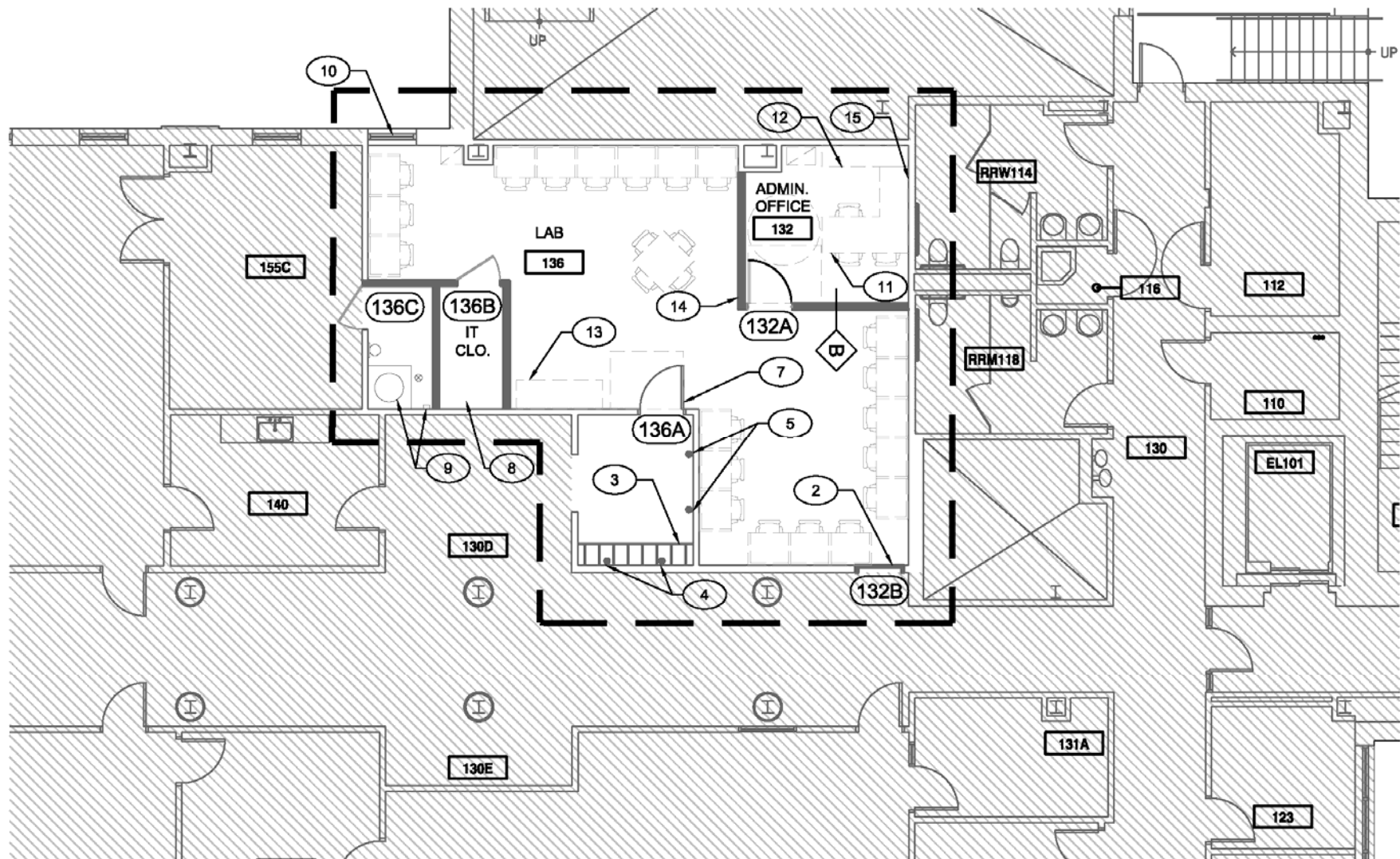
# RMRDC: The Physical Facility

**Projected Opening Date:** March 1, 2017

**Location:** IBS Rms 132+136

- 10 thin client workstations to access FSRDC servers
- Secure communications that tunnel over campus internet
- Contains the Administrator's office
- Badge Reader at Entrance
- 24/7 Security System with camera
- no electronic devices allowed
- NOTHING leaves the secure lab without approval





# Katie Genadek, Administrator

Expected Start Date: Nov 28, 2016

Ph.D. Applied Economics, University of Minnesota, 2012

IPUMS USA Project Manager

Manager of User Support for Integrated:

NHIS, DHS

CPS, ACS

IPUMS International





# Requirements for Using Any FSRDC:

- Research projects must undergo a formal approval process with the agency that owns the data, e.g., Census, NCHS, BLS
- Researchers must go through a background investigation that qualifies them for “Special Sworn Status” which makes them an unpaid Census Bureau employee.
- Projects using Census data must provide benefits to the Census Bureau (PPS). All projects must show scientific merit and feasibility.
- Results must be formally reviewed for disclosure violation before they leave the secure facility.



# How and When Do I Get Started?

- See materials at the RMRDC website, the CES website, and other relevant sites.
- Contact the RMRDC Director and Administrator for
  - data availability
  - project budget and timeline
  - contact information

For Census projects, the Administrator will give invaluable guidance on

- the proposal development process
- the benefits to Census (PPS)
- help navigate the project approval process



# Differences between Census and NCHS Proposals:

	Census Proposals	NCHS Proposals
Approval %	70	nearly 100
Time to Approval	3-4 months on average	less on average
Predominant Purpose Statement (PPS)	Required	Not Required
Data Extract Fee	None	\$1200
Scope	Broad as Possible	Precise



# FSRDC Server Software

Gauss

Stata

Matlab & toolboxes

PBS Pro

Intel Composer XE

NX Enterprise

R

SAS

SAS (Dataflux)

SUDAAN

GEODa

Tomlab

Knitro

Madd

QGIS

StatTransfer

Python - Anaconda

Fortran

Perl

Tex/LaTex



**RMRDC**

Rocky Mountain Research Data Center  
[www.colorado.edu/rocky-mountain-research-data-center](http://www.colorado.edu/rocky-mountain-research-data-center)

# How is the RMRDC Funded?

## Costs:

\$300,000 annual operations

\$250,000 initial construction

## Contributions:

NSF 3-year award

CU Boulder Administration

IBS in kind

Consortium Partners

Funded Research and External Researchers



		<b>Proposed 3-year Budget</b>		
		<b>7/1/16 - 6/30/19</b>		
		<b><u>Year 1</u></b>	<b><u>Year 2</u></b>	<b><u>Year 3</u></b>
Construction costs		\$250,000		
	Lab Furniture	\$25,000		
	Wiring and IT	\$10,000		
Service Contract Census Bureau		\$50,000	\$50,000	\$50,000
Travel		\$2,000	\$3,000	\$3,000
Supplies/Marketing/Seminars		\$2,000	\$2,000	\$2,000
Monitors, Computer, Printers		\$4,000	\$2,000	\$2,000
Executive Director Salary (30%)		\$34,000	\$35,192	\$36,248
Senior Administrator Salary (50%) GS13-10		\$68,833	\$121,540	\$125,186
	Training	\$5,000		
Junior Administrator Salary (50%) GS11-1			\$63,691	\$65,602
	Training		\$5,000	
	Tuition		\$10,530	\$10,530
Disclosure Officer Payments		\$5,000	\$10,000	\$15,000
<b>Total Costs</b>		<b>\$455,833</b>	<b>\$302,953</b>	<b>\$309,566</b>

		<b>Expected 3-year Contributions</b>		
		<b>7/1/16 - 6/30/19</b>		
<b>Contributions per year:</b>		<b><u>Year 1</u></b>	<b><u>Year 2</u></b>	<b><u>Year 3</u></b>
	NSF Direct	\$67,107	\$79,955	\$79,362
	CU Boulder Provost Infrastructure	\$204,000		
	CU Boulder OVCR	\$125,000	\$100,000	\$100,000
	CU Provost	\$25,000	\$50,000	\$50,000
	UC Denver and Anschutz	\$35,000	\$35,000	\$35,000
	CSU	\$27,900	\$27,900	\$27,900
	U Wyoming	\$18,600	\$18,600	\$18,600
<b>Total Contributions:</b>		<b>\$502,607</b>	<b>\$311,455</b>	<b>\$310,862</b>
	Total Contrib-Total Costs	<b>\$46,774</b>	<b>\$8,502</b>	<b>\$1,296</b>

# The RMRDC Consortium

## Partner Members:



University of Colorado  
Boulder



Denver



Anschutz



UNIVERSITY  
OF WYOMING

## Supporting Members:

UC Colorado Springs

Colorado State Government

Colorado School of Mines

Denver University

National Center for Atmospheric Research

National Renewable Energy Laboratory



Partner Members  
Faculty, Grad Students, and Affiliated  
Researchers

Free access to RMRDC services and secure  
laboratory



# Costs to Supporting Members to become a Partner Member?

\$15,000 annual contribution or 1 external project



# Costs Charged to Consortium Partners with Funded Projects?

\$15,000 per project per year?

