



- CIREs (Expires 04/30/23)
- A&P Construction (Expires 7/31/23)
- Lambda Metrics (expires 9/31/22)
- Century Environmental (Expires 10/31/21)
- Encore Electric (Expires 12/31/ 21)
- Facilities Management (Expires 11/30/22)
- Guarantee Electric (Expires 3/31/ 22)
- Legacy Mechanical (Expires 9/30/22)
- MTech Mechanical (Expires 4/30/22)
- Risk Removal (Expires 6/30/23)
- Space Science Institute (Expires 8/31/22)
- VTI Security (Expires 3/31/22)
- Sun Construction (Expires 5/31/22)
- US Engineering (Expires 4/30/22)
- Arlington Electrical Services (Expires 3/31/22)
- Not Rentable

RESEARCH LAB #2 BASEMENT LEVEL

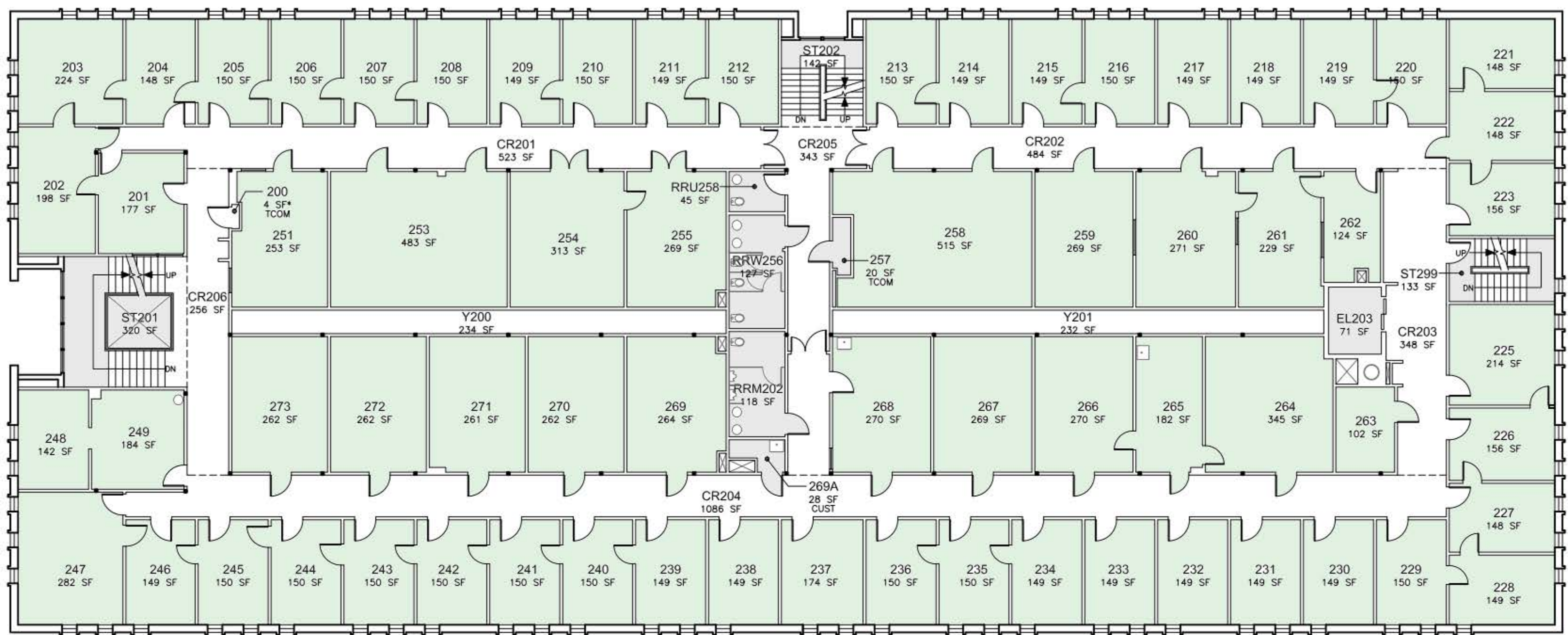


DOOR AT LANDING BETWEEN FLOORS 1 & 2



- Real Estate Services
- CIRES (Expires 12/31/23)
- Facilities Management (Expires 10/31/23)
- Not Rentable

RESEARCH LAB #2 - FIRST FLOOR

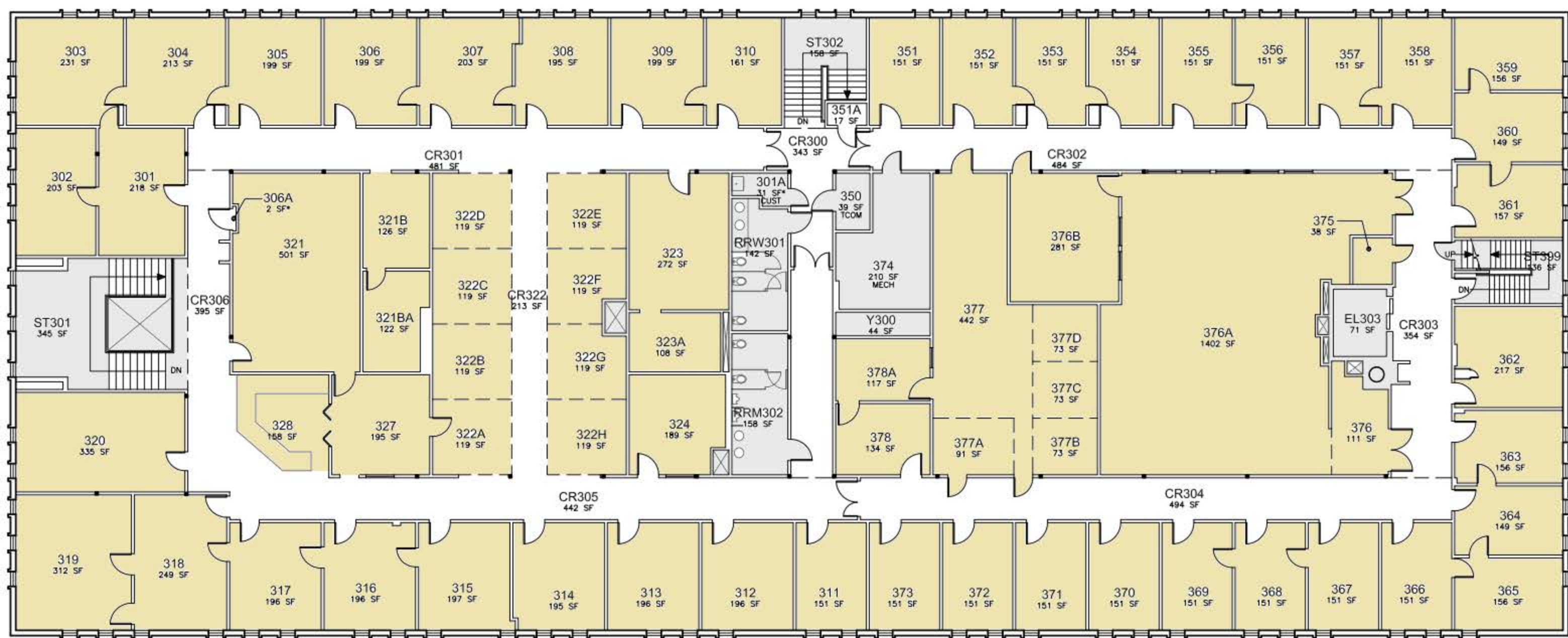


RESEARCH LAB #2 - SECOND FLOOR

CIREs (Expires 12/31/23)

Not Rentable





- Facilities Management (Expires 10/31/23)
- Not Rentable

RESEARCH LAB #2 - THIRD FLOOR

