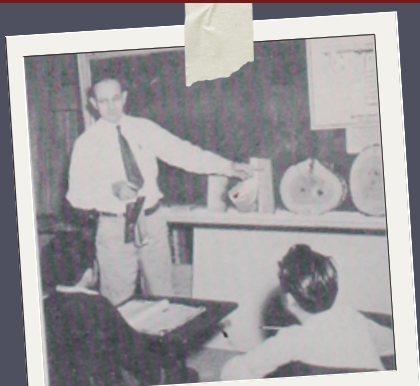


LEARNING BEHIND BARBED WIRE: A LOOK AT SCHOOLS IN A JAPANESE AMERICAN INCARCERATION CAMP DURING WORLD WAR II

A WEBINAR FOR K-12 TEACHERS

THURSDAY, FEBRUARY 12, 2026

7pm ET - live on Zoom



Join TEA's graduate student assistant and PhD candidate in Music Education, Christy Go in exploring her research on K-12 education at Amache—one of the 10 Japanese American Incarceration Camps during World War II. This webinar will provide educators a look into the school structure and daily lives of K-12 students, as well as the reciprocal impact of Amache schools and the community inside and outside the camp.

We will discuss possibilities for:

- Guiding learners about this historical event through the lens of Amache students
- Engaging students in critical conversations about the incarceration and its impacts on children and young people

REGISTER ONLINE:

tinyurl.com/TEAcourseregistration



For inquiries:

TEA Director Lynn Kalinauskas
lynn.kalinauskas@colorado.edu