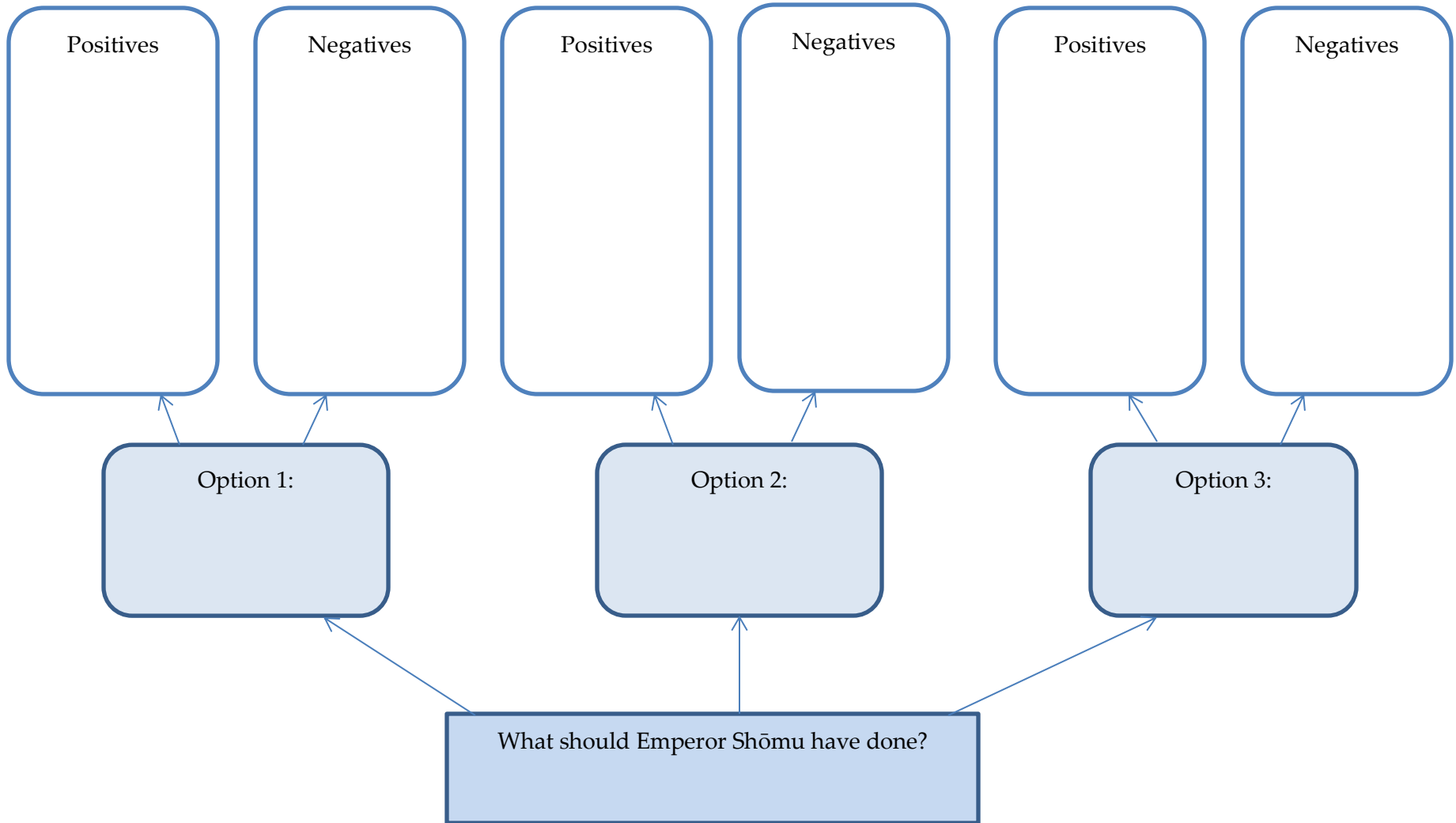


## Decision Tree Template

---



## Tōdai-ji Decision Tree Rubric

1=not present; 2=minimally present; 3=adequately present;

4=mostly present; 5=completely present, excellent work

CRITERIA	1	2	3	4	5
<b>Decision Tree</b>					
Includes three legitimate alternatives					
Identifies multiple positive effects for each alternative					
Identifies multiple negative effects for each alternative					
Covers economic aspects of the various alternatives					
Covers political aspects of the various alternatives					
Covers cultural aspects of the various alternatives					
Covers religious aspects of the various alternatives					
Demonstrates understanding of basic Buddhist beliefs					
Demonstrates understanding of a ruler's need for political legitimacy					
Demonstrates understanding of opportunity cost					
Demonstrates understanding of resources needed to build Tōdai-ji					
<b>Written Explanation</b>					
Clearly identifies which alternative the student selected					
Clearly explains why the alternative chosen is the best option					
Explains why the other alternatives were not the best option					
<b>Both</b>					
Use accurate information from the available sources					
Attribute information to specific sources					

### Comments: