

New Student

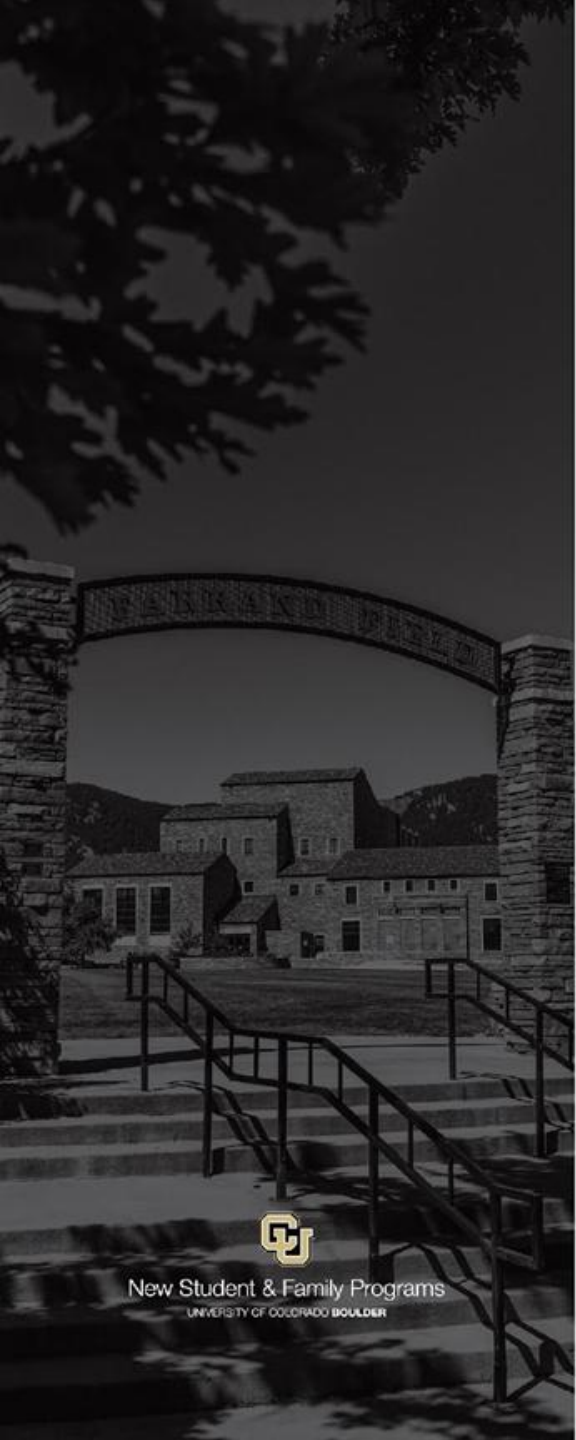
ORIENTATION



New Student & Family Programs

UNIVERSITY OF COLORADO BOULDER

Student Philanthropy at CU




New Student & Family Programs
UNIVERSITY OF COLORADO BOULDER



<http://www.colorado.edu/student-philanthropy>

Forever**Buff**s®


THE HERD
LEADERSHIP COUNCIL

Involvement Overview

Recreation and Wellbeing

Service Learning and Impact in Community Engagement

Center for Student Involvement

Fraternity and Sorority Life



Team Sports

A program of Recreation and Wellbeing



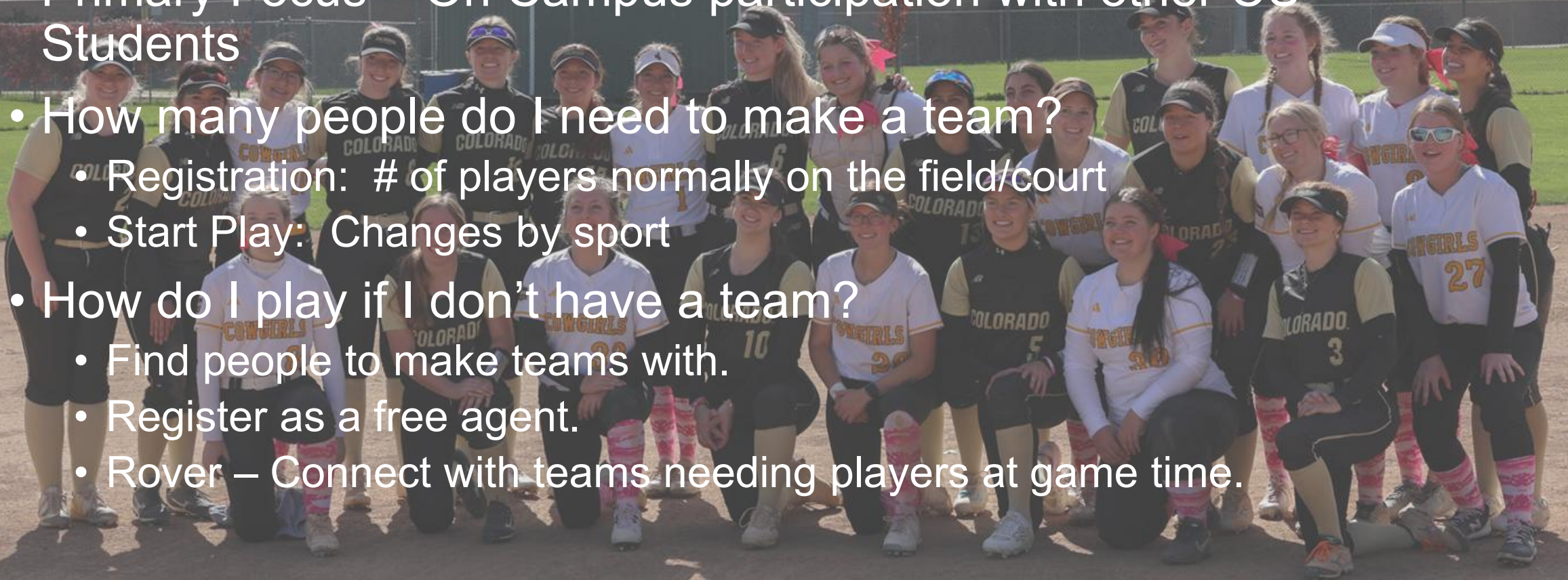


What is Team Sports?

- A combination of two programming areas
 - Intramural Sports
 - 2 activity sessions per semester
 - Multi-week leagues and single-day events
 - CU Sport Clubs
 - 30 clubs
 - 45 teams
 - 70+ national championships

All about Intramural Sports

- Primary Focus – On Campus participation with other CU Students
- How many people do I need to make a team?
 - Registration: # of players normally on the field/court
 - Start Play: Changes by sport
- How do I play if I don't have a team?
 - Find people to make teams with.
 - Register as a free agent.
 - Rover – Connect with teams needing players at game time.



A photograph of ice hockey players on a rink. In the foreground, several players in green jerseys with "Colorado State" and a ram logo are visible. One player in a white jersey with the number 19 is in the center. The background shows the rink's glass and other players. The text "All About Sport Clubs" is overlaid on the left side.

All About Sport Clubs

- Primary Focus – Varies by club
 - High level intercollegiate competition – Not quite varsity, but more than IM
 - Most programs compete nationally.
- Club Membership can vary
 - Some clubs are open to all to join
 - Some clubs are only accessible by tryout
- Heavy Time Commitments
 - Weekly practices
 - Weekly travel

Highlighting the Differences

The background image shows two lacrosse players in action on a field at night. The player in the foreground is wearing a black jersey with the number 18 and is holding a lacrosse stick with a green ball. The player in the background is wearing a black jersey with the number 62 and is also holding a lacrosse stick. Both players are wearing helmets and gloves. The field is illuminated by stadium lights, and the background is dark.

- Level of Competition
- Time Commitment
 - IM – Approximately 1 hour per week for 1 sport.
 - Clubs – 3+ hours per week.
- Costs of Participation
 - IM Pass
 - \$25 for a semester pass
 - \$45 for a fall/spring pass
 - Clubs
 - Heavily dependent on club activity level.
 - Costs set by individual clubs
 - Dues range from \$100 - \$5000+ annually

Come work with us!



Get started with CU Team Sports

Download the Fusion Play App!

Find our Sport Clubs here!



SLICE



Service Learning & Impact
in Community Engagement
UNIVERSITY OF COLORADO BOULDER

SKO! serve!

About

- Sends teams of college students to engage in meaningful service projects over college breaks.
- Provides students with the opportunity to explore the United States all while making a difference through service.

Experience

- Spans either weekend, winter or spring break trips
- First-Year Service Experience
- Led by two “site leaders” and has 10 participants
- All trips are drug, alcohol and tobacco-free

go
all
in





Join us for the inaugural year of **Buff's Big Event** on Saturday, Oct. 10!

A large-scale day of service that brings Buffs together to express gratitude for the support of the Boulder community. Work alongside the community to beautify spaces, clean up yards and provide hands on support in many other ways.

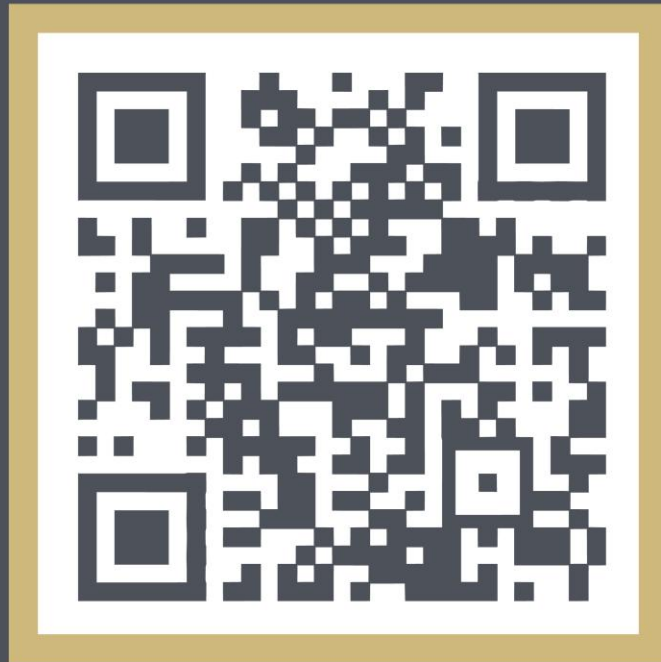
Registrations for individuals and groups will open in August!

CU serves

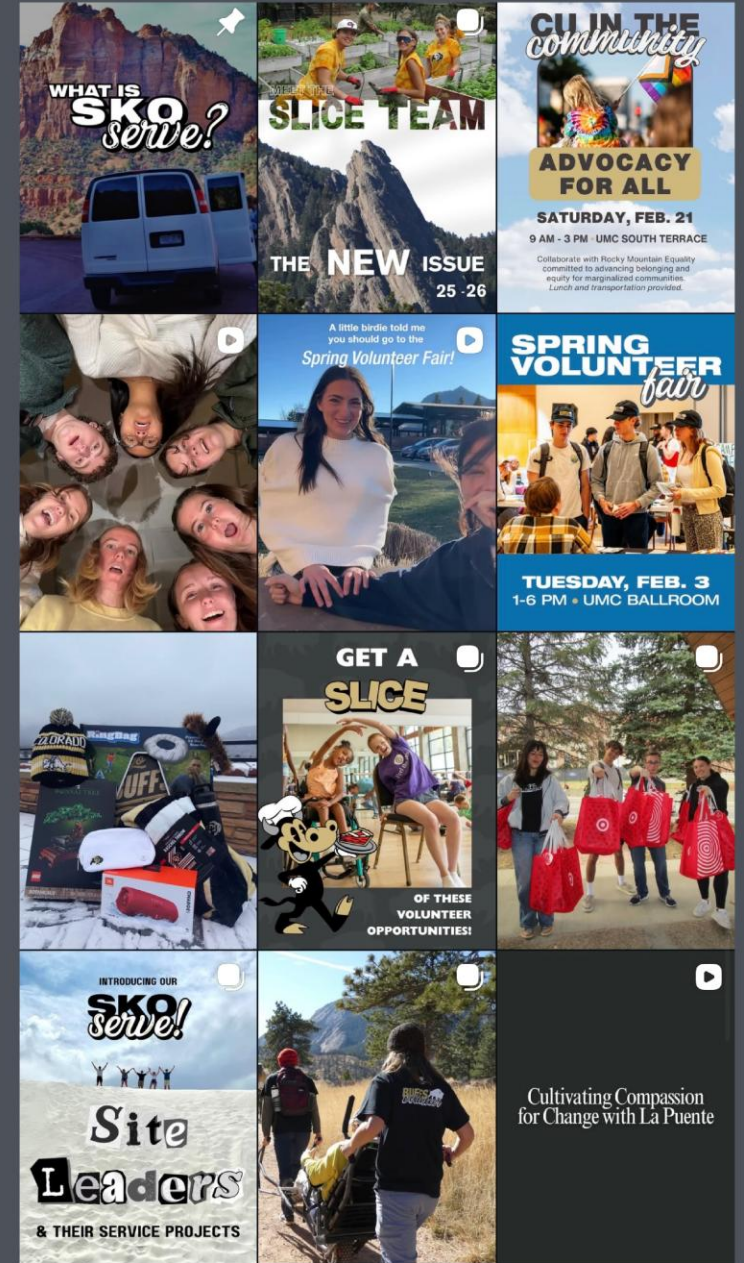


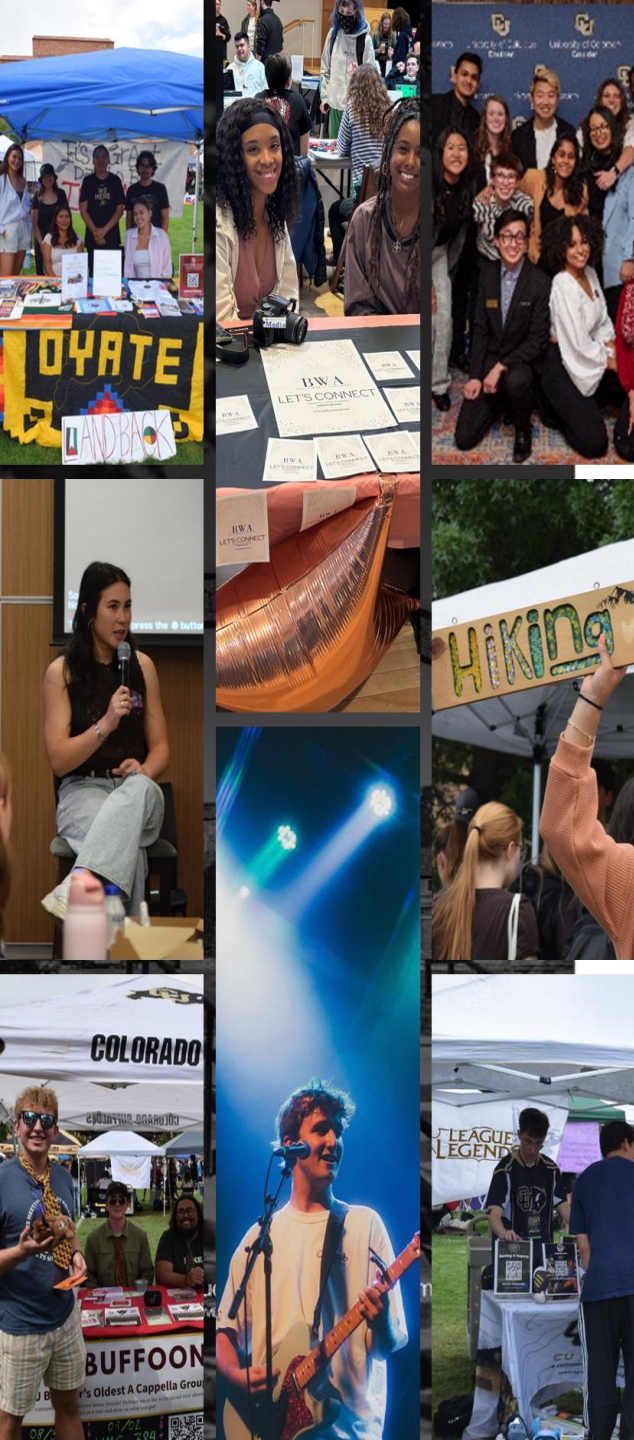
To find volunteer opportunities, track impacts, create community, make friends and monitor engagement, visit colorado.edu/volunteer/cuseserves

Receive updates about upcoming events, see our volunteers in action on Instagram!



@CUBOULDERSERVES





Center for Student Involvement

We support every student to design their own involvement journeys, creating pathways for meaningful connections.

With students as co-creators, we cultivate experiences and communities that shape learning, inspire transformation, and form lasting memories.

yeah okay but, like...
HOW?

Student Organizations

500 Clubs & Organizations

Arts, Music, Entertainment

Business

Community Service & Volunteerism

Cultural & International

Engineering & Technology

Environmental

Gaming

Government & Politics

Honor Society

Humanities

Law & Law School

Recreation & Wellness

Religion and Spirituality

Science & Mathematics

Social

Social Justice & Advocacy



Student Organizations

500+ Recognized Student Organizations & Recognized Social Greek Organizations across several categories of interests!

- Arts, Music, Entertainment
- Business
- Community Service & Volunteerism
- Cultural & International
- Engineering & Technology
- Environmental
- Gaming
- Government & Politics
- Honor Society
- Humanities
- Law & Law School
- Recreation & Wellness
- Religion and Spirituality
- Science & Mathematics
- Social
- Social Justice & Advocacy



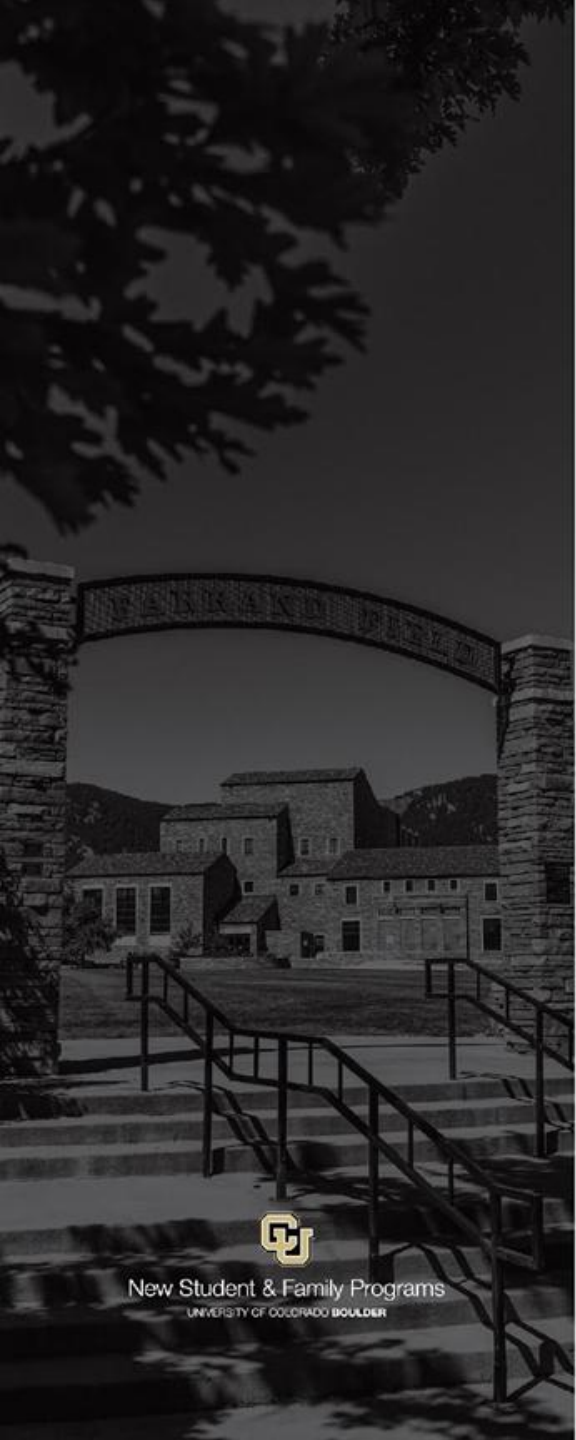
Student Leadership Boards



Distinguished Speakers Board
UNIVERSITY OF COLORADO **BOULDER**



**PROGRAM
COUNCIL**



New Student & Family Programs
UNIVERSITY OF COLORADO **BOULDER**

Gaming & Esports

Alienware Buffalo Esports & Gaming Lounge

- State-of-the-art Alienware gaming stations
- 150+ games & applications
- Broadcasting/Livestreaming production
- Open play & free gaming events every week
- 7 intercollegiate competitive esports titles
- Casual gaming community
- Professional development in production, marketing, and community-building





FRATERNITY & SORORITY LIFE



Fraternity & Sorority Life
UNIVERSITY OF COLORADO **BOULDER**

College Panhellenic Council

11 Chapters:

- Alpha Chi Omega
- Alpha Phi
- Chi Omega
- Delta Delta Delta
- Delta Gamma
- Gamma Phi Beta
- Kappa Alpha Theta
- Kappa Beta Gamma
- Kappa Kappa Gamma
- Phi Sigma Rho
- Pi Beta Phi

Total Membership:

4683



Interfraternity Council

10 Chapters:

- Beta Theta Pi
- Delta Tau Delta
- Lambda Chi Alpha
- Phi Delta Theta
- Phi Kappa Sigma
- Sigma Alpha Mu
- Sigma Chi
- Sigma Phi Epsilon
- Triangle
- Zeta Psi

Total Membership:

615



Understanding Affiliation

CU Boulder recommends that students interested in participating in Greek life join an affiliated organization. There are fraternities in Boulder that are not recognized by the university. A chapter may voluntarily or involuntarily choose to not be affiliated.

These organizations do not receive the benefits that affiliated fraternities receive. FSL has invited the fraternities in the Boulder community that are not members of CUIFC to affiliate with the university and follow all university policies.

Multicultural Greek Council

9 Chapters:

- Beta Gamma Nu Fraternity, Inc.
- Kappa Delta Chi Sorority, Inc.
- Lambda Theta Alpha Latin Sorority, Inc.
- Lambda Theta Phi Latin Fraternity, Inc.
- Pi Lambda Chi Sorority, Inc.
- Sigma Lambda Beta International Fraternity, Inc.
- Sigma Lambda Gamma National Sorority, Inc.
- Sigma Psi Zeta Sorority, Inc.
- Tau Psi Omega Fraternity, Inc.

Total Membership:

111



National Pan-Hellenic Council

2 Chapters:

- Alpha Kappa Alpha Sorority, Inc.
- Kappa Alpha Psi Fraternity, Inc.

Total Membership:

6



Recruitment and Membership Intake



Stay Connected

Center for Student Involvement

involvement@colorado.edu

Fraternity and Sorority Life

fsl@colorado.edu

Service Learning and Impact in Community Engagement

slice@colorado.edu

Recreation and Wellbeing

clubsports@colorado.edu

