

BUILDING COMMUNITY RESILIENCE

BEST PRACTICES IN DISASTER RECOVERY & AFFORDABLE HOUSING

Prepared by Shane Casey, Carly Croft, and Cassidy Davenport



Coal Creek Crossing neighborhood reconstruction - 2 years after the Marshall Fire

PURPOSE

Following the Marshall Fire in 2021, Boulder County Housing Authority (BCHA) recognized an emerging need to develop fire resilient housing and to engage with disaster affected communities. Through a combination of high level research in wildfire resilience and a close study into a dozen case studies across the country, our capstone team worked to identify best practices in firewise design, lessons learned from disaster at the community level, and engagement strategies to support recovery across a broad range of experiences.

To support the ongoing housing needs of currently underserved residents, BCHA is also looking to create inclusive housing that incorporates the needs of the Intellectual and Developmental Disability (IDD) community.



East Troublesome Burn Scar

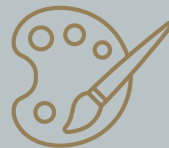
KEY TAKEAWAYS



Resilience starts with policy and engagement at the local level



Inclusive design benefits everyone
Ex: curb cuts help bikes, strollers, wheelchairs, etc.



Disaster memorial art should cater to a variety of trauma experiences



Resilience research is abundant, but education and policy are lacking

METHODS

1 Annotated Bibliography

A living document of 100+ resources, annotations, and recommendations to provide background academic research, government reports, and news stories.

2 Case Studies

Exploration into twelve US communities that have experienced a flood or fire in the US. Identification of best practices, key takeaways, and lessons learned at each location.

3 Professional Engagement

Engagement and input across a variety of professionals and residents through meetings, informal interviews, and group discussion.

DELIVERABLES

IDD Report



Best practices for designing spaces for the IDD Community & about site design and amenities

Site Analysis



Identification of potential sites for affordable housing in the Town of Superior; considers community connectivity, transit access, and amenities

ArcGIS StoryMap



Comprehensive deliverable creating a narrative of case studies, fire resilience techniques, and post-disaster engagement strategies

OUTCOMES

Boulder County Housing Authority now has an IDD design considerations plan to support future IDD housing development initiatives.

Our site analysis provides a study of existing amenities and connectivity at two key locations: the former Element Hotel site in downtown Superior, and the Autrey Drive site at the corner of Flatirons Crossing Mall.

The StoryMap tells a narrative of wildfire disaster, resilience, and recovery, and is a public resource to support any community looking to prepare for or recover from a wildfire disaster.

ACKNOWLEDGMENTS

Thanks to our MENV Advisor Gretel Follingstad and our partners at Boulder County Housing Authority, Lauren Cely & Christy Wiseman



Masters of the Environment
University of Colorado Boulder

