

CO-FARM: Community Food Assessment & Resiliency Model



Masters of the Environment



Laura Fishburn

Ezra Pira

Jodie Popma

Project Purpose:

To develop a research framework outlining the variables of a **self-sustaining, localized food system**, so future formalized plans can be created. The project designed framework for community resiliency that incorporates a locally-owned food system to ensure:

- food security
- nutrition for all
- sustainability
- economic stability

This project will be a dynamic blueprint/tool **Community Food Assessment and Resiliency Model (COFARM)**.

It will map the proposed features of a future tool that empowers communities to plan, construct, and control their food system from cultivation to consumer.

Objectives:

Develop a Comprehensive Research Framework for the foundation for CO-FARM.

- Define key research areas, methodologies, and stakeholders
- Assemble literature review that assesses what is happening locally and nationally to create a roadmap.
- Tool Outline: What will the tool do?
- Proposed features, functionality, and intended users.
- Future Recommendations: Propose next steps, a timeline, estimated costs and resources needed for development.

What are the Objectives of CO-FARM?



Create a **functional model of a resilient, local, and closed-loop food system** that's insulated against existential threats based on existing best practices already being implemented.



Support existing local farms by ensuring they are **paid fairly** for the food they produce.



Create local supply chains and processing sites that **reduce pollution** and allow small-scale processing.



Ensure community ownership of land and access to water to **protect farmlands** against future development and



Enable communities to produce and retain the value of their food locally so they can **invest these social enterprise profits**


**COLORADO BLUEPRINT
TO END HUNGER**

Background: The Colorado Blueprint to End Hunger is a collective impact organization backed by the Colorado Health Foundation focused on ending hunger in Colorado.

Blueprint's collective:

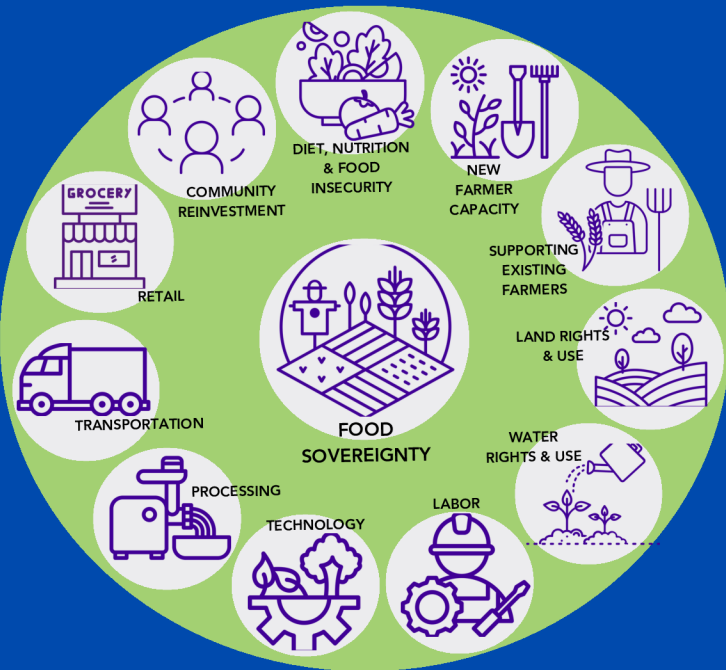
- local government agencies
- non-profits
- farmers
- anti-hunger advocates

The Blueprint collaborates to organize & align actions to champion systematic change to serve people at the community level.

1 in 10 Coloradans are food insecure

6 out of 10 people in Colorado are eligible for SNAP, but not enrolled

Research Categories



Methods

Research Framework:

- Literature Review
 - 120 sources
 - 12 categories
- Stakeholder outreach
 - 48 stakeholders contacted
 - 26 interviews total
- Thematic Analysis

Tool Analysis:

- Research existing tools
 - 16 tools researched
- Stakeholder outreach
 - 5 stakeholder interviews
- Features Analysis

Tool Recommendations Framework:

- Scale
 - Size & density of region
 - Amount of data, server size needed
 - Cost of development, testing & maintenance
- Governance
 - Collaboration with other tool owners
 - Data security
 - Inclusive representation and engagement
- Customization
 - Secure user accounts for traceability
 - Language options

Future Research Recommendations:*

- Community Integration
 - How do University Extensions programs support farmers?
 - Are there proven strategies for acceptance of migrant farm employees?
 - How accessible is fresh/healthy food throughout Colorado?
- Agricultural Access
 - Is the Universal Basic Food utility feasible?
 - Is possible to integrate a caloric density calculator?
 - Are new transportation methods available?
 - How can agrivoltaics be adopted on a wider scale?
- Resource Allocation
 - What are the reinvestment priorities for Colorado communities?
 - How can climate modeling data be used to predict crop yields?
 - How can distribution hubs be leveraged effectively?

Policy Recommendations:*

- Land Stewardship:
 - Stop giving away public lands for conversion
 - Uphold Native American treaty rights, retroactively restore those that were trespassed
- Equitable Market Access:
 - Eliminate grocery monopolies
 - Tax benefits for: energy-efficient processing, regenerative practices, landowners leasing to independent grocers
 - Federal commitment to ethical procurement
- Federal Investment:
 - H2A policy revision allowing for multiple employers, pathway to citizenship
 - Redirect investment in the Farm Bill
 - Enshrine rights to land, food, housing

*These lists of recommendations are not exhaustive. The full report includes 50+ policy and 40+ research recommendations.

Acknowledgements



Joël McClurg



Dr. Damien Thompson

We would like to thank the entire team at Blueprint to End Hunger, especially Joël, for support on this project. Additionally we thank our advisor, Dr. Thompson, and the full capstone team at MENV.



Sources:

Claeys, Priscilla et al. "Food sovereignty and convergence spaces." *Political Geography*. Vol 75. July 2019. <http://dx.doi.org/10.1016/j.polgeo.2019.102045>

Gilio-Whitaker, Dina. *As long as grass grows: the indigenous fight for environmental justice, from colonization to Standing Rock*. Beacon Press. 2019

Martin, Phillip et al. "Proposed changes to the H-2A program would affect labor costs in the United States and California." *California Agriculture*. Vol 75 Iss 3-4 (135-141). January 2022. <https://doi.org/10.3733/ca.2021a0020>

Mitchell, Stacy. "Walmart's Monopolization of Local Grocery Markets." *Institute for Local Self-Reliance*. Published June 2019. Accessed 9 August 2024. <https://ilsr.org/articles/walmarts-monopolization-of-local-grocery-markets/>