

DHARMA'S GARDEN CONSERVATION PROJECT PURPOSE:

The main purpose of our project was to navigate how to balance conservation, local food, and community engagement through the non-profit organization Dharma's Garden. Through our baseline report, we collected and analyzed the data needed to establish a conservation easement and ensure long term protection of the land.

DELIVERABLES:

BASILINE REPORT

The Baseline Report is a detailed assessment of the current natural and cultural resource conditions of the non-profit's 5-acre property, located in North Boulder. Data was collected through research, surveys, and conversations with local knowledge holders. Future land stewards will be able to use the Baseline Report to examine the current health conditions of the land compared to historic conditions. This Baseline Report will also inform the organization's application for a conservation easement. Dharma's Garden is currently working with the Mountain Area Land Trust (MALT) to apply for a conservation easement. After completion, the Baseline Report was used to craft a long term stewardship plan for the organization.

CAPSTONE TEAM

Tenley Bozzi
Sydney Dynek
Mary Grace Hutchinson

STEWARDSHIP PLAN

The Stewardship Plan is a living document that contains the organization's conservation and organizational objectives for the future stewardship of the land.

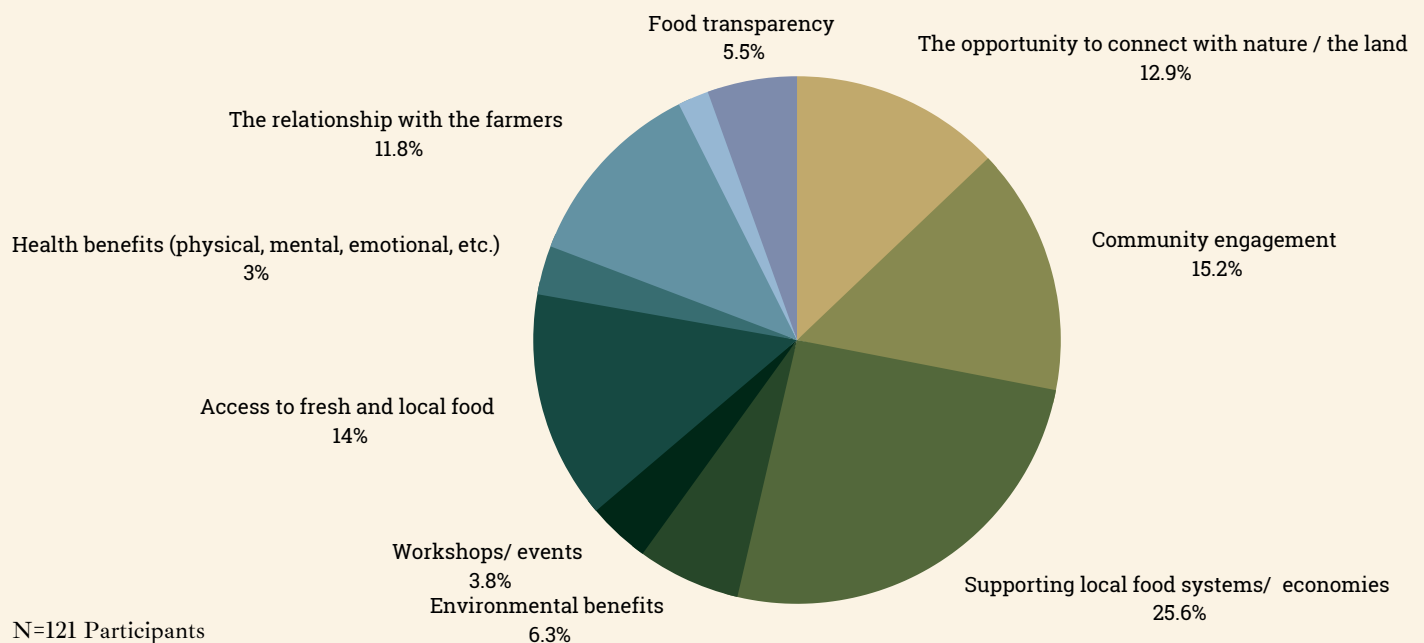


COMMUNITY PRESENTATION

Our team had the opportunity to share an overview of the deliverables we have been working on with Dharma's Garden's community members. The intention of the community presentation was to facilitate a space to inform and engage the community around our work with the organization. This was also an opportunity for the community to share future visions they have for the land and the organization.

KEY FINDINGS:

Dharma's Garden serves a crucial role in the connectivity of natural spaces in north Boulder, being within a half-mile of nearly a dozen city parks. In tandem with Wonderland Creek running through the land, Dharma's Garden serves as a critical wildlife habitat for species like the Preble's Meadow Jumping Mouse and is a safe haven for native plant species like Western Wheatgrass and Peachleaf Willow trees. Amidst climate change and substantial biodiversity loss this land supports plant and animal species endemic to the Front Range. This is in alignment with the conservation and food access goals outlined in the public health and environmental resources sections of the 2020 Boulder County Comprehensive Plan.



Our team launched a community survey to learn more about the community benefits, barriers, and overall engagement with the organization. The above graph illustrates the unique aspects of Dharma's Garden that appeal to the community members. The survey results portray the overwhelming support the community has for Dharma's Garden as a place and the people involved within the organization. The results of the survey also identified that over 70% of current community members will continue to be involved with the organization over the next few years.

ACKNOWLEDGEMENTS

Timothy Francis, Kerry Francis, Michael Figgs, Carl Vitale, Christine Strickland, Damien Thompson, Verna Kargnes, Valerie Matheson, Kathryn Grabenstein, Tracy Halward, Timothy Seastedt, Alan Carpenter, Taylor Mugila, Madeline Nall, Miriam Goldstein, James Snow, Dennis Duplessis, and Aaron Zauber