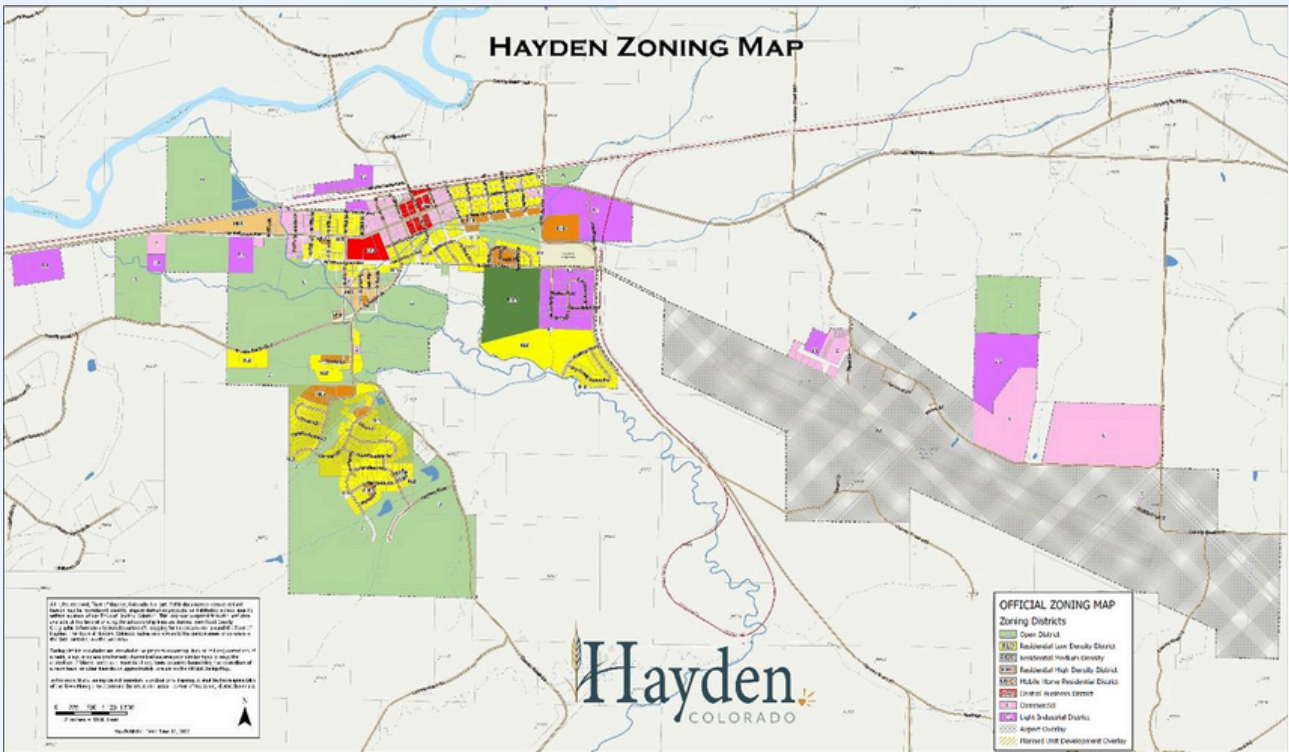


# Town of Hayden Resiliency Project



Prepared by: Brooke Miller, Sam Krause, and Yihui Zuo



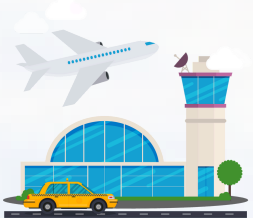
Hayden Zoning Map



Population of  
2,010



Shut down of  
coal plant in 2027



Development around  
the Yampa Valley  
Airport

## Resiliency

The ability for the Town to adapt and thrive in the face of change, challenges, and potential disruptions to physical, economic, social and environmental aspects of the Town.

### Background and Context



The Hayden Resiliency Project is an interlinked and interdisciplinary planning effort intended to weave resiliency principles into the Town’s overall approach to land development.

The Town is taking a holistic approach to understanding and managing the development factors within the Town’s control (regulations, infrastructure, and fees) in ways that can help guide the impacts of rapid growth on a small community, with a focus on environmental resilience, infrastructure development, community health, and financial stability. The following are the 5 components of the Project.



Community Health  
Assessment & Action Plan



Environmental  
Resiliency Review



Development  
Code Update



Public Works  
Studies



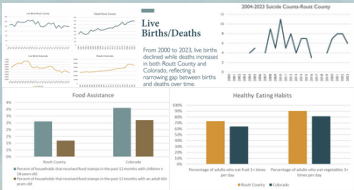
Financial Growth  
Impact Model

### Methodology



#### Literature Review

- Reviewed county and Town of Hayden documents, assessments, and the Master Plan



#### Data Collection

- Collected and organized qualitative and quantitative data to identify context and challenges



#### Surveys & Site Visits

- Gathered local input and observed conditions on the ground



#### Community Engagement

- Hosted event tabling to share information and hear from residents

### Key Resiliency Areas and Review

#### Development Code Update



Main goals: implement existing Town plans, incorporate community input, address other resiliency project pillars, and improve clarity and user-friendliness

Why

2021 Forward Master Plan and 2022 Housing Needs Assessment identified development needs

How

Development Code Assessment recommended key changes

Result

New Development Code will guide future projects

#### Community Health Assessment and Action Plan

The CHAAP outlines actionable strategies to help improve gaps in community health while also increasing resilience

Purpose

- Enhance Access to Healthcare Resources
- Decrease Food Insecurity
- Promote Healthy Living

Methods

- Data Collection
- Community Engagement
- Development of Final CHAAP



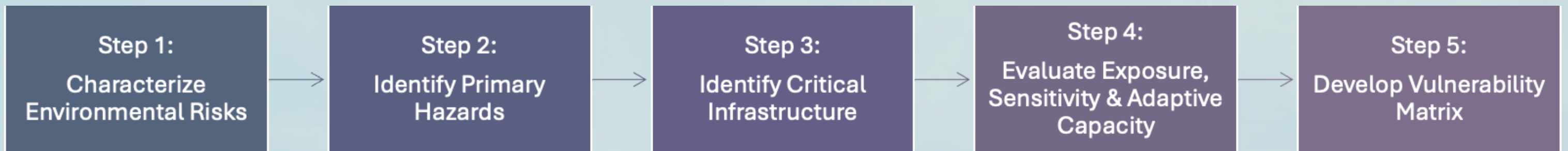
# Town of Hayden Resiliency Project

Prepared by: Brooke Miller, Sam Krause, Yihui Zuo

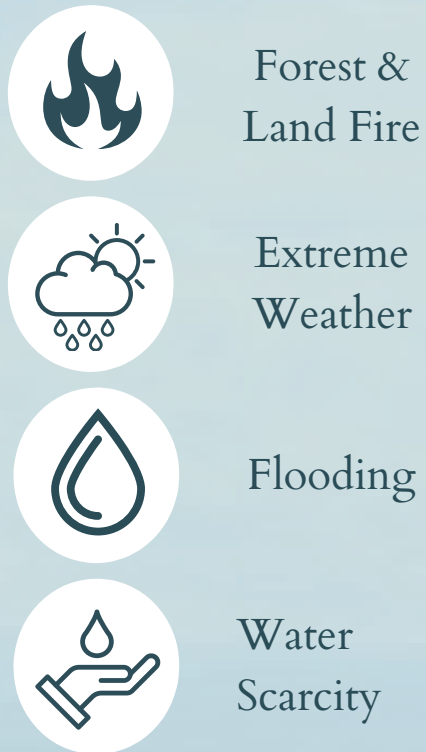


## Key Resiliency Area and Review

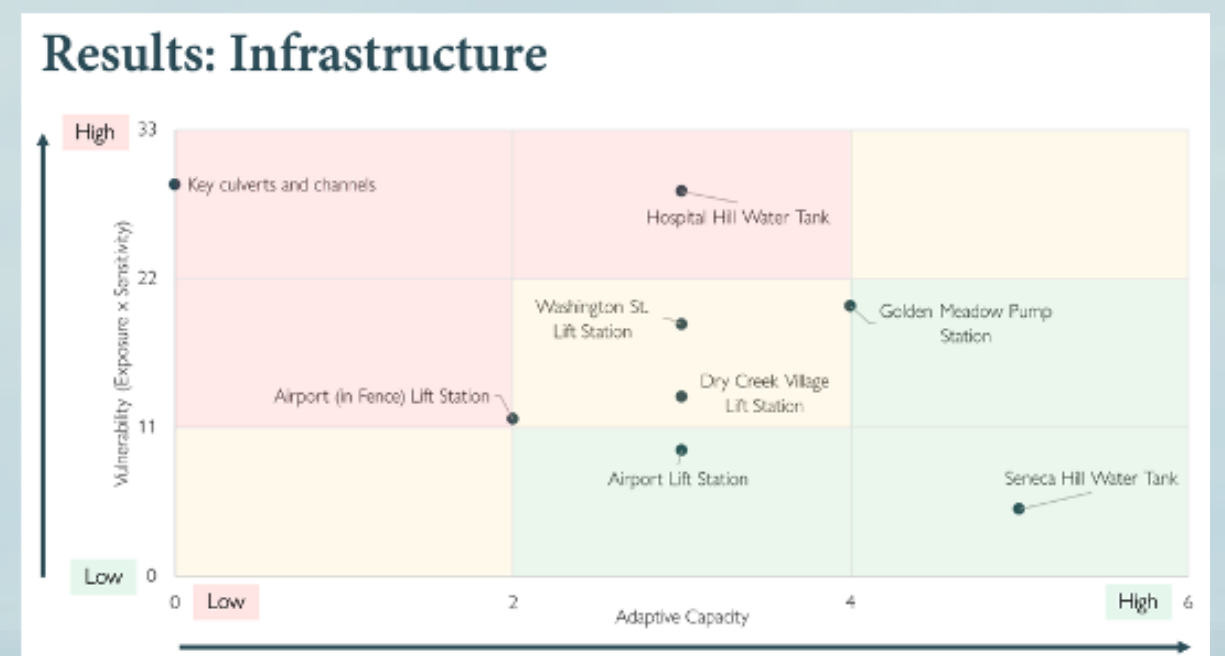
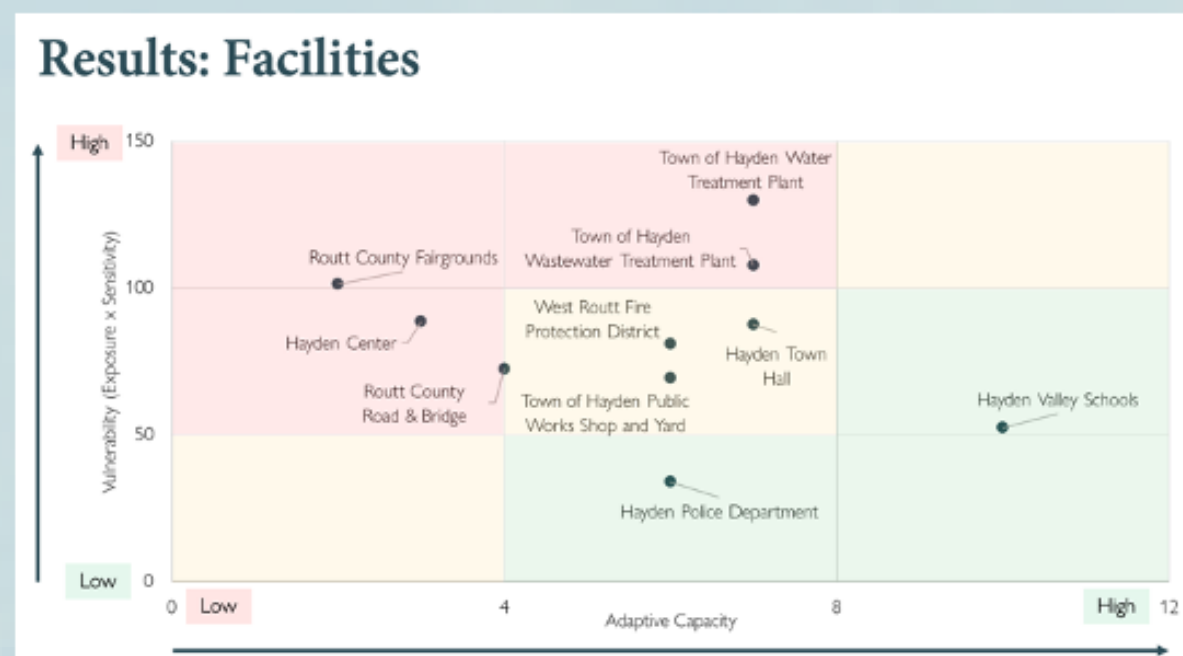
### Environmental Resiliency Review



#### Primary Environmental Risks



#### Vulnerability Matrix



The Brendle Group's Vulnerability Matrices

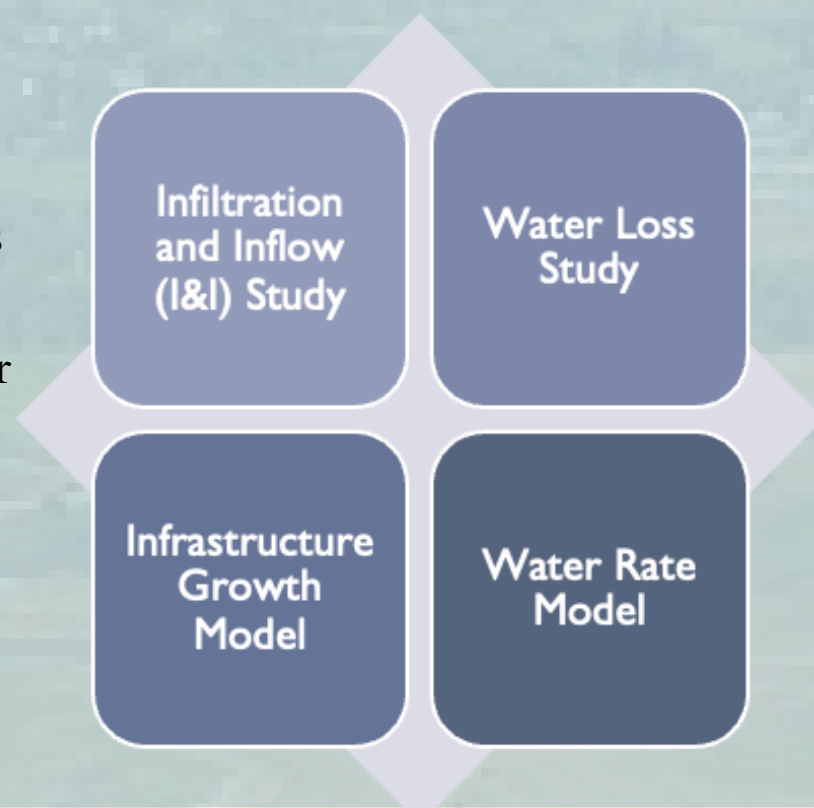
#### Strategies and Implementation



- Routt County Hazard Mitigation Plan
- Town of Hayden CIP
- Town of Hayden Code Updates

### Public Work Study

This project includes an EPA-aligned I&I Study, a Water Loss Audit, infrastructure growth modeling, and an updated water rate model to help Hayden reduce system losses, plan cost-effective expansion, and ensure long-term utility sustainability.



### Financial Growth Impact Model

This pillar will build a tool to help Hayden understand the fiscal impacts of current and future development by collecting and organizing key datasets. A mapped ROI model will be built for each parcel and an Excel-based financial impact calculator, delivered alongside all data, maps, infographics, and guidance for future updates.

Data Acquisition and Clean

Organizing Key Datasets

Building a model and Excel-based calculator

## Public Engagement

### In-person Engagement



### Virtual Engagement



### Town Council Report

From May to December, the team provided scheduled updates on community engagement, project progress, and the development of final deliverables. This timeline ensures steady communication and transparency while guiding the project toward a comprehensive final presentation.

## Acknowledgements

We would like to thank the Town of Hayden, especially Partner Lead Tegan Ebbert and the dedicated Town staff, for their guidance and collaboration. Special thanks to MENV Project Advisor, Gregor MacGregor, and our Capstone Instructors, Alice Reznickova and Meghan McCarroll, for their continuous support and mentorship. We also sincerely appreciate all of our consultant partners, who shared their expertise and insights with us throughout the project.