



smartLav™

quickstart guide

RØDE SOUNDBOOTH

now for Broadcast mics

Hear and compare RØDE microphones
at www.rodemic.com/soundbooth or on your iPad®



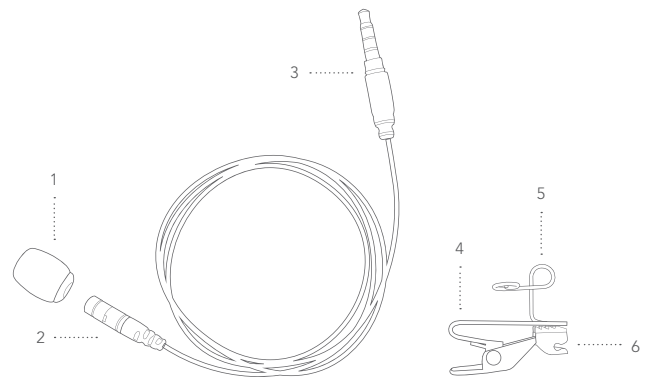
RØDE®

MICROPHONES



www.rodemic.com

smartLav™ Parts Guide



Microphone and cord

1. Removable Pop shield
2. Microphone capsule
3. TRRS connector

Clothing clip mount

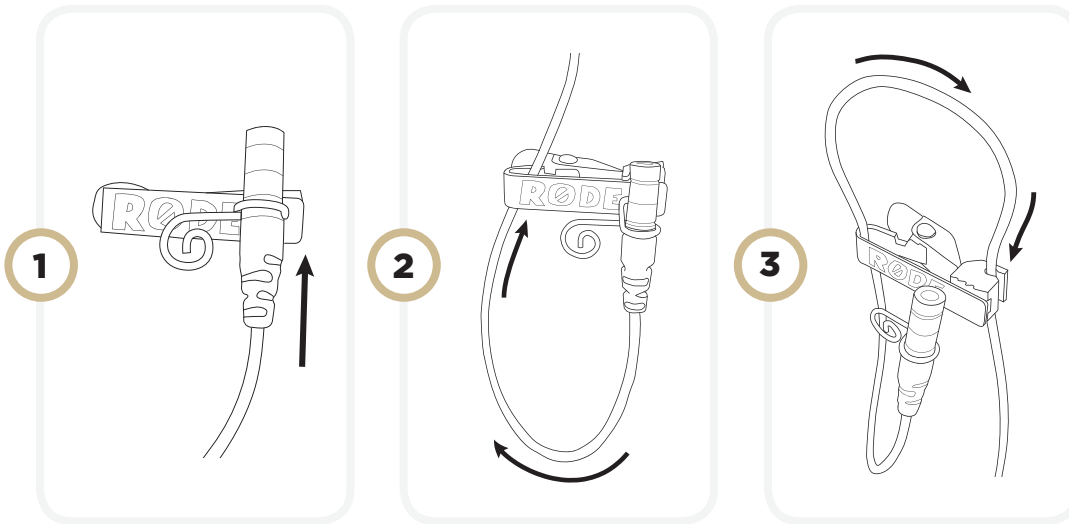
4. Lapel clip
5. Microphone mounting clip
6. Cable management clip

REMEMBER
to register for your
twelve month warranty!

Scan the QR code to
register now, or visit
warranty.rodemic.com/smartlav



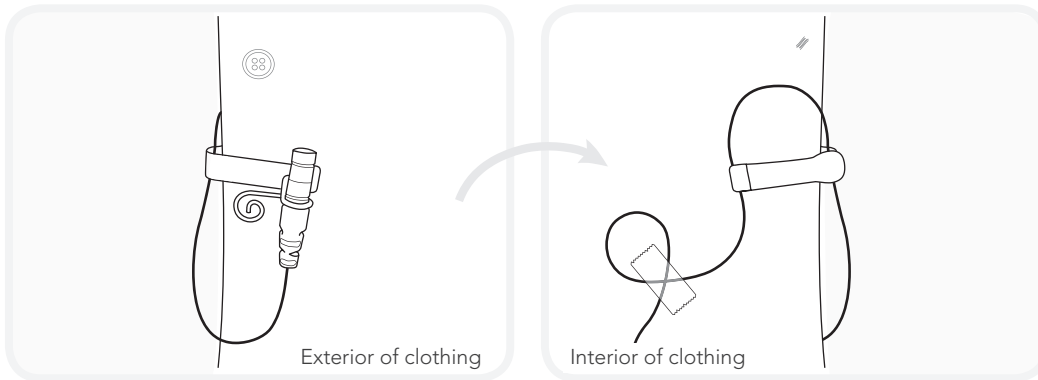
how to use the mount



1. Insert the mic capsule into the wire loop.
2. Loosely loop the cord back up and through the inside of the clip.
3. Loop the cord back down and secure it in the cable management clip.

This arrangement helps to minimise handling and mechanical noise and also minimises cable strain.

mounting mic on clothing



Attach the mic to lapel or clothing, about 15-20cm / 6 inches from face.

Pro tip: Tape a loose loop in the mic cord on the inside of clothing. This gives you added strain relief and isolation from unwanted noise.

mic tips

Attach the smartLav™ **upside down** to reduce excessive breath noises and tonal inconsistencies due to head movements.

It is safest to use the **windshield** at all times to avoid plosives and wind noise, even when recording inside.

smartLav™ is compatible with a range of phones, laptop computers and other audio devices.

RØDE Rec
for iPhone & iPad

Available on the
App Store

