

## Mounting Cookies

### Materials:

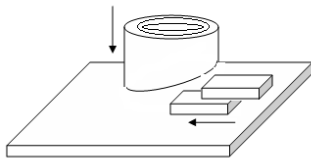
Plywood ¼''  
Hand-held jigsaw  
Blades  
Wood glue (Premium is best)  
Pencils  
Sharpies  
Large clamps  
Shop vac

### Mounting the cross-section:

1. Determine an up-side and a down-side of the cross-section. Pick down-side based on which side is more easily mounted (i.e. is flatter and does not tip as easily or needs less extra propping).
2. Trace cross section. Using a pencil, trace around the cookie. The line does not have to be exact but make sure it indicates the general shape and parts that jut out (i.e. branches, etc).
3. Copy the sample label or identification onto the plywood with a permanent marker.
4. With the jigsaw, cut plywood shapes out. Follow the traced line leaving about a ¼'' of space between the line and the cut.

**\*\*Make sure to hold down the plywood firmly with one hand and cut firmly with the other, otherwise the plywood has a tendency to bounce and the cut is not quite as clean.\*\***

5. Put wood glue on both the plywood and down-side of cookie. If the section is stable on its own, glue it down and weight it (old catalogs work well). If the section is not stable place scrap wood under the cross section to stabilize it. Glue scraps to plywood base first before attaching cookie.



Use scraps to prop cookie perpendicular to plywood mount. If top surface of cross section is slanted, aim to make vertical sides of tree perpendicular.

6. Fill any cracks in cross sections with glue. Even minor cracks should be filled, as you will need the stability while sanding.
7. Glue broken pieces of cookies together as well, weighting not only the top by sides while glue is drying.

**\*\*Make certain that the label or identification is written in sharpie on the back of the plywood\*\***

8. Let dry overnight

## Mounting Cores

### Materials:

Core Mount  
Small hand-held jewelry type saw  
Blades  
Wood glue (Premium is best)  
Pencils  
Sharpies  
Lab tape

### Mounting the cross-section:

1. Gently remove core from paper straw. Align the core on the core mount such that the core is oriented the same way that it was removed from the tree. Typically there is a rough mark that runs along both sides of the core. In addition you can look at the pith end of the core. The wood grains should run vertically or perpendicularly to the core mount. It is common to have to gently break the core and realign it, as it is common for the core to twist as it is removed from the tree
2. After aligning the core, gently squeeze a ribbon of wood glue down the trough of the core mount. Firmly press the core into the glue.
3. Copy the sample label or identification onto the mount with a permanent marker. Note the direction of the bark with an arrow.
4. Fill any cracks or breaks in cores with glue. Even minor cracks should be filled, as you will need the stability while sanding.
5. With lab tape, secure the core to the mount while it is drying and let dry overnight.
6. Multiple cores can be glued onto the mount prior to cutting the mount into sections.
7. After cores are fully dry, cut core mount into sections with the hand saw, one for each core.