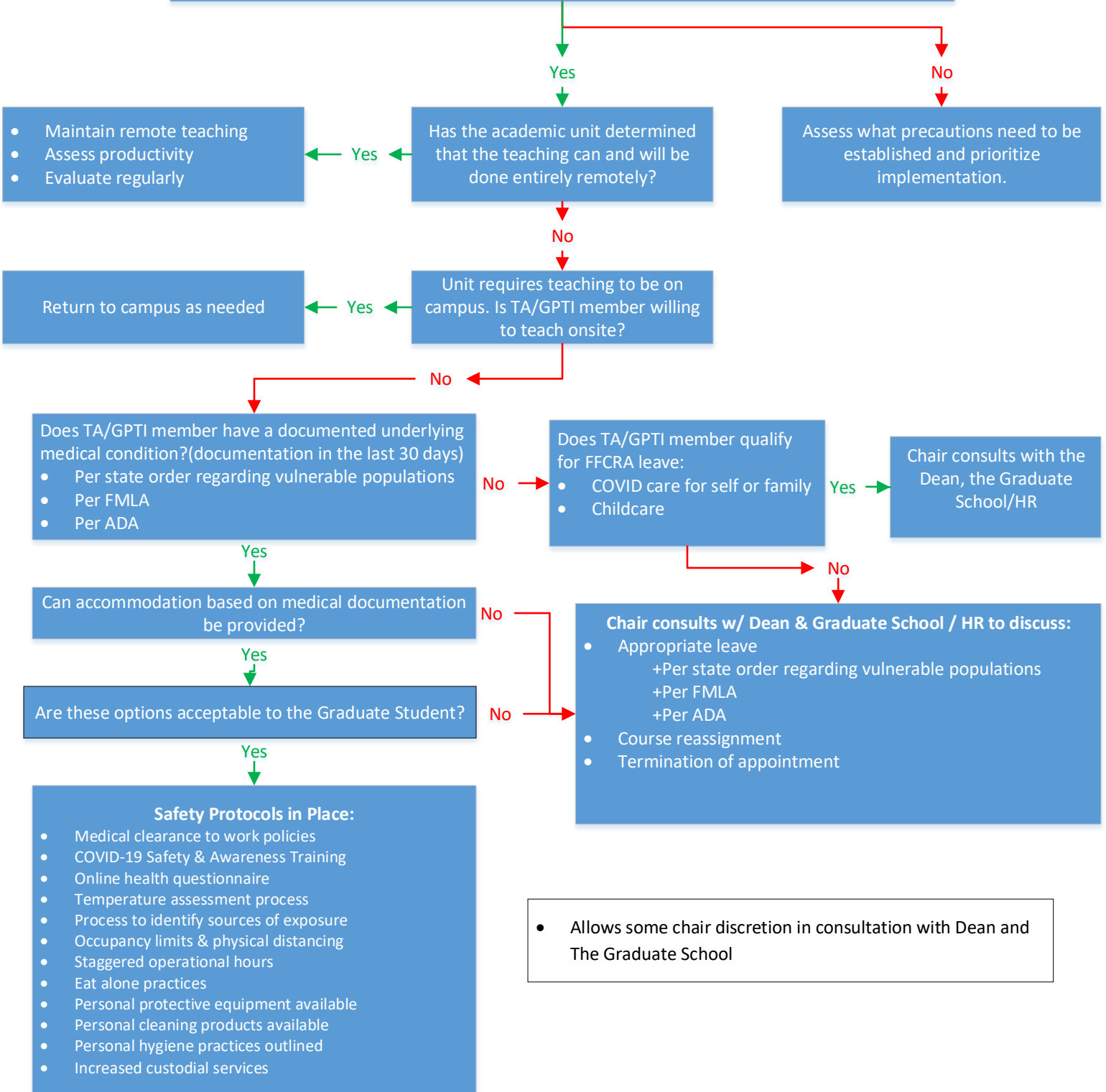


TA & GPTI Re-entry & Working Safely During COVID-19

- Has the campus made a decision to begin onsite teaching and learning?
- Do government orders allow onsite teaching and learning?
- Have appropriate PPE been put in place?
- Has consideration been given to staggering who is onsite and when?
- Do we have the will, processes & capacity to enforce compliance with new teaching and learning rules?
- Have steps been taken to prepare leaders to engage with others on returning to work?
- Do we have a plan in place should we need to return to remote teaching and learning?



- Maintain remote teaching
- Assess productivity
- Evaluate regularly

Has the academic unit determined that the teaching can and will be done entirely remotely?

Assess what precautions need to be established and prioritize implementation.

Return to campus as needed

Unit requires teaching to be on campus. Is TA/GPTI member willing to teach onsite?

- Does TA/GPTI member have a documented underlying medical condition?(documentation in the last 30 days)
- Per state order regarding vulnerable populations
 - Per FMLA
 - Per ADA

Can accommodation based on medical documentation be provided?

Are these options acceptable to the Graduate Student?

- Safety Protocols in Place:**
- Medical clearance to work policies
 - COVID-19 Safety & Awareness Training
 - Online health questionnaire
 - Temperature assessment process
 - Process to identify sources of exposure
 - Occupancy limits & physical distancing
 - Staggered operational hours
 - Eat alone practices
 - Personal protective equipment available
 - Personal cleaning products available
 - Personal hygiene practices outlined
 - Increased custodial services

- Does TA/GPTI member qualify for FFCRA leave:
- COVID care for self or family
 - Childcare

Chair consults with the Dean, the Graduate School/HR

- Chair consults w/ Dean & Graduate School / HR to discuss:**
- Appropriate leave
+Per state order regarding vulnerable populations
+Per FMLA
+Per ADA
 - Course reassignment
 - Termination of appointment

• Allows some chair discretion in consultation with Dean and The Graduate School