



Department of Geological Sciences
UNIVERSITY OF COLORADO **BOULDER**



Kevin Mahan

As Associate Chair, I oversee the Geological Sciences graduate education program and chair the department's Graduate Curriculum Committee. I work closely with the department's Graduate Program Administrator (Kara), and along with the rest of the GEOL faculty and staff, we are striving to make the process of getting your degree as smooth and transparent as possible while maintaining the high standards of a CU Boulder advanced degree. I support you and I want you to enjoy being here as much I have since I first came to CU in 2007. So, keep working hard! You can find me most days in the Benson building, or you can send an email to arrange a meeting. Feel free to drop me a line or pass on thoughts for how to improve our graduate program to your graduate reps on our departmental committees and our faculty meetings.

Meet with Kevin!

Important Upcoming Deadlines

Grad School Dissertation Fellowship Completion due Nov. 8th

This fellowship is intended to provide outstanding PhD candidates with financial support to assist in the process of completing their doctoral dissertations. The fellowship consists of full support for one academic semester (either Fall 2025 or Spring 2026) and includes a monthly stipend equal to that of the current 50% GPTI salary, tuition coverage of up to five dissertation hours, mandatory fees, and coverage under the student gold health insurance plan.



Apply Here



GEOL Proto & Advisory Committee Meetings

Recommended to be completed in Fall semester, by November 22nd if possible. Refer below to committee guidelines on the Grad Program Intranet via SharePoint if needed!

[Committee Guidelines](#)

Department Social Events

New Frontiers Conference!

New Frontiers in Translational Geoscience is a research conference hosted by the Department of Geological Sciences at CU Boulder. The conference will showcase posters on geoscience research conducted by mainly graduate students at CU Boulder, followed by an optional networking social hour with representatives from geoscience-related agencies, businesses, non-profits, and organizations. Refer to website below for more info!

Date & Time: Nov. 9th 9:45 - 1:25 pm



[Learn More Here](#)



BAJEDI Night At the Museum

BAJEDI is hosting a Night at the Museum on **November 13th** from 5-7 pm! Bring friends and family to CU's Natural History Museum for a night of discovery! Food and drink will be provided! View the flyer and **RSVP** below!

[RSVP Here](#)

Colloquium and Happenings

Geological Sciences Colloquium: Dr. Emily Cooperdock

Topic: Does Mantle Weathering Help Maintain a Habitable Planet? Come to Benson 380 on



November 6th at 12:30 to hear Dr. Cooperdock speak. Snacks and refreshments will be provided starting at 12 pm.

**View Colloquium
Schedule**

Abby Eckland - PhD Dissertation Defense

View the flyer for Abby Eckland's Dissertation Defense. As announced, it will take place this **Friday at 1:30 pm**. A zoom link for this event can be accessed through the flyer below.

Topic: "Reservoir Sedimentation and Delta Dynamics Across Scales"

**Abby Eckland
Flyer**

Naomi Ochwat - PhD Dissertation Defense

View the flyer for Naomi Ochwat's Dissertation Defense. As announced, it will take place **Monday, November 4th, at 10:30 am**. A zoom link for this event can be accessed through the flyer below.

Topic: "From Antarctic Sea ice unleashing glaciers to Alaskan icefalls releasing ogives: Investigations of glacier processes using remote sensing, field data, and numerical modeling"

Topic: "From Antarctic Sea ice unleashing glaciers to Alaskan icefalls releasing ogives: Investigations of glacier processes using remote sensing, field data, and numerical modeling"

**Naomi Ochwat
Flyer**

Ethan Pierce - PhD Dissertation Defense

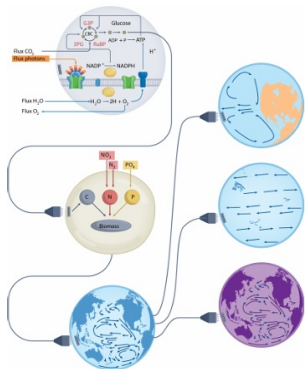
View the flyer for Ethan Pierce's Dissertation Defense. As announced, it will take place **Monday, November 4th, at 1:30 pm**. A zoom link for this event can be accessed through the flyer below.

Topic: "From bedrock to bergs: sediment entrainment beneath glaciers and ice sheets"

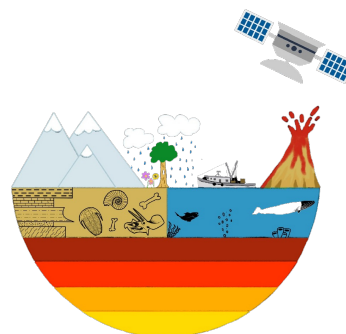
Topic: "From bedrock to bergs: sediment entrainment beneath glaciers and ice sheets"

**Ethan Pierce
Flyer**

GEOL Electives and Field Classes



**GEOL 5700-837: Geobiology by the
Numbers**



ATOC 6800-801 Scientific Writing

Successful science writing tells a story and makes it easy on the reader to understand

In this course, we will explore the metabolic principles that exhibit commonalities across scales of space and time. Mass, electron and energy balance provide quantitative constraints on their flow within metabolic networks, organisms and ecosystems, shaping how each respond to environmental change.

Mondays 2-4 in BESC340E (2 credits)
(boswell.wing@colorado.edu)

our results. In this project-oriented class, we will work on developing good writing skills that will increase the scientific impact of your papers and make writing more enjoyable by learning how to approach the writing and editing process.

Tuesdays 8:45am-11:15 am SEEC S126
Dr. Alex Jahn
(alexandra.jahn@colorado.edu)

**View Class
Flyer**

**View Class
Flyer**

**Register for Classes on your Buff
Portal**

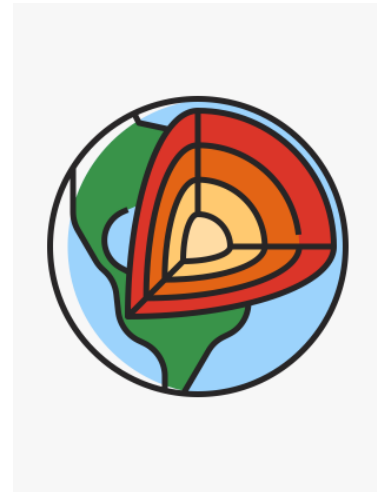
Funding Opportunities

Scholarships and Stipends

Figueroa Family Fellowship

This \$1,500 scholarship is available to a student working in the sciences or engineering. The applicant should demonstrate a commitment to the achievement of a diverse student body. More information and **how to apply** can be found below! Deadline to apply: **December 9, 2024**

[More Information Here](#)
[Apply Here](#)



2025-26 Scholarships Applications Open Tomorrow

Scholarship applications for the 2025-26 Academic Year open tomorrow, 11/1 in your Buff Portal. Completing the general application will apply you to almost all scholarships in Geological Sciences as well as hundreds of other scholarships in A&S and across campus. Don't sleep on other opportunities! There may be additional scholarships you are eligible for but require that you answer a couple additional questions.

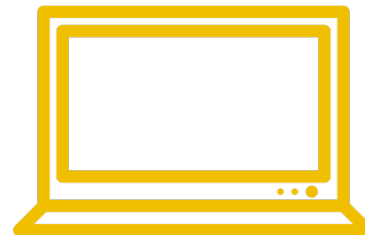
[Learn More and Apply](#)

Jobs and Internships

Final October Repository

Below is the **final edition** of the October Job Repository! Starting next week we will begin adding new opportunities to the **November file**. We will still link the October folder in the following editions. Some new opportunities this week include:

- Postdoc position in Experimental Geochemistry at UNC Charlotte
- STEMSEAS opportunity for students interested in the marine technology field
- Assistant or Associate Professor at Simon Fraser University



October Repository

Graduate Research Funding

CU Boulder Graduate School Research Grants - due Nov. 8th

The Graduate School administers two grant funds that support the research, scholarship, and creative work of graduate students from all departments. Made possible by the generosity of our donors, student may apply for funding up to \$1200. Deadline to apply: **November 8, 2024**



[Apply Here](#)

Department News and Features



Changes in your Spring 2025 Funding plan?

Submit a projected funding form by Nov 8 to the below Google e-inbox with any funding updates or changes. Need a projected funding form? Email GeoGPA@colorado.edu by Nov 7th. Submit below!



Geology Advisory Board Meeting - GAB + Grad Students

Come [meet the board](#) and network with geology professionals who are employed in a variety of industries. Lunch will be provided and stick around for a conversation with the board about your experiences in the graduate

Funding Form

program. Friday November 8th from 12 to 2:30 pm.

RSVP Here

Miss a Newsletter?

Check out past newsletters at [this link!](#)

Just So You Know...

The grad newsletter will be sent out each Thursday at 4 pm, so check back weekly for news, job and funding opportunities, and messages from your faculty. If you have something you would like to share in a future edition of the newsletter, please email geoloffice@colorado.edu.



[Our Company](#) | [Contact Us](#) | [FAQs](#) | [Privacy Policy](#)

Benson Earth Sciences | 2200 Colorado Ave | Boulder, CO 80309 US

[Unsubscribe](#) | [Update Profile](#) | [Constant Contact Data Notice](#)



Try email marketing for free today!