



Meet Cole Gladhart, an Undergraduate Advisor

Cole is here to help you construct your future! Cole, with his extensive experience as the advisor for Math, Statistics, and Data Science, as well as Geology, is a trusted figure. His strong background and overseas work experience make him an invaluable resource to guide you on how to incorporate study abroad or international experience into your college journey.

Pro tip – academic advisors tend to have more availability now through mid-October, about Oct 14th, so don't delay a meeting if there is something you want or need to discuss with an academic advisor or Geology Undergraduate Faculty Mentor.

General Advising Open hours

Mondays 1:00 – 3:00 PM for Cole and Jordyn (See Buff portal for video contact info)

Geology Undergraduate Faculty Mentor (Walk-in)

Lon Abbott: Wednesdays 9:00 – 10:00 AM and 11:00 – 12:00 PM. (Benson 222A)

Jennifer Stempien Monday 3:30 – 4:30 PM (in person, no reservation necessary, Benson 222B)

[View Cole Gladhart's Page](#)

[Schedule Through Buff Portal](#)

Important Upcoming Deadlines

Honors Thesis

The deadline to register for a Spring 2025 thesis defense is **October 1st**. Registering requires a prospectus, timeline, bibliography, an in-person meeting, and approval by the Honors representative.

[Learn
More](#)



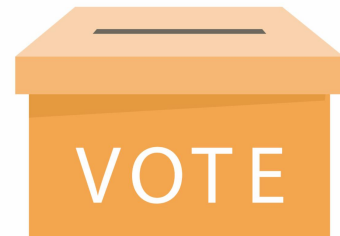
Study Abroad

The deadline to register for most Spring 2025 study abroad programs is coming up on **October 1st**.

[Learn More and
Register](#)

Voter Registration

Voting is easy, but it takes a little prep. Let's get started! Election day is Tuesday, **Nov. 5**. Register now, plan to research your ballot and then vote by 7 p.m. MST. If you are registered to vote in Colorado, you will receive a ballot in the mail. Drop your ballot off before the deadline at CU Boulder's 24-hour ballot drop boxes at the University Memorial Center or Williams Village. You may also vote in person starting Oct. 21 at the UMC or Williams Village (Nov. 4-5 only).



[Learn How to
Vote](#)

Reminders



Tutor Room New Hours

Recently, the Geology Tutor Room in BESC 1B84 has changed their Tuesday and Thursday hours. Stop in for some help with lower division courses!

[View New
Hours](#)

Department Social Events

Astrotopophilia

Join the department at Fiske Planetarium at 7:00 pm on October 10th for a special Science Under the Dome talk! Listen to Sam Cartwright trace the history of planetary cartography from the earliest telescope sketches to today's high-resolution imagery and explore the indelible link between maps and humanity's fascination with space. The event is free for students with a valid Buff One card. Dessert reception to follow at the Map Library from 7:45 to 8:45pm.



**Learn
More**



Topophilia Ongoing Exhibit

Topophilia, which means “love of place”, is a term that explores the bond between people and place. It's also the topic and title of a new exhibition at the Earth Sciences & Map Library, Topophilia, which is open now until August 2025. The exhibition invites viewers to consider their own relationships to place through the prints of Johanna Mueller, ceramic installations by Rita Vali, and a collection of gorgeous maps from the University Libraries co-curated by Geological Sciences/Laboratory for Atmospheric and Space Physics PhD candidate Sam Cartwright and Map Curator Naomi Heiser.

**Learn
More**

Talks and Colloquium

Geological Sciences Colloquium Speaker

On October 2nd, stop by Benson 380 for a colloquium given by Dr. Carl Simpson! This week's topic is Animal Macroevolution: Bodies, Bones, and Blood. The talk will begin at 12:30, with snacks and drinks provided starting at 12:00.

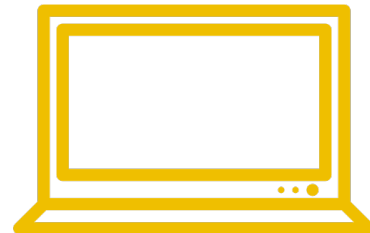


[View Colloquium
Schedule](#)

University Events

Career Services Virtual Career and Internship Fair

This virtual fair will be held on October 1st from 10:00 am to 3:00 pm. It is open to all industries and all majors including science, technology, engineering, math, art, design, humanities, and more. Check out the link below to register and view more fairs and events.



[Learn More and
Register](#)

Tues., Oct. 1 | 5:00–8:30 p.m.
University Memorial Center, Room 235



Voter Engagement Fair

On October 1st at 5:00pm, stop by the UMC room 235 for the Voter Engagement Fair! Students are invited to explore the roles of social media, political ideology, and the role they play in the upcoming election. Attendees can also register to vote, learn about voting rights, and speak with election experts. The event will be followed immediately by a VP debate watch party.

[Learn
More](#)

Student Jobs and Internships

Great Basin Institute

The National Parks Service is looking for two Geologic & GIS Technician interns to assist with creating a high-resolution geologic map of John Day Fossil Beds National Monument in eastern and central Oregon! The selected candidates will produce an updated, high-resolution geologic map of all three units of JODA in ArcGIS Pro, produce cross-sections with orientation data, create accessible versions of the maps for multiple audiences (print, web, etc.), conduct fieldwork, update related workflows, updated geologic descriptions for each unit in JODA, present at a professional conference and to JODA visitors, and publish the map in a peer-reviewed journal. The position is through partners at The Great Basin Institute which offers benefits including overtime, paid leave, and health insurance. It will be a nine-month, full time internship.



[Apply Here](#)

Miss a Newsletter?

Check out past newsletters at [this link](#)!

Just So You Know...

The undergrad newsletter will be sent out each Thursday at noon, so check back weekly for news, job and funding opportunities, and messages from your faculty. If you have something you would like to share in a future edition of the newsletter, please email geoloffice@colorado.edu.



[Our Company](#) | [Contact Us](#) | [FAQs](#) | [Privacy Policy](#)

Benson Earth Sciences | 2200 Colorado Ave | Boulder, CO 80309 US

[Unsubscribe](#) | [Update Profile](#) | [Constant Contact Data Notice](#)



Try email marketing for free today!