

Important Upcoming Deadlines



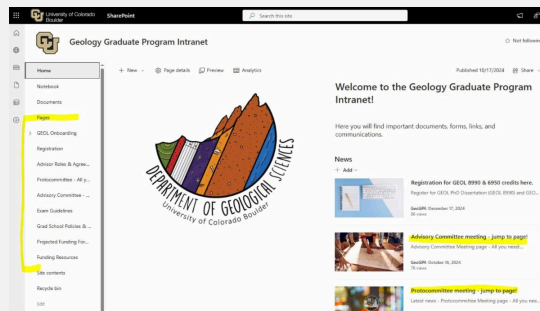
Your Vision for New Benson Earth Sciences Library

We're re-visioning the Earth Sciences & Map Library and want your ideas. This short survey asks what you want to see in the future, as well as what's important for us to preserve. **Your feedback will help inform what comes next!**

[Form Here](#)

Geology Graduate Program Intranet on SharePoint!

Sign in below with your identikey to access Graduate Program Guidelines documents & Department forms for Committee Meetings. Everything you need in a one-stop-shop.



[SharePoint Website](#)



Upload Completed Committee Docs

Use [this link](#) to submit proof of Committee Form completion.

Colloquium & Happenings

Looking for Grad Students for Colloquium Committee!

The Colloquium Committee is a faculty-led committee that organizes the GEOL colloquium program, including **inviting and scheduling speakers** and managing their **campus logistics**, and providing a **post-colloquium social hour**. GSGA sends two student delegates to represent the graduate students on the Colloquium Committee. The student representatives solicit feedback from the graduate students on topics and speakers to invite for the weekly Colloquium talk, attend Colloquium Committee meetings, help send out relevant weekly information about Colloquiums.



If you are interested, please contact geocolloquium@colorado.edu



Colloquium Next Week

Join us next week for colloquium in Benson Earth 380 on **4/22, 12:20-1:20 PM** with Dr. Anat Shahar

Coffee Social & Data Visualization Poster Session

Come join us this **Monday, April 20th**, and every Monday from **10:30–11:30 AM** in Benson Earth 380 for some delicious coffee, tea, and treats! All students and faculty are welcome!



Data Visualization Class Poster Session

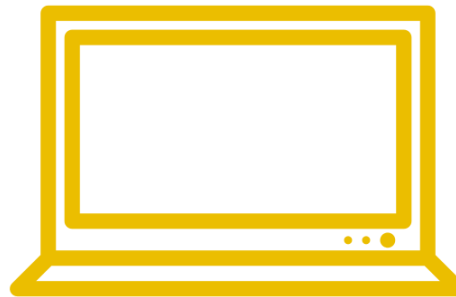
Starting at 11 in Benson Earth Sciences 380 will be the **Data Visualization poster session** from **11-12:15 PM**

Scholarships and Stipends

March Funding Repository

Click the link below for current Funding and Scholarship Opportunities! This folder is **updated continuously**. Check back soon as opportunities come in!

- ARCS Scholarships - **Deadline: April 24**
- GPSG Summer Travel Grant
- Core Facility Shared Instrumentation Voucher



View **April** repository with [this link!](#)

View **March** repository with [this link!](#)

Jobs and Internships



March Job Repository

Click the link below for all Job and Internship Opportunities! This folder is **updated continuously with new positions**. Check back soon as opportunities come in!

- Big Rock Exploration Hiring
- Assistant Professor: Critical Mineral Resources
- Golden/Albuquerque Seasonal Field Assistant

View **April** repository with [this link](#)

View **March** repository with [this link](#).

CU Events



Human and More-than-Human Relationships Exhibition

Celebrate CU Boulder's 150th anniversary with the Campus Life: 150 Years of Human and More-than-Human Relationships exhibition, opening **April 22** from **3:30 to 4:30 p.m.** at the Earth Sciences & Map Library. This unique exhibit showcases the evolving connections between people, plants, and wildlife on campus through historical maps, art, and specimens. Following the reception, join a tree walk led by Lead Arborist Vince Aquino, featuring the gifting

of a new ginkgo tree to the Earth Science Department. This event is a collaboration between NEST Studio, the Museum of Natural History, and Facilities Management.

External Opportunities Outside CU

Author Talk: Climate Wayfinding with Katharine K. Wilkinson

Join Katharine K. Wilkinson for a discussion and book signing of *Climate Wayfinding*, in conversation with Megha Sood, on **May 14 at 6:30 PM** at **Boulder Bookstore**. This special event will explore pathways toward climate action and personal resilience in an engaging community setting. Register below.

[Register Here](#)



Wrangell Mountains Field Studies 2026

Earn six semester credits in Earth and Climate Sciences through the University of Maine by joining this field research program in the heart of Alaska's Wrangell-St. Elias National Park. From **June 22 to August 10**, students gain hands-on experience in glacier dynamics and ecology. Applications are reviewed on a rolling basis.

[Apply Here](#)

Miss a Newsletter?

Check out past newsletters at [this link!](#)

Just So You Know...

The graduate newsletter will be sent out each Thursday, so check back weekly for news, job and funding opportunities, and messages from your faculty. If you have

something you would like to share in a future edition of the newsletter, please email geoloffice@colorado.edu.



[Our Company](#) | [Contact Us](#) | [FAQs](#) | [Privacy Policy](#)

[Benson Earth Sciences](#) | [2200 Colorado Ave](#) | [Boulder, CO 80309 US](#)

[Unsubscribe](#) | [Update Profile](#) | [Constant Contact Data Notice](#)



Try email marketing for free today!