

## Important Upcoming Deadlines

### Special Grad Student Coffee Social!

Graduate Student Appreciation Week will start on **April 6** from **10:30–11:30 AM** in Benson Earth 380. Join us for coffee, food, and to receive exclusive swag.

[Learn More Here](#)



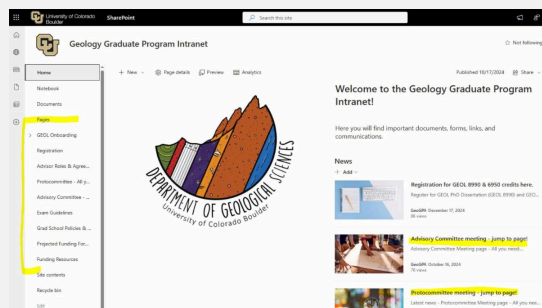
### Graduate Student Appreciation Week

CU Boulder will celebrate Graduate Student Appreciation Week **next week** from **April 6-10** to recognize the vital contributions of our graduate community. The week features a diverse lineup of activities, including wellness sessions, career workshops, bowling, and a special graduate student breakfast on April 7. See all events below!

[Events](#)

### Geology Graduate Program Intranet on SharePoint!

Sign in below with your identikey to access Graduate Program Guidelines documents & Department forms for Committee Meetings. Everything you need in a one-stop-shop.





## Upload Completed Committee Docs

Use [this link](#) to submit proof of Committee Form completion.

## Colloquium & Happenings

### Looking for Grad Students for Colloquium Committee!

The Colloquium Committee is a faculty-led committee that organizes the GEOL colloquium program, including **inviting and scheduling speakers** and managing their **campus logistics**, and providing a **post-colloquium social hour**. GSGA sends two student delegates to represent the graduate students on the Colloquium Committee. The student representatives solicit feedback from the graduate students on topics and speakers to invite for the weekly Colloquium talk, attend Colloquium Committee meetings, help send out relevant weekly information about Colloquiums.

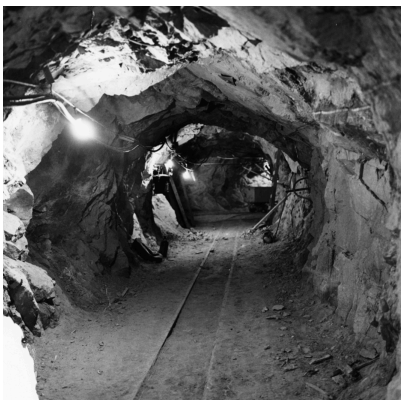
If you are interested, please contact [geocolloquium@colorado.edu](mailto:geocolloquium@colorado.edu)



### Colloquium: Fossil Plants for Testing Deep Time Climate Models

Join us this week for an exciting colloquium presentation by **Dr. Scott Wing** in Benson Earth 380 on 4/08, 12:20-1:20 PM

## GEOL Electives & Field Classes



## Explore the Historic Edgar Experimental Mine

Department alumnus Sean Sundermann is offering a unique opportunity for students to join a mine tour on **Monday, April 6**. The trip departs from CU at 8 am and returns by noon. interested students can contact Sean [here](#) to reserve one of the few extra seats.

## Scholarships and Stipends



### GPSG Summer Travel Grant - Due April 6

GPSG awards funding to individual graduate and professional students to support travel to academic conferences, meetings, or other events related to a student's studies. Application link is below.

[Apply Here](#)

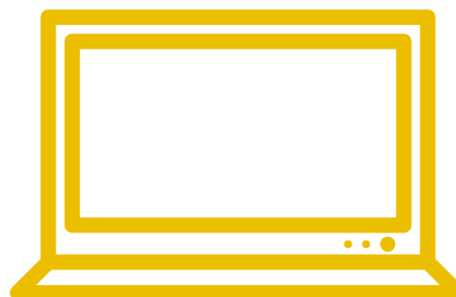
### March Funding Repository

Click the link below for current Funding and Scholarship Opportunities! This folder is **updated continuously**. Check back soon as opportunities come in!

- Sheryl R. Young Memorial Fellowship
- Colorado Scientific Society Research Grant
- Core Facility Shared Instrumentation Voucher

View **April** repository with [this link!](#)

View **March** repository with [this link!](#)



## Jobs and Internships



## March Job Repository

Click the link below for all Job and Internship Opportunities! This folder is **updated continuously with new positions**. Check back soon as opportunities come in!

- Big Rock Exploration Hiring
- Assistant Professor: Critical Mineral Resources
- Golden/Albuquerque Seasonal Field Assistant

View **April** repository with [this link](#)

View **March** repository with [this link](#).

## University Events & Happenings



### Get Noticed by Employers

Learn how to identify the skills you have developed in graduate school that are valuable to employers on **April 6th** from **12-1 PM**. Discover potential jobs that align well with these skills and how to effectively articulate them to employers. Register Below.

[Register Here](#)

### Teaching Asia with Maps - Jerry Crail Johnson Earth Sciences and Map Library

Join map enthusiasts on **Wednesday, April 8, from 2:00 p.m. to 3:00 p.m.** for an interactive workshop in collaboration with the Center for Asian studies on using cartography to teach Asian geographies and cultures. Participants will explore historical and contemporary maps to gain practical tools for global curriculum development. Register below.

[Register Here](#)



# External Opportunities Outside CU



## Wrangell Mountains Field Studies 2026

Earn six semester credits in Earth and Climate Sciences through the University of Maine by joining this field research program in the heart of Alaska's Wrangell-St. Elias National Park. From **June 22 to August 10**, students gain hands-on experience in glacier dynamics and ecology. Applications are reviewed on a rolling basis.

[Apply Here](#)

## Miss a Newsletter?

Check out past newsletters at [this link!](#)

## Just So You Know...

The graduate newsletter will be sent out each Thursday, so check back weekly for news, job and funding opportunities, and messages from your faculty. If you have something you would like to share in a future edition of the newsletter, please email [geoloffice@colorado.edu](mailto:geoloffice@colorado.edu).



[Our Company](#) | [Contact Us](#) | [FAQs](#) | [Privacy Policy](#)

Benson Earth Sciences | 2200 Colorado Ave | Boulder, CO 80309 US

[Unsubscribe](#) | [Update Profile](#) | [Constant Contact Data Notice](#)



Try email marketing for free today!