

BUILD Boulder

In CASE You Were Wondering – Project Update Newsletter #17 – October 13, 2017

CP007596 - EPRK - EUCLID AVENUE AUTOPARK ADDITION (290)

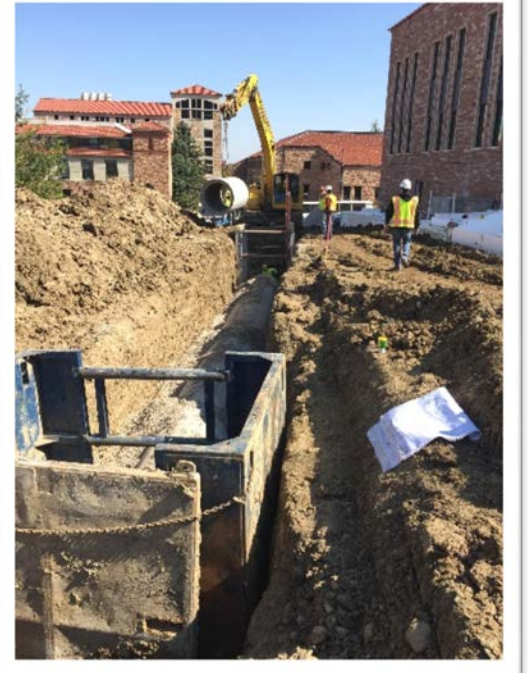
As always, feel free to contact Stephen Graziano with any questions or concerns. <http://www.colorado.edu/fm/case>

North Sidewalk Outage Update

As everyone is aware, we are reconfiguring the north sidewalk as part of this project. This work is being completed in phases and Phase 1 began September 25. Due to unforeseen circumstances, the start of Phase 2 (which includes the sidewalk outage in front of the TLC building) has been delayed. The recent rain and snow have saturated the soil so that the concrete sidewalks cannot be poured. Crews have continued to work to install the storm systems in the area, but even though the weather is clear, the soil remains saturated and they have not been able to prepare or place any of the concrete sidewalks. We are doing everything possible, including removing and replacing wet soil with dry, in order to get this work done as quickly as possible. There are variety of routes around the closure and campus pedestrians are maneuvering smoothly. Please let us know if you have any questions or concerns.

As of today (and subject to change), the phases will be as follows:

- **Phase 1 ends on November 7th – Main sidewalk outage.**
- **Phase 2 starts on November 7th and runs until November 14th – TLC front entrance closed.**
- **Phase 3 starts on November 15th and runs until December 7th – Triangle closed east of TLC entrance.**



Overall Project

Masons are finishing up on the east side of the building and windows are being put in place throughout. Drywall and interior glazing continue inside. The loading dock between CASE and the UMC remains a very busy spot, so for the safety of all, we continue to request that pedestrians, skaters, and bikers avoid using the dock as a thoroughfare.

Contact Info

Project Manager

Stephen Graziano
stephen.graziano@colorado.edu
Desk – 303-492-1102
Cell – 303-507-8383

Project Coordinator

Dena Heisner
dena.heisner@colorado.edu
Desk – 303-735-0282
Cell – 847-687-4029



Please continue to help us encourage pedestrians, bikers, and commuters to find alternate routes around the site to reduce congestion and maintain the safest environment possible throughout the project.