



In CASE You Were Wondering – Project Update

Newsletter #4 – August 15, 2016 – Garage Demo

CP007596 - EPRK - EUCLID AVENUE AUTOPARK ADDITION (290)

Thank you for your cooperation as we continue to establish the construction site with fencing, trailers, and signage. And thank you for your patience as everyone adjusts to the changes in pathways and garage access. **Construction begins Monday, August 22** with some demolition and rebuilding of garage walls, and we wanted to share some details about what to expect. **As always, feel free to contact Stephen Graziano with any questions or concerns.**

Contact Info

Project Manager

Stephen Graziano

stephen.graziano@colorado.edu

Desk – 303-492-1102

Cell – 303-507-8383

Project Coordinator

Dena Heisner

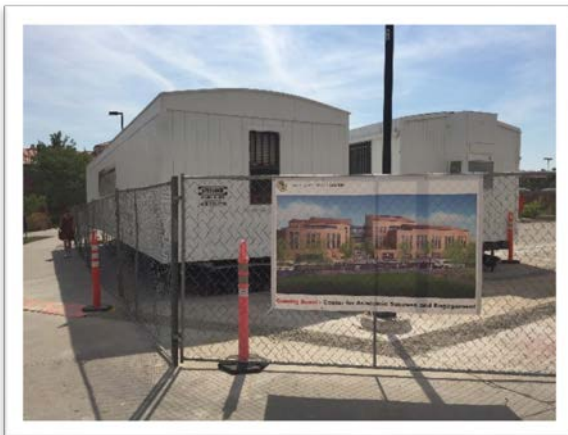
dena.heisner@colorado.edu

Desk – 303-735-0282

Cell – 847-687-4029

Garage Demolition Work – August 22 to October 10, 2016

In order to prepare the existing structure for the new steel frame, the existing perimeter walls of the top deck of parking will be removed and new walls will be constructed. This demolition and rebuilding will take place in phases. Rotating sections of parking on the top deck will be closed to accommodate this work. These areas will be well-marked and patrons will be encouraged to park on the lower levels for their own convenience. These phases will continue until the full shut-down of the garage in October. You can expect some additional noise in the area during this time.



Garage Full Closure –

October 10, 2016 to January 13, 2017

This closure will last 14 weeks, but the garage is to be reopened by the start of spring classes on January 17, 2017. In order to accommodate this closure, PTS is reworking parking lot 204 (across the street from the Euclid garage) to handle as much parking as possible. Signage will help direct patrons to the alternative parking. Once reopened, the top level of the garage will have a slightly different traffic flow which will be well-marked for patrons.



Please help us to encourage pedestrians, bikers, and commuters to find alternate routes around the site to minimize congestion and maintain the safest environment possible throughout the project.