

DOE, JANE ASEN-2200-001-1 VEH DESIGN FOR ENGINEERS Online Administration  
 Dept: AEROSPACE ENGIN Forms requested: 28 Returned: 20 College: Engineering/Applied Sci

Comparison info for dept, college, and campus is for your instructor group and the course level ONLY, using Spr 13, Fall 13, Spr 14, Fall 14, Spr 15 & Fall 15 data.

Group: OTH: Primary instructors not tenured/tenure-track Level: Lower division

Sections in comparisons: Dept: 30 College: 326 Campus: 7,258

Profile of your average ratings  
(with 95% confidence bands)

Item number and description	Your rating		Diff from			Percentile in			Number of responses							Averages in										
	Avg	Median	Dept	Coll	Campus	Dept	Coll	Campus	Lowest			Highest				Lowest		Highest				Dept	Coll	Campus		
									1	2	3	4	5	6	BL	SD	1	2	3	4	5	6				
2 Personal interest before enrolled	4.8	5.0	+	+	+	86	78	78	0	0	3	3	9	5	0	1.0										
3 Instr effectiveness encouraging interest	5.7	6.0	++	++	++	90	92	89	0	0	0	0	6	14	0	0.5										
4 Instr availability for assistance	5.7	6.0	+	++	+	86	87	82	0	0	0	2	2	15	1	0.7										
5 Intellectual challenge of course	4.1	4.0	0	0	0	30	26	29	0	1	7	5	2	4	1	1.3										
6 How much you learned in course	4.8	5.0	0	0	0	63	42	46	0	0	1	7	8	4	0	0.9										
7 Course overall	5.5	6.0	++	+	+	86	85	84	0	0	0	1	8	10	1	0.6										
8 Instructor overall	5.8	6.0	++	++	+	90	90	88	0	0	0	0	3	17	0	0.4										
9 Instr respect/professional treatment	5.9	6.0	+	0	0	76	60	59	0	0	0	0	2	17	1	0.3										
1 Hours/week spent on course (incl class)	4-6	4-6	0	0	0	46	31	51	1	10	2	3	0	0	4	0.9										

Hours/week scale: 0-3=1, 4-6=2, 7-9=3, 10-12=4, 13-15=5, 16+=6

Optional questions

Optional questions	Your rating		SD	Number of responses							
	Avg	Median		Lowest			Highest				
				1	2	3	4	5	6	BL	NA
B91 This class improved my understanding of the profession I plan to	4.8	5.0	1.0	0	0	2	6	6	6	0	0
B92 My confidence to succeed as a student was enhanced.	5.1	5.0	0.9	0	0	1	3	9	7	0	0
B93 The instructor's preparation for class was...	5.8	6.0	0.4	0	0	0	0	4	16	0	0
B94 This course prepared me for my chosen career.	5.1	5.0	0.8	0	0	0	5	7	8	0	0

For more info, see below and [www.colorado.edu/fcq/stats](http://www.colorado.edu/fcq/stats)

Standard item correlations

	2	3	4	5	6	7	8	9
1	.2	-.2	-.1	.2	-.1	-.1	.0	-.5
2		.3	.2	.3	.5	.6	.2	.3
3			.4	.0	.2	.4	.3	.2
4				.5	.4	.6	.9	.1
5					.7	.5	.4	-.2
6						.8	.4	.1
7							.6	.3
8								.3

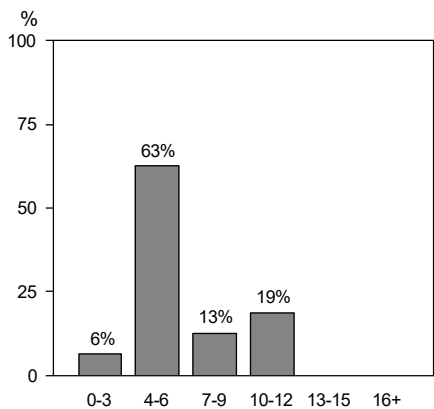
Correlation coefficients range from -1.0 to 1.0, and indicate the direction and strength of the relationship between two items.

Occasionally some (but not all) correlations will be missing. This can happen if all students give the same rating on a particular item.

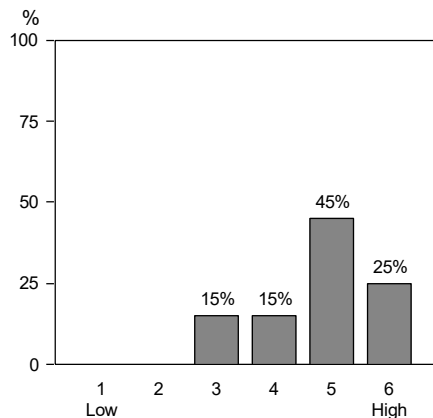
Median is the middle score when all ratings are rank-ordered. SD (standard deviation) is the DISAgreement among raters. Difference of your average from the group average for Dept, College, and Campus ranges from --- to +++. 0 = negligible difference. Percentile = percentile of your average rating within a particular group: Dept, College, and Campus. \*\* 'Diff from' and 'Percentile in' statistics not displayed if comparison group has fewer than 10 sections. A confidence band indicates an interval within which we are 95% confident that the 'true' value of the average lies. See [www.colorado.edu/fcq](http://www.colorado.edu/fcq) for details on all statistics in report, and for FCQ results from the last 8 years. Blank (BL) and non-applicable (NA) responses are tallied but excluded from averages.

SEE GRAPHS ON REVERSE SIDE

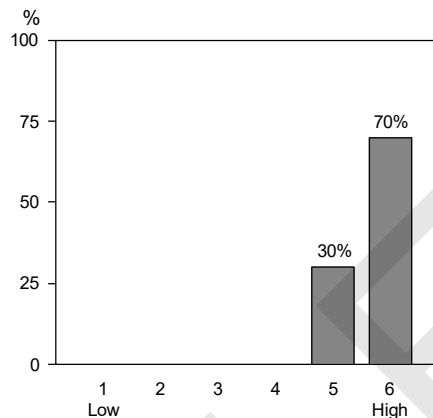
# FCQ Results, Spring 2016, ASEN-2200-001 -- DOE, JANE



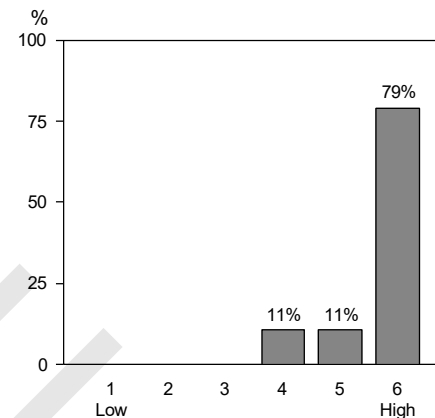
1: Hours/week spent on course (incl class)



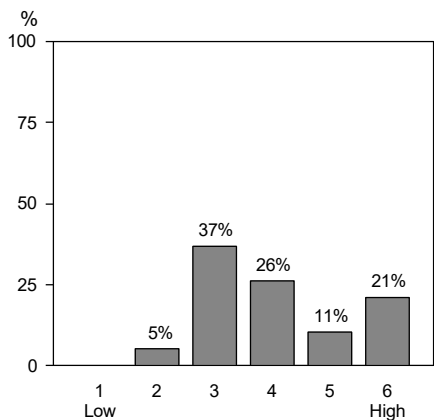
2: Personal interest before enrolled



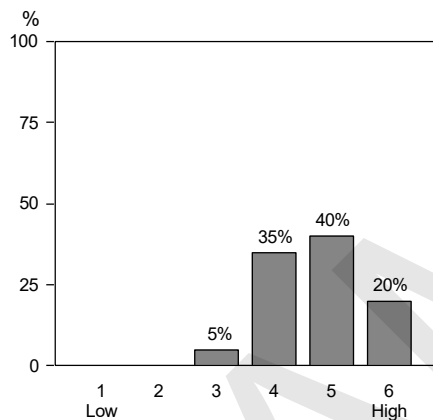
3: Instructor encourages interest



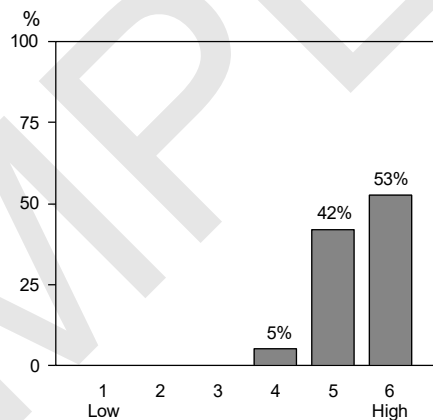
4: Instructor availability for assistance



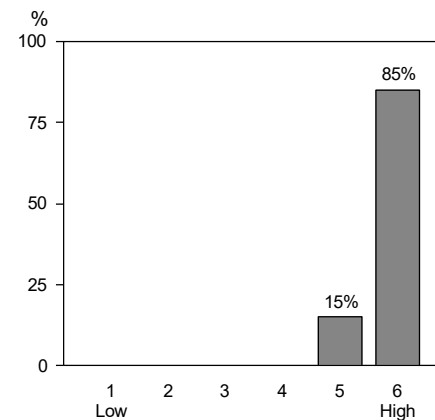
5: Intellectual challenge of course



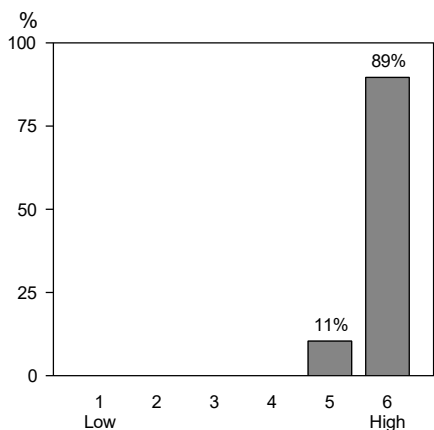
6: How much learned in course



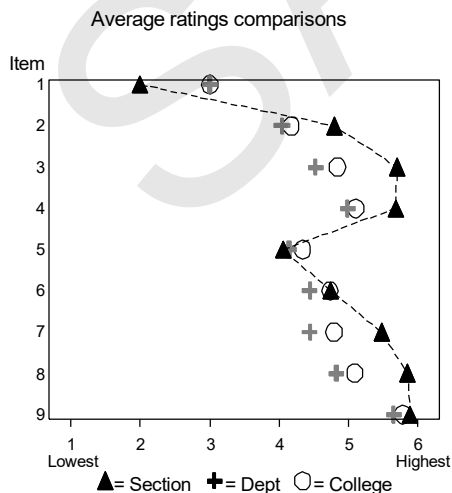
7: Course overall



8: Instructor overall



9: Instructor respect for students



Relationship of "Course Overall" ratings to Personal interest before enrolled and Hours/week spent on course (incl class)

