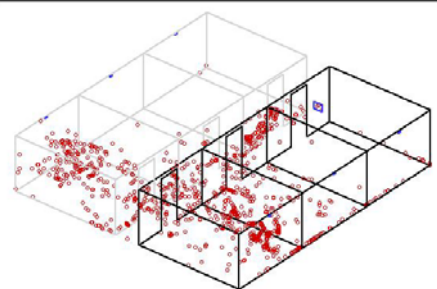
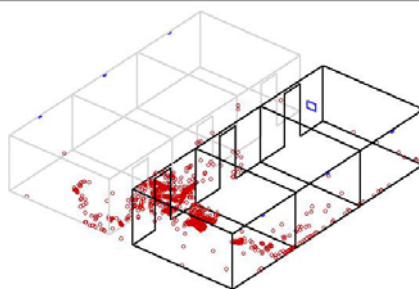
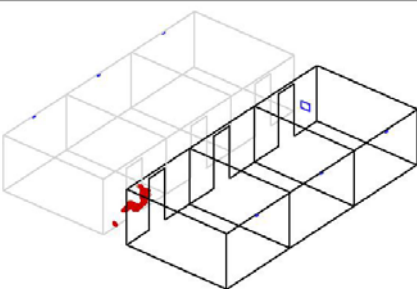
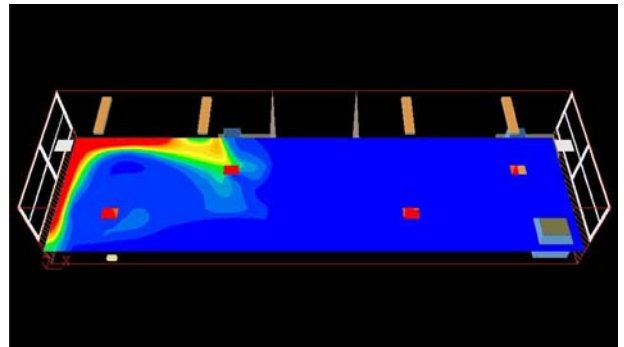
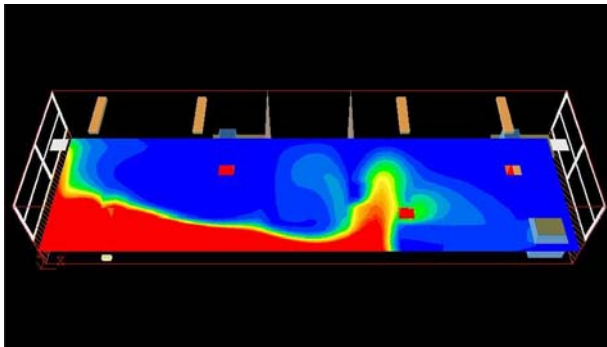
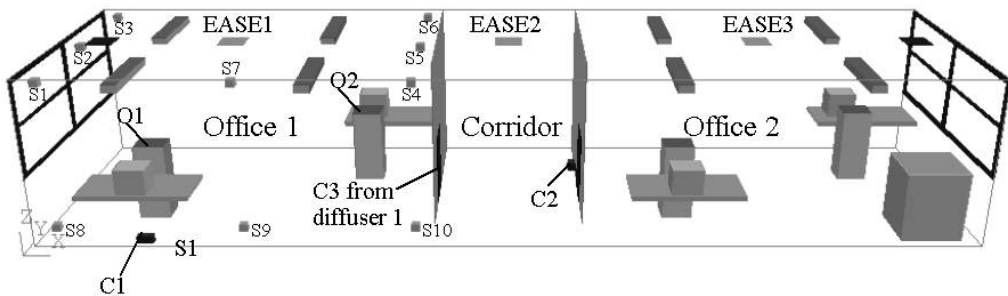
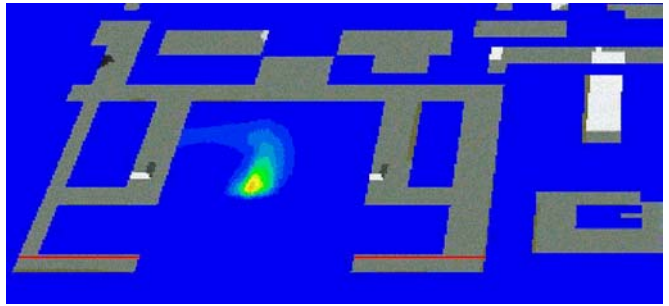
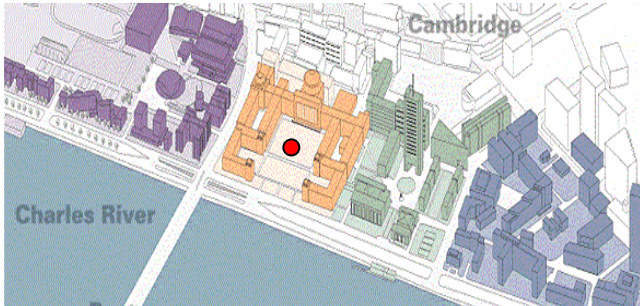


Protecting Buildings from Chemical and Biological Agent Attacks

- CBA: highly-toxic, colorless, odorless, fast-dispersed, environment-determined
- Early warning and emergence response systems:
 - detecting the attack
 - isolating the contaminated air in some spaces
 - indicating the safe paths for evacuating occupants
 - cleaning the contaminated air

- Macro/micro scales
- Multi-phases
- Multi-disciplines



Particulate CBA