



Environmental Engineering (EVEN) Degree Guidelines

Academic Year 2011-2012

College of Engineering and Applied Science

University of Colorado at Boulder

Environmental Engineering Program

428 UCB (U.S. Mail)
1111 Engineering Drive, Engineering Center OT 518 (street address)
University of Colorado
Boulder, Colorado 80309-0428
phone: 303 735 0253
fax: 303 735 7317
web: <http://www.colorado.edu/engineering/even/>

Environmental Engineering Program Staff

Director: Professor Jana Milford, ECME 214, 303 492 5542, jana.milford@colorado.edu
Program Coordinator: Laurels Sessler, ECOT 518, 303 735 0253, laurels.seessler@colorado.edu

Version: August 2011

latest and previous versions at <http://www.colorado.edu/engineering/even/evenbs.htm>

Contents

1. Overview of Guidelines and Introduction to Environmental Engineering

1.1. Overview of Environmental Engineering	3
1.2. History of the Environmental Engineering Program.....	3
1.3. Mission and Educational Objectives	4
1.4. Program Outcomes	4

2. Environmental Engineering Degree Programs

2.1. Bachelor of Science in Environmental Engineering (EVEN BS).....	5
2.2. Dual Degrees.....	8
2.3. Concurrent Bachelor of Science/Master of Science Degree (EVEN BS/CVEN MS).....	8
2.4. Certificate Programs and Minors.....	8

3. Advising

3.1. Advising Process	9
3.2. Program Contact with Students (Email)	9
3.3. Academic Records.....	9
3.4. Additional Advising Resources	10
3.5. Faculty Advisor Assignments.....	10

4. Academic Policies

4.1. Prerequisite and Co-Requisite Courses.....	10
4.2. Transfer Credit.....	10
4.3. Humanities and Social Sciences Electives (including communication/writing requirement)	12
4.4. Technical Electives	14
4.5. Free Electives.....	15
4.6. Air or Earth Sciences Laboratory or Field Course	15
4.7. Independent Study.....	15
4.8. Senior Thesis	16
4.9. Engineering Co-op Program	16
4.10. Petitions	16
4.11. Academic Honesty	16

5. Graduation Requirements

5.1. Requirements for EVEN BS Degree.....	17
5.2. Fundamentals of Engineering Examination.....	18
5.3. Requirements for Dual Degrees.....	18

6. Society of Environmental Engineers (SEVEN).....

7. Faculty Directory.....

Forms and Appendices.....

Degree Requirements Worksheet for EVEN BS Degree	22
Technical Electives Suggestions	24
Table of Prerequisites and Co-requisites for Required Courses	28
Useful Websites	29

1. Overview of Guidelines and Introduction to Environmental Engineering

The *Environmental Engineering (EVEN) Degree Guidelines* provide an outline of the curriculum and policies of the Environmental Engineering (EVEN) degrees offered by the College of Engineering and Applied Science of the University of Colorado at Boulder. These guidelines are written primarily for students and faculty advisors of the Environmental Engineering Program. The current version of these Guidelines and versions dating back to the beginning of the Program in 1998 are kept on the Program's web site (<http://www.colorado.edu/engineering/even/evenbs.htm>).

General curriculum and policy information for students is also available from the Office of Student Services in the Dean's Office of the College of Engineering and Applied Science (<http://engineering.colorado.edu/engineering/students/advising.htm>). Further information on academic support programs, advising, and registration is available on the web at the College's Undergraduate Student Services web page (<http://engineering.colorado.edu/engineering/students/undergraduate.htm>).

Information on courses offered, including course descriptions, is available in the *University of Colorado at Boulder Catalog* (<http://www.colorado.edu/catalog/>). The course schedule for each semester is available to CU students through the MyCUInfo portal (<http://mycuinfo.colorado.edu>). A .pdf file of course listings, alphabetical by college and department, can be found on the Continuing Education Access site: <http://conted.colorado.edu/programs/access/> (This document is not updated past its "publication date", however, so check the online schedule for the most recent information.)

1.1. Overview of Environmental Engineering

Environmental engineers play a vital role in maintaining the quality of both human environmental systems and the natural environment. Environmental engineering encompasses the scientific assessment and development of engineering solutions to environmental problems impacting the biosphere, land, water, and air quality. Environmental issues affect almost all commercial and industrial sectors, and are a central concern for the public, for all levels of government, and in international relations. These issues include safe drinking water, wastewater processing, solid and hazardous waste disposal, outdoor air pollution, indoor air pollution and transfer of infectious diseases, human health and ecological risk management, prevention of pollution through product or process design, and renewable and sustainable energy sources.

To address these challenges, environmental engineers often encounter challenging problems that must be solved in data-poor situations as members of multidisciplinary teams. Environmental problems require creative solutions with contributions from scientists, lawyers, business people, and the public. Good communication skills, as well as technical proficiency, are essential for success in this arena. In addition, technology designed to address environmental problems is marketed globally, opening up increasing opportunities for international work in the environmental engineering field.



The Engineering Center at the University of Colorado at Boulder

1.2. History of the Environmental Engineering Program

The Environmental Engineering Program at the University of Colorado at Boulder originated with a college-wide faculty committee that met during the 1993-1994 academic year to develop a multi-disciplinary curriculum for a Bachelor of Science degree in Environmental Engineering. The committee was headed by Prof. John Daily of Mechanical Engineering. The degree program was intended to supplement environmental engineering options that were offered through the Departments of Chemical and Biological Engineering and Civil, Environmental, and Architectural Engineering (the Department of Mechanical Engineering now offers an environmental engineering option as well).

The initiative to develop the EVEN BS degree and the Environmental Engineering Program to administer the degree was motivated by recognition that (1) environmental engineering had matured into a full-fledged discipline of its own and (2) environmental engineering intersected with the traditional disciplines of chemical, civil, and mechanical engineering, but was not adequately covered by any single discipline. The faculty committee decided that students intending to work in environmental engineering would benefit from a curriculum that focused on environmental engineering and related courses regardless of which department offered those courses. At the same time, the existing environmental engineering options could be retained in the departments for students who were interested in environmental engineering but wanted to pursue traditional chemical, civil or mechanical engineering degrees.

The proposed EVEN BS degree program was approved by the faculty of the College of Engineering and Applied Science in the spring of 1994. The faculty committee then prepared a full proposal for the new degree program for the Colorado Commission on Higher Education (CCHE), and the new EVEN BS degree program was approved in the spring of 1998. The first Director of the Environmental Engineering Program was Prof. Jana Milford of Mechanical Engineering. Students began entering the program in the fall of 1998. The first degree was awarded in December 1999 (to a student who transferred into the program as a third-year student).

In approving the new degree, CCHE relied on the College's intent to deliver the EVEN BS degree using existing courses and faculty. To this end, the program is administered by the College, and operates through the participation of affiliated faculty from Aerospace Engineering Sciences, Chemical and Biological Engineering, Civil, Environmental, and Architectural Engineering, and Mechanical Engineering. The College provides support for a faculty Director (currently Prof. Milford, in her second term), a Program Coordinator, part-time administrative support, and teaching support for courses to supplement the EVEN curriculum. The four departments that participate in the program are committed to regularly offering the courses that comprise the EVEN curriculum, coordinating to avoid

scheduling conflicts, and sharing academic advising and other faculty service requirements.

During the 2002-2003 academic year, the Environmental Engineering Program applied for accreditation of the EVEN BS degree with the Engineering Accreditation Commission of ABET (Accreditation Board of Engineering and Technology, <http://www.abet.org>). The ABET examiners were thoroughly satisfied with the EVEN BS degree and ABET granted accreditation to the degree in September 2003. The Environmental Engineering Program completed the first major revision of the EVEN curriculum for the 2004-2005 academic year, and was re-accredited in 2006. The Program is undergoing another ABET accreditation review in 2011.



EVEN students on a field trip for the CVEN 3434 Introduction to Applied Ecology course with Professor Diane McKnight.

1.3. Mission and Educational Objectives

The EVEN faculty, its Professional Advisory Board (representing prospective employers of our graduates), and EVEN alumni and current students have contributed to the creation of the Program's mission and the educational objectives of the EVEN BS degree.

The **mission** of the Environmental Engineering Program is to provide a multidisciplinary undergraduate environmental engineering education that emphasizes mastery of principles and practices, inspires service for the global public good, endows a desire for life-long learning, and prepares students for broad and dynamic career paths in environmental engineering.

The **educational objectives** of the EVEN BS degree are to produce students who reach the following achievements three to five years after graduation:

1. EVEN graduates have become established in professional careers or earned advanced degrees;
2. EVEN graduates have applied multidisciplinary approaches to manage the unique challenges and balance the competing social, political, economic, and technical goals of environmental problems and solutions; and
3. EVEN graduates have served the needs of our society and protected the future of our planet in an ethical manner.

1.4. Program Outcomes

A list of program outcomes for EVEN graduates was developed that satisfies the requirements of ABET in the *Criteria for Accrediting Engineering Programs* for general engineering programs (ABET Criterion 3) and for environmental engineering programs as developed by the American Academy of Environmental Engineers (AAEE) and cooperating societies. As defined by ABET, outcomes are "statements that describe what students are expected to know and are able to do by the time of graduation" (ABET, 2010).¹

The Environmental Engineering Program demonstrates that

<ol style="list-style-type: none"> i. EVEN graduates have sufficient knowledge of engineering, mathematics, and science fundamentals to succeed in environmental engineering practice or advanced degrees; ii. EVEN graduates have sufficient knowledge of advanced environmental engineering applications and complementary natural sciences to succeed in environmental engineering practice or advanced degrees; iii. EVEN graduates have sufficient knowledge of engineering approaches to problem solving (hypothesis, design, testing; team work) to succeed in environmental engineering practice or advanced degrees; iv. EVEN graduates have sufficient knowledge of basic engineering skills and tools (computer, laboratory, and field) to succeed in environmental engineering practice or advanced degrees; v. EVEN graduates have adequate writing and oral presentation skills to succeed in environmental engineering practice or advanced degrees; vi. EVEN graduates have adequate understanding of the social, economic, political, and ethical context of environmental problems and solutions; vii. EVEN graduates have adequate opportunity to include service at the local, state, national, or global levels as an important part of their environmental engineering education; and viii. EVEN graduates will recognize the importance of life-long learning by seeking advanced degrees and pursuing continuing education. 	Outcomes
---	-----------------

The curriculum that has been developed and the content of those courses help to ensure that the Environmental Engineering Program satisfies these outcome goals. Extracurricular activities, internships, co-ops and participation in research also contribute to satisfying these goals. Evaluation of courses and surveys of graduating seniors and alumni help us to document that the EVEN Program

¹ ABET Engineering Accreditation Commission, *Criteria for Accrediting Engineering Programs: Effective for Evaluations During the 2011-2012 Accreditation Cycle*, Baltimore, MD,, 2010.

successfully achieves these outcomes. Student performance on the Fundamentals of Engineering (FE) exam also documents our success. Review of course syllabi and student work by faculty and the Advisory Board ensures on-going evaluation and improvement of our curriculum to best serve our students and the Environmental Engineering profession.

2. Environmental Engineering Degree Programs

2.1. Bachelor of Science Degree in Environmental Engineering

2.1.1. Overview of EVEN BS Degree

The Bachelor of Science degree in Environmental Engineering at the University of Colorado provides preparation for professional proficiency or graduate training in environmental engineering in a four-year curriculum.

The curriculum includes courses in engineering fundamentals and applications, advanced mathematics, chemistry, physics, biology, and earth science, as well as the arts, humanities and social sciences. Courses specific to environmental engineering practice include water chemistry, microbiology, and air pollution control. In addition, environmental engineering requires hands-on laboratory experiences, up-to-date skills in the use of computers for modeling and data analysis, and experience in the design of environmental engineering systems. Many of the required engineering courses in the Bachelor of Science curriculum are delivered by the departments of Chemical and Biological Engineering, Civil, Environmental, and Architectural Engineering, and Mechanical Engineering. The curriculum also includes three Option courses, three technical elective courses and a free elective. The three Option courses represent an area of specialization in environmental engineering selected by the student beginning in the third year. The curriculum includes six sets of prescribed Option courses in these areas of specialization:

- Air Quality
- Applied Ecology
- Chemical Processing
- Energy Conversion Fundamentals
- Environmental Remediation
- Water Resources and Treatment

In addition to these prescribed Options, students may also formulate their own sequence of Option courses (referred to as a “Special Option”) representing an area of specialization not included in the Options listed above. This selection must be approved through petition to the Environmental Engineering Program. Examples of special option topics include Energy and Industrial Monitoring, Remediation and Ecology, and Engineering for Developing Communities (EDC; see program website at: <http://ceae.colorado.edu/mc-edc/>).

Students in the program are also encouraged to participate in research through independent study projects, a senior thesis, the Undergraduate Research Opportunities Program (UROP), the Discovery Learning Apprenticeship Program (<http://engineering.colorado.edu/activelearning/discovery.htm>), or as undergraduate research assistants in sponsored research programs.

2.1.2. Curriculum for EVEN BS Degree

The following section contains the curriculum table for the EVEN BS degree. The curriculum represents a “contract” of sorts with incoming students – for students entering the program during the current academic year, completion of this curriculum with a satisfactory grade point average is the requirement for graduation. The curriculum also represents a guarantee that the courses listed (or acceptable substitutes) will be available in the semesters listed.

The curriculum is somewhat dynamic despite its contractual nature. Minor changes may be made by the Program during the academic year, and major changes may be made between academic years. To meet graduation requirements, students are expected to follow the curriculum in effect for the academic year that they matriculated into the program; therefore, students should keep a copy of the *Environmental Engineering (EVEN) Degree Guidelines* for that year. An archive of the Guidelines is retained on the program’s web site (<http://www.colorado.edu/engineering/even/evenbs.htm>). Students may elect to follow a later curriculum revision with program approval; however, students may not elect to follow a curriculum in effect before they started the program, and may not combine curricula for different years.

The curriculum below shows the recommended sequence of courses. Courses marked with an asterisk (*) are offered only in the semester shown (fall or spring). Other courses are offered in both semesters, and sometimes in the summer. Students may take courses in terms other than those shown, but must be careful to meet prerequisites or co-requisites for each course. The air or earth sciences lab or field course and the free elective (both listed in the fourth year) may be taken in any semester.

Many of the required courses in the EVEN BS curriculum (solid mechanics, engineering economics, fluid mechanics, thermodynamics, heat transfer, probability and statistics) may be satisfied by courses from different engineering departments. Students may choose a course from any of the approved options for each requirement; however, students should evaluate these choices carefully depending on their major interest in environmental engineering. For example, a student interested in the Air Quality Option might want to take the Mechanical Engineering courses for solid mechanics, fluid mechanics, thermodynamics, and heat transfer. A student interested in the Chemical Processing Option would do best to choose chemical engineering (CHEN) courses; in fact, some CHEN courses are required for the Chemical Processing Option.

For certain courses in the EVEN BS degree curriculum, students may encounter questions about prerequisite and co-requisite course requirements not being met. If students are following the recommended curriculum sequence there is no need for concern; the Environmental Engineering Program has consulted in detail with the departments and faculty offering these courses to ensure that the sequence of courses in the EVEN curriculum is appropriate for engineering students.

Guidance on selection of Option, Humanities and Social Science (H&SS), and technical elective courses is offered in Section 4.

EVEN BS Degree, 2011-2012 Academic Year

Fall, First Year		Spring, First Year	
APPM 1350 Calculus 1 for Engineers	4	APPM 1360 Calculus 2 for Engineers	4
CHEM 1211 General Chemistry for Engineers	3	GEEN 1300 Intro to Engineering Computing	3
CHEM 1221 General Chemistry Laboratory	2	PHYS 1110 General Physics 1	4
EVEN 1000 Introduction to Environmental Engineering (*)	1	Technical Elective I ²	3
GEEN 1400 Engineering Projects	3	H&SS Elective II ³	3
H&SS Elective I ³	3		
	16		17
Fall, Second Year		Spring, Second Year	
APPM 2350 Calculus 3 for Engineers	4	APPM 2360 Intro Differential Eqns with Linear Algebra	4
PHYS 1120 General Physics 2	4	CHEM 4521 Physical Chemistry for Engineers (*)	3
PHYS 1140 Experimental Physics 1	1	CHEM 2120 Material and Energy Balances	3
Solid Mechanics ⁴	3	CVEN 3414 Fundamentals of Environmental Engineering	3
H&SS Elective III ³	3	H&SS Elective IV ³	3
	15		16
Fall, Third Year		Spring, Third Year	
CVEN 4404 Water Chemistry (*)	3	CVEN 4484 Introduction to Environmental Microbiology (*)	3
CVEN 4414 Water Chemistry Lab (*)	1	MCEN 4131 Air Pollution Control (*)	3
Fluid Mechanics ⁵	3	Heat Transfer ⁶	3
Thermodynamics ⁷	3	Probability and Statistics ⁸	2
Engineering Economics ⁹ (*)	3	Option Course I ¹⁰	3
Required Communication Course ¹¹	3		
	16		14
Fall, Fourth Year		Spring, Fourth Year	
CVEN 4444 (5834) Environmental Engineering Processes (*)	3	CVEN 4333 Engineering Hydrology (*)	3
H&SS Elective V ³	3	CVEN 4424 Environmental Organic Chemistry (*)	3
Free Elective	3	CVEN 4434 Environmental Engineering Design (*)	4
Option Course II ¹⁰	3	Option Course III ¹⁰	3
Air or Earth Science Laboratory/Field Course ¹²	3	Technical Elective III ² /Senior Thesis ¹³	3
Technical Elective II ² /Senior Thesis ¹³	3		
	18		16

* Only offered in the semester shown (not including summer offerings).

Total Credit Hours 128

² A total of 9 credit hours of technical electives is required, from engineering, mathematics or sciences. Three TE credits may be lower division (1000-, 2000-level); remaining TE credits must be upper division (3000+). Three TE credits must be in the earth sciences, either lower or upper division. An independent study or senior thesis may be completed as technical electives for up to 6 credits.

³ A total of 15 credit hours of humanities and social sciences (H&SS) electives is required. At least six hours must be at the upper division level.

⁴ Solid Mechanics options: CVEN 2121 Analytical Mechanics (F,S), GEEN 3851 Statics for Engineers (Sum), or MCEN 2023 Statics and Structures (F)

⁵ Fluid Mechanics options: CHEN 3200 Chemical Engineering Fluid Mechanics (S, required for Chemical Processing Option), CVEN 3313 Theoretical Fluid Mechanics (S), GEEN 3853 Fluid Mechanics for Engineers (Sum), or MCEN 3021 Fluid Mechanics (F)

⁶ Heat Transfer options: CHEN 3210 Chemical Engineering Heat Transfer (F, required for Chemical Engineering Option) or MCEN 3022 Heat Transfer (S)

⁷ Thermodynamics options: AREN 2110 Thermodynamics (F,S), CHEN 3320 Chemical Engineering Thermodynamics (F; required for Chemical Processing Option), GEEN 3852 Thermodynamics for Engineers (Sum), or MCEN 3012 or 3208 Thermodynamics (F, required for Air Quality Option)

⁸ Probability and Statistics options: APPM 4570 Statistical Methods (F,S), CHEN 3010 Applied Data Analysis (F), CVEN 3227 Probability, Statistics, and Decision (S), MCEN 3037 Experimental Design and Data Analysis (S)

⁹ Engineering Economics options: CVEN 4147 Civil Engineering Systems, EMEN 4100 Business Methods and Economics for Engineers (F).

¹⁰ Option courses are specified on the following page.

¹¹ Communication: GEEN 3000 Professional Communications for Engineers, HUEN 1010 Intro to the Humanities (F,S), HUEN 3100 Humanities for Engineers 1 (F,S), PHYS 3050 Writing in Physics: Problem Solving and Rhetoric (F), WRTG 3030 Writing on Science and Society (F,S), or WRTG 3035 Technical Communication and Design (F, S).

¹² Air or Earth Science Lab/Field Course: A 3 credit hour course with a significant laboratory or field component related to air quality or earth science. If course is less than 3 credits, the difference is required as an upper division technical elective. Options: ATOC1070 Weather and the Atmosphere Lab, CVEN3708 Geotechnical Engineering, EVEN4100 Environ. Sampling & Analysis, GEOG4411 Methods of Soil Analysis (every other F), GEOL1030 Intro to Geology 1 Lab, GEOL2700 Intro to Field Geology, GEOL3010 Intro to Mineralogy (F), GEOL4716 Environmental Field Geochemistry (S)

¹³ Senior Thesis: a senior thesis can be completed on a single research topic, with faculty approval and direction, and can apply toward technical elective requirements.

Beginning in the spring of their third year, students must select an Option, an area of specialization in environmental engineering. For each option, a total of 9 credit hours of option courses is required. Students may choose from the lists of possible Option courses listed below. Special topics courses may also be approved on a case-by-case-basis. See websites listed under each option for more information, including specific curricula and courses, faculty, research, jobs and employers and other professional opportunities and links. Note that not all of the courses listed are offered every year, denoted by I*.

Air Quality Option (<http://www.colorado.edu/engineering/even/air.htm>)

- ATOC 3500 Air Chemistry and Pollution (3 credits, S; prerequisite: two semesters chemistry)
- ATOC 4720 Introduction to Atmospheric Physics and Dynamics (3 credits, S; prereq: APPM 1350, PHYS 1110)
- CHEM 4541 Physical Chemistry Lab for Engineers (2 credits, I*; prerequisite or co-requisite: CHEM 4521 or CHEM 4531)
- MCEN 3032 Thermodynamics 2 (3 credits, S; prerequisite: MCEN 3012 Thermodynamics or equiv.)
- MCEN 4228 Environmental Modeling (3 credits, S; prerequisites: chemistry, fluid mechanics, computer programming)
- MCEN 4228 Sustainable Energy (3 credits, I*)

Applied Ecology Option (<http://www.colorado.edu/engineering/even/ecology.htm>)

- CVEN 3434 Intro to Applied Ecology (required for this option, 3 credits, S; prerequisites: CHEN 1211-1221 or CHEM 1111)
- EBIO 2070 Genetics: Molecules to Populations (4 credits; prerequisites: CVEN 3434 with instructor consent or EBIO 1240)
- EBIO 3270 Ecosystem Ecology (3 credits, S; prerequisites: CVEN 3434 or EBIO 1240, EBIO 2040 or EBIO 3020[†])
- EBIO 4020 Stream Biology (3 credits, F; prerequisites: CVEN 3434 or EBIO 1240, EBIO 2040[†])
- EBIO 4030 Limnology (3 credits, S; prerequisites: CVEN 3434 or EBIO 1240, EBIO 2040[†])
- EBIO/GEOL/ENVS 4160 Introduction to Biogeochemistry (3 credits; prerequisite: CHEM 1011 or higher, EBIO 3270 or GEOL 3320)
- GEOG 4311 Watershed Biogeochemistry (3 credits, S; prerequisite: GEOG 1011, GEOG 3511)

Chemical Processing Option (<http://www.colorado.edu/engineering/even/chemproc.htm>) Students must also take CHEN 3200, 3210 & 3320.

- CHEN 3220 Chemical Engineering Separations and Mass Transfer (required for this option, 3 credits, S; prerequisites: CHEN 3200, CHEN 3320; co-requisite: CHEN 3210 or MCEN 3022)
- CHEN 4330 Chemical Engineering Reaction Kinetics (required for this option, 3 credits, S; prereqs: CHEN 3320, CHEN 3210 or MCEN 3022)

One course from among the following:

- CHEN 3331 Organic Chemistry 2 (4 credits, prerequisite: CHEM 3311-21; prereq or co-req CHEM 3341)
- CVEN 3424 Water and Wastewater Treatment (3 credits, S, prerequisite: CVEN 3414)
- CVEN 4474 Hazardous and Industrial Waste Management (3 credits, F; prerequisite: CVEN 3414)

Energy Conversion Fundamentals Option (<http://www.colorado.edu/engineering/even/energy.htm>)

- ECEN 3010/MCEN 3017 Circuits and Electronics (required for this option, 3 credits; prerequisites: APPM 2360, PHYS 1140)
- MCEN 3032 Thermodynamics 2 (required for this option, 3 credits, S, prereq. MCEN 3012, MCEN 3021 or equivalents)

One course from among the following:

- AREN 3130 Building Energy Laboratory (3 credits, S, prereq. AREN 3010)
- CHEN 4838 Energy Fundamentals (3 credits, F; prerequisite: thermodynamics)
- CVEN 5020 Building Energy Audits (3 credits, F, prereq. AREN 3010 or equivalent)
- CVEN 5050 Advanced Solar Design (3 credits, F)
- MCEN 4228 Sustainable Energy (3 credits, F; prerequisite: thermodynamics)
- MCEN 4228 Wind Energy (3 credits, S, limited space available, restricted to seniors, prerequisites: fluid mechanics, system dynamics)

Environmental Remediation Option (<http://www.colorado.edu/engineering/even/remediation.htm>)

- CVEN 4353 Groundwater Engineering (3 credits, F; prerequisite: CVEN 3313 or equivalent fluid mechanics course)
- CVEN 4474 Hazardous and Industrial Waste Management (3 credits, F; prerequisite: CVEN 3414)
- EVEN 4100 Environmental Sampling and Analysis (3 credits, I*; prerequisites: CVEN 3454, CVEN 4424 or equiv)
- GEOL 3030 Introduction to Hydrogeology (3 credits, F; prerequisites: GEOL 1010 or 1060, APPM 1350 or instr consent)
- GEOL 4716 Environmental Field Geochemistry (2 credits, S; prerequisites: GEOL 2700, CHEN 1211[†])

Water Resources and Treatment Option (<http://www.colorado.edu/engineering/even/water.htm>)

- CVEN 3323 Hydraulic Engineering (3 credits, F; prerequisite: CVEN 3313 or equivalent fluid mechanics course)
- CVEN 3424 Water and Wastewater Treatment (3 credits, S; prerequisite: CVEN 3414)
- CVEN 4353 Groundwater Engineering (3 credits, F; prerequisite: CVEN 3313 or equivalent fluid mechanics course)
- CVEN 4474 Hazardous and Industrial Waste Management (3 credits, F; prerequisite: CVEN 3414)
- CVEN 5393/ECON 6555 Water Resources Development and Management (3 credits, F; prerequisite: senior or graduate)
- GEOG 4501 Water Resources and Water Management of the Western U.S. (3 credits)
- MCEN 4228 Environmental Modeling (3 credits, F; prerequisites: chemistry, fluid mechanics, computer programming)

*I Offered intermittently

† or by instructor consent as arranged by the Environmental Engineering Program

Special Option

Students with unique educational goals may formulate a personalized sequence of three courses (9 credit hours) as the Option sequence. To do so, students must present their Option plan to their faculty advisor and submit a Special Option Proposal to the Environmental Engineering Program for approval. A special option must have a specific, well-thought-out purpose related to your education or career goals (i.e., "scheduling conflict" is not an acceptable reason for a special option.) Ordinarily, special option courses should be upper division.

2.2. Dual Degrees

Students in the College of Engineering and Applied Science may obtain Bachelor of Science degrees in two engineering disciplines or one degree in engineering and a second degree from a department in another college or school of the University. Students must satisfy the curricula for both programs and may need to complete additional credit hours beyond the larger minimum credit hour requirement. Currently a minimum of 15 additional credit hours are required for each additional major.

Colorado residents should be aware that the College Opportunity Fund (COF) may not cover all tuition costs associated with a double degree program (those beyond 145 semester credit hours).

2.3. Concurrent Bachelor of Science/Master of Science Degree

The Environmental Engineering Program is cooperating with the Department of Civil, Environmental, and Architectural Engineering to offer concurrent EVEN BS/CVEN MS degrees in a five-year curriculum. The purpose of the concurrent EVEN BS/CVEN MS degrees is to allow capable students to gain greater depth of knowledge in environmental engineering by jointly pursuing BS and MS degrees. The concurrent degree program offers students greater flexibility in scheduling technical electives and graduate courses.

To fit the BS and MS degrees in only five years, students are allowed to count 6 credit hours taken at the graduate level for both the EVEN BS and CVEN MS degrees. Students must first complete the four-year Environmental Engineering Bachelor of Science curriculum (Section 2.1); they then complete the requirements of the CVEN MS degree.

Students seeking to pursue the concurrent EVEN BS/CVEN MS degrees must have a minimum grade point average of 3.25 when they submit an application for admission to the program. Students are expected to submit an application during the sixth or seventh semester of their undergraduate program in EVEN (75 to 110 credit hours). Applications are made to the Department of Civil, Environmental, and Architectural Engineering. The following items are needed to complete an application:

- Concurrent EVEN BS/CVEN MS Degrees application form (no application fee)
- Four letters of recommendation
- University of Colorado Application for Graduate Admission form, Part II only
- Certification by the EVEN Program that the required number of coursework hours have been completed
- Copy of internal transcript

The application deadlines are January 15 for admission to the program for the following fall and October 30 for admission for the following spring semester.

To continue in the program, students must maintain full-time status with a cumulative GPA of 3.25 to remain in the program. In addition, to count the two graduate courses (6 credit hours) for both the EVEN BS and CVEN MS degrees, the student must achieve a grade point average of at least 3.5 in the 24 credit hours taken immediately after admission to the program. For the CVEN MS, students may complete the requirements for either the Plan I (thesis) or Plan II (course work only) Master of Science degrees.

Students admitted to the concurrent EVEN BS/CVEN MS degrees program who do not meet the requirements for completing the concurrent degrees or who elect not to complete the concurrent degrees may count appropriate graduate courses toward the technical elective (up to 9 credit hours) and option course (up to 9 credit hours) requirements for the EVEN BS.

2.4. Certificate Programs and Minors

The College of Engineering and Applied Science offers four certificate programs, which can be obtained along with the EVEN degree:

Certificate in Engineering Science and Society: <http://engineering.colorado.edu/academics/ess.htm>. This program considers the question: "How can the increasingly vast powers of science be guided toward the solution of human problems and kept from aggravating them?" Students are guided toward courses that will help them identify and become engaged in the ethical and policy issues, and the risks as well as the benefits of engineering, applied science and technology.

Engineering Entrepreneurship Certificate and Engineering Management Certificate: http://emp.colorado.edu/current/ceas_grads.htm. Students take courses in engineering management, finance and marketing, culminating in a senior design project which incorporates an entrepreneurship business plan.

International Engineering Certificate: <http://engineering.colorado.edu/academics/international.htm>. This certificate is available in Chinese, French, German, Italian, Japanese and Spanish and includes an international corporate or university co-op.

In addition, an **Undergraduate Energy Certificate** is available through the Renewable and Sustainable Energy Institute: <http://rasei.colorado.edu/>. The certificate requires 18 credits, most of which can also apply to the EVEN degree.

Other certificate programs are available throughout the CU-Boulder campus, in many different disciplines.



Erik Jorgensen, an EVEN 2005 graduate, working on a solar pond evaporation control system for the U.S. Bureau of Reclamation.

Minors are available in the College of Engineering and Applied Science in: Computer Science, Computer Engineering, Electrical Engineering, Electrical Renewable Energy Systems, and Signals and Systems (http://engineering.colorado.edu/Advising_Guides/Minor_Programs.pdf). Minors are also available through the College of Arts and Sciences (<http://www.colorado.edu/ArtsSciences/students/undergraduate/academics/minors.html>) and the Leeds School of Business (http://leeds.colorado.edu/Academic_Programs/interior.aspx?id=400&terms=minor). Minors typically require 18-33 credits in the discipline, including some specific coursework.

Some minors are particularly compatible with the EVEN BS degree: Applied Math, Chemistry, Ecology and Evolutionary Biology, Electrical Renewable Energy Systems, Geological Sciences and Math. The Program Coordinator can provide more details on how these minors fit with the EVEN degree requirements.

3. Advising

3.1. Advising Process

In the Environmental Engineering Program, each student is assigned a faculty advisor to provide academic counseling and promote greater student-faculty interaction. Students are **required** to participate in the faculty advising process during designated advising weeks just prior to course registration for each semester. An **advising hold** to block registration remains on each student's record until faculty advising has occurred. Faculty advisors are also available during any semester by appointment, for academic and career counseling beyond the required pre-registration meetings.

A few weeks before each advising period, the Program Coordinator will announce to students and faculty advisors by email the advising period schedule and advising procedures. Students are required to read these important advising messages and to follow the instructions for making appointments with faculty advisors or attending group informational and advising sessions. Faculty advisors will give meetings with advisees high priority during this time; please be courteous and meet with your advisor during the designated advising period.

In preparation for the meeting, students should assemble a proposed course plan for the following semester using these *Environmental Engineering (EVEN) Degree Guidelines* and the course schedule for the following semester, which is available through MyCUInfo. After the advising meeting, students must complete an Advising Evaluation Form to provide feedback on the advising process. These forms and the student's academic file, noted and signed by the advisor, must be returned to the Program Coordinator, who will then remove the advising hold to allow the student to register.

Many academic advising questions pertain to the "logistics" of course scheduling and registration. Most of these questions should be directed to the Program Coordinator (see the cover sheet for contact information) instead of the faculty advisors. The Coordinator will provide assistance on procedural questions involving registration, degree plans, graduation requirements, and the petition process. In addition, the Coordinator will help students determine whether a particular situation should be discussed with their faculty advisors.

3.2. Program Contact with Students (Email)

Official notices to students concerning Environmental Engineering Program advising, curriculum, registration, graduation requirements, and policies will be made by e-mail. By default, official notices will be sent to your University e-mail address as listed on the student directory on the web (<http://www.colorado.edu/search/>). If you do not think you are receiving official EVEN e-mail correspondence (you should be receiving messages from the program coordinator or program director at least every couple of weeks, probably more often), please contact the program coordinator to ensure that you are on the e-mail list. To reiterate, the Program is required to notify you only at your CU e-mail address.

The College of Engineering and Applied Science will also send official notices to your CU e-mail address. The college has developed a series of "code words" for the beginning of the subject line to alert you to the content of the message, and the EVEN program tries to use these codes as well:

Career - includes opportunities that will help advance a student's career, e.g. résumé reviews, mock interviewing, meetings with employers, Career Fair, etc.

Job - includes job opportunities for students still in school such as internships, co-ops, and on-campus jobs, as well as information on permanent positions.

Scholarship - includes information on scholarships, grants, other sources of funding, and application deadlines.

Academic Advising or **Advising** - includes advising information, curricular options, registration, academic issues, course information, missing pre-requisites, degree progress, etc.

Graduation - includes information for graduating seniors such as FE exam, senior checkout, recognition ceremonies, senior survey, etc.

Event - includes upcoming meetings, programs, events, trips, and opportunities for volunteers to participate in various functions

Extracurricular Opportunity - includes information on student societies, clubs, etc.

Deadline - includes anything with a looming deadline to which you should pay special attention

Urgent - this will be used sparingly and will indicate a critical communication

3.3. Academic Records

An official Environmental Engineering Program academic file will be maintained for each student by the Program Coordinator. This file will contain copies of official documentation related to academic history and progress.

The Environmental Engineering Program Coordinator and faculty advisors will strive to provide you with complete, timely, and accurate academic advising; but ultimately, the responsibility of meeting graduation requirements is yours. Consequently, you should ensure that all copies of relevant paperwork are present in your academic file and that you keep your own copies of critical information.

3.4. Additional Advising Resources

The College of Engineering and Applied Science's advising website (<http://engineering.colorado.edu/students/advising.htm>) contains much useful information, including Advising Guides, policies and forms for specific situations:.

Students may also be referred to various College of Engineering and Applied Science and University of Colorado counselors for certain issues. In particular, several groups within the College offer academic support, including training on study skills and time management, and one-on-one or small group tutoring. These academic programs and other support services are listed on the college web page <http://engineering.colorado.edu/engineering/students/undergraduate.htm>. At the University level, students may consult with the following groups:

- Career Services – provides services for resume and interview skills improvement, internship and job postings, and career fairs (<http://careerservices.colorado.edu>, N352 Center for Community (C4C), 303 492 6541)
- Counseling and Psychological Services: A Multicultural Center -- provides a variety of programs and assistance to address general academic or personal issues. (<https://counseling.colorado.edu/>, S440 C4C, 303 492 6766)
- Student Academic Services Center (<http://www.colorado.edu/sasc/>, 141 Fleming, 303 492 1416)

3.5. Faculty Advisor Assignments

All students in the Environmental Engineering Program will be assigned a faculty advisor. Incoming first-year students will be notified of their advisors before advising weeks begin. Students entering EVEN by change-of-major and transfer students will initially be advised by the Program Director, Jana Milford. At the first advising meeting for change-of-major and transfer students, transfer credits will be evaluated and a course plan to meet graduation requirements may be formulated. After the initial advising sessions, students will be assigned to a regular faculty advisor based on credit hours or option track. Students may also confer with the program coordinator.

4. Academic Policies

Academic policies and guides for the College of Engineering and Applied Science, as well as many forms mentioned in this section, can be found at <http://engineering.colorado.edu/students/advising.htm>.

4.1. Prerequisite and Co-Requisite Courses

Most of the courses in the Environmental Engineering curriculum have prerequisite and/or co-requisite requirements (see tables on pp. 8-9 and the Appendix). The purpose of these requirements is to ensure that you are adequately prepared for subsequent courses.

Students must successfully complete all prerequisite courses before enrolling for a required course in the Environmental Engineering curriculum. Students must also simultaneously enroll in and complete satisfactorily all co-requisite courses. Successful completion means receiving a grade of C- or better. Grades of D+, D, D-, F, IF, IW, P or NC do not satisfy this requirement. Successful completion of prerequisite and co-requisite courses will be monitored for all required courses in the Environmental Engineering curriculum. Students who do not successfully complete prerequisite and co-requisite courses must retake those courses before advancing in the curriculum. If a student registers for a course without satisfactorily completing prerequisite courses, he/she will be notified that the course must be dropped and, if necessary, the student will be dropped from the course. Students required to retake courses are strongly urged to consult their faculty advisors for advice on how successful academic performance can be achieved.

The prerequisite and co-requisite policy applies only to required and option courses in the curriculum. If a student has not satisfied all of the prerequisite and co-requisite requirements for an elective course (technical, humanities & social sciences, or free elective), permission to take that elective course must be obtained from the instructor before enrolling in the course.

Courses not listed in the curriculum may be used to satisfy prerequisite and co-requisite requirements if transfer credit or a petition to the Environmental Engineering Program has been approved. College of Engineering and Applied Science petition forms for this purpose may be obtained from the Program Coordinator or at <http://engineering.colorado.edu/students/advising.htm>.

4.2. Transfer Credit

Five different kinds of students transfer into the Environmental Engineering program:

- students changing majors from the College's Open Option major to EVEN
- students changing majors from another of the College's engineering degrees to EVEN
- students changing majors from another College or School in the University of Colorado at Boulder to EVEN
- students changing majors from another campus of the University of Colorado to EVEN
- students transferring from another institution

For all transfer students, the College of Engineering and Applied Science requires that the last 45 credit hours used to fulfill degree requirements must be CU-Boulder coursework taken after admission to the college. More details about the college's transfer credit policies are available in the Dean's office or online at the following URL on the college website (http://engineering.colorado.edu/engineering/prospective/transfer_students.htm).

4.2.1. Change of Major: From the College's Open Option to EVEN

The EVEN program accepts the College of Engineering and Applied Science Open Option curriculum as a substitute for its own first-year



Susan Bautts, a 2003 EVEN graduate, collects samples of the benthic macroinvertebrate population in an acid mine drainage-affected stream.

curriculum. Grades of C- or better must have been achieved for all courses counting for required courses in the EVEN curriculum. Students changing from Open Option to EVEN must complete a change-of-major form for the college. A description of the college's Open Option is available online on the college website (<http://engineering.colorado.edu/students/advising.htm>).

4.2.2. Change of Major: From a College of Engineering Degree to EVEN

Evaluation of the credit hours earned in another engineering degree curriculum in the College of Engineering and Applied Science for credit in EVEN will be done at the first advising meeting with the EVEN Program Director. Grades of C- or better must have been achieved for all courses counting for required courses in the EVEN curriculum. Because EVEN is a multi-department program, most students coming into EVEN from other engineering degree programs in the College are able to transfer most of their basic courses for credit toward the EVEN BS degree. Students changing from another engineering degree to EVEN must complete a change-of-major form for the College.

4.2.3. Change of Major: From Another UCB College or School to EVEN

Students transferring into EVEN from another of the University of Colorado at Boulder's Colleges and Schools must complete an Intra-University Transfer (IUT) application to the College of Engineering and Applied Sciences (details are available in the Dean's Office or at http://engineering.colorado.edu/engineering/prospective/transfer_cu-boulder.htm). Once the application is approved, credit hours from the non-engineering degree will be evaluated for EVEN credit at the first advising meeting with the EVEN Program Director. Students changing majors to EVEN from non-engineering degrees must complete two semesters of calculus and two semesters of chemistry and/or physics to apply for IUT.

4.2.4. Change of Major: From Another Campus of the University of Colorado System

Students transferring into EVEN from another campus of the University of Colorado system will, in almost all cases, have the same status as transfers from the University of Colorado at Boulder. Students from other CU campuses should refer to the three change-of-major sections above. More details on Intercampus Transfer to the College of Engineering and Applied Science are available in the Dean's Office or online (http://engineering.colorado.edu/engineering/prospective/transfer_other_cu.htm).

4.2.5. Transfer from Another Institution

Students transferring from another university or community college can find information on the College of Engineering and Applied Science website (http://engineering.colorado.edu/engineering/prospective/transfer_students.htm). An initial and official transfer credit evaluation is performed by the CU-Boulder Office of Admissions using the transcript from the previous institution(s). Courses in which the student received a grade lower than a C- will not be accepted by the admissions office.

Once the Office of Admissions has completed its evaluation, the student will meet with the EVEN Director for evaluation of transfer credits for the EVEN curriculum. Note that acceptance of transfer credits by the admissions office does not mean that the transfer credits will count toward the EVEN BS degree; courses taken at another institution must match the course requirements for the EVEN curriculum. In most cases, identification of courses is straightforward; however, for some courses, the EVEN Director may request documentation of course content (catalog descriptions, course syllabi).

4.2.6. Advanced Placement and International Baccalaureate Credit

Advanced Placement (AP) credit may be approved on the basis of College Entrance Examination Board's Advanced Placement tests. International Baccalaureate (IB) credit may be granted to students who have participated in IB diploma or certificate programs. For students who have taken AP or IB courses in high school and who achieve the required score, AP/IB credit will be granted as part of the admission process. AP and IB credits must also be evaluated for credit toward the EVEN curriculum by the EVEN Director or Program Coordinator. If a student later takes a course for which AP or IB credit was granted, the credit for the course taken at the University of Colorado will replace the AP/IB credit.

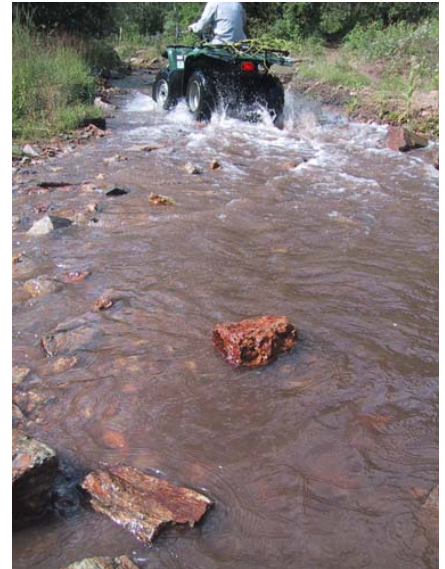
For a listing of CU course equivalents for typical AP and IB credit, see the College of Engineering and Applied Science "Advanced Placement, IB and MAPS" Advising Guide (available in the dean's office or online at <http://engineering.colorado.edu/students/advising.htm>).

College courses taken while in high school (e.g., through the "CU Succeed" Program) will be evaluated as transfer credits according to the applicable section above.

4.2.7. Continuing Education Courses

Courses may be taken for EVEN degree credit through programs offered by the University of Colorado's Division of Continuing Education (see a full description at <http://www.colorado.edu/ContEd/>):

- Summer Session, including Maymester
- Available Credit for Eligible Special Students (ACCESS)
- Center for Advanced Engineering and Technology Education (CAETE)
- Boulder Evening Credit
- Independent Learning
- Concurrent High School



EVEN 2001 graduate Durelle Scott (the headless rider) drives an ATV in a flooded road near a creek to simulate the generation of suspended sediment by off-highway vehicle recreation.

A maximum of 16 credit hours taken through Continuing Education programs other than Summer Session can be applied to the EVEN BS degree (Maymester and Summer Session courses are equivalent to courses offered during the regular academic year). A maximum of 8 of the 16 credit hours can be taken as Humanities and Social Sciences courses. Registration occurs through the mycuinfo portal, but students should be advised that a separate tuition charge may apply.

4.3. Humanities and Social Sciences Electives

4.3.1. Importance of Humanities and Social Sciences to Environmental Engineers

The purpose of humanities and social sciences (H&SS) electives is to broaden the engineering education. In environmental engineering, appreciation and knowledge of the social, historical, political, and economic context of environmental problems is critically important. The EVEN faculty recommends that you select a sequence of courses that complement and broaden your education in environmental engineering and that you avoid random selection of unrelated introductory courses. See below for some specific courses that may interest environmental engineering students.

4.3.2. Humanities and Social Sciences Requirements

The Environmental Engineering Program follows the College of Engineering and Applied Science H&SS requirements (<http://engineering.colorado.edu/homer/>). A total of 15 credit hours of H&SS electives is required for graduation. At least six of the required credit hours must be at the upper division level (3000- or 4000-level courses). In addition, a communication course is required to improve writing and oral presentation skills. HSS courses must be selected from the College's approved course lists (<http://engineering.colorado.edu/homer/Fall2007.htm>).

Instructor's consent must be obtained on a petition form if prerequisites are not met. Permission must be obtained from the relevant department if courses have other restrictions.

Guidance in the H&SS course selection process is available through the College of Engineering and Applied Sciences (see the online guide HOMER, <http://engineering.colorado.edu/homer/>).

The college provides a searchable database (**Odyssey**) to assist students in selecting H&SS courses:

<http://engineering.colorado.edu/odyssey/>. Students can search by keyword, tag cloud, list browse, or by answering a series of questions designed to determine their interests and needs. Note: not all courses on the approved Homer list or in the Odyssey database are offered every semester; the course schedule must be consulted each semester to determine which courses are available for that semester.

Courses on the approved list that might be of interest to environmental engineers include:

- ANTH 4330 Human ecology: Archaeological Aspects (prerequisite: ANTH 2200)
- ANTH 4600 Human ecology: Cultural Aspects
- ATLS 2000 The meaning of Technology
- ATLS 3519 Building Interactive Technology
- ATOC 4800 Policy Implications of Climate Controversy
- BAKR 1500 Colorado: History, Ecology, and Environment
- BAKR 1600 Creating a Sustainable Future
- ECEN 3070 Edges of Science (prereq., MATH 1020/1070 /2510 or PSYC 3101 or SOCY 2061/4061 or equivalent)
- ECON 3535 Natural Resources Economics (prerequisite: ECON 1000 or 2010, restricted to nonmajors)
- ECON 3545 Environmental Economics (prerequisite: ECON 1000 or 2010, restricted to nonmajors)
- ECON 4999 Economics in Action: Econ/Ethics/Environ (prerequisites: ECON 3070 & 3080, JR or SR standing)
- GEEN 1100 Social Impact of Technology
- GEEN 1510 Self Management and Leadership
- GEEN 3300 Sustainability Ethics and Practice
- GEOG 1982 World Regional Geography
- GEOG 1992 Human Geographies
- GEOG 3402 Natural Hazards
- GEOG 4430 Seminar: Conservation Trends (restricted to junior/senior GEOG/ENVS majors)
- GEOG 4742 Environments and Peoples (recommended prerequisites: GEOG 1982, 1992, 2002 or 2412; restricted to juniors/seniors)
- GEOG 4812 Environment and Development in South America (recommended prerequisites: GEOG 1982, 1992, 2002, 3812,3422, ANTH 3110 or PSCI 3032)
- GEOG 4822 Environment and Development in China (recommended prereqs: GEOG 1982, 1992, 2002 or HIST 1608)
- GEOL 4080 Societal Problems and Earth Sciences (prereq: 1 year calculus, 1 year natural science or equiv, or instructor consent)
- GEOL 4500 Critical Thinking in Earth Sciences (prerequisite: 1000-level science sequence)
- GRMN/HUMN 1701 Nature and Environment in German Literature and Thought
- HIST 4324 History of Modern Science (prerequisite: HIST 1020)
- HIST 4417 Environmental History of North America (prereq: HIST 1015/1025/1035/1045; restricted to soph/juniors/seniors)
- INVS 1000 Responding to Social and Environmental Problems Through Service Learning



Prof. Joe Ryan (third from left) examines waste rock from a mine in St. Kevin Gulch near Leadville with students from the EVEN 4830 Multidisciplinary Approaches to Abandoned Mine Remediation course in spring 2003.

- INVS 4302/PSCI 4732 Critical Thinking in Development (prereq: PSCI 2012/IAFS 1000, ECON 2010-2020, and 1 UD PSCI course)
- MCDB 1030 Plagues, Peoples and Microorganisms
- PHIL 1400 Science and Society
- PHIL/ENVS 3140 Environmental Ethics (prerequisite: PHIL 1100, 1200, 2200, 3100 or 3200, or sophomore standing)
- PHIL 3160 Bioethics (prereq: 6 hours of philosophy course work; restricted to sophomores/juniors/seniors)
- PHIL 3410 History of Science: Ancients to Newton (prereq: 6 hours of philosophy course work; restricted to soph/juniors/seniors)
- PHIL 3430 History of Science: Newton to Einstein (prereq: 6 hours of philosophy course work; restricted to soph/juniors/seniors)
- PHYS 3000 Science and Public Policy (recommended prereq., completion of core science requirement)
- PSCI 3064 Environmental Political Theory (recommended prereq: PSCI 2004)
- PSCI 3206 Environment and Public Policy (prerequisite: PSCI 1101)
- PSCI 4012 Global Development (prereq: PSCI 2012, ECON 2020, IAFS 1000, or one upper-division PSCI course)
- SEWL 2000 America, the Environment, and the Global Economy
- SOCY 2077 Environment and Society
- SOCY 4007 Global Human Ecology
- SOCY/ENVS 4027 Inequality, Democracy and the Environment (restricted to juniors/seniors)
- HUEN or EHON courses, offered by the Herbst Program in the Humanities, and designed especially for engineers. A list of current offerings can be found at <http://engineering.colorado.edu/herbst/>.

Students may petition the College of Engineering and Applied Science for approval of an H&SS course not on the list of previously approved courses. It is strongly suggested that the petition be approved before enrolling in the course. The College encourages meaningful groupings of courses in related subjects and thus may approve courses that are not on the list if they form a coherent plan of study. (Prior approval has already been granted for groups of four courses that would count toward a minor in certain fields, listed at <http://engineering.colorado.edu/homer/Fall2007.htm>.) The following courses may be of interest to environmental engineers and **might be approved** for inclusion in such a grouping (**you must petition for approval!**):

- ANTH 4150 Human Ecology: Biological Aspects (prerequisite: ANTH 2010 and 2020, or EBIO 1210 and 1220)
- ENVS 3003/ETHN 3011 Race, Class, and Pollution Politics (restricted to junior/senior ENVS or ETHN majors)
- ENVS 3020 Advanced Writing in Environmental Studies (restricted to junior/senior ENVS majors)
- ENVS 3621 Energy Policy and Society (recommended prereq: ENVS 3070)
- ENVS 4100 Topics in Environmental Policy
- GEOG 2002 Geographies of Global Change
- GEOG 2412 Environment and Culture
- GEOG 3412 Conservation Practice and Resource Management (restricted to GEOG and ENVS majors)
- GEOG 3422 Conservation Thought
- PHIL 2140 Environmental Justice
- PSCI 4028 Special Topics: Political Theory and Environment
- additional courses from the required and recommended curricula for the Environmental Studies program in the College of Arts and Sciences (<http://envs.colorado.edu>)

The communication/writing requirement may be fulfilled by one of the following courses:

- HUEN 1010 Introduction to the Humanities (restricted to freshmen)
- HUEN 3100 Humanities for Engineers 1 (prerequisite: junior standing & program approval)
- PHYS 3050 Writing in Physics: Problem-Solving and Rhetoric (prereq: PHYS 2130 or 2170 and lower-division core writing requirement)
- WRTG 3030 Writing on Science and Society (restricted to junior/senior engineering/physical and biological science majors)
- WRTG 3035 Technical Communication and Design (restricted to junior/senior majors in engineering, architecture & planning, physical, earth and life sciences)

4.3.3. Some Specific Inclusions and Exclusions for the H&SS List

Some foreign language courses will satisfy the humanities and social science requirements.

Generally, courses in performance and fine arts production, mathematics, and natural sciences are not acceptable as H&SS electives. Some courses in the history of art, music, theatre, dance or film are acceptable. The following courses are specifically excluded from satisfying H&SS requirements:

- courses in painting, sculpture, photography, film and other fine arts production
- courses in musical instruments, band, choir, and other performance courses
- courses in accounting, finance, personnel administration, and other business practices
- critical thinking courses in science departments

These courses may be taken as free electives (up to 3 credits; see section 4.5)



EVEN 2004 graduates Richard Comstock, Ian Crocker, and Robbie Rebel in the CVEN 3454 Water Chemistry laboratory.

4.4. Technical Electives

4.4.1. Overview of Technical Electives

Technical electives provide an opportunity for students to explore a range of engineering, mathematical, and natural sciences topics to provide increased breadth or to focus on a specific technical area to develop in-depth understanding. In addition, one technical elective must be used to meet a requirement for a course in earth sciences. Students should consult their faculty advisors to plan their technical elective program.

4.4.2. Technical Elective Requirements

The EVEN BS curriculum requires nine credit hours of technical electives. Technical elective credit may be met by courses in the following categories:

- most engineering, physics, biology (both EBIO and MCDB), chemistry, geology, physical geography, atmospheric and oceanic sciences, and mathematics (both APPM and MATH) courses that are substantially different from required EVEN courses;
- many courses taught by Computer Science and Engineering Management;
- quantitatively rigorous courses in social sciences (economics, psychology, human geography);
- EVEN senior thesis; and
- independent study courses with appropriate technical content.

Three credit hours of technical electives may be lower division (1000-, 2000-level course). The remaining technical elective courses must be taken at the 3000-level or above. Both undergraduate and graduate courses (5000 level and above) may be taken as technical electives; enrollment in graduate courses requires the consent of the instructor.

One of the technical elective courses (3 credit hours) must be an earth science course at either the lower or upper division level. See the list of recommended earth science courses in the Appendix.

All technical elective course selections should be approved by your advisor.

Technical electives counted toward the graduation requirements for the EVEN BS degree may not be taken pass/fail.

Exceptions to these rules will be considered by petition to the Environmental Engineering faculty.

4.4.3. Specific Inclusions and Exclusions for Technical Electives

A list of selected courses that will meet this requirement appears in the Appendix. If a course is not on this list, check with your advisor or the program coordinator; you may need to petition to have the course approved as a technical elective.

Independent study (see Section 4.6) is accepted as technical elective credit up to a maximum of 6 credit hours.

Co-op credits will not count as technical electives nor toward other degree requirements, except as free elective credits.

A maximum of 3 credit hours of some Reserve Office Training Corps (ROTC) courses may be used as technical electives upon commissioning.

4.4.4. Advice on Technical Electives

Courses that meet the earth sciences requirement are typically found in the Departments of Geological Sciences, Geography, Atmospheric and Oceanic Sciences, and some engineering departments. See the Appendix for a specific list. Some courses (e.g., ATOC 1050, GEOL 1010) have associated optional labs that will satisfy the air or earth science lab or field requirement.

Many students have found that a course devoted to the use of computer software for engineering drawing (e.g., AutoCAD®) or geographic information science (GIS) and mapping (e.g. ARCview®) can open up job opportunities. The following courses are available on the Boulder campus:

- AREN 1027 Engineering Drawing (formerly AREN 1017)
- CVEN 2012 Introduction to Geomatics (prereq APPM 1350)
- GEOG 3053 Cartography: Visualization and Information Design (restricted to junior/senior GEOG/ENVS majors)
- GEOG 4043 Cartography 2: Interactive and Multimedia Mapping (prerequisite: GEOG 3053)
- GEOG 4083 Mapping from Remotely Sensed Imagery (prerequisite: 3093, 4093 or equiv; restr to JR/SR GEOG/ENVS majors)
- GEOG/GEOL 4093 Remote Sensing of the Environment
- GEOG 4103/4203/4303 Geographic Information Science (prerequisite: GEOG 2053 or 3053; restricted to junior/senior GEOG/ENVS majors)
- MCEN 1025 Computer-aided Design and Fabrication

Many students are interested in energy-related courses. Some of these courses can be found in the Appendix. It is also suggested that students check each semester for courses in individual departments' special topics classes for topics of interest.

Instructor's consent must be obtained on a petition form if prerequisites are not met. Permission must be obtained from the relevant department if courses have other restrictions.



EVEN/CHEN 2004 graduate Lily Isenhart perches precariously for a precious water sample from the Snake River in Summit County.

4.5. Free Electives

The EVEN curriculum allows for three credits of free elective(s). College-level CU or transfer credits, upper- or lower division, may be used for these credits to broaden the student's academic experience. Students may also use AP or IB credits, courses from Residential Academic Programs (RAP), President's Leadership Class (PRLC), ROTC, courses required to pursue a minor, etc., as long as they are substantially different from required EVEN courses. Or they may be used to take a "fun" class in something you always wanted to study!

4.6. Air or Earth Science Laboratory or Field Course

Students are required to take one 3-credit course with a significant lab or field component focusing on air quality or earth science. If the course chosen is less than three credits, upper division technical electives must complete the remaining credits. The following courses will fulfill the lab/field requirement:

- ATOC 1070 Weather and the Atmosphere Lab (1) (prereq or co-req: ATOC 1050 or instructor consent)
- CVEN 3708 Geotechnical Engineering 1 (3) (prerequisite: CVEN 3161)
- EVEN 4100 Environmental Sampling and Analysis (3) (prerequisites: CVEN 4404 & 4414 and fluid mechanics or instructor consent)
- GEOG 4411 Methods of Soil Analysis (3) (prerequisites: GEOG 1001 or 1011; prereq/co-req: GEOG 4401)
- GEOL 1030 Introduction to Geology Lab (1) (prior or current registration in 1000-level GEOL recommended)
- GEOL 2700 Introduction to Field Geology (2) (prerequisites: GEOL 1010 & 1020 or GEOL 1060 & 1070 or GEOG 1001 & 1011)
- GEOL 3010 Introduction to Mineralogy (3) (prerequisites: CHEM 1113/CHEM 1211, MATH 1300/APPM 1350)
- GEOL 4716 Environmental Field Geochemistry (2) (prerequisites: GEOL 2700 and chemistry sequence)

4.7. Independent Study

4.7.1. Introduction to Independent Study

An independent study is a collaboration between a student and a faculty member on a special project that provides the student with a learning experience. An independent study may also fill an academic need of importance to the student that cannot be filled by the regular course offerings. Independent studies are opportunities for students to earn credit for learning outside the normal lecture and laboratory class structure.

In the EVEN BS curriculum, independent studies may be counted as technical electives (up to a maximum of six credit hours) or free elective. Independent studies may be conducted in any increment of credit hours up to a maximum of 3 credit hours per semester, with one credit hour representing 25 hours of actual work on the task or project. The Environmental Engineering Program encourages students to consider independent study to engage in a long-term research project with a faculty member.

4.7.2. Independent Study Requirements

The following rules apply to independent studies:

- A maximum of 6 credit hours of independent study may be applied to EVEN BS degree requirements as technical electives.
- Independent studies may not be applied as required courses or option courses.
- A maximum of 3 credit hours of independent study may be taken per semester.
- Independent studies may be supervised by any appropriate University of Colorado faculty member.
- A proposal for an independent study must be made by submitting the Independent Study Agreement Form, complete with student and supervising faculty signatures.
- The EVEN Program Director must approve the proposal.
- A final product of the independent study must be submitted to the Environmental Engineering Program before credit is awarded toward degree requirements.
- Approval of a second independent study is contingent on successful completion of the requirements for the first independent study.
- Independent studies may not be arranged retroactively.
- Independent study credit is not allowed for internship experiences, co-ops, work-study, or work done for pay, following University rules.

4.7.3. Independent Study Procedures

To propose an independent study, students must first determine with a collaborating faculty member the topic, goals, number of credit hours, work plan, and required product for the independent study. This information must be recorded on an Independent Study Agreement Form (see the Forms Appendix) and submitted before the drop/add deadline of the semester in which the independent study will be conducted.

The independent study proposal will be reviewed by the EVEN Director and approved, returned for amendment, or disapproved owing to some deficiency in the proposal. The form must then be submitted to the Program Coordinator. For an EVEN independent study, the Program Coordinator will enroll the student. The student will conduct the independent study under the guidance of the faculty advisor. At the end of the independent study, the student must submit to the Environmental Engineering Program a copy of the final product (a report, a computer code, etc.) in addition to any required products due to the collaborating faculty.



EVEN 2004 graduates Venessa Sanchez and Adam Musulin sample water at the Coors plant in Golden, Colorado.

4.8. Senior Thesis

Students in their final year may choose to do a senior thesis, which is conducted over two terms and demonstrates that a student can complete scientific and engineering research independently and can communicate results. A senior thesis must be supervised and graded by a member of the Environmental Engineering faculty and defended before a committee of three faculty members, two of whom must be affiliated with the Environmental Engineering Program. Senior thesis hours (3 credits each term) may be applied toward the technical elective requirement.

The student is required to complete (in collaboration with the thesis supervisor) and sign a Senior Thesis Proposal form for each semester; the form must then be signed by the student and thesis supervisor and approved by the EVEN Program Director before registration in the courses. The final thesis must be submitted to the Environmental Engineering Program Coordinator by the final day of the second term of the thesis. More details on senior thesis policy and procedures may be found on the Senior Thesis Proposal Forms (see Forms Appendix).

4.9. Engineering Co-op Program

A Co-operative Education Program is available to EVEN students, whereby semesters of academic coursework alternate with semesters of paid engineering work at an engineering firm or university. International co-ops are also available. The co-op program provides professional experience in a real-world situation with university oversight and a chance to explore career options during the undergraduate career. Students enroll in co-op credit hours through the Division of Continuing Education; these credits do not apply toward degree requirements except as free electives. For more information, see <http://engineering.colorado.edu/activelearning/co-op.htm>.

4.10. Petitions

Any exceptions or waivers of the rules and regulations of the Environmental Engineering Program or the College of Engineering and Applied Science must have prior approval by petition. The petition must be completed and submitted to the Environmental Engineering Program for approval; the petition will then be forwarded to the Dean's Office. Exceptions to the humanities/social sciences requirement must also be approved by the Director of the Herbst Program of Humanities for Engineers. It is the student's responsibility to follow up on the petition's progress. Petition forms may be obtained from the Program Coordinator, the dean's office, or from <http://engineering.colorado.edu/students/advising.htm>.

The following list provides some examples of situations for which a petition is required:

- enrolling in less than 12 or more than 19 credit hours per semester
- enrolling in a course when prerequisites have not been satisfied (requires instructor signature)
- substituting for or waiving a required course
- dropping or adding a course after deadlines
- requesting the pass/fail or no credit (NC) grade option for a course
- when more than half of a semester's credit hours do not meet degree requirements
- to ensure that courses taken elsewhere will count toward degree requirements
- to request approval of technical electives or humanities and social sciences classes that are not on the approved lists

Follow these guidelines when completing the petition:

- review the rules and policies of the College of Engineering and Applied Science as published in the *University of Colorado Catalog* and *EVEN Degree Guidelines* during the year of your admission to the College and the current edition(s) of the appropriate Advising Guide(s) to establish your need to petition and the specific rule or policy you wish to waive.
- consult with the Program Coordinator and faculty advisor for clarification of Program rules and policies.
- write or, preferably, type the petition clearly (and neatly!).
- provide complete information in the petition, including the number and title of all courses and pertinent data such as course description syllabi. Additional pages may be attached if necessary.

If properly completed, the petition process will normally take one to two weeks.

4.11. Academic Honesty

The Environmental Engineering Program adheres to the policies of the University of Colorado at Boulder and the College of Engineering and Applied Science on academic honesty, which state:

"As members of the academic community, students have a responsibility to conduct themselves with the highest standards of honesty and integrity. These qualities are also vital to the profession of engineering. Violations of academic ethics tarnish the reputation of all students and will be treated with the utmost seriousness."

Be forewarned and discourage your fellow students from participating in any unethical activities. The following are examples of some, but certainly not all, acts that violate academic ethics:

- plagiarizing
- cheating on assignments and exams (including text messaging during exams, quizzes, etc.)
- possessing or observing of exams or solutions to examinations prior to the exam
- altering, forging, or falsifying official records
- performing work or taking an exam for another student
- providing material/work of your own or of others to a fellow student

The College of Engineering and Applied Science procedures for handling academic ethics violations are available in the Dean's Office and on the college website (http://engineering.colorado.edu/Advising_Guides/Academic_Honesty.pdf). University academic honesty policies are available at the Honor Code website (<http://www.colorado.edu/academics/honorcode/>).

5. Graduation Requirements

5.1. Requirements for EVEN BS Degree

5.1.1. General Requirements

To graduate with a Bachelor of Science degree in Environmental Engineering from the College of Engineering and Applied Science at the Boulder campus, students must meet the following minimum requirements:

1. Satisfactory completion of the required and elective courses in the Environmental Engineering Bachelor of Science curriculum (see Section 2.1). Students must satisfactorily complete a minimum of 128 credit hours, of which the last 45 credit hours shall be CU-Boulder coursework earned after admission to the College of Engineering and Applied Science as a degree student.
2. A minimum CU cumulative grade point average of 2.250 for all courses attempted and for all courses that count toward graduation requirements, excluding "P" grades for courses taken Pass/Fail.
3. A minimum cumulative major grade point average of 2.250. This major grade point average includes only course work in EVEN, CHEN, CVEN and MCEN courses.
4. Successful completion of the Minimum Academic Preparation Standards (MAPS) requirement of the College of Engineering and Applied Science.
5. Submission of copies of independent study or thesis final product(s), if applicable toward degree requirements.
6. Completion of the Fundamentals of Engineering (FE) examination during the final academic year.
7. Notification to the EVEN program coordinator of intent to graduate.
8. Submission of a request for diploma/graduation.

Graduation will be postponed by failure to complete these requirements. Any exceptions to these requirements will require approval of the Environmental Engineering Program Director and the Dean's office by petition. In addition, students must be recommended for graduation by the faculty of the EVEN Program and the faculty of the college, and should complete the senior survey.

To be sure that all requirements are met, students can consult with the Environmental Engineering Program Coordinator, Director, and their faculty advisors. **Students must be aware that meeting graduation requirements is ultimately their own responsibility.**

5.1.2. Grading Policy

Students are evaluated by their performances in the courses that make up the Environmental Engineering curriculum following the standard procedures implemented by the College of Engineering and Applied Science (http://engineering.colorado.edu/Advising_Guides/Grading_Policies.pdf). Student performance is determined by course instructors. Instructors award grades following the University of Colorado standardized grading system (Table 1).

Grade point averages of students are determined only for "quality credit hours." Quality credit hours are those earned in courses taken for standard grades at the University of Colorado. "Earned credit hours" include quality credit hours plus credit hours earned in courses taken pass/fail and credit hours transferred from other institutions; thus, grades in pass/fail courses and courses from other institutions do not count in the University of Colorado grade point average.

Other grades appearing on student transcripts include Incomplete (I), No Credit (NC), and Pass (P). A grade of I indicates that course requirements were not completed owing to documented reasons beyond the control of the student. Grades of I require completion of an "Incomplete Grade Record Form" by the instructor and student stating the work that must be completed to award a final grade. All work required for the final grade must be completed within one year or the I grade is changed to F. A grade of NC indicates that the course taken cannot be used to fulfill graduation requirements and cannot be repeated for a standard grade. A grade of P in a course taken pass/fail indicates that the student achieved the minimum passing grade of D- or better.

5.1.3. Pass/Fail Grading

Pass/fail grading is permitted only for courses used as H&SS electives or for courses above and beyond degree requirements. The primary purpose for offering the opportunity for students to enroll in a course for a grade of P or F instead of a standard letter grade is to encourage students to broaden their educational experience by selecting challenging courses without serious risk to the cumulative grade point average. Students on academic probation may not elect the P/F grade option.

Table 5.1. Standardized grading system of the University of Colorado at Boulder.

letter grade	credit points	quality of performance
A	4.0	superior/excellent
A-	3.7	
B+	3.3	
B	3.0	good/better than average
B-	2.7	
C+	2.3	
C	2.0	competent/average
C-	1.7	(minimum passing grade in prerequisite course)
D+	1.3	
D	1.0	
D-	0.7	(minimum passing grade in non-prerequisite course)
F	0.0	
I		incomplete
NC		no credit
P		pass in a pass/fail course

The College allows a maximum of six pass/fail credit hours per semester. Pass/fail hours counting toward graduation shall not exceed a cumulative total of 16 (Study Abroad pass/fail grades do not count toward this limit). Transfer students are allowed one credit hour pass/fail for every nine credit hours completed under the Standard Grading System.

Students are required to submit a petition requesting approval to register for a course with the pass/fail option.

5.2. Fundamentals of Engineering Exam

One of the requirements for graduation with the EVEN BS degree is that students must take the Fundamentals of Engineering (FE) Exam. This test serves two purposes: (1) it provides students with the opportunity to complete the first step toward Professional Engineer (PE) status and (2) it provides the Environmental Engineering Program with a useful assessment of engineering proficiency attained by EVEN graduates. Students must be within 32 credits of graduation to take the FE exam.

The Fundamentals of Engineering Examination is the first step toward achieving licensure as a Professional Engineer (PE), a particularly important credential for engineers working as consultants. The FE Exam is administered by the National Council of Examiners for Engineering and Surveying (NCEES; <http://www.ncees.org>) and is offered in April and October. Registration notices will be distributed by the EVEN Program Coordinator, and students must coordinate their registrations with the EVEN office.

The exam consists of two parts, the morning and afternoon “specifications.” The morning specification covers engineering, science, and mathematics fundamentals. The afternoon specification is discipline-specific. Environmental engineering is offered as an afternoon specification. Students may also take one of the other specifications, such as chemical, civil or general engineering. The NCEES offers general information, study materials, and sample questions for the FE Exam, and a copy of the current *FE Reference Handbook* can be downloaded from the NCEES website. Numerous review books for the FE Exam are also readily available at web booksellers. Check with the program coordinator about possible review sessions held by engineering departments.

5.3. Requirements for Dual Degrees

Students may choose to pursue a second Bachelor of Science or Bachelor of Arts degree simultaneously with the EVEN BS degree in a College or School at the University of Colorado at Boulder. To do this, they must satisfy the requirements of both degree curricula and may be required to take credit hours beyond the 128 required for the EVEN BS degree. To complete a dual degree, the student should find an academic advisor in the other program to ensure that its course requirements are satisfied.

6. Society of Environmental Engineers (SEVEN)

The Society of Environmental Engineers (SEVEN) is a student society which engages in a combination of educational, service and social activities. It is open to students in all majors who are interested in environmental issues and sustainable solutions. See <http://www.colorado.edu/engineering/EnvEng/SEVEN.htm> for more information about meetings and activities, and to contact the current officers.



Sabre Duren, an EVEN 2002 graduate, measuring stream flow with a pygmy meter for an independent study project.

7. Faculty Directory

More than twenty College of Engineering and Applied Science faculty members are affiliated with the Environmental Engineering Program. These faculty members are rostered in the Aerospace Engineering Sciences, Chemical and Biological Engineering, Civil, Environmental, and Architectural Engineering, and Mechanical Engineering departments.

Angela Bielefeldt, Associate Professor, Civil, Environmental, and Architectural Engineering; former EVEN Director, <http://colorado.edu/ceae/pg.shtml?nid13>
Education: B.S., Iowa State University (1992), M.S., Ph.D., University of Washington (1994, 1996)
Teaching: EVEN 1000 Intro to Environmental Engineering, CVEN 4434 Environmental Engineering Design, CVEN 4474 Hazardous Waste Management
Research: Biological Treatment of Hazardous Organic Compounds, Subsurface Bioremediation, Sustainable water and wastewater treatment for developing communities
Email: angela.bielefeldt@colorado.edu, phone: 303 492 8433, office: ECOT 516

Melvyn Branch, Professor *Emeritus*, Mechanical Engineering, <http://www.colorado.edu/MCEN/people/faculty/branch.html>
Education: B.S., Princeton U. (1966), M.S., Ph.D., University of California at Berkeley (1968, 1971)
Research: Combustion-Generated Air Pollution, Hazardous Waste Destruction, Combustion Chemistry
Email: melvyn.branch@colorado.edu, phone: 303 442-8538; office: ECME 210

William Emery, Professor, Aerospace Engineering Science, http://www.colorado.edu/aerospace/emery_william.html
Education: B.S., Brigham Young U. (1971), Ph.D., U. Hawaii (1975)
Teaching: ASEN 4337 Remote Sensing Data Analysis, ASEN 4215 Oceanography
Research: Satellite Remote Sensing of Oceans, Vegetation and Urban Studies
Email: william.emery@colorado.edu, phone: 303 492 8591, office: ECNT 220

Michael Hannigan, Assistant Professor, Mechanical Engineering, <http://www.colorado.edu/MCEN/people/faculty/hannigan.html>
Education: B.S., Southern Methodist University (1990), M.S., Ph.D., California Institute of Technology (1991, 1997)
Teaching: MCEN 4228 Sustainable Energy, MCEN 3037 Experimental Design and Data Analysis, MCEN 4131 Air Pollution Control
Research: Characterization and Abatement of Air Pollution, Impact of air quality on health, Energy links to air quality
Email: michael.hannigan@colorado.edu, phone: 303 735 5045, office: ECME 218

Daven Henze, Assistant Professor, Mechanical Engineering <http://www.colorado.edu/MCEN/people/faculty/henze.html>
Education: B.S., University of Washington (2001), M.S., Ph.D., California Institute of Technology (2004, 2007)
Teaching: MCEN 4131 Air Pollution Control
Research: Aerosols and Air Quality, Climatology and atmospheric chemistry, Adjoint sensitivity analysis, Data assimilation and remote sensing & modeling tools
Email: daven.henze@colorado.edu, phone: 303 735 5045, office: ECME 265

Mark Hernandez, Professor, Civil, Environmental, and Architectural Engineering, <http://colorado.edu/ceae/pg.shtml?nid29>
Education: B.S., M.S., Ph.D., University of California at Berkeley (1986, 1988, 1994)
Teaching: CVEN 4484 Introduction to Environmental Microbiology, AREN 2110 Thermodynamics, CVEN 4834 Bioaerosols
Research: Biological Waste Treatment Processes, Microbiology of Aerosols, Microbially induced corrosion
Email: mark.hernandez@colorado.edu, phone: 303 492 5991, office: ECOT 515

Jean Hertzberg, Associate Professor, Mechanical Engineering, <http://www.colorado.edu/MCEN/people/faculty/hertzberg.html>
Education: B.S., U. Michigan (1981), M.S., Ph.D., University of California at Berkeley (1983, 1986)
Teaching: MCEN 3012 Thermodynamics, MCEN 3021 Fluid Mechanics, MCEN 4030 Computational Methods, MCEN 4228 Perception of Design
Research: Flow Visualization, Fluids Education, Experimental Vortex Dominated Fluid Dynamics, Applications in Combustion and Biomechanics, Combustion Fluid Mechanics, Hazardous Waste Destruction
Email: jean.hertzberg@colorado.edu, phone: 303 492 5092; office: ECME 220

Karl Linden, Professor, Liebman Faculty Fellow, Civil, Environmental, and Architectural Engineering, <http://colorado.edu/ceae/pg.shtml?nid72>
Education: BS, Science, Agricultural and Biological Engineering, Cornell University, (1989), MS, Civil and Environmental Engineering, University of California (1993), Ph.D., Civil and Environmental Engineering, University of California (1997)
Teaching: CVEN 5834 Water, Sand, Hygiene, CVEN 3414 Fundamentals of Environmental Engineering
Research: Water Treatment, Wastewater Treatment, Disinfection, Advanced Oxidation
Email: karl.linden@colorado.edu, phone: 303 492 4798, office: ECOT 542

Diane McKnight, Professor, Civil, Environmental, and Architectural Engineering, <http://colorado.edu/ceae/pg.shtml?nid35>
Education: B.S., M.S., Ph.D., Massachusetts Institute of Technology (1975, 1978, 1979)
Teaching: CVEN 3434 Applied Ecology, CVEN 5323 Applied Stream Ecology
Research: Aquatic Ecology, Limnology, Reactive transport of metals and organic material in streams and rivers
Email: diane.mcknight@colorado.edu, phone: 303 492 4687 or 492 7573, office: ECOT 543 or RL-1, 118

Jana Milford, Professor, Mechanical Engineering; EVEN Director, <http://www.colorado.edu/MCEN/people/faculty/milford.html>
Education: B.S., Iowa State University (1983), M.S., Ph.D., Carnegie Mellon University (1985, 1988), J.D., University of Colorado School of Law (2004)
Teaching: MCEN 4131 Air Pollution Control, MCEN 3012 Thermodynamics, EVEN 1000 Intro to Environmental Engineering, MCEN 4228 Env. Modeling, MCEN 5228 Env. Law for Engineers
Research: Air Quality Modeling, Atmospheric Chemistry, Air pollution source apportionment, Environmental law and management
Email: jana.milford@colorado.edu, phone: 303 492 5542, office: ECME 214

Shelly Miller, Associate Professor, Mechanical Engineering, <http://www.colorado.edu/MCEN/people/faculty/miller.html>
Education: B.S., Harvey Mudd College (1986), M.S., Ph.D., University of California at Berkeley (1991, 1996)
Teaching: MCEN 4131 Air Pollution Control, MCEN 4141 Indoor Air Pollution, GEEN 1400 Engineering Projects, MCEN 3122 Thermodynamics 2.
Research: Indoor Air Quality, Bioaerosols, Air pollutant control technologies including ultraviolet irradiation and filtration
Email: shelly.miller@colorado.edu, phone: 303 492 0587; office: ECME 222

Lupita Montoya, Assistant Professor, Civil, Environmental, and Architectural Engineering, <http://ceae.colorado.edu/dept/?nid=82>
Education: BS, California State University, Northridge; MS, PhD Stanford University (1999)
Teaching: AREN 2110 Thermodynamics, CVEN 4834/5834 Fundamentals of Air Quality Science and Engineering, GEEN 1400 Engineering Projects
Research: Health effects of aerosols, indoor air quality and exposure, sustainability
Email: lupita.montoya@colorado.edu, phone: 303 492 7137; office: ECOT 514

Roseanna Neupauer, Associate Professor, Civil, Environmental and Architectural Engineering, <http://colorado.edu/ceae/pg.shtml?nid38>
Education: B.S., Carnegie Mellon University (1989); S.M., Massachusetts Institute of Technology (1991); M.S., PhD, New Mexico Tech (1999, 2000)
Teaching: CVEN 4353/5353 Groundwater Engineering; CVEN 3323 Hydraulics
Research: groundwater flow and transport modeling, porous media heterogeneity, contaminant source characterization
Email: Roseanna.Neupauer@colorado.edu; phone: 303 492 6274; office: ECOT 513

John Pellegrino, Research Professor; Mechanical Engineering, <http://www.colorado.edu/MCEN/people/faculty/pellegrino.html>
Education: B.ChE. City College of New York (1973), M.S., Ph.D., (ChE) University of Colorado at Boulder (1979, 1983)
Teaching: Fluid Mechanics, Membranes, Energy, Separations,
Research: Modification, formation, characterization, and performance of membranes, Electrokinetic processes, Water treatment and supply, Biomass-to-fuels process development
Email: john.pellegrino@colorado.edu, phone: 303 735 2631, office: ECST 205

Hari Rajaram, Professor, Civil, Environmental, and Architectural Engineering, <http://colorado.edu/ceae/pg.shtml?nid43>
Education: B.Tech., IIT, Madras (1985), M.S., U. Iowa (1987), Sc.D., M.I.T. (1991)
Teaching: CVEN 4353 Groundwater Engineering; CVEN 3313 Fluid Mechanics, CVEN 5537 Numerical Methods in Civil Engr, GEEN 1500 Intro to Engineering
Research: Groundwater and Contaminant Hydrology, Stochastic Modeling of Transport Processes
Email: harihar.rajaram@colorado.edu, phone: 303 492 6604, office: ECOT 646

Fernando Rosario-Ortiz, Assistant Professor, Civil, Environmental, and Architectural Engineering, <http://colorado.edu/ceae/pg.shtml?nid44>
Education: B.S., University of Puerto Rico, M.S. California Institute of Technology, D.ENV, UCLA,
Teaching: CVEN 4424 Environmental Organic Chemistry
Research: Wastewater reuse, Advanced oxidation processes for water treatment, Natural organic matter
Email: Fernando.Rosario@colorado.edu, phone: 303 492 7607, office: ECOT 512

Joseph Ryan, Professor, Civil, Environmental, and Architectural Engineering; former EVEN Director, <http://colorado.edu/ceae/pg.shtml?nid46>
Education: B.S., Princeton U. (1983), M.S., Ph.D., Massachusetts Institute of Technology (1988, 1992)
Teaching: CVEN 3414 Fundamentals of Environmental Engineering, CVEN 3454 Water Chemistry, CVEN 4424 Environmental Organic Chemistry
Research: Contaminant Fate and Transport in Natural Waters, Surface and Colloid Chemistry, Sources and transport of metals in watersheds affected by acid mine drainage
Email: joseph.ryan@colorado.edu, phone: 303 492 0772, office: ECOT 458

JoAnn Silverstein, Professor, Civil, Environmental, and Architectural Engineering, <http://colorado.edu/ceae/pg.shtml?nid48>
Education: B.S., M.S., Ph.D., University of California at Davis (1978, 1980, 1982)
Teaching: AREN 2110 Thermodynamics; CVEN 4830 Senior Design Projects, CVEN 4833 Residential Water Reuse
Research: Biological Treatment of Contaminants in Water and Wastes, Water Reuse
Email: joann.silverstein@colorado.edu, phone: 303 492 7211, office: ECOT 456

Scott Summers, Professor, Civil, Environmental, and Architectural Engineering, <http://colorado.edu/ceae/pg.shtml?nid52>
Education: B.S., M.S., University of Cincinnati (1980, 1982), Ph.D., Stanford University (1986)
Teaching: CVEN 3424 Water and Wastewater Treatment, CVEN 5834 Env. Engineering Processes
Research: Drinking Water Quality and Treatment, Disinfection By-Products, Natural Organic Matter
Email: r.summers@colorado.edu, phone: 303 492 6644, office: ECOT 540

Wendy Young Instructor, Chemical and Biological Engineering, <http://www.colorado.edu/che/faculty/young.html>
Education: B.S. University of Notre Dame (1996), M.S. University of Colorado (1998), PhD University of Colorado (2002)
Teaching: CHEN 3220 Separations and Mass Transfer
Email: wendy.young@colorado.edu, phone: 303 492 8721, office: ECCH 113

Forms and Appendices

These **forms** can be found on the College of Engineering and Applied Science's Advising website at <http://engineering.colorado.edu/students/advising.htm>:

- Change of Major (including adding additional major or minor)
- Course Schedule Approval (for students on academic probation)
- Incomplete Grade
- Independent Study
- Minor Completion (for engineering minors)
- Petition

In addition to the forms listed above, the following forms may be obtained from the Program Coordinator:

- Advising Evaluation Form
- Degree Requirements Worksheet (see also following pages)
- Senior Thesis Proposal Forms
- Special Action Form
- Special Option Selection Proposal
- Transfer Credit Appeal

These **appendices** are included here in the following pages:

- Technical Elective Suggestions
- Table of prerequisites and co-requisite courses for required courses in the EVEN BS curriculum
- Useful Websites



A settling pond for the treatment of acid mine drainage.

Student Name: _____ Student#: _____

Faculty Advisor: _____ Catalog year: _____ Major year: _____

Required Courses

course no.	course name	credits	course taken (if different)	grade	term
<i>Engineering (53 hours)</i>					
EVEN 1000	Intro to Environmental Engineering	1	_____	_____	_____
GEEN 1300	Intro to Engineering Computing	3	_____	_____	_____
GEEN 1400	Engineering Projects	3	_____	_____	_____
CVEN 3414	Fundamentals of Environmental Engr	3	_____	_____	_____
CHEN 2120	Chem Engr Matl Energy Balances	3	_____	_____	_____
¹	Solid Mechanics	3	_____	_____	_____
CVEN 4404	Water Chemistry	3	_____	_____	_____
CVEN 4414	Water Chemistry Lab	1	_____	_____	_____
²	Engineering Economics	3	_____	_____	_____
³	Fluid Mechanics	3	_____	_____	_____
⁴	Thermodynamics	3	_____	_____	_____
CVEN 4424	Environmental Organic Chemistry	3	_____	_____	_____
⁵	Heat Transfer	3	_____	_____	_____
CVEN 4484	Intro to Environmental Microbiology	3	_____	_____	_____
MCEN 4131	Air Pollution Control	3	_____	_____	_____
⁶	Probability and Statistics	2	_____	_____	_____
CVEN 4333	Engineering Hydrology	3	_____	_____	_____
CVEN 5834	Environmental Engineering Processes	3	_____	_____	_____
CVEN 4434	Environmental Engineering Design	4	_____	_____	_____
			<input type="text"/>	Engineering Total (53)	
<i>Mathematics (16 hours)</i>					
APPM 1350	Calculus 1 for Engineers	4	_____	_____	_____
APPM 1360	Calculus 2 for Engineers	4	_____	_____	_____
APPM 2350	Calculus 3 for Engineers	4	_____	_____	_____
APPM 2360	Intro Diff Eqns w Linear Algebra	4	_____	_____	_____
			<input type="text"/>	Mathematics Total (16)	
<i>Sciences (17 hours)</i>					
CHEN 1211	General Chemistry	3	_____	_____	_____
CHEM 1221	General Chemistry Laboratory	2	_____	_____	_____
PHYS 1110	General Physics 1	4	_____	_____	_____
PHYS 1120	General Physics 2	4	_____	_____	_____
PHYS 1140	Experimental Physics 1	1	_____	_____	_____
CHEM 4521	Physical Chemistry for Engineers	3	_____	_____	_____
			<input type="text"/>	Sciences Total (17)	

¹ Solid Mechanics options: CVEN 2121 Analytical Mechanics, GEEN 3851 Statics for Engrs, MCEN 2023 Statics and Structures.

² Engineering Economics options: EMEN 4100 Business Methods & Economics for Engineers, CVEN 4147 Civil Engineering Systems

³ Fluid Mechanics options: CHEN 3200 Chemical Engineering Fluid Mechanics, CVEN 3313 Fluid Mechanics, GEEN 3853 Fluid Mechanics for Engineers, MCEN 3021/3208 Fluid Mechanics.

⁴ Thermodynamics options: AREN 2110 Thermodynamics, CHEN 3320 Chemical Engineering Thermodynamics, GEEN 3852 Thermodynamics for Engineers, MCEN 3012 or 3208 Thermodynamics.

⁵ Heat Transfer options: CHEN 3210 Chemical Engineering Heat Transfer, MCEN 3022 Heat Transfer.

⁶ Probability & Statistics options: APPM 4570 Statistical Methods, CHEN 3010 Applied Data Analysis, CVEN 3227 Probability, Statistics, & Decision, MCEN 3037 Experimental Design and Data Analysis.

Elective Courses

course no.	course name	credits	course taken	grade	term
Humanities & Social Sciences Electives (18 hours, 6 hours upper division)					
	H&SS (lower or upper division)	_____	_____	_____	_____
	H&SS (lower or upper division)	_____	_____	_____	_____
	H&SS (lower or upper division)	_____	_____	_____	_____
	H&SS (upper division)	_____	_____	_____	_____
	H&SS (upper division)	_____	_____	_____	_____
7	Required Communication Course	_____	_____	_____	_____
	<input type="text"/> H&SS Total (18)				
Option Courses (9 hours)					
8	Option 1	_____	_____	_____	_____
	Option 2	_____	_____	_____	_____
	Option 3	_____	_____	_____	_____
	<input type="text"/> Option Total (9)				
Technical Electives (9 hours, 6 hours upper division, 3 Earth Science)					
9	Tech (lower or upper division)	_____	_____	_____	_____
	Tech (upper division)	_____	_____	_____	_____
	Tech (upper division)	_____	_____	_____	_____
		_____	_____	_____	_____
10	Air/Earth Lab/Field Course	_____	_____	_____	_____
	<input type="text"/> (12)				
	Free Elective (3 hours)	_____	_____	_____	_____
	<input type="text"/> (3)				

Credit hour Total:	<input type="text"/> (128)	Grade Point Average:	<input type="text"/>
MAPS Complete:	<input type="text"/>	Date:	<input type="text"/>
FE Exam:	<input type="text"/>	Date:	<input type="text"/>
Final Check:	<input type="text"/>	Date:	<input type="text"/>

⁷ Communications course: HUEN 1010 Intro to the Humanities, HUEN 3100 Humanities for Engineers, WRTG 3030 Writing on Science and Society, WRTG 3035 Technical Communication and Design, or PHYS 3050 Writing in Physics.

⁸ Consult Environmental Engineering (EVEN) *Degree Guidelines* for lists of Option courses.

⁹ Technical Electives: Three technical elective credits may be lower division (1000-, 2000-level). Three technical elective credits must be in the earth sciences, either lower or upper division (eligible departments and programs include ATOC, CVEN, GEOL, and GEOG). Independent studies or senior thesis may be completed as technical electives for up to 6 credits total, 3 credits per semester.

¹⁰ Air/Earth Lab/Field course: a 3(+) credit course with a significant laboratory or field component focusing on air quality or earth science. If less than 3 credits, the difference is required as an upper division technical elective. Options: ATOC 1070 Weather and the Atmosphere Lab (1), CVEN 3708 Geotechnical Engineering, EVEN 4100 Environmental Sampling, GEOG 4411 Methods of Soil Analysis, GEOL 1030 Intro to Geology Lab, GEOL 2700 Intro to Field Geology (2), GEOL 3010 Intro to Mineralogy, GEOL 4716 Environmental Field Geochemistry (2)

Technical Elective Suggestions

Any of the courses listed in the options (p. 7) are good technical electives. Other example Technical Elective Courses for EVEN are listed below. If a course is not on this list, you may request approval on a petition form. Honors sections of the courses listed below will also be accepted.

Check for prerequisites in the catalog: <http://www.colorado.edu/catalog/catalog10-11>.

Some graduate-level classes (5000+) can also be taken as technical electives -- check with your advisor. Note, however, that prerequisites are not listed in the catalog for graduate courses; instructor's permission may be required.

Courses marked with an asterisk (*) fulfill the earth sciences technical elective requirement (geology, meteorology or soil science). Courses marked with † will fulfill the air/earth sciences lab/field requirement.

Arts & Sciences

APPM 2750 (4) Java: Training and Mathematical Algorithms.
APPM 3010 (3) An Introduction to Nonlinear Systems: Chaos
APPM 3050 (3) Scientific Computing in Matlab
APPM 3170 (3) Discrete Applied Mathematics
APPM 3310 (3) Matrix Methods and Applications
APPM 3570 (3) Applied Probability
APPM 4120 (3) Introduction to Operations Research
APPM 4350 (3) Methods in Appl Math: Fourier Series/Boundary Value Prob
APPM 4360 (3) Methods in Appl Math: Complex Variables & Applications
APPM 4380 (3) Modeling in Applied Mathematics
APPM 4540 (3) Introduction to Time Series
APPM 4560 (3) Markov Processes, Queues, Monte Carlo Sims
APPM 4580 (3) Statistical Applications: Software & Math
APPM 4650 (3) Intermediate Numerical Analysis 1
APPM 4660 (3) Intermediate Numerical Analysis 2
APPM 4720 (3) Open Topics in Applied Mathematics

ASTR/ASEN 2500 Gateway to Space
ASTR/GEOL 3300 (3) Extraterrestrial Life

ASTR/ATOC 3720 (3) Planets and Their Atmospheres

ATOC 1050 (3) Weather and the Atmosphere *
ATOC 1060 (3) Our Changing Environment: El Nino, Ozone and Climate *
ATOC 1070 (1) Weather and the Atmosphere Lab * †
ATOC/GEOL 3070 (3) Introduction to Oceanography *
ATOC 3180 (3) Aviation Meteorology *
ATOC 3300 (3) Analysis of Climate and Weather Observation *

ATOC 3500 (3) Air Chemistry and Pollution
ATOC 3600 (3) Principles of Climate *
ATOC/ASTR 3720 (3) Planets and Their Atmospheres
ATOC/ASEN 4215 (3) Oceanography *
ATOC 4500 (1-3) Special Topics in Atmospheric and Oceanic Sciences
ATOC 4720 (3) Intro to Atmospheric Physics & Dynamics *
ATOC 4750 (3) Desert Meteorology and Climate *

CHEM 3311 (4) Organic Chemistry 1
CHEM 3321 (1) Lab in Organic Chemistry 1
CHEM 3331 (4) Organic Chemistry 2
CHEM 3341 (1) Lab in Organic Chemistry 2
CHEM 4011 (3) Modern Inorganic Chemistry
CHEM 4021 (3) Inorganic Laboratory
CHEM 4171 (3) Instrumental Analysis
CHEM 4181 (4) Instrumental Analysis Lab with Environ Emphasis
CHEM 4431 (3) Physical Chemistry w Biochemistry Applications 2
CHEM 4531 (3) Physical Chemistry 2

CHEM 4541 (2) Physical Chemistry Laboratory for Engineers
CHEM 4581 (1) Physical Chemistry Lab 1
CHEM 4591 (2) Physical Chemistry Lab 2
CHEM 4611 (3) Survey of Biochemistry
CHEM 4621 (3) Genome Databases: Mining and Management
CHEM 4711 (3) General Biochemistry 1
CHEM 4731 (3) General Biochemistry 2
CHEM 4751 (3) Current Topics in Biochemical Research
CHEM 4761 (4) Biochemistry Laboratory
CHEM 4791 (3) Bioorganic Chemistry in Biotechnology

EBIO 1030 (3) Biology: A Human Approach 1
EBIO 1040 (3) Biology: A Human Approach 2
EBIO 1050 (1) Biology: A Human Approach Laboratory
EBIO 1210 (3) General Biology 1
EBIO 1220 (3) General Biology 2
EBIO 1230 (1) General Biology Laboratory 1
EBIO 1240 (1) General Biology Laboratory 2
EBIO 1300 (1-3) Topics in Biological Sciences
EBIO 2010 (1-3) Environmental Issues and Biology
EBIO 2040 (4) Principles of Ecology
EBIO 2070 (4) Genetics: Molecules to Populations
EBIO 2500 (4) Introduction to Horticulture
EBIO 2590 (2) Plants and Society
EBIO 3010 (1-2) Teaching Biology
EBIO 3040 (4) Conservation Biology
EBIO 3080 (4) Evolutionary Biology
EBIO 3110 (3) Population and Community Ecology
EBIO 3170 (3-4) Arctic and Alpine Ecology
EBIO 3175 (1) Arctic and Alpine Ecology Lab
EBIO 3180 (3) Global Ecology
EBIO 3190 (3) Tropical Marine Ecology
EBIO 3240 (4) Animal Behavior
EBIO 3270 (3) Ecosystem Ecology
EBIO 3470 (3) History of Biology
EBIO 3520 (4) Plant Systematics
EBIO 3530 (4) Functional Plant Biology
EBIO 3630 (4) Parasitology

EBIO 3770 (4) Animal Diversity: Vertebrates
EBIO 3850 (4) Animal Diversity: Invertebrates
EBIO 4020 (3) Stream Biology
EBIO 4030 (3) Limnology
EBIO 4060 (3) Landscape Ecology
EBIO 4090 (2) Coral Reef Ecology
EBIO 4100 (3) Advanced Ecology
EBIO 4110 (3) Advanced Ecology
EBIO 4120 (2-4) Advanced Ecology
EBIO 4140 (3) Plant Ecology
EBIO 4150 (1-2) Techniques in Ecology
EBIO 4160 (3) Introduction to Biogeochemistry
EBIO 4175 (3) Scientific Basis for Ecosystem Management Public Lands
EBIO 4180 (3) Ecological Perspectives on Global Change
EBIO 4290 (3) Molecular Systematics and Evolution
EBIO 4350 (1-4) Biological Field Studies
EBIO 4410 (4) Biometry
EBIO 4500 (4) Plant Biodiversity and Evolution
EBIO 4510 (4) Plant Anatomy and Development
EBIO 4570 (3) Advanced Plant Physiology
EBIO 4630 (2-6) Field Techniques in Environmental Science
EBIO 4640 (2-4) Plant Field Studies
EBIO 4660 (4) Insect Biology
EBIO 4740 (3) Biology of Amphibians and Reptiles
EBIO 4750 (4) Ornithology
EBIO 4760 (4) Mammalogy

ENVS 1000 (4) Introduction to Environmental Studies
ENVS 3001 (3) The Campus and the Biosphere
ENVS/EBIO 3040 Conservation Biology
ENVS/PHYS 3070 (3) Energy and the Environment
ENVS/CVEN 3434 Introduction to Applied Ecology

ENVS/GEOL 3520 Environmental Issues in the Geosciences*
ENVS/ATOC 3600/GEOG 3601 Principles of Climate
ENVS 4050 (3) Field Studies in Environmental Sciences
ENVS/GEOL/EBIO 4160 Intro to Biogeochemistry*
ENVS/GEOG 4201 Biometeorology

ENVS 4630 (2-6) Field Techniques in Environmental Science

GEOG 1001 (4) Environ'l Systems 1- Climate & Vegetation *
 GEOG 1011 (4) Environ'l Systems 2 - Landscapes and Water *
 GEOG 2053 (4) Mapping a Changing World
 GEOG 3053 (3) Cartography: Visualization and Information Design
 GEOG 3093 (3) Geographic Interpretation of Aerial Photographs
 GEOG 3251 (3) Mountain Geography *
 GEOG 3301 (3) Analysis of Climate and Weather Observation *
 GEOG 3351 (3) Biogeography
 GEOG 3402 (3) Natural Hazards
 GEOG 3412 (3) Conservation Practice and Resource Management
 GEOG 3511 (4) Introduction to Hydrology
 GEOG 3601 (3) Principles of Climate *
 GEOG 4023 (3) Introduction to Quantitative Methods in Human Geography
 GEOG 4033 (2) Quantitative Methods in Geography Laboratory
 GEOG 4043 (3) Cartography 2: Interactive & Multimedia Mapping
 GEOG 4083 (4) Mapping from Remotely Sensed Imagery
 GEOG 4093 (4) Remote Sensing of the Environment

GEOL 1010 (3) Introduction to Geology 1 *
 GEOL 1020 (3) Introduction to Geology 2 *
 GEOL 1030 (1) Introduction to Geology Laboratory 1 *
 GEOL 1040 (3) Geology of Colorado *
 GEOL 1060 (3) Global Change--an Earth Science Perspective *
 GEOL 2100 (3) Environmental Geology *
 GEOL 2110 (4) Physical Science of the Earth System *
 GEOL 2700 (2) Introduction to Field Geology * †
 GEOL 3010 (3) Introduction to Mineralogy * †
 GEOL 3020 (3) Petrology*
 GEOL 3030 (3) Introduction to Hydrogeology *
 GEOL 3040 (3) Global Change: The Recent Geological Record *
 GEOL 3050 (2) GIS for Geologists *
 GEOL/ATOC 3070 (3) Introduction to Oceanography *
 GEOL 3120 (4) Structural Geology *
 GEOL 3300 (3) Extraterrestrial Life
 GEOL 3320 (3) Introduction to Geochemistry *
 GEOL 3410 (3) Paleobiology *
 GEOL 3430 (4) Sedimentology and Stratigraphy *
 GEOL 3500 (3) Earth Resources and the Environment *
 GEOL 3520 (3) Environmental Issues in Geosciences *
 GEOL 3540 (3) Introduction to Hydrocarbon Geology *

IPHY 2420 (3) Nutrition, Health and Performance
 IPHY 3060 (4) Cell Physiology
 IPHY 3130 (3) Environmental Animal Physiology
 IPHY 3410 (3) Introduction to Human Anatomy
 IPHY 3415 (2) Human Anatomy Laboratory
 IPHY 3430 (3) Introduction to Human Physiology
 IPHY 3435 (2) Human Physiology Laboratory
 IPHY 3450 (5) Comparative Animal Physiology
 IPHY 3460 (5) Comparative Vertebrate Anatomy
 IPHY 3470 (3) Human Physiology 1
 IPHY 3480 (3) Human Physiology 2
 IPHY 3500 (2) Applied Clinical Research
 IPHY 3660 (3) Dynamics of Motor Learning
 IPHY 3730 (3) Brain and Behavior

MATH 2520 (3) Introduction to Biometry
 MATH 3000 (3) Introduction to Abstract Mathematics
 MATH 3110 (3) Introduction to Theory of Numbers
 MATH 3140 (3) Abstract Algebra 1
 MATH 3170 (3) Combinatorics 1
 MATH 3200 (3) Intro to Abstract Mathematics through Topology
 MATH 3210 (3) Euclidean and Non-Euclidean Geometries
 MATH 4000 (3) Foundations of Mathematics
 MATH 4120 (3) Introduction to Operations Research
 MATH 4140 (3) Abstract Algebra 2
 MATH 4230 (3) Geometry of Curves and Surfaces
 MATH 4310 (3) Introduction to Analysis

MCDB 1041 (3) Fundamentals of Human Genetics
 MCDB 1042 (3) Biological Basis of Human Disease
 MCDB 1111 (4) Biofundamentals: Evol, Molec, Cellular Basis of Life
 MCDB 1150 (3) Introduction to Cellular and Molecular Biology
 MCDB 1151 (1) Introduction to Cell and Molecular Biology Lab
 MCDB 2150 (3) Principles of Genetics
 MCDB 2151 (1) Principles of Genetics Laboratory
 MCDB 3100 (3) Methods in Developmental Genetics

GEOG 4103 (4) Introduction to Geographic Information Science
 GEOG/ENVS 4201 (3) Biometeorology *
 GEOG 4203 (4) Geographic Information Science: Modeling Applic
 GEOG 4211 (3) Physical Climatology - Principles *
 GEOG 4231 (4) Physical Climatology/Field Methods *
 GEOG 4241 (4) Principles of Geomorphology *
 GEOG 4251 (4) Fluvial Geomorphology *
 GEOG 4291 (3-4) Mountain Geomorphology *
 GEOG 4303 (4) Geographic Information Science: Programming
 GEOG 4311 (3) Watershed Biogeochemistry
 GEOG 4321 (3-4) Snow Hydrology
 GEOG 4331 (3-4) Mountain Climatology *
 GEOG 4371 (3) Forest Geography: Principles and Dynamics
 GEOG 4401 (3) Soils Geography *
 GEOG 4411 (3) Methods of Soil Analysis * †
 GEOG 4501 (3) Water Resources & Water Management of Western US
 GEOG 4983 (1-3). Field Problems

GEOL 3720 (3) Evolution of Life: The Geological Record *
 GEOL 3950 (3) Natural Catastrophes & Geologic Hazards *
 GEOL 4060 (4) Oceanography
 GEOL 4093 (4) Remote Sensing of the Environment
 GEOL 4130 (3) Principals of Geophysics *
 GEOL 4160 (3) Introduction to Biogeochemistry *
 GEOL 4200 (3) Advanced Mineralogy *
 GEOL 4241 (4) Principles of Geomorphology *
 GEOL 4270 (3) Marine Chemistry and Geochemistry
 GEOL 4291 (3-4) Mountain Geomorphology *
 GEOL 4360 (3) Glacial Geology *
 GEOL 4474 (4) Vertebrate Paleontology
 GEOL 4550 (3) Petroleum Reservoir Characterization & Modeling
 GEOL 4640 (3) Glaciology *
 GEOL 4670 (3) Isotope Geology *
 GEOL 4711 (2) Igneous and Metamorphic Field Geology *
 GEOL 4712 (2) Structural Field Geology *
 GEOL 4714 (2) Field Geophysics *
 GEOL 4715 (2) Field Tech in Surficial Geol & Geohydrol *
 GEOL 4716 (2) Environmental Field Geochemistry * †
 GEOL 4717 (2) Field Seminar in Geology and Tectonics *

IPHY 3800 (3) Forensic Biology
 IPHY 3810 (1) Forensic Biology Laboratory
 IPHY 4200 (3) Physiological Genetics and Genomics
 IPHY 4440 (3) Endocrinology
 IPHY 4470 (3) Biology of Human Reproduction
 IPHY 4480 (3) Comparative Reproduction
 IPHY 4500 (4) Histology: Cells and Tissues
 IPHY 4540 (5) Biomechanics
 IPHY 4600 (4) Immunology
 IPHY 4650 (5) Exercise Physiology
 IPHY 4720 (4) Neurophysiology
 IPHY 4730 (3) Motor Control
 IPHY 4740 (3) Theory of Motor Skills Learning
 IPHY 4770 (3-4) Mind-Body Health

MATH 4320 (3) Multivariable Analysis
 MATH 4330 (3) Fourier Analysis
 MATH 4440 (3) Mathematics of Coding and Cryptography
 MATH 4450 (3) Introduction to Complex Variables
 MATH 4470 (3) Partial Differential Equations 1
 MATH 4510 (3) Introduction to Probability Theory
 MATH 4520 (3) Introduction to Mathematical Statistics
 MATH 4540 (3) Introduction to Time Series
 MATH 4650 (3) Intermediate Numerical Analysis 1
 MATH 4660 (3) Intermediate Numerical Analysis 2
 MATH 4730 (3) Set Theory

MCDB 3120 (3) Cell Biology
 MCDB 3140 (2) Cell Biology Laboratory
 MCDB 3150 (3) Biology of the Cancer Cell
 MCDB 3280 (3) Molecular Cell Physiology
 MCDB 3350 (3) Fertility, Sterility, and Early Mammalian Development
 MCDB 3500 (3) Molecular Biology
 MCDB 3650 (3) The Brain - From Molecules to Behavior
 MCDB 4111 (3) Experimental Design & Research in Cell & Molec Bio

MCDB 4130 (3) Biological Electron Microscopy: Prins/Recent Advances
 MCDB 4140 (3) Plant Molecular Biology and Biotechnology
 MCDB 4300 (3) Immunology
 MCDB 4330 (3) Bacterial Disease Mechanisms
 MCDB 4350 (3) Microbial Diversity and the Biosphere
 MCDB 4410 (3) Human Molecular Genetics
 MCDB 4426 (3) Cell Signaling and Developmental Regulation
 MCDB 4444 (3) Cellular Basis of Disease
 MCDB 4471 (3) Mechanisms of Gene Regulation in Eukaryotes
 MCDB 4520 (3) Bioinformatics and Genomics
 MCDB 4550 (3) Cellular and Molecular Motion, A Biophysical Approach

PHYS 1230 (3) Light and Color for Nonscientists
 PHYS 1240 (3) Sound and Music
 PHYS 1300 (3) Experiment in Physics
 PHYS 2130 (3) General Physics 3
 PHYS 2170 (3) Foundations of Modern Physics
 PHYS 2210 (3) Classical Mechanics and Math Methods 1
 PHYS/ENVS 3070 (3) Energy and the Environment
 PHYS 3210 (3) Classical Mechanics and Mathematical Methods 2
 PHYS 3220 (3) Quantum Mechanics and Atomic Physics 1
 PHYS 3310 (3) Principles of Electricity and Magnetism 1

College of Engineering and Applied Science

AREN 1027 (2) Engineering Drawing (formerly AREN 1017)
 AREN 1027 (2) Descriptive Geometry
 AREN 2050 (3) Engineering Systems for Buildings
 AREN 3010 (3) Mechanical Systems for Buildings
 AREN 3050 (3) Environmental Systems for Buildings 1
 AREN 3060 (3) Environmental Systems for Buildings 2
 AREN 3130 (3) Building Energy Laboratory
 AREN 3140 (3) Illumination Laboratory
 AREN 3406 (3) Introduction to Building Construction
 AREN 3540 (3) Illumination 1
 AREN 4035 (3) Architectural Structures 1
 AREN 4045 (3) Architectural Structures 2

ASEN 2500 (3) Gateway to Space
 ASEN 3111 (4) Aerodynamics
 ASEN 3112 (4) Structures
 ASEN 3116 (3) Introduction to Biomedical Engineering
 ASEN 3128 (4) Aircraft Dynamics
 ASEN 3200 (4) Orbital Mechanics/Attitude Dynamics & Control
 ASEN 3300 (4) Aerospace Electronics and Communications
 ASEN 4010 (3) Introduction to Space Dynamics
 ASEN 4012 (3) Aerospace Materials
 ASEN 4013 (3) Foundations of Propulsion
 ASEN 4090 (3) Global Positioning Systems Applications
 ASEN 4114 (3) Automatic Control Systems
 ASEN 4138 (3) Aircraft Design

CHEN 2810 (3) Biology for Engineers
 CHEN 2820 (3) Foundations of Bioengineering
 CHEN 3130 (2) Chemical Engineering Lab 1
 CHEN 3220 (3) Separations and Mass Transfer
 CHEN 4130 (2) Chemical Engineering Lab 2
 CHEN 4330 (3) Reaction Kinetics
 CHEN 4440 (3) Chemical Engineering Materials
 CHEN 4450 (3) Polymer Chemistry
 CHEN 4460 (3) Polymer Engineering
 CHEN 4520 (3) Chemical Process Synthesis.
 CHEN 4570 (4) Instrumentation and Process Control

CVEN 2012 (3) Introduction to Geomatics
 CVEN 3022 (3) Construction Surveying
 CVEN 3032 (3) Photogrammetry
 CVEN 3111 (3) Analytical Mechanics 2
 CVEN 3161 (3) Mechanics of Materials 1
 CVEN 3246 (3) Introduction to Construction
 CVEN 3256 (3) Construction Equipment and Methods
 CVEN 3323 (3) Hydraulic Engineering
 CVEN 3424 (3) Water and Wastewater Treatment
 CVEN 3434 (3) Introduction to Applied Ecology
 CVEN 3525 (3) Structural Analysis
 CVEN 3602 (3) Transportation Systems
 CVEN 3698 (3) Engineering Geology *
 CVEN 3708 (3) Geotechnical Engineering 1 * †
 CVEN 3718 (3) Geotechnical Engineering 2 *

MCDB 4600 (3) Molecular Approaches to Human Diseases
 MCDB 4615 (3) Biology of Stem Cells
 MCDB 4621 (3) Genome Databases: Mining and Management
 MCDB 4650 (3) Developmental Biology
 MCDB 4660 (2) Developmental Biology Laboratory
 MCDB 4680 (3) Mechanisms of Aging
 MCDB 4750 (3) Animal Virology
 MCDB 4777 (3) Molecular Neurobiology
 MCDB 4790 (3) Experimental Embryology
 MCDB 4810 (3) Insane in the Membrane: Biol/Biophysics of Membrane
 MCDB 4970 (3) Seminar on Physical Methods in Biology

PHYS 3320 (3) Principles of Electricity and Magnetism 2
 PHYS 3330 (2) Electronics for the Physical Sciences
 PHYS 3340 (3) Introductory Research in Optical Physics
 PHYS 4130 (2) Biological Electron Microscopy
 PHYS 4150 (3) Plasma Physics
 PHYS 4230 (3) Thermodynamics and Statistical Mechanics
 PHYS 4340 (3) Introduction to Solid State Physics
 PHYS 4410 (3) Quantum Mechanics and Atomic Physics 2
 PHYS 4510 (3) Optics
 PHYS 4970 (3) Seminar on Physical Methods in Biology

AREN 4110 (3) HVAC Design 1
 AREN 4315 (2) Design of Masonry Structures
 AREN 4416 (3) Construction Costs and Estimating
 AREN 4420 (3) Cost Engineering
 AREN 4466 (3) Construction Planning and Scheduling
 AREN 4540 (3) Exterior Lighting Systems
 AREN 4550 (3) Illumination 2
 AREN 4560 (3) Luminous Radiative Transfer
 AREN 4570 (3) Building Electrical Systems Design 1
 AREN 4580 (3) Daylighting
 AREN 4590 (3) Computer Graphics in Lighting Engineering

ASEN 4148 (3) Spacecraft Design
 ASEN/ATOC 4215 (3) Oceanography *
 ASEN 4216 (3) Neural Signals & Functional Brain Imaging
 ASEN 4218 (3) Large Space Structures Design
 ASEN 4222 (3) Materials Science for Composite Manufacturing
 ASEN 4238 (3) Computer Aided Control System Design
 ASEN 4248 (3) Computer Aided Control System Design 2
 ASEN 4255 (3) Environmental Aerodynamics
 ASEN 4337 (3) Remote Sensing Data Analysis
 ASEN 4338 (3) Computer Analysis of Structures
 ASEN 4426 (3) Neural Systems and Physiological Control
 ASEN 4436 (3) Brains, Minds, Computers

CHEN 4580 (3) Numerical Methods for Proc Simulation
 CHEN 4630 (1) Intellectual Property Law and Engineering
 CHEN 4650 (3) Particle Technology
 CHEN 4670 (3) Environmental Separations
 CHEN 4680 (3) Environmental Process Engineering
 CHEN 4800 (3) Bioprocess Engineering
 CHEN 4801 (3) Pharmaceutical Biotechnology
 CHEN 4805 (3) Biomaterials
 CHEN 4810 (2) Biological Engineering Laboratory
 CHEN 4820 (3) Biochemical Separations
 CHEN 4838 (3) Sp Top: Energy Fundamentals

CVEN 4087 (3) Engineering Contacts
 CVEN 4161 (3) Mechanics of Materials 2
 CVEN 4266 (3) Project Administration
 CVEN 4323 (3) Water Resource Engineering Design
 CVEN 4343 (3) Open Channel Hydraulics
 CVEN 4353 (3) Groundwater Engineering
 CVEN 4474 (3) Hazardous and Industrial Waste Mgmt
 CVEN 4511 (3) Intro Finite Elements
 CVEN 4525 (3) Analysis of Framed Structures
 CVEN 4537 (3) Numerical Methods in Civil Engineering
 CVEN 4545 (3) Steel Design
 CVEN 4555 (3) Reinforced Concrete Design
 CVEN 4565 (2) Timber Design
 CVEN 4718 (3) Mechanics and Dynamics of Glaciers
 CVEN 4728 (3) Foundation Engineering

CVEN 4822 (3) GIS for Civil and Environmental Systems
 CVEN 4838 (3) Sp Top: Sustainable Community Development 1

 CSCI 1220 (4) Virtual Worlds: An Introduction to Computer Science
 CSCI 1240 (3) The Computational World
 CSCI 2270 (4) Computer Science 2: Data Structures
 CSCI 2400 (4) Computer Systems
 CSCI 2824 (3) Discrete Structures
 CSCI 3002 (3) Digital and Social Systems Foundations
 CSCI 3104 (4) Algorithms
 CSCI 3112 (1-3) Digital and Social Systems Professional Development
 CSCI 3155 (4) Principles of Programming Languages
 CSCI 3202 (3) Introduction to Artificial Intelligence
 CSCI 3287 (3) Database and Information Systems
 CSCI 3308 (3) Software Engineering Methods and Tools
 CSCI 3434 (3) Theory of Computation
 CSCI 3656 (3) Principles of Programming Languages
 CSCI 3702 (3) Cognitive Science
 CSCI 3753 (4) Operating Systems
 CSCI 4000 (3) Entrepreneurship in Computing
 CSCI 4113 (3) UNIX System Administration
 CSCI 4123 (4) Network Laboratory
 CSCI 4133 (4) Security Laboratory

 ECEN 1200 (3) Telecommunications 1
 ECEN 1400 (3) Introduction to Digital and Analog Electronics
 ECEN 2060 (3) Sp Top: Renewable Energy
 ECEN 2120 (5) Computers as Components
 ECEN 2250 (5) Circuits/Electronics 1
 ECEN 2260 (5) Circuits/Electronics 2
 ECEN 3010 (3) Circuits and Electronics for Mechanical Engineers
 ECEN 3030 (3) Electrical/Electronic Circuits Non-Major
 ECEN 3070 (3) Edges of Science
 ECEN 3100 (5) Digital Logic
 ECEN 3170 (3) Energy Conservation 1
 ECEN 3250 (5) Circuits/Electronics 3
 ECEN 3300 (5) Linear Systems
 ECEN 3320 (3) Semiconductor Devices
 ECEN 3400 (5) Electromagnetic Fields and Waves
 ECEN 3410 (3) Electromagnetic Waves and transmission
 ECEN 3703 (3) Discrete Mathematics for Computer Engineers
 ECEN 3810 (3) Introduction to Probability Theory
 ECEN 4021 (3) Sp Top: Design Med Device
 ECEN 4106 (3) Photonics
 ECEN 4109 (3) Very Large Scale Integrated System Design
 ECEN 4116 (3) Introduction to Optical Communications
 ECEN 4120 (3) Neural Network Design
 ECEN 4138 (3) Control Systems Analysis
 ECEN 4167 (3) Energy Conservation 2

 EMEN 4030 (3) Project Management System
 EMEN 4050 (3) Leadership
 EMEN 4800 (3) Technology Ventures and Marketing
 EMEN 4825 (3) Entrepreneurial Business Plan Preparation
 EMEN4830 (3) Entrepreneurial Management and Leadership
 EMEN 4875 (3) Entrepreneurial Finance for Engineers

 GEEN 3400 (3) Invention and Innovation
 GEEN 3854 (3) Circuits for Non-majors
 GEEN 3855 (3) Business Systems for Engineers

 MCEN 1025 (3) Computer-Aided Design and Fabrication
 MCEN 1208 (3) Sp Top: Sustainable Energy
 MCEN 2024 (3) Materials Science
 MCEN 2063 (3) Mechanics of Solids
 MCEN 3017 (3) Circuits and Electronics
 MCEN 3025 (3) Component Design
 MCEN 3027 (3) Measurements Lab
 MCEN 3030 (3) Computational Methods
 MCEN 3043 (3) Dynamics
 MCEN 4026 (3) Manufacturing Processes and Systems
 MCEN 4027 (3) Mechanical Engineering Laboratory
 MCEN 4042 (3) Thermal Systems Design
 MCEN 4043 (3) System Dynamics
 MCEN 4115 (3) Mechantronics and Robotics I
 MCEN 4117 (3) Anatomy and Physiology for Engineers
 MCEN 4120 (3) Engineering Statistics
 MCEN 4122 (3) Thermodynamics 2

 CVEN 5020 (3) Building Energy Audits
 CVEN 5393 (3) Water Resources Development & Management

 CSCI 4202 (3) Artificial Intelligence 2
 CSCI 4229 (3) Computer Graphics
 CSCI 4273 (3) Network Systems
 CSCI 4308 (4) Software Engineering Project 1
 CSCI 4312 (3) Medical Informatics
 CSCI 4317 (3) Genome Databases: Mining and Management
 CSCI 4318 (4) Software Engineering Project 2
 CSCI 4342 (3) Groupware and Workflow Systems
 CSCI 4412 (3) Design, Creativity, and New Media
 CSCI 4446 (3) Chaotic Dynamics
 CSCI 4448 (3) Object Oriented Analysis and Design
 CSCI 4473 (3) Network Security
 CSCI 4555 (3) Introduction to Compiler Construction
 CSCI 4576 (4) High Performance Scientific Computing 1
 CSCI 4586 (4) High Performance Scientific Computing 2
 CSCI 4593 (3) Computer Organization
 CSCI 4753 (3) Computer Performance Modeling
 CSCI 4809 (3) Computer Animation
 CSCI 4810 (1) Seminar in Computational Biology/Health Informatics
 CSCI 4838 (3) User Interface Design

 ECEN 4224 (3) High Speed Digital Design
 ECEN 4242 (3) Communication Theory
 ECEN 4345 (3) Introduction to Solid State
 ECEN 4517 (2) Power Electronics Laboratory
 ECEN 4532 (3) Digital Signal Processing Laboratory
 ECEN 4553 (3) Introduction to Compiler Construction
 ECEN 4583 (3) Software System Development
 ECEN 4593 (3) Computer Organization
 ECEN 4606 (3) Undergraduate Optics Laboratory
 ECEN 4613 (3) Embedded System Design
 ECEN 4616 (3) Optoelectric System Design
 ECEN 4623 (3) Real Time Embedded Systems
 ECEN 4632 (3) Introduction to Digital Filtering
 ECEN 4633 (2) Hybrid Embedded System
 ECEN 4634 (2) Microwave and RF Laboratory
 ECEN4638 (2) Control Systems Laboratory
 ECEN 4645 (3) Introduction to Optical Electronics
 ECEN 4652 (2) Communication Laboratory
 ECEN 4696 (2) Optical Circuits Laboratory
 ECEN 4753 (3) Computer Performance Modeling
 ECEN 4797 (3) Introduction to Power Electronics
 ECEN 4811 (3) Neural Signals & Functional Brain Imaging
 ECEN 4821 (3) Neural Systems and Physiological Control
 ECEN 4827 (3) Analog IC Design
 ECEN 4831 (3) Brains, Minds, Computers

 EVEN 2840 (1-3) Independent Study
 EVEN 4100 (3) Environmental Sampling and Analysis * †
 EVEN 4830 (3) Special Topics
 EVEN 4840 (1-3) Independent Study
 EVEN 4980-4990 (6) Senior Thesis

 GEEN3860 (1-3) Special Topics: Journey to Space
 GEEN 4830 (3) Solar Thermal Power

 MCEN 4123 (3) Vibration Analysis
 MCEN 4124 (3) Mechanical Behavior of Materials
 MCEN 4134 (3) Biomechanics
 MCEN 4141 (3) Indoor Air Pollution
 MCEN 4151 (3) Flow Visualization
 MCEN 4152 (3) Introduction to Combustion
 MCEN 4162 (3) Energy Conversion
 MCEN 4173 (3) Finite Element Analysis
 MCEN 4174 (3) Failure of Engineering Materials
 MCEN 4183 (3) Mechanics of Composite Materials
 MCEN 4228 (3) Sp Top: Climate Solutions
 MCEN 4228 (3) Sp Top: Energy Conservation and Storage
 MCEN 4228 (3) Sp Top: Environmental Modeling
 MCEN 4228 (3) Sp Top: Renewable and Sustainable Energy
 MCEN 4228 (3) Sp Top: Wind Energy
 MCEN 4228 (3) Sp Top: Air Measurements

Table of Prerequisites and co-requisites for required courses in the EVEN BS curriculum.

course no.	course name	prerequisites (min. C- unless otherwise noted)	co-requisites
APPM 1350	Calculus 1 for Engineers	2 yrs HS algebra, 1 yr geometry, ½ yr trigonometry	
APPM 1360	Calculus 2 for Engineers	APPM 1350 or MATH 1300	
APPM 2350	Calculus 3 for Engineers	APPM 1360 or MATH 2300	
APPM 2360	Intro Diff Eqns with Linear Algebra	APPM 1360 or MATH 2300	
APPM 4570	Statistical Methods	APPM 1360 or equiv	
AREN 2110	Thermodynamics	PHYS 1110	APPM 1360
ATOC 1070	Weather and the Atmosphere Laboratory	ATOC 1050 or instr consent	ATOC 1050
CHEM 1221	General Chemistry Laboratory	high school chemistry & algebra or CHEM 1001 or 1021	CHEM 1211
CHEM 4521	Physical Chemistry for Engineers	CHEM 1211/CHEM 1221 or CHEM 1113-14 & 1133-34; APPM2350; PHYS 1110; or instr consent	PHYS 1120
CHEM 1211	General Chemistry for Engineers	high school chemistry & algebra or CHEM 1001 or 1021	CHEM 1221
CHEM 2120	Chem Engr Matl Energy Balances	CHEM 1211, GEEN 1300	
CHEM 3010	Applied Data Analysis	GEEN 1300, APPM 2360	
CHEM 3200	Chem Engr Fluid Mechanics	APPM 2350; CHEM 2120 or MCEN 2023	APPM 2360
CHEM 3210	Chem Engr Heat Transfer	CHEM 2120; GEEN 1300; CHEM 3200 or MCEN 3021	
CHEM 3320	Chem Engr Thermodynamics	CHEM 2120; CHEM 4521 or 4511	
CVEN 2121	Analytical Mechanics 1	PHYS 1110	APPM 2350
CVEN 3227	Probability, Statistics & Decisions	JR/SR standing	
CVEN 3313	Theoretical Fluid Mechanics	CVEN 2121 or equiv	
CVEN 3414	Fundamentals of Environmental Engr	CHEM 1211, APPM1360	
CVEN 4404-4414	Water Chemistry	CHEM 1211 or CHEM 1113-14 & -1133-34, CVEN 3414	
CVEN 3708	Geotechnical Engineering	CVEN 3161	
CVEN 4147	Civil Engineering Systems	SR (or JR) standing	
CVEN 4333	Engineering Hydrology	CVEN 3227 (or equiv), CVEN 3323 (or fluid mechanics)	
CVEN 4424	Environmental Organic Chemistry	CHEM1211 or CHEM 1113/1114-1133/1134	
CVEN 4434	Environmental Engineering Design	CVEN 3414, SR standing	
CVEN 5834	Environmental Engineering Processes	APPM 2360; CVEN 3414; fluid mechanics	
CVEN 4484	Intro to Environmental Microbiology	CHEM 1211, CHEM 1221, APPM 2350	
EMEN 4100	Business Methods and Economics for Engr	JR/SR standing	
EVEN 1000	Intro to Environmental Engineering	none	
EVEN 4100	Environmental Sampling and Analysis	CVEN 4404-4414 & 4424 or equiv.	
GEEN 1300	Intro to Engineering Computing	restricted to FR/SO	APPM 1350
GEEN 1400	Engineering Projects	none	
GEEN 3851	Statics for Engineers	PHYS 1110	recom APPM 2350
GEEN 3852	Thermodynamics for Engineers	APPM 2350	
GEEN 3853	Fluid Mechanics for Engineers	APPM 2350 or 2360, GEEN 1300 or CSCI 1300	
GEOG 4411	Methods of Soil Analysis	GEOG 1001 or 1011	GEOG 4401
GEOL 2700	Intro to Field Geology	GEOL 1010-1020, or GEOL 1060-1070 or GEOG 1001-1011	
GEOL 3010	Intro to Mineralogy	CHEM 1111, MATH 1300 (or CHEM 1211, APPM 1350)	
GEOL 4716	Environmental Field Geochemistry	GEOL 2700, chemistry sequence	
MCEN 2023	Statics and Structures	APPM 1360	
MCEN 3012	Thermodynamics	APPM 2350	
MCEN 3021	Fluid Mechanics	APPM 2360, Solid Mechanics	
MCEN 3022	Heat Transfer	MCEN 3012 & 3021 (or equiv.)	
MCEN 4131	Air Pollution Control	fluid mechanics	
PHYS 1110	General Physics 1	none	APPM 1350
PHYS 1120	General Physics 2	PHYS 1110	APPM 1360
PHYS 1140	Experimental Physics 1	PHYS 1110	PHYS 1120

*or by instructor's consent as arranged by the Environmental Engineering Program

For prerequisites for option courses, see p. 7.

Useful Websites

Environmental Engineering Program: <http://www.colorado.edu/engineering/even/>

College of Engineering and Applied Science: <http://engineering.colorado.edu/>

Academic Support Programs: <http://engineering.colorado.edu/academics/support.htm>

Active Learning Program: <http://engineering.colorado.edu/activelearning/index.htm>

Co-op Program: <http://engineering.colorado.edu/activelearning/co-op.htm>

Discovery Learning (includes Discovery Learning Apprenticeship Program, Undergraduate Research Opportunities Program (UROP), Bioscience Undergraduate Research Skills and Training (BURST), Research Experience for Undergraduate (REU)): <http://engineering.colorado.edu/activelearning/aboutdiscovery.htm>

Service Learning (includes Earn-Learn Apprenticeship Program, Engineering for Developing Communities, Engineers Without Borders, etc): <http://engineering.colorado.edu/activelearning/service.htm>

Professional Learning (includes internships and co-ops): <http://engineering.colorado.edu/activelearning/professional.htm>

Advising Guides (College): <http://engineering.colorado.edu/students/advising.htm>

BOLD Center, Academic Support: <http://engineering.colorado.edu/bold/>

Career Services: <http://careerservices.colorado.edu>

Catalog, University of Colorado at Boulder: <http://www.colorado.edu/catalog/catalog10-11/>

Engineering Center Maps: <http://www.cs.colorado.edu/department/maps/> or <http://www.cs.colorado.edu/department/maps/ec.html>

Engineering Honors Program: <http://www.cuhonorsengineering.com>

FE Exam: National Council of Examiners for Engineering and Surveying <http://www.ncees.org/>
State of Colorado Board of Licensure: <http://www.dora.state.co.us/aes/index.htm>

Forms (College): Petition form, Change of Major Form, etc.): <http://engineering.colorado.edu/students/advising.htm>

Humanities and Social Sciences Requirements: <http://engineering.colorado.edu/homer/>
Herbst Program: <http://engineering.colorado.edu/herbst/>
Odyssey course search: <http://engineering.colorado.edu/odyssey/>

International Engineering Certificates: <http://engineering.colorado.edu/academics/international.htm>

Minors: <http://www.colorado.edu/ArtsSciences/students/undergraduate/academics/minors.html> and http://engineering.colorado.edu/Advising_Guides/Minor_Programs.pdf

Office of the Registrar: <http://registrar.colorado.edu/>

Schedule of Courses: <http://mycuinfo.colorado.edu>
Course listings in .pdf format at <http://conted.colorado.edu/programs/access/>

Student Society for Environmental Engineering: <http://www.colorado.edu/engineering/EnvEng/SEVEN.htm>

Study Abroad: <http://studyabroad.colorado.edu>

Transfer students, information for: http://engineering.colorado.edu/prospective/transfer_students.htm

Transfer Credits: http://engineering.colorado.edu/prospective/transfer_credits.htm

GTPathways curriculum: <http://highered.colorado.gov/Academics/Transfers/gtPathways/default.html>

Undergraduate Student Services: <http://engineering.colorado.edu/engineering/students/undergraduate.htm>