

The AMBER Outlook Athenaeum

A New Campus Creative Cavity

ENVD 1120 A4 Final

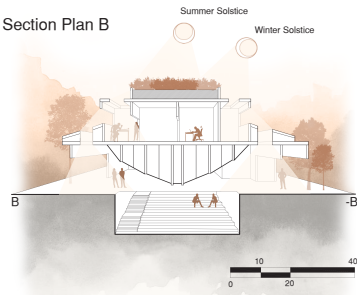
December 9th, 2022

Building Concept

The idea behind the Amber Outlook was to create a safe workspace for students in the Arts and Design Quadrant. This building was intended to be fully functioning at all times of the day and allow a safe illuminated environment for students walking around campus in the evening. The building is split into two functioning spaces across the quadrant. It is a mode of circulation between the art buildings and the CASE building, and it has a small pavilion within the building's inner cavity. This building seems almost ideal for the Quadrant because of its creative flare and intriguing curvature.



Section Plan B

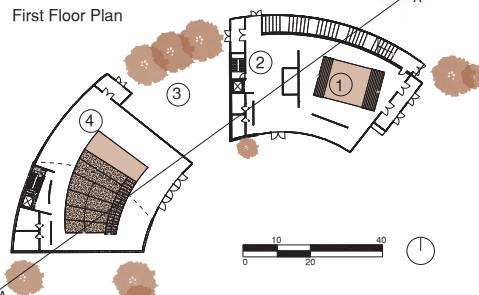


Section Plan C

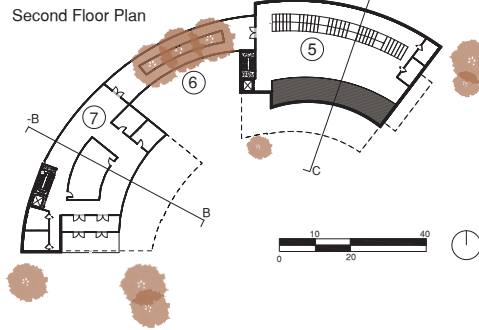


There are multiple skylights and large walls made of sheet glass to let in and out the optimal amount of light. These are functional for both interior artificial lights and exterior solar patterns. The building also uses this light for its internal heating using solar panels and to help grow the roof vegetation.

First Floor Plan



Second Floor Plan



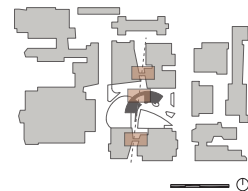
Building Programs:

1. Sunken Gathering Space
2. Cafe & Seating
3. Inner Pavilion
4. Exhibition Space & Sunken Auditorium
5. Library
6. Sky Bridge
7. Conference & Workspace

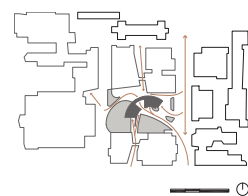
Materiality



Sky Bridge & Building Diagram



Circulation Diagram



Section Plan A



Assembly



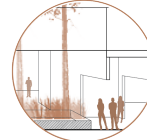
The sunken auditorium is used as a grand assembly space. Used to gather students, display art, and hold major talks.

Gathering



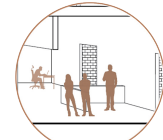
The upper level of the second building is used as a gathering space for designers to coerce and work in groups.

Outside - Inside



This Space is both a procession and a gateway from the indoor to the outdoor environment. The sky bridge is the procession to the separate buildings, while the entrance is a gateway to the outdoor pavilion.

Threshold



This space is the entrance into the first level of the first building it is used as a breakpoint from indoor to outdoor. The area contains a Cafe and Seating.

Rendezvous



This area is used as a gathering space to work individually it could also just be used as entertainment space.

Nelson Atkins Museum of Art



Designer: Steven Holl

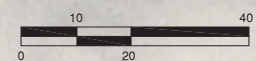
The Use of Light in his design encouraged the Amber Outlook to also have a significance in the area as a source of light. During Colorado winters the Quadrant is quite cold and dark after dusk. The building would be a fully functioning workspace and allow passersby with safe lighting while heading home or to evening classes.

The Glass House



Designer: Philip Johnson

The Use of Transparency in his design inspired the overall design of the Amber Outlook. Each building, including the Sky Bridge, seems to be in a glass encasement, placing the people and the art inside as a display. This seemed to be the perfect president for the Arts and Design Quadrant.



Olivia Hayes

The AMBER Outlook Athenaeum

A New Campus Creative Cavity

ENVD 1120 A4 Final Model

Building View



Joined Building View



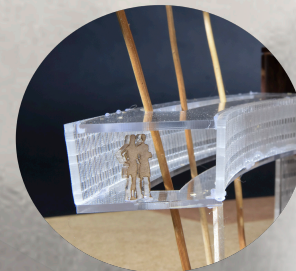
Building Section View



Building Section Detail



Sky Bridge Detail



Olivia Hayes

Olivia Hayes
ENVD 1120 Final
December 9th, 2022

The AMBER Outlook Athenaeum

The Design Goal:

The idea behind the Amber Outlook was to create a safe workspace for students in the Arts and Design Quadrant. This building was intended to be fully functioning at all times of the day and allow a safe illuminated environment for students walking around campus in the evening. The building is split into two functioning spaces across the quadrant. It is a mode of circulation between the art buildings and the CASE building, and it has a small pavilion within the building's inner cavity. This building seems almost ideal for the Quadrant because of its creative flare and intriguing curvature.

Inspiration:

I drew inspiration from both The Glass House, by Philip Johnson, and the Nelson Atkins Museum of Art, by Steven Holl. The Use of Transparency in Johnson's design inspired the overall use of materiality and aesthetic of the building. Each building, including the Sky Bridge, seems to be in a glass encasement, placing the people and the art inside as a display. While the use of light in Holl's design encouraged the building to have significance in the area as a source of light. This was intentional because in the winter season Colorado becomes quite cold and dark after dusk. The building would be a fully functioning workspace and allow passersby with safe lighting while heading home or to evening classes.

Buildings Major Programs:

1. Sunken Gathering Space
2. Cafe & Seating
3. Inner Pavilion
4. Exhibition Space & Sunken Auditorium
5. Library
6. Sky Bridge
7. Conference & Workspace

Conclusion:

While designing this building there were many new techniques and processing tool that had helped develop the overall design and concept of The Amber Outlook. It had displayed both craftsmanship and thoughtfulness towards the building itself and the site it was enhancing. The building was designed to become a functional piece of art which is a seamless way to portray the Arts and Design Quadrant and the creative designers that accompany it.