

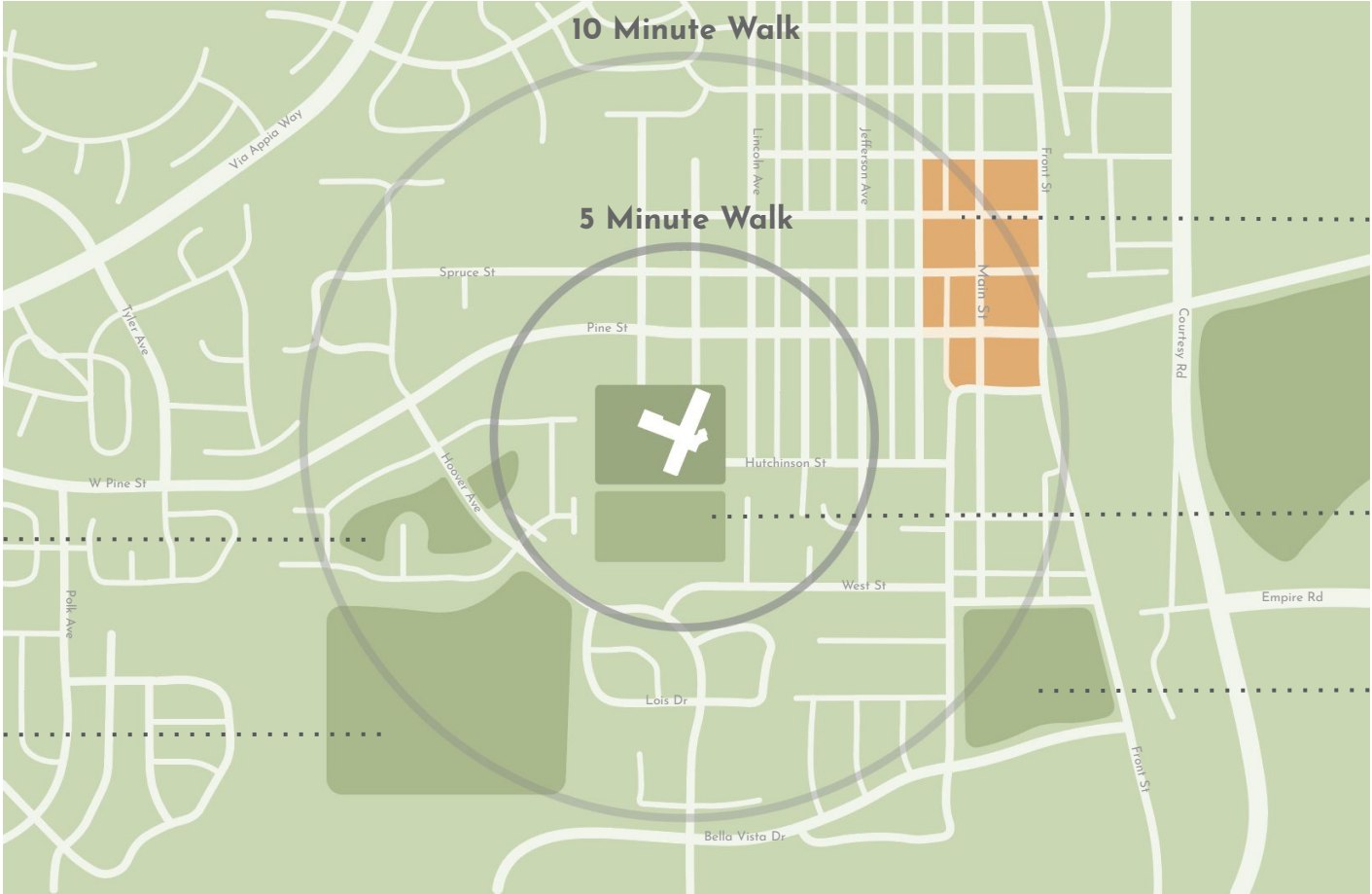


# Louisville Elementary

## Schoolyard Redesign

Allie Vaccaro  
Hairong Li  
Sarah Dolan  
SunHi Moore

# Louisville Elementary School - Louisville, CO



Downtown  
Louisville

Cleo  
Mudrock  
Park

Louisville  
Community  
Park

Sundance  
Park

Open Space

# Design Concept

the four elements:

earth

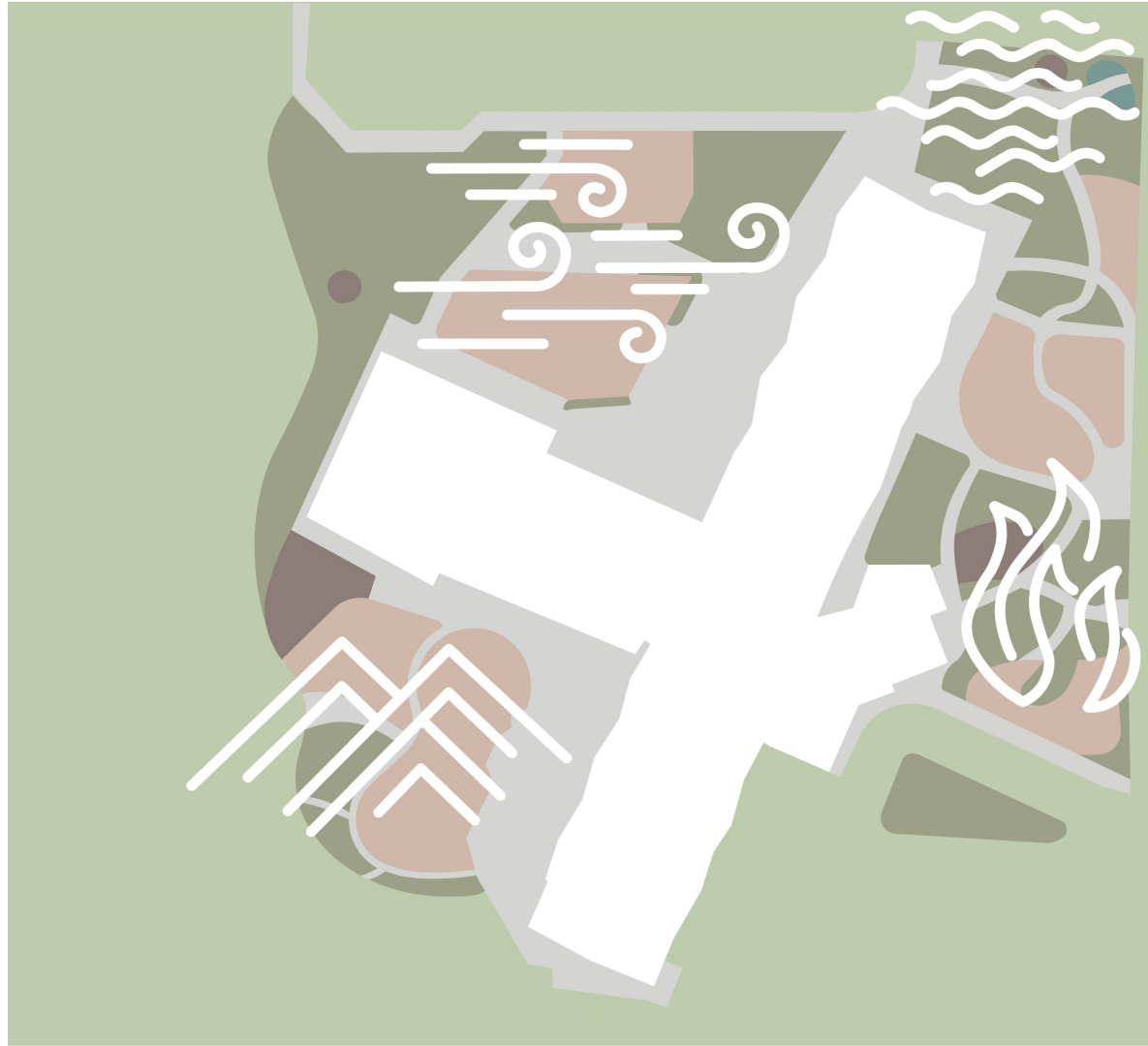
sun

air

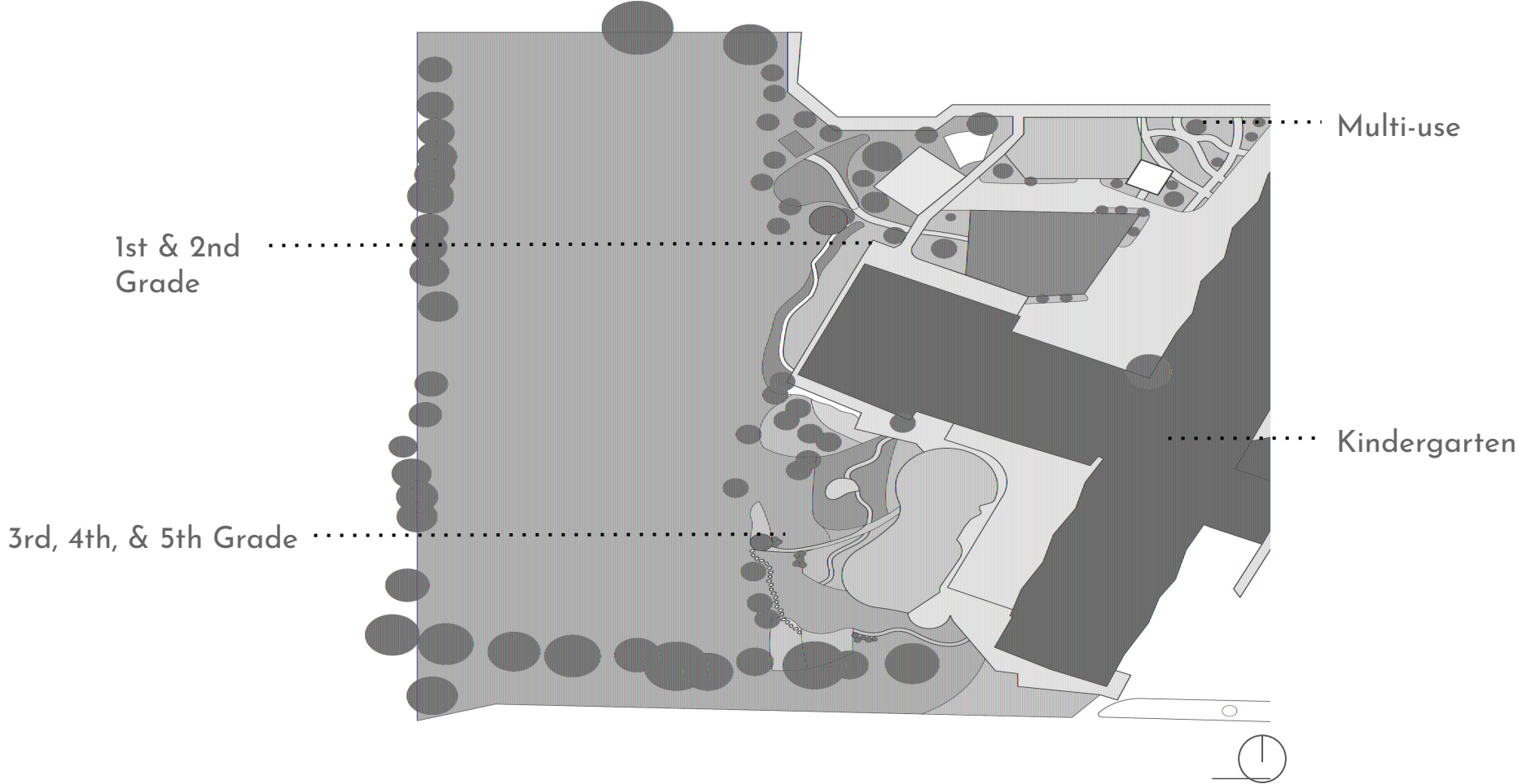
water

derived from the  
school's science  
curriculum

each area of the site is  
designed to reflect one  
element



# Preliminary Master Plan





# Final Master plan

1st & 2nd Grade  
*Wind*

3rd, 4th, &  
5th Grade  
*Earth*

Multi-use  
*Water*

Kindergarten  
*Sun*



50'

150'

250'





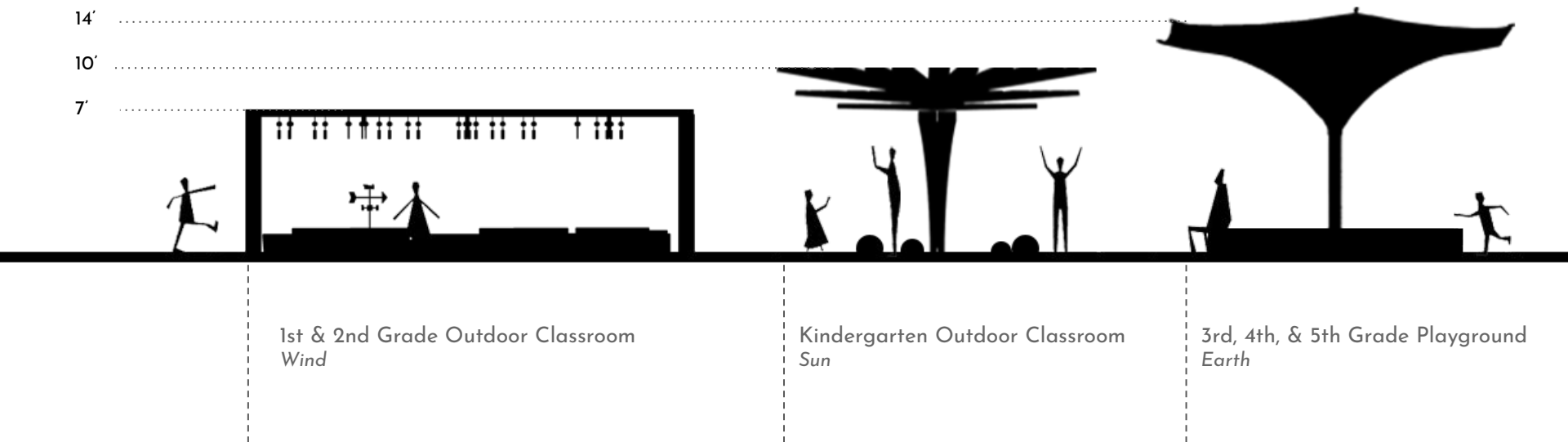
allows for  
longer use of  
the site

shade

makes  
schoolyard more  
comfortable



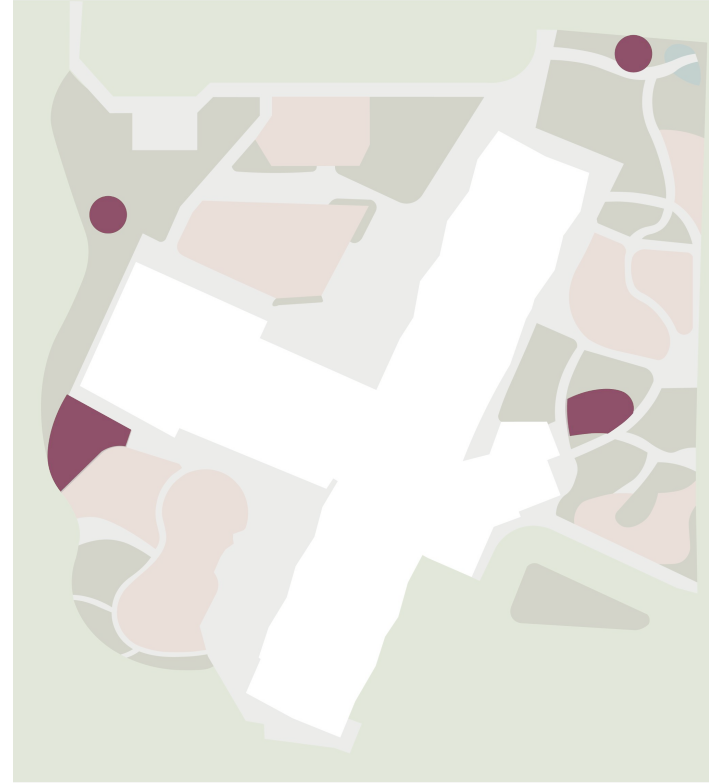
# Shade Structures



# outdoor classrooms

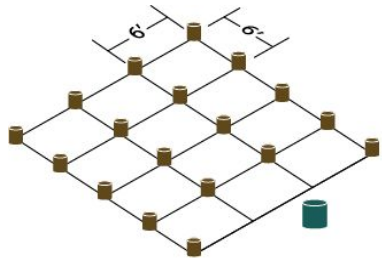
offer unique  
educational  
opportunities

aid in student  
interaction with  
nature



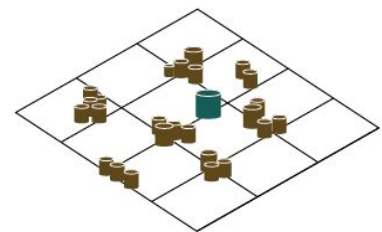
# Outdoor Classroom - Earth

The Earth elements are incorporated to explore principles of geology and ecology.  
Tree log seatings and games



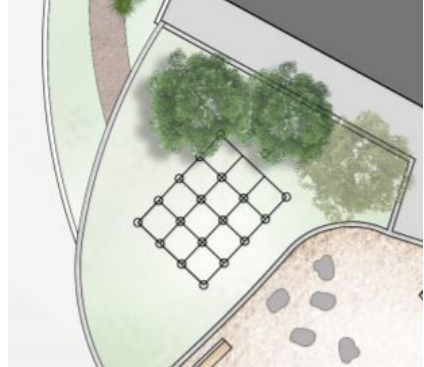
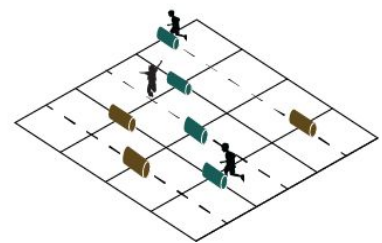
## During Covid

- 6' Social Distancing



## After Covid

- Class in group or individual Unstructual seatings
- Games with tree logs:  
Rolling  
Tic Tac Toe  
Chess



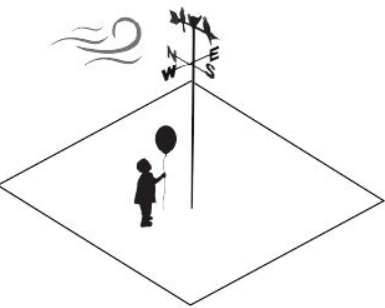
## Perspective



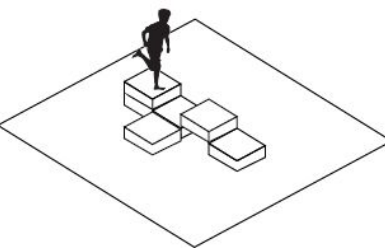


# Outdoor Classroom - Wind

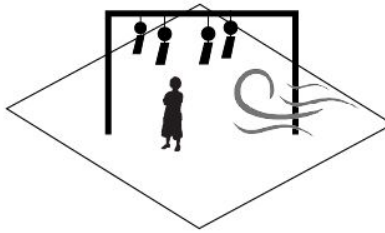
The Air elements are used for weather and climate studies. Measurement devices can be set up to measure the wind and climate changes. Kinetic sculptures can reflect this element and show motion, change, and sound



See wind



Feel wind

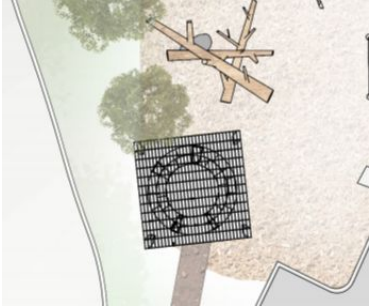


Hear wind

## Element

Motion, Sound, Weather vane, Hanging Art, Wind Chime

## Perspective

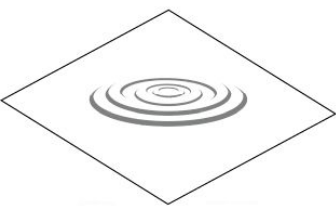


# Outdoor Classroom - Water

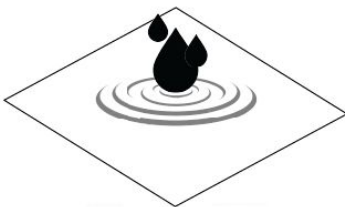
The Water elements are used to show how water behave and changes affect the physical properties of water. Collection and measurement of precipitation can be incorporated into art pieces.

## Element

Precipitation measurement, Water Sculpture, Ripple



Ripple effect Landform



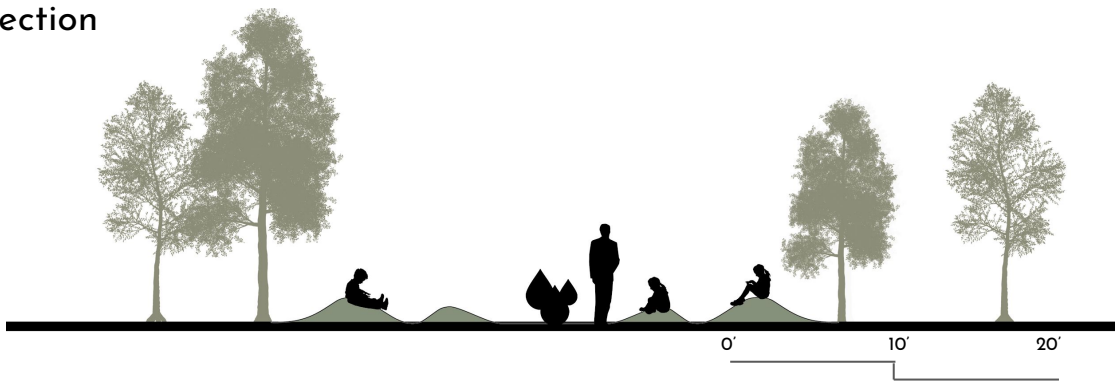
Water sculpture



Collection/Measurement



## Section



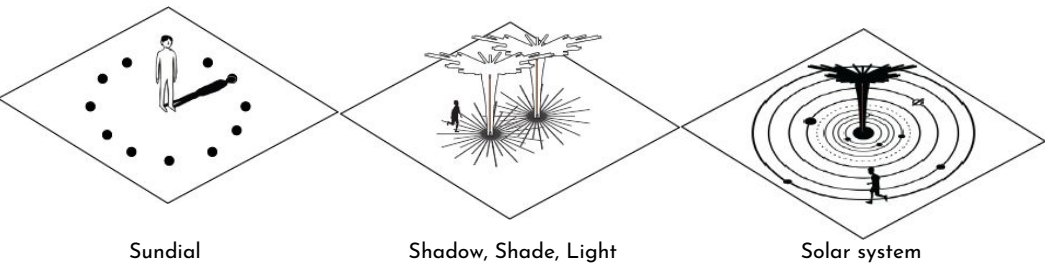


# Outdoor Classroom - Sun

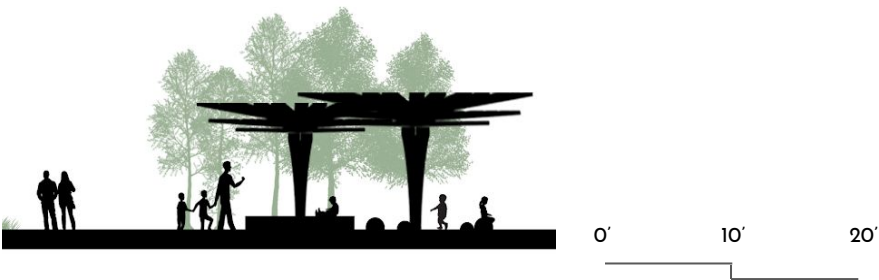
The Sun element are incorporated to observe the characteristics of sunlight, shade, shadow, change in season and time

## Element

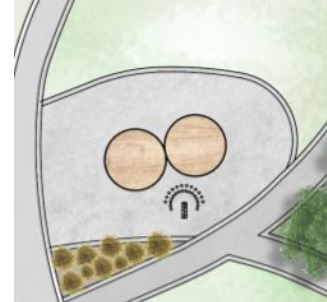
Sundial, Solar system, Shade, Shadow



## Section



## Perspectives





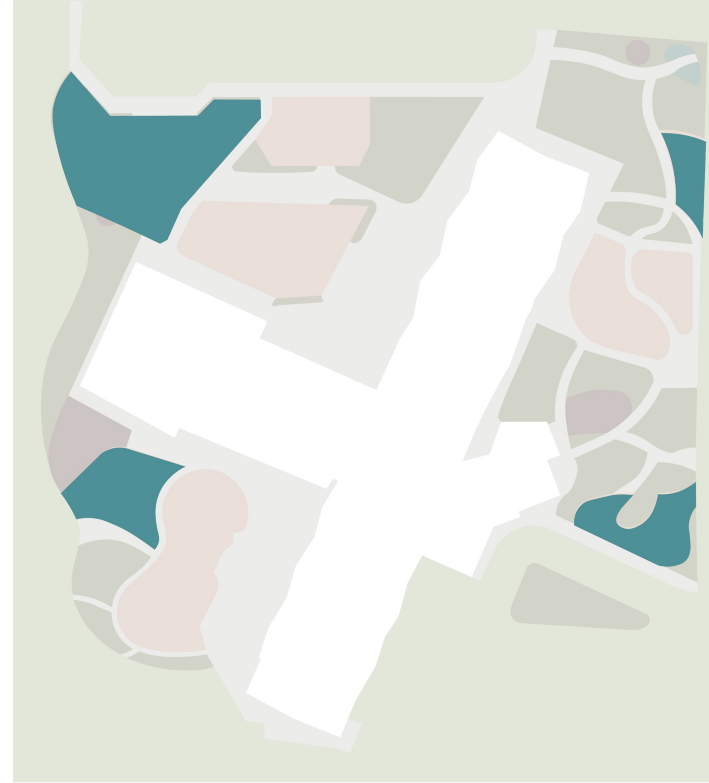


encourages  
imagination

reduces  
stress

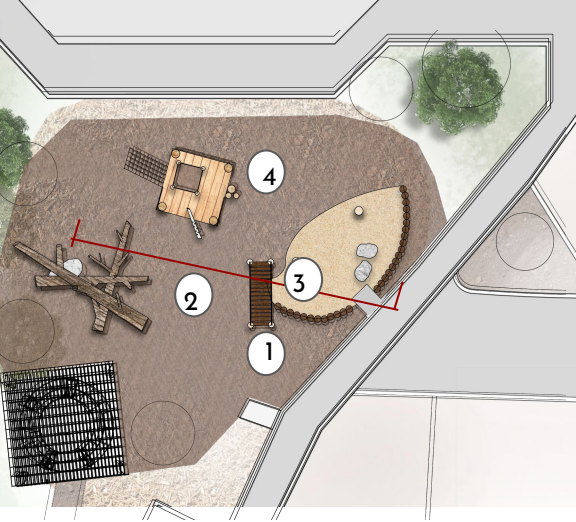
# nature play

aid in student  
interaction with  
nature



# 1st and 2nd Grade Nature Play

Wind- Structures represent movement and balance



1. Swinging Log Bridge
2. Climbing and Balancing Logs
3. Sand Pit
4. Climbing Fort





## 3rd- 5th Nature Play

Earth- experiencing Earth's natural  
Materials through hands on play

1. Hopping Boulders
2. Fort Building Station
3. Play Forts
4. Loose Materials
5. Building Station



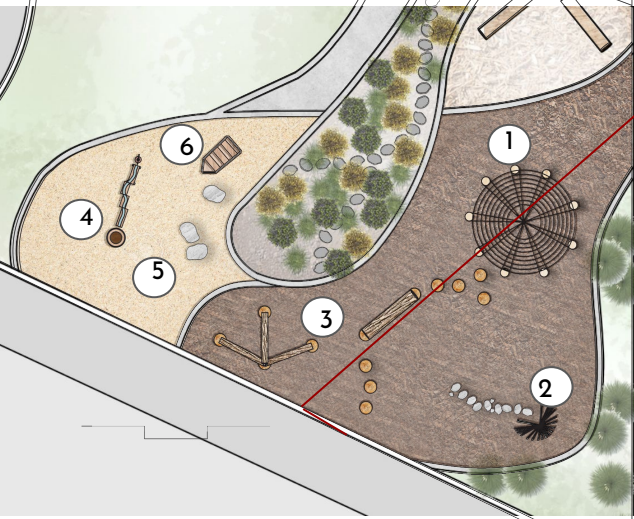




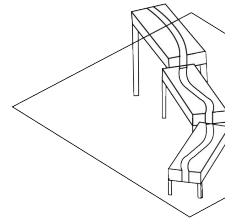


# Kindergarten Nature Play

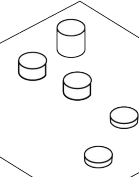
Sun - Play represents the process of the growth of a plant, which relies on the sun



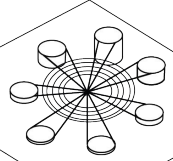
1. Bloom Climbing Web
2. Fort
3. Balancing logs
4. Water Table
5. Sand Pit
6. Mini Boat



Planting the seed



Growth



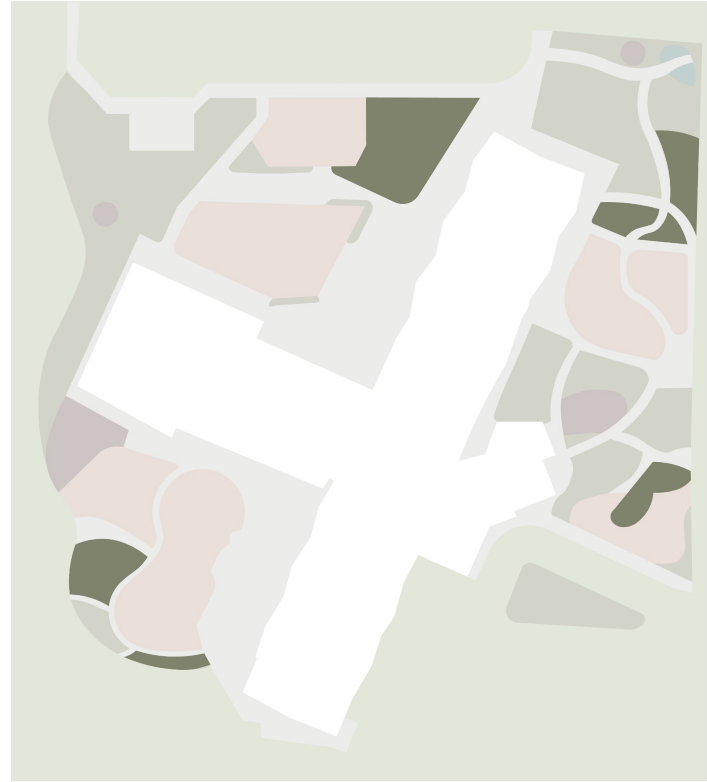
Bloom



educational  
opportunities

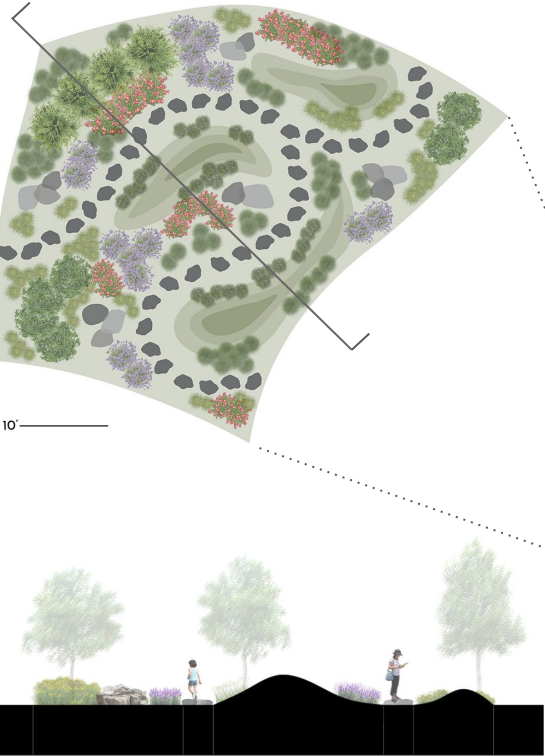
gardens

support local  
ecosystems

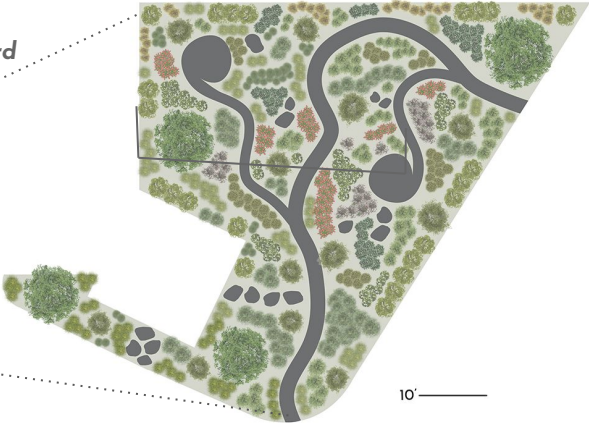
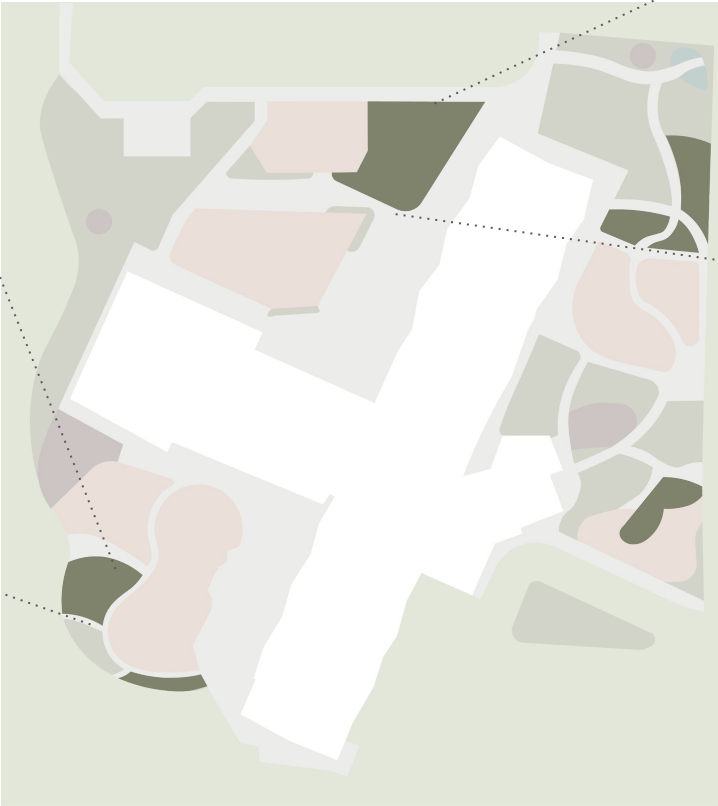




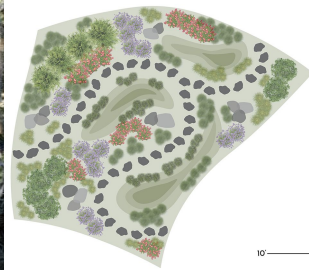
Steppe-Inspired Garden  
3rd, 4th, 5th Schoolyard



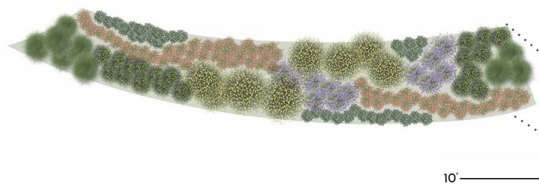
Wind Garden  
1st & 2nd Schoolyard



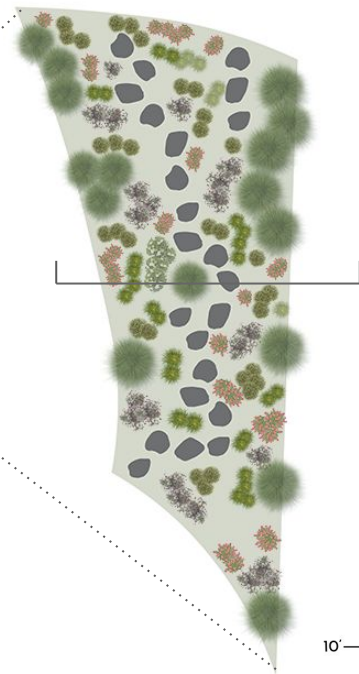




**Pollinator Garden**  
*3rd, 4th, 5th Schoolyard*



**Steppe-Inspired Nature Play Garden**  
*Multi-Use Area*

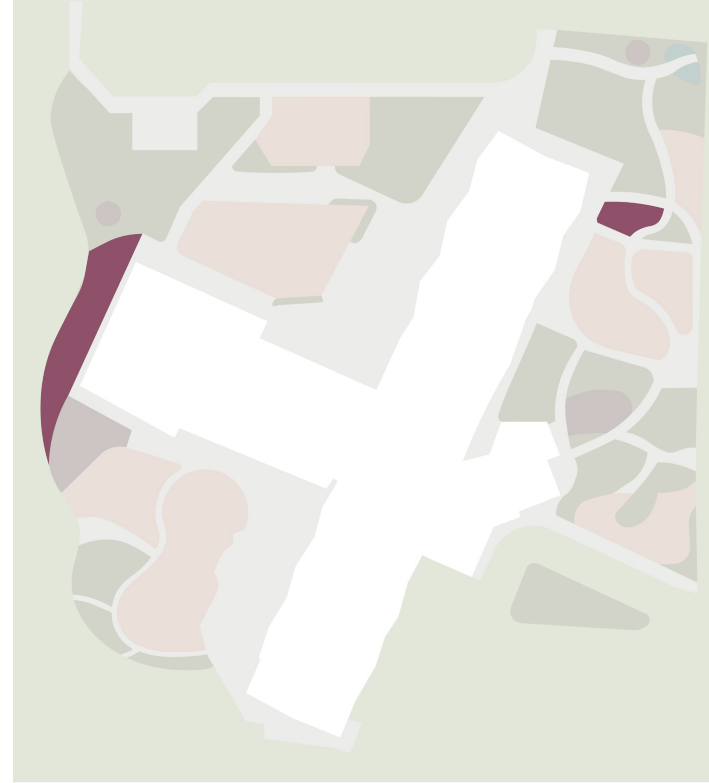




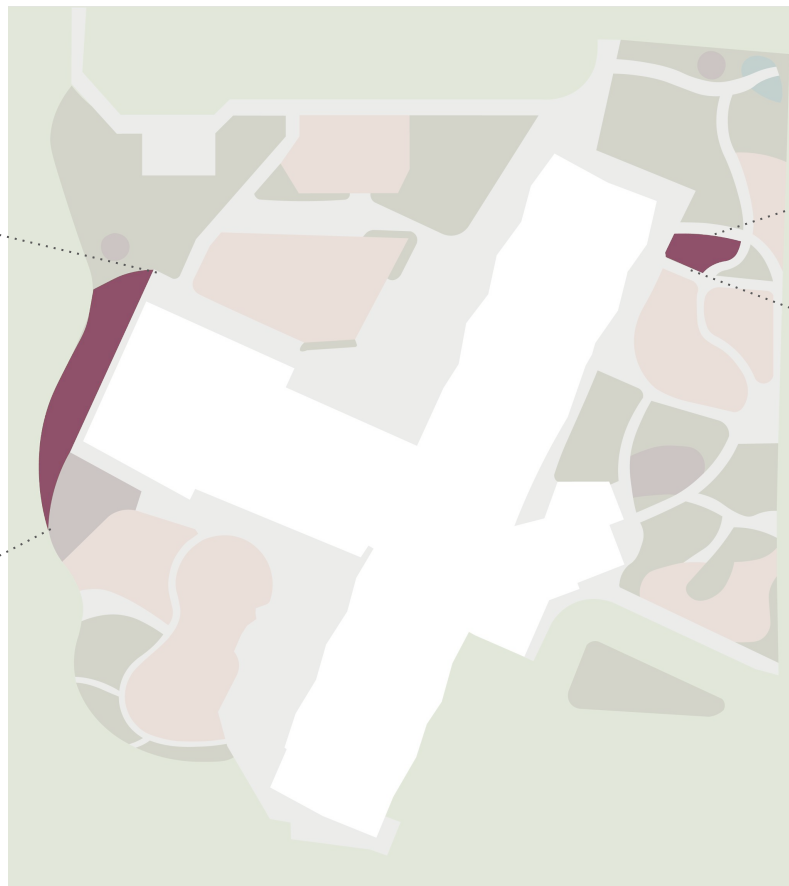
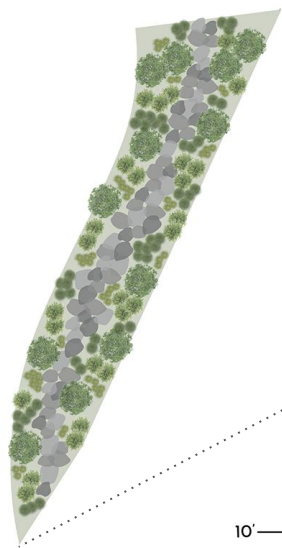
# green infrastructure

mitigates  
flooding on site

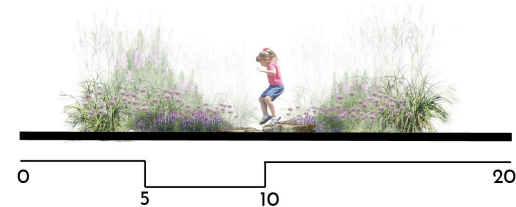
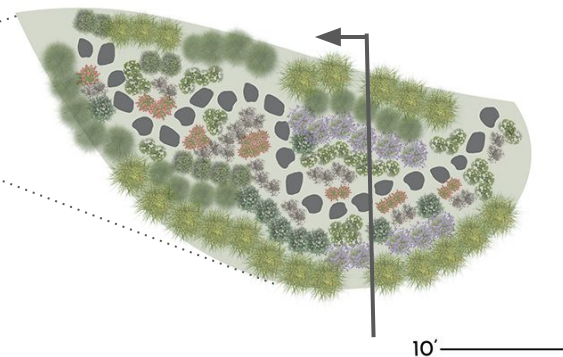
provides  
educational  
opportunities



**Dry Creek Bed**  
*1st & 2nd Schoolyard*



**Rain Garden**  
*Multi-Use Area*



# Funding & Budgeting

GATES FAMILY FOUNDATION



build new areas  
of the schoolyard  
in phases

apply for a  
strategic grant  
through the gates  
family foundation

apply for the  
generation wild  
grant through great  
outdoorscolorado

visit peaceful  
playgrounds for a  
list of schoolyard  
grants



# Perspective



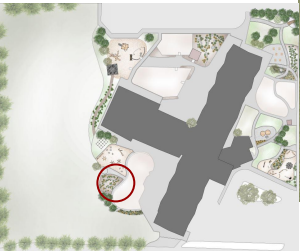


# Perspective





# Perspective





thank you!