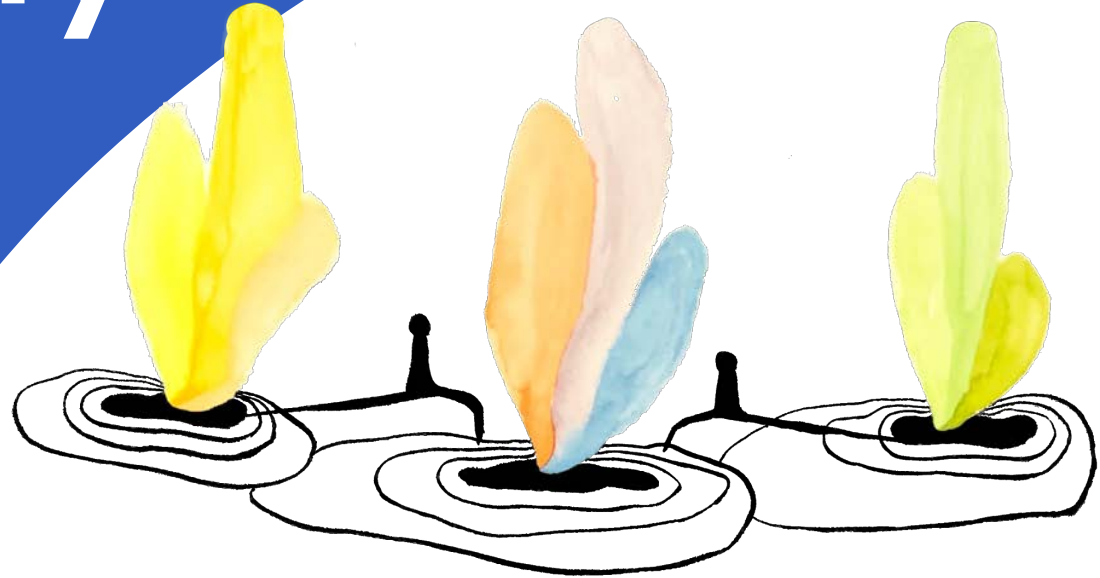


# Creekside Elementary

Schoolyard Design

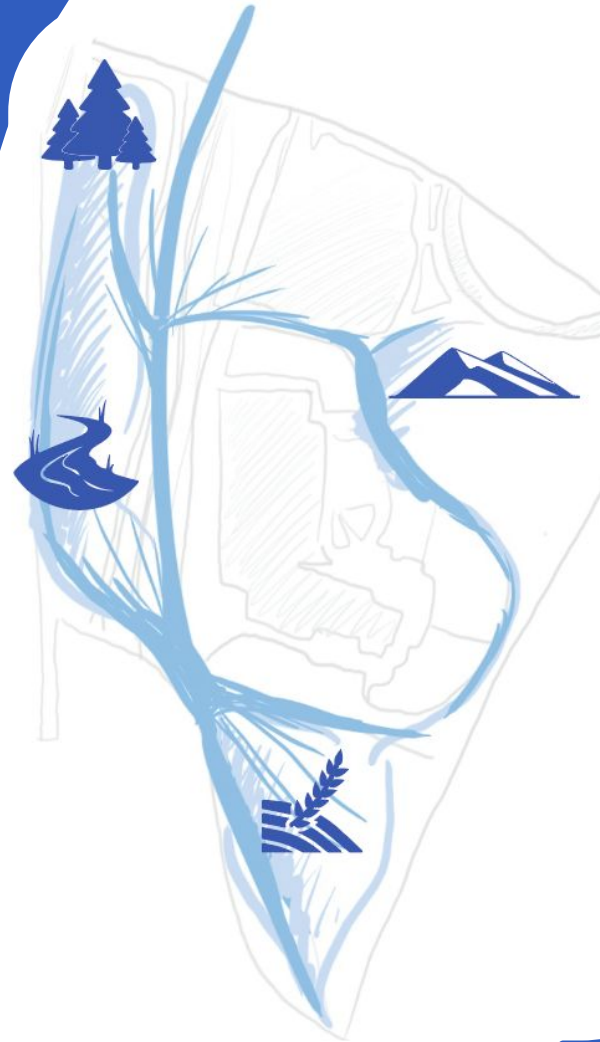
Isabella Manzo  
Cash Lopez  
Casey Sherrerd  
Ben Pesso  
Cooper Helm



# Concept

Our design aims to improve the connection between the students and the natural systems that surround them.

Using ecologically themed areas, we aim to intuitively teach kids about the ecosystems that Bear Creek has helped shape.



# Ecosystem Zones



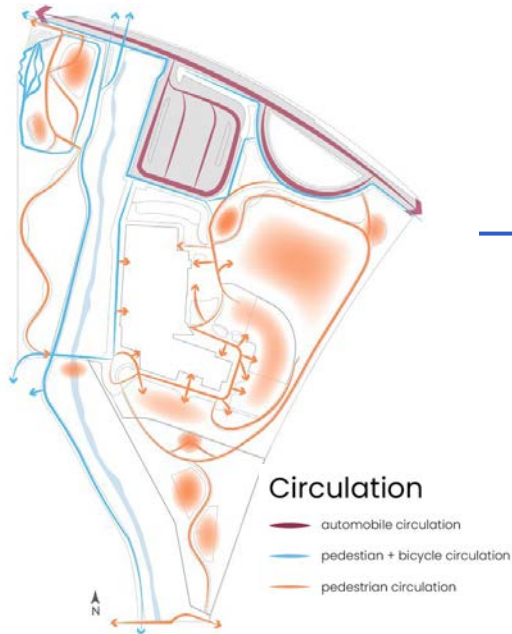
# Diagrammatic Master Plan



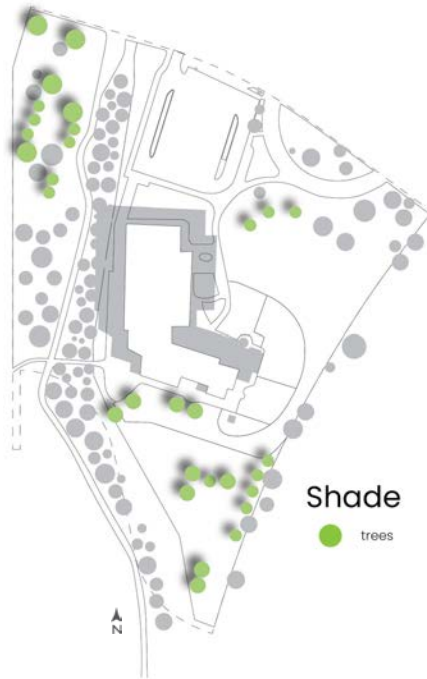


# Improved Site Conditions

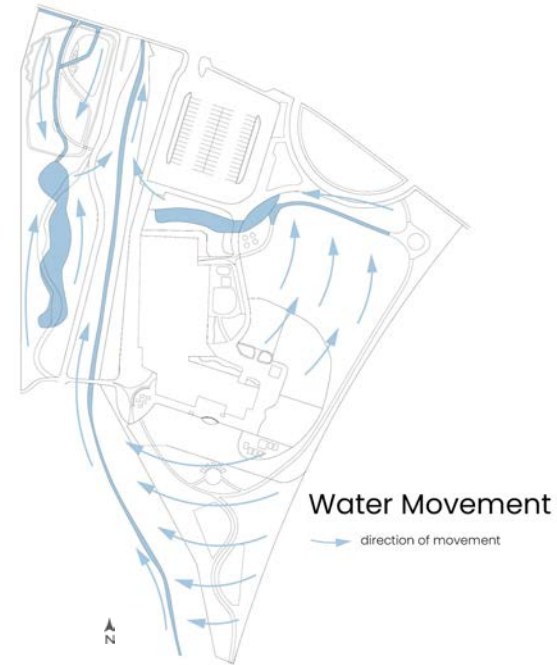
## Circulation



## Shade



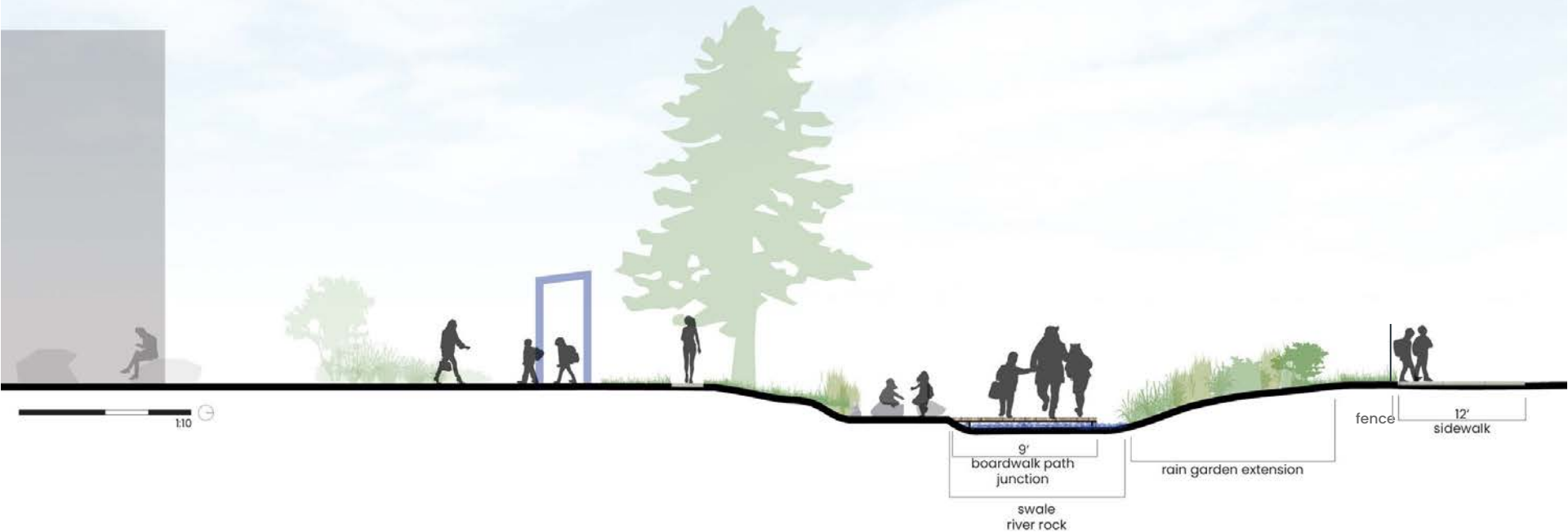
## Water



# Foothills Zone



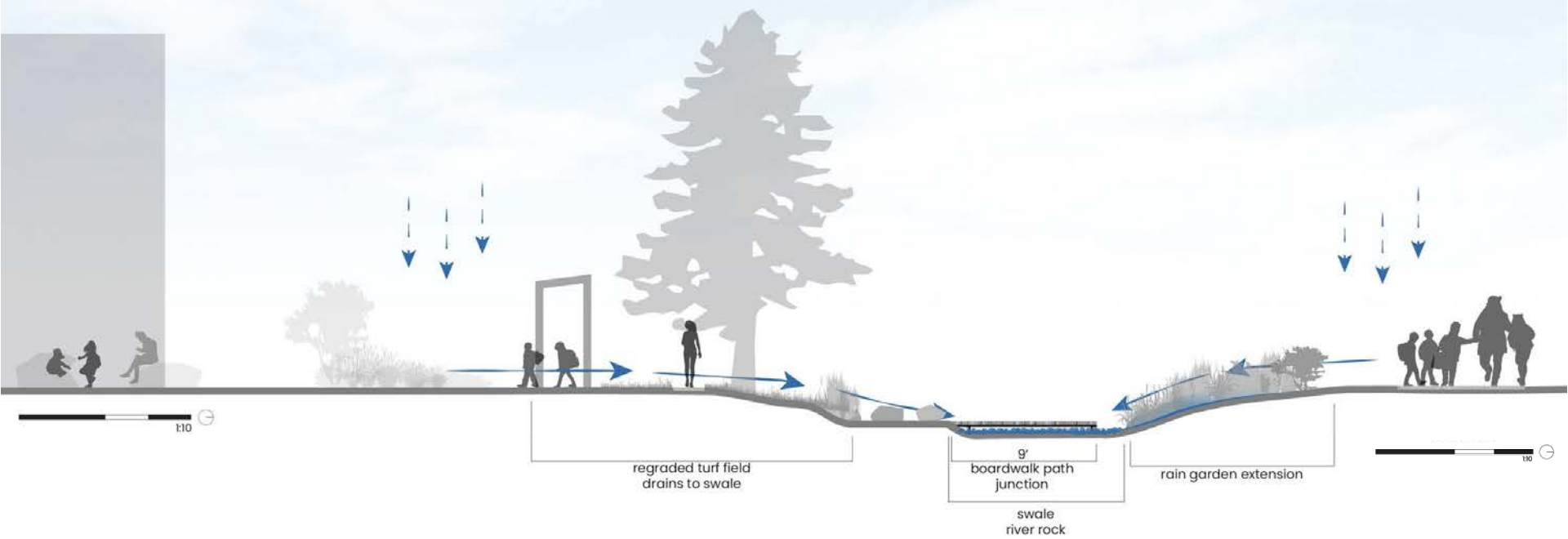
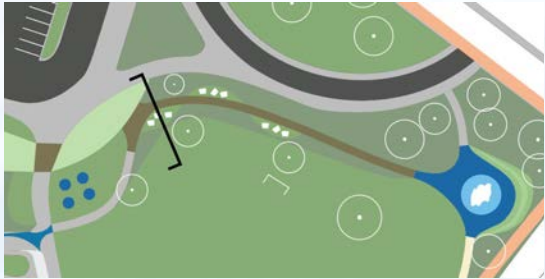
- 1 Foot Bridge
- 2 Seating
- 3 Extended Rain Garden
- 4 Wood Deck Covering Drainage Rocks
- 5 Rock Play
- 6 Flagstone Path
- 7 Artificial Climbing Boulder
- 8 Grassy Hill
- 9 Gate To Bus Loop





# Foothills Zone

Stormwater management





# Foothills Zone

## Plantings



**Curl-leaf mountain mahogany**

*Cercocarpus ledifolius*



**Red osier dogwood**

*Cornus sericea*



**Mexican feathergrass**

*Nasella stipa tenuissima*



**Little bluestem**

*Schizachyrium scoparium*



**Canada anemone**

*Anemone canadensis*



**Purple coneflower**

*Echinacea purpurea*



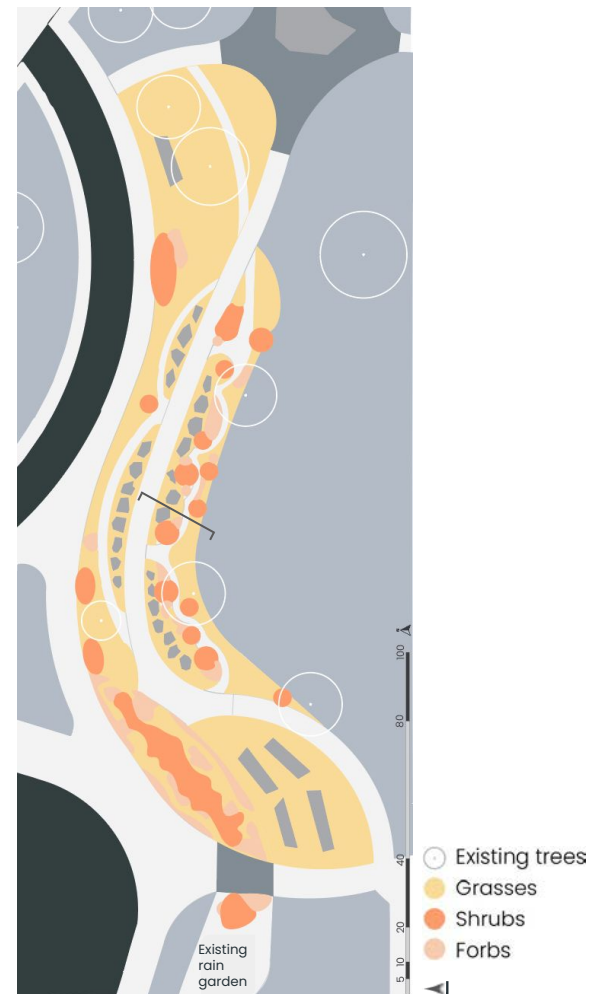
**Mixed fescue**

*Festuca*



**Buffalograss**

*Bouteloua dactyloides*



# Foothills Zone





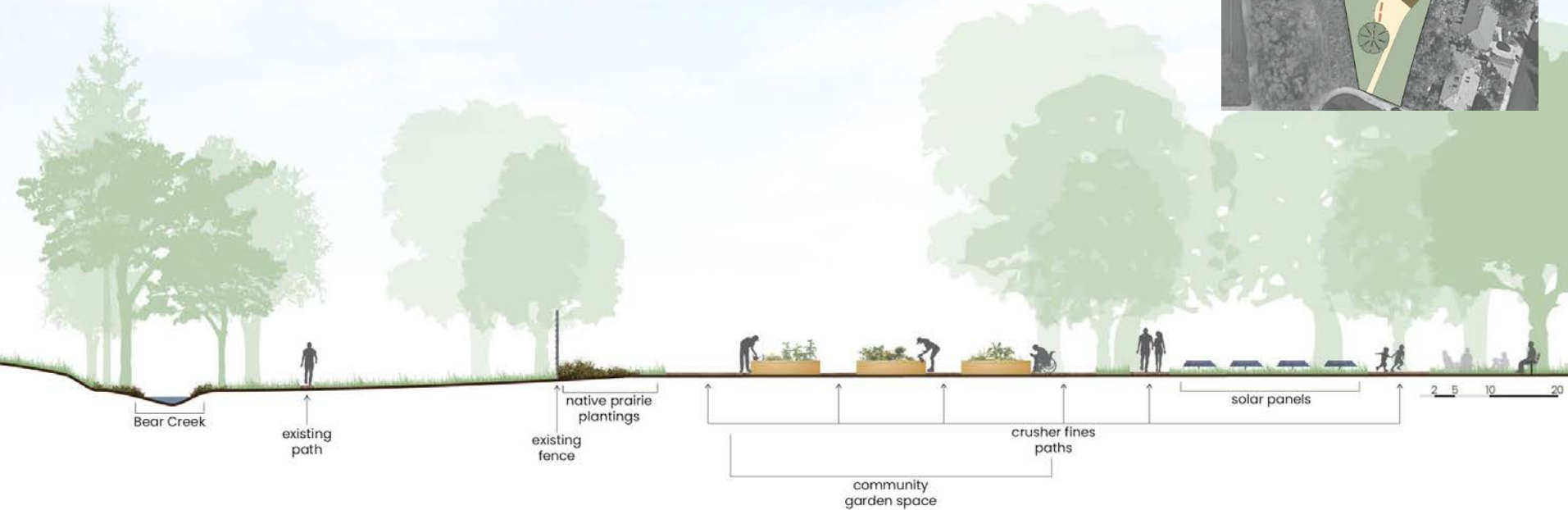
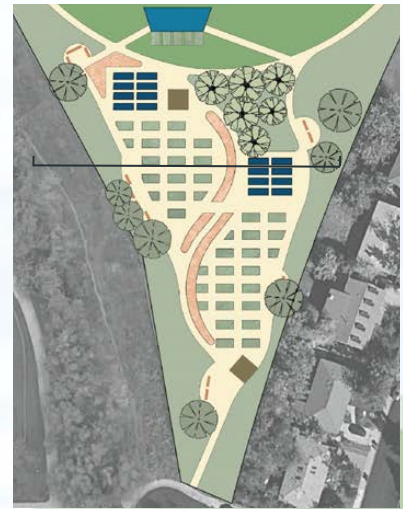
# Prairie Zone

- 1 Existing Student Gardens
- 2 Outdoor Classroom/Gardens
- 3 Seating
- 4 Solar Field
- 5 Shed
- 6 Community Garden Plots
- 7 Pollinator Planters
- 8 Fruit Trees
- 9 Community Gateway



# Prairie Zone

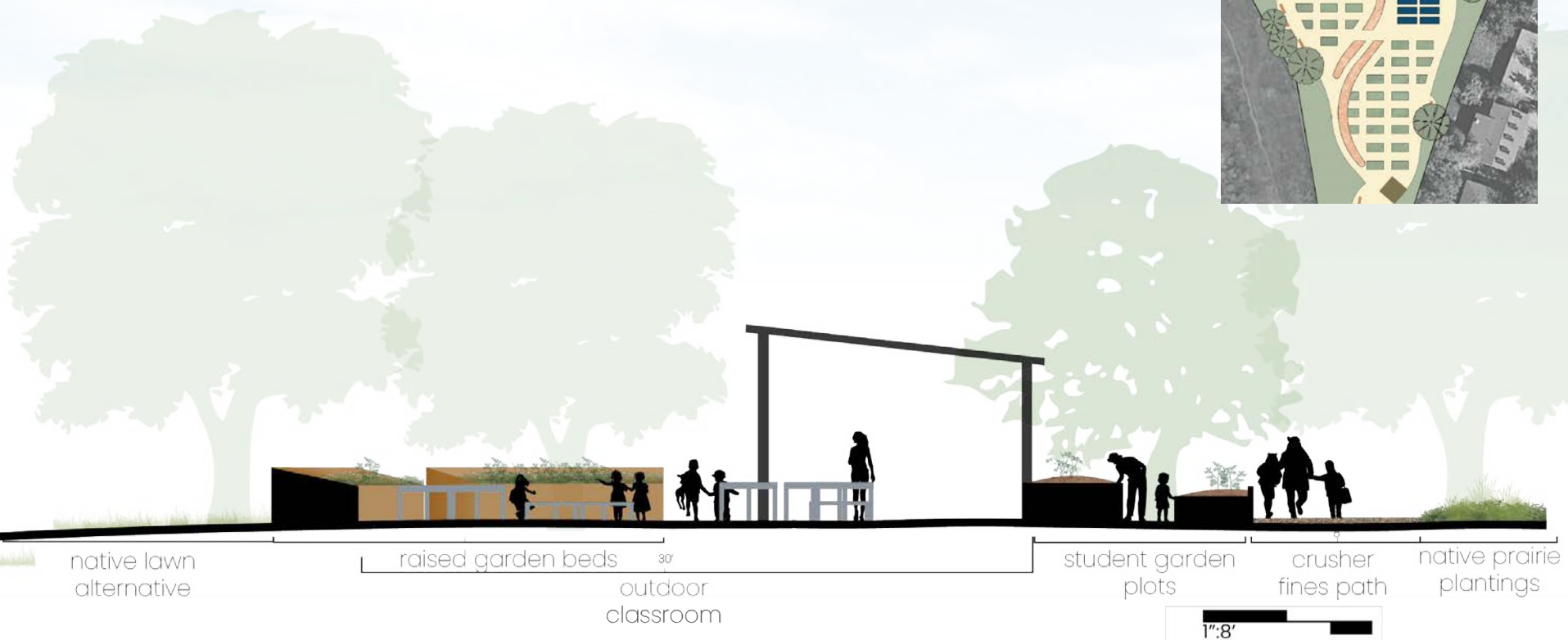
## Community Gardens





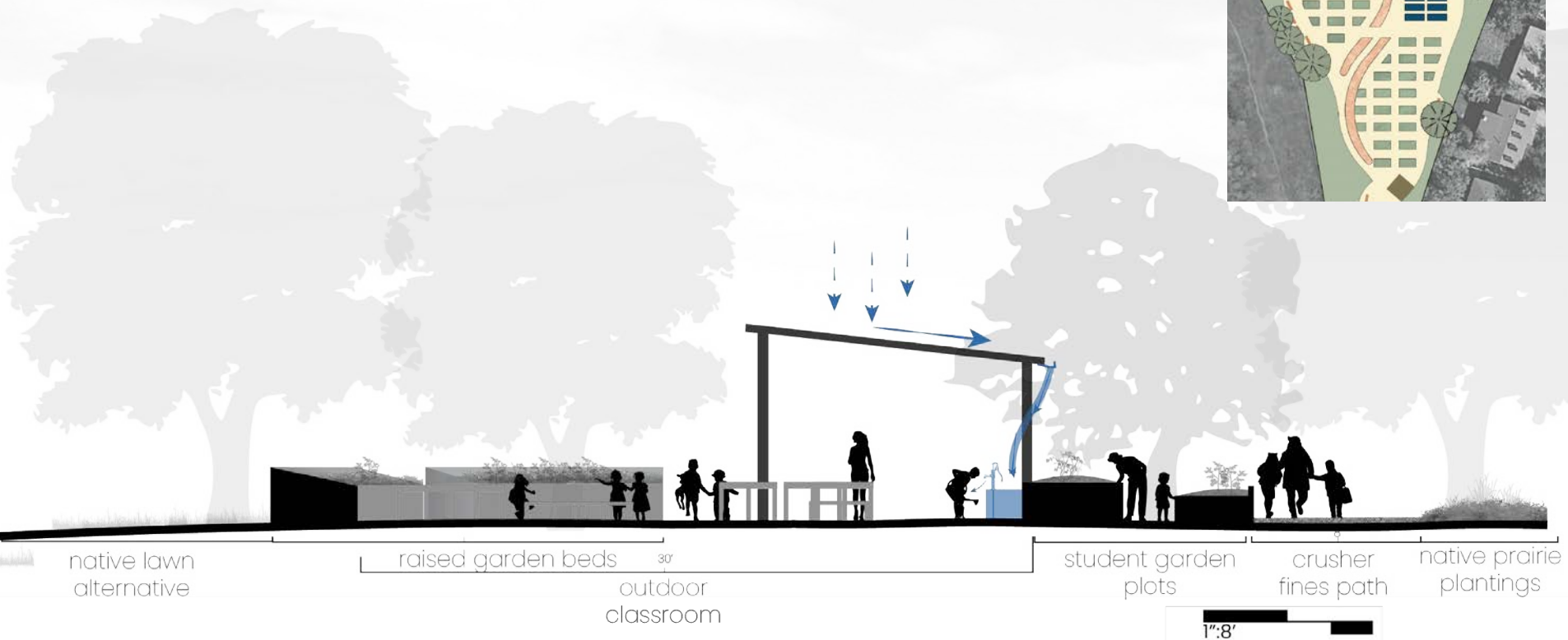
# Prairie Zone

## Outdoor Classroom



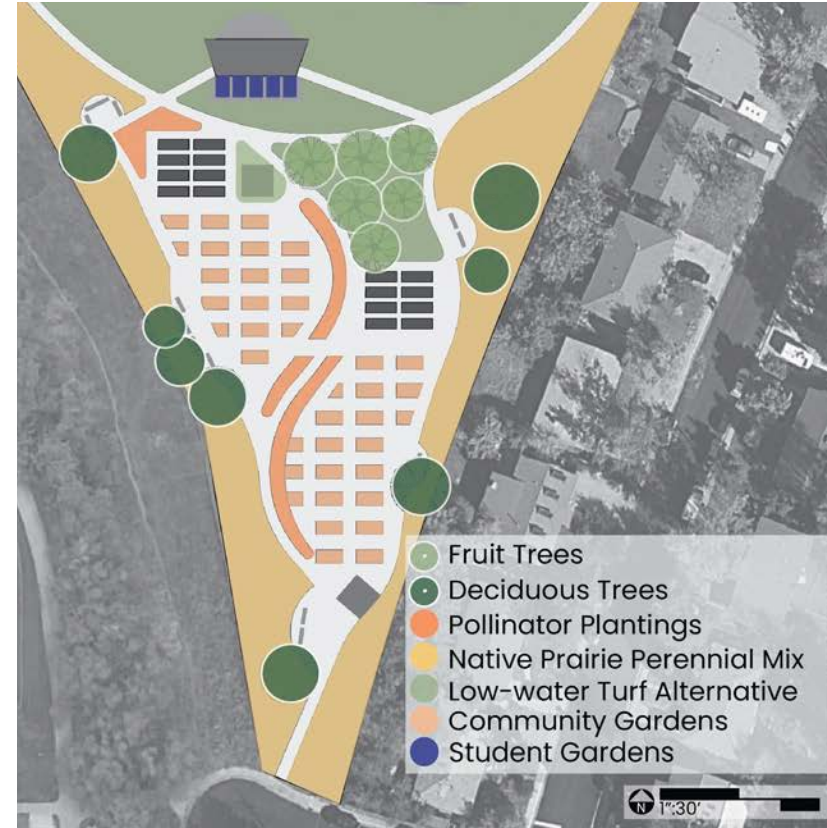
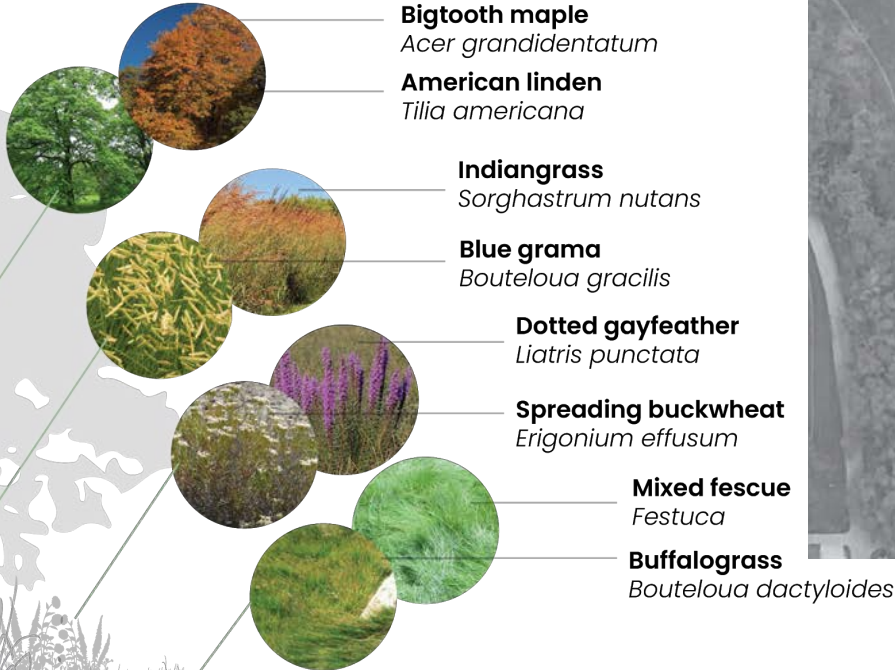
# Prairie Zone

## Outdoor Classroom



# Prairie Zone

## Plantings





# Prairie Zone





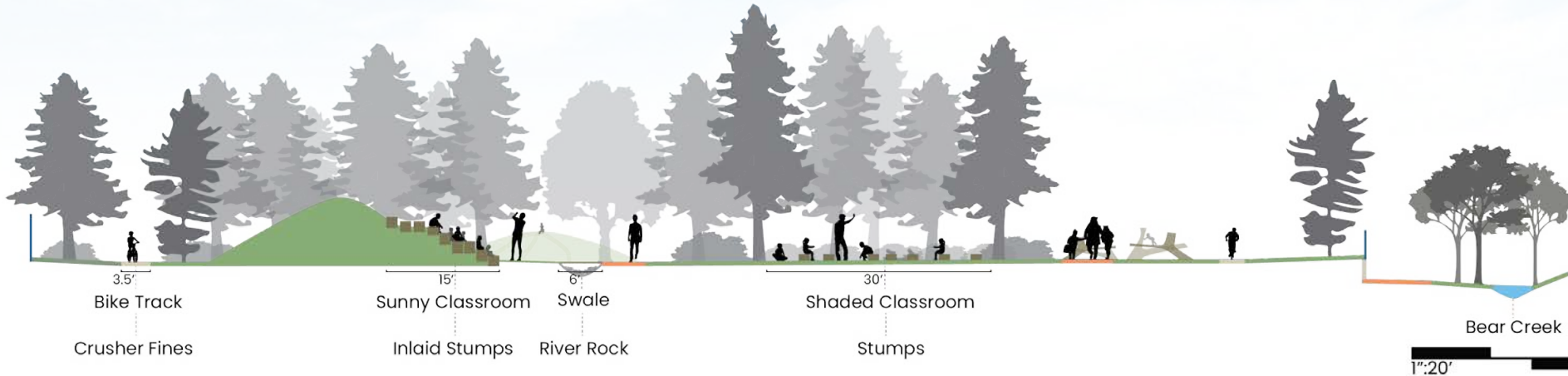
# Montane Zone

- 1 Swale
- 2 Bike Track Starting Hill
- 3 Seating
- 4 Nature Play Area
- 5 Shaded Outdoor Classroom
- 6 Sunny Outdoor Classroom
- 7 Stepping Stone Connection To Boardwalk



# Montane Zone

## Outdoor Classrooms



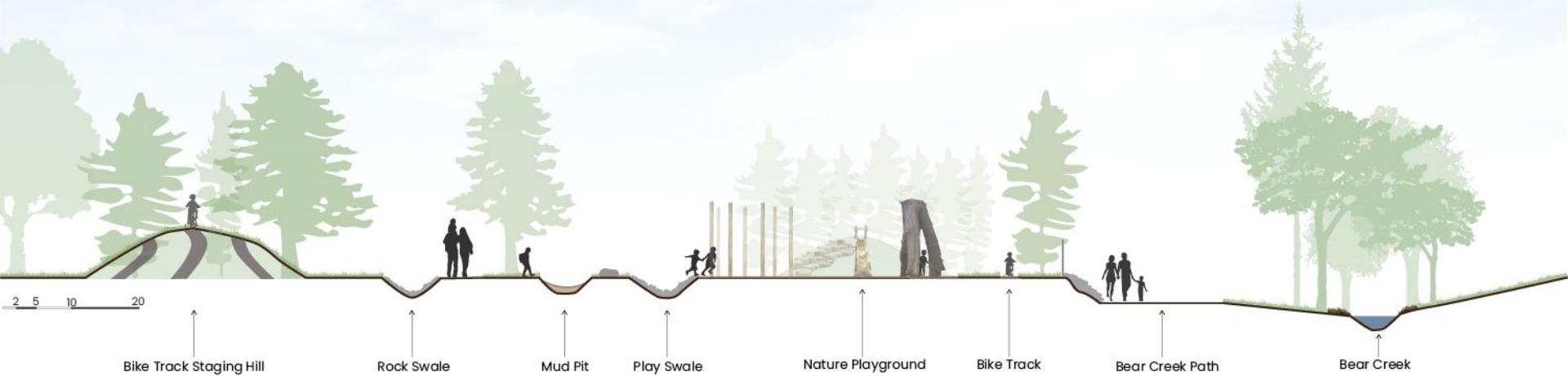


# Montane Zone



# Montane Zone

## Nature playground





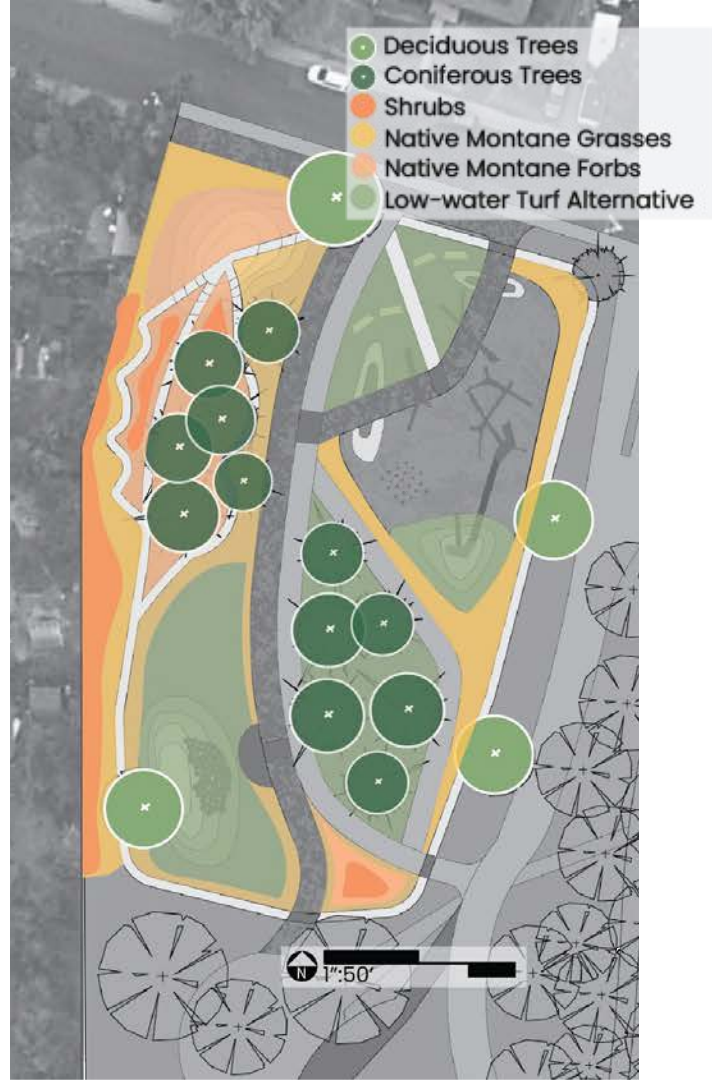
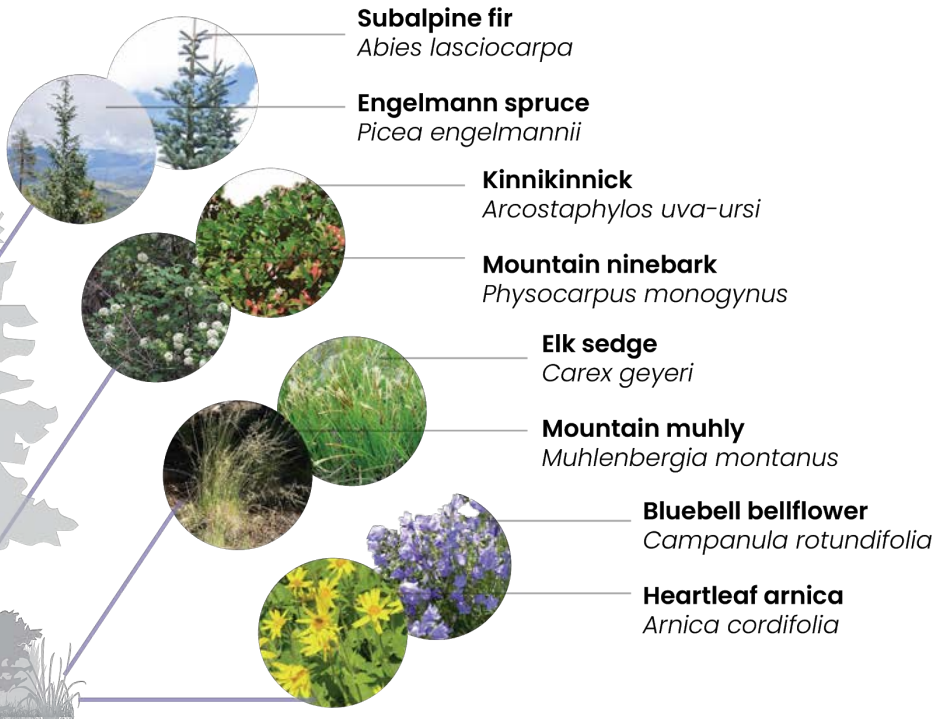
# Montane Zone

Nature playground



# Montane Zone

## Plantings





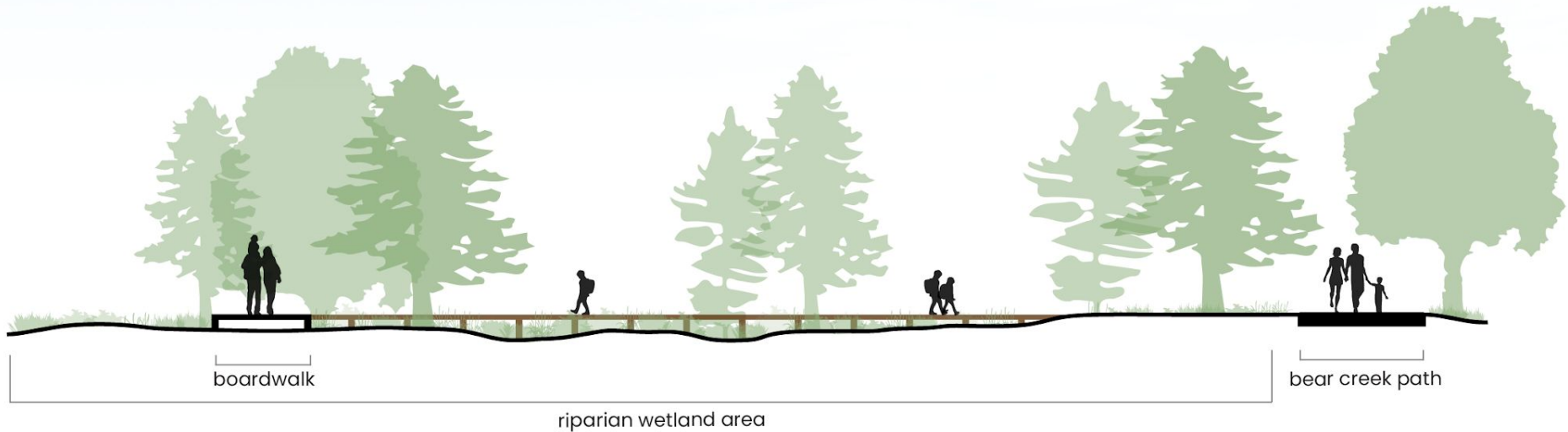
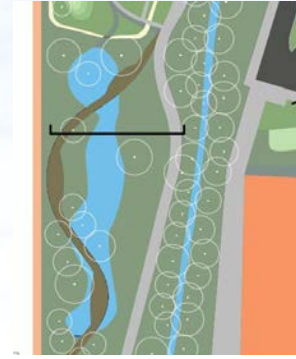
# Riparian Zone

- ① Swale
- ② Culvert
- ③ Stepping Stone Overflow Dam
- ④ Existing Riparian Ecosystem
- ⑤ Boardwalk
- ⑥ Existing Culvert



# Riparian Zone

## Nature Walk





# Funding Support and Opportunities

By 2025 The Trust for Public Lands aims to expand their Green Schoolyard initiative and "advocate at the federal, state, and local levels to increase funding sources for green schoolyards, support policies like shared-use agreements, and build recognition of the importance of green schoolyards in improving educational outcomes, cooling neighborhoods, and managing floodwaters."



"GOCO invests a portion of Colorado Lottery proceeds to help preserve and enhance the state's parks, trails, wildlife, rivers, and open spaces. Our independent board awards competitive grants to local governments and land trusts, and makes investments through Colorado Parks and Wildlife."



LANDS

We will generate more than \$10 billion in funding for land protection and establish 500 protected places for public benefit, deploying innovative tools to advance community conservation goals.



PARKS

We will put a quality park within a 10-minute walk of five million people who currently lack access by creating new parks or transforming underutilized parks in the communities of greatest need and by activating local and national partnerships.



SCHOOLYARDS

We will grow our schoolyards program to expand park access for nearly 6 million people across the country and open green schoolyards in 20 underserved school districts.



TRAILS

We will connect more than 3 million people to 1,000 miles of local and national trails and greenways.



# Funding Support and Opportunities



## Goals

All Boulder County youth regardless of race, ethnicity, and income are provided the opportunity to connect with nature.

Boulder County youth are the most environmentally literate in the United States.

Peaceful Playgrounds provides a list of available School Playground Grants, many of which Creekside Elementary would qualify for!

### Shade Structures Grant Program

Organization: American Academy of Dermatology

Purpose: Purchase of permanent shade structures designed to provide shade and UV ray protection for outdoor areas.

Amount: \$8,000

### Fruit Tree 101 Program

Organization: Fruit Tree Planting Foundation

Purpose: Provides 20-25 trees on school grounds, including materials, installation, and on-site curriculum.

Amount: 20-25 Fruit Trees

### Healthy Kids Initiative

Organization: Whole Foods Foundation

Purpose: school/community native plant garden, a forest improvement project, a stream-side restoration plan, a recycling program...

Amount: \$15,000-\$25,000





Thank you!