

# SALVA(GE)TION LIBRARY

reclaiming denver's globeville



**COLORADO GREEN BUILDING GUILD**  
STUDENT PROJECT OF THE YEAR AWARD 2022

**LAURYN HOWELL**

laurynehowell@gmail.com

605.838.5304



Program in Environmental Design  
Senior, Spring 2022  
University of Colorado Boulder

# SALVA(GE)TION LIBRARY

The identity of Salva(ge)tion Library (pronounced “Salvation”) begins with a study of embodied energy both in form and in concept. Focusing equally on the life cycle of the materials that the library uses in its construction, as well as the metaphorical cycle of creative energy throughout the building. This library stands for harmony and equilibrium, challenging what it means to be a holistically meaningful addition to the Globeville community, in form and in function.

## *SALVAGE OR SALVATION?*

While Globeville doesn’t need to be “saved” from years of industrial exploitation, as a community, they need the resources to build themselves up. The identity of Salva(ge)tion Library continues to grow alongside its patrons as they grow the community around them.

### ***Reclaimed and recycled materials.***

Salva(ge)tion Library is constructed out of almost entirely sustainably sourced materials. Brick, timber and steel are amongst the recycled materials used in construction of Salva(ge)tion Library. Most iconically, reclaimed brick from the Omaha-Grant Smelter, a now-demolished beacon that represented the exploitation of Globeville’s industrial park, is used to create perforated brick facades around the building’s exterior.

### ***Structural Insulated Panels.***

Where recycled timber could not be used, SIPs were installed to ensure the overall quality of insulation, indoor air, and ultimately combating excessive construction waste.

### ***Rainwater + Snowmelt Collection.***

Sloped roof pitch and beams are used to channel and collect rainwater for the library’s greywater system.

### ***Daylighting.***

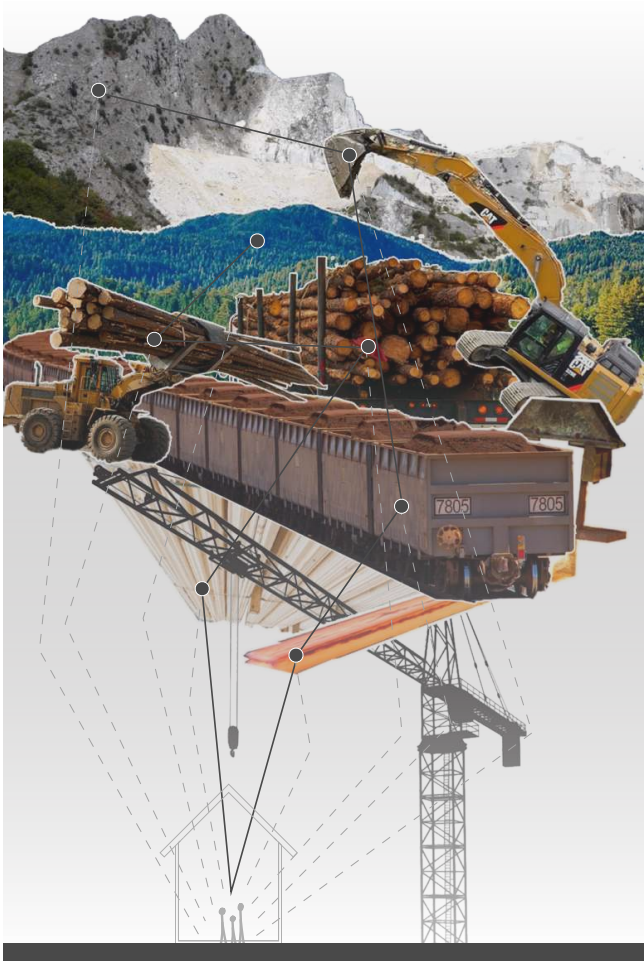
Voids in the gently sloped roof create light wells that distribute natural light to all levels of the building, avoiding excess direct sunlight, the overuse of artificial light, and overall improving tenant health and wellbeing.

### ***Solar panels.***

Solar panels on the south-facing balcony of Salva(ge)tion Library are used to power the technology labs on the second floor of the building.

### ***Program.***

The programmatic flow from floor to floor encourages the cycle of the creative process, from inspiration to creation. These elements include: exhibits that exemplify local artists, authors, and other creators, collections dedicated to Globeville’s rich history, education and technology hubs that provide accessible resources to gather new knowledge, and a makerspace/studio to bring ideas and inspiration to reality. Ultimately creating “embodied energy” of innovation, this pays homage to the foundational inspiration and greater meaning of Salva(ge)tion Library within the Globeville community.



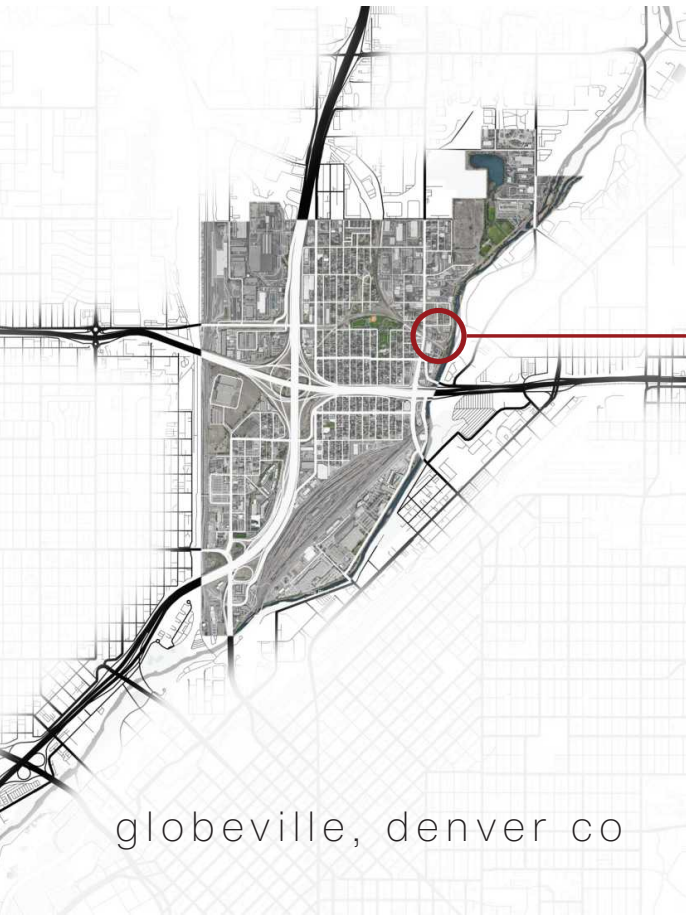


Initial form explored through a series of parti models, all taking inspiration from the precedent study of embodied energy. Including roof concepts. Forms manifest the disproportionate funneling of material and labor that can go into a simple building that may have little to no intention.

*constructed with watercolor paper and basswood.*



## SITE CONTEXT + HISTORY



Located in the Globeville neighborhood, off of Washington St. just north of the I-25 and I-70 mousetrap, this neighborhood has been infrastructurally undercut and neglected for decades. Situated behind an old slaughterhouse that formerly housed the Rocky Mountain Land Library, and just west of the South Platte River, Salva(ge)tion Library is meant to sit at a cruxpoint, and connect its industrial history with the prospect of beauty and inspiration. Using the bricks from the Omaha-Grant Smelter (pictured right + below) in construction of Salva(ge)tion Library, Globeville is both physically and metaphorically reclaiming the community, while keeping the community's history displayed proudly on their sleeve.







FRONT EXTERIOR





REAR EXTERIOR

## FLOOR PLANS

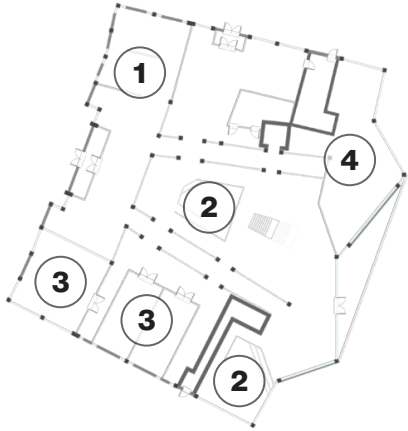
program elements by level — finding harmony in the creative process, creating an endless loop of creativity and inspiration for the Globeville community.  
**"metaphorical embodied energy"**

### IDEATE

level I

- 1 LOCAL ARTIST EXHIBIT
- 2 CONVERSATION PITS
- 3 GROUP WORK OFFICES
- 4 ROCKY MOUNTAIN LAND LIBRARY COLLECTION

Everything has a **precedent**.  
 Get inspired, make a friend, have a conversation.



### EDUCATE

level II

- 5 TECHNOLOGY / COMPUTER LABS
- 6 MAIN BOOK COLLECTIONS
- 7 INDIVIDUAL WORK SPACES

Get focused.  
 Learn something new today for a **better tomorrow**.



### CREATE

level III

- 8 MAKERSPACE / STUDIO

Keep ideas **locally sourced**.  
 Make something here for the artist exhibit on level I.





## FLOOR I IDEATE



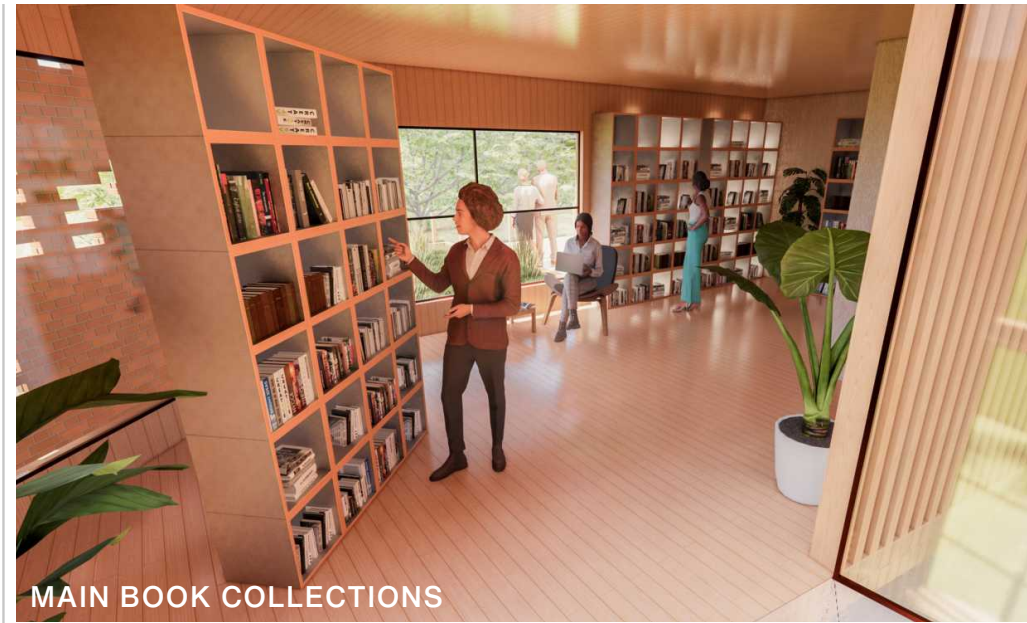
### *SUSTAINABLE DESIGN ELEMENT INTEGRATION*

**Reclaimed and Recycled Materials** are implemented in the Rocky Mountain Land Library Collection room, using the most reclaimed brick from the smelter, and adhering to a similar aesthetic to its original location in the old brick slaughterhouse.

**Daylighting** techniques are used here through diffusing direct sunlight with perforated brick walls.



## FLOOR II EDUCATE

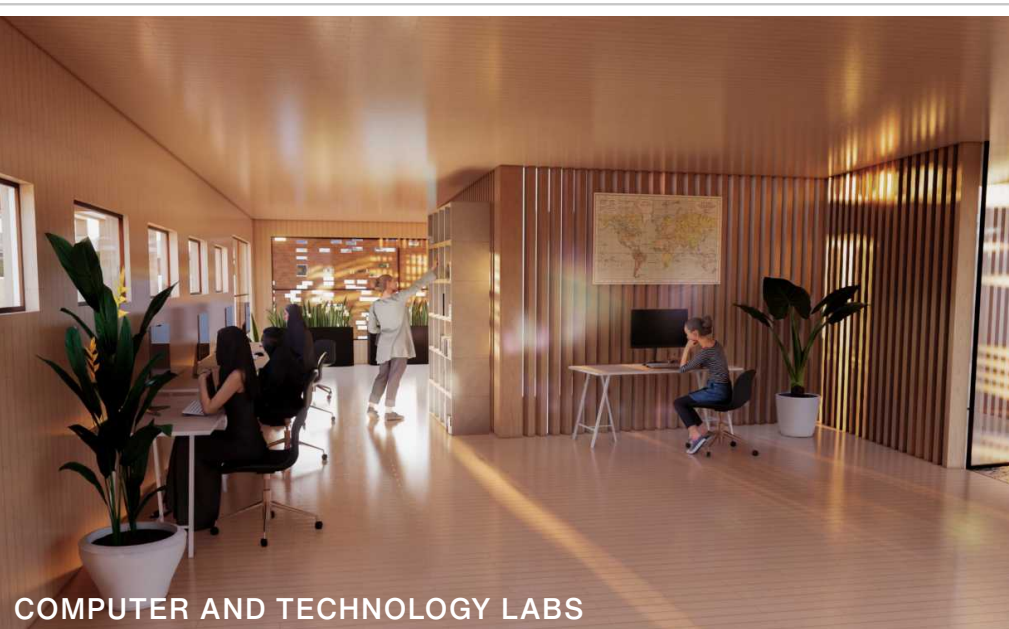


MAIN BOOK COLLECTIONS

### *SUSTAINABLE DESIGN ELEMENT INTEGRATION*

**Solar Panels** are located on the deck and are used to power the computer and technology labs.

**Rainwater Collection** is used for the greywater system used in the floor two and all other bathrooms housed in the library, and is used to water all plants and greenery located throughout the building.



COMPUTER AND TECHNOLOGY LABS

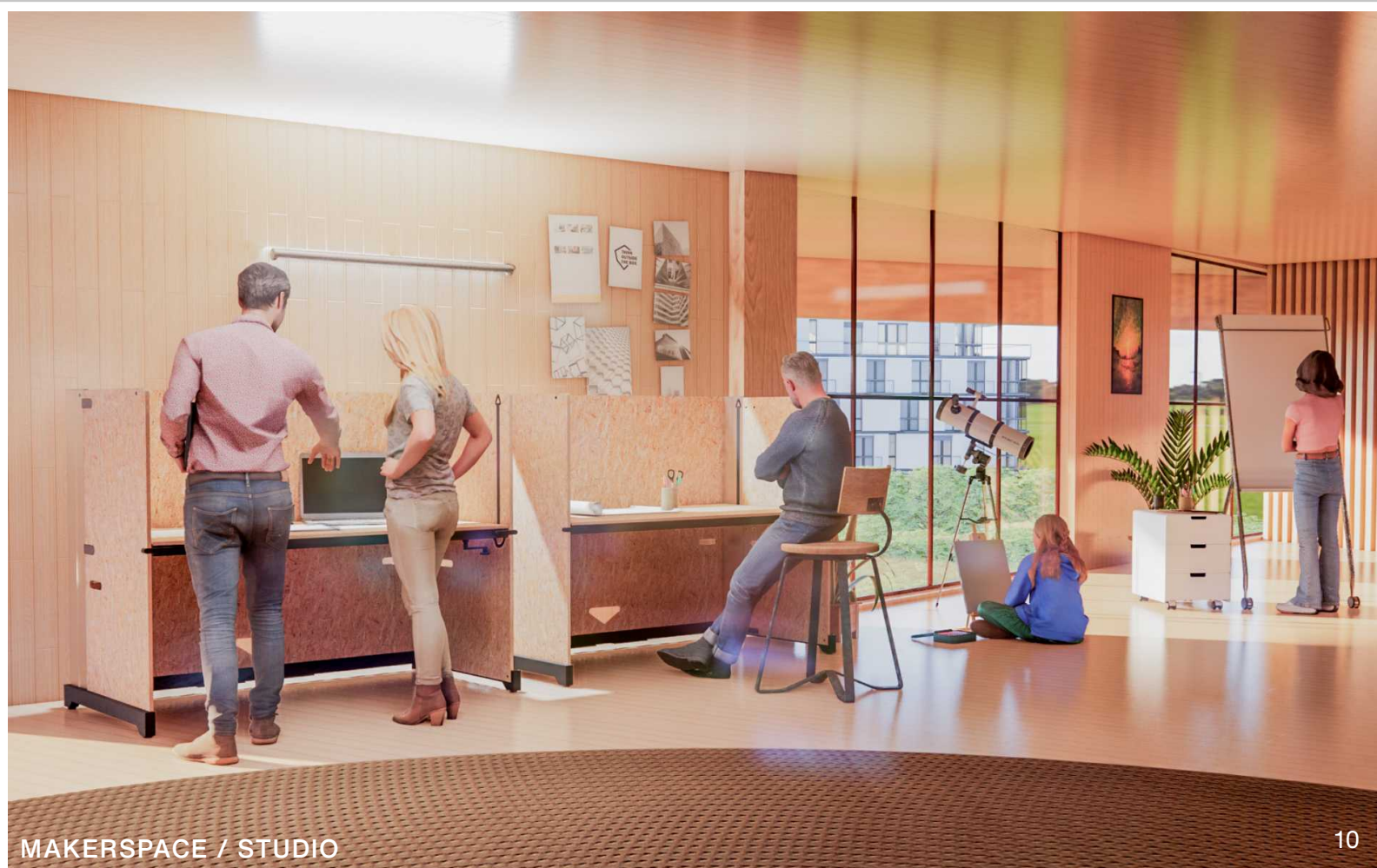
## FLOOR III CREATE



*parti sketch —  
finding the balance, physically and  
metaphorically, in the disproportion  
of embodied energy*

### *SUSTAINABLE DESIGN ELEMENT INTEGRATION*

**Daylighting** techniques are also used on this floor, through diffusing direct sunlight with perforated brick walls as well as large, northeast facing windows to minimize the need for artificial lighting.



MAKERSPACE / STUDIO

# SALVA(GE)TION LIBRARY

reclaiming denver's globeville

