

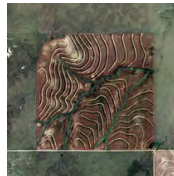
# Intraurban Agrarianism

## Globeville Ecosophical Library

Chris Hamilton  
April 27, 2022  
ARCH 4100  
Final Review

Globeville is an intersectional community of historic divestment and current socio-economic displacement. It is the site of many transformational processes: wealth production and redirection, transitory space, privileged land use and water connection that have contributed to the strength of this community but also its challenges.

Globeville has long been without a public library, this proposal intends to embed within the community a responsive space rooted in resource sovereignty, urban agrarian practice, and ecosophical thinking.



Green Space Fragmentation  
Primary Corridors

# Grounded Concept



The transformational landscape extends to the spatial configuration of urban- industrial- natural environments of Colorado and Globeville. Longs Peak- symbol of wilderness on the Front Range crosses the site to meet the Denver Colosseum and NWC- symbols of the west and man's production of the landscape through agriculture and mining. Suncor oil refinery- symbol of raw industry, first must pass through Globeville, which supplied the workers and bears the impacts of heavy pollution, to the deposition of wealth in downtown Denver. The South Platte River runs through it all, as it has for generations in this place.

This spatial and theoretical condition served informed building program, form, and emphasis. It supports urban agrarian practices but also explores how to cultivate that philosophy through architecture. How the program can uplift, not burden, the people and land and the form communicate that. Leading with a strong existing culture of resilience in Globeville, an ecosophical library has the potential to further develop a durable land-based culture for the future of this place.





## Site



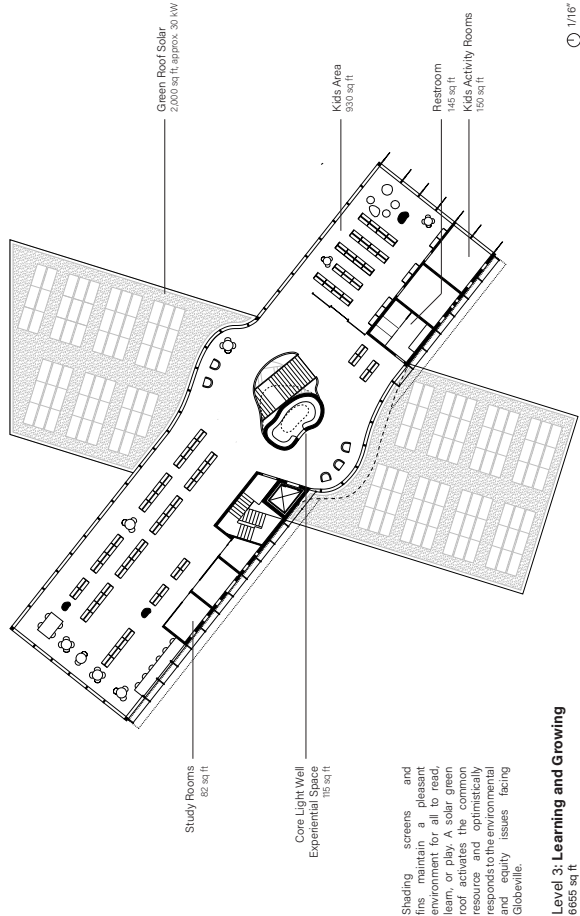
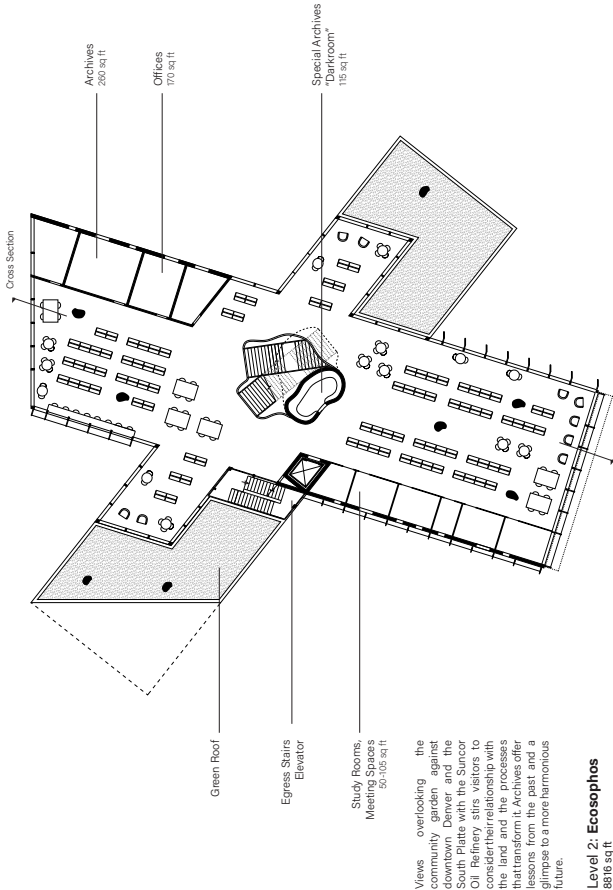
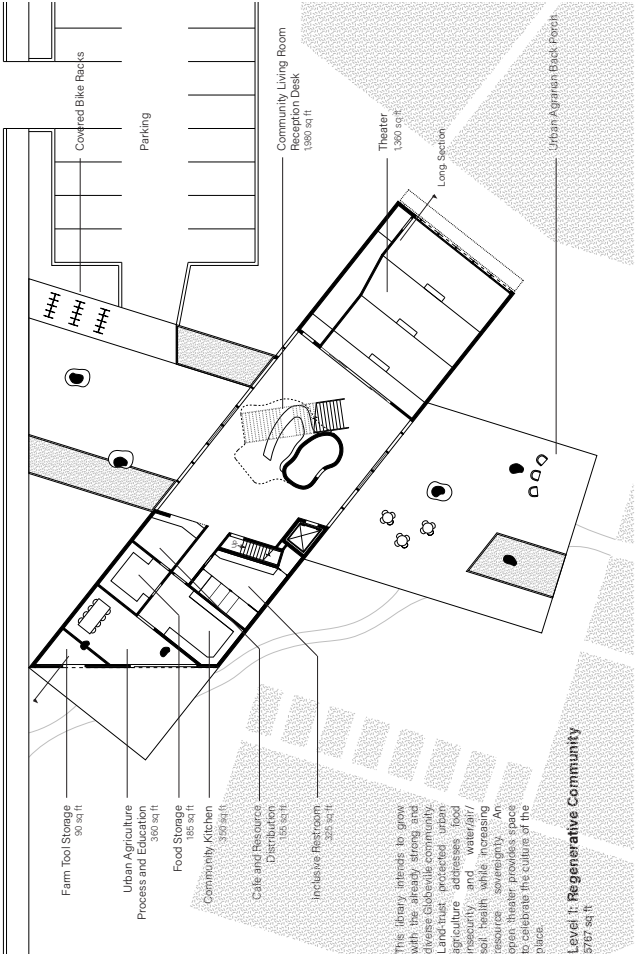
Above Flood Plain Below	Railroad	Washington St	4800 Washington Slaughterhouse	Urban Agriculture	Ecosophical Library Amphitheater	Levee Permeable Parking	NWC Stockyards



# Floor Plans

Building Total: 21,200 sq. feet

→ To Washington      48th Ave      → To S. Platte Bike Path







# Sections

1/16" = 1' - 0"

Cross Section



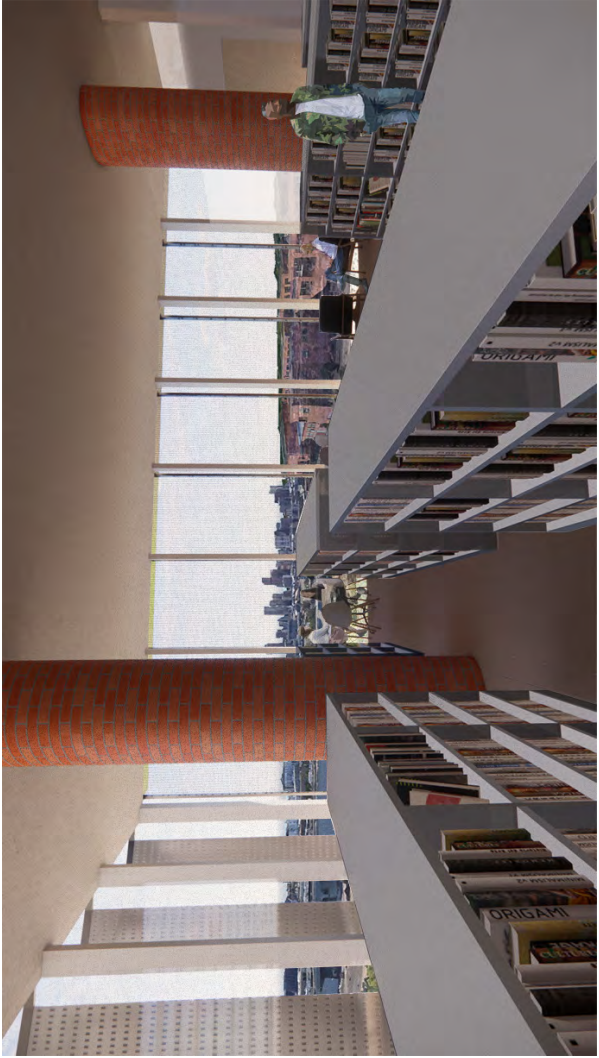
Longitudinal Section  
Perspective



An organic core and columns provide relief from the otherwise grid-imposed building. Brick is in conversation with the adjacent historic slaughterhouse and within, an experiential space is created.

Light wells puncture through the floor plates connecting the levels while egress wraps through the limited clear vertical space. A reception desk is tucked under in leftover space and creating a necessary buffer from low stairs.

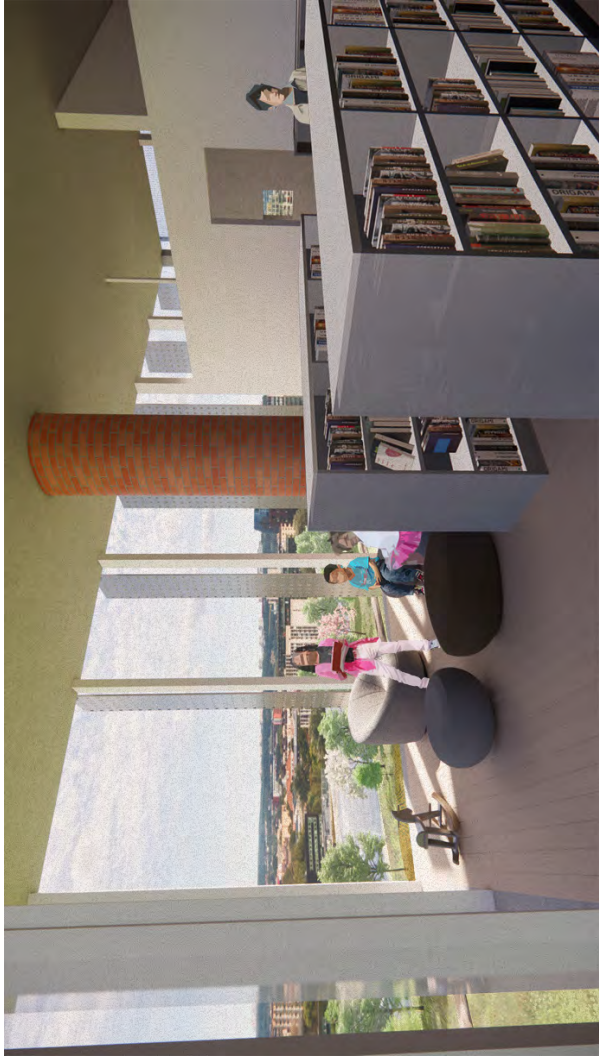




2nd Level,  
Looking out over urban  
farm to Denver



2nd Level  
Covered green roof and  
protected library alcove

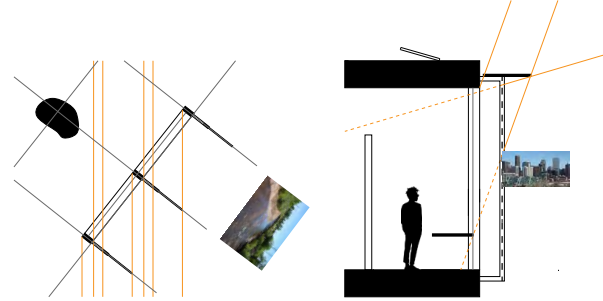


3rd Level,  
Kids area overlooking  
the South Platte River

# Section Studies

1/8" = 1' - 0"

Kids Section  
Southeast  
Views: South Platte



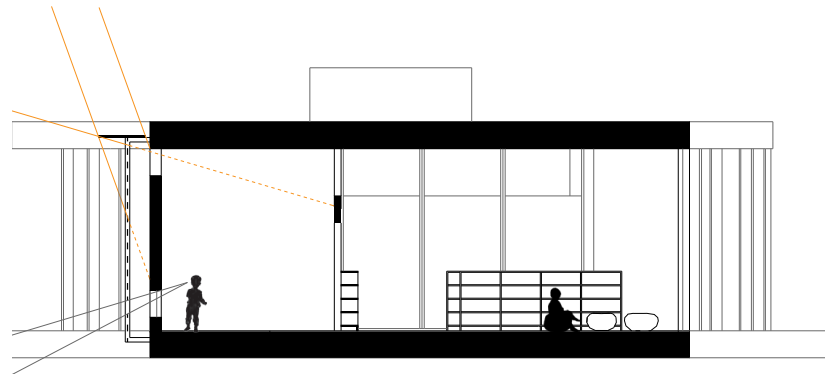
Window Counter  
Southwest  
Downtown Denver

June 21, 1:55 PM

Kids Activity Room  
Southwest  
Community farm

June 21, 1:55 PM

3rd Level

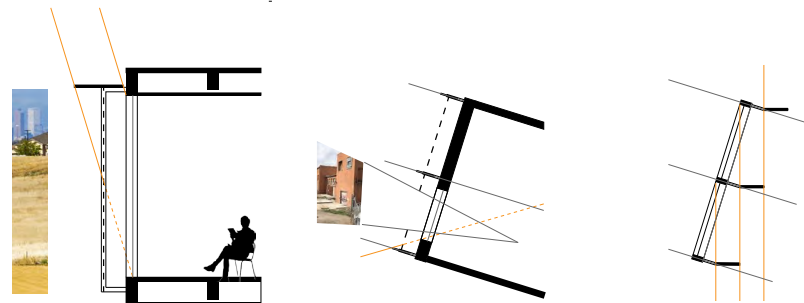


Northeast  
Solar green roof

Southwest  
Community  
Farm, Denver

June 21, 1:35 PM

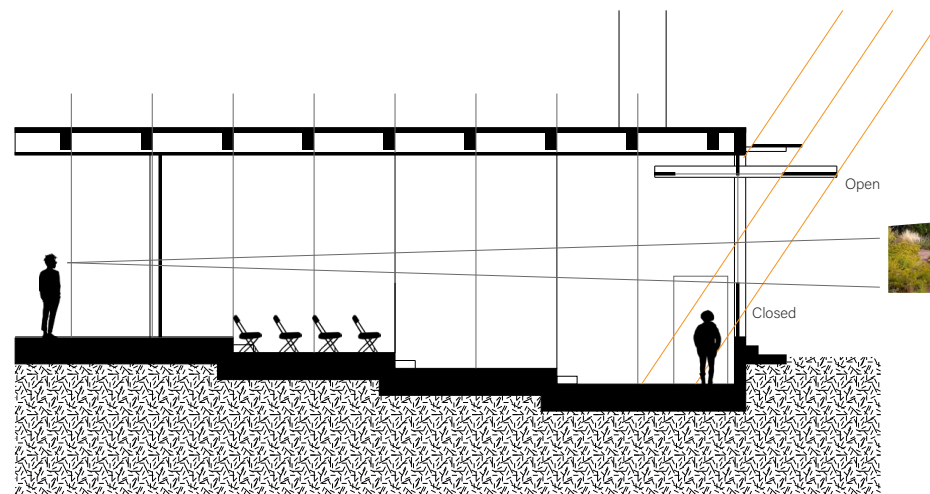
2nd Level



Study Room  
West - Northwest  
4800 Washington St

East-Southeast  
S. Platte, green roof

1st Level



Theater  
Southeast  
Views into farm, speaker/  
performance

Aug 10, 11:17 AM



















