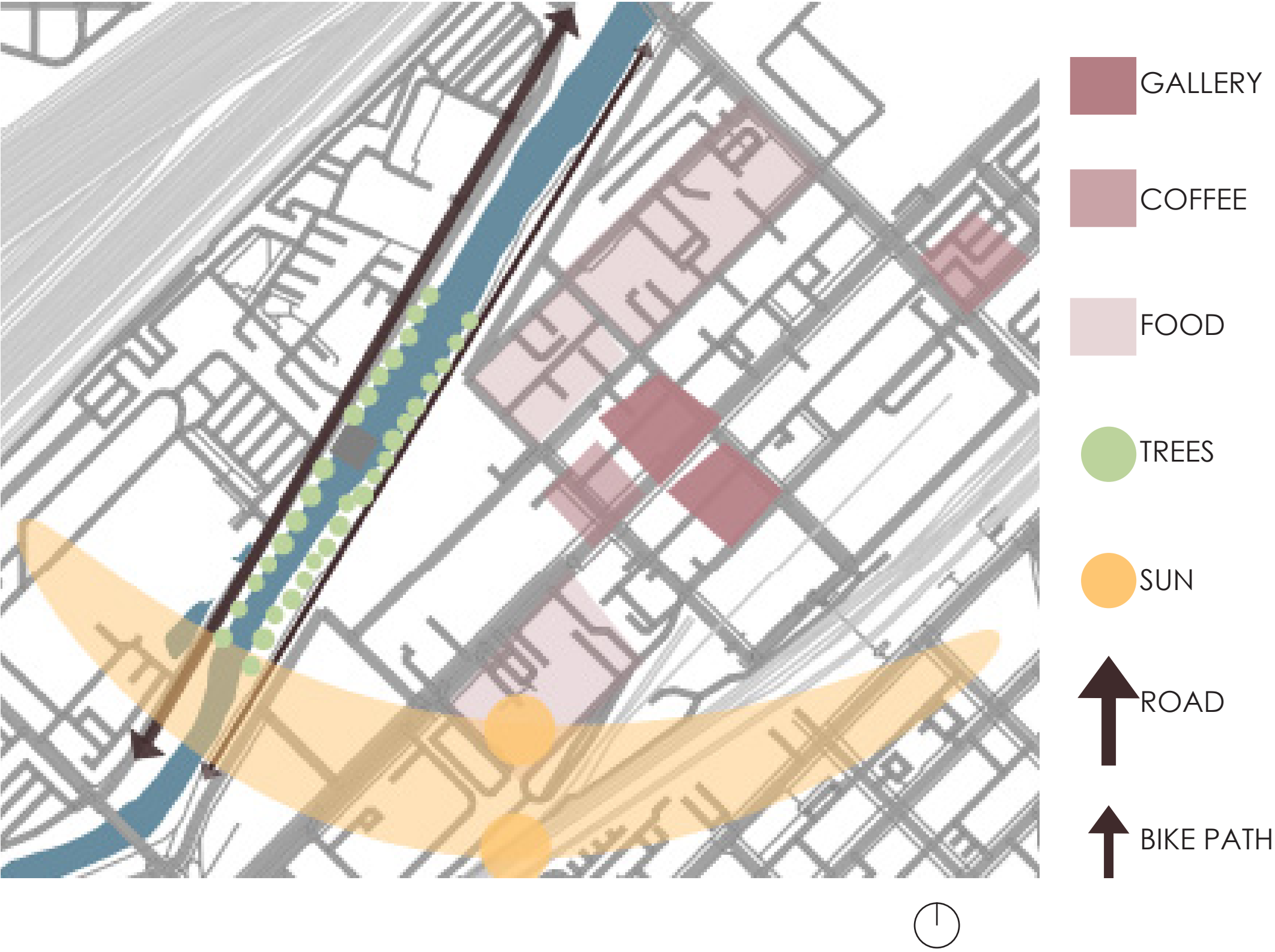


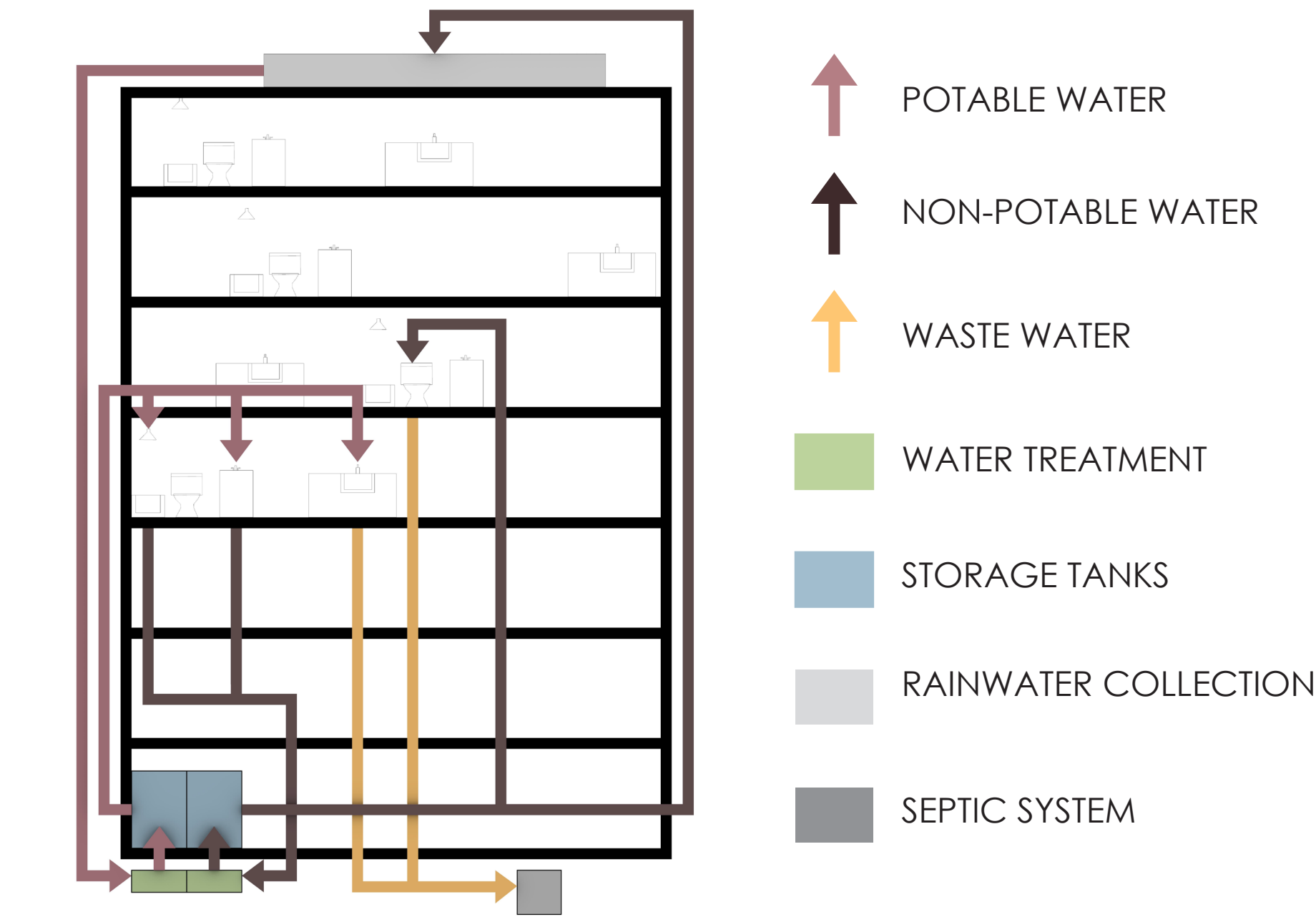
THE CONFLUENCE COMPLEX

NICOLE ANSPACH
ARCH 2100
DECE

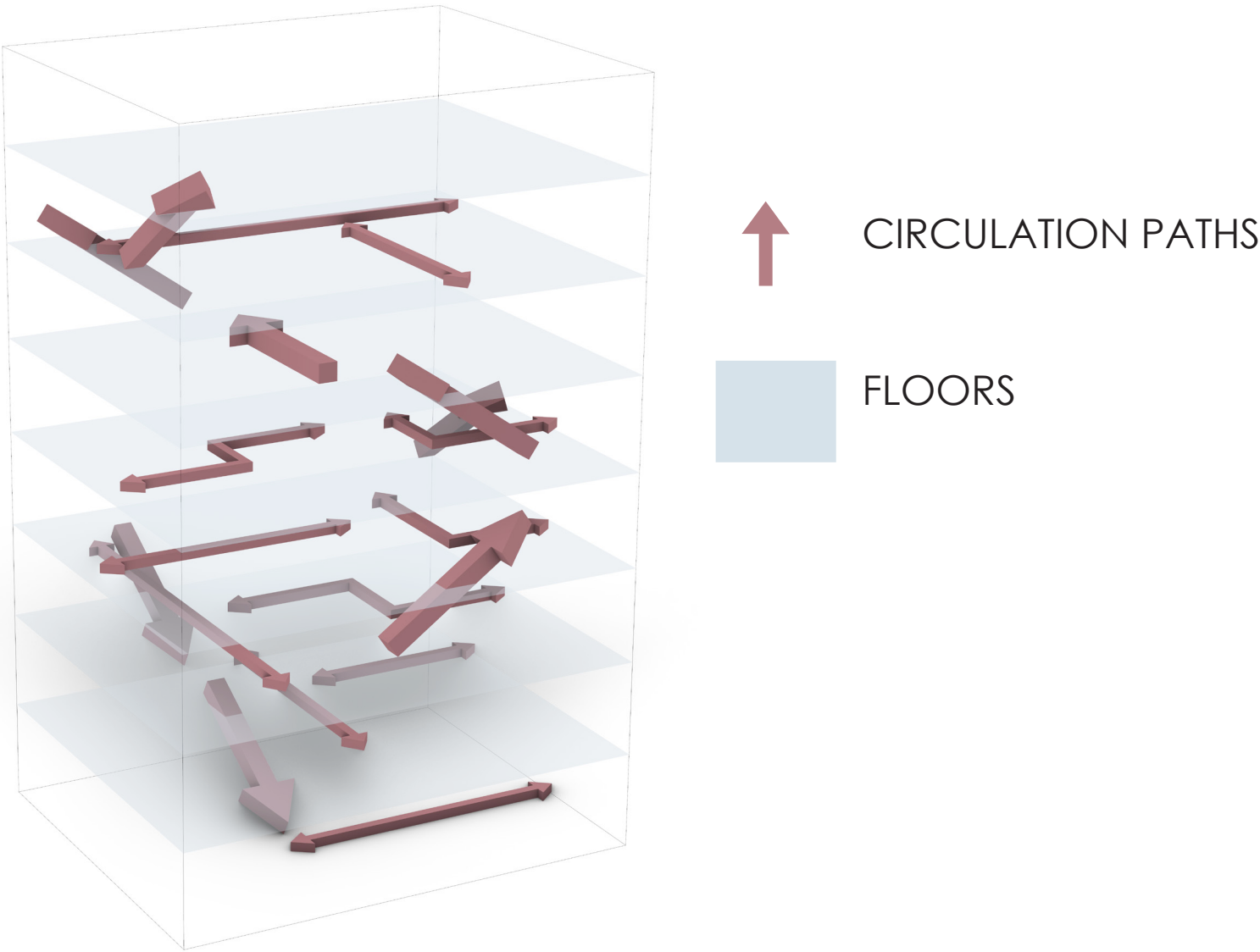
The CONFLUENCE COMPLEX is an apartment building where members of the diverse creative community in the Denver RiNo district can live in harmony with each other and nature. The RiNo district is a newly redeveloped area in Denver that aspiring professionals can affordably enjoy, through the implementation of sustainable micro housing. The unique circulation design focuses on journey and movement while also creating zones of contemplation. This increases the interactions among residents, allowing them to experience the energy and benefits of connecting with your neighbors and community. Comfortable and revealed viewing points create an atmosphere of vitality with the use of sunlight and shadows. The building is also responsible for its potable and non-potable water needs through rainwater collection and an intricate flow of water throughout the building.



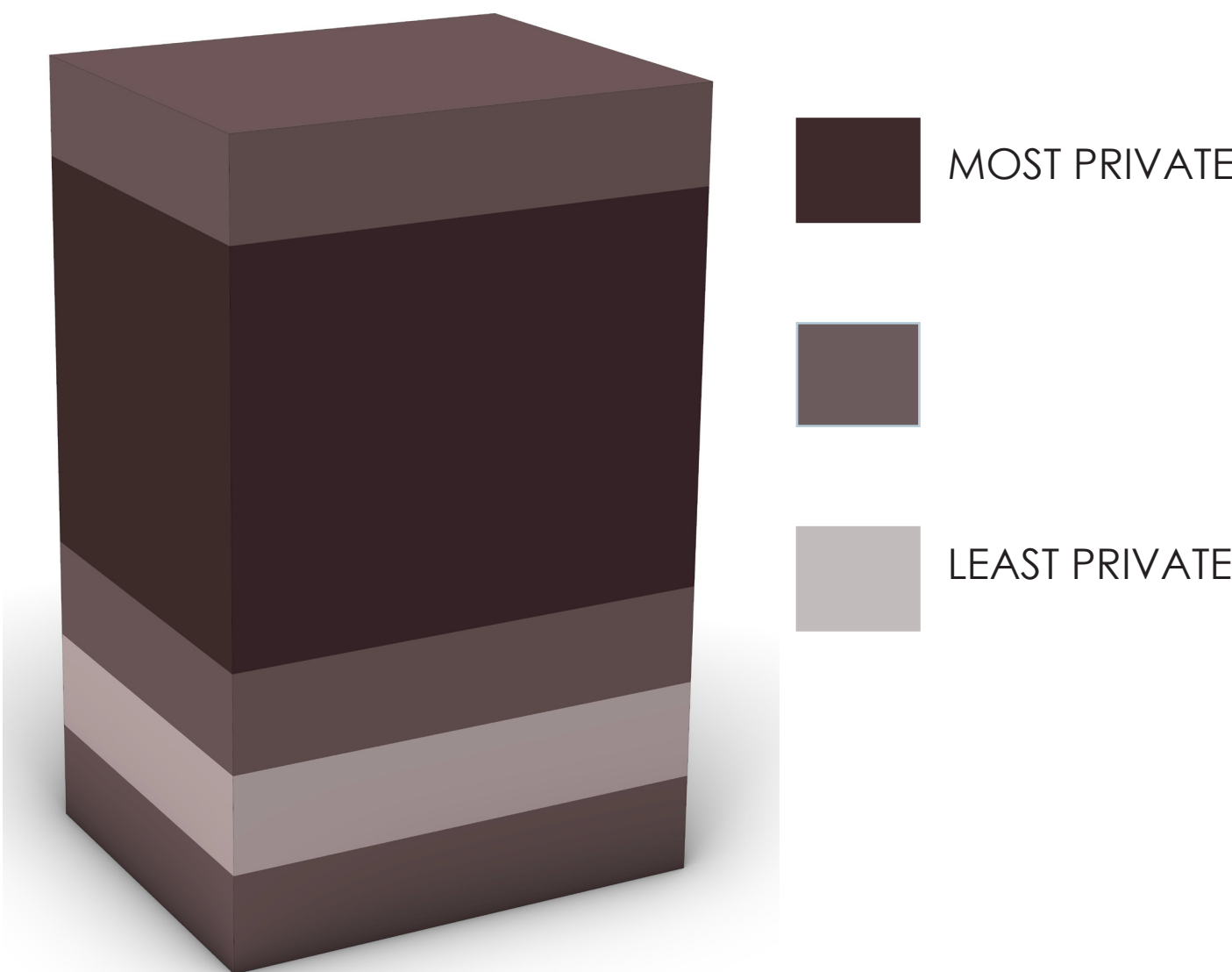
SITE ANALYSIS



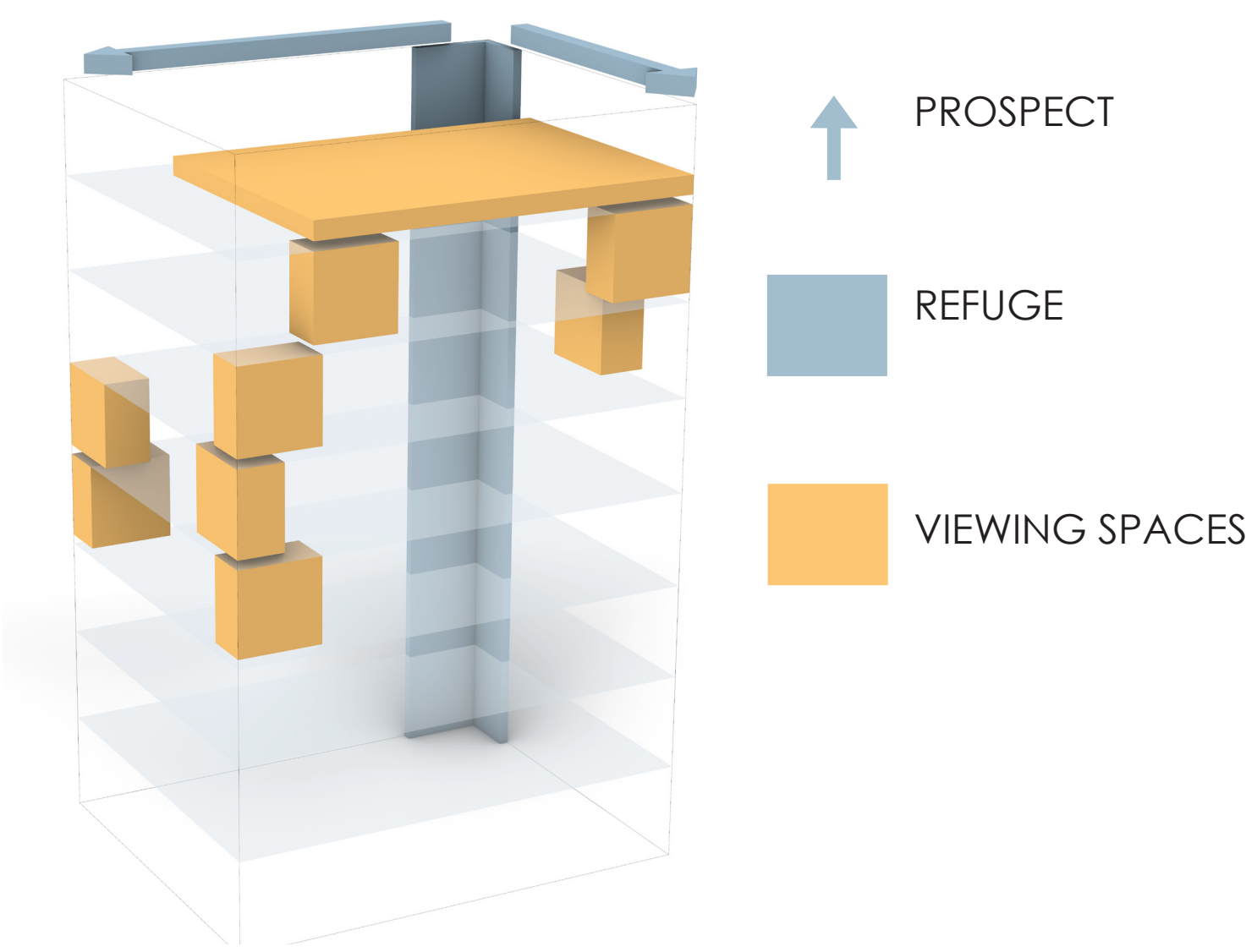
WATER CONSERVATION



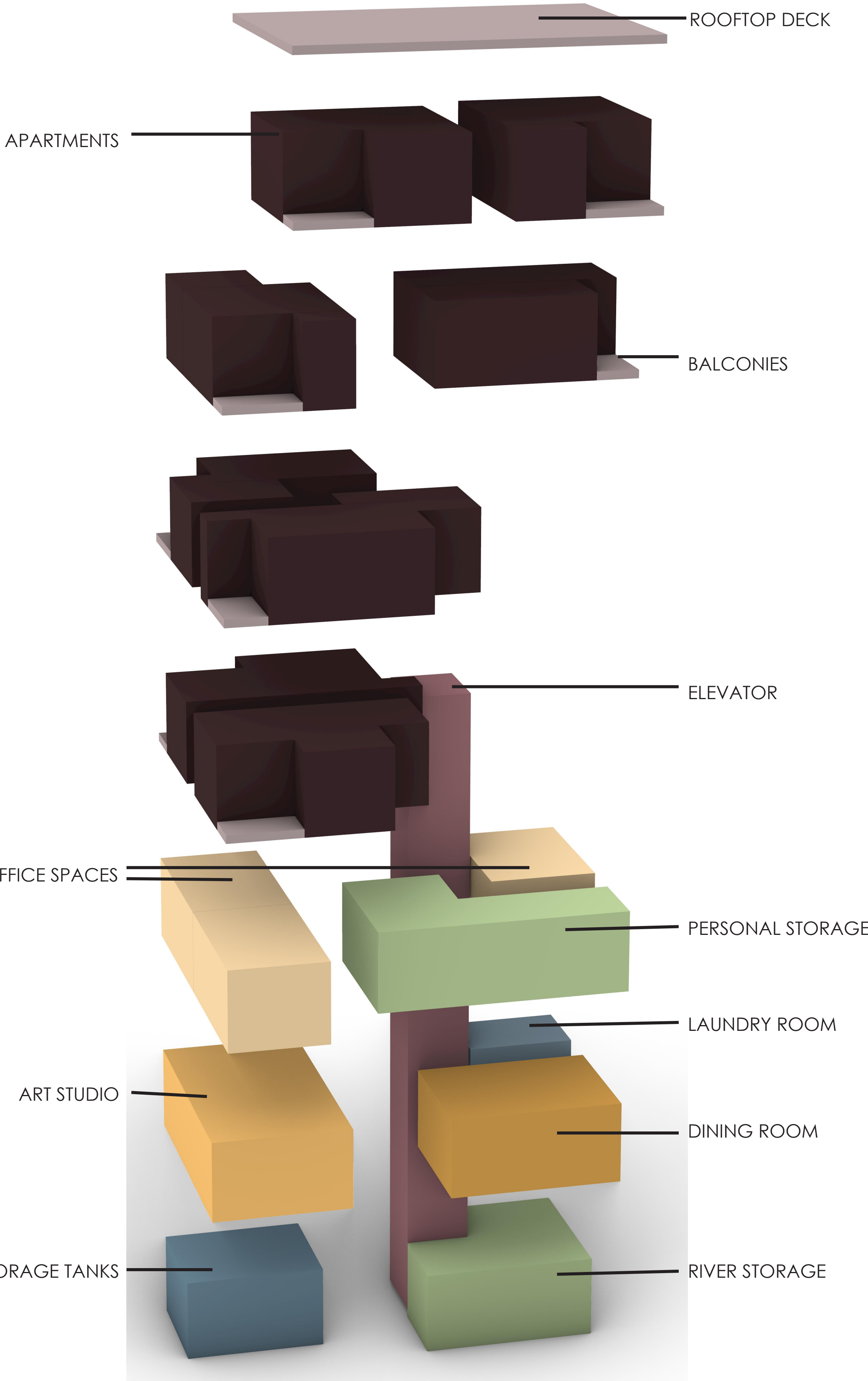
CIRCULATION AND CONNECTION



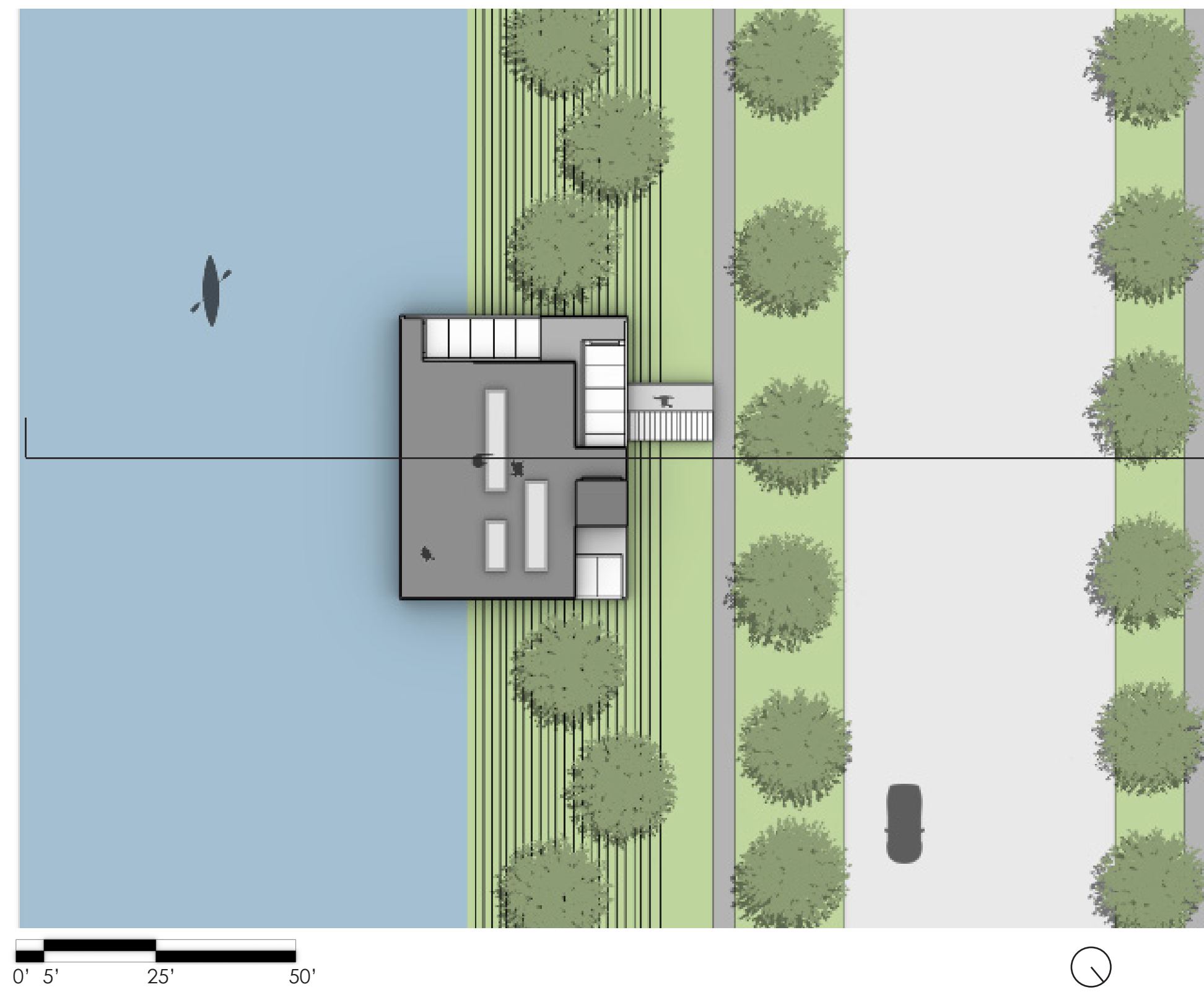
PUBLIC AND PRIVATE SPACES



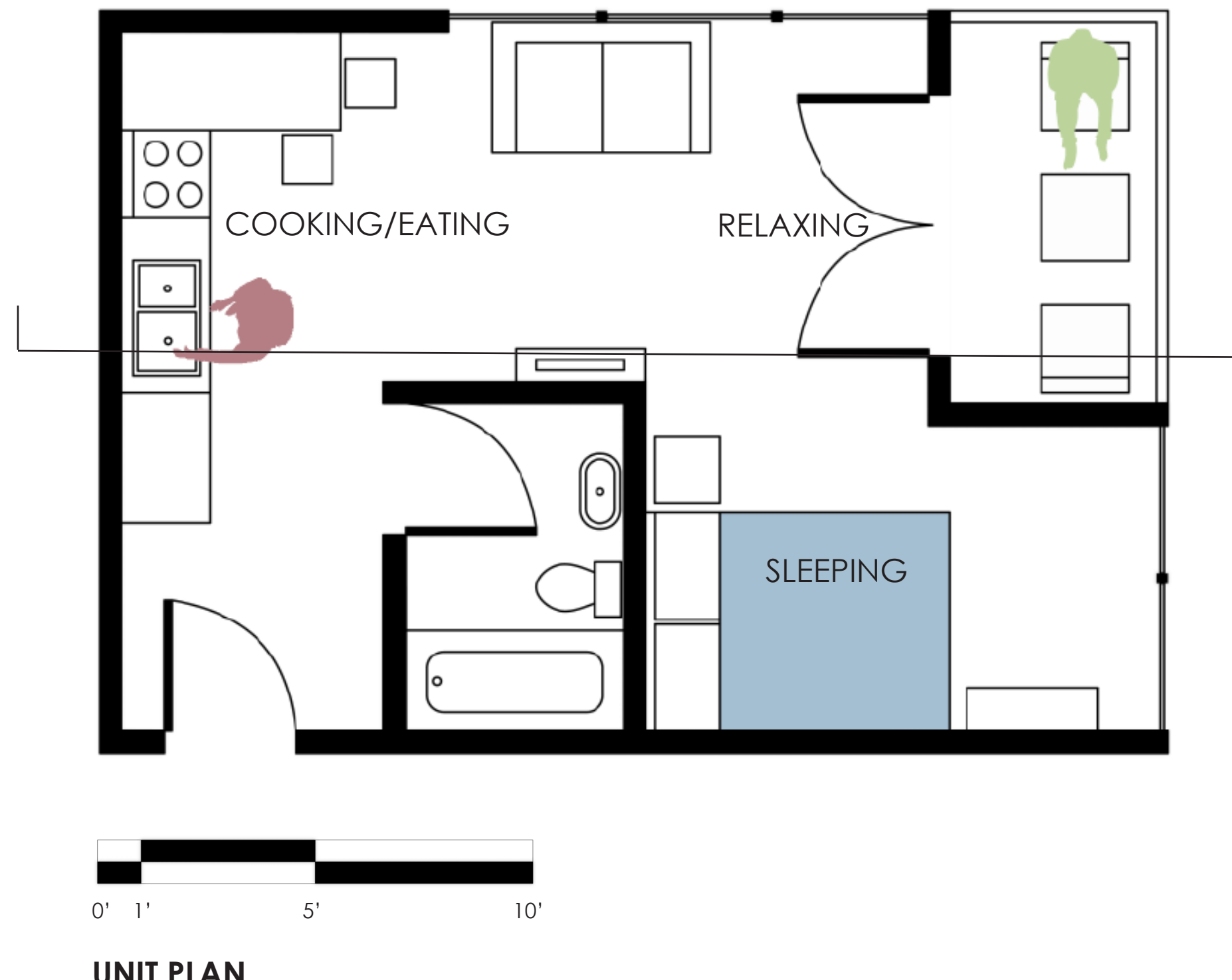
PROSPECT AND REFUGE



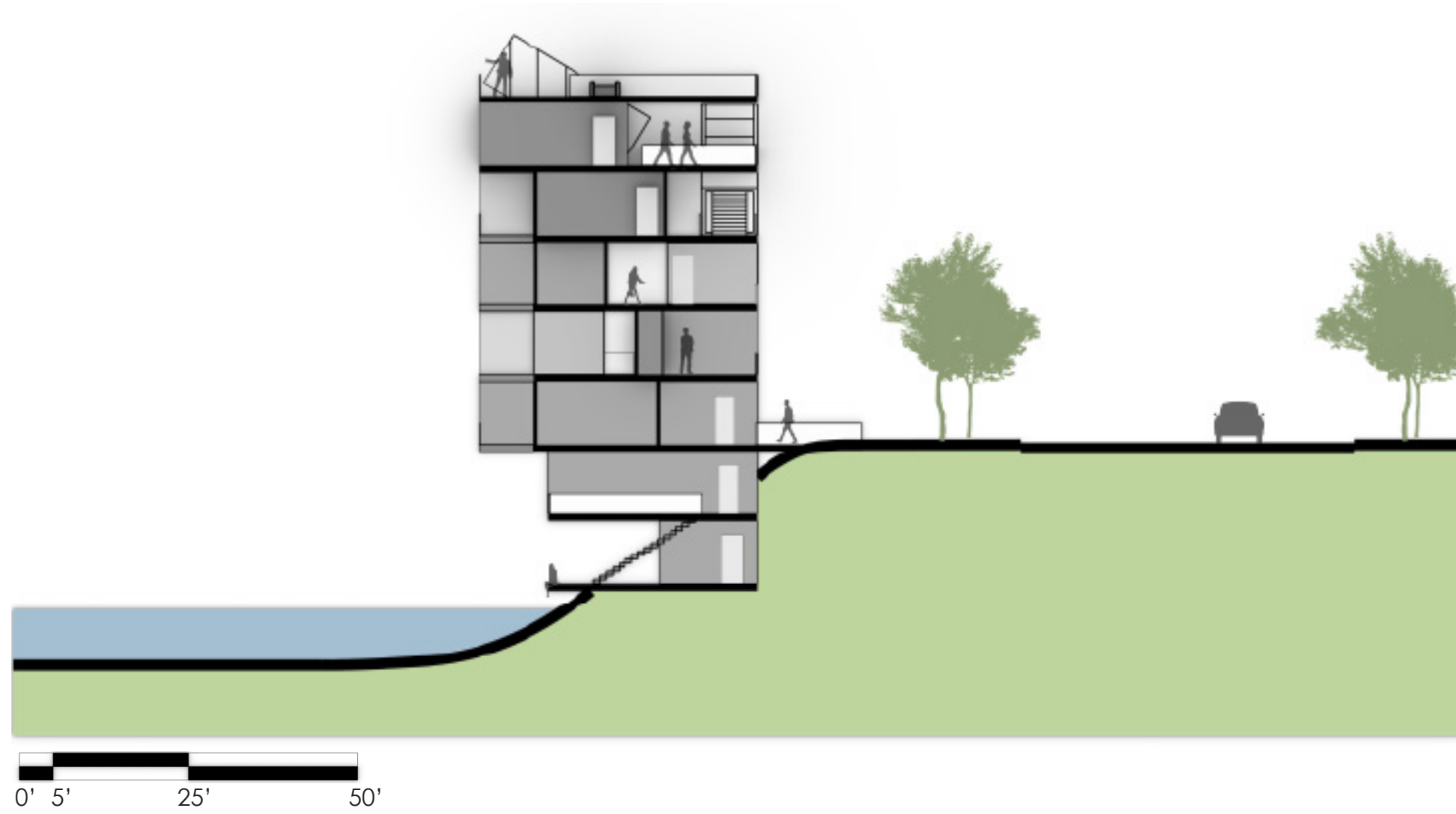
PROGRAM DIAGRAM



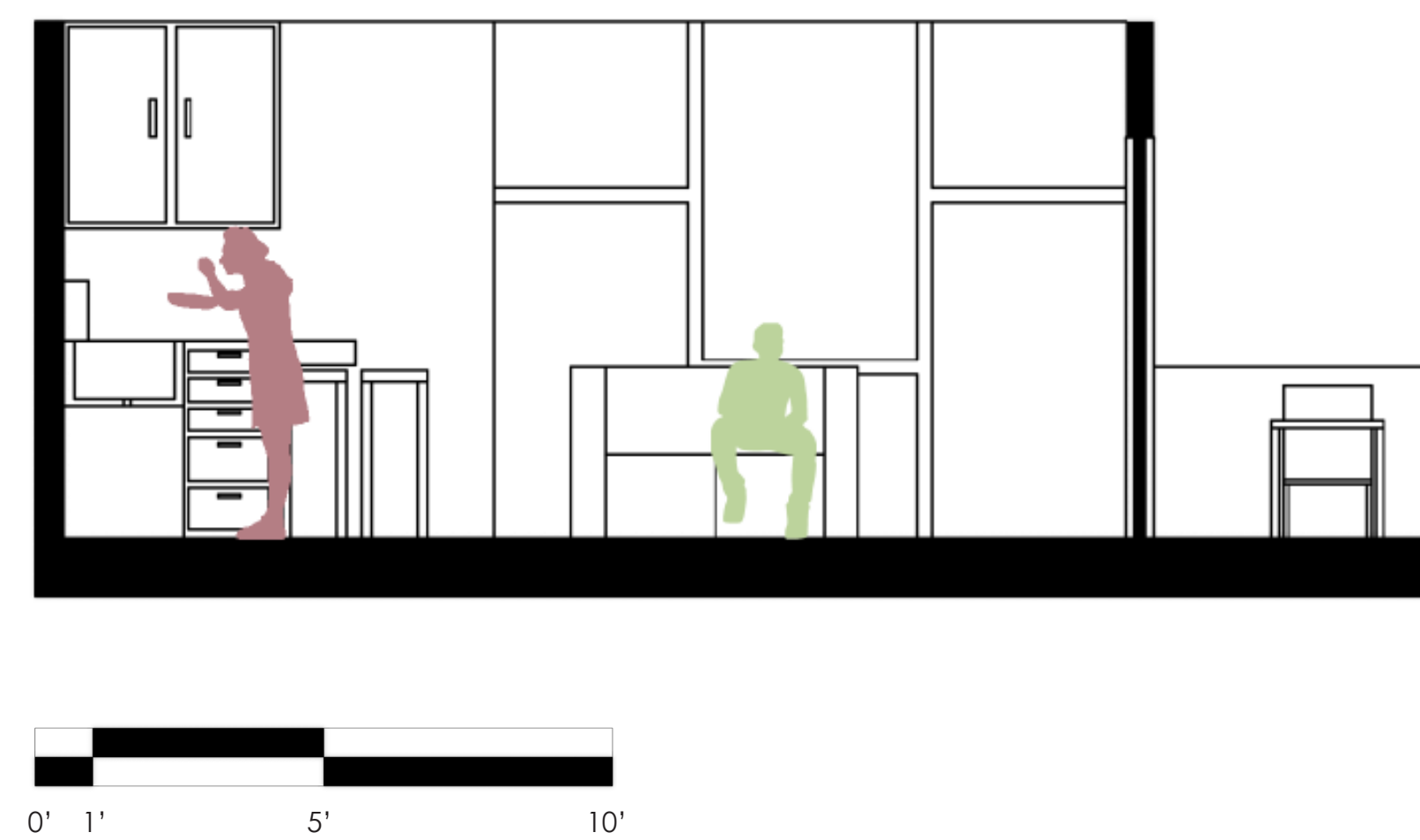
SITE PLAN



UNIT PLAN



SITE SECTION



UNIT SECTION



INTERIOR RENDERING



EXTERIOIR RENDERING