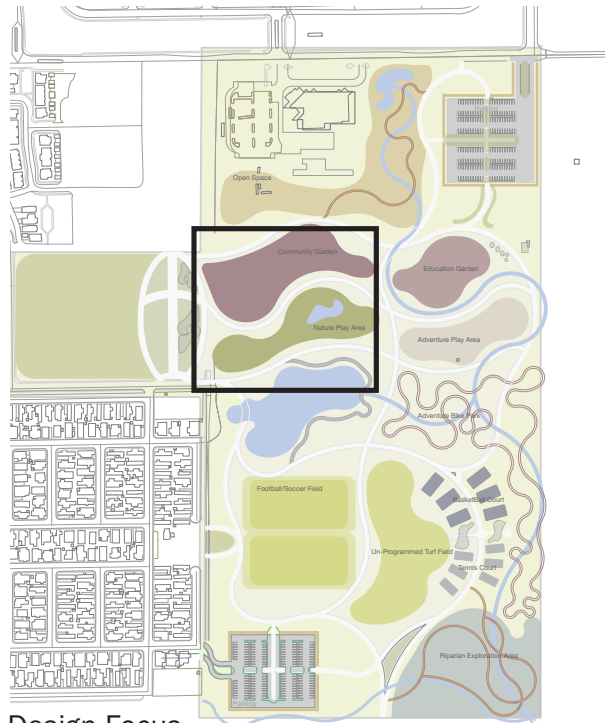


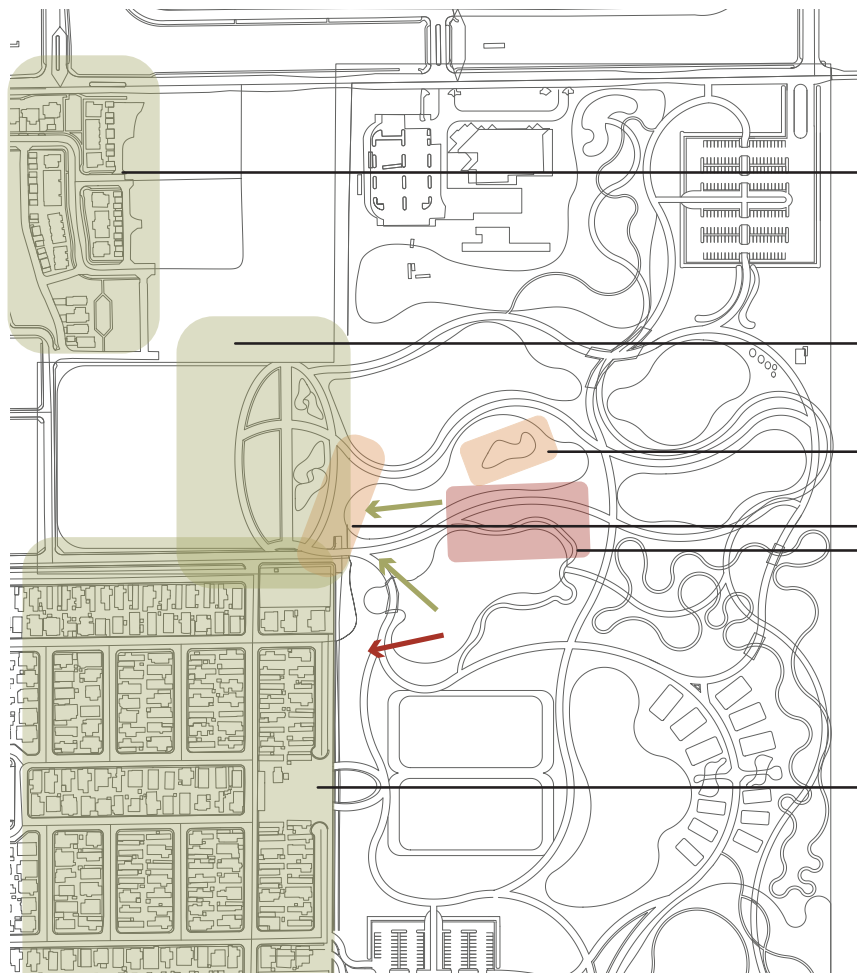
# Unity Community Park: Dual Nature Play

Makenna Karhoff | LAND3100



Design Focus

Dual Nature Play is a space in which there is a balance between **cognitive** and **physical** play. Physical play stems from the adventure and nature play programs within the park, wandering and winding paths, and landform manipulation. Cognitive play can be found in Dual Nature Play with areas of for education on hydrology, pollinators, and native grasses.



- Connection to neighborhood
- Focus on their needs

- Entrance for both neighborhoods
- Make entrance visible and prominent

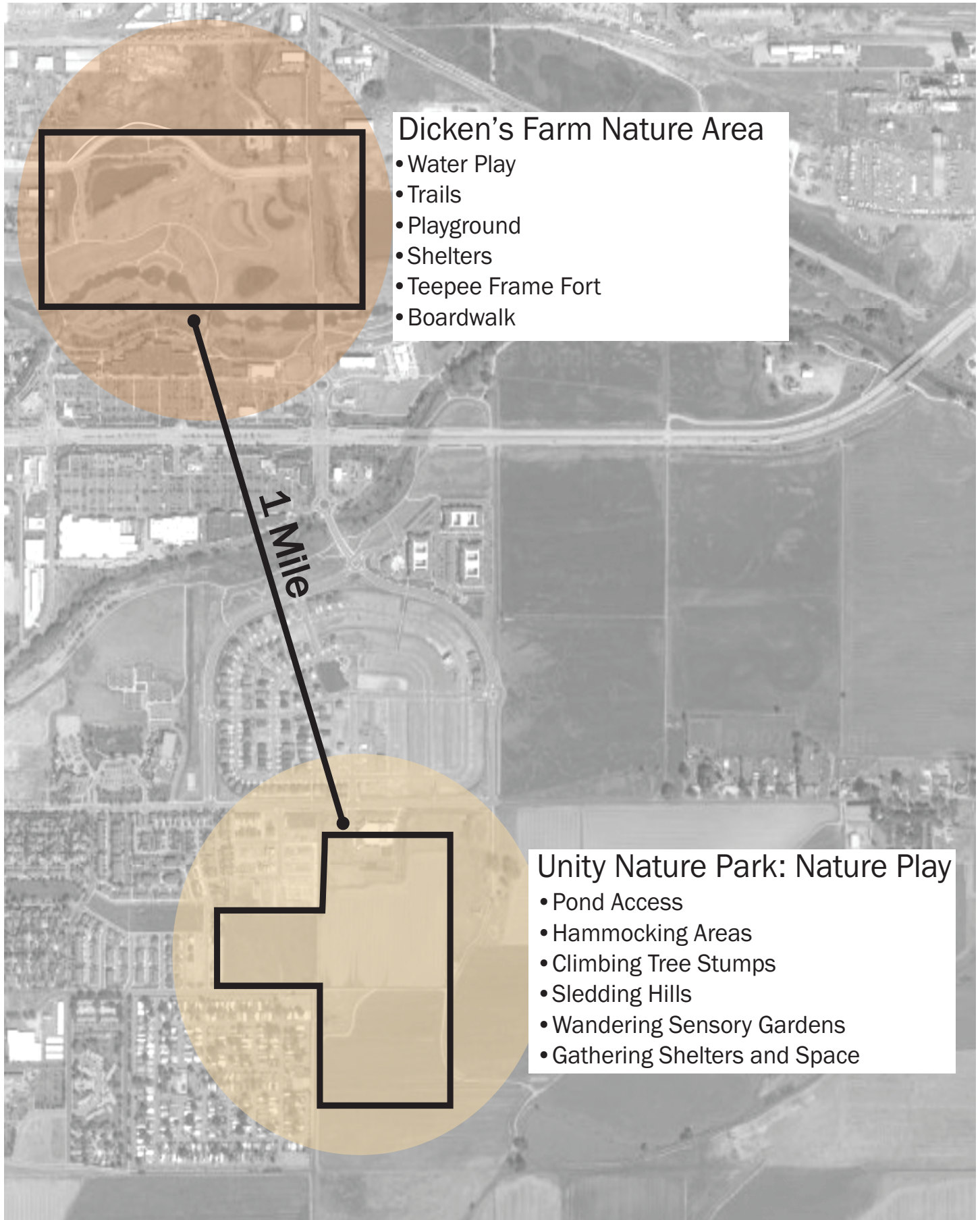
- Green infrastructure?
- Is this a low point in the topography?

- Make buffer smaller? Is this just open space?
- Pond and nature play should interact
- Too much buffer currently and don't have a relationship

- Connection to neighborhood
- Focus on their needs

# Unity Community Park: Dual Nature Play

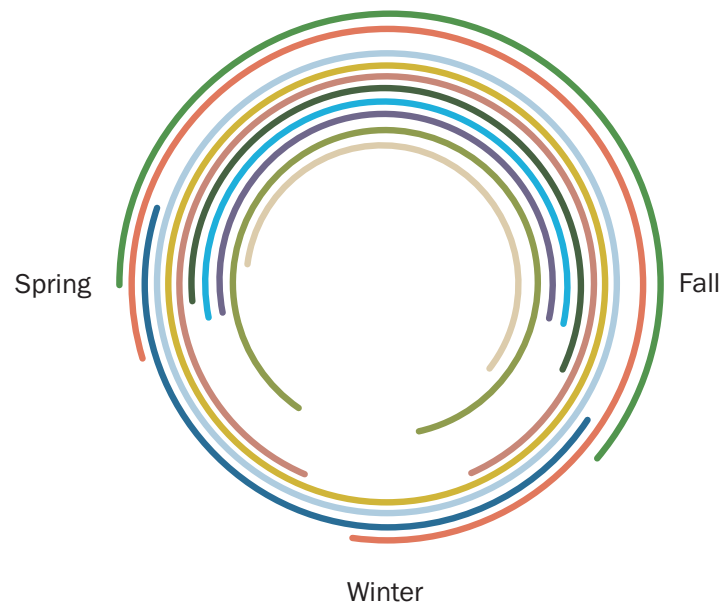
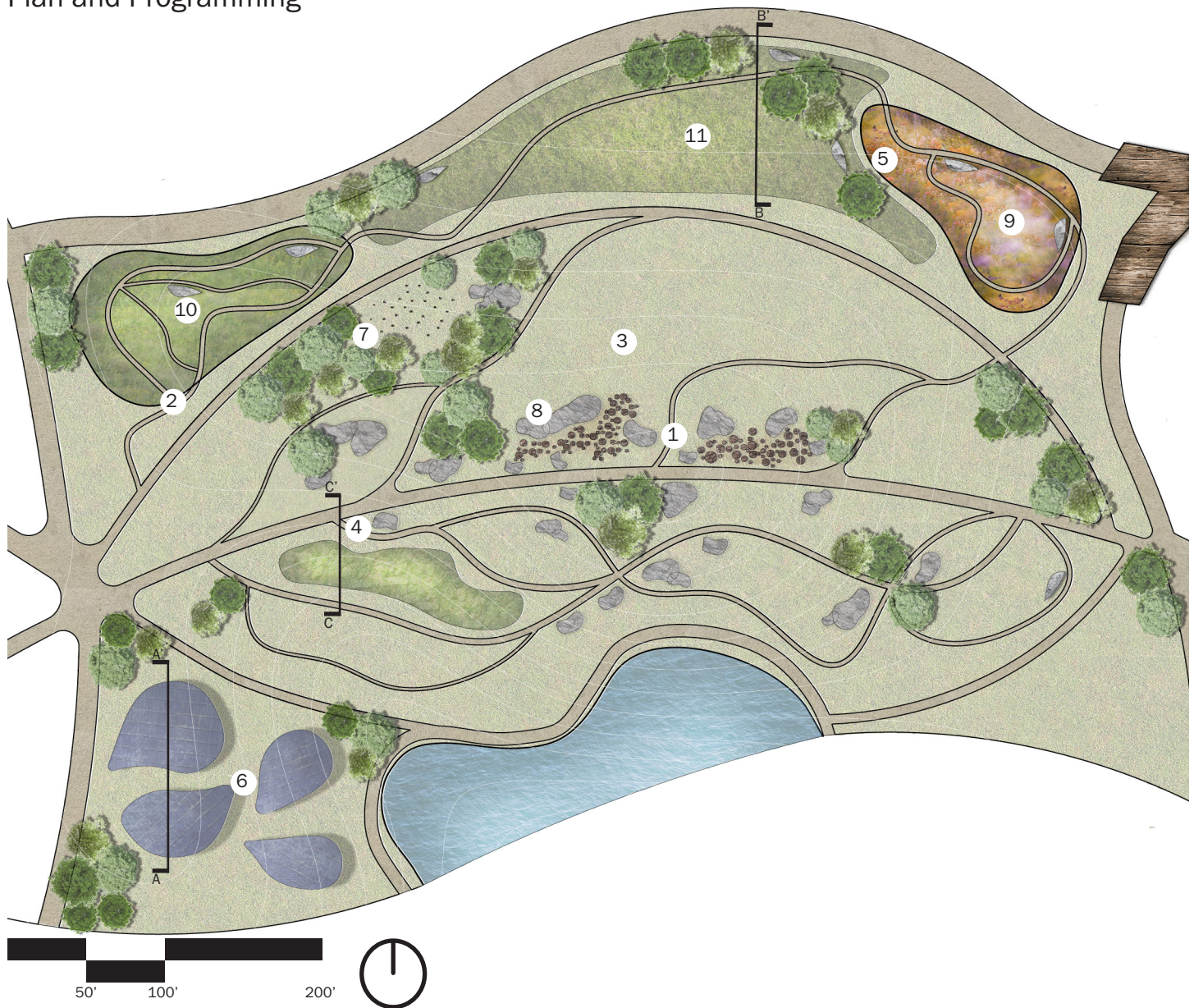
Dicken's Farm Nature Area vs. Unity Nature Park





# Unity Community Park: Dual Nature Play

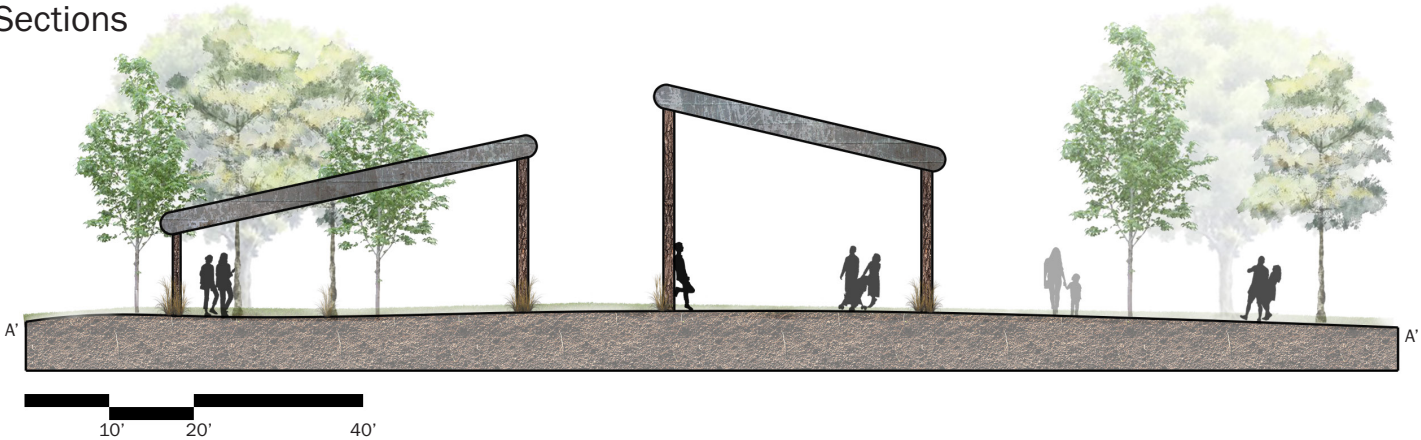
## Plan and Programming



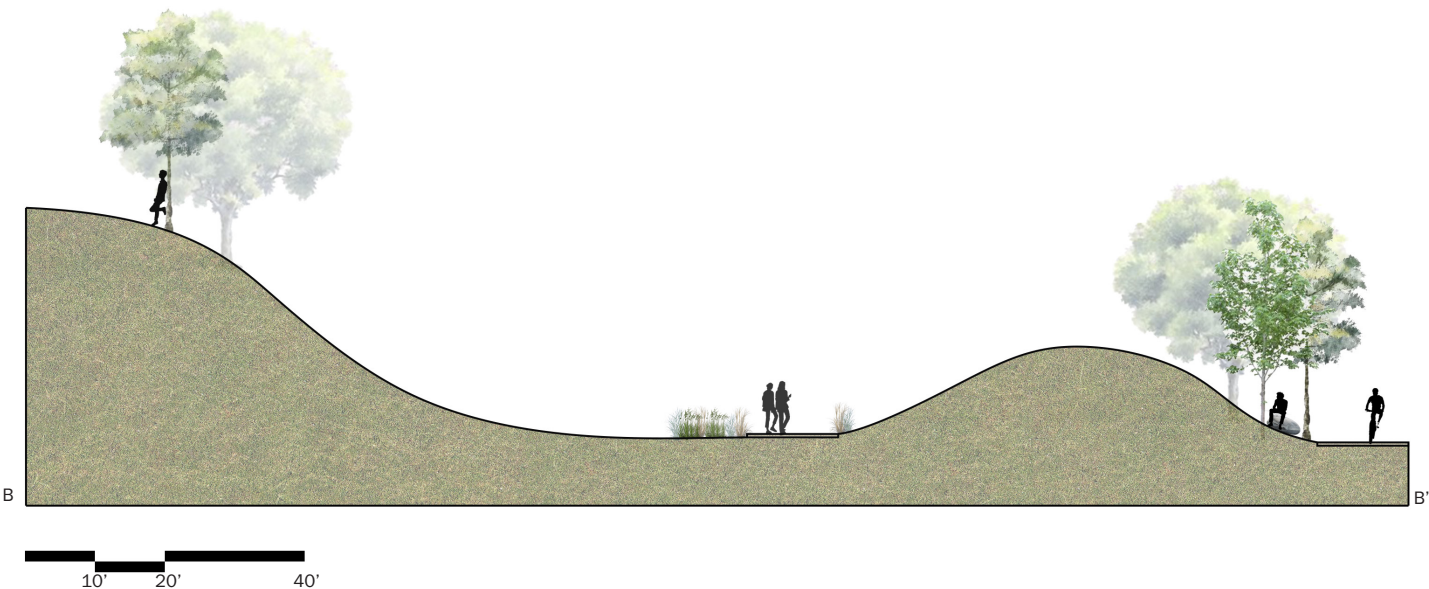
- 1. Log Climbing
- 2. Winding Garden Trail
- 3. Sledding Hill
- 4. Hydrology Education
- 5. Native Planting Education
- 6. Shaded Gathering Space
- 7. Hammocking
- 8. Boulder Climbing
- 9. Short Pollinator Garden
- 10. Tall Native Garden
- 11. Gathering Lawn



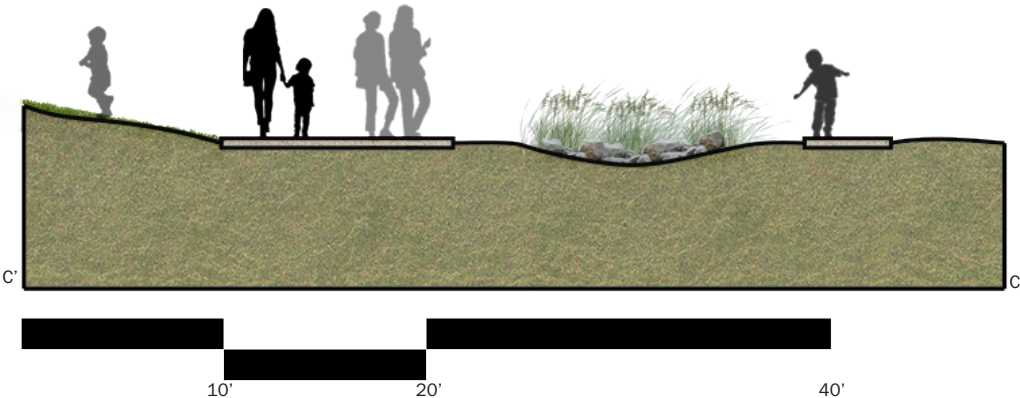
Unity Community Park: Dual Nature Play  
Sections



Section A: Shaded Gathering Space



Section B: Gathering Lawn

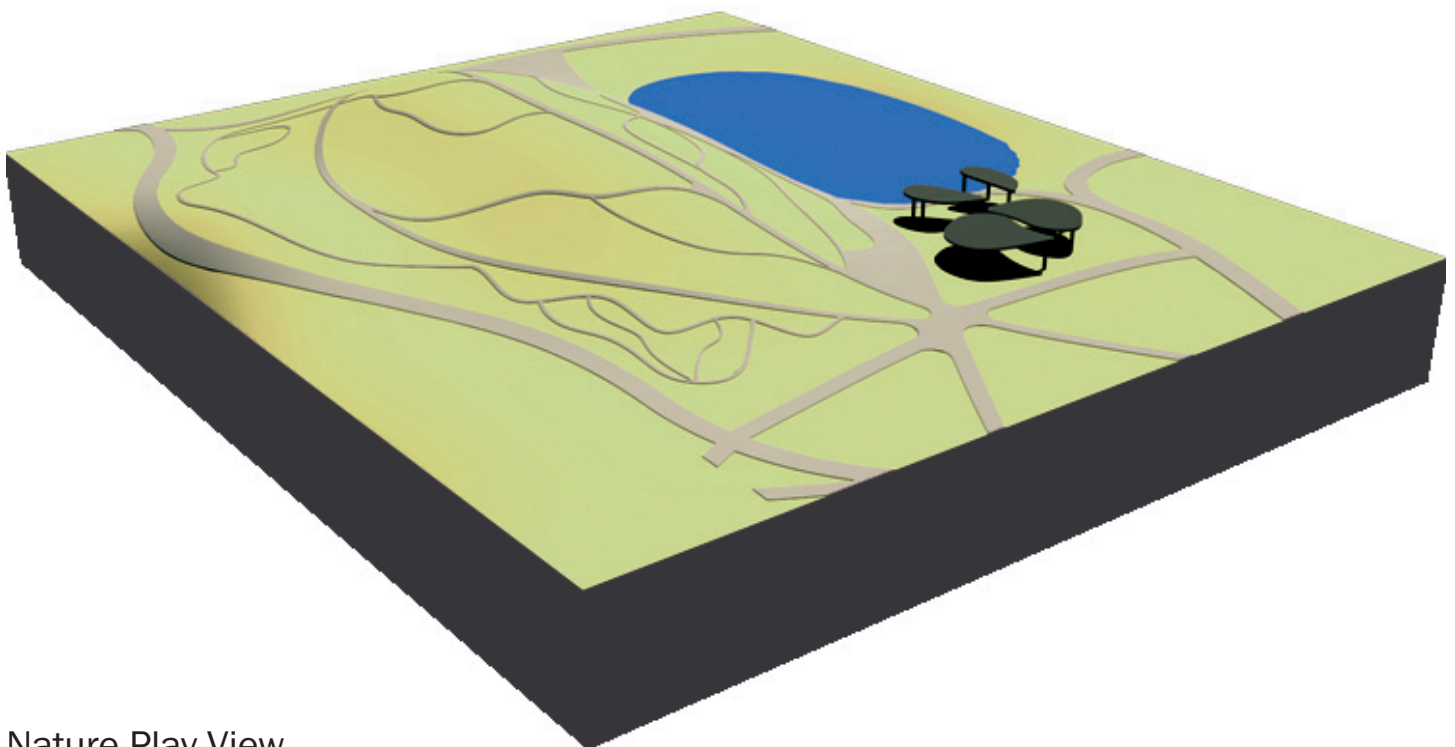
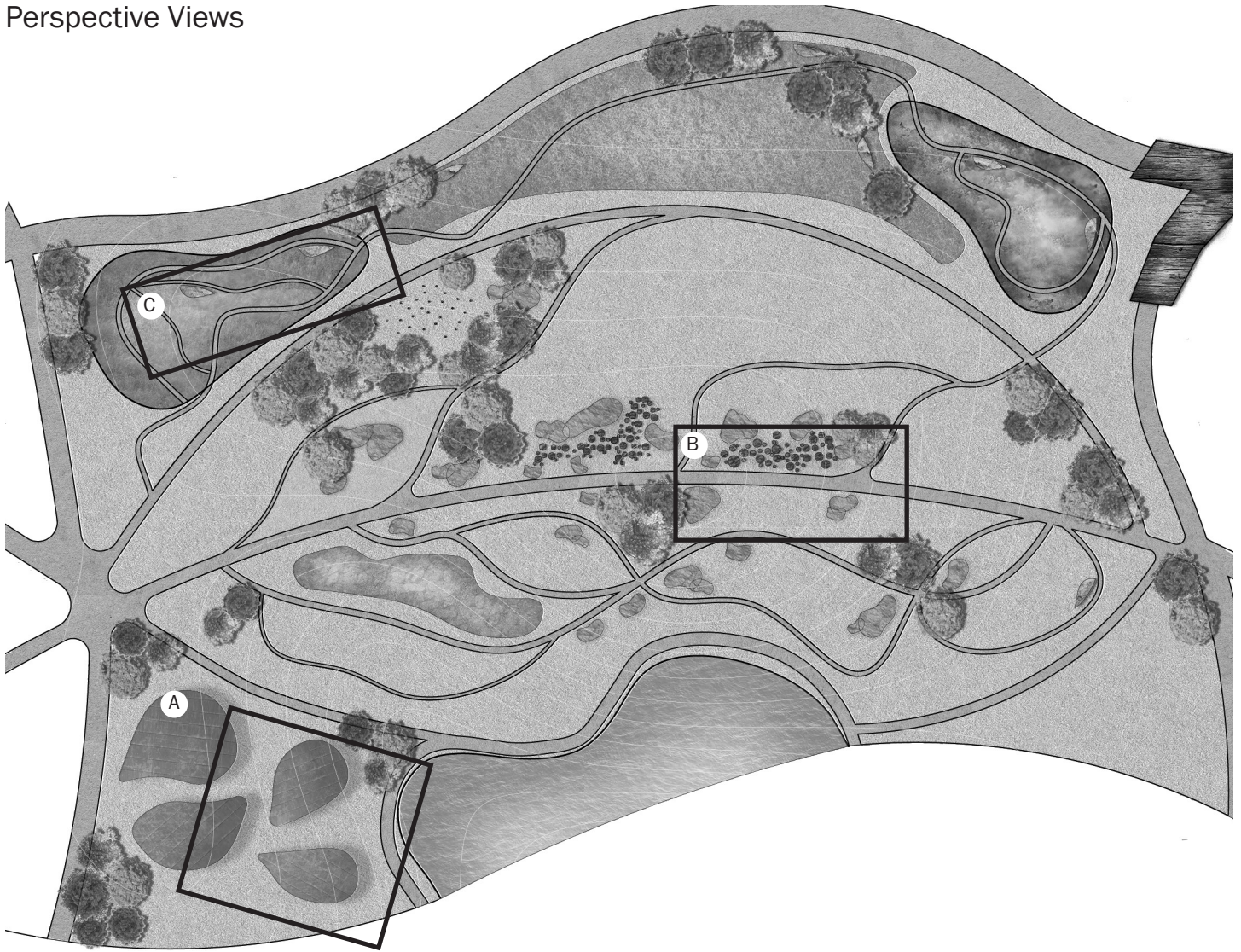


Section C: Rain Garden and Hydrology Education



# Unity Community Park: Dual Nature Play

## Perspective Views



Nature Play View



# Unity Community Park: Dual Nature Play

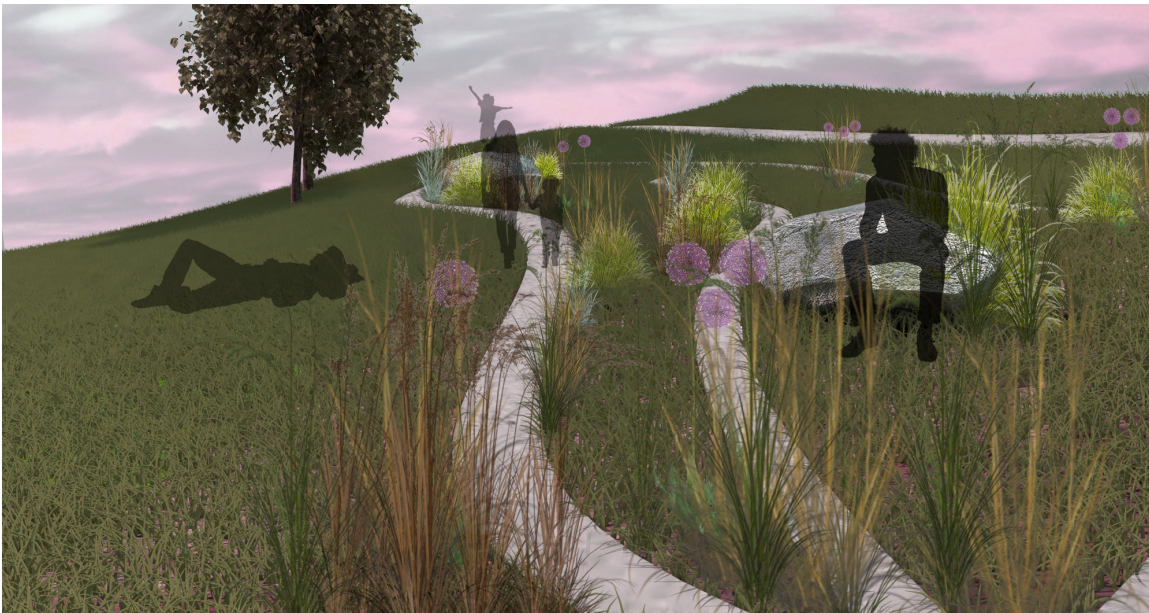
## Perspective Views



A: Shaded Gathering Space and Pond Access



B: Log Climbing Nature Play

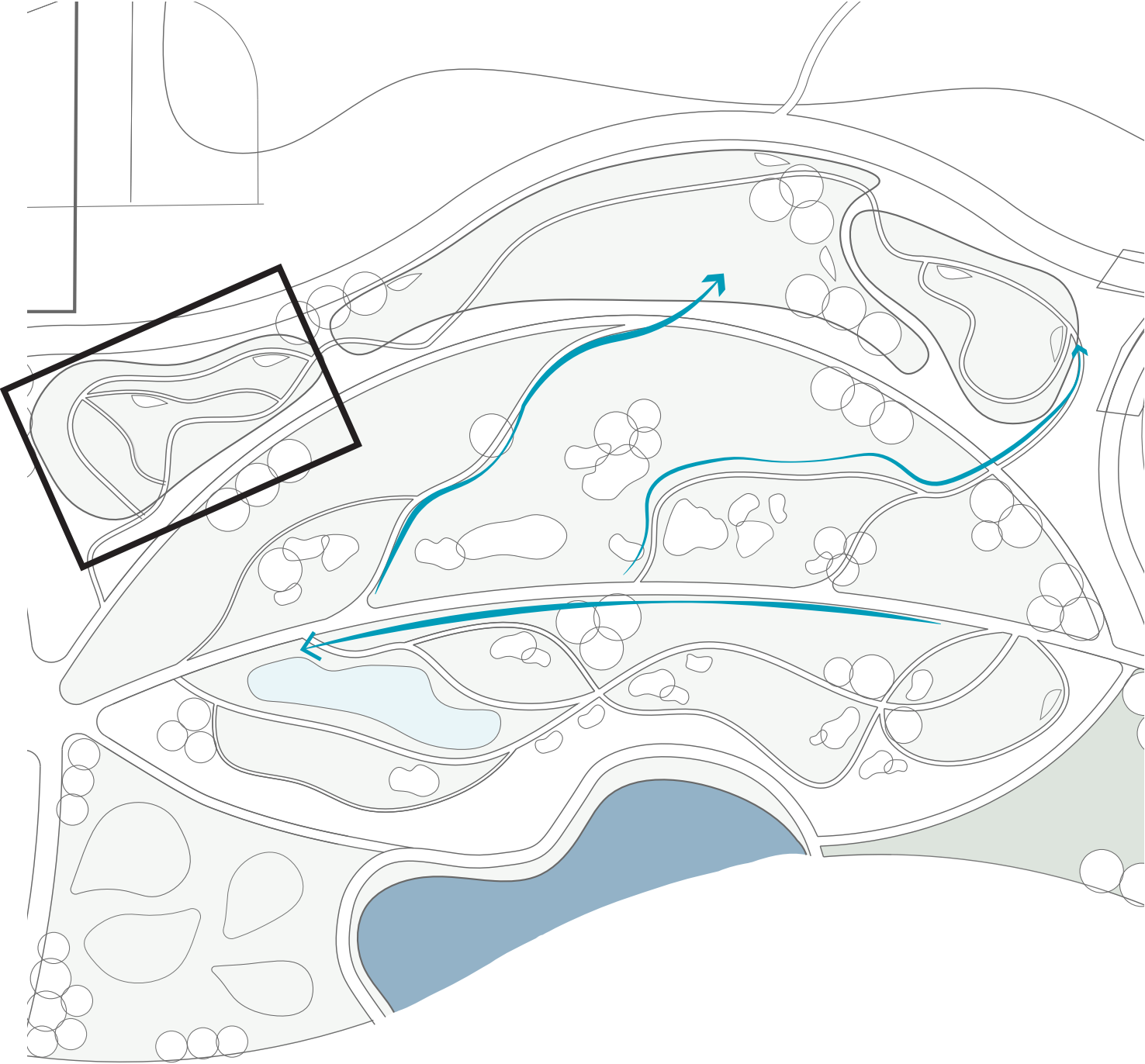


C: Tall Grass Sensory Garden



# Unity Community Park: Dual Nature Play

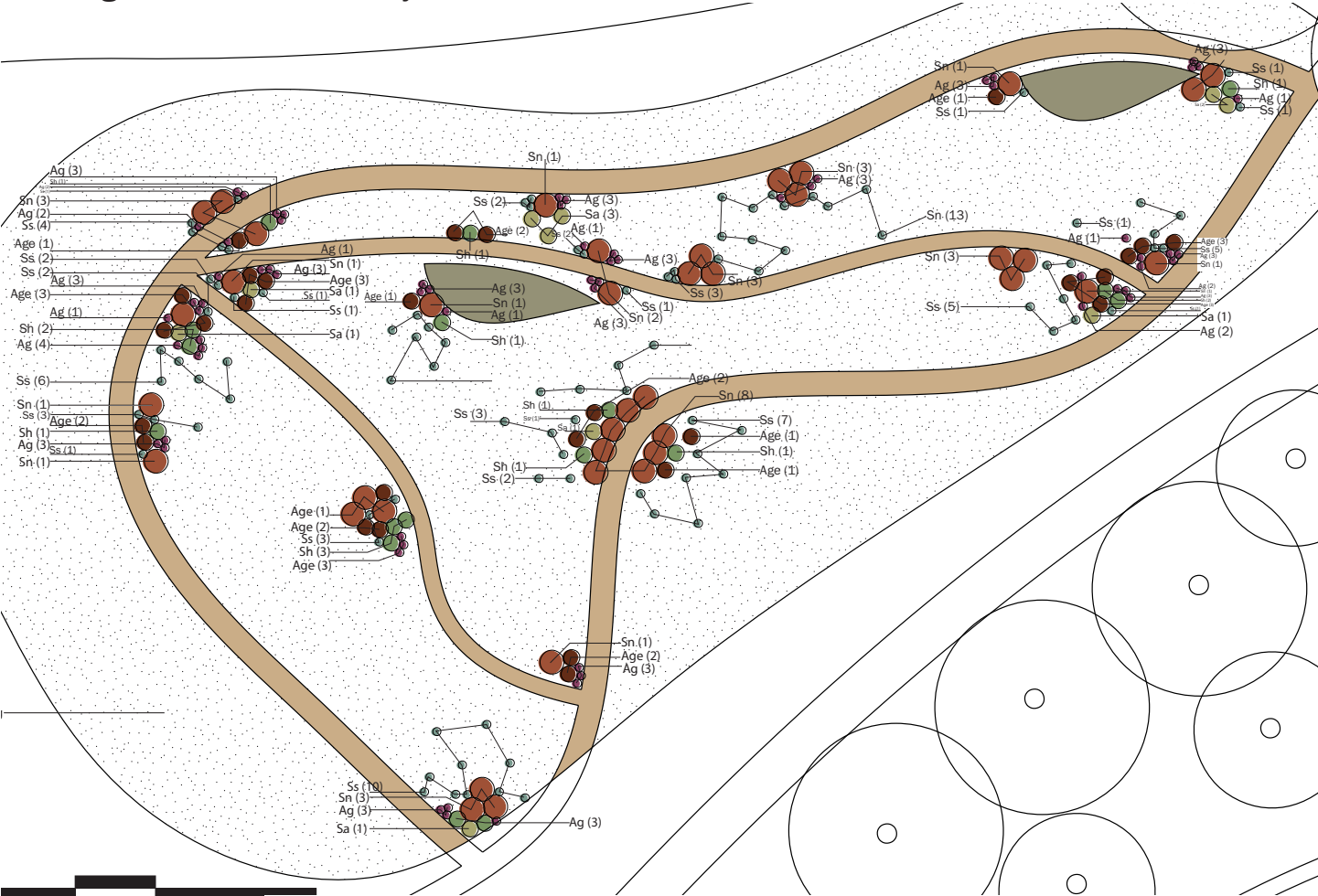
## Green Infrastructure Diagram



- Permeable Surfaces
- Rain Garden
- Pond
- Swales

# Unity Community Park: Dual Nature Play

## Planting Plan for Tall Sensory Garden



Area	Quantity	Abbreviation	Latin Name	Common Name	Size (H x W)	Comments
Ornamental Grass Garden	26	Age	Andropogon Gerardii	Big Bluestem	6-8' x 2-3'	<ul style="list-style-type: none"> <li>• Rhizomatic</li> <li>• Plant in Fall</li> </ul>
	67	Ag	Allium giganteum	Ornamental Onion	3-5' x 1-2'	
	32.6 lbs.	Bg	Bouteloua gracilis	Blue Grama	6-24" x 6-12"	
	10	Sa	Sporobolus airoides	Alkali Sacaton Grass	4' x 2'	
	17	Sh	Sporobolus heterolepis	Prairie Dropseed	2' x 2'	
	40	Sn	Sorghastrum nutans	(Yellow) Indian Grass	3-8' x 2-3'	
	97	Ss	Schizachyrium scoparium	Little Bluestem	2-4' x 1-2'	

The nature play aspect with the winding paths create a sense of adventure as children move through the space which creates physical play. The interaction with the garden and vegetation is educational and directly plays with a visitor’s cognition. The garden utilizes scale with the tall grasses to create individualized spaces throughout the garden. This garden is dually adventure filled.

