

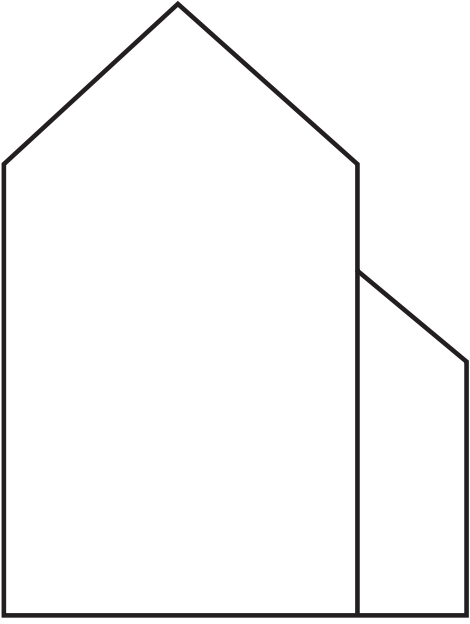
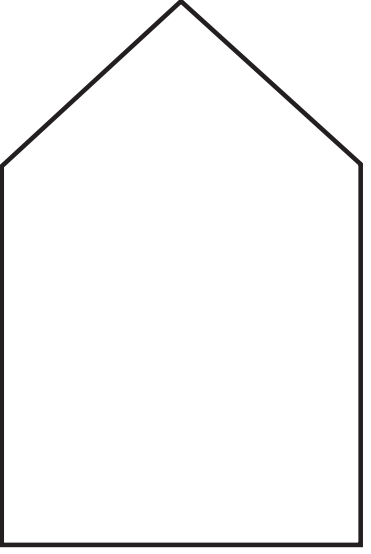
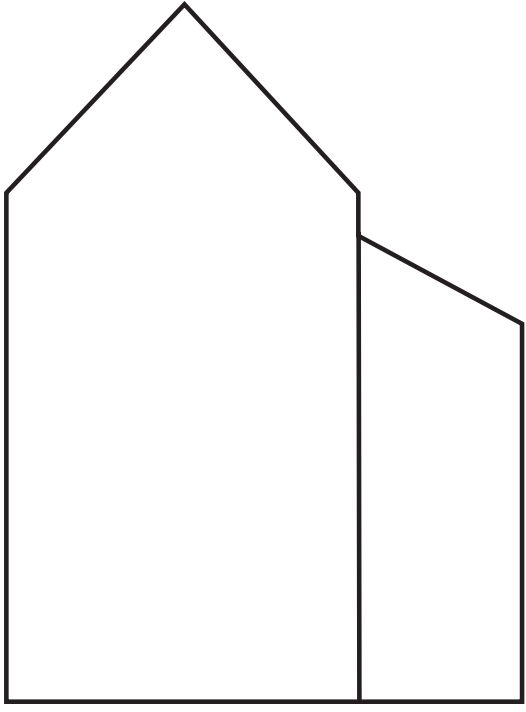
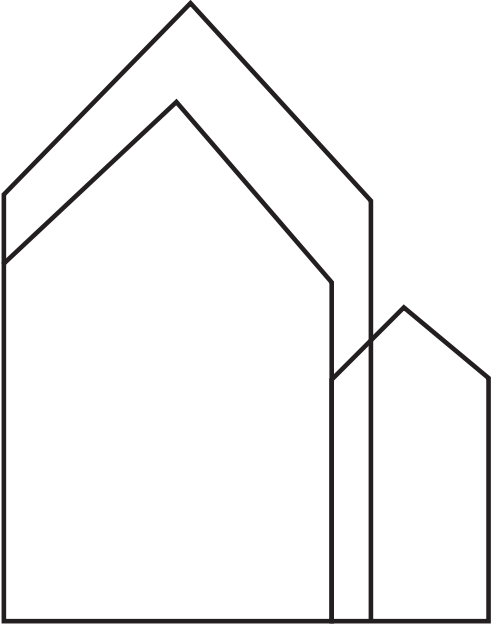
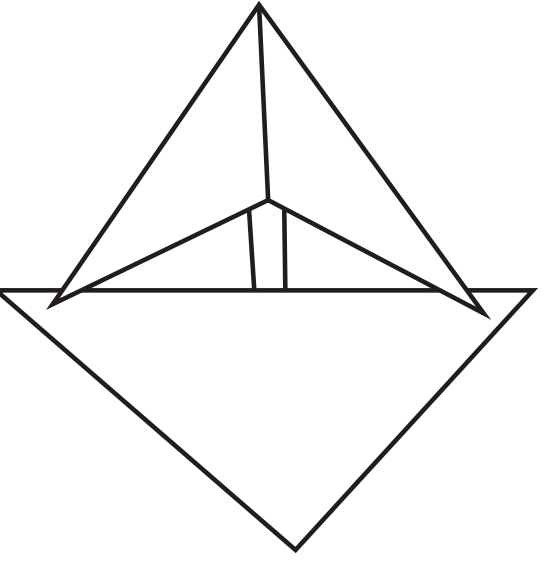
Nested Refuge

Sophie Kollar: Nick Alacano

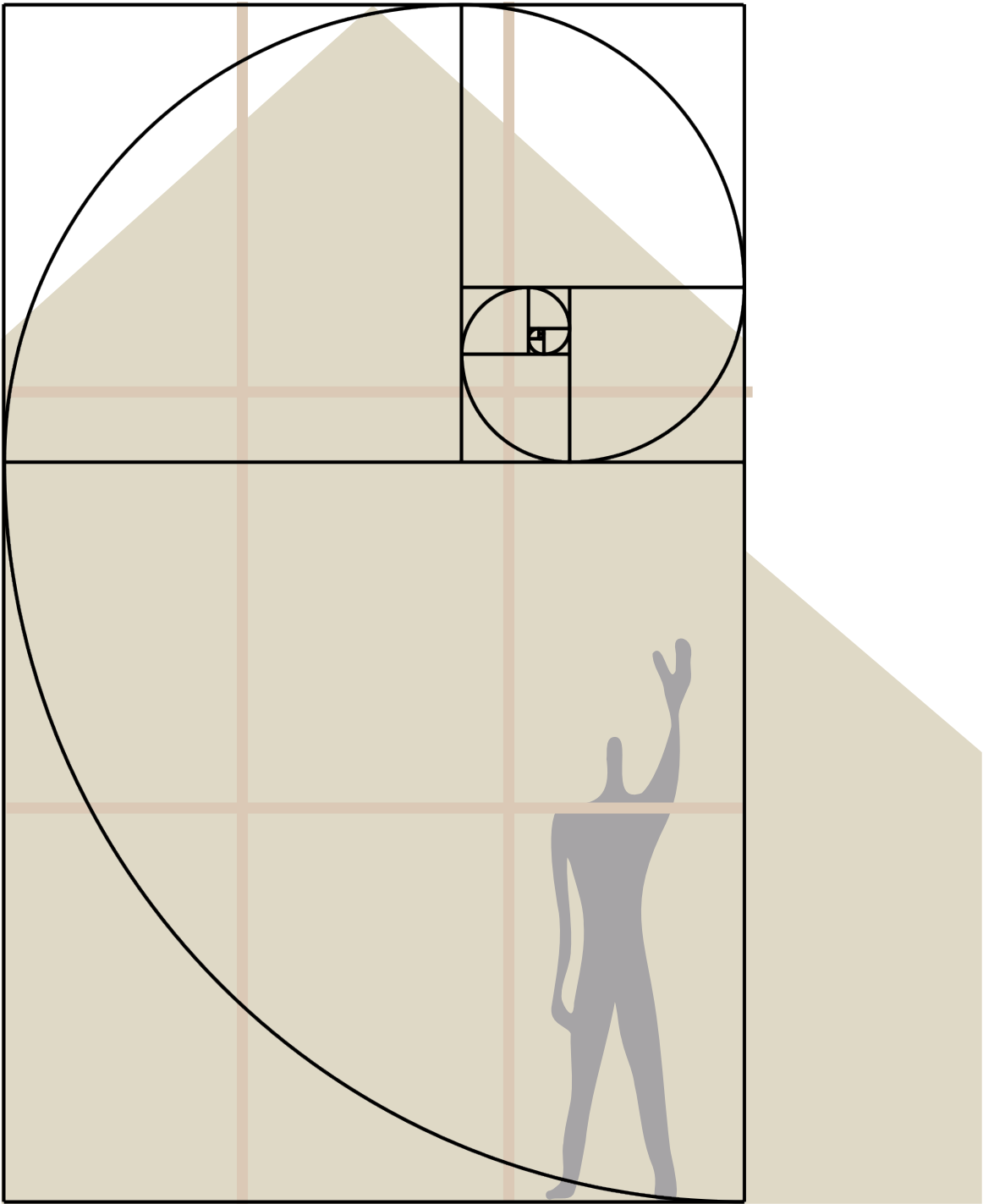
The 'Nested Refuge' offers Nick both structural and emotional reprieve from the burdens of modern life. Inspired by the writings of Simon Unwin, the space alludes to the most basic geometries of a rudimentary and recognizable house. Thus formed by walls operating as barriers, and a simple roof.

Serving as the impetus for this design, the Fibonacci Sequence and the Rule of thirds guided the discourse of the design; directing the study to examine the dynamic relationships between form and the hierarchy of primary and secondary spaces. Predicated by Nick's six five frame, the design also utilizes Le Corbusier's 'Modular Man' theory to integrate anthropometric scale to further inform the proportions of the space, and in turn how Nick will interact within the space.

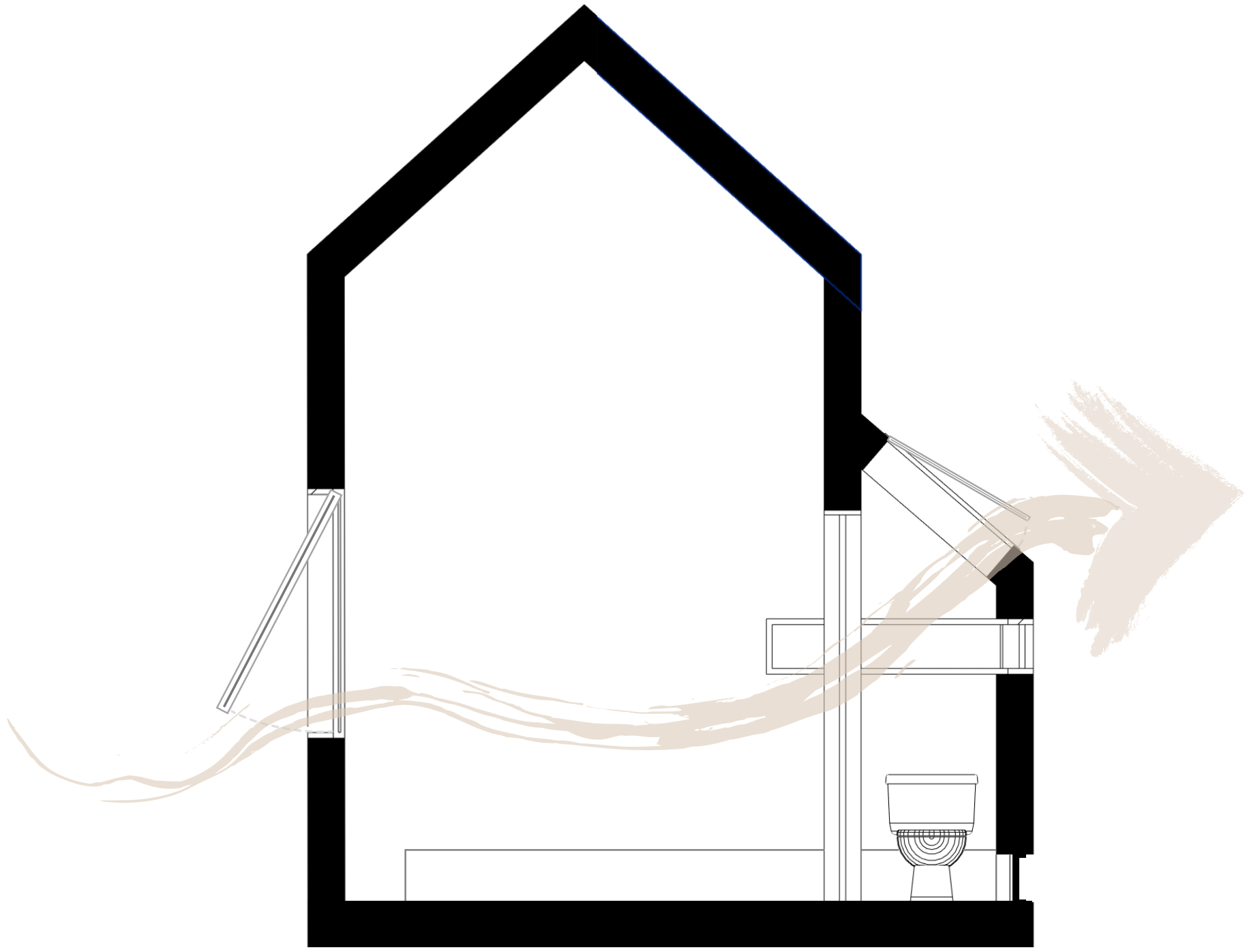
The space seemingly rises from the ground, formed by overtly geometric forms. In their austerity they sit nested within each other, ergo establishing a retreat from the outside. This retreat is meant to be used as a resting place, a space in which to pursue art, strengthen one's physical self, and most importantly to reconvene with oneself.



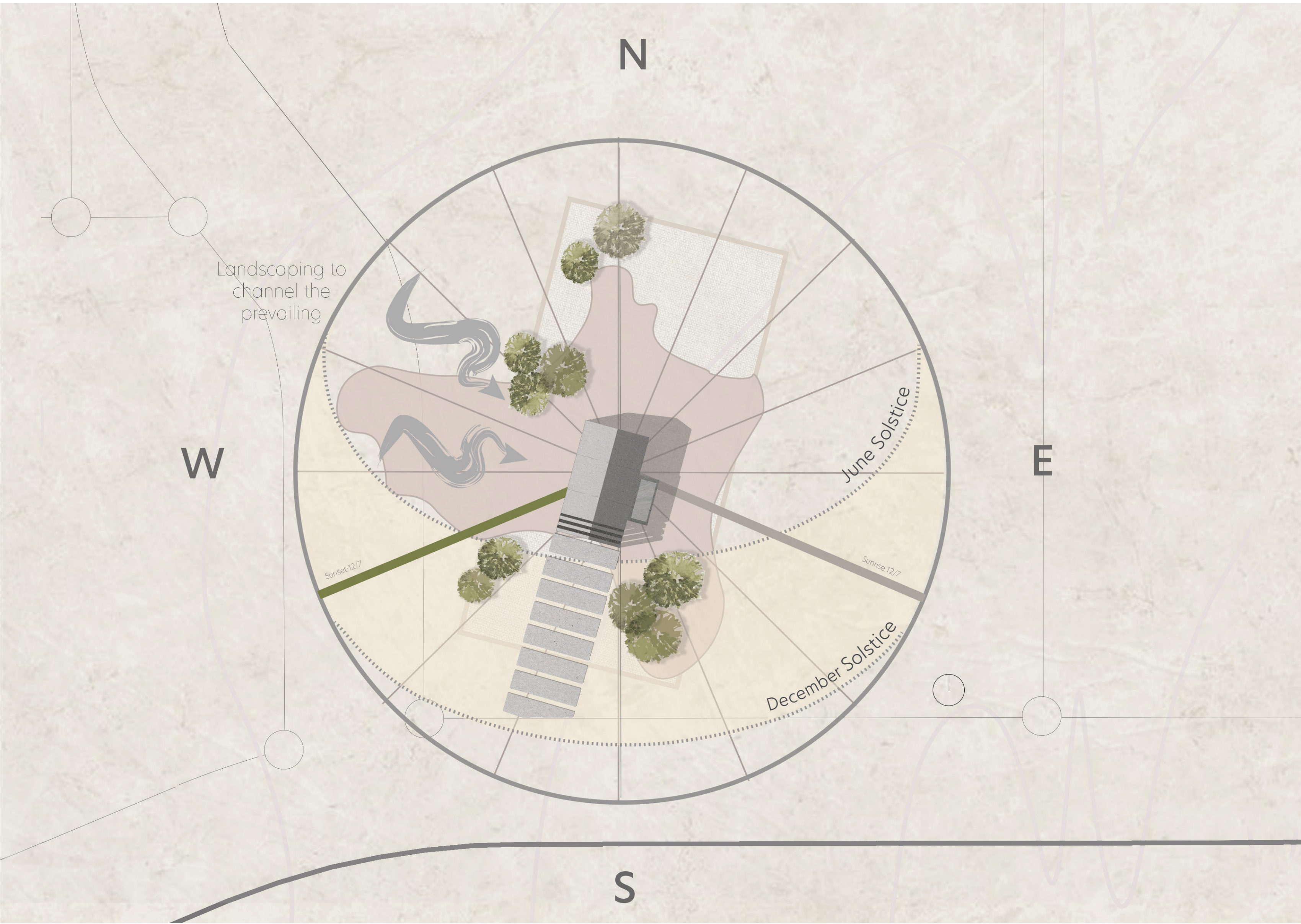
Progress Diagram



Form Inspiration Diagram



Passive Design Diagram



Site Diagram

