

Intent 

Create Warmth

Access to Light

Central Gathering

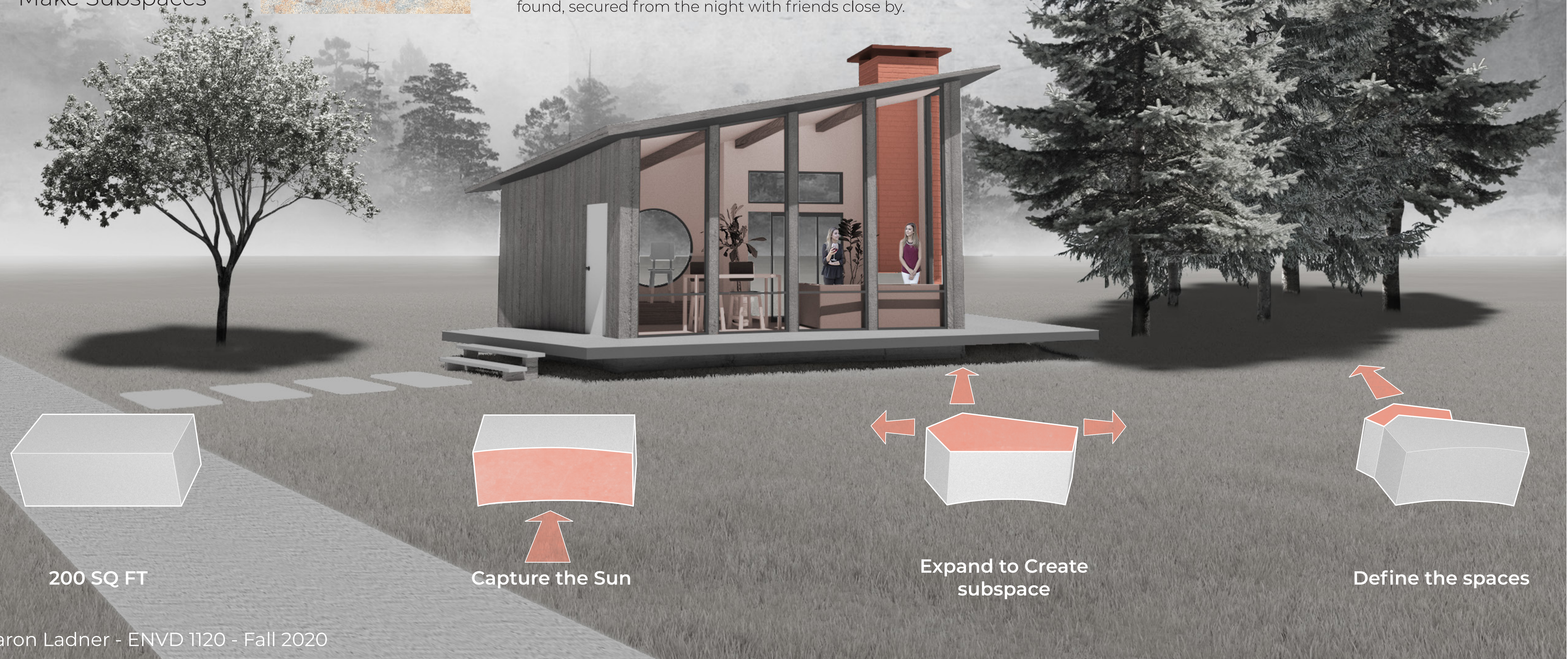
Make Subspaces



# Retreat Together

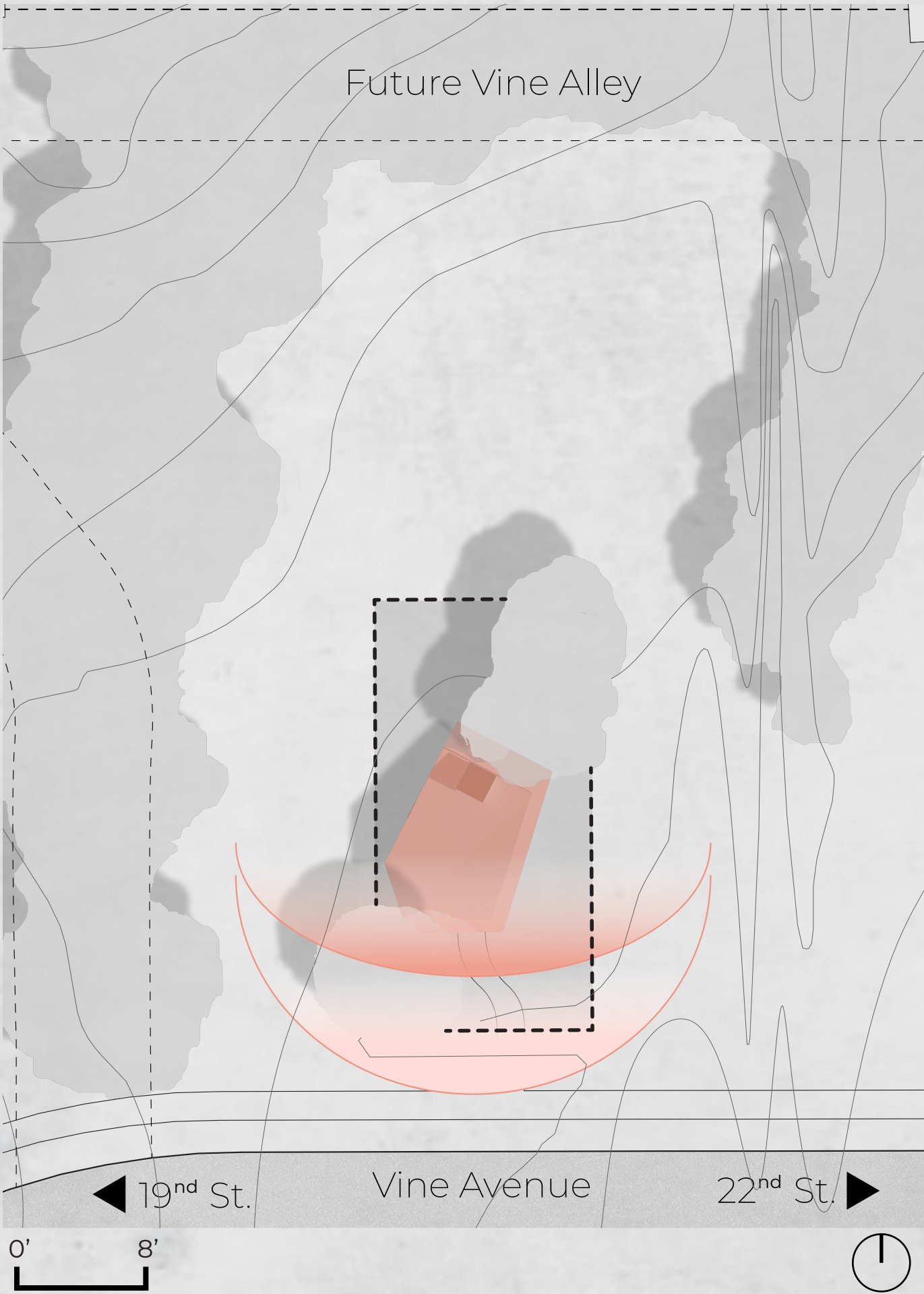
Architect: Aaron Ladner Client: Zoe Beauchamp

For Zoe a retreat spent alone isn't a retreat at all. The compelling force at the center of this retreat is the desire to gather. Coffee, tea, and hot chocolate is shared over long talks with friends. The warm months are spent outside in the crisp mountain air. During the evening the lights come down to surround everyone with soft warm candle light. Offsetting the centripetal force to gather are the reminders of what is past the walls of the retreat. Plants of all kinds fill every space with a sense of both comfort and adventure. Massive portal windows create the perfect space to observe and record in all the most creative ways. Reminders of home and family can be felt through the smells of lavender and lilac, filling the retreat with inspirational creative energy. At the end of the day no stress can be found, secured from the night with friends close by.

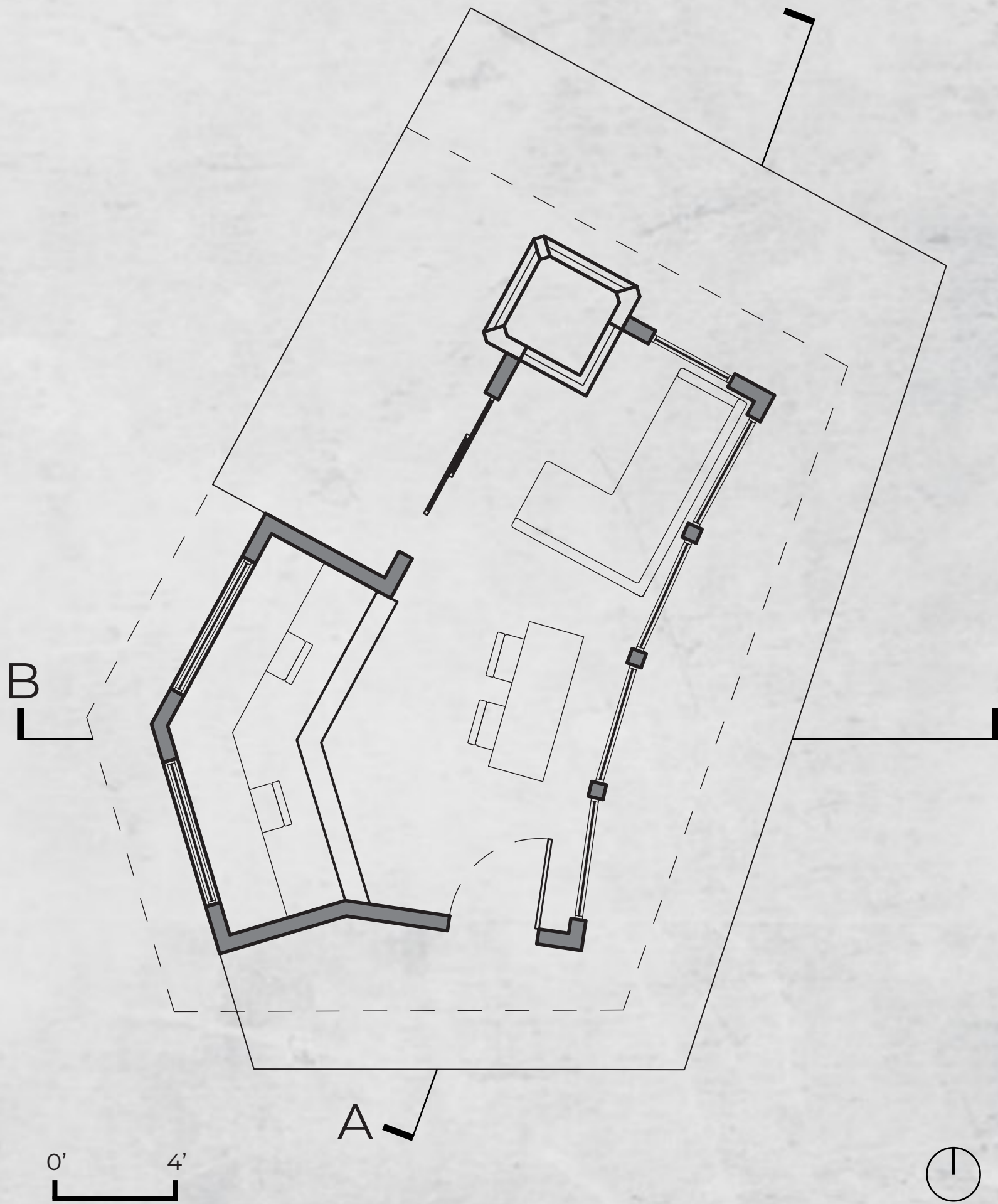




Site Plan



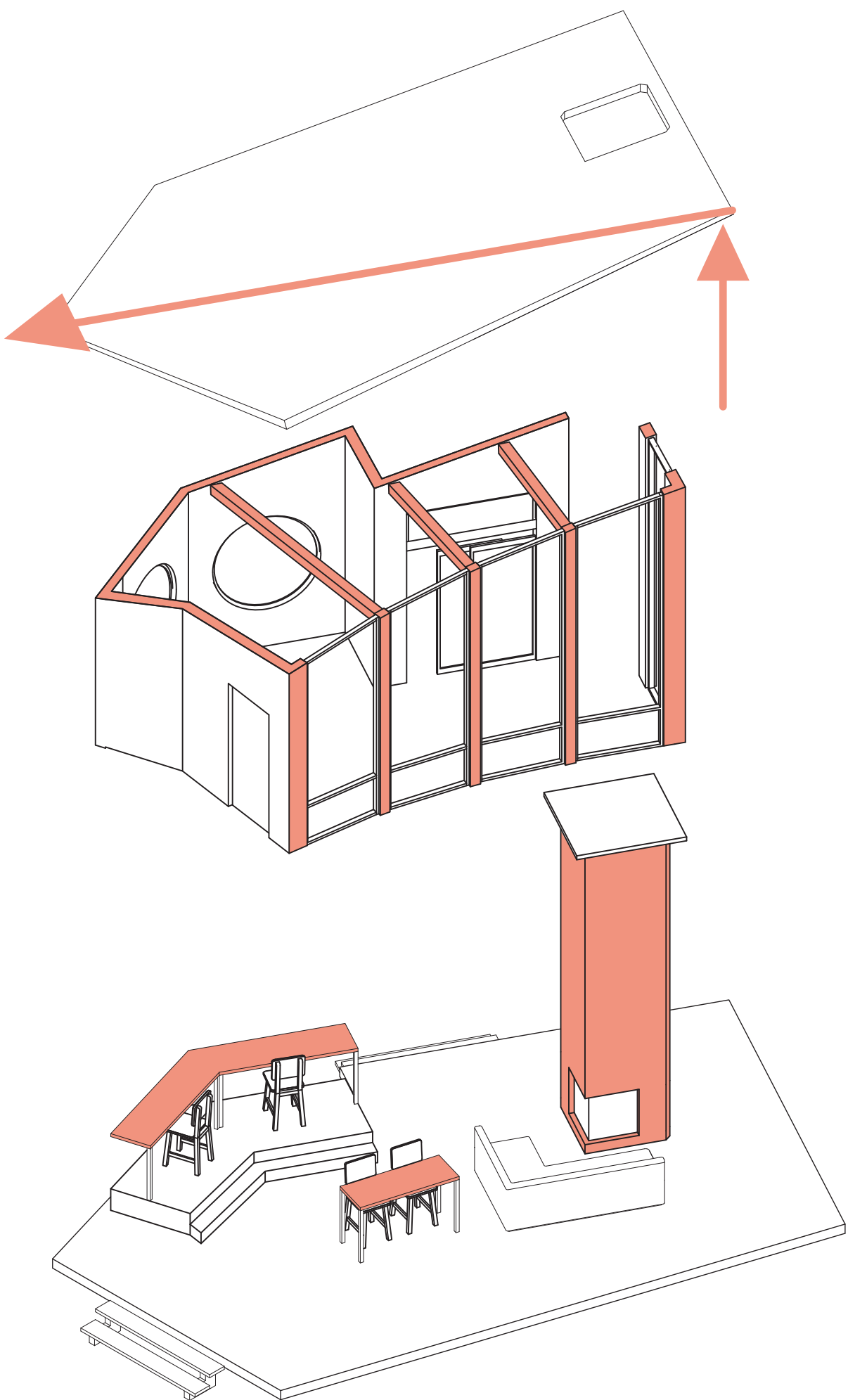
Floor Plan



Section Perspective A



Section B



Roof Detail

The roof is designed with a seam that runs from the north east corner to the south west. It tapers down to the seam to channel rain water down in front of one of the portal windows. This drains straight into the streets runoff.

The North East Corner is the roofs high point, encouraging people to be drawn into the main gathering space and allowing the studio space to blend in.

Structure

The roof structure is supported by 6" x 6" beams on the east side. There are 6" x 6" rafters that span across the main space. The other four sides of the roof are supported by the walls.

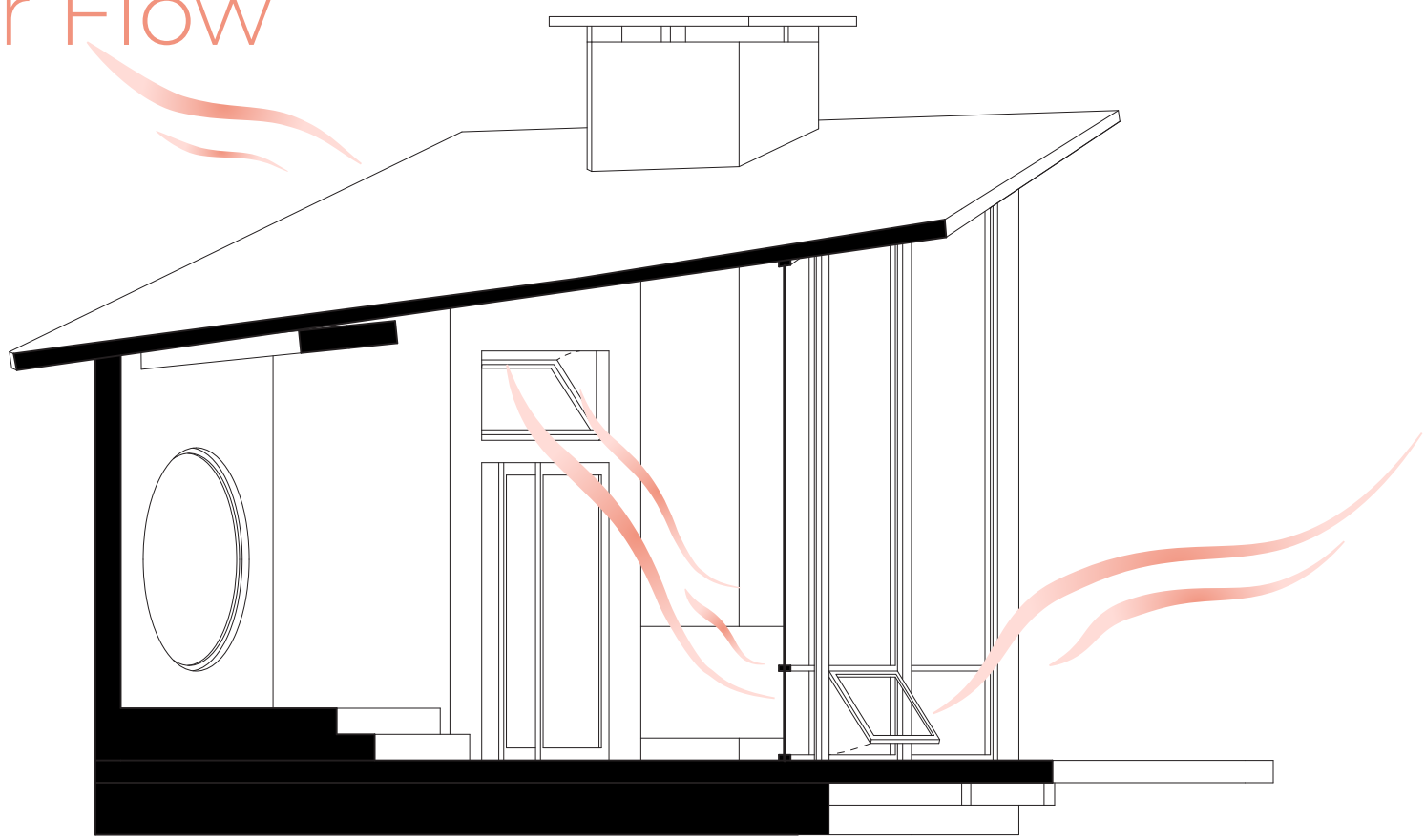
Program

The chimney serves as the main focal point and the **gathering point**. From there the circulation leads outside onto the deck where the other side of the fireplace can be enjoyed.

The table is the **secondary public space** where card games and food can be enjoyed, the two chairs in the studio space can be used to expand capacity.

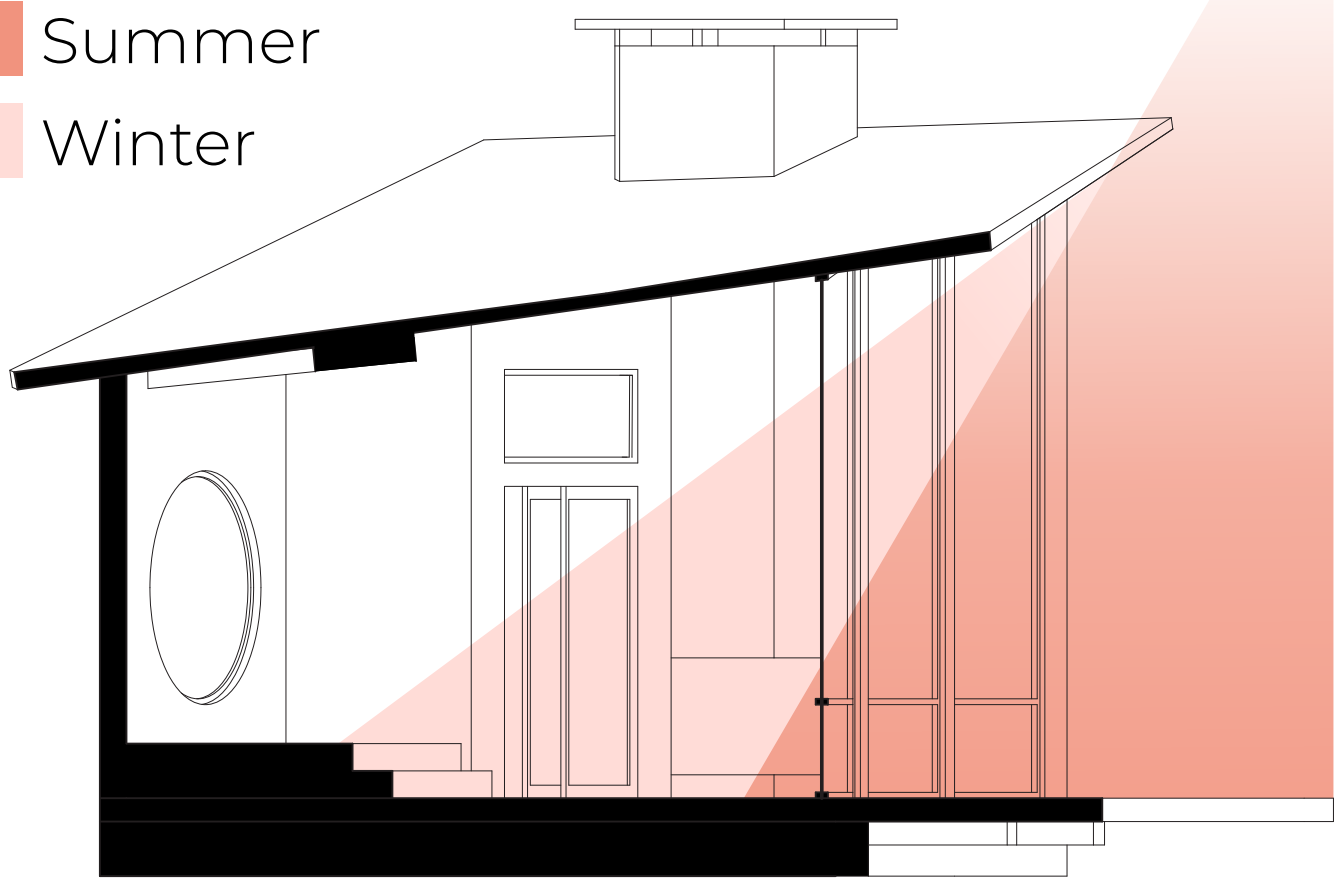
The **studio space** is set aside and private. There are two different work portal windows to work in front of and spread out.

Air Flow



Morning Light

- Summer
- Winter





Physical Model

