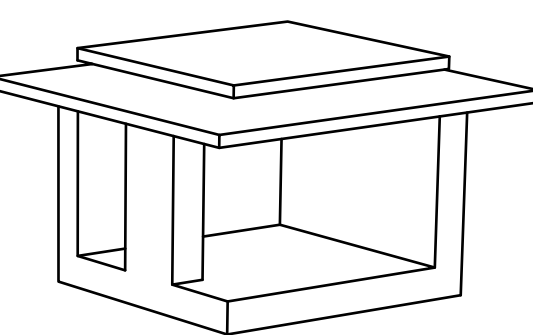
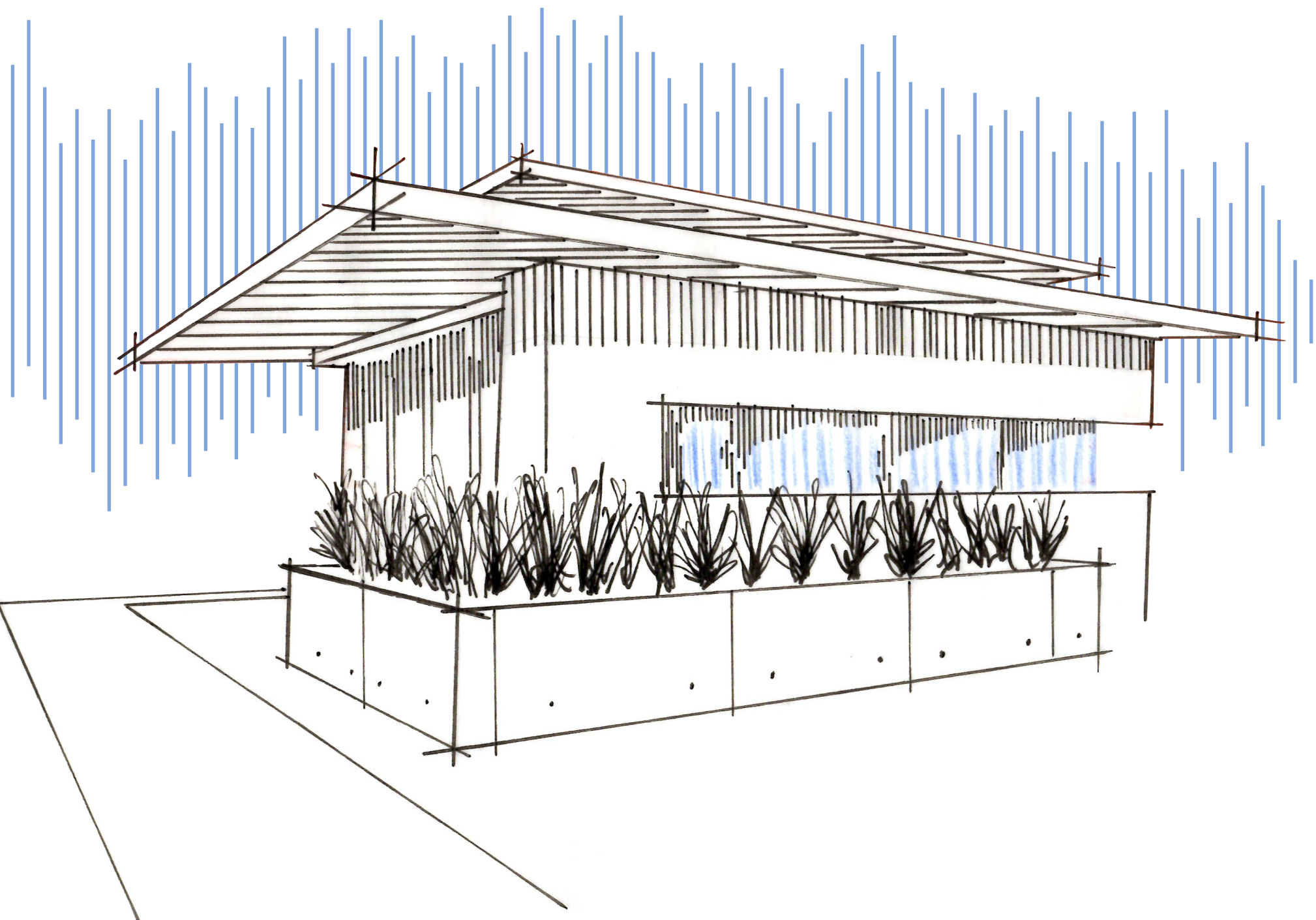
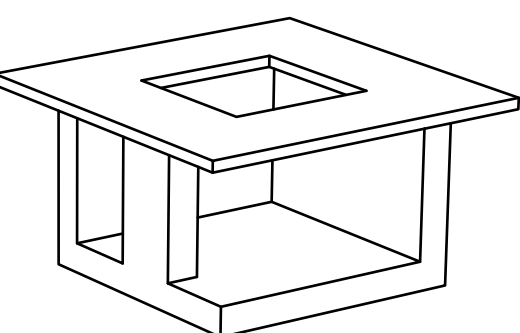


Discovering Paths

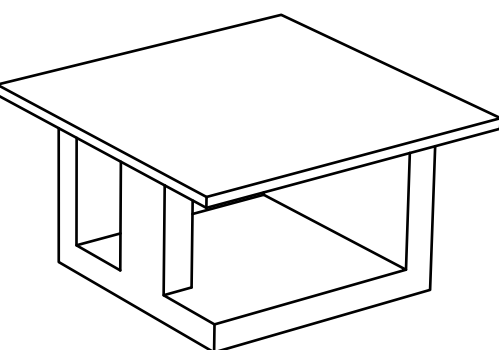
Architect | Parker Hoover
Client | Grant Karger



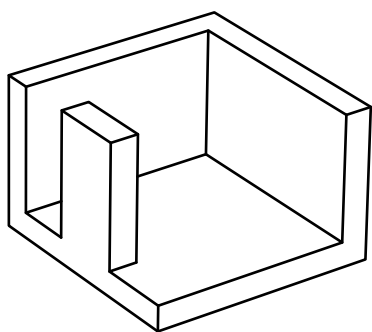
5) Finalize Shelter



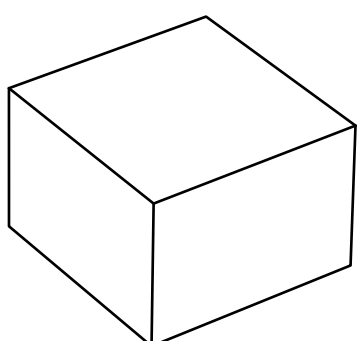
4) Discover Light



3) Create Shelter



2) Direct Focus



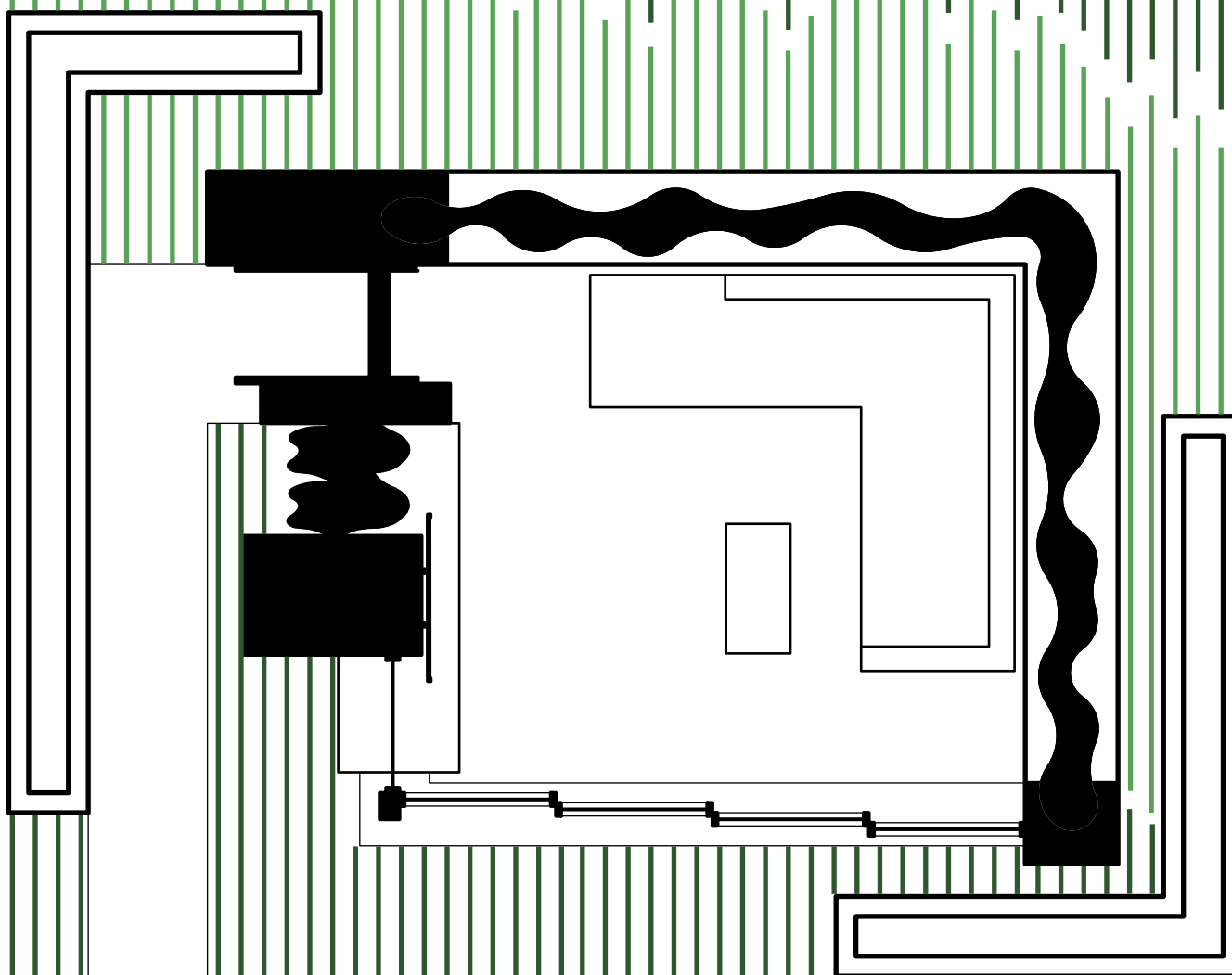
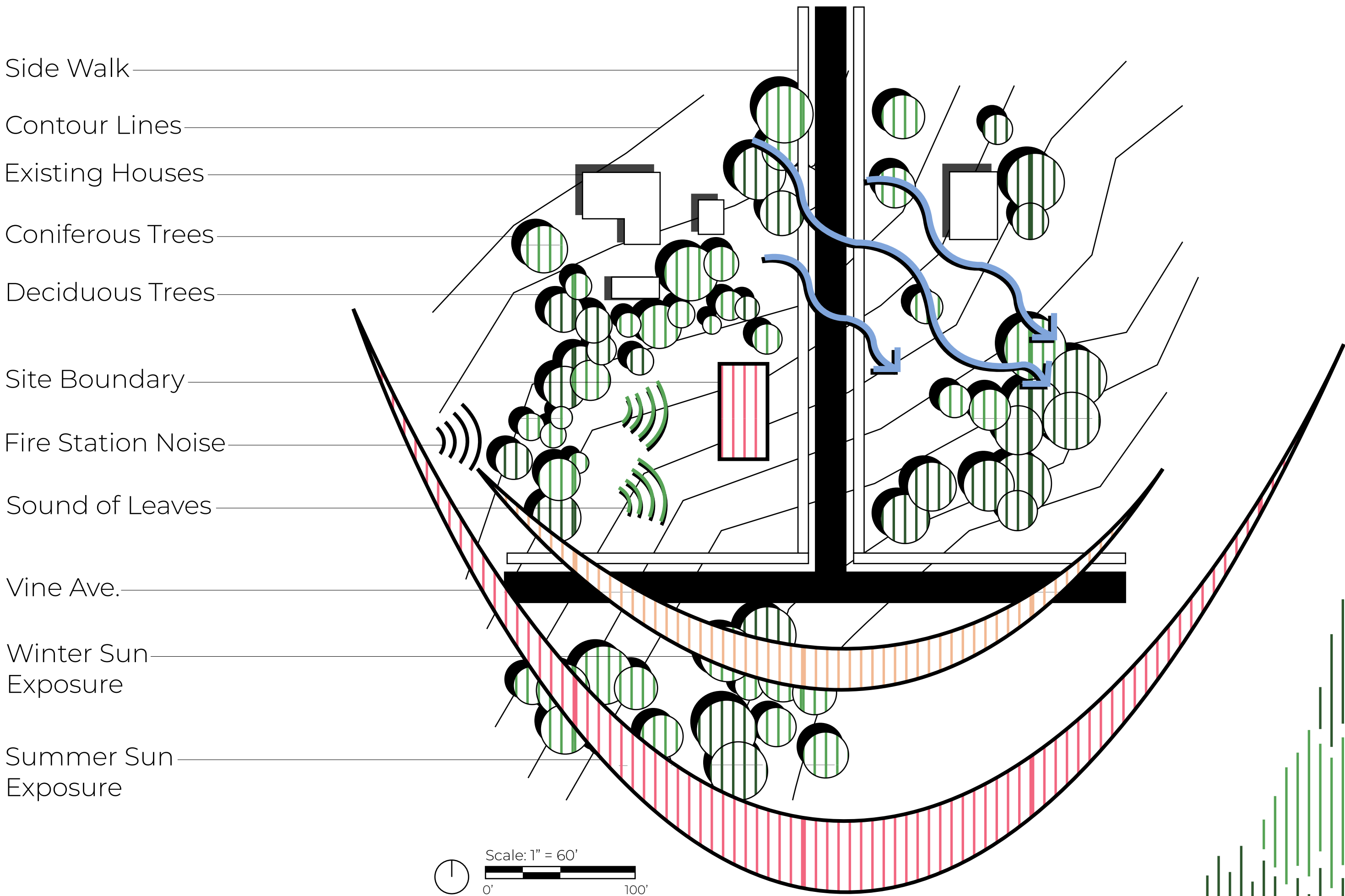
1) Create Space

Site Analysis

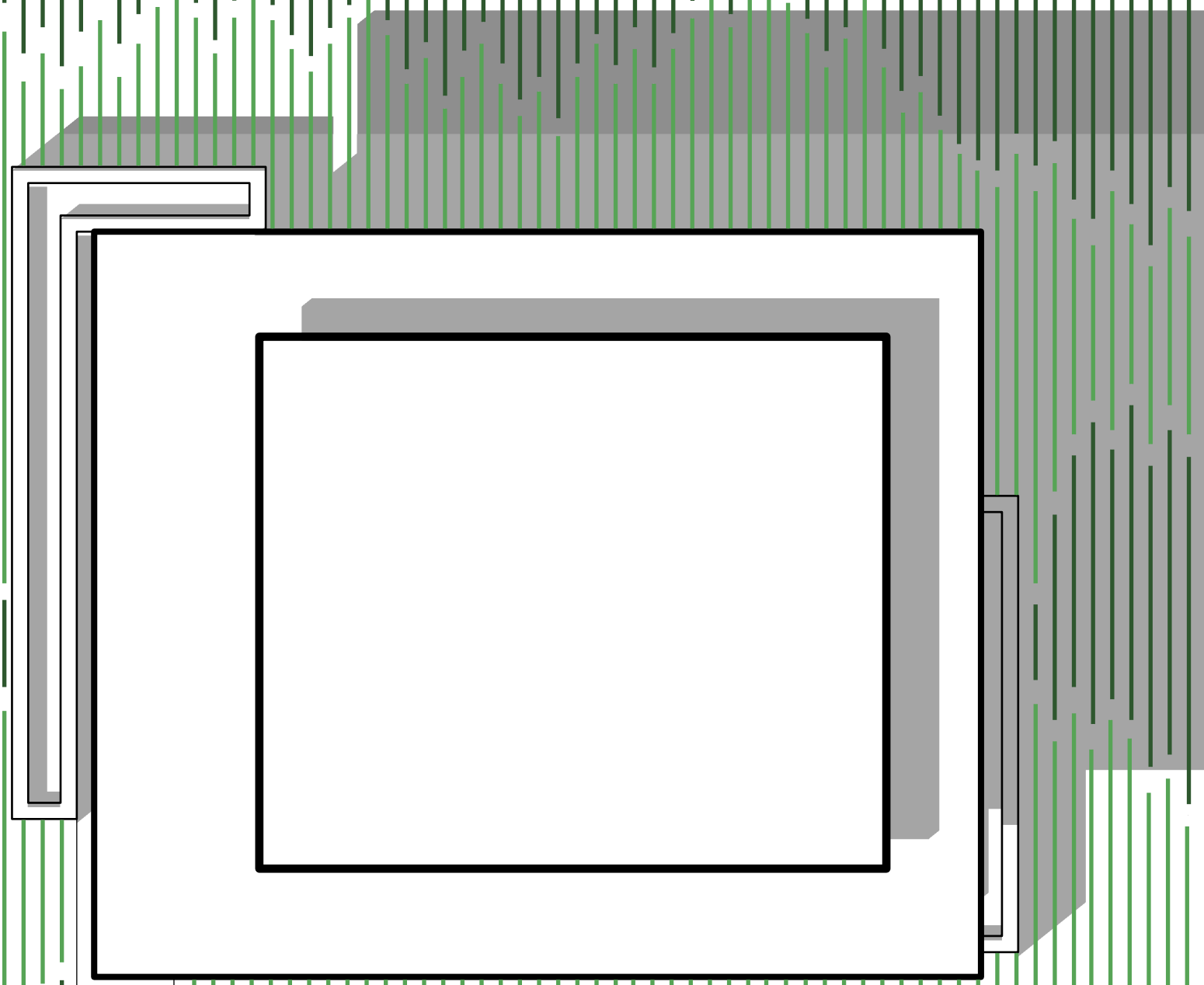
Vine Ave appeared to be relatively quite. Vegetation on the site provides a natural enclosure, while displaying the view of the Rockies. Southern sun exposure is prominent on the site, and the existing structures suggest the protection of current views.

The sun's rays gently warm your skin on site. Tree leaves trickle around the location as the natural prairie vegetation absorbs the sun's heat. Trees enclosing the site provide enough protection to filter a pleasant breeze through the landscape.

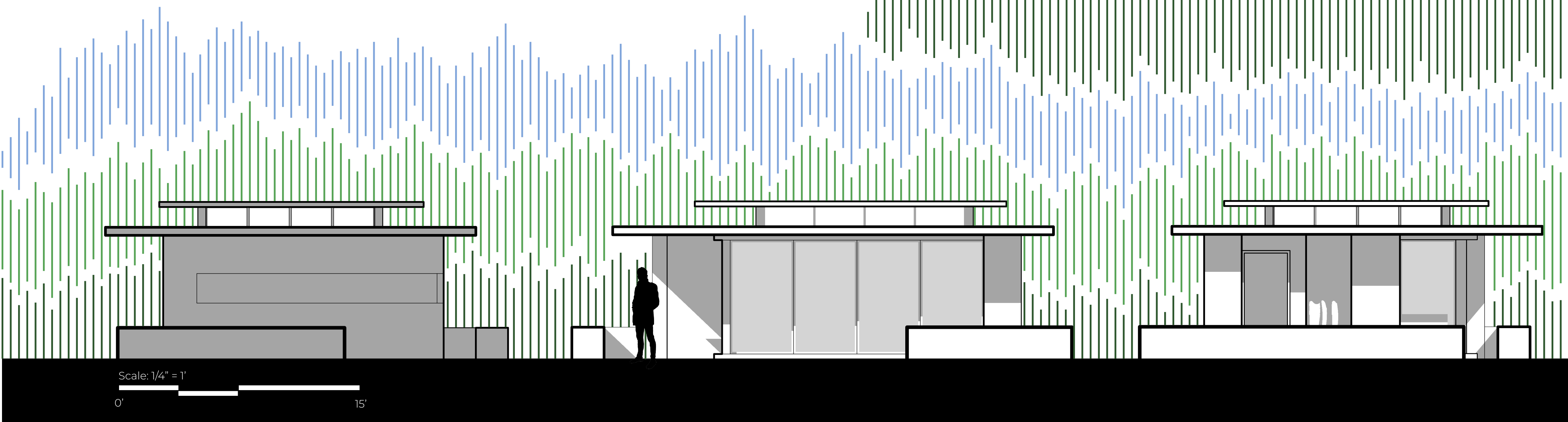
The aura on the block is peaceful. While many plots on Vine Ave are secretive and safe, this one embraces its surroundings. The land is humble, but knows its worth as rocky views, peaceful vegetation, and the sun's rays coexist in harmony.



Plan View



Ariel View



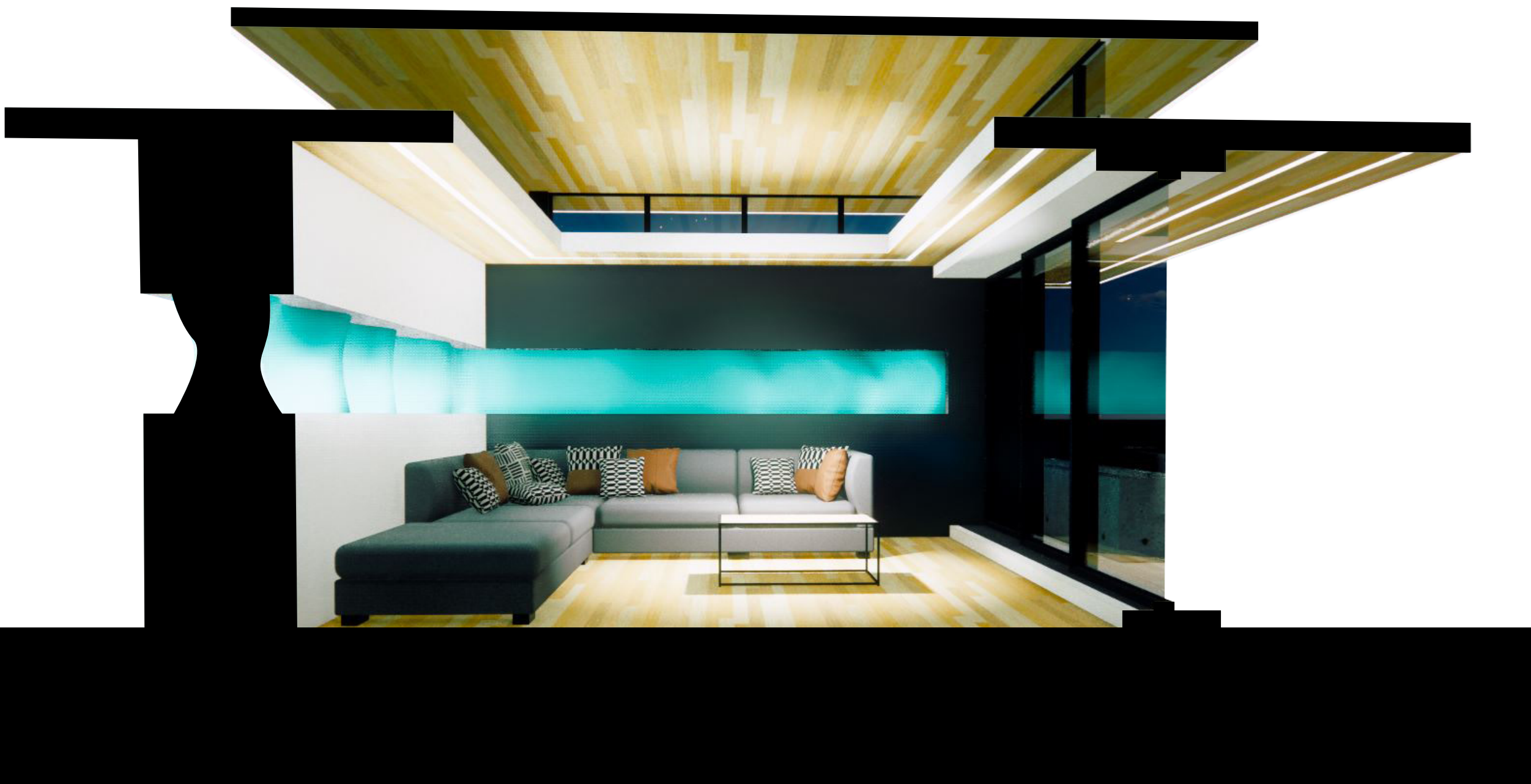
Southern Elevation

Northern Elevation

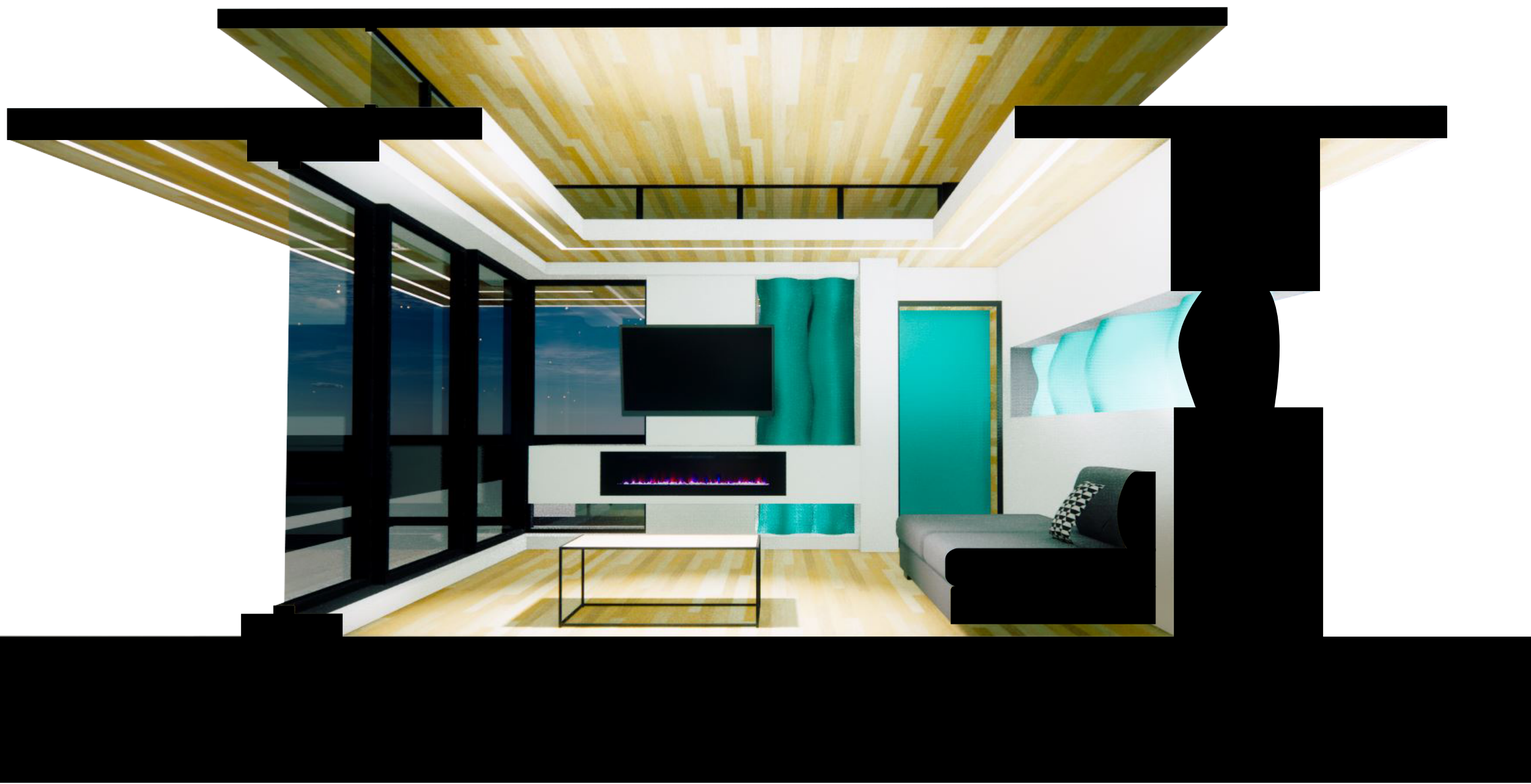
Eastern Elevation

Discovering Paths

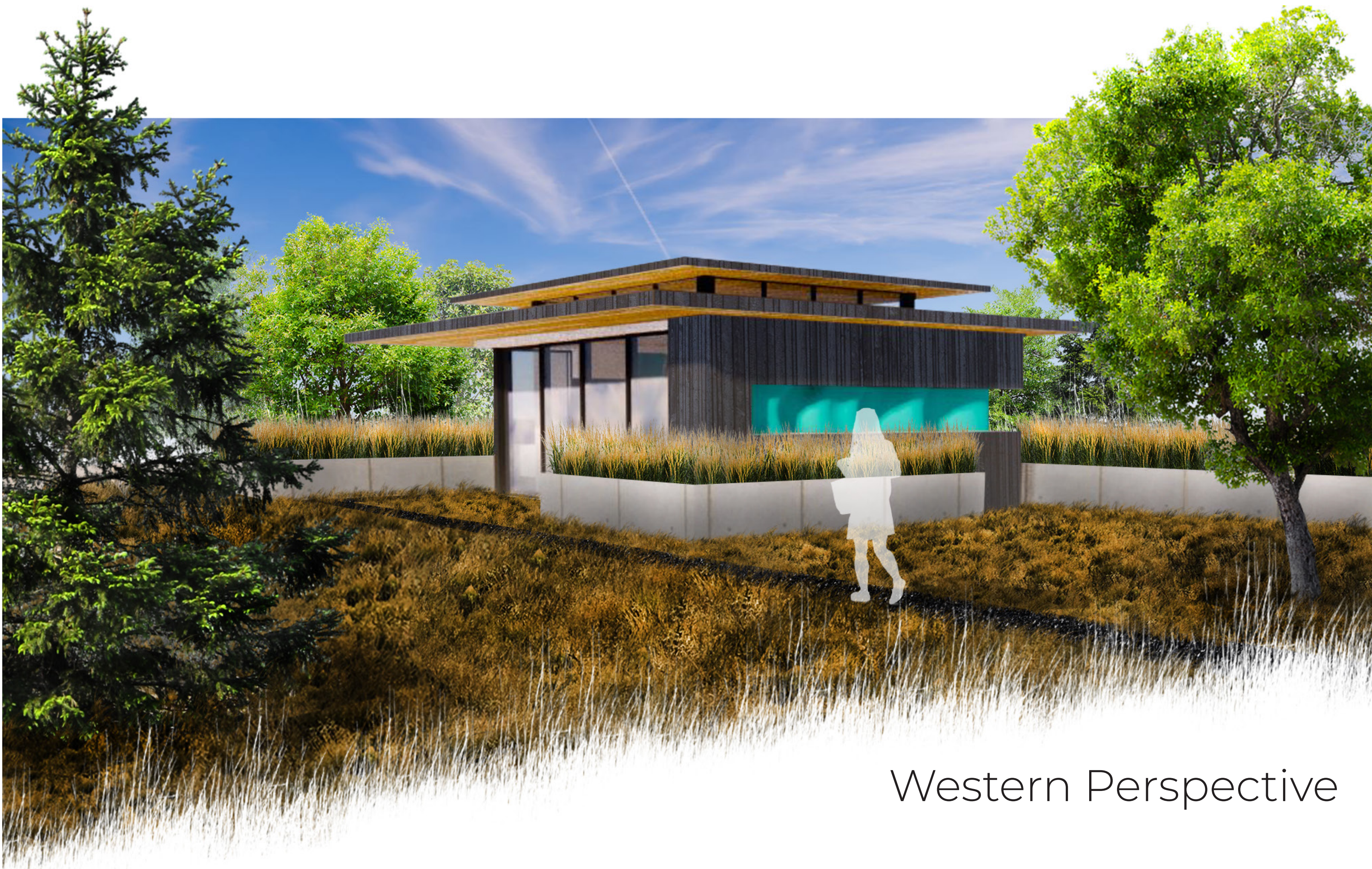
Architect | Parker Hoover
Client | Grant Karger



Eastern Section



Western Section



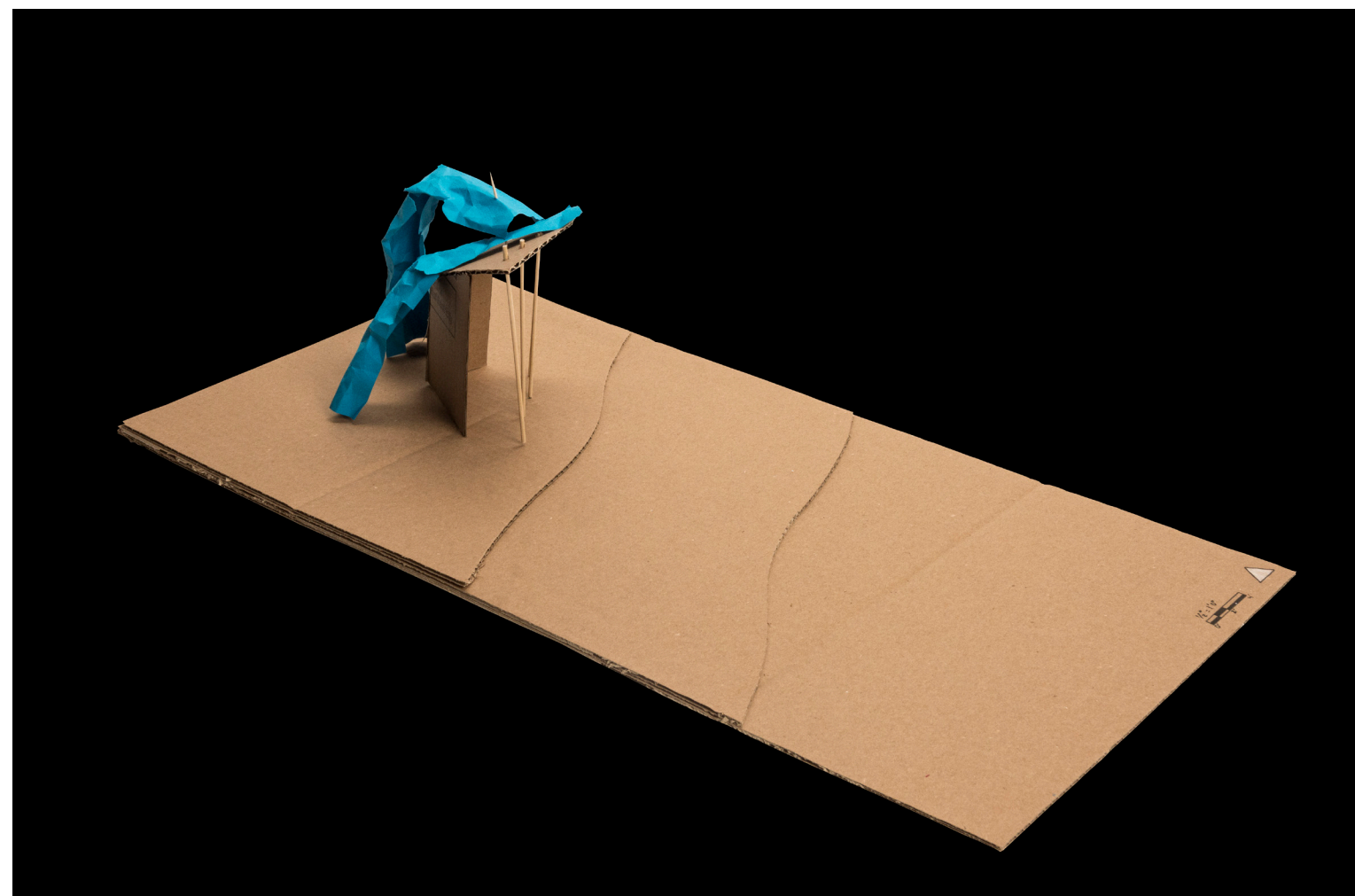
Western Perspective



Eastern Perspective

Discovering Paths

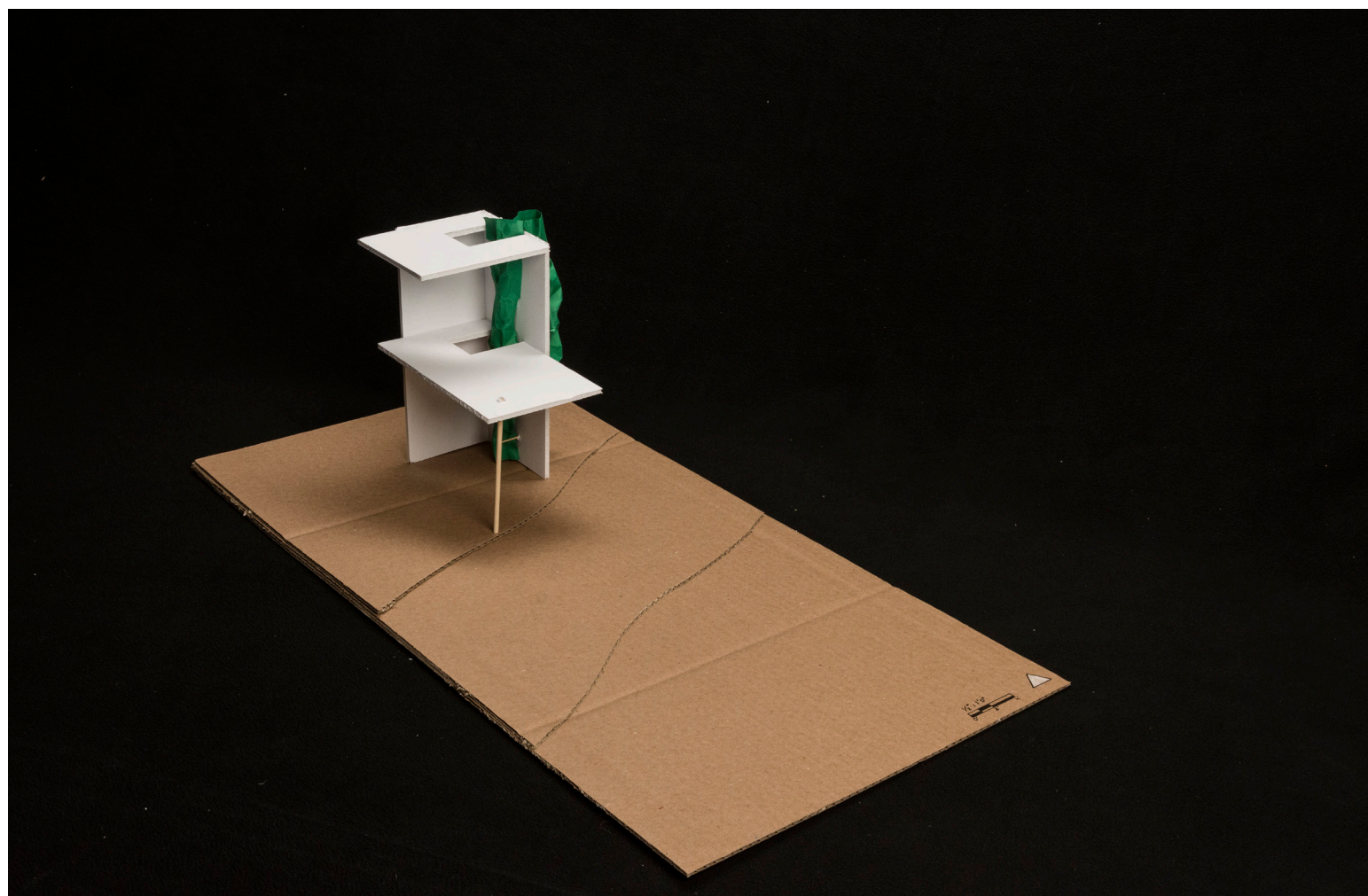
Architect | Parker Hoover
Client | Grant Karger



Parti 1



Parti 2



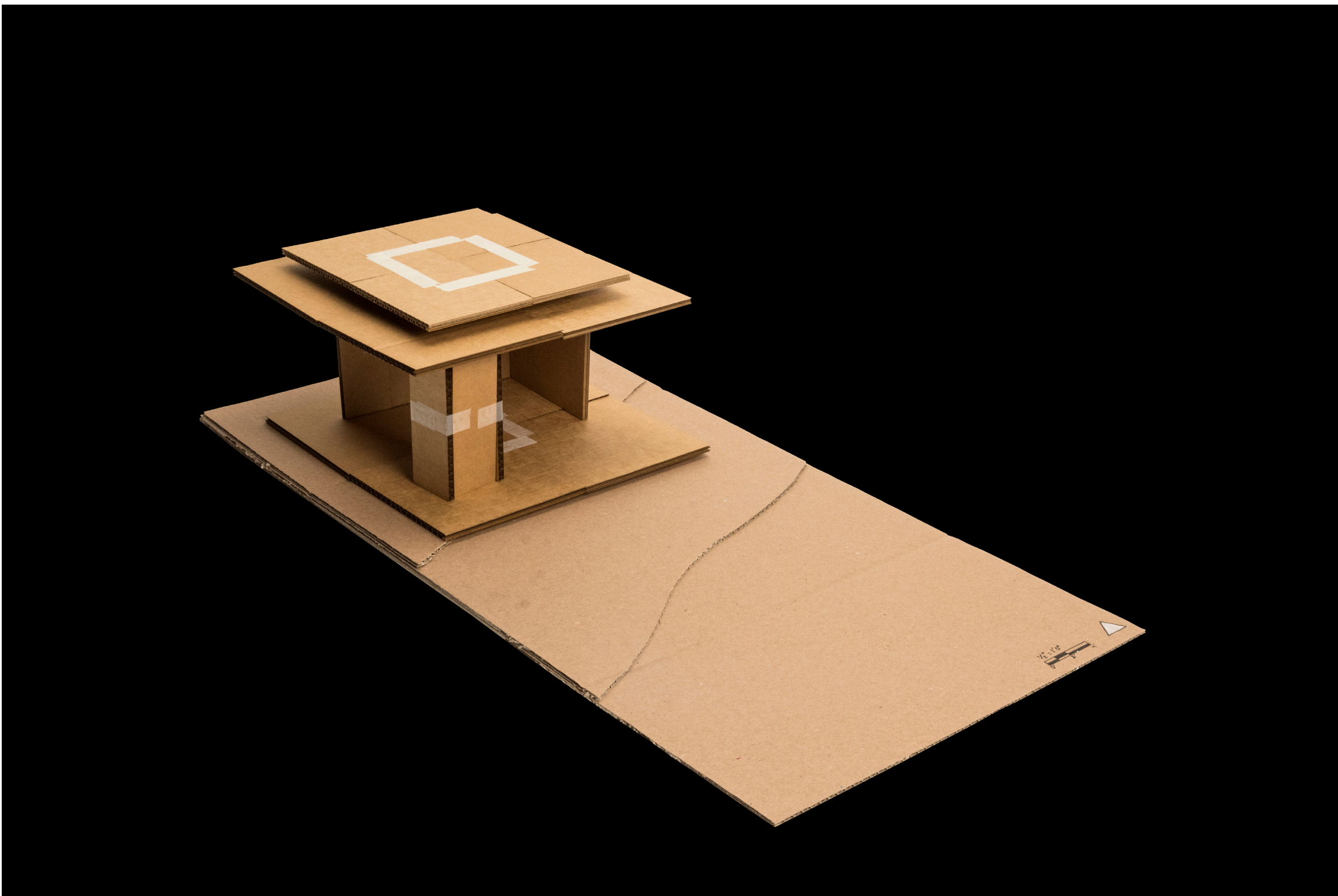
Parti 3

Narrative

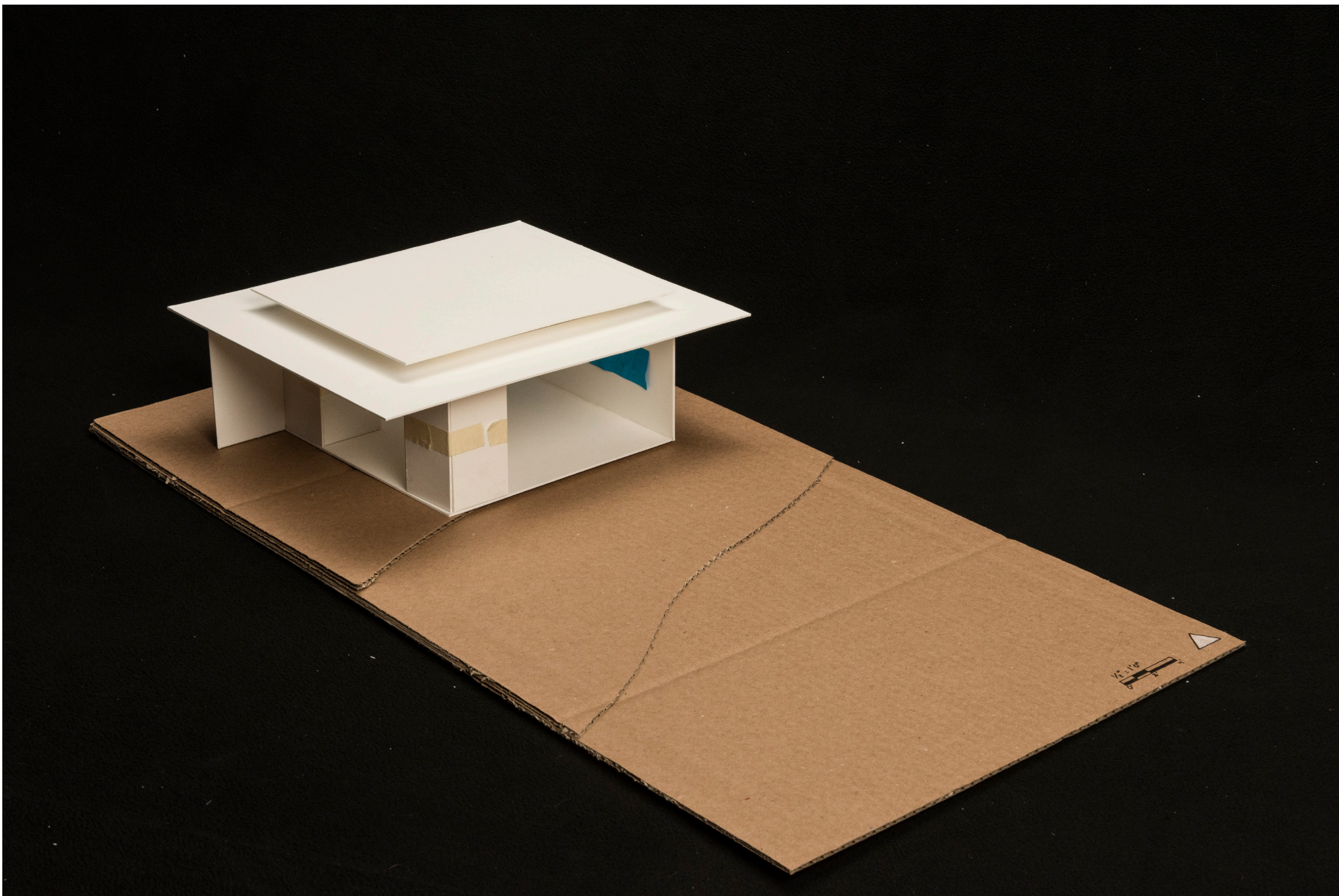
Replicating Grant’s mental and physical retreats throughout life, this space will allow him to explore nostalgia. After exploring his fond memories of family time in Hawaii, and his close friendships formed playing football and basketball, we discovered and explored Grant’s value of a family-like bond.

The form of the space replicates and explores the organic form of coral reefs, and the organic paths created by athletes. The space will offer hospitality and bond his passions of sea life, sports, and video games. Most of all, a space of levity and warmth will satisfy his requests for comfort.

Kit of Parts



Museum Board



Design Objectives

- Warmth and comfort
- Relaxed social setting
- Find harmony among conflicting requests.