

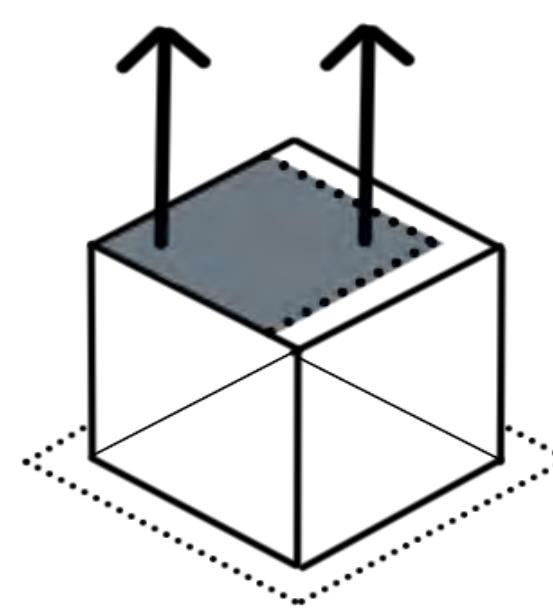


# NEST

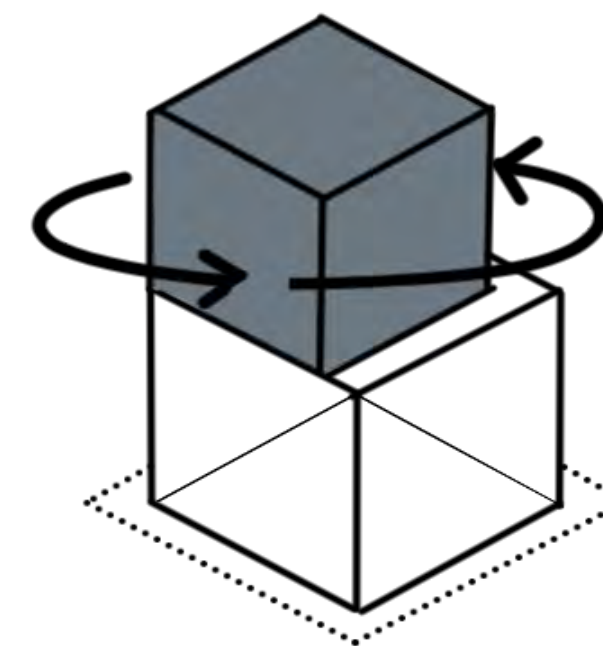
Relax / Observe / Cleanse/ Socialize

Nest was created for a client who values both social and private interactions. With that in mind the design focused on creating zones that would accommodate to both the social and private interests of the client in order to create a space that was unique to them. Programs include bird watching, star gazing, hosting, and bathing. Every aspect of the design was to induce the feeling of well-being and self care. Designing to

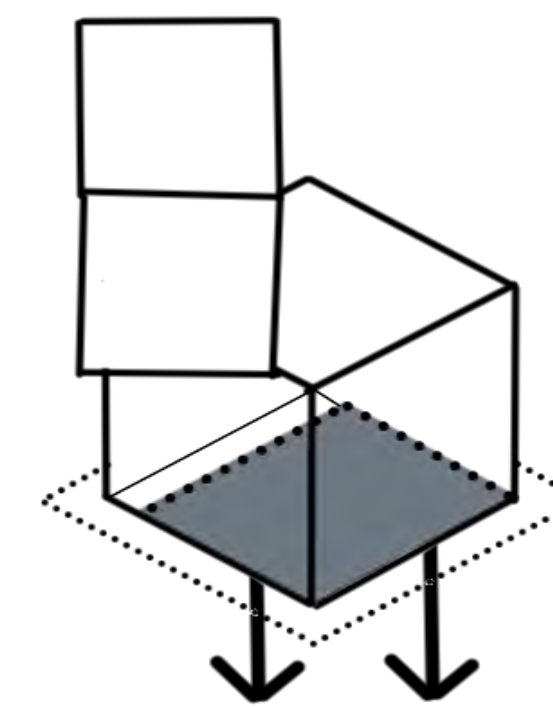
the clients specific needs shaped the project from start to finish; opposed to creating space to place the programs. The clients passion for bird watching specifically, was an integral part of the designs form. The room for cleansing is **perched** above the first floor so that the user can take advantage of first class scenes of the surrounding site and any bird that flies by.



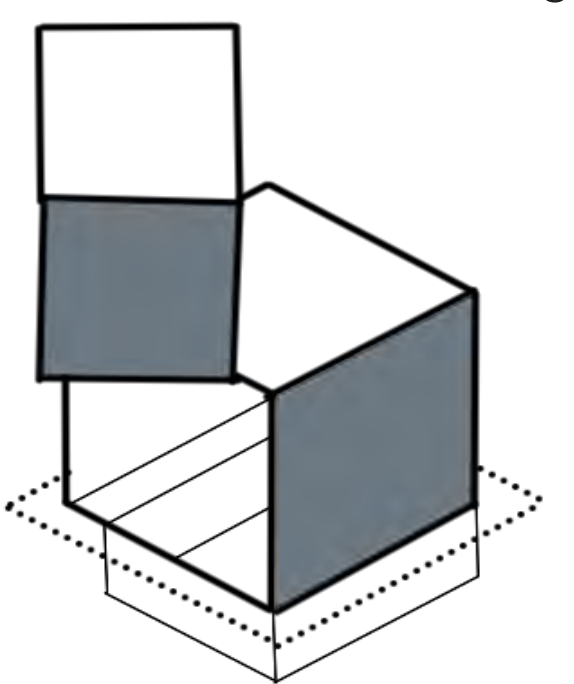
A second floor was introduced to separate the social zone from the private.



Rotating the second floor 45° off axis, so that it would be facing true west. This directs the users attention towards the foothills.



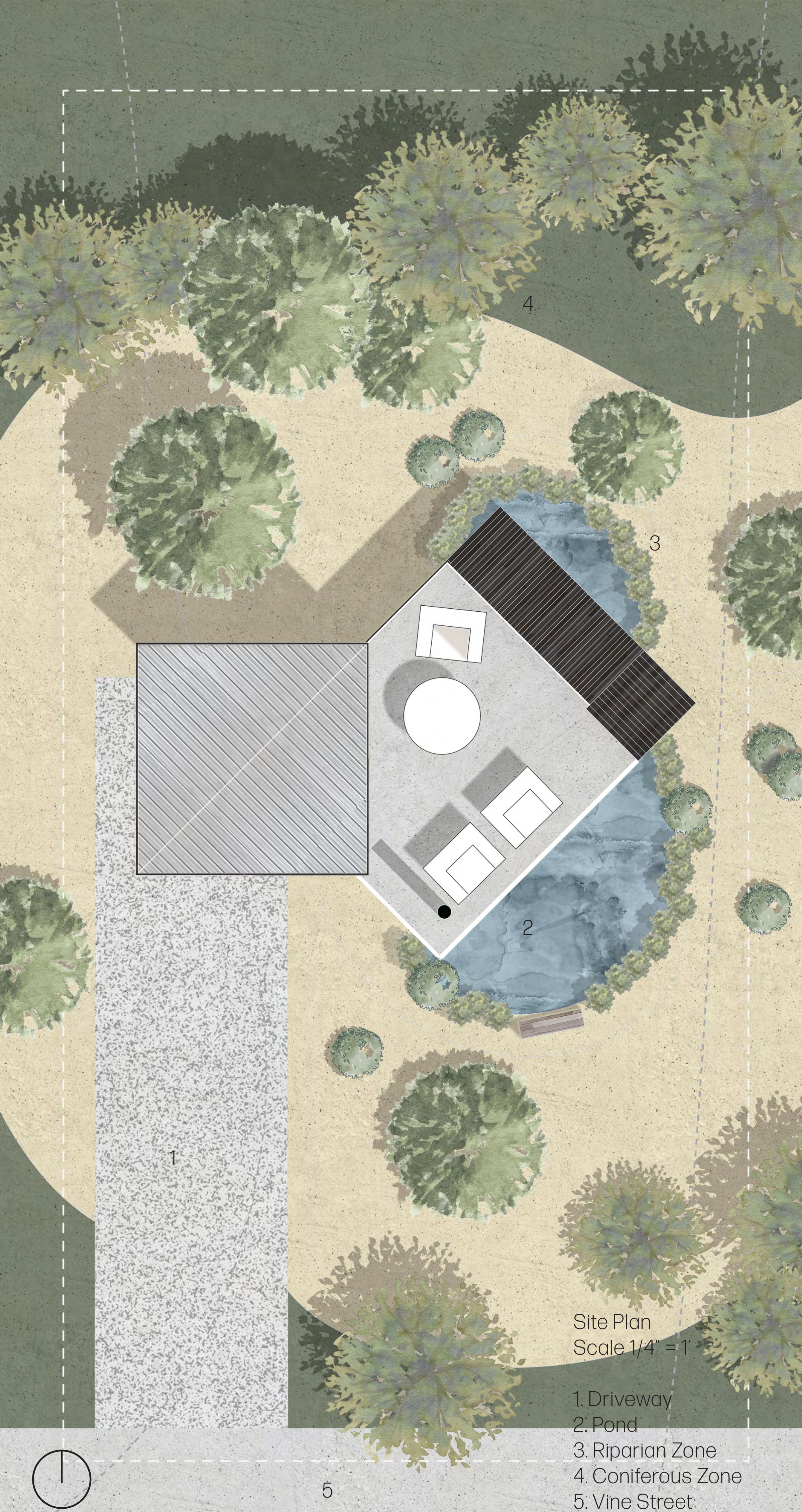
Sinking approximately 96 ft² of the first floor creates a better sense of place for the social area.



Glass curtains were added to integrate nature into the design. Also, to better harness the suns warmth.

Form Diagram





## Functionality

Dividing the design to accommodate two programmatic opposites was accomplished by separating the two. The first floor, approximately, is 12x12 feet. Occupying the majority of the total 250 ft<sup>2</sup>. Since it is the designated social zone it provides the user(s) enough space to comfortably converse and collaborate. With the fire place located in this zone it truly becomes the builds heart. To access the second floor one must go through the first floor, a safety measure, then take a stairwell enclosed in wooden slats. This is to provide protection from the elements without sacrificing a connection to nature. When exiting the stairwell the user finds themselves on a patio complete with weather resistant chairs and end tables. The deck diffuses the energy one has from the first floor, calming the user before entering the cleansing room. The **perch** is where the client will go to find solitude and privacy. The tub represents more than just a physical cleansing, by immersing oneself in the perch they will find themselves cleansing mind, body, and spirit.

## Materiality



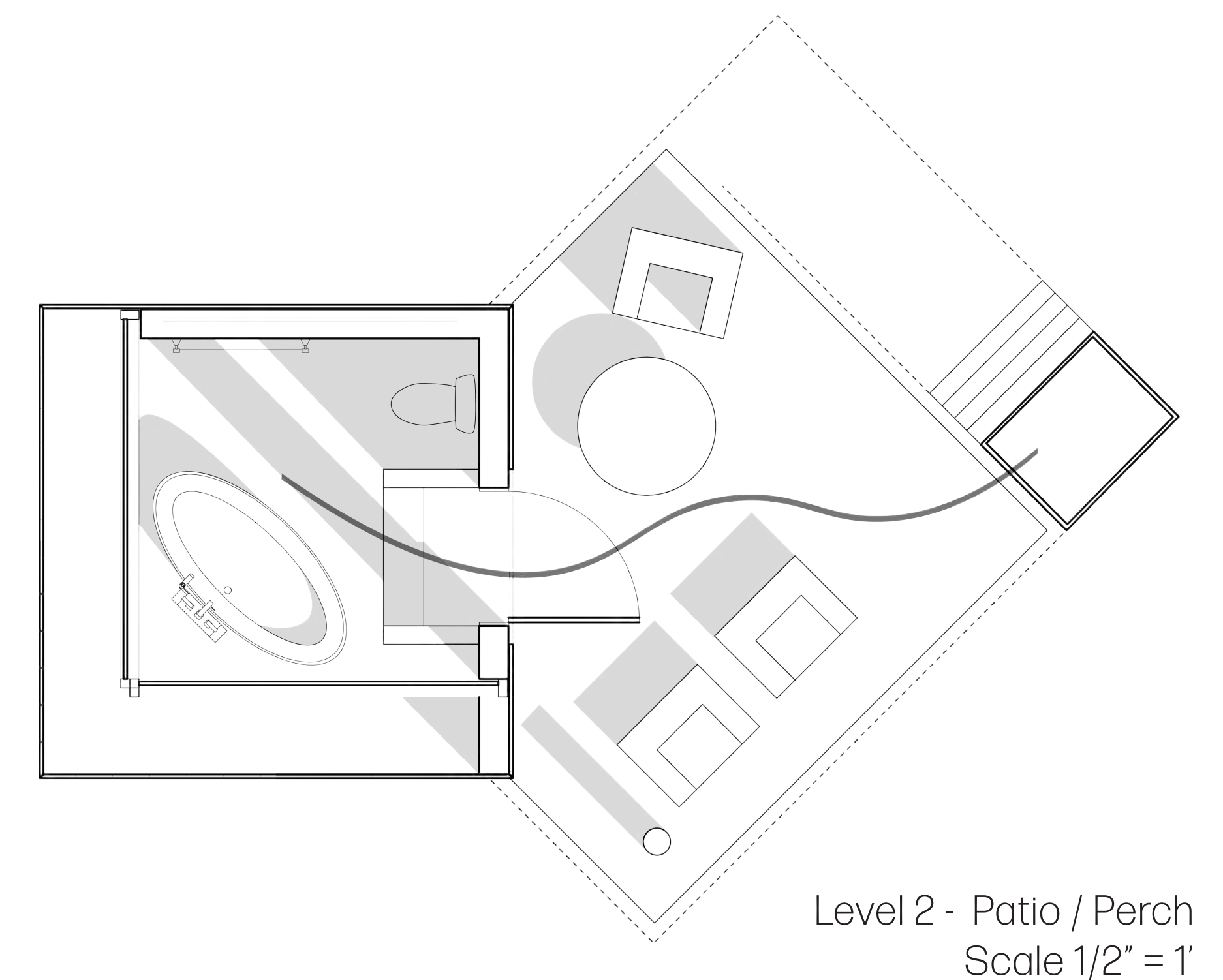
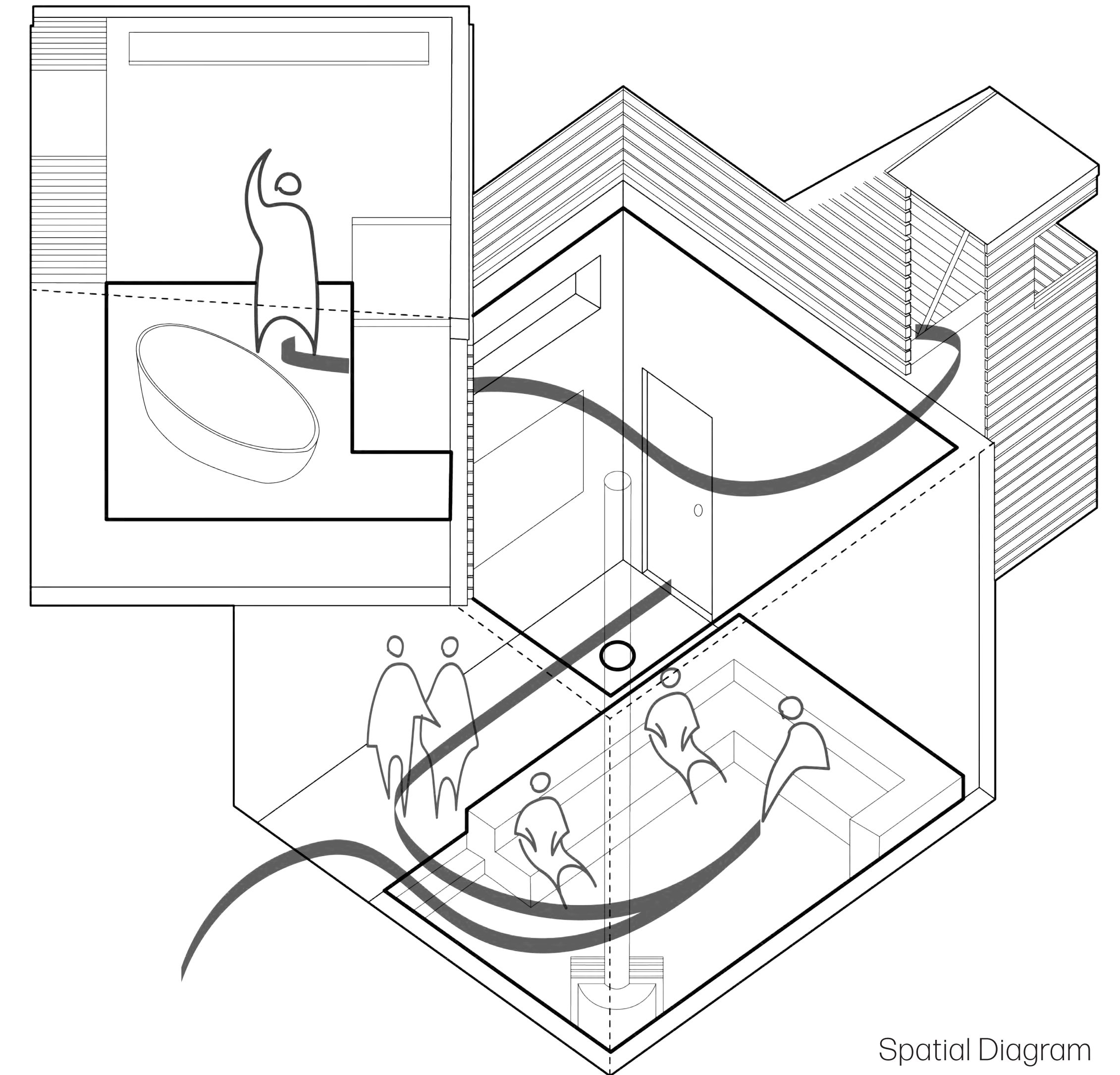
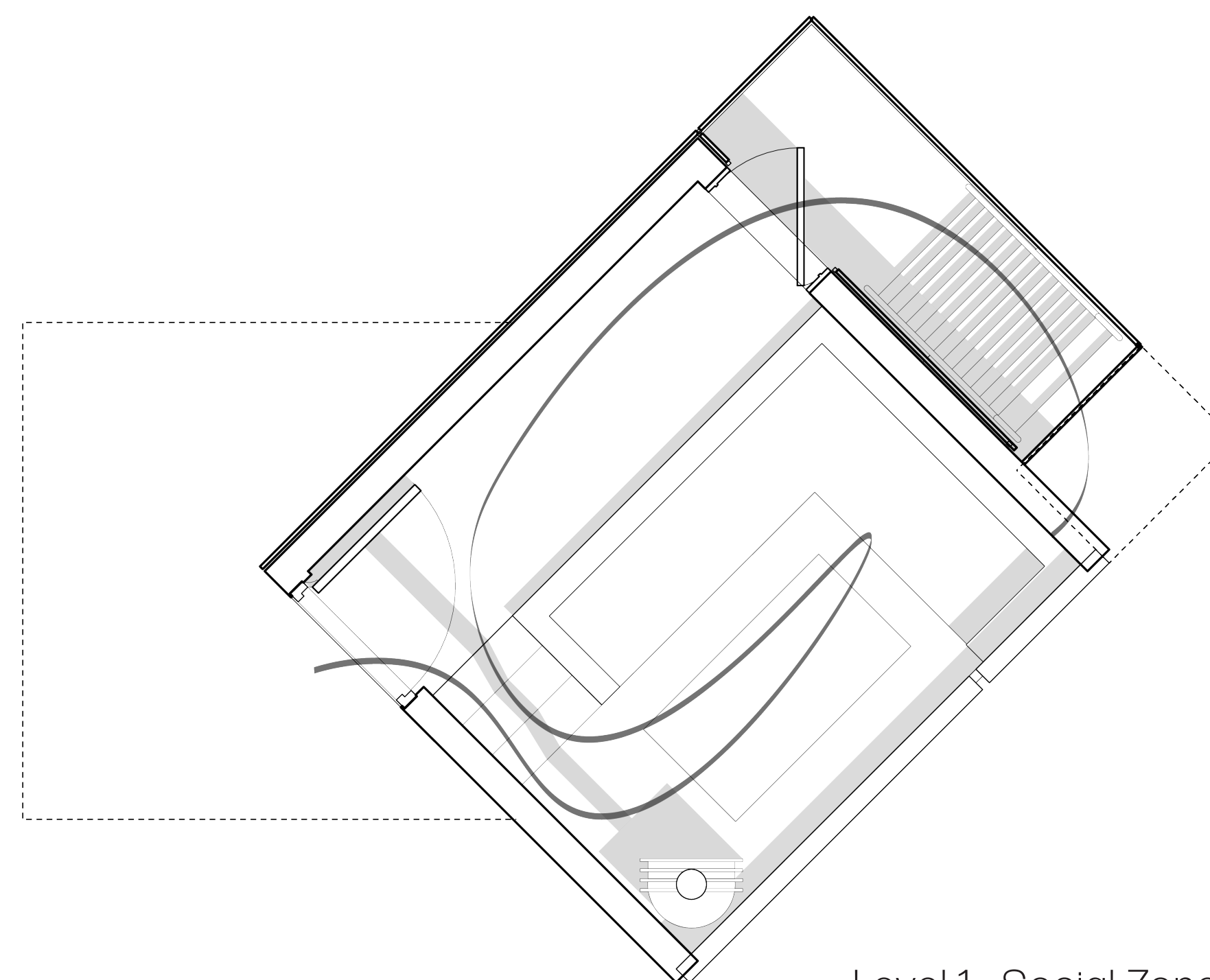
Mahogany



Polished Concrete



Charred Ash



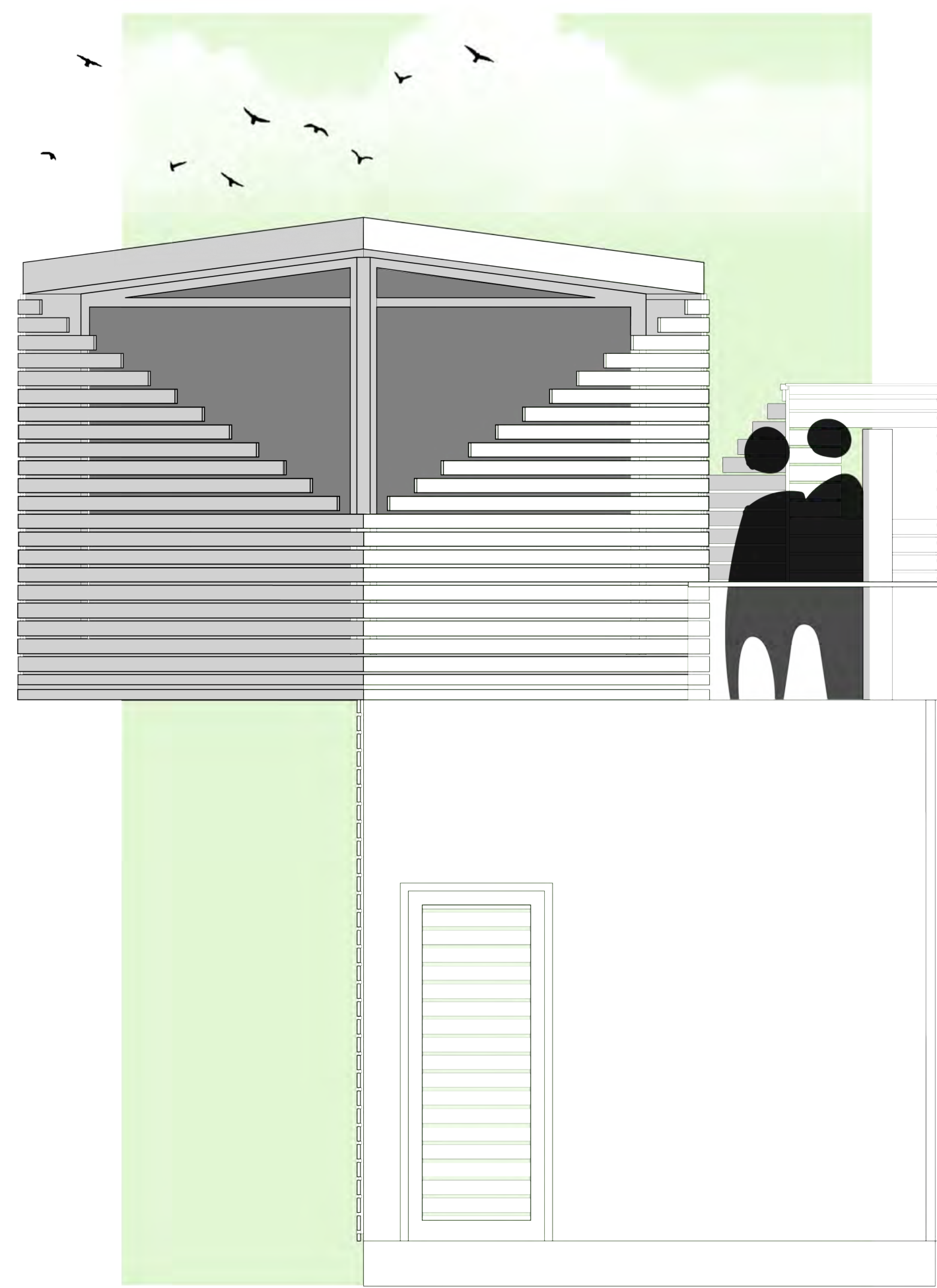




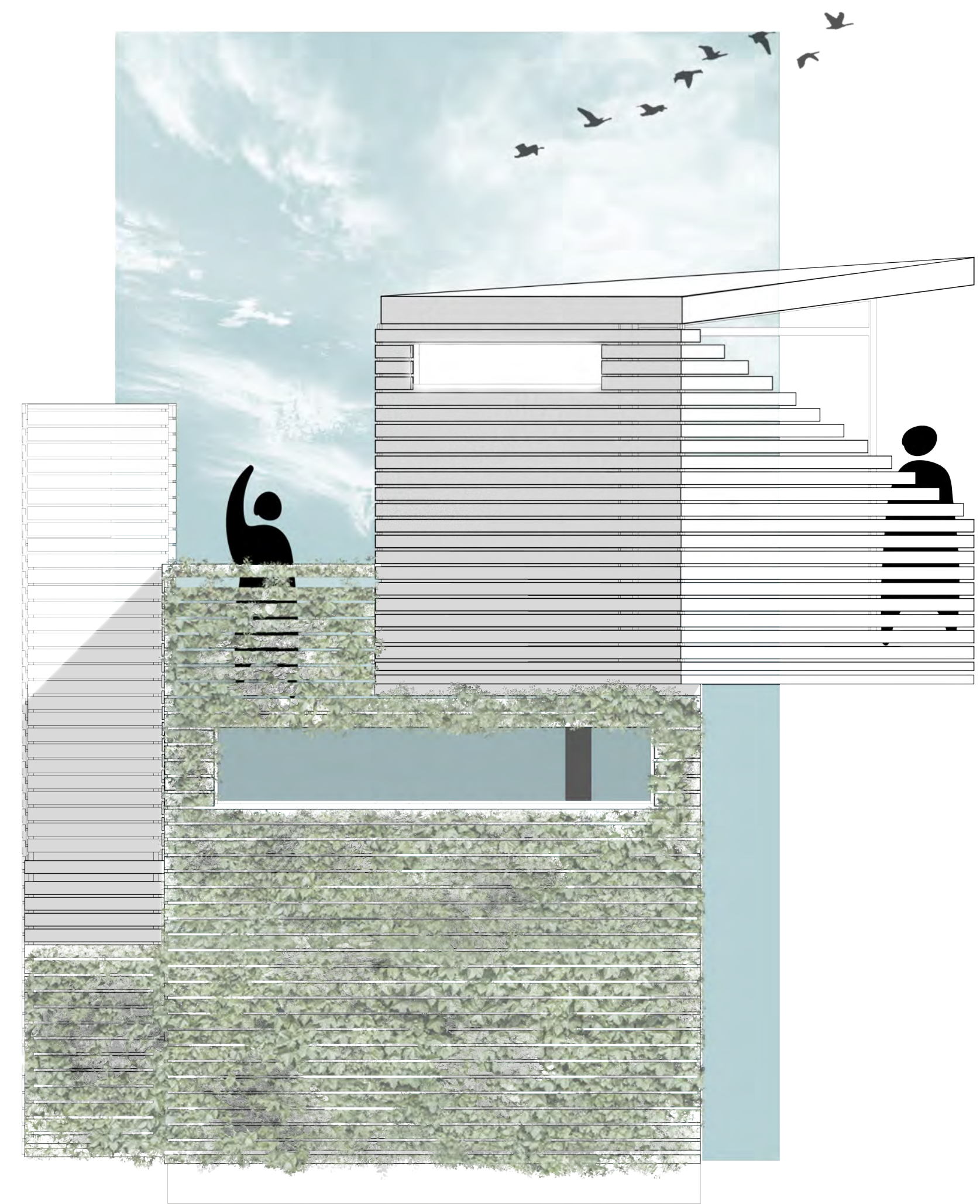
SE Elevation - Fall  
Scale 1/2" = 1'



SW Elevation - Winter  
Scale 1/2" = 1'



NW Elevation - Spring  
Scale 1/2" = 1'



NE Elevation - Summer  
Scale 1/2" = 1'





Model - 1  
Scale 1/2" = 1'



Model - 2  
Scale 1/2" = 1'



Model - 3  
Scale 1/2" = 1'

## Closing

Although Nest was designed around one person's wants and needs, it is a space that can accommodate any person looking to retreat and alone or with friends and family. The inclusion of nature in the space opens up the fairly small dimensions of the design into a space that surpasses its built features.

This project has been a very exciting and new experience. Working with a client pushed me as a designer to exceed designing for more than my own vision of what a retreat should be. Focusing on programs that were not in my wheelhouse challenged me to change my concept of what a retreat should be. I am happy with Nest and I hope to continue developing as a designer.