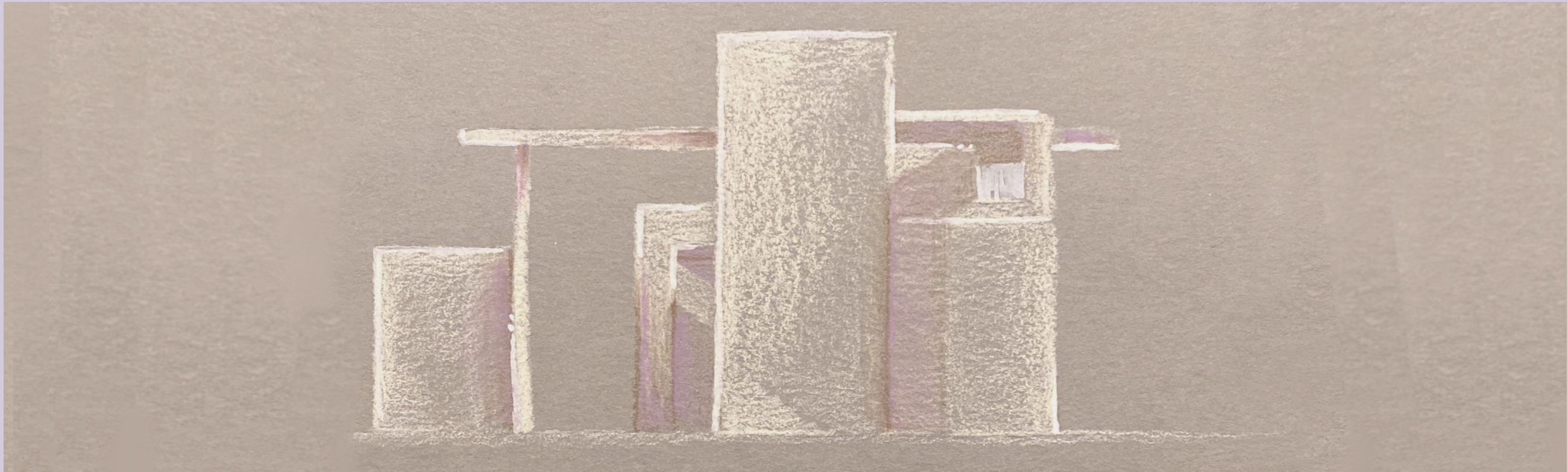




ENTRANCE RENDERING  
facing west



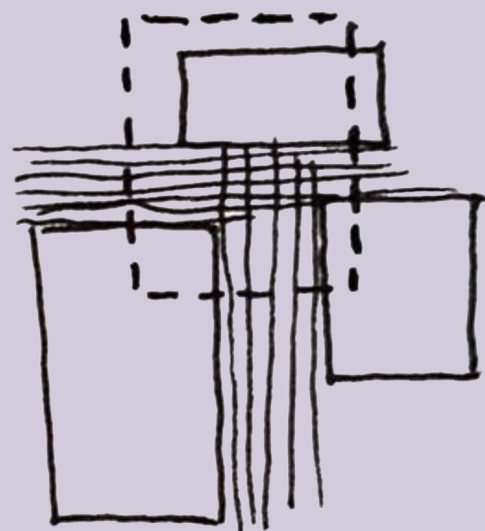
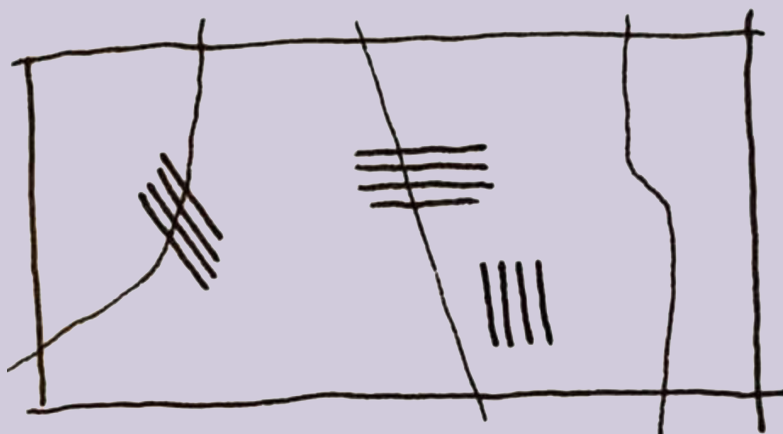
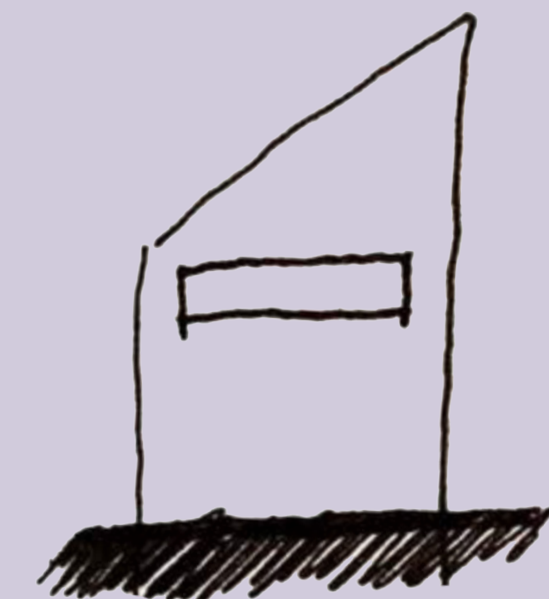
# DOGTROT RETREAT

The Dogtrot retreat draws upon the appalachian vernacular of the dogtrot style house which utilizes outdoor breezeways to separate parts of the home based on function. This separation allows for practical ease of use as well as a passive touch of nature for the inhabitant of the space.

This space aims to give the client a place to truly retreat. Physical retreat comes in the form of three distinct buildings to allow a flow of

energy and connection with nature. Mental retreat occurs through the clean, minimal spaces, granting visual rest and peace of mind.

With a large pergola and big folding glass doors, the dogtrot retreat easily transforms from one large environment into three separate “houses”. Each house embraces the westerly view of the foothills with high, thin windows that welcome nature while preserving privacy.





# DESIGN CONCEPT

## MINIMALISM

Mental retreat within this space is linked to a sense of organization and minimalism. retreat to him is linked with cleanliness and a passive freedom of energy.

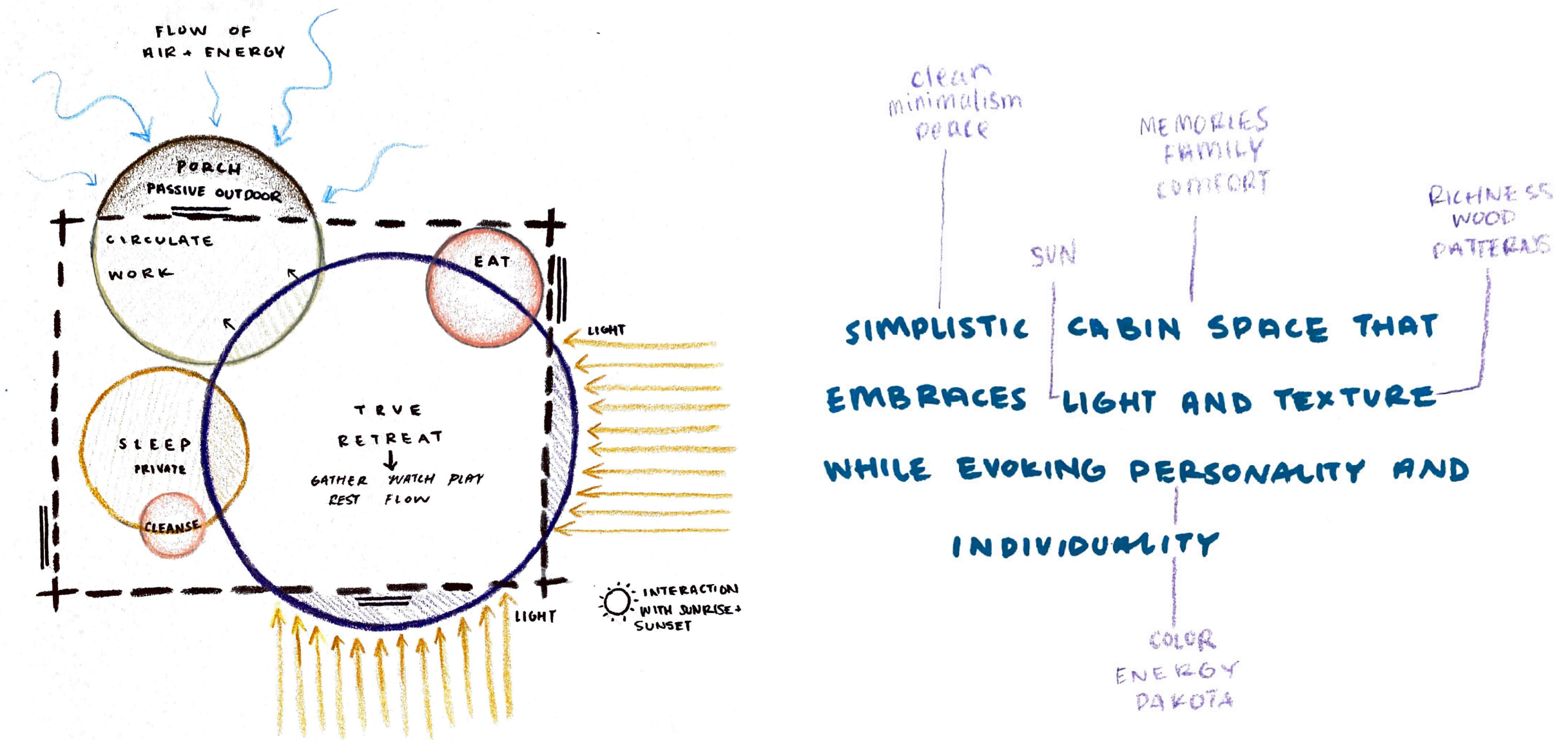
## INDIVIDUALITY

It is important for the design to recognize Dakota's individual tastes and personality. Utilizing the creative influences of artists like Prince and Powerline alongside his desire for a traditional cabin feel forms the base aesthetic of Dogtrot house.

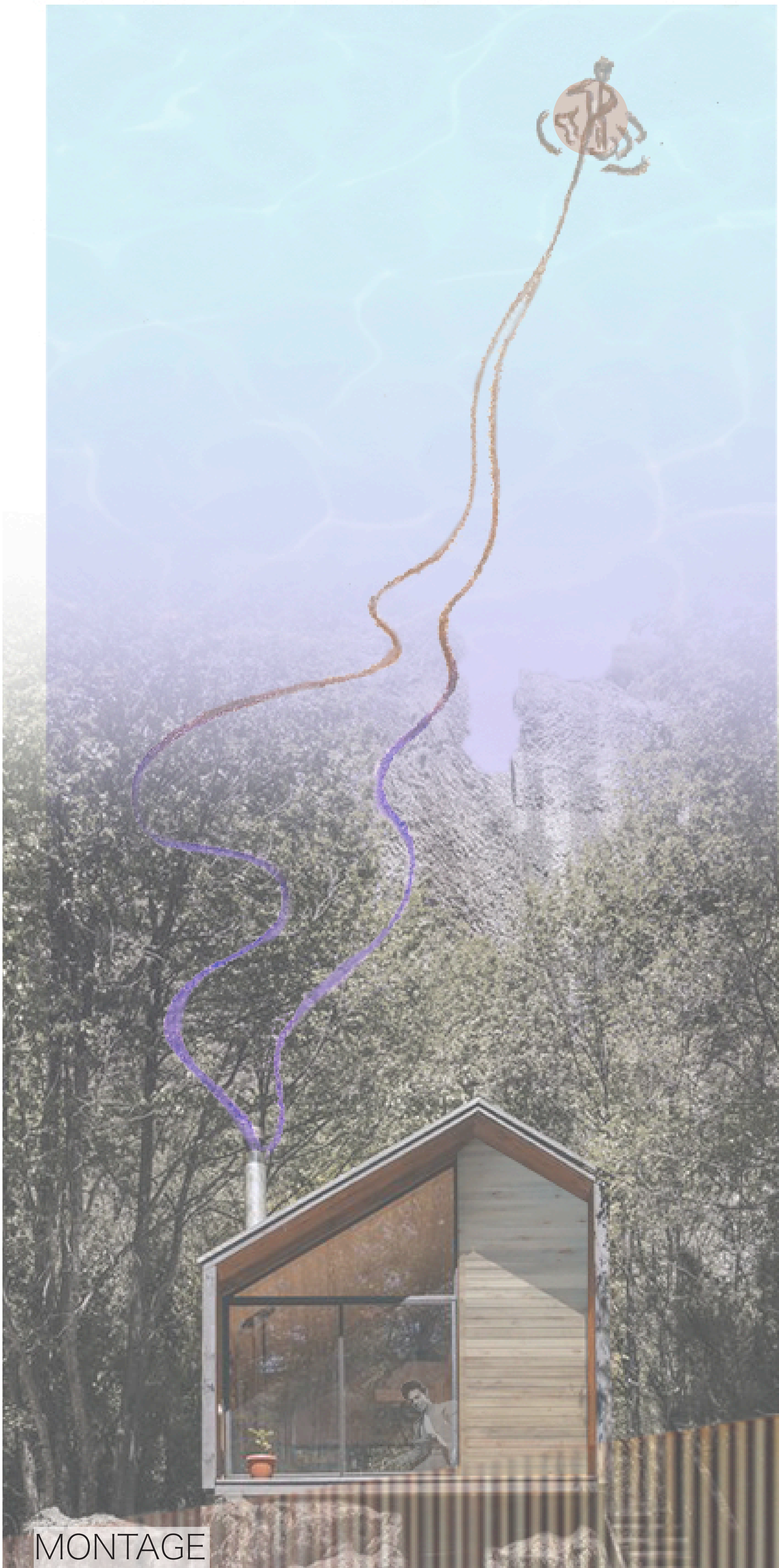
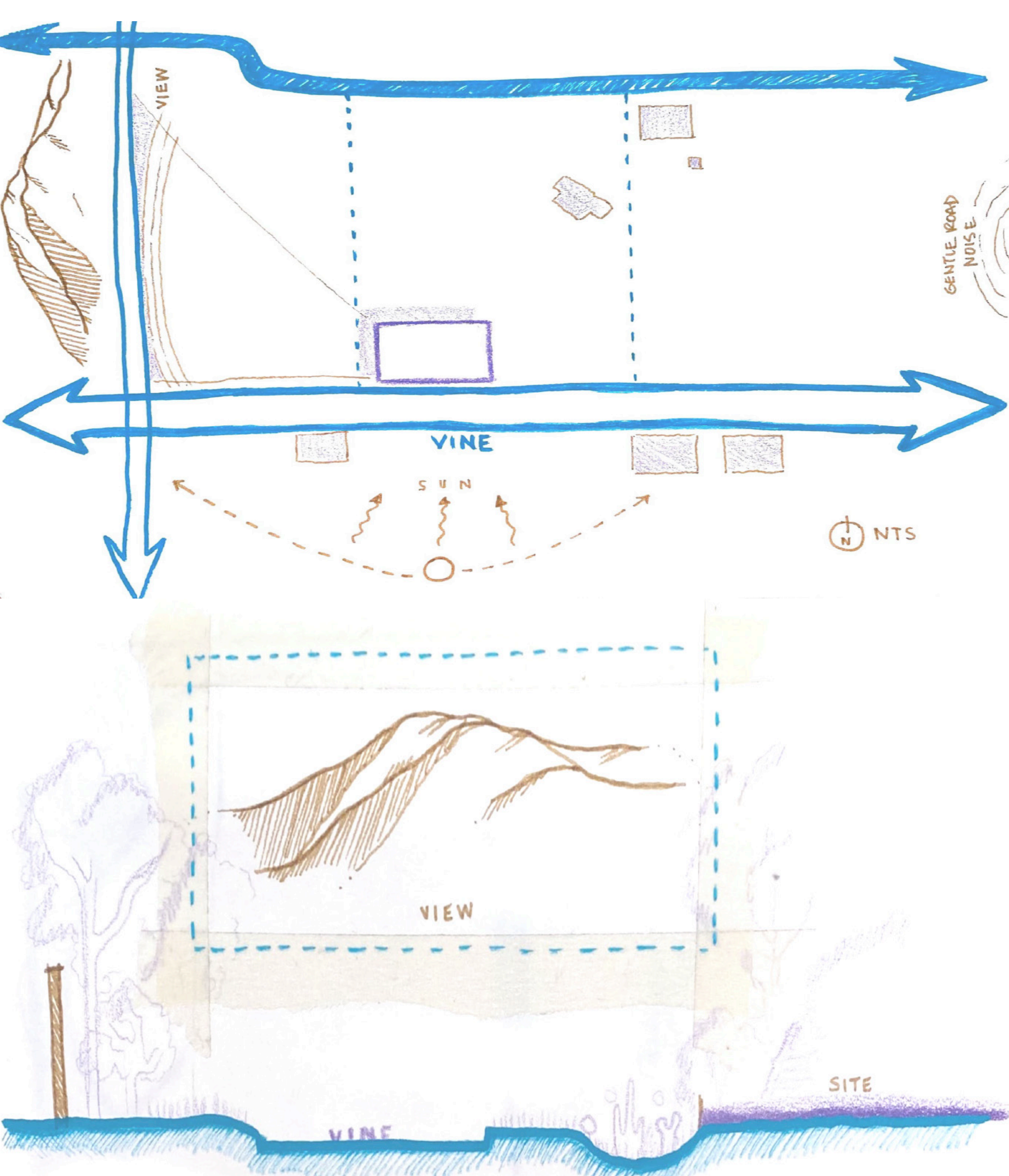
## FLOW OF ENERGY

The client emphasized the importance of his energy within the space. High ceilings and interaction with sunlight are important to this flow.

## PROGRAM DIAGRAMS



## SITE ANALYSIS DIAGRAMS





# SQUARE FOOTAGE

**Bed House:** 7 ft x 10 ft  
70 square feet for resting, private retreat, and storage

**Desk House:** 4 ft x 5.5 ft  
20 square feet for drafting and creative work

**Living House:** 12 ft x 9 ft  
108 square feet for gathering, watching movies, and relaxing by the fire

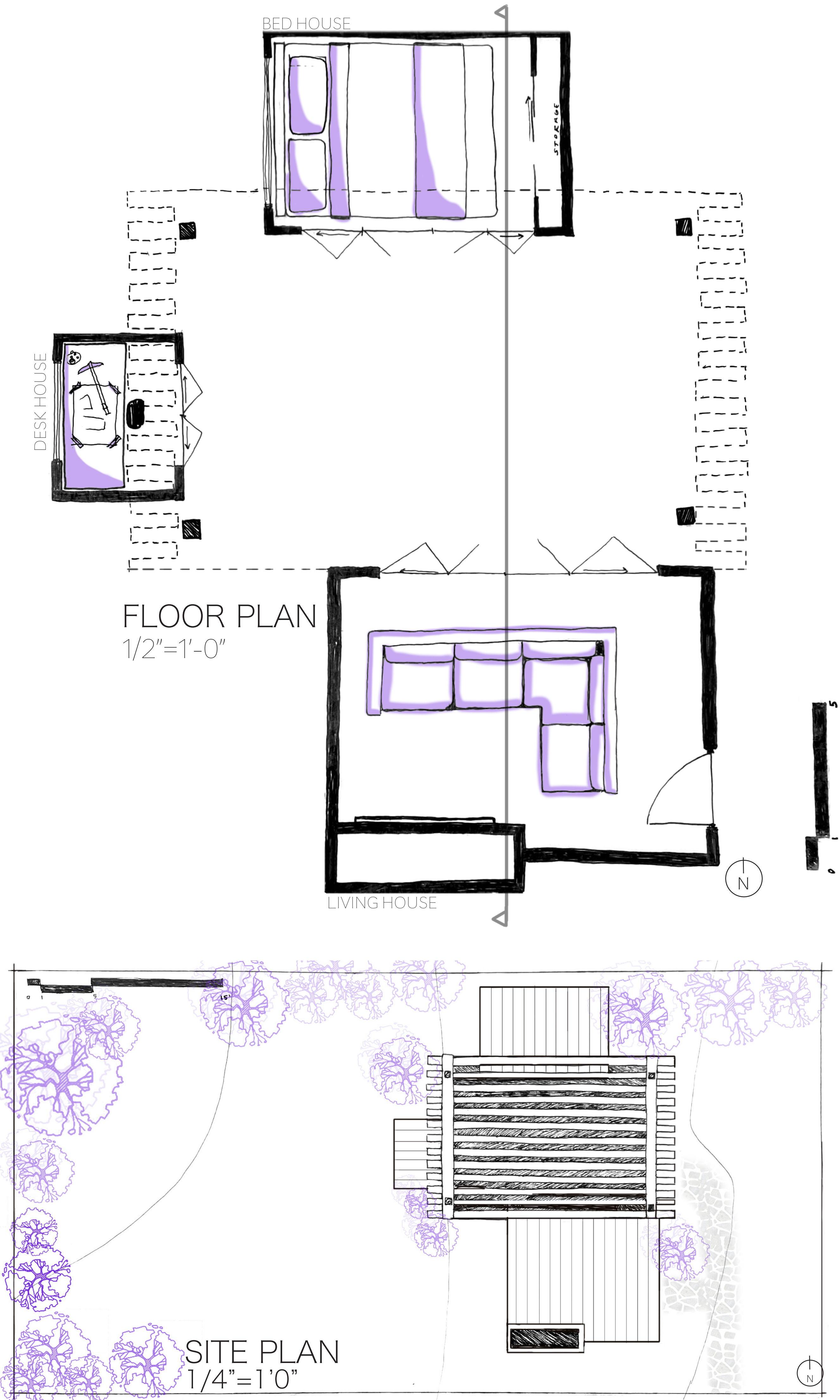
Total built square footage: 200 sqft

# MATERIALITY

**Ribbed steel** roof panels for ease of maintainance and durability

**Beetlekill wood** used throughout each building as per preference of client.Reenforces cabin feel.

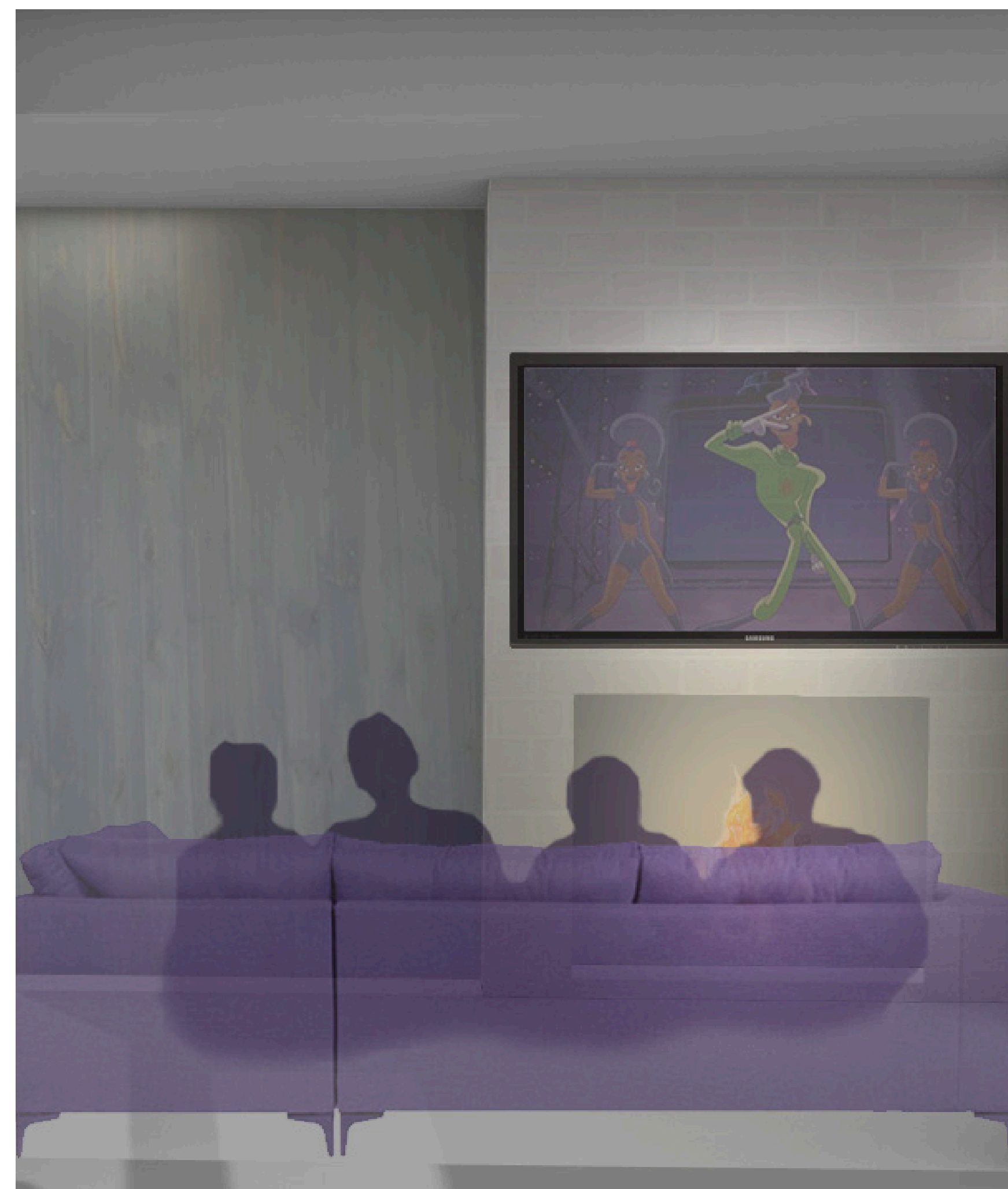
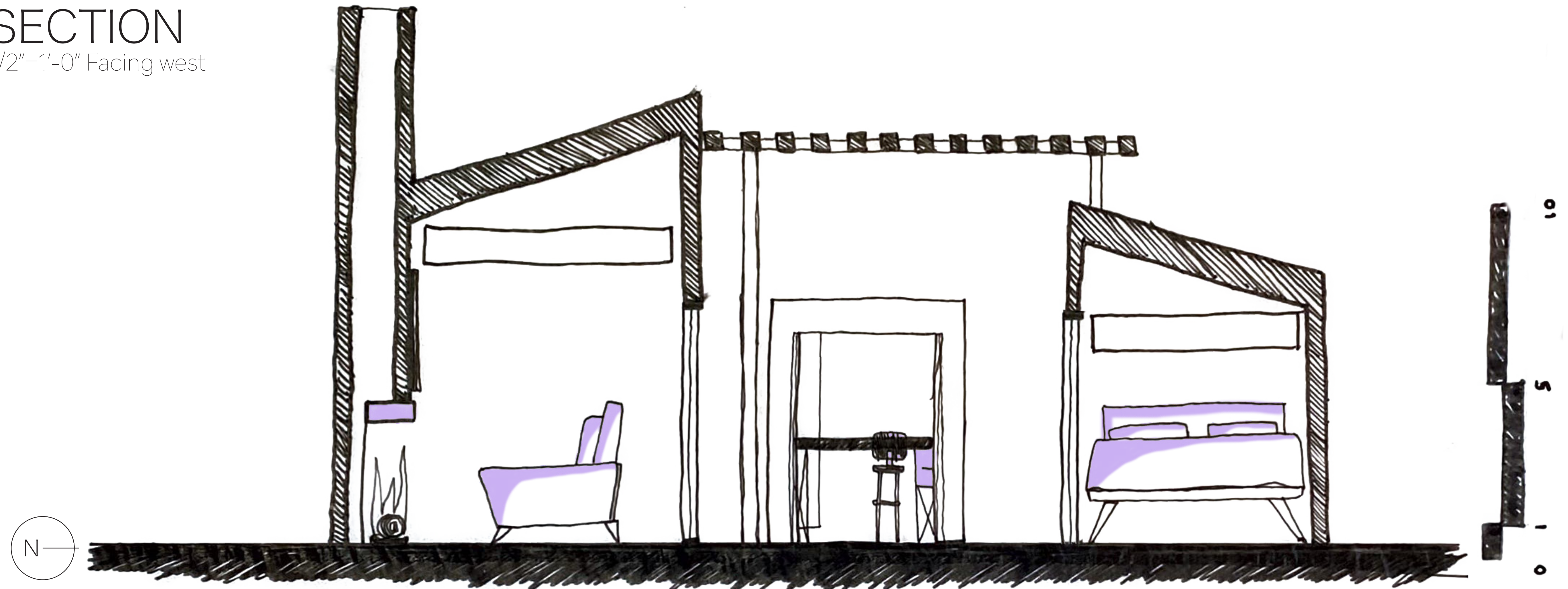
**Brick chimney** provides rich, strong material which acts as centerpiece for the living house interior while maintaining a minimal, clean look.





# SECTION

1/2"=1'-0" Facing west



Living House Rendering  
Interior, facing south



Desk House Rendering  
Interior, facing west



Bed House Rendering  
Exterior, facing north



# FINAL PHYSICAL MODEL

1/2"=1'-0"

