

# HIGHEST ORDER

DESIGNED FOR JOSHUA DUSBABEK  
BY ELISE NORTON

In the morning you'll practice living a story of grace:

sacred threshold,  
web of glass,  
impression, Light,  
paper hand, clear moment of reaching,  
reaching moments like this, briefly--

briefly, you are called to a moment you are reduced by:

long road pulled west, talking to God in your sleep,  
and the sky still rolling rolling rolling  
always forward, always forward,  
is always enough.

You consider what you have and what it means:

sacred threshold,  
web of glass.

The motherland is reduced to sky  
and her love is cruciform.

You, one human of this circle,  
have learned to meet eyes with the Endless Yield and understand:  
Heartland, sky, and sequence.

Reduction, momentum, and Light.

And You, one human of this circle, always eye level,

cleansing yourself to the highest purity,  
clearing yourself of the older order.

## SECTION A

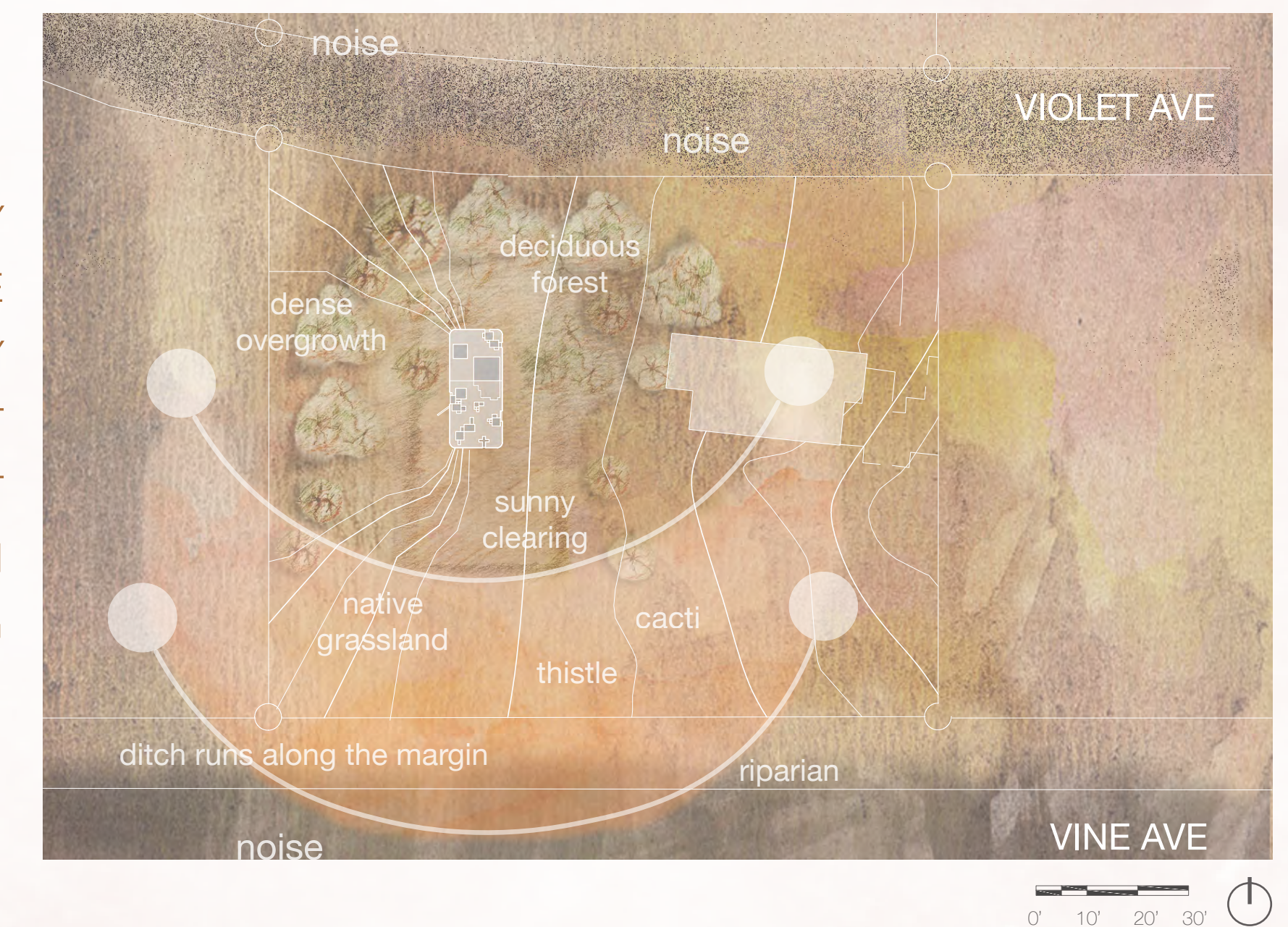


## SITE OVERVIEW AND ANALYSIS

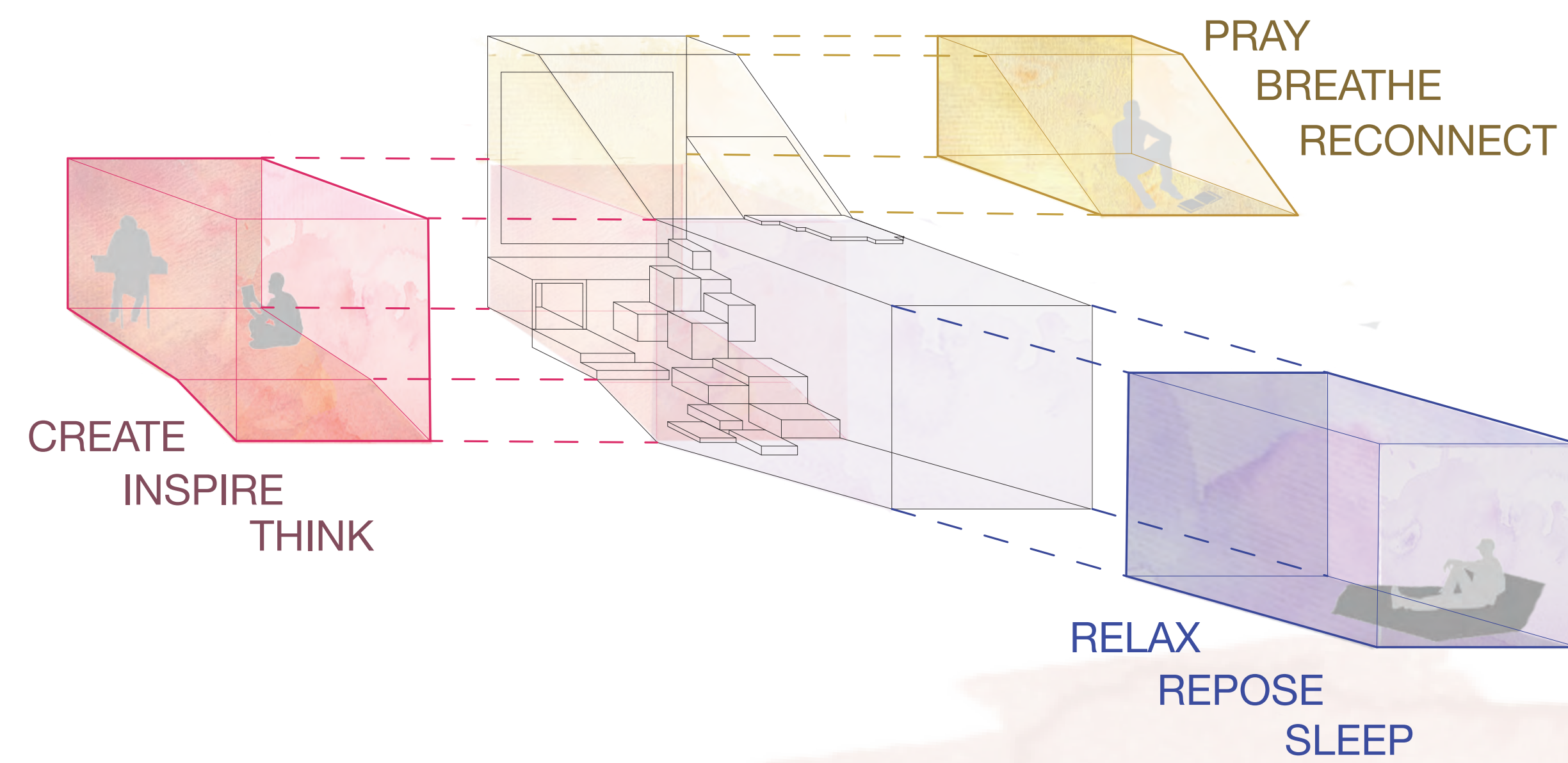


PRIVACY  
TEXTURE  
DENSITY  
CONTRAST  
LIGHT  
OVERGROWTH  
LAYERING

## SITE PLAN



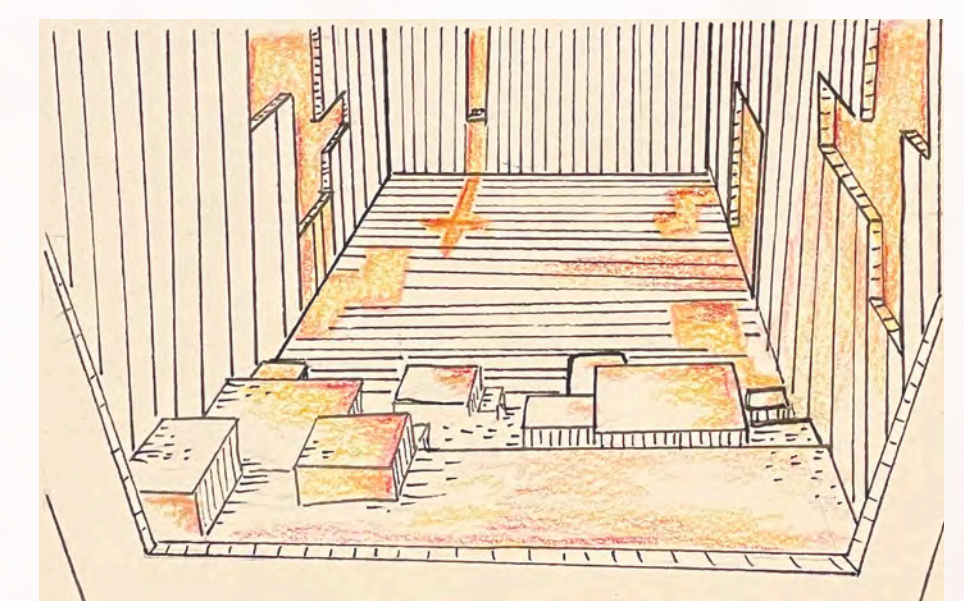
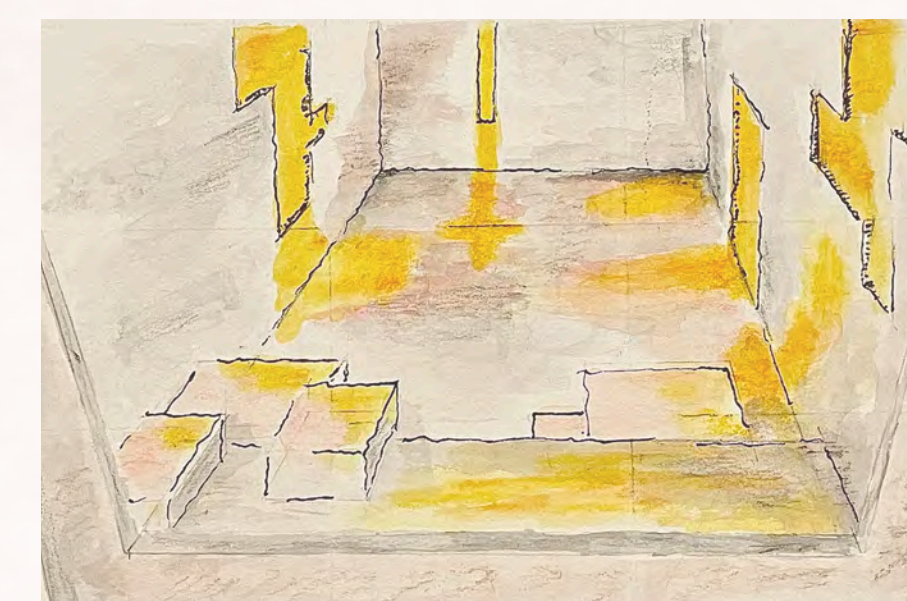
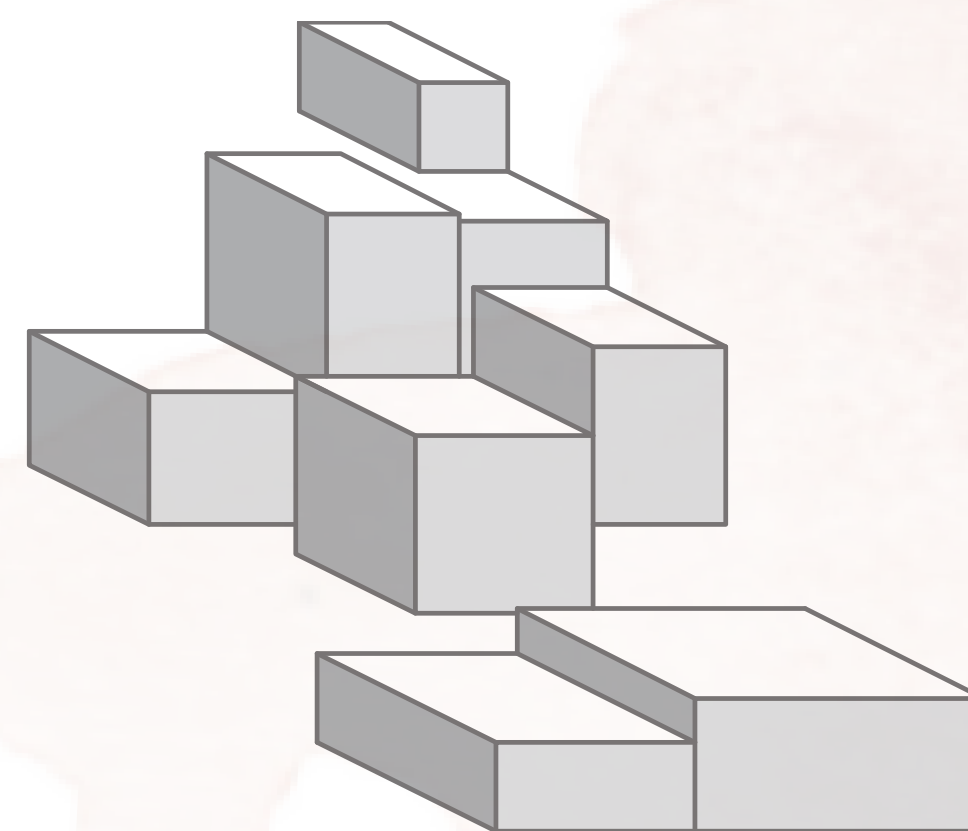
## PROGRAM CONCEPT



## PROJECT OBJECTIVES

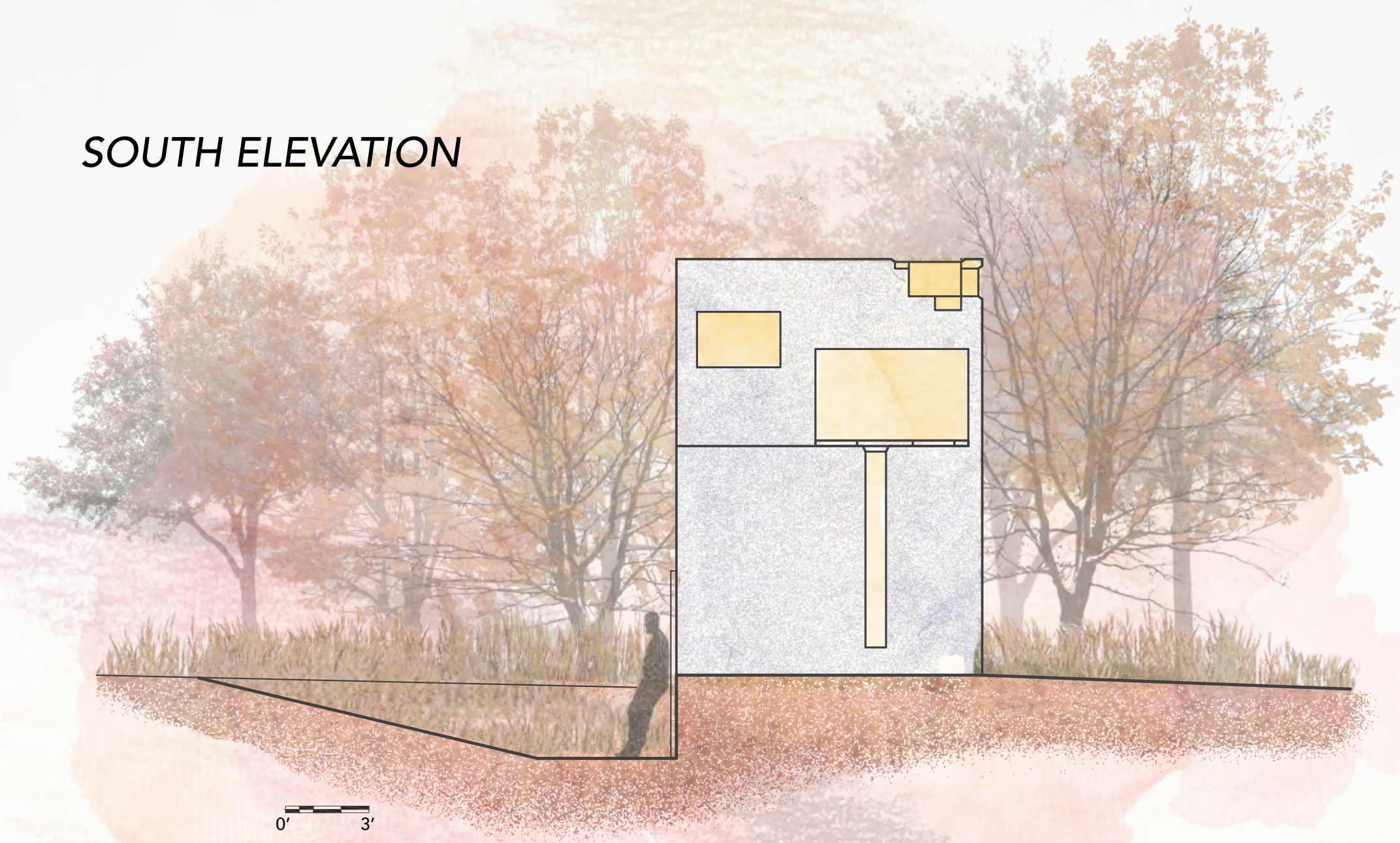
1. Design a retreat energized by vertical engagement, transition, and journey.
2. Create a distinct area for worship that is carefully informed by light.
3. Create a workspace that is continuously inspired by its context; prioritize focus.
4. Program spaces that are visually distinct and separate from each other.
5. Consider multi-use areas to maximize potential of square footage.

## VIEW FROM NORTH EXTERIOR LOOKING IN





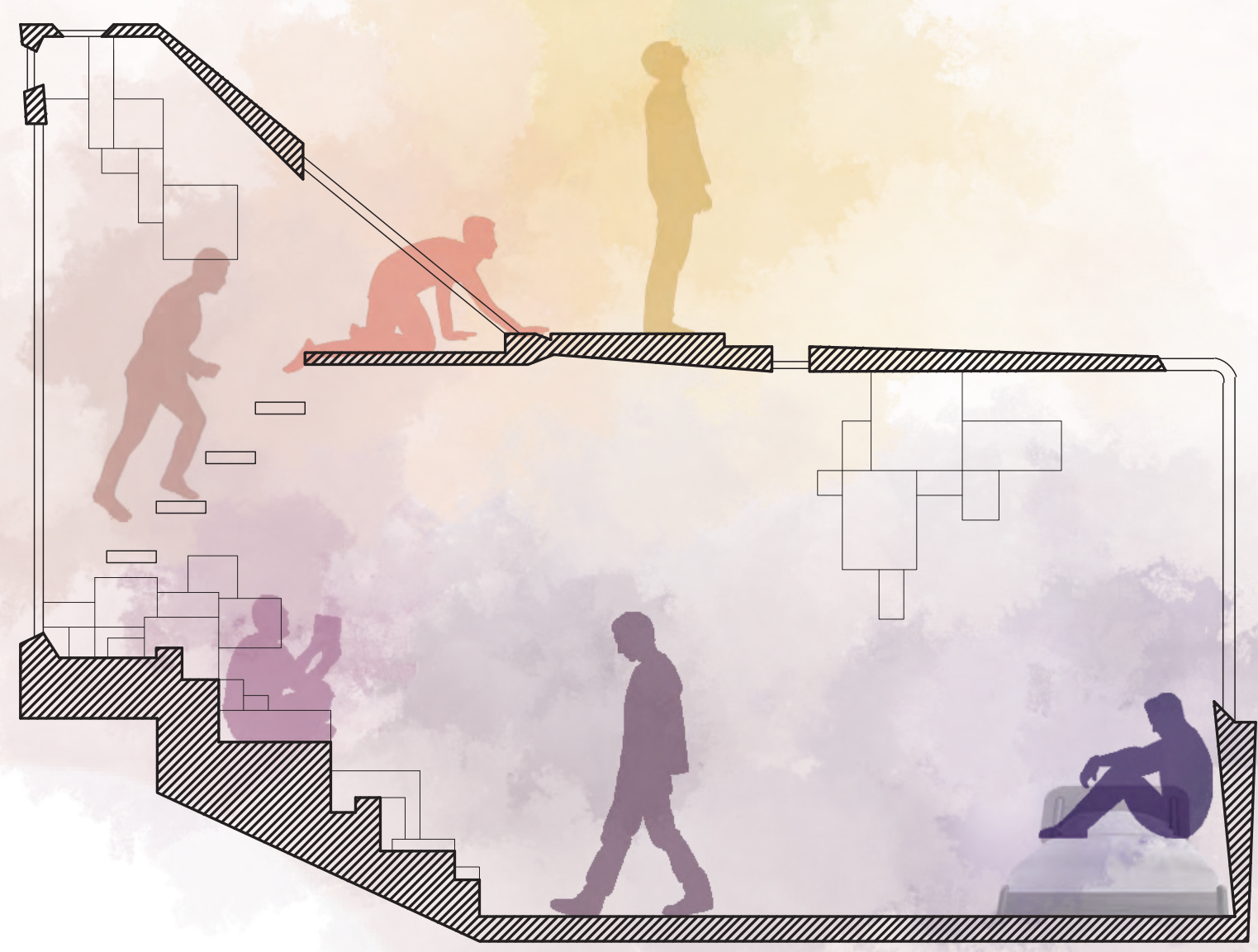
SOUTH ELEVATION



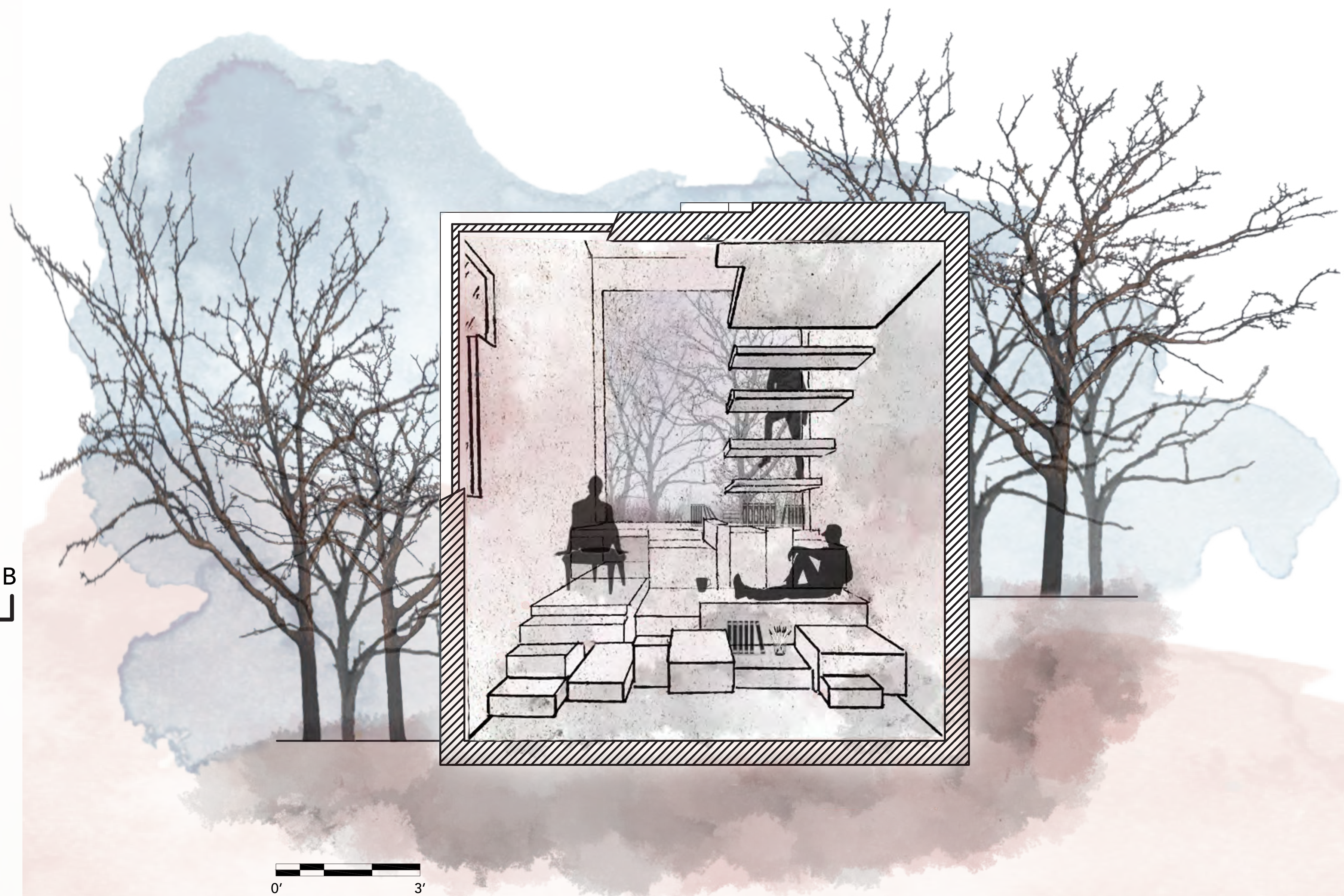
BUILDING SPECIFICITIES AND INTENTION

Materials were folded into a framework that descends into the ground plane and then arises anew. The interior is informed by a similar notion of journey: a strong circulation path vertically guides the client from a place of repose, to a state of creative instigation, and then to the highest order of prayer, connection, and cleansing.

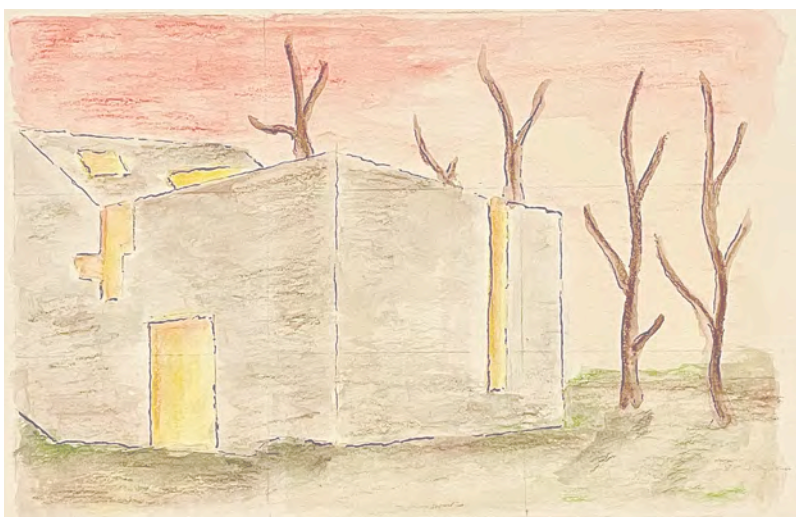
We developed a concept that nurtures the ideal self as it moves from the secular world into the sacred. Just as the floor loses its order and dissolves into something new, the client dematerializes the world he is coming from and is invited to pursue a new, profoundly different path. This project is a study of how the client chooses to project himself onto less-defined areas of transition and threshold. It explores how creative and spiritual potential is spurred into being when in relationship with ideal selfhood, dissolution, and light.



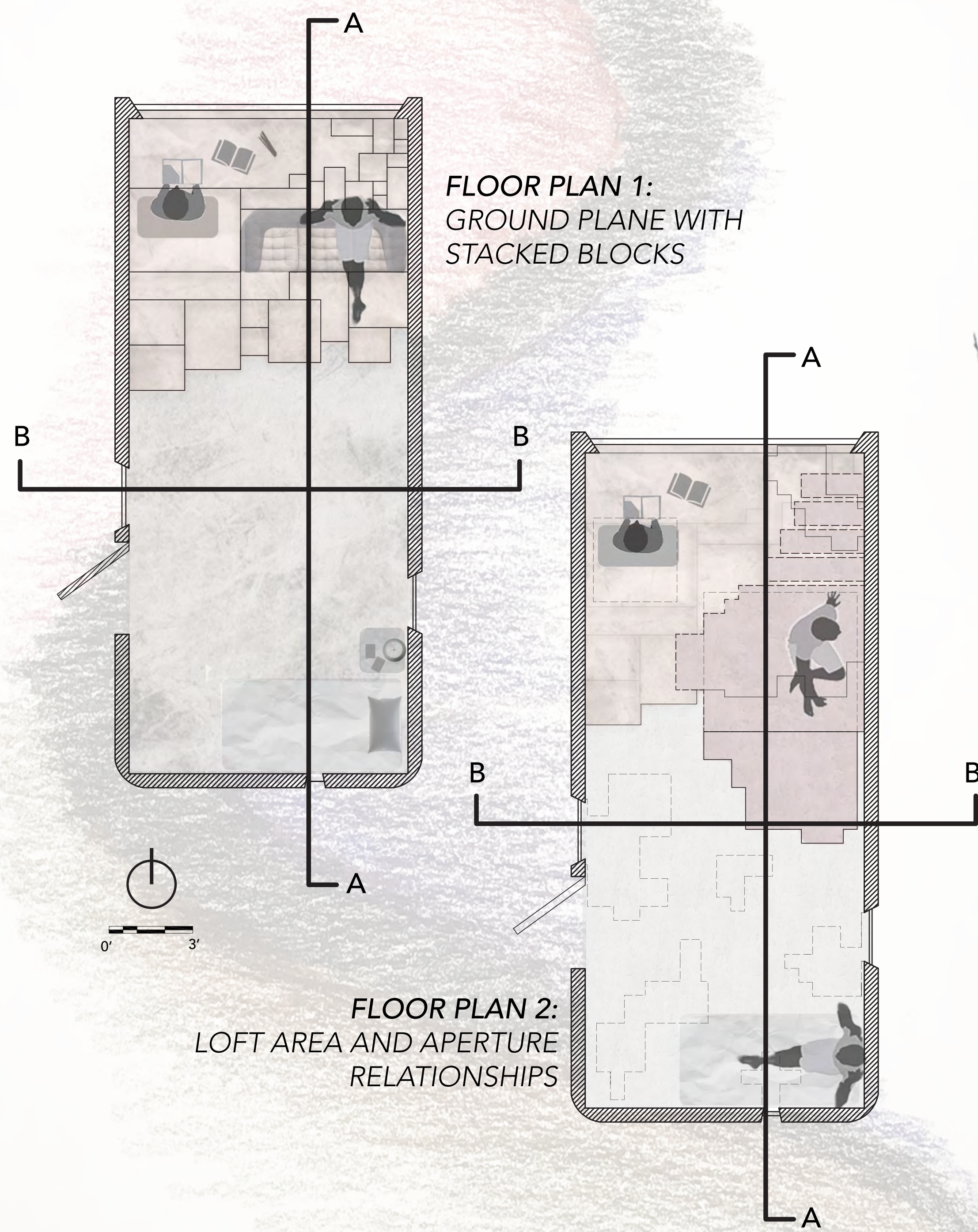
SECTION PERSPECTIVE B



EXTERIOR VIEW



FLOOR PLAN 1:  
GROUND PLANE WITH  
STACKED BLOCKS



FLOOR PLAN 2:  
LOFT AREA AND APERTURE  
RELATIONSHIPS

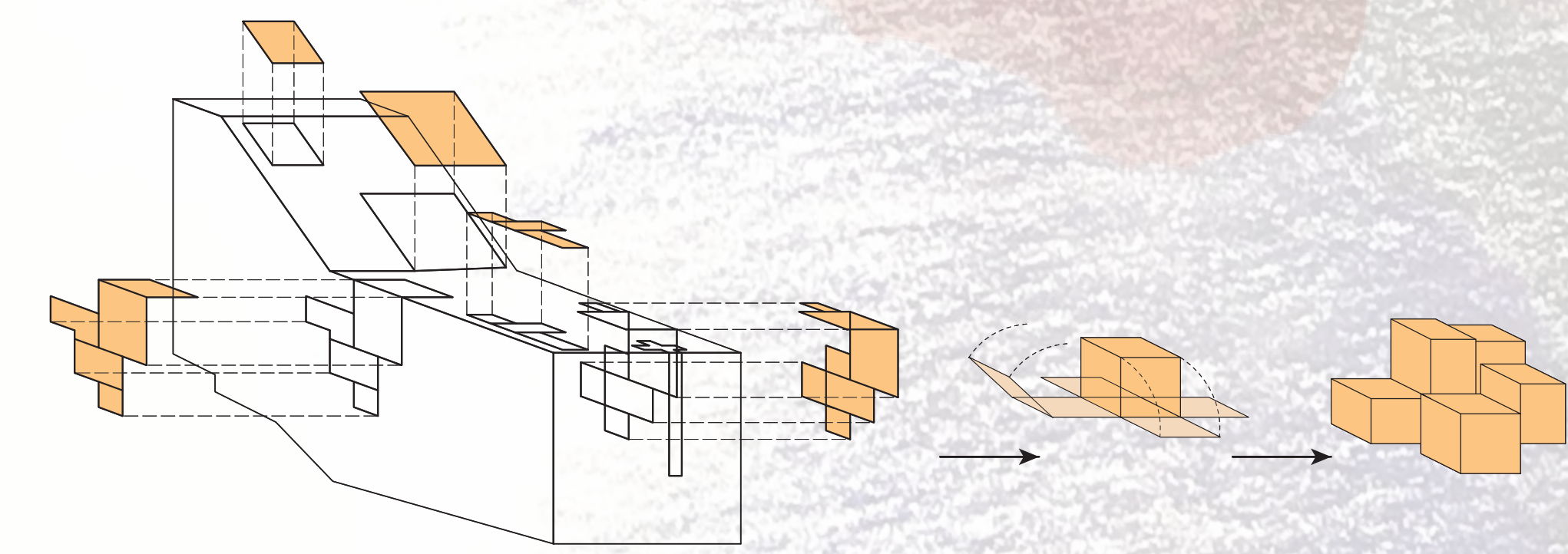




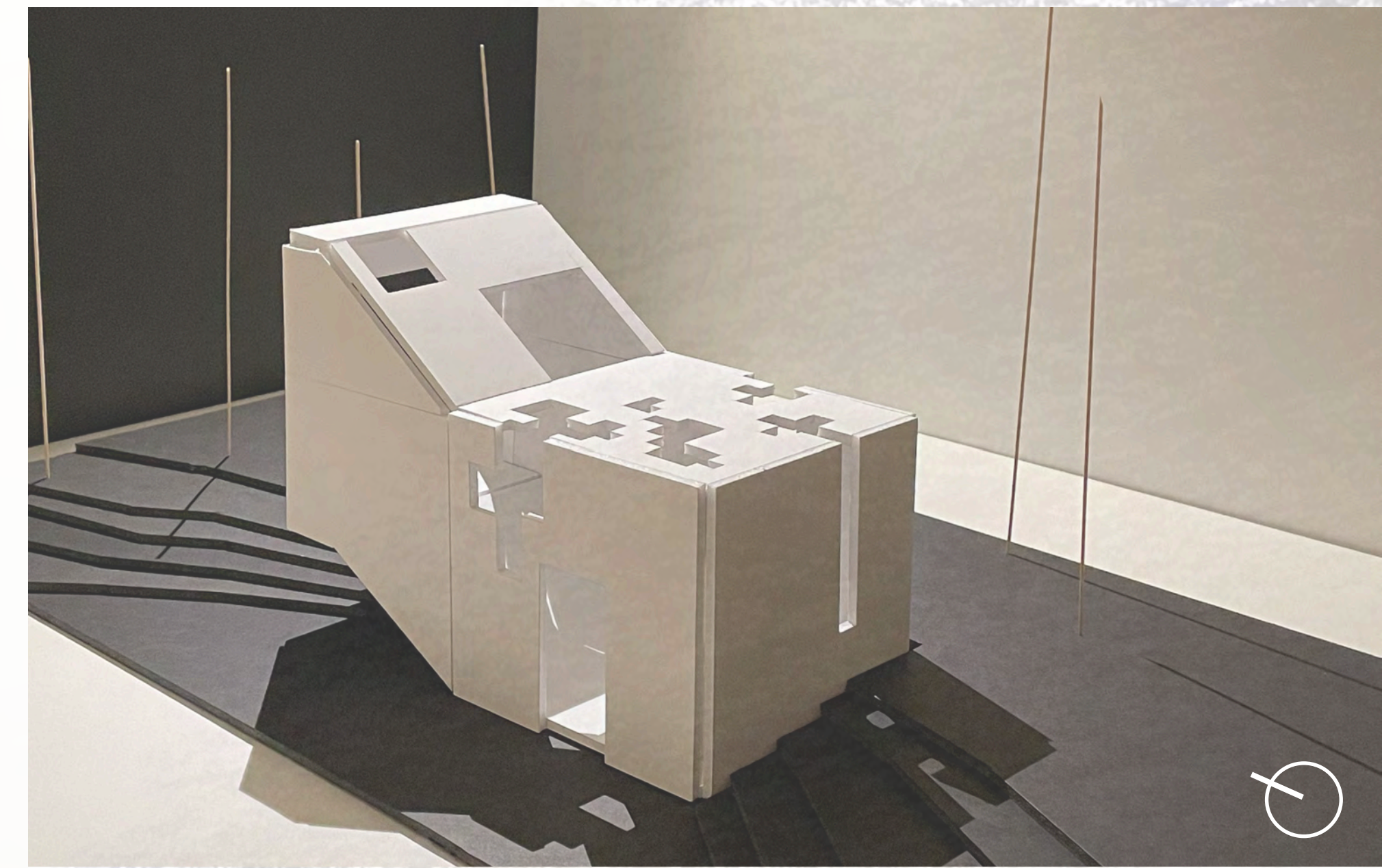
KIT OF PARTS UTILIZATION



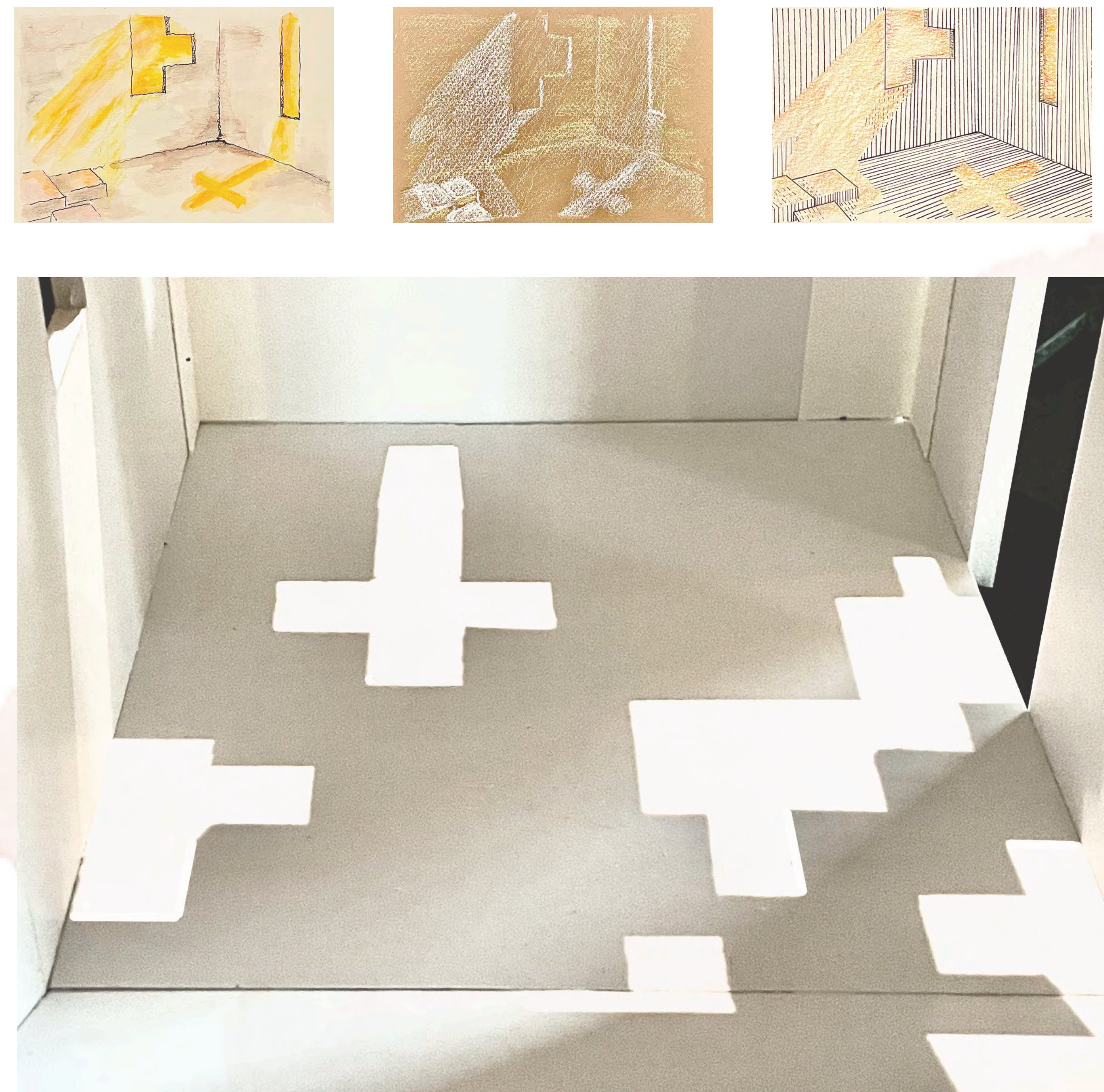
APERTURE CUTOUTS ARE REUSED AS INTERIOR BLOCKS



FINAL MODEL AT 1/2" = 1'0" FOAM CORE AND WOOD



INTERIOR LIGHT



LIGHT CANALIZATION AND INTENTION

The irregular, dissolving shapes of the apertures directly relate to the geometric floor. As the stacked blocks capture light and shadow, they become increasingly prominent, glistening, and deep. The diffusion of light over the blocks becomes a transient building material, reconnecting the client with the sky. A cruciform skylight sweeps along the south side throughout the day.

Eye level views are strictly limited to the elevated north window, which opens onto clusters of dense vegetation. As a result, the sequence of the building becomes focused and points of relationship to the outside are strictly vertically oriented.

APERTURE AND GROUND PLANE

