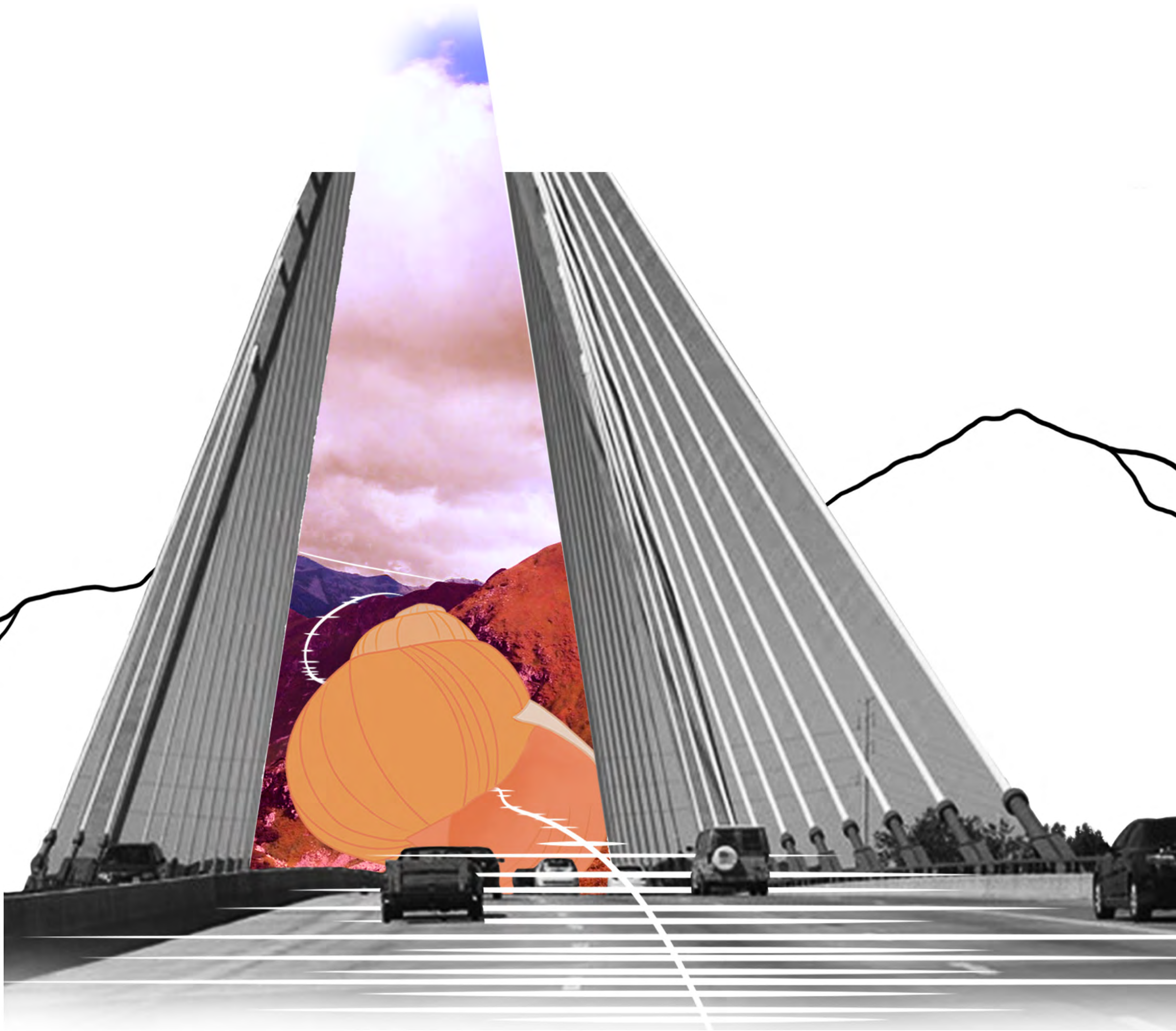


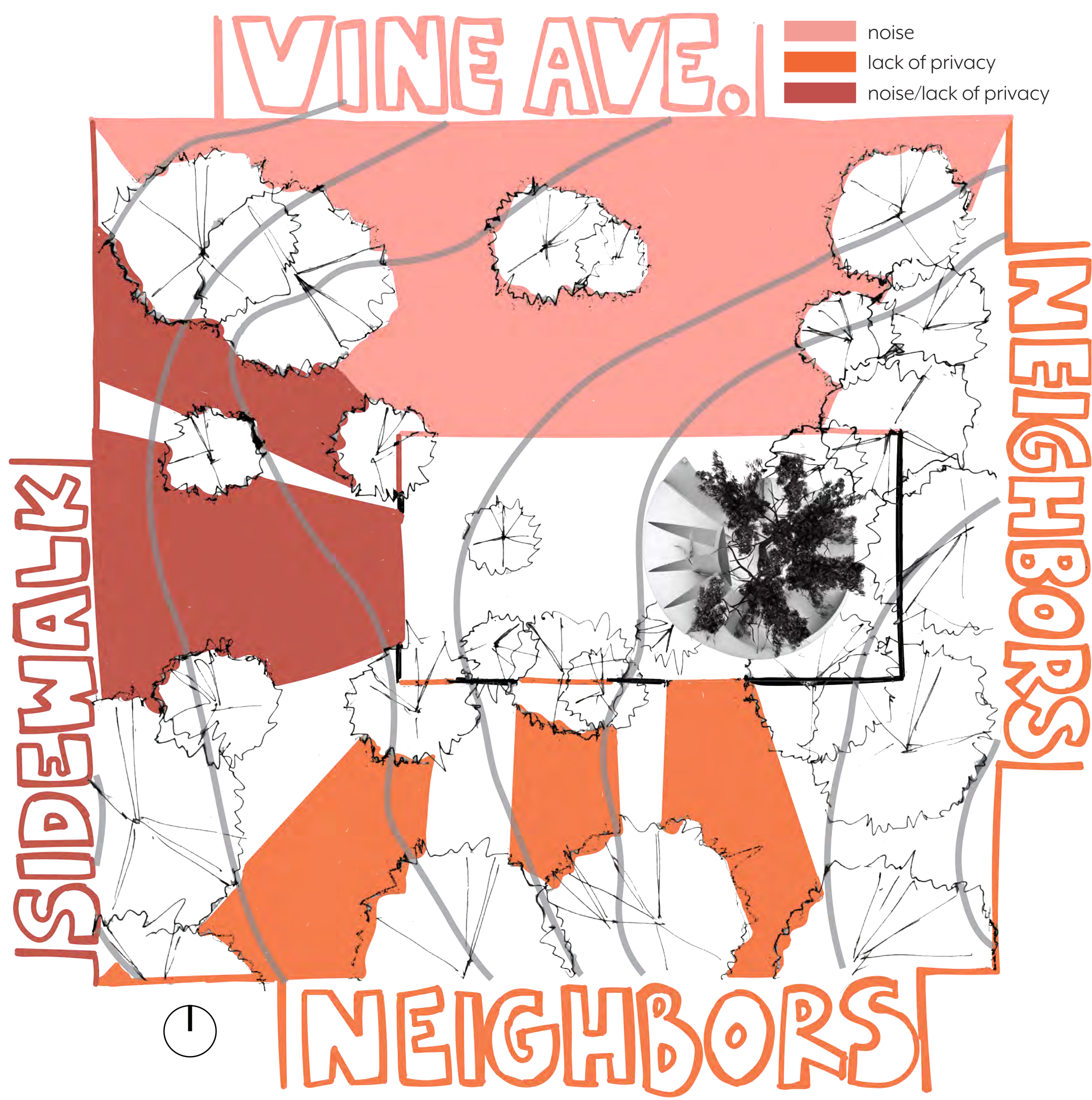
shell

for Betsy Glutova

Within the populous city of Boulder lies a hidden retreat akin to a snail's shell. Like the snails rescued by a young Betsy from torrential downpours in the lush escapes of Slovakia, so Betsy is swept from the grasps of responsibility, deafening noises, and the hustle and bustle of 100,000 people and into a safe haven of her own, where productivity amounts to lounging the day away. Betsy's shell allows her to practice the self-care missing from her life, soothing her body with teas and baths accompanied by natural light, neutral tones, and the feeling of nature sweeping right from the surroundings and into her very hands. An experience of content, peaceful solitude is the essence of this shell.



site analysis



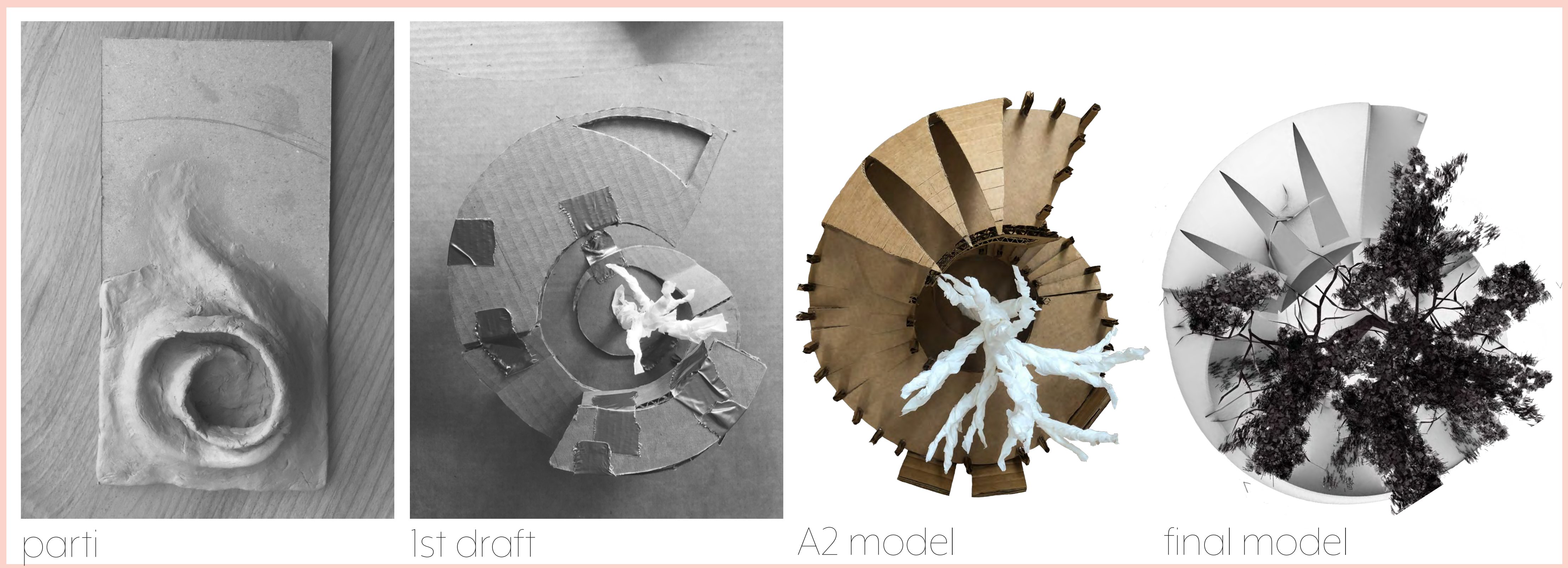
design objective: self-care

feelings/experience
escape quiet solitude peace
-through-

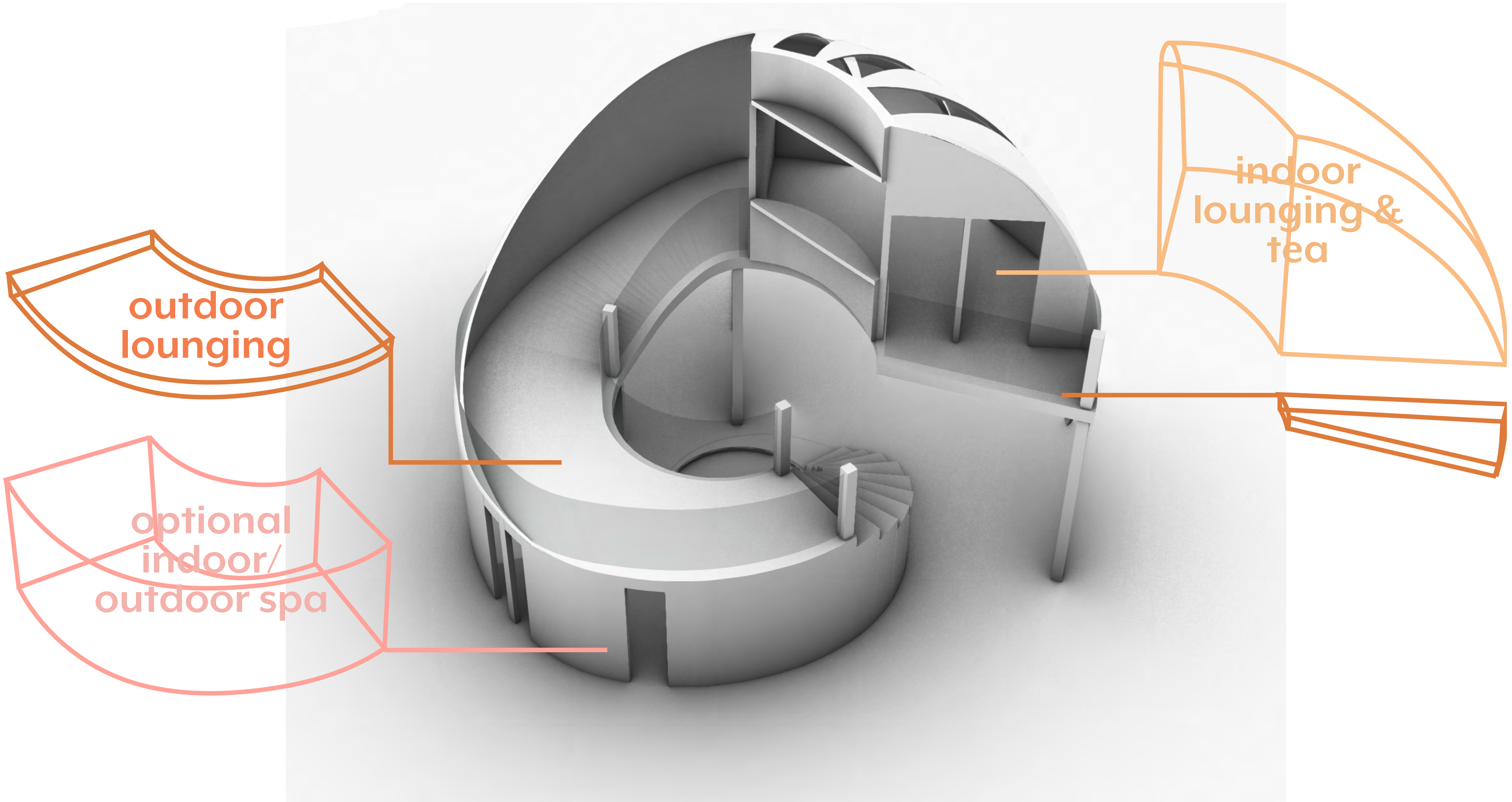
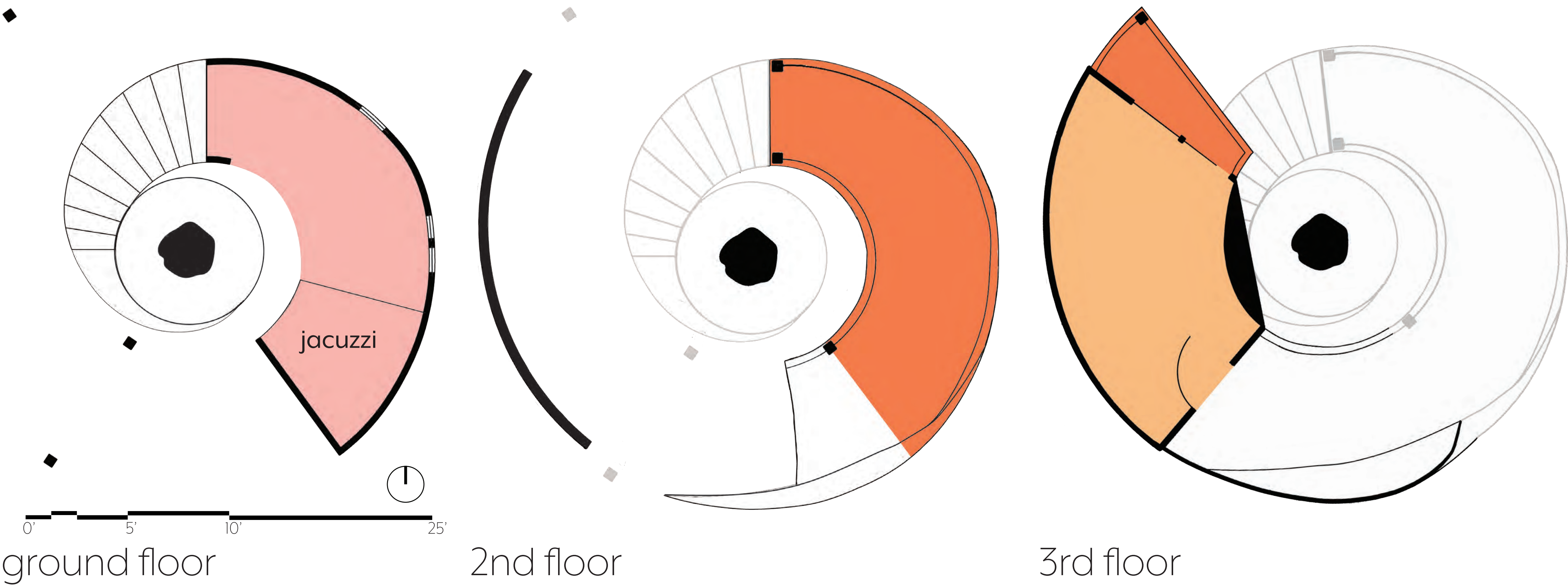
rituals
tea lounging bathing
-supported by-

physical factors
open space neutral colors natural light

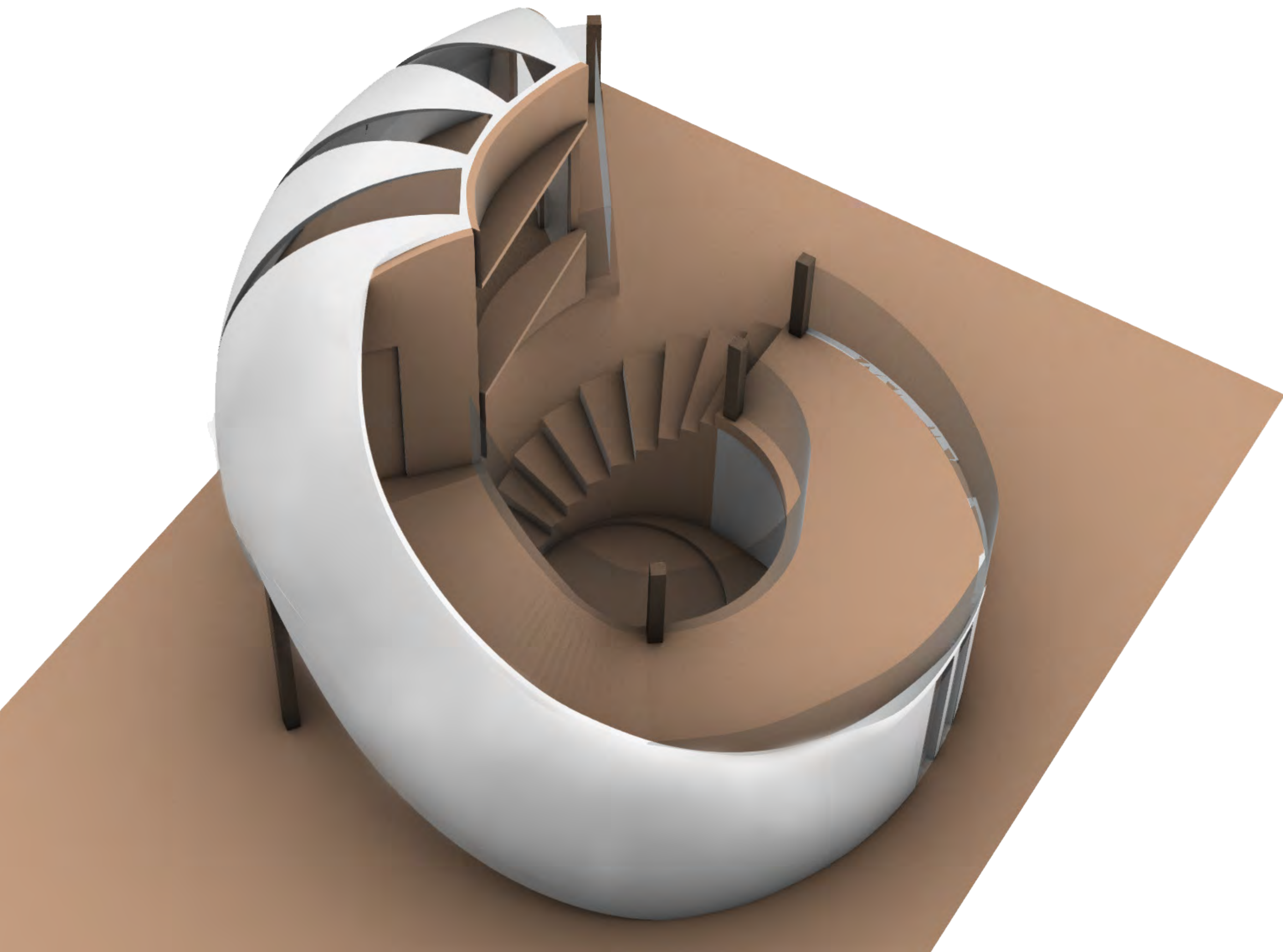
design morphology



self-care rituals



kit of parts



- cardboard sheets x10
- cardboard dowels x4
- bristol sheets x3



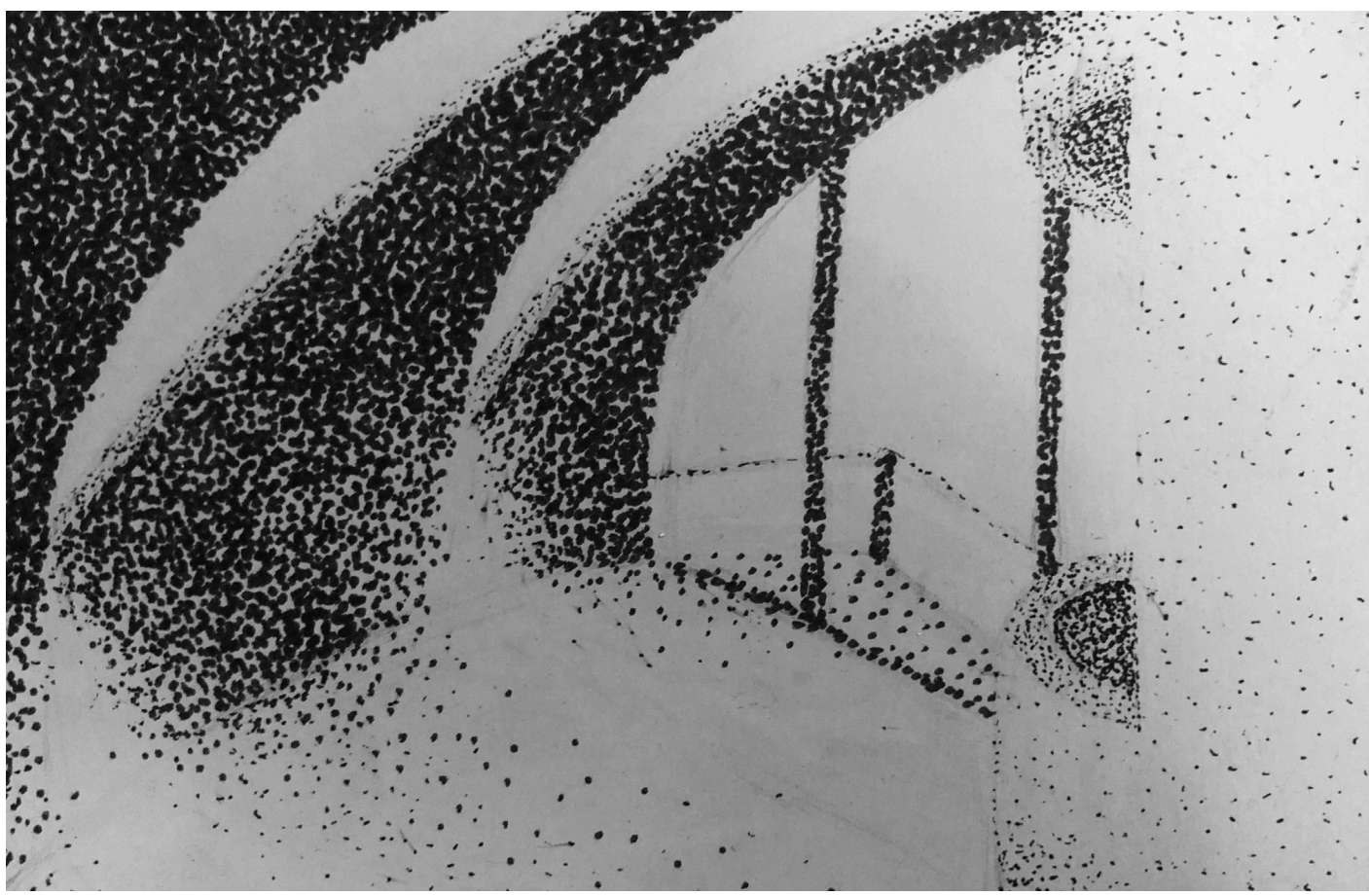
top view



section

a shelter among the treetops

light studies



the canalization of light through triangular windows serves to allow plenty of light while mainting privacy and shelter



the inner courtyard is a show of evanescense; the casted shadow of the tree moving about the circular structure as the day passes by, bathing it in soft shadow but maintaining a warm, welcoming glow throughout.



section perspective



physical model (A2)

