

**MORAL HAZARD, WILDFIRES, AND THE
ECONOMIC INCIDENCE OF NATURAL
DISASTERS**

Patrick Baylis

Vancouver School of Economics, University of British Columbia

Judson Boomhower

University of California, San Diego

December, 2018

Working Paper No. 18-044

Moral Hazard, Wildfires, and the Economic Incidence of Natural Disasters

Patrick Baylis Judson Boomhower*

December 26, 2018

We measure the degree to which large government expenditures on wildland fire protection subsidize development in high risk locations. A substantial share of the total social costs of wildfires comes from federal firefighting efforts that prevent or reduce property loss. We assemble administrative data from multiple state and federal agencies to calculate the expected cost to the government of protecting at-risk homes from wildfire, in great spatial detail and for the entire western United States. To do so, we first measure the causal impact on firefighting costs when homes are built in harm's way. We then add up historical protection expenditures incurred on behalf of each home and calculate an actuarial measure of expected future cost. This measure is increasing in fire risk and surprisingly steeply decreasing in development density. In high-cost areas, the expected present value of fire protection exceeds 10% of a home's transaction value. We consider the potential for these subsidies to distort location choice, development density, and private investments in risk reduction.

*(Baylis) Vancouver School of Economics, University of British Columbia; pbaylis@mail.ubc.ca. (Boomhower) University of California, San Diego; jboomhower@ucsd.edu. The authors gratefully acknowledge research support from the Stanford Institute for Economic Policy Research (Boomhower), the Stanford Center on Food Security and the Environment (Baylis), and the Giannini Foundation. We are grateful to seminar participants at the NBER Summer Institute, Arizona State University, Stanford University, UC Berkeley, UC San Diego, Penn Wharton, University of British Columbia, University of Ottawa, Indiana University, University of Southern California, the UC Santa Barbara Occasional Workshop, the Heartland Workshop, and the AERE Summer Conference.

1 Introduction

Driven by climate change, expanded development in high-risk locations, and other factors, annual wildland firefighting costs for the U.S. federal government have more than doubled in real terms over the past 30 years and are expected to continue to grow.¹ Every summer and fall, tens of thousands of firefighters and many millions of dollars worth of equipment and aircraft are continuously dispatched throughout the western United States. Their costly, dangerous work is often explicitly targeted at preventing damage to private homes. While decisions about where and how to build these homes are largely made by localities and individual homeowners, much of the cost of defending them is borne by the federal and state governments.

This apparent misalignment of incentives is due to the historical development of fire management and land ownership in the United States. While fire protection in cities has long been the responsibility of local governments, fire management for the huge public forests and grasslands that pervade the western part of the country is the task of the U.S. Forest Service (USFS) and other federal and sometimes state agencies. Rapid suburban and exurban home development starting in the second half of the 20th century increased the number of homes bordering these public lands (Radeloff et al. 2005; Radeloff et al. 2018). Because of the way financial and operational responsibility for firefighting is assigned, federal and state agencies are responsible for fighting many of the wildland fires that threaten these homes.

In addition to higher overall fire risk, the spatial variability of fire risk in these “wildland-urban interface” (WUI) areas is larger than within cities. Historical institutions for protecting urban homes did not disproportionately benefit particular property owners or neighborhoods, since urban fire risk is relatively homogeneous. In comparison, wildland fire risk is highly differentiated according to topography, vegetation, and climate. Predictably high-risk areas suffer repeated, costly fires while lower risk places experience few or none.

The combination of publicly provided fire protection and large spatial heterogeneity in risk has two important implications. First, because the federal government bears a large share of wildland firefighting costs, firefighting represents a transfer of wealth to a relatively small group of homeowners in locations with high fire risk. Second, the

¹National Interagency Fire Center. “Federal Firefighting Costs (Suppression Only)”. 2017.

guarantee of federal protection generates moral hazard. Homeowners do not internalize the expected costs of future fire protection when choosing where to live or how to design and maintain their homes. Perhaps just as importantly, local governments do not internalize firefighting costs when making zoning, land use, and building code decisions.

These uninternalized firefighting costs represent a major component of the total social cost imposed by wildfires. Wildfires are unusual among natural hazards in that it is feasible to prevent property damage during an incident through large investments of manpower and equipment. Unlike cyclones or earthquakes, for example, wildfires can often be stopped in place to protect homes and other valuable assets. This means that a large share of the costs imposed on society by wildfires come in the form of extremely costly efforts to prevent property damage. During 1985–2017, total wildfire property damages in the United States were \$51 billion, while direct firefighting costs for federal agencies alone totaled \$43 billion.² Public spending on floods, cyclones, and other disasters comes largely in the form of rebuilding grants or insurance subsidies to individual households. Identifying the beneficiaries of such spending is comparatively straightforward. Because so much of wildfire spending comes instead through firefighting expenditures, understanding the beneficiaries of that spending requires a more involved analysis that has not previously been undertaken.

In this paper, we quantify the economic consequences of America’s wildfire institutions. We provide the first estimates of the implicit transfer to homeowners due to fire protection at the individual parcel level for homes throughout the western United States. To do so, we combine parcel-level data on the universe of single family homes in the West with administrative data on historical firefighting expenditures to estimate federal government expenditures dedicated to protecting each home from wildfires. We assemble the firefighting cost data from administrative records of six different federal and state agencies, which we obtained through multiple Freedom of Information Act and public records requests. This yields the most comprehensive dataset on wildland firefighting expenditures in existence. Our empirical approach

²The five most-damaging fires during this time period accounted for 55% of all property losses (including the 2017 “Wine Country” fires in Northern California that caused \$13 billion in losses). Unofficial estimates for the 2018 Camp Fire in northern California project damages of about \$10 billion. Damage data are from Munich RE NatCatService and are overall losses (insured and uninsured) for wildfires and heat waves in the United States. Firefighting costs are from National Interagency Fire Center, “Federal Firefighting Costs (Suppression Only)”. All values are in 2017 dollars.

takes advantage of variation in ignition locations to measure how incident-level fire-fighting expenditures increase when homes are built in harm's way. We then use these estimates to construct an actuarial measure of the expected additional future cost to the government to protect each home from wildfires.

We find that residential development dramatically increases firefighting costs. Efforts to protect private homes appear to account for the majority of wildland firefighting expenditures. Perhaps more surprisingly, once development reaches a relatively low density threshold, further increases in the number or total value of threatened homes have little effect on firefighting costs. This non-rival aspect of fire protection means that development density is an important determinant of per-home protection cost. Overall, we find that firefighting represents a strikingly large transfer to a few landowners in high-risk, low-density places. In our highest-risk categories, the net present value (NPV) of fire protection costs exceeds 10+% of the transaction value of the property.

These implicit subsidies imply potentially significant efficiency costs. We discuss possible distortions along three margins. The first is the location of new residential development. Because new development is relatively price-elastic in regions with high fire protection costs, there may be substantial excess development in high-cost areas. Second, providing fire protection for free reduces incentives to capitalize on the economies of density that we measure, effectively subsidizing large lot sizes and low-density development. To the extent that sprawl also results from other preexisting market failures, this subsidy exacerbates those inefficiencies. Finally, freely-provided fire protection could reduce private construction and maintenance investments that also protect homes. The promise of an aggressive firefighting response at no cost may reduce private incentives to choose fire-proof building materials and clear brush around homes, actions that can decrease the threat to homes during a wildfire. Similarly, federally-financed firefighting limits incentives for cities and states to create and enforce wildland building codes and defensive space regulations.

These distortions could be mitigated through policies that lead individuals and localities to internalize a larger share of firefighting costs. We discuss several possible policy interventions. The empirical approach in this study can be used to calculate a differentiated fire protection fee that would lead developers or cities to internalize the expected future costs of firefighting imposed by new construction in currently

undeveloped areas.

From a fiscal perspective, our results imply that wildland firefighting is a previously-unappreciated mechanism for redistribution to particular geographic areas. For example, we find that the annual implicit subsidies to homeowners in Montana and Idaho via firefighting are larger than federal transfers to those states under the Temporary Assistance to Needy Families program (TANF).³ Contrary to conventional wisdom, we do not find that federal fire protection spending is regressive. This is because fire protection costs are highest in rural and ex-urban parts of the West where incomes and land values are generally low.

The importance of the issues we consider will continue to increase. Foresters and ecologists predict considerable new construction over the next several decades in fire-prone locations throughout the West that currently have no or very little development (Gude, Rasker, and Noort 2008). Mann et al. (2014) forecasts that land use changes in California through 2050 will be dominated by the conversion of undeveloped or very sparsely developed areas to low- and medium-density housing use. Much of this new development is predicted to occur in areas that the state has designated as “very high” wildfire risk zones. At the same time, climate change is predicted to lead to more severe and more frequent wildfires.

More broadly, this study underscores the importance of institutions in responding to the impacts of climate change. Floods, cyclones, landslides, heat waves, droughts, and wildfires are all predicted to increase in frequency and severity as the Earth warms.⁴ Many important adaptive responses to these and other impacts of climate change are likely to occur through government investments in public goods like infrastructure, national security, scientific research, public health, emergency response, and other areas. These large public investments may lessen the costs of climate change, but they also raise pressing economic questions about moral hazard, distributional impacts, and allocative efficiency.

³Federal TANF expenditures in FY2016 were \$32 million for Montana and \$26 million for Idaho. U.S. Dept. of Health and Human Services, Office of Family Assistance, “TANF Financial Data - FY 2016”, published February 2018. See sheet C.1.

⁴For a review of natural disasters and climate change, see IPCC, 2012: Managing the Risks of Extreme Events and Disasters to Advance Climate Change Adaptation. [Field, C.B., V. Barros, T.F. Stocker, D. Qin, D.J. Dokken, K.L. Ebi, M.D. Mastrandrea, K.J. Mach, G.-K. Plattner, S.K. Allen, M. Tignor, and P.M. Midgley (eds.)]. Cambridge University Press, Cambridge, UK, and New York, NY, USA.

Our analysis has specific parallels to flood risk, where economists have long suspected that subsidized federal flood insurance and ex-post rebuilding assistance may encourage high-risk development. Kousky, Luttmer, and Zeckhauser (2006), Smith et al. (2006), and Boustan, Kahn, and Rhode (2012) consider the effects of floods and flood-related public policies on location decisions. Gregory (2017) studies the effect of federal rebuilding grants on homeowners’ decisions to return to New Orleans following Hurricane Katrina, finding modest distortions. Much of this work focuses on the decision to rebuild in flood risk areas after losses. The decision to rebuild in a place where one already lives seems likely to be less price-elastic than new development in currently undeveloped areas with high fire risk. Moreover, we show that for wildfires micro-scale within-city variation in risk and thus implicit subsidies is also important, increasing the potential for subsidies to distort decisions.

This paper makes several contributions. We demonstrate the importance of public defensive expenditures in lessening property damage from wildfires, and consider how this implicit subsidy affects incentives for private homeowners and local governments. Introducing administrative data on firefighting expenditures allows us to provide the first quantitative estimates of the spatially-differentiated implicit subsidy, and thus the optimal “fire protection fee” for every home in the western United States. Researchers and policymakers have long suspected that federal firefighting affects local incentives, but ours is the first paper to measure these subsidies.⁵ We also present novel evidence of a non-linear response of firefighting costs to the number of threatened homes, with important implications for the effect of freely-provided firefighting on development density. From a methodological perspective, the introduction of parcel-level data on 18 million western homes allows us to be geographically precise about risks and costs relative to existing work on wildfires that relies on spatially coarse administrative boundaries. This specificity represents a valuable advance since fire and other disaster risks can vary substantially over small distances. Finally, we embed our empirical results in a simple economic model that demonstrates the economic and policy implications of the expenditures that we measure.

⁵Examples of many academic studies that speculate about the importance of moral hazard include Davis (1995), Loomis (2004), Stetler, Venn, and Calkin (2010), Lueck and Yoder (2016), and Wibbenmeyer (2017). Policy examples include U.S. Department of Interior and Department of Agriculture. 1995. Federal Wildland Fire Management Policy & Program Review; California Legislative Analyst’s Office. 2005. A Primer: California’s Wildland Fire Protection System; and USDA Office of Inspector General. 2006. Audit Report: Forest Service Large Fire Suppression Costs.

The paper is organized as follows. Section 2 provides an overview of wildland firefighting. Section 3 establishes the economic context for our empirical analysis through a simple conceptual framework. Section 4 discusses the data. Section 5 measures the cost of saving homes during wildfires, and then Section 6 calculates implicit subsidies to homeowners. Section 7 considers efficiency costs along with policy alternatives to internalize fire protection costs. Section 8 concludes.

2 Wildland Firefighting in the United States

Wildland firefighting in the United States is provided by a patchwork of federal, state, and local government agencies. Broadly speaking, financial and operational responsibility for a wildfire is determined by its ignition location and the area affected (Hoover and Lindsay 2017). For fires that affect multiple jurisdictions, these responsibilities are governed by local, state, and federal laws, as well as cooperative agreements in place between the affected jurisdictions.⁶ For fires on national forest land, for example, primary responsibility rests with the USFS. A handful of federal government agencies manage large amounts of public land and thus oversee significant firefighting activity in the West. In addition to USFS, these include the Bureau of Land Management, the National Park Service, the Bureau of Indian Affairs, and the Fish and Wildlife Service. Individual states also maintain large investments in wildland firefighting capacity and have primary responsibility for incidents on state-owned lands and private unincorporated areas. The largest state fire service is the California Department of Forestry and Fire Protection (Cal Fire), which provides fire protection for large areas of mostly private land in California. Incidents that start within the boundaries of towns and cities are initially the responsibility of local fire departments. Regardless of the managing agency, large incidents feature aid and cooperation across many different jurisdictions.

Many large wildfires that threaten homes begin on lands where federal or sometimes state agencies bear the primary financial responsibility for firefighting. The federal government also bears a portion of costs incurred on incidents “owned” by state and

⁶An example of such agreements is the California Master Cooperative Wildland Fire Management and Stafford Act Response Agreement, which involves the USFS, several Department of Interior agencies, and California.

local governments through grants from the Federal Emergency Management Agency (FEMA). For qualifying large fire incidents, the FEMA Fire Management Assistance Grant (FMAG) program reimburses states and cities 75% of their firefighting costs. Through this combination of direct expenditures and indirect support, the federal government absorbs a large share of wildland firefighting expenses.

Wildland firefighting efforts have multiple objectives, among them safeguarding human lives, protecting natural resources and endangered species, and preventing damage to private property. Existing case studies and interviews indicate that protection of structures is disproportionately important in determining incident costs. It requires significantly more manpower and equipment (e.g., air support, bulldozers) to stop a fire in place before it reaches homes, as opposed to letting the fire burn out naturally at a road or ridge or other natural fire barrier. Qualitative interviews with Forest Service managers imply that between 50 and 95 percent of federal firefighting costs are due to efforts to prevent damage to homes (USDA, 2006). Case studies of small samples of fires have found statistical results in line with these estimates (Gebert, Calkin, and Yoder 2007; Liang et al. 2008; Gude, Jones, Rasker, and Greenwood 2013). Wibbenmeyer (2017) shows that fire perimeters coincide closely with areas of changing population and housing density, implying that fire managers frequently stop fires just before they reach more populated areas. The same study also finds that firefighting expenditures in many cases exceed the value of structures predicted to be threatened by a simulation model. This either indicates that firefighting dispatch is inefficient, or that managers consider additional values like the contents of homes, natural resources, and catastrophic losses that could result if the fire exceeds the forecasted burn area.

The overall increase in wildland firefighting costs over the past several decades has been attributed to three factors: increased human habitation in fire-prone areas, the lengthening of the fire season as a result of climate change, and the buildup of increasingly dangerous fuel loads. Numerous descriptive studies in the forestry and urban planning literature document widespread, ongoing construction of new housing in high fire-risk areas (Radeloff et al. 2005; Gude, Rasker, and Noort 2008; Hammer, Stewart, and Radeloff 2009; Martinuzzi et al. 2015; Radeloff et al. 2018). At the same time, changes in climate have affected the amount of fuel available for fires and the ease with which it burns. Climate change may be responsible for an additional 4.2

million acres burned between 1984 and 2015, accounting for nearly half of the increase in acres burned (Abatzoglou and Williams 2016).

The increase in available fuels is in part due to forest management decisions. Land use change and a policy of fire suppression have altered the type and extent of fuels in the western United States (Stephens, Collins, Biber, and Ful 2016). Although the precise impacts of these changes on the costs of fires are the subject of continuing research, the majority view is that aggressive fire suppression efforts have led to an increased risk of large, damaging fires. Many ecologists argue that greater use of prescribed and managed fires, as well as mechanical thinning of vegetation, would reduce the risk of dangerous wildfires and lower overall required expenditures on fire management. Efforts to implement these recommendations have proven politically unpopular and have met with limited success. Prescribed fire is particularly difficult to use in areas with private home development because of concerns about threat to homes.

The complexity of the wildfire problem and the institutions designed to address it give rise to a number of potential inefficiencies. These could include spillovers in protection benefits between adjacent landowners, dynamic tradeoffs of suppression today with fuel loads tomorrow, and inefficient dispatch of firefighting resources for political economy reasons.⁷ The particular incentive problem that we focus on in this paper is one that economists and policymakers have long suspected of having important distortionary effects (see citations in footnote 5). Qualitative case studies in geography have documented how municipal governments realize property tax revenues from development in high fire-risk areas while federal and state sources subsidize fire protection (Simon 2017). In 2006, the USDA Inspector General expressed similar concerns, writing that, “Assigning the financial responsibility for WUI wildfire protection to State and local government is critical because Federal agencies do not have the power to regulate WUI development. Zoning and planning authority rests with State and local government”, and that, “Homeowner reliance on the Federal government to provide wildfire suppression services places an enormous financial burden on FS, as the lead Federal agency providing such services. It also removes incentives for landowners moving into the WUI to take responsibility for their own protection

⁷Lueck and Yoder (2016) provides a broad overview of economic issues in wildland fire management.

and ensure their homes are constructed and landscaped in ways that reduce wildfire risks” (USDA, 2006).

The nuances of U.S. fire protection policy described in this section suggest an alternative approach to our research question, which is to attempt to measure changes in construction and home prices in response to changes in firefighting policy over time or at jurisdictional boundaries. An advantage of this approach is that it could yield direct reduced-form estimates of the effects of past policy changes on home development. At the same time, it has important limitations. We are not aware of any part of the U.S. where no effort is made to protect homes during wildfires. This means that such approaches would rely on small, difficult-to-interpret differences in perceived protection.⁸ In comparison, our approach is more interpretable and generalizable. By using expenditure data to estimate implicit subsidy amounts, we recover an economic parameter that is directly useful for policy questions. Combined with estimates of supply and demand for new residential construction, our results can be used to calculate expected quantity changes and deadweight loss. Our estimates also directly reveal the fiscal and distributional consequences of federal firefighting policy. Furthermore, our estimates are calculated for the entire Western U.S., as opposed to the place and time of a particular policy change or boundary.⁹

Another advantage is that our approach does not require the assumption that home buyers under the current regime are fully informed and rational about wildfire risk. This is important because home prices in wildland areas have been shown to decrease after nearby fires or information campaigns about fire risk, suggesting this risk is imperfectly salient (Loomis 2004; Donovan, Champ, and Butry 2007; McCoy and Walsh 2014). Interpreting observed changes in prices and development in response to firefighting policy thus requires an assumption about salience. This approach requires not only that homeowners value possible losses from future fires (perhaps through shopping for homeowners insurance) but also that they perceive

⁸Even in the few remote areas with no local fire service (“no-man’s land”), neighboring jurisdictions, states, and federal agencies often send resources when wildfires threaten homes. Furthermore, responsibility for firefighting depends on the ignition location (which is frequently federal public lands, prompting a federal response), not simply the location of homes eventually threatened.

⁹We see research that leverages spatial and time-series variation in protection policy in special instances where it exists as a potentially useful complement to our approach. The one relevant paper that we are aware of is a 2012 working paper showing that construction increased adjacent to federal lands after the 1988 Yellowstone fires prompted more aggressive firefighting policies (Kousky and Olmstead 2012).

relatively minor *differences* in property risk when firefighting policy changes across time or boundaries. Moreover, many policy interventions (e.g., pricing firefighting) could themselves change risk salience, limiting the usefulness of reduced form estimates in guiding policy or calculating corrective taxes. In comparison, we do not require any assumptions about salience to calculate implicit subsidies, and need only weak assumptions about salience to evaluate a range of potential policy options. For instance, to contemplate a policy where developers pay an up-front fee equalling expected future protection costs, we only need to assume that they correctly perceive this one-time, up-front known payment.

3 Conceptual Framework

This section presents a stylized model that guides our empirical analysis. The primary goal is to illustrate how potential distortions in the housing market depend on 1) the relative magnitudes of government defensive expenditures and private property damages; 2) the severity of disaster risk; and 3) the elasticities of supply and demand for residential construction. The first of these is most interesting and is where we focus the discussion. We focus on location choice and development density, but the model could be extended to include private protective investments.

3.1 Setup

N households indexed by i choose to locate in one of two locations: “safe” (S) or “risky” (R). Each household weighs its (household-specific) benefit from each location against the location-specific cost of living, which includes the expected cost of a stochastic natural hazard (e.g., wildfire) and the price of a locally-produced non-tradable good (referred to as “housing” throughout this section). We impose several stylized assumptions to simplify exposition and focus on the elements of the model related to our research question. Households move frictionlessly between locations to maximize their utility. Regardless of location, households supply a single unit of labor inelastically at a fixed wage and consume a single unit of housing at the local price. Housing is supplied in a competitive market. The risky and safe locations also vary in other (exogenous) amenities valued by households (e.g., outdoor recreation).

Each household’s willingness to pay (WTP) to have the risky place amenity bundle (not including disaster costs) instead of the reservation location is θ_i . We adopt a static framework in which development in the risky place happens all at once.

The probabilities of a natural disaster in the risky and safe locations are ϕ and 0, respectively. Defensive expenditures f made during a disaster can reduce expected property damages to each individual resident, which we denote $H(f)$. Defensive expenditures (e.g., firefighting) are supplied by the central government. We make the following assumptions about f and $H(f)$, which are consistent with our data and stylized facts about natural disaster response.

1. $H'(f) < 0$ and $H''(f) > 0$. That is, defensive expenditures reduce expected damages, and do so with diminishing returns.
2. Benefits of defensive expenditures are non-rival within a location.
3. Within a location, homes are identical so that $H(f)$ is constant across homes.

In the event of a disaster, the government chooses the optimal level of defensive expenditure given population in the risky place, n_r . This value $f^*(n_r)$ minimizes the sum of defensive expenditures and total expected property damage, $f + n_r H(f)$.¹⁰ $f^*(n_r)$ is increasing in n_r since, as population increases, more homes benefit from protection. In subsequent sections we drop the * for notational convenience.

3.2 The market for housing in the risky place

First consider how the financing of defensive expenditures affects population in the risky place. One intuitive benchmark is a policy that requires households to reimburse the central government for their per-capita share of defensive expenditures after a disaster. In the absence of a disaster, realized household benefit from living in the risky place is θ_i . If a disaster occurs, realized household benefit from living in the risky place is $\theta_i - \frac{f(n_r)}{n_r} - H(f(n_r))$. The last two terms represent per-capita disaster costs. The sum of these two terms is decreasing in local population.¹¹ Assuming risk-averse

¹⁰This rule mimics the principle of “least cost plus net value change” in the natural resources literature on fire suppression.

¹¹This result comes from the envelope theorem, noting that $f(n_r)$ is chosen optimally to minimize disaster costs.

households and perfectly competitive insurance markets, households in the risky place will purchase full insurance covering property losses and defensive expenditures. Premiums will equal expected losses, $\phi[\frac{f(n_r)}{n_r} + H(f(n_r))]$. Thus, the expected benefit of choosing to live in the risky location is $\theta_i - \phi[\frac{f(n_r)}{n_r} + H(f(n_r))]$.

Compare this to an alternative policy where the central government does not require reimbursement for defensive expenditures. The expected disaster costs borne by households (and thus the households' insurance premiums) include only expected property damages, $\phi H(f(n_r))$. Accordingly, private net benefits from locating in the risky place are higher. The externalized costs of defensive expenditures are assumed to be borne equally by all households regardless of location through a constant budget-balancing tax equal to $\frac{1}{N}f(n_r)$.

Figure 1 depicts the market for housing in the risky location under each policy. The black downward sloping line shows demand for non-disaster amenities, θ_i . This line slopes downward due to heterogeneity in households' WTP to live in the risky location. The solid gray line shows demand net of expected per-capita disaster costs $\phi[\frac{f(n_r)}{n_r} + H(f(n_r))]$. As discussed above, the vertical distance between these two lines is larger at lower population levels because per-capita disaster costs decrease with population. The dashed gray line shows demand net only of expected property damages, $\phi H(f(n_r))$, corresponding to the case where households are not required to pay for defensive expenditures. The black line labeled s shows the marginal cost of housing in the risky place. This example is drawn to reflect elastic housing supply up to a capacity constraint (perhaps due to land availability or land use regulations). The supply elasticity of housing has important implications that we revisit in Section 7.

When households pay for defensive expenditures, the equilibrium population n_r^0 equates demand and supply in the risky place. If the government pays for defensive expenditures, housing demand is higher and population is n_r' .

3.3 Optimal level of development

Having shown how the financing of defensive expenditures affects individual decisions, we now consider the optimal amount of development in the risky place and the

efficiency costs of deviations. The total net benefit of development in the risky place is,

$$\int_0^{n_r} \theta_i du - \int_0^{n_r} s(n) du - \phi f(n_r) - \phi H(f(n_r)) n_r \quad (1)$$

The first term is total WTP of risky-place residents; the second is the total cost of housing; the third is expected defensive expenditures; and the fourth is total expected property damage. A necessary condition for a non-zero optimal population is given by the first order condition,

$$\theta_{n_r} = s(n_r) + \phi f'(n_r) + \phi \left[H(f(n_r)) + \frac{\partial H}{\partial f(n_r)} f'(n_r) n_r \right] \quad (2)$$

This intuitive expression equates the WTP of the marginal risky place resident with the sum of the marginal housing and disaster-related costs. The second term on the right hand side shows that increasing development increases optimal defensive expenditures in the event of a disaster (because the value at risk has increased). The final expression in brackets is the change in property damage. This change includes expected damages to one more home, plus decreased damages for all inframarginal homes as a result of the increase in defensive expenditures in the event of a disaster.

The first way in which public provision of defensive expenditures can distort development is on the intensive margin. When individuals do not internalize $\phi f'(n_r)$, private costs are below social costs and the amount of development in the risky place exceeds the socially optimal level. The magnitude of this distortion depends on the *marginal* increase in defensive expenditures with population.

The second potential distortion concerns whether development occurs at all. The necessary condition in Equation 2 yields the optimal population in the risky place conditional on development, but it does not guarantee that the total benefits exceed the total costs. If the marginal cost of supplying fire protection is substantially below the average cost, it may be that development at the population implied by Equation 2 would yield negative net benefits. In such cases, the socially optimal amount of development in the risky place is zero. One example is the extreme case where defensive expenditures include just a large fixed cost. Marginal protection cost is zero, and the net benefits of development depend on the magnitude of the fixed

cost.

When rational households internalize all disaster-related costs, development occurs only if total WTP among risky place residents exceeds the sum of housing costs, expected property damages, and expected defensive expenditures.¹² When the government pays for defensive expenditures, development proceeds whenever total WTP exceeds housing costs and expected property damages. When development passes this latter private cost test but fails the former social cost test, development proceeds inefficiently. The magnitude of this distortion depends on *average* defensive expenditures at the observed level of development.

3.4 Implications for the empirical analysis

The share of total expected disaster costs that risky-place residents internalize depends on the relative magnitudes of defensive expenditures and property damages. When defensive expenditures make up a large share of total disaster costs, as in our empirical application, private location decisions ignore a large component of disaster costs. This study derives spatially explicit measures of expected firefighting expenditures that directly quantify the implicit subsidy in this model. The per-capita expected protection costs in our analysis map directly to average defensive expenditures, $\phi \frac{f(n_r)}{n_r}$. From a welfare perspective, these per-capita expected cost estimates can be interpreted as the minimum amount by which average WTP to live in a WUI area must exceed housing costs and insurance premiums in order for development to be efficient. We also explore marginal expected firefighting costs, which allows us to compare the relative importance of the two distortions in the model.

The model also shows how the size of the subsidy depends on the equilibrium population in the risky place. Per-capita disaster costs decrease with population, so that the marginal increase in total disaster-related costs from locating in the risky place is higher at low populations. Because we observe responses to a large number of

¹²Defensive expenditures need not be divided equally among risky place households. In fact, welfare is highest when costs are allocated in proportion to WTP to live in the risky place. Such differentiation makes it possible to satisfy Equation 2, balancing the marginal household's WTP against marginal (as opposed to average) defensive expenditures. Absent contracting frictions, households could reproduce this efficient allocation of protection costs through private contracts regardless of the statutory assignment of costs.

wildland fire incidents in areas with varied population density, we are able to validate this relationship between local population density and per-capita disaster costs empirically.

4 Data

We construct a dataset that combines administrative data on firefighting expenditures from federal and state agencies with assessor data for nearly all single-family homes in the western United States, defined as the states of Arizona, California, Colorado, Idaho, Montana, New Mexico, Nevada, Oregon, Utah, Washington, and Wyoming. Our dataset also includes topographical information, wildfire risk assessments, and weather conditions from the time and location of the fire ignition. This section provides an overview of the dataset, while a comprehensive account of dataset construction can be found in Section B in the appendix.

We collect fire suppression and fire preparedness data from five federal agencies and one state agency. Fire suppression refers to expenditures made in the act of fighting a fire, while preparedness expenditures are costs incurred in order to reduce or mitigate damage from future fires. The federal agencies are the U.S. Forest Service (USFS), the National Park Service (NPS), the Bureau of Land Management (BLM), the Bureau of Indian Affairs (BIA), and the Federal Emergency Management Agency (FEMA). The state agency is California’s Department of Forestry and Fire Protection (Cal Fire), which is unique among state agencies in the magnitude of its firefighting spending. Incident-level expenditures for each agency come from a combination of Freedom of Information Act requests (Public Records Act requests for California) and publicly available sources. Because fire costs are only reported consistently for large fires and because large fires comprise the bulk of fire suppression expenditures, we focus our analysis on fires that are 300 acres or larger. The regression analysis in Section 5 focuses on the USFS fire suppression data, which cover 1995 to 2017. The calculation of implicit subsidies in Section 6 uses expenditures from all agencies in the dataset.

For each fire, we use the location of the ignition point to obtain the topographical conditions at the fire (elevation, slope, aspect, and fuel model) as well as the

weather conditions (temperature, precipitation, wind speed, and humidity) at the time of ignition. We also estimate the distance between the ignition point of each fire and valuable nearby resources, including homes and state and federal highways. We compute the number and value of homes within 5, 10, ..., 40 kilometers of the ignition point of each fire, as well as the distance from the ignition point to the nearest home.

The parcels dataset we use is a proprietary compilation of county assessor data. It includes location, transaction values, year of construction, and other relevant property characteristics for 18.5 million parcels, or nearly all of the single family homes in the western United States. We limit this sample to 8.7 million homes in areas with significant wildland vegetation, as defined by Radeloff et al. (2018). For each home, our data includes a measure of its actual location, which is an improvement over previous papers about wildfire risk which rely on publicly available housing counts at the census block level. In the rural and ex-urban areas that make up the WUI, census blocks are often very large. Appendix Section [B.2.1](#) includes more detail on these geographic data.

Our final dataset includes 4,581 fires that account for 10.5 billion dollars of suppression costs and links those fires to 8.7 million western-US homes in the WUI. Detailed descriptive statistics are included in the online appendix.

5 The Cost of Saving Homes During Wildfires

5.1 Empirical strategy

The first step in our empirical analysis is to establish what share of firefighting expenditures are incurred to protect private homes. Even in the absence of any nearby private home development, some amount of resources would likely be devoted to managing and suppressing a fire. Our objective is to understand how fire managers change the resources devoted to firefighting when homes are located in harm's way. We recover this difference empirically by estimating the casual impact of home presence and density on firefighting costs.

A number of observable and unobservable factors should be expected to affect the cost

of fighting a fire, including ecological characteristics, local weather trends, and the typical response behavior of local fire managers. Our empirical strategy addresses this identification challenge by taking advantage of variation in ignition locations within U.S. national forests. Each of the national forests in our dataset experienced multiple large fires during our study period. We compare suppression costs for fires within the same national forest that happened to start at different distances from homes. Some fires start far away from private homes, for example deep inside the national forest, while other fires start nearer to homes because the ignition point is closer to the national forest boundary or to a privately-owned “inholding”, or because new homes have been built near the boundary. Figure 2 illustrates this variation for four example national forests. In each panel, the area of the national forest is shown in green. Fires are shown as x’s and are colored by the distance from the ignition point to the nearest home. Fires that started more than 10 kilometers away from any home are shown in dark blue. Black markers indicate homes.

We take advantage of this variation in ignition locations using a fixed-effects estimation strategy. We model the effect of homes on fire suppression costs as,

$$\ln(\text{Cost}_{ift}) = g(\text{Homes}_{it}) + X_{ift}\rho + \delta_f + \omega_{st} + \eta_{ift} \quad (3)$$

Cost_{ift} is the suppression cost for fire i in national forest f in month-of-sample t . We are primarily interested in how this cost depends on the potential threat posed by the fire to private homes, Homes_{it} . We begin in Section 5.2 by parameterizing Homes_{it} as the distance from the ignition point of the fire to the nearest home. In Section 5.3, we consider the total number of homes near the ignition point. In either case, our preferred model approximates $g(\cdot)$ with a binned step function to allow a flexible response of costs to threatened homes (although our estimates are robust to a variety of functional forms).

This panel data approach addresses a number of omitted variables concerns. The national forest fixed effects δ_f control for unobservable determinants of firefighting cost that are constant at the national forest level. We also include time fixed effects ω_{st} that control flexibly for unobserved changes in firefighting costs over time. Our preferred specification includes state by month-of-year fixed effects and state by year fixed effects. Intuitively, this identification strategy amounts to comparing fires in the same national forest during the same time of year and the same year of the

sample.

We include additional control variables X_{ift} to address the fact that locations of private homes are not randomly assigned. Even within a given national forest, areas near homes may differ systematically from areas far from homes in ways that affect firefighting cost. The control variables X_{ift} include the slope of the terrain at the ignition site, the geographic aspect, the vegetation type (fuel model), and weather conditions at the point of ignition on the ignition day.¹³ We also estimate a specification where we limit the sample to fires caused by lightning, which ensures that the location and timing of fires is not driven by the presence of people. The identifying assumption in this analysis is that unobserved determinants of fire cost, η_{ift} , are independent of Homes_{it} , conditional on national forest fixed effects and our other controls.

5.2 Proximity to homes

We begin by considering a version of Equation 3 where the threat to private homes, Homes_{it} , is proxied by the distance from the ignition point to the nearest home that existed at the time of the fire. Figure 3 shows estimates from three flexible regression specifications. Each regression includes national forest fixed effects, state by month-of-year fixed effects, and state by year fixed effects. The solid black line shows the estimated marginal effect of distance from a regression of log costs on a cubic polynomial of distance to homes. The shaded gray area is the 95% confidence interval. The dashed black line shows a linear spline in distance to homes, with knots placed every 10 kilometers. Finally, the black dots report coefficients from a binned step function specification. These coefficients correspond to indicator variables for 5-kilometer bins of distance to homes. The omitted category is fires that start less than five kilometers away from homes. Regardless of the functional form that we choose, there is a clear gradient in firefighting costs with distance. The relationship is steep, monotonic and close to linear. Relative to a fire that starts 45 kilometers from any home, the log cost of a fire less than five kilometers from homes is higher by about 2.25. Taken literally, these estimates imply that a fire that starts less than 5 km from homes would cost 75% less if there were no homes within 25 km, and 93%

¹³Only the weather conditions vary over time; elevation, slope, aspect, and fuel model are constant.

less if there were no homes within 40 km.¹⁴

Table 1 estimates alternative models using a binned specification. Column (1) follows the figure. Column (2) adds additional controls for pre-determined fire characteristics. As we show in the appendix, the signs and magnitudes of the included covariates match expectations. Firefighting costs are higher where the terrain slopes more steeply, reflecting difficulty of access. Costs also increase with wind speed on the ignition day, consistent with the importance of wind in fire spread. Vapor pressure differential (VPD) is a measure of atmospheric dryness, where higher values imply drier air; as expected, high VPD increases firefighting costs.¹⁵ Costs are also higher for fires on south- or southwest-facing slopes, which receive additional sun exposure and thus tend to have more readily combustible vegetation. While we find that many of these covariates have meaningful effects on firefighting costs, including them in the regression has little effect on our estimated distance gradient.

The remaining columns show three robustness checks. Column (3) replaces the time fixed effects with more granular month-of-sample by state fixed effects, which allow for arbitrary shocks to firefighting costs in each month of the dataset in each state. These finer-grained time fixed effects absorb higher-frequency local cost fluctuations that might be caused by weather patterns or other factors. This alternative specification produces a similar distance gradient. Column (4) restricts the sample to fires started by lightning. Some types of human-caused fires are more likely to occur near populated areas, introducing a potential identification concern if fires due to arson or campfires or other causes vary systematically in their difficulty to extinguish. The locations of lightning strikes are plausibly random and thus purged of this potential bias. If anything, the estimated distance gradient is steeper when this restriction is applied, though the estimates are not different in a statistical sense. Column (5) restricts to fires occurring in timber areas, since developed areas are also less likely to be heavily wooded than more remote areas. As before, the estimated distance gradient steepens slightly under this restriction. This is consistent with our expectation that any omitted variables that might persist after our empirical design and control

¹⁴These percentage changes are calculated using the binned specification. Halvorsen and Palmquist (1980) and Kennedy (1981) show that the percentage effect of an indicator variable in a semi-log regression can be approximated as $e^{\beta-0.5V(\beta)} - 1$, where β is the regression coefficient.

¹⁵VPD is the deficit between the observed vapor pressure and the vapor pressure at the current temperature if the air were fully saturated with water. Meteorologists have shown VPD to be an important measure of dryness and predictor of fire severity (Anderson 1936; Seager et al. 2015).

variables would bias our estimated effects downwards.

5.3 Total Number of Homes

The results in the previous section imply that the *presence* of nearby private homes strongly affects firefighting costs. In this section we consider how this effect varies with the *density* of development. To do this, we fix a radius around each fire and estimate a version of Equation 3 that parameterizes $Homes_{it}$ as the total number of homes within that radius. We use a 30 kilometer radius in our baseline specification. The online appendix shows results for alternative radii.

Figure 4 shows results from a binned step function specification. The reference bin is fires with zero homes within 30 km, and the other bins evenly divide the remaining fires into deciles. The presence of just one to 31 homes almost doubles expenditures on a fire. Costs are further increasing over the first few deciles, up to about 100–300 homes. Beyond that costs change very little, even for fires threatening thousands or tens of thousands of homes. This strongly nonlinear relationship between cost and density is consistent with the assumption in the theoretical model that the benefits of wildland firefighting are locally non-rival, and the subsequent result that marginal protection costs are decreasing in population density.

One way to contextualize these results is to convert the numbers of homes in Figure 4 into conventional measures of residential density such as the number of homes per unit area. The area of a circle with radius 30 km is 2,826 km². Simply dividing by this area yields “gross” density. Land use planners typically work with *net* density, which measures land consumption per housing unit after subtracting out open space, parks, pasture, roads, and other land uses. For comparison to this standard measure, we calculate the average of the reported lot sizes for all homes within 30 km of the fire. The median net density across fires in the fourth non-zero bin, where costs level off, is 0.17 homes per acre.¹⁶ Mann et al. (2014) define 5 tiers of residential density:

¹⁶This calculation is meant to provide broad context as opposed to a highly accurate measure of net density. We calculate the mean lot size within 30 km of each fire, and then calculate the median average lot size in each decile bin in the figure. These range from 0.11 homes per acre in the left-most non-zero bin to 1.01 homes per acre in the right-most bin (a “high” level of density following Mann et al. (2014)). The average lot size within 30 km of each fire is sensitive to some very large reported parcels. Lot size is also missing for some homes, which we necessarily omit from this calculation.

sparse, low, medium, high, and very high. A value of 0.15 homes per acre is between the cutoffs for “low” and “medium”.

5.4 Additional Results and Robustness Checks

In addition to the checks described above, we include a more detailed set of additional results and robustness checks in the online appendix, which we describe here in brief. First, we show that the estimated density effects in Figure 4 are robust to the same checks shown in Table 1, such as limiting to lightning-caused fires or including finer-grained time fixed effects. We also show that using the total transaction value of homes instead of the number of nearby homes yields similar results. Furthermore, we show that the effect of development density on firefighting costs is robust to using different radii around the ignition point.

Our measure of valuable structures threatened by a fire does not include public infrastructure such as school buildings and municipal parks that would also be considered by incident commanders when choosing response levels. This means that our approach assigns the cost of protecting those public goods to nearby homeowners. For local public goods such as schools and parks, this makes intuitive sense, since construction of such local public goods follows as a direct result of housing construction (Brueckner 1997). It should also be noted that built structures in the WUI areas where we are focused are disproportionately residential, with residents who travel by car to more-developed commercial areas for shopping, work, and school.

Since firefighting costs are only consistently reported for incidents larger than 300 acres, a potential concern is bias due to sample selection. Our analysis could be affected if the subset of ignitions that reach this size differs with distance from homes in a way that is correlated with suppression costs. For example, one might worry that concentrated initial attack efforts near homes make ignitions near homes unlikely to grow large unless conditions are difficult (e.g., high winds). This selection would result in an upward bias in a naive regression of firefighting costs on distance to homes.¹⁷ Importantly, we are able to control directly for the most significant potential confounders. Wind, weather conditions, and topography are primary determinants

¹⁷Selection could in principle also occur in the other direction: Incident managers may respond more slowly to fires near homes when they pose little threat.

of suppression difficulty and cost (Gebert, Calkin, and Yoder 2007). Table 1 and Appendix Table I show that controlling flexibly for these variables improves the model fit while introducing only small changes in the coefficients of interest. This implies that sample selection or other omitted variables problems related to suppression difficulty are unlikely to affect our estimates.

We also compare our regression-based method to a different empirical approach. Auditors from the USDA Office of the Inspector General have studied federal firefighting expenditures using interview methods. USFS managers reported that in their experience, 50 to 95% of USFS firefighting expenditures are devoted to protecting private structures (USDA, 2006). Table IV in the online appendix reports implicit subsidy estimates that ignore the regression results in this section and instead use these interviews to identify the share of firefighting expenditures devoted to protecting homes. Specifically, we assume that protecting homes accounts for 72.5% of each fire’s costs (the midpoint of the reported range). The resulting distribution of homeowner-level implicit subsidies is similar to the main estimates that we calculate in Section 6. This similarity across methods is reassuring.

Finally, because our baseline estimates are not suitable to consider the impact of homes on the *frequency* of fires in an area, we conduct a separate analysis to investigate how this might impact our findings. As some wildland fires are ignited by humans, increased human population may create more ignitions. On the other hand, new homes could be accompanied by greater fire prevention efforts. We explore this relationship using panel variation in new home construction near each of the national forests in our federal sample. We find weak evidence of a small positive effect of new home construction on the number of large fires each year in places that start from a low level of development. Adding an additional 1,000 homes in a relatively undeveloped area is associated with about a 3.5% increase in the number of large fires each year, or about 0.06 additional large fires per year. The finding that human presence increases fire frequency is consistent with work by ecologists and geographers (Syphard et al. 2007; Massada, Syphard, Stewart, and Radeloff 2012; Faivre, Jin, Goulden, and Randerson 2014; Balch et al. 2017). This implies that our estimates may slightly undercount the additional firefighting cost created by new homes.

6 The Implicit Subsidy To Homeowners

This section calculates geographically-differentiated implicit subsidies due to wildland firefighting. For every individual home in the western United States, we calculate an actuarial (“ex-ante”) measure of the expected net present value of the cost incurred by the federal and state governments to protect the home during wildfires. Section 6.1 describes the methods that we use to estimate historical (“ex-post”) and expected (“ex-ante”) protection costs for each home. Section 6.2 summarizes the estimated costs and demonstrates the relationship between observable risk predictors and realized protection costs. Section 6.3 describes the geographic incidence of these implicit subsidies at regional and local scales, and Section 6.4 describes the incidence according to income.

6.1 Methods to calculate realized and expected protection costs

6.1.1 Calculating historical federal firefighting expenditures

We begin by estimating the historical federal direct expenditures on firefighting attributable to each home. In brief, we calculate expenditures for home protection on each historical fire, allocate those costs to homes near the ignition point, and then sum up the costs assigned to each home. This section describes each of those steps.

In Section 5 we limited the dataset to USFS fires in order to take advantage of variation in fire ignition location within national forests. When calculating historical firefighting costs in this section, we also include expenditures from BLM, NPS, and BIA in order to more fully capture federal agency expenditures.¹⁸ For each fire, we use the estimated model in Equation 3 to predict the firefighting cost for the incident if there had been no homes within 45 kilometers of the ignition point. For each fire i we calculate the difference Δ_i between the observed firefighting cost and this predicted counterfactual cost.¹⁹

¹⁸These additional data sources add a total of 93 million dollars (2017\$) per year, compared to 486 million dollars per year for USFS.

¹⁹See Appendix Section B.3 for the construction of Δ_i .

For each fire, we allocate Δ_i over homes within a fixed radius of the ignition point that were potentially threatened by the fire. Our definition of potentially threatened homes includes homes located within 45 km of the ignition point in areas with wildland vegetation. This vegetation classification follows Radeloff et al. (2005) and is described in detail in the appendix. Within the set of homes potentially threatened by each fire, we allocate Δ_i to homes using two sets of weights. First, we use inverse-distances weights, where threatened homes are assigned weights equal to the inverse of the distance $1/d$ between the home location and the fire ignition location, normalized to one within each fire, and home protection expenditures by fire are divided using the normalized weights. Our second and preferred set of weights uses the estimated proportional change in suppression cost from Equation 3 for the distance between the ignition point and the parcel location, normalized to sum to one for each fire. This exercise divides Δ_i across j potentially threatened homes, yielding costs δ_{ij} (calculated in 2017 dollars) for each home, where $\sum_{j=1}^J \delta_{ij} = \Delta_i$.

The next step of this calculation sums up the total costs associated with each home during the period of the historical data. For each home j , we sum that home's costs for each fire during the study period, $\rho_j = \sum_{i=1}^I \delta_{ij}$. We call this quantity the *realized protection cost* for home j because it represents the amount of firefighting expenditure associated with the home during the study period.

6.1.2 Calculating ex-ante expected federal firefighting expenditures

The estimate of interest in the conceptual model in Section 3 is not ex-post realized expenditures, but ex-ante expected expenditures. The observed history of firefighting costs is 20 years or less, which in many regions may not be a long enough period to fully describe the underlying fire risk. To estimate expected firefighting costs, we group regions with similar ecological and fire risk characteristics together into actuarial groups, much like private insurers do when calculating risk. We calculate expected cost for homes in each group as $\mathbb{E}_{h,d,s}[\rho_j]$

This calculation takes expectations over bins of wildfire hazard h , development density d , and geographic region g . Wildfire hazard is defined at the parcel level using the spatially-explicit wildfire hazard potential scores provided by Dillon (2015), which are a physical measure of wildfire risk taking into account ecological and geological

factors. Development density (population per square meter) comes from the Gridded Population of the World dataset, which reports population density within 1 km grid cells. We define geographic regions based on the boundaries of the seven Geographic Area Coordinating Centers (GACCs) that coordinate regional firefighting operations in the West. This binning process results in 210 actuarial groups. To reflect the ongoing nature of the firefighting guarantee, we calculate the net present value of the expected annual costs for each group of homes. We call this quantity the *expected parcel protection cost*. It represents the present value of the expected government expenditures for fire protection associated with each home.

We have also implemented an alternative approach to defining actuarial groups that uses machine learning techniques. Instead of choosing the actuarial groups ourselves, this approach uses a random forest estimator to define groupings based on wildfire hazard potential, population density, and geographic region that minimize the resulting mean squared prediction error for protection costs in each group. This approach yields similar results for expected protection costs; these results are available upon request.

6.1.3 Incorporating additional expenditure categories

Governments incur additional firefighting expenses beyond direct expenditures by federal agencies. To reflect this, we calculate several different measures of protection cost that incorporate successively broader categories of costs. Each of these measures represents a tradeoff between completeness and strength of required assumptions. A “suppression only” measure includes direct firefighting costs by USFS, BLM, NPS, and BIA. This measure requires the fewest assumptions beyond those in Section 5.1, but omits potentially important categories of expenditures. A “suppression plus” measure also accounts for the annual fixed costs of maintaining response capabilities (“preparedness” expenditures), and federal reimbursements to state and firefighting agencies through the Fire Management Assistance Grant (FMAG) program. Finally, our third measure is specific to California, the largest state in the West and a state where we have detailed state-level expenditure data.

The first element that we add to the “suppression plus” measure is federal preparedness spending. Allocating preparedness spending to individual fires involves two chal-

lenges, one conceptual and one computational. Conceptually, it is not clear how these annual costs should be attributed to individual incidents. We choose to divide preparedness costs equally across ignitions.²⁰ After this even division, we then calculate the share of preparedness costs due to homes using the same model as for suppression expenditures.²¹ The computational challenge arises because of the large number of ignitions in the dataset. Actually allocating costs to every ignition would require us to calculate distances to homes and other detailed spatial analyses for 100,000+ ignitions. As a feasible alternative, we impose the assumption that the geographic distribution of ignitions is approximately similar to the geographic distribution of fires exceeding 300+ acres. Under this assumption, we can achieve the same spatial allocation of preparedness costs by allocating preparedness spending across large fires only. This procedure yields an amount of preparedness spending for each fire that can be attributed to homes. Finally, we allocate these per-fire costs across nearby homes using the same distance weights used for suppression spending.

The “suppression plus” measure also includes FEMA reimbursements to states and cities as a proxy for state and local wildland firefighting costs. We take all wildfire-related incidents from FEMA and aggregate them to the state-year given for each. We then assign state-year FEMA reimbursements to parcels using the same method given for the preparedness spending.²² As with direct firefighting expenditures, we first calculate historical realized “suppression plus” expenditures, and then take expectations over similar-risk homes to calculate ex-anted expected costs.

6.1.4 A separate cost measure for California

Our final measure focuses on California, the largest and most populous state in the West. In this scenario, we exclude FEMA reimbursements and instead include Cal Fire incident costs as a direct measure of state government expenditures. The incident-level Cal Fire data include geographic coordinates as well as costs, so we are

²⁰For USFS, we divide each region-year of preparedness spending across fires in that region-year. The DOI agencies only report preparedness spending at the annual level, so we divide annual costs by annual number of fires.

²¹This assumes that homes increase preparedness costs by the same factor that they increase firefighting costs. While this is a strong assumption, we feel it is preferable to the other obvious alternative, which would be to assume that all preparedness costs are incurred to protect homes.

²²This reflects an additional assumption that the spatial distribution of fires for which FEMA makes reimbursements is similar to the overall distribution of fires in the data.

able to directly allocate these suppression costs in the same way that we allocated USFS and DOI suppression costs in the “suppression only” scenario. This final measure is the most complete estimate of the implicit subsidy due to wildland firefighting, but it is measured only for California homes.²³

6.2 Results: Implicit Subsidy Magnitudes

Figure 5 plots conditional means for historical protection costs. The figure shows average fire protection costs for homes in each of 400 bins, using the “Suppression Plus” cost metric. The sample of homes in this figure includes all 8 million homes in the western U.S. located near areas of wildland vegetation (about 47% of all western U.S. homes). The color scale indicates the average protection costs for homes in each cell, according to a log scale. The range of historical protection costs is large. The average net present value of historical protection costs is a few hundred dollars per home for the lowest-cost cells and over \$100,000 per home in the highest-cost cells.

Moreover, there is a clear graphical relationship between realized protection costs and observable predictors of risk. The vertical axis is defined by 20 bins of landscape fire risk based on wildfire hazard potential, or WHP (Dillon 2015). WHP is a measure of physical fire risk based on vegetation, terrain type, and other landscape characteristics. Average protection costs are clearly increasing with WHP scores. This relationship is intuitive, but the magnitude of the cost difference between low- and high-WHP homes is striking. Along the horizontal axis, protection costs are strongly decreasing with development density. This somewhat more surprising result is likely due to the nonlinear relationship between firefighting costs and housing density that we documented in Section 5.3. Instead of being driven purely by idiosyncratic risk, the costs of protecting homes from fires appear to vary in a highly predictable way. Throughout the West, homes in low-density, high-fire-risk areas are extremely expensive to protect.

²³This estimate still does not capture some costs. Municipal fire spending is excluded. This may be appropriate given that municipal costs are more directly internalized through property taxes and other local taxes. Another excluded cost is large expenditures by electric utility companies to trim trees near power lines in order to mitigate the risk of wildfire while delivering power to homes built in high-risk areas.

Table 2 describes the distribution of “expected protection costs” for the 8.1 million homes in our sampling area in the 11 western states. These expected protection costs are estimated by aggregating homes into the actuarial groups described in Section 6.1.2. The first three columns describe the upper half of the distribution of the expected present value of firefighting costs due to each home, using three different cost measures. Using the “suppression only” measure, most western homes have expected protection costs of several hundred dollars or less, while the highest-risk homes have costs that are much larger. Five percent of homes have expected costs exceeding \$4,000. One percent of homes have expected protection costs exceeding \$13,800. Using the “suppression plus” measure results in higher costs. The 95th- and 99th percentiles of this distribution are about twice as high as for the “suppression only” measure. When we restrict the sample to California homes, where we have higher-quality data on state-level expenditures, we find that the 95th and 99th percentile costs are roughly similar to the previous column.

The right-hand column of Table 2 reports the “suppression plus” measure as a share of the transaction value of the property.²⁴ These implicit subsidies are large compared to housing values. For the 5% of homes with the highest relative costs, the present value of expected future firefighting costs is more than 5.8% of property value. For the highest 1% of homes, it exceeds 20%.

The expected costs in Table 2 are calculated by averaging together the experiences of groups of homes in different locations with similar risk characteristics. This means that the expected cost metrics do not simply reflect an unlucky or exceptional fire history in one small location. Instead, they represent the aggregate cost history of all homes in a given actuarial category. The homes at or above the 95th percentile represent 75 actuarial groups, while homes above the 99th percentile represent 19 actuarial groups.

²⁴We exclude some missing or unusable transaction values from this relative cost calculation, as described in the online appendix. For this table, we assign each home the average relative cost among homes in its actuarial group.

6.3 Results: Geographic Incidence

Figure 6 shows the broad geographic distribution of expected protection costs. This map shows the average expected protection cost for homes in each 15 kilometer hexagonal cell. The color scale corresponds to increasing costs. The scale is top-coded, so that the darkest red corresponds to homes with expected protection costs of \$30,000 or more. Average expected protection costs are highest in Northern California, central Oregon and Washington, and Idaho and western Montana. These are all sparsely-populated areas with many areas of high fire risk.

The costs of protecting homes are a surprisingly large part of the bundle of federal benefits provided to households in these areas. To contextualize our findings, the annual implicit subsidies to homeowners in Montana and Idaho via firefighting are larger than federal transfers to those states under the Temporary Assistance to Needy Families (TANF) program.²⁵ Notably, Southern California, which also features high fire risk and frequent costly fires, has somewhat lower expected protection cost than these other regions. This likely reflects greater development density in fire-prone parts of Southern California, which reduces per-home firefighting costs.

Significant local variation in wildfire risk and development density in the West means that expected protection costs also vary substantially over small distances. Figures 7A and 7B illustrate this local variation for two areas in California. These maps show the net present value of per-home expected protection costs averaged within 5 kilometer hexagonal cells. Figure 7A shows Shasta county in Northern California. Expected protection costs are several hundred dollars per home or less in the more densely-developed areas of central Redding and Anderson. Outside of these urban areas, wildfire hazard increases and density decreases rapidly. As a result, expected protection costs are much higher. In some of the more remote Census blocks that border national forest lands or other public wildlands, costs are tens of thousands of dollars per home. These areas have a high underlying physical risk of fire, meaning that homes built here are likely to repeatedly require costly firefighting efforts to avoid destruction. In addition, these areas include fewer total homes, raising the per-home cost of firefighting. Figure 7B shows San Diego County in Southern California. Again,

²⁵Federal TANF expenditures in FY2016 were \$32 million for Montana and \$26 million for Idaho. U.S. Dept. of Health and Human Services, Office of Family Assistance, “TANF Financial Data - FY 2016”, published February 2018. See sheet C.1.

fire protection costs per home are low in the densely developed areas of San Diego, and increase in the high fire-risk, low-housing-density areas that border federal- and state-owned lands in the eastern part of the County.

6.4 Results: Incidence across Income Groups

Figure 8 explores the distributional effects of firefighting expenditures. A frequently-repeated claim about wildland firefighting in the United States is that it primarily benefits the rich (see, for example, “A Case for Letting Malibu Burn” (Davis 1995)). Our data tell a different story. Panel A shows that on average, homes in low-income areas of the West receive substantially more benefit from government firefighting efforts than homes in high-income areas. This likely reflects the fact that the areas with the highest per-home expected protection costs are low-density rural and semi-rural areas. Panel B considers an alternative measure of wealth, which is the transaction value of the home. For most American homeowners, the asset value of the home is a strong predictor of overall wealth. Again, the highest protection costs on average are associated with low-value homes.

7 Discussion

This section considers the economic implications of the large and widely-varying implicit subsidies that we identify. Section 7.1 considers the implications for economic efficiency, including location choice for new construction, lot size and development density; and private risk-reducing investments. Section 7.2 discusses potential policy interventions aimed at internalizing these costs.

7.1 Economic Efficiency

The welfare costs of this subsidy depend on the degree to which it distorts economic decisions. In this section we use our estimates to consider potential effects along several margins of interest. First, we consider the extensive margin choice by a municipality to allow new development or by individuals to build new homes in

undeveloped high-risk areas. Next, we consider questions related to lot size and development density. Finally, we consider private choices about risk-reducing activities such as maintaining vegetation and using fire-proof building materials.

7.1.1 New Development in High-Risk Areas

Under a business-as-usual scenario, the dominant pattern of land use change in California and the rest of the West through 2050 is predicted to be conversion of undeveloped or sparsely developed areas to low-density housing use, with much of this development located in high fire risk areas (Gude, Rasker, and Noort 2008; Mann et al. 2014). The degree to which this pattern of development is influenced by freely-provided fire protection depends on the magnitude of fire protection costs and the elasticity of new residential development with respect to those costs.

In the low-density ex-urban and rural areas where we measure large implicit subsidies, existing research suggests that housing supply is quite elastic. Development in these areas is generally not limited by land availability or regulation, unlike coastal cities in California (Glaeser and Gottlieb 2009). Saiz (2010) reports supply elasticities in the metropolitan statistical areas (MSA) around Denver, Colorado Springs, and Albuquerque of 1.53, 1.67, and 2.27, respectively. This includes more urban parts of the MSA and thus may understate supply elasticities in wildland-urban interface areas. As further evidence of elastic housing supply, we observe that home prices in our highest-subsidy areas are low, near the minimum profitable construction costs presented in Glaeser and Gyourko (2018). These seem to be areas where homes are built and sold at close to marginal cost. Moreover, the resulting low transaction values increase the relative magnitude of firefighting costs as a share of total home costs.

The local elasticity of demand depends on long-distance migration, within-city location choice, and household formation. Existing research offers a range of estimates for these various margins. For cross-city location decisions, Albouy (2009) uses a large price elasticity of -6.0, following Bartik (1991). Kennan and Walker (2011) finds a smaller value of about -0.5. For the within-city decision about whether to locate on the urban periphery or in the city center, Voith, Brueckner, and Holtz-Eakin (2000) use an elasticity of -0.5. Anas and Chu (1984) find a within-city location choice

elasticity of between -0.27 and -0.87. Polinsky and Ellwood (1979) and Muth (1971) both find that the price elasticity of demand for new, detached single family housing is about -1.0. Collectively, these estimates suggest that -1.0 might be a conservative estimate of the overall (across- and within-city) elasticity of new housing demand in high fire-risk regions.

Given these elasticities, the protection costs that we measure may imply substantial amounts of excess development. Distortions on the extensive margin – whether or not any development happens in a given area – depend on average protection costs. From a welfare perspective, our estimates of average protection costs can be interpreted as the minimum amount by which average WTP to live in a WUI area must exceed housing costs and insurance premiums in order for new development to be efficient. We find that average expected protection costs for homes in the highest category of fire risk and lowest category of density equal about 25% of transaction costs. Thus, new development in such areas is welfare-improving only when residents would derive large value from the location relative to other possible locations with lower fire risk. This condition may be somewhat difficult to reconcile with the large reported elasticities of development with respect to price.

Distortions on the intensive margin – the number of homes in a developed area – depend on marginal protection costs. Beyond low levels of development, firefighting costs increase little with density, implying that marginal protection costs are small in medium- and high-density areas. In low-population areas, however, adding more homes does increase the costs of fighting fires. This intensive margin distortion results in additional efficiency costs in these locations.

The preceding discussion does not account for pre-existing taxes that interact with the firefighting subsidy and presumably increase its efficiency costs. The favorable tax treatment of mortgage interest represents an important pre-existing subsidy to housing consumption (Poterba 1992). Collecting government revenues to fund firefighting (for example through income taxes) imposes additional efficiency costs. On the other hand, we also do not attempt to value the redistributive benefits that come from firefighting transfers to homeowners in low-income parts of the West.

7.1.2 Development density and lot size

These results also have implications for areas with existing home development.²⁶ Figure 4 shows that beyond net densities of roughly 0.17 homes per acre, expenditures on firefighting increase little with additional development. The degree to which per-capita fire protection costs decrease with density is one of the more surprising results in this study. This result suggests that protection from fires is non-rival: at medium and high densities, adding additional homes in the path of a fire does not seem to decrease the protection enjoyed by those already there. These economies of scale in fire protection imply cost savings from denser development. Providing fire protection for free removes the incentive to consider these economies, effectively subsidizing low-density development patterns.

Given the durable nature of housing, our protection costs are not high enough to justify abandonment of already-constructed homes. Thus, if a policy were implemented today that charged all new homes the marginal fire protection cost for their area, we would expect more construction in already-developed areas (relative to a regime with unpriced fire protection). To the extent that such “densification” is seen as an independently desirable outcome because of other market failures affecting land use, pricing fire protection may have additional benefits. Economists have identified market failures like congestion externalities that contribute to urban sprawl, while also recognizing that urban expansion reflects fundamentals like population growth and technological change (Brueckner 2001; Glaeser and Kahn 2004).

7.1.3 Private risk-reducing investments

In addition to changing incentives about where to build, free firefighting may affect incentives about how to build and maintain homes. A number of decisions during construction can reduce a home’s risk of damage during a wildfire, at some cost (either monetary or aesthetic). For example, homes can be built with highly fire-resistant roofing and other materials. Once the home is built, residents can protect the home by trimming vegetation to create “defensible space”. If these investments reduce the level of firefighting dispatch required to protect the home in the event

²⁶In the context of the model in Section 3, this amounts to considering what happens to the housing market during a second period in which the total number of households N increases.

of a fire, providing firefighting for free will lead to underinvestment in these partial substitutes.

Researchers report that many homeowners in WUI areas fail to create adequate defensible space around their homes, despite widespread outreach efforts by fire officials (Champ, Donovan, and Barth 2013; Dickinson, Brenkert-Smith, Champ, and Flores 2015). Underinvestment in self-protection could reflect frictions like imperfect information about risk or behavioral failures by homeowners. The substantial externalities that we identify in this paper are another possible explanation for low takeup of these investments. Local governments can mandate self-protection through building codes and vegetation inspections. However, their incentive to implement and enforce such regulations is lowered by the large share of firefighting costs shouldered by the federal government. We see further study of private and municipal investments in risk mitigation as an important area for additional research.

7.2 Policy Alternatives

Economic reasoning suggests that these potential distortions could be reduced by policies that internalize wildland firefighting costs. One possibility is to require homebuilders to pay a fee equal to the net present value of expected protection costs when building a new home in an undeveloped or sparsely-developed area. This policy leads homeowners to internalize firefighting costs in expectation. The empirical analysis presented in this study provides a road map for calculating this spatially-specific corrective tax. In addition to reducing moral hazard related to fire protection costs, such a policy may yield ancillary benefits by increasing the salience of wildfire risk for WUI homebuyers.

In 2014, California began requiring all homeowners in the Cal Fire protection area to pay an equal annual fee of about \$150 per year. The fee was unpopular among homeowners and was suspended in 2017. This study shows that such a fee would need to be much more geographically differentiated in order to correct incentives (as opposed to simply raising revenue for firefighting). Another lesson from this study is that exempting owners of existing homes may not change the effectiveness of the policy, since protection costs are not generally high enough to justify abandonment of existing homes. Such a change could increase the political acceptability of such a

price-based policy.

In principle, internalization of fire protection costs could also be achieved by recovering ex post firefighting costs instead of an ex-ante fee. Solvency concerns make recovering these costs from individual homeowners unlikely. However, firefighting costs could be charged to insurance companies holding policies near the ignition point of a fire. Such a rule would increase insurance premiums according to expected firefighting costs. In order to be effective, this policy may need to be coupled with a mandate that homeowners purchase insurance.

An alternative policy is to assign a larger share of the costs of fire protection to local governments, which would recover these costs through property taxes or other taxes. This approach would incentivize cities and counties to consider firefighting costs in zoning, land use, and building code decisions. Of course, it would not be efficient for each city or county to self-supply all of its firefighting needs. Firefighting could continue to be supplied via the current model of West-wide dispatch with local governments reimbursing the federal and state governments for a larger share of incident costs.

8 Conclusion

Unlike other types of natural disasters, a large share of the total costs of wildfires are incurred through costly efforts to prevent property damage. The federal and state governments spend billions of dollars each year fighting wildfires. We find that efforts to protect private homes account for most of this spending. This means that decisions by homeowners and local governments about siting, construction, and maintenance of homes in high fire-risk areas generate large cost externalities. We also find that beyond relatively low levels of housing development, the marginal effect of additional homes on firefighting expenditures is surprisingly small.

We use our results to calculate spatially-differentiated implicit subsidies for homes throughout the western United States. Wildfire spending represents a large transfer of federal and state revenues to a small number of landowners in high-cost places. In our highest-risk groups, the net present value of the expected future cost of fire protection is over 10 percent of the transaction value of a home. These results imply that

wildland fire protection is a quantitatively important mechanism for redistribution to such areas that has not been fully appreciated by economists.

We discuss three margins along which this implicit subsidy may distort outcomes in the housing market. The first is the location of new residential development. New development appears to be relatively price-elastic in the ex-urban and rural areas where we measure the largest implicit subsidies, implying potentially large amounts of excess development. Second, because per-household suppression expenditures decline sharply in housing density, providing fire protection for free effectively subsidizes low-density development and large lot sizes. Finally, homeowners face reduced incentives to make defensive investments in fire-resistant construction and vegetation management.

Assigning a larger share of wildland firefighting costs to local governments or individual homeowners would change incentives for residential development in high-risk areas. One such policy would be a spatially-differentiated “fire protection fee” for new construction that reflects the expected future wildland firefighting costs that will be incurred to protect the home. The empirical analysis in this study provides a road map for calculating such a fee.

More broadly, these results for wildfires underscore the importance of institutions in adapting to climate change. The costs of inefficient policies will continue to increase as the climate warms. For wildfires, as for many other impacts of climate change, the ultimate costs of a warmer planet will be determined not only by the degree of physical change but also by the mediating influence of public policy.

References

- Abatzoglou, John T, and A Park Williams. 2016. “Impact of anthropogenic climate change on wildfire across western US forests”. *Proceedings of the National Academy of Sciences* 113 (42): 11770–11775.
- Albouy, David. 2009. “The Unequal Geographic Burden of Federal Taxation”. *Journal of Political Economy* 117 (4): 635–667.
- Anas, Alex, and Chaushie Chu. 1984. “Discrete choice models and the housing price and travel to work elasticities of location demand”. *Journal of Urban Economics* 15:107–123.
- Anderson, Donald B. 1936. “Relative Humidity or Vapor Pressure Deficit”. *Ecology* 17 (2): 277–282.
- Balch, Jennifer K., Bethany A. Bradley, John T. Abatzoglou, R. Chelsea Nagy, Emily J. Fusco, and Adam L. Mahood. 2017. “Human-started wildfires expand the fire niche across the United States”. *Proceedings of the National Academy of Sciences* 114 (11): 2946–2951.
- Bartik, Timothy J. 1991. *Who Benefits from State and Local Economic Development Policies?* W.E. Upjohn Institute for Employment Research.
- Boustan, Leah Platt, Matthew E Kahn, and Paul W Rhode. 2012. “Moving to higher ground: Migration response to natural disasters in the early twentieth century”. *American Economic Review* 102 (3): 238–244.
- Brueckner, Jan K. 1997. “Infrastructure financing and urban development: The economics of impact fees”. *Journal of Public Economics* 66 (3): 383–407.
- Brueckner, Jan K. 2001. “Urban sprawl: Lessons from urban economics”. *Brookings-Wharton papers on urban affairs*: 65–97.
- Champ, Patricia A, Geoffrey H Donovan, and Christopher M Barth. 2013. “Living in a tinderbox: wildfire risk perceptions and mitigating behaviours”. *Int. J. Wildland Fire* 22 (6): 832–840.
- Davis, Mike. 1995. “The Case for Letting Malibu Burn”. *Environmental History Review* 19 (2): 1–36.
- Dickinson, Katherine, Hannah Brenkert-Smith, Patricia Champ, and Nicholas Flores. 2015. “Catching Fire? Social Interactions, Beliefs, and Wildfire Risk Mitigation Behaviors”. *Society & Natural Resources* 28 (8): 807–824.

- Dillon, Gregory K. 2015. *Wildfire Hazard Potential (WHP) for the coterminous United States (270-m GRID), version 2014 classified*. Forest Service Research Data Archive.
- Donovan, Geoffrey H., Patricia A. Champ, and David T. Butry. 2007. “Wildfire Risk and Housing Prices: A Case Study from Colorado Springs”. *Land Economics* 83 (2): 217–233.
- Faivre, Nicolas, Yufang Jin, Michael L Goulden, and James T Randerson. 2014. “Controls on the spatial pattern of wildfire ignitions in Southern California”. *International Journal of Wildland Fire* 23 (6): 799–811.
- Gebert, Krista M, David E Calkin, and Jonathan Yoder. 2007. “Estimating suppression expenditures for individual large wildland fires”. *Western Journal of Applied Forestry* 22 (3): 188–196.
- Glaeser, Edward L., and Joshua D. Gottlieb. 2009. “The Wealth of Cities: Agglomeration Economies and Spatial Equilibrium in the United States”. *Journal of Economic Literature* 47, number 4 (): 983–1028.
- Glaeser, Edward L, and Matthew E Kahn. 2004. “Sprawl and urban growth”. In *Handbook of regional and urban economics*, 4:2481–2527. Elsevier.
- Glaeser, Edward, and Joseph Gyourko. 2018. “The Economic Implications of Housing Supply”. *Journal of Economic Perspectives* 32 (1): 3–30.
- Gregory, Jesse. 2017. *The Impact of Post-Katrina Rebuilding Grants on the Resettlement Choices of New Orleans Homeowners*. Working Paper.
- Gude, Patricia H., Kingsford Jones, Ray Rasker, and Mark C. Greenwood. 2013. “Evidence for the effect of homes on wildfire suppression costs”. *International Journal of Wildland Fire* 22.
- Gude, Patricia, Ray Rasker, and Jeff van den Noort. 2008. “Potential for Future Development on Fire-Prone Lands”. *Journal of Forestry* 106 (4): 198–205.
- Halvorsen, Robert, and Raymond Palmquist. 1980. “The Interpretation of Dummy Variables in Semilogarithmic Equations”. *American Economic Review* 70 (3): 474–75.
- Hammer, Roger B, Susan I Stewart, and Volker C Radeloff. 2009. “Demographic trends, the wildland–urban interface, and wildfire management”. *Society and Natural Resources* 22 (8): 777–782.
- Hoover, Katie, and Bruce R Lindsay. 2017. *Wildfire Suppression Spending: Background, Issues, and Legislation in the 115th Congress*. Technical report. Congressional Research Service.

- Kennan, John, and James R Walker. 2011. “The Effect of Expected Income on Individual Migration Decisions”. *Econometrica* 79 (1): 211–251.
- Kennedy, Peter E. 1981. “Estimation with Correctly Interpreted Dummy Variables in Semilogarithmic Equations [The Interpretation of Dummy Variables in Semilogarithmic Equations]”. *American Economic Review* 71 (4): 801–801.
- Kousky, Carolyn, Erzo F. P. Luttmer, and Richard J. Zeckhauser. 2006. “Private investment and government protection”. *Journal of Risk and Uncertainty* 33 (1): 73–100.
- Kousky, Carolyn, and Sheila Olmstead. 2012. *Induced Development in Risky Locations: Fire Suppression and Land Use in the American West*. Working Paper.
- Liang, Jingjing, Dave E Calkin, Krista M Gebert, Tyron J Venn, and Robin P Silverstein. 2008. “Factors influencing large wildland fire suppression expenditures”. *International Journal of Wildland Fire* 17 (5): 650–659.
- Loomis, John. 2004. “Do nearby forest fires cause a reduction in residential property values?” *Journal of forest economics* 10 (3): 149–157.
- Lueck, Dean, and Jonathan Yoder. 2016. *Clearing the Smoke from Wildfire Policy: An Economic Perspective*. PERC Policy Series 56.
- Mann, Michael L., Peter Berck, Max A. Moritz, Enric Batllori, James G. Baldwin, Conor K. Gately, and D. Richard Cameron. 2014. “Modeling residential development in California from 2000 to 2050: Integrating wildfire risk, wildland and agricultural encroachment”. *Land Use Policy* 41:438–452.
- Martinuzzi, Sebastin, Susan Stewart, David Helmers, Miranda Mockrin, Roger Hammer, and Volker Radeloff. 2015. *The 2010 Wildland-Urban Interface of the Conterminous United States*. Research Map NRS-8. Newtown Square, PA: U.S. Department of Agriculture, Forest Service, Northern Research Station.
- Massada, Avi Bar, Alexandra D Syphard, Susan I Stewart, and Volker C Radeloff. 2012. “Wildfire ignition-distribution modelling: a comparative study in the Huron–Manistee National Forest, Michigan, USA”. *International Journal of Wildland Fire* 22 (2): 174–183.
- McCoy, Shawn J, and Randall P Walsh. 2014. *W.U.I. on Fire: Risk, Salience & Housing Demand*. Working Paper, Working Paper Series 20644. National Bureau of Economic Research.
- Muth, Richard F. 1971. “The Derived Demand for Urban Residential Land”. *Urban Stud.* 8 (3): 243–254.

- Polinsky, A Mitchell, and David T Ellwood. 1979. “An empirical reconciliation of micro and grouped estimates of the demand for housing”. *Review of Economics and Statistics*: 199–205.
- Poterba, James M. 1992. “Taxation and Housing: Old Questions, New Answers”. *American Economic Review* 82 (2): 237–242.
- Radeloff, Volker C, Roger B Hammer, Susan I Stewart, Jeremy S Fried, Sherry S Holcomb, and Jason F McKeefry. 2005. “The wildland–urban interface in the United States”. *Ecological applications* 15 (3): 799–805.
- Radeloff, Volker C, et al. 2018. “Rapid growth of the US wildland-urban interface raises wildfire risk”. *Proc. Natl. Acad. Sci. U. S. A.* 115, number 13 (): 3314–3319.
- Saiz, Albert. 2010. “The geographic determinants of housing supply”. *The Quarterly Journal of Economics* 125 (3): 1253–1296.
- Seager, Richard, Allison Hooks, A. Park Williams, Benjamin Cook, Jennifer Nakamura, and Naomi Henderson. 2015. “Climatology, Variability, and Trends in the U.S. Vapor Pressure Deficit, an Important Fire-Related Meteorological Quantity”. *Journal of Applied Meteorology and Climatology* 54 (6): 1121–1141.
- Simon, Gregory L. 2017. *Flame and Fortune in the American West: Urban Development, Environmental Change, and the Great Oakland Hills Fire*. 1st edition. University of California Press.
- Smith, V Kerry, Jared C Carbone, Jaren C Pope, Daniel G Hallstrom, and Michael E Darden. 2006. “Adjusting to natural disasters”. *Journal of Risk and Uncertainty* 33 (1): 37–54.
- Stephens, Scott L, Brandon M Collins, Eric Biber, and Peter Z Ful. 2016. “US federal fire and forest policy: emphasizing resilience in dry forests”. *Ecosphere* 7 (11).
- Stetler, Kyle M., Tyron J. Venn, and David E. Calkin. 2010. “The effects of wildfire and environmental amenities on property values in northwest Montana, USA”. *Ecological Economics* 69 (11): 2233–2243.
- Syphard, Alexandra D, Volker C Radeloff, Jon E Keeley, Todd J Hawbaker, Murray K Clayton, Susan I Stewart, and Roger B Hammer. 2007. “Human influence on California fire regimes”. *Ecological applications* 17 (5): 1388–1402.
- USDA Office of Inspector General. 2006. *Forest Service Large Fire Suppression Costs*. Audit Report 08601-44-SF.
- USDA Office of Inspector General Western Region. 2006. *Large Fire Suppression Costs*. Technical report. United States Department of Agriculture.

- Voith, Richard, Jan K Brueckner, and Douglas Holtz-Eakin. 2000. "Zoning and the Tax Treatment of Housing [with Comments]". *Brookings-Wharton Papers on Urban Affairs*: 239–274.
- Wibbenmeyer, Matthew. 2017. "Burning down the house: Wildfire and the benefits of responses to natural disasters". Working Paper.

Figure 1: The Market for Housing in a Risky Place

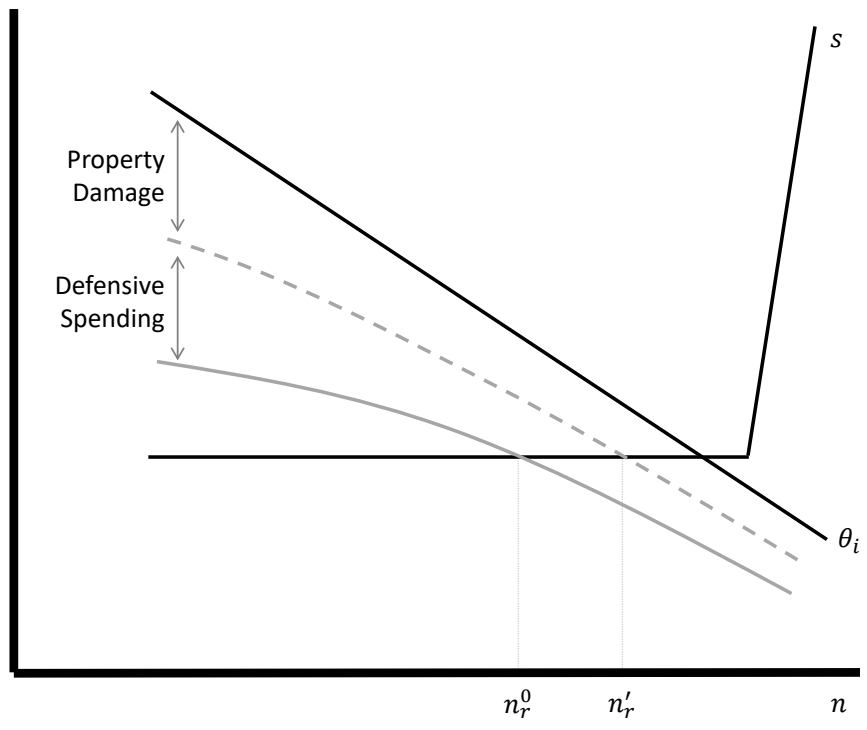
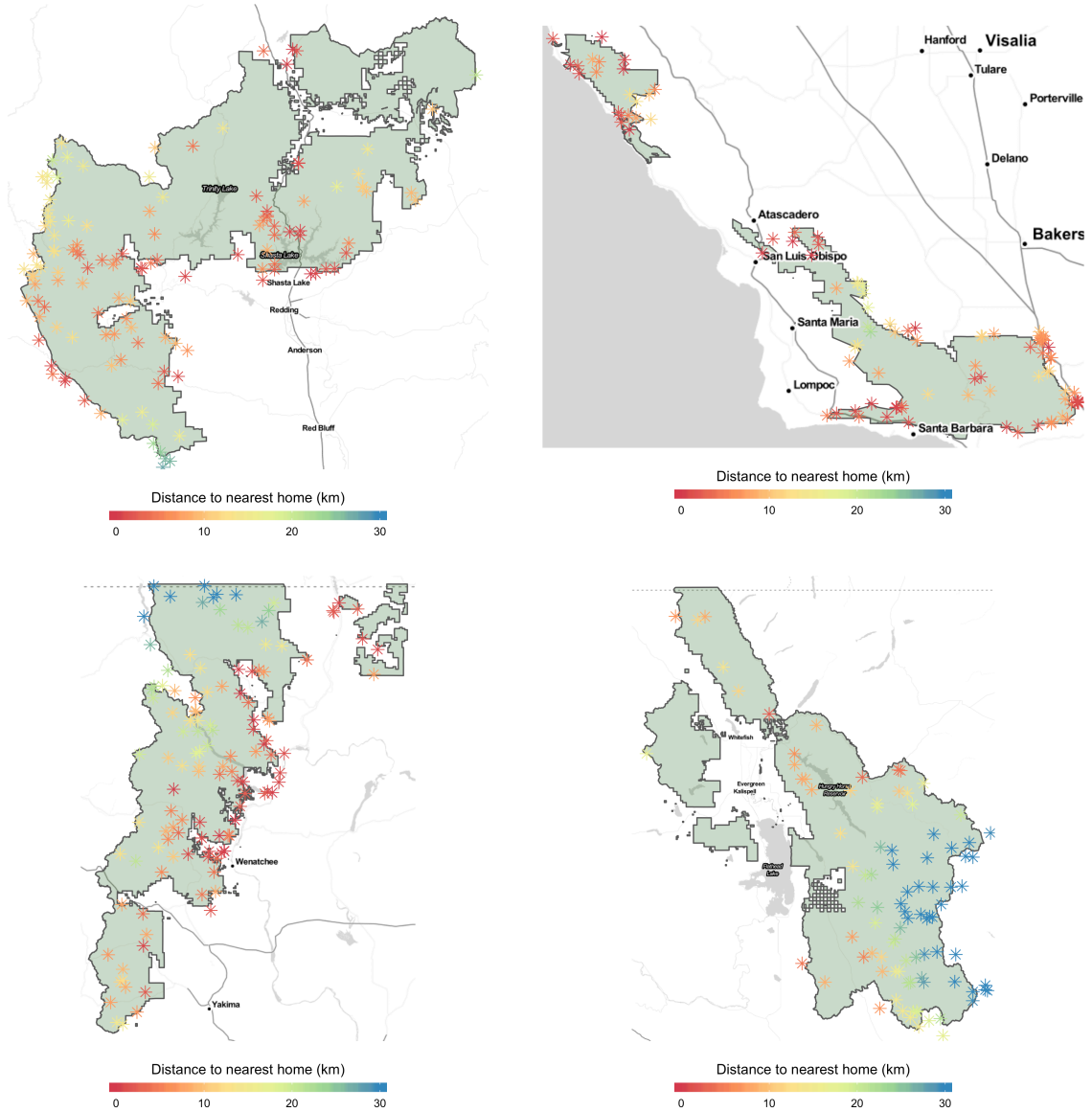
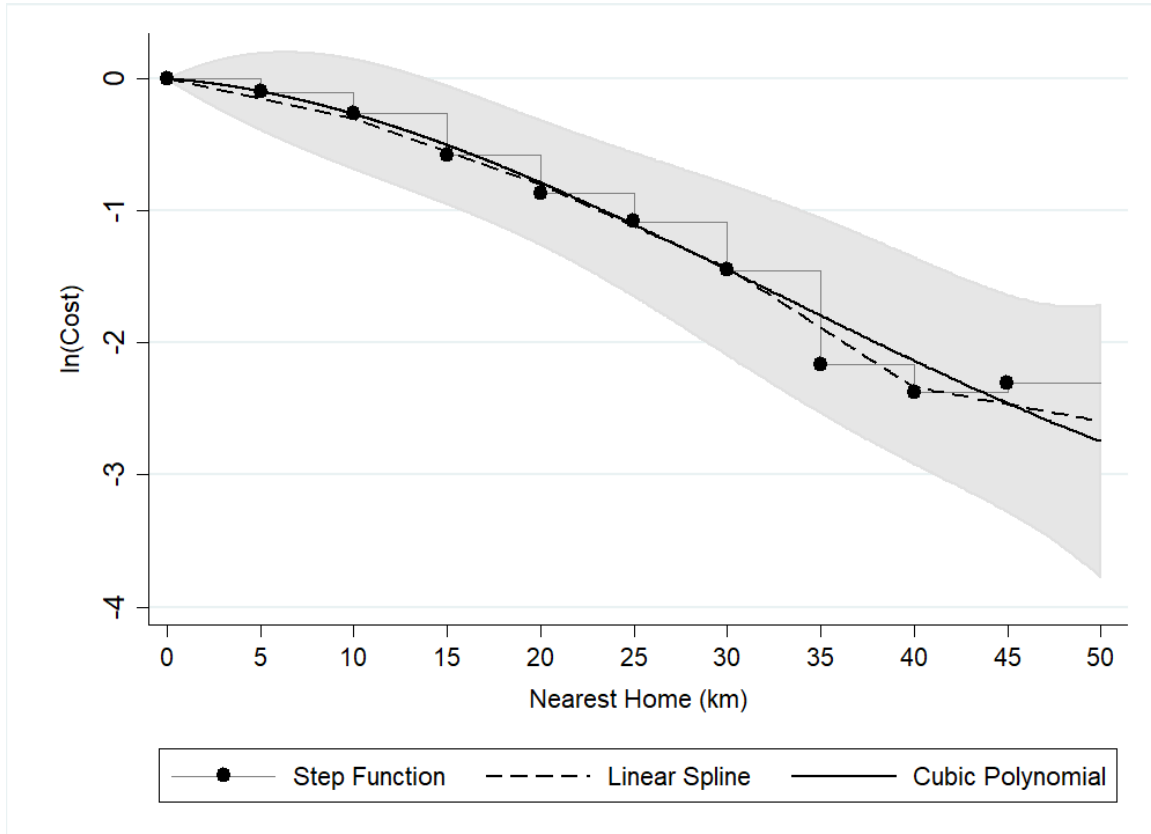


Figure 2: Example National Forest Units



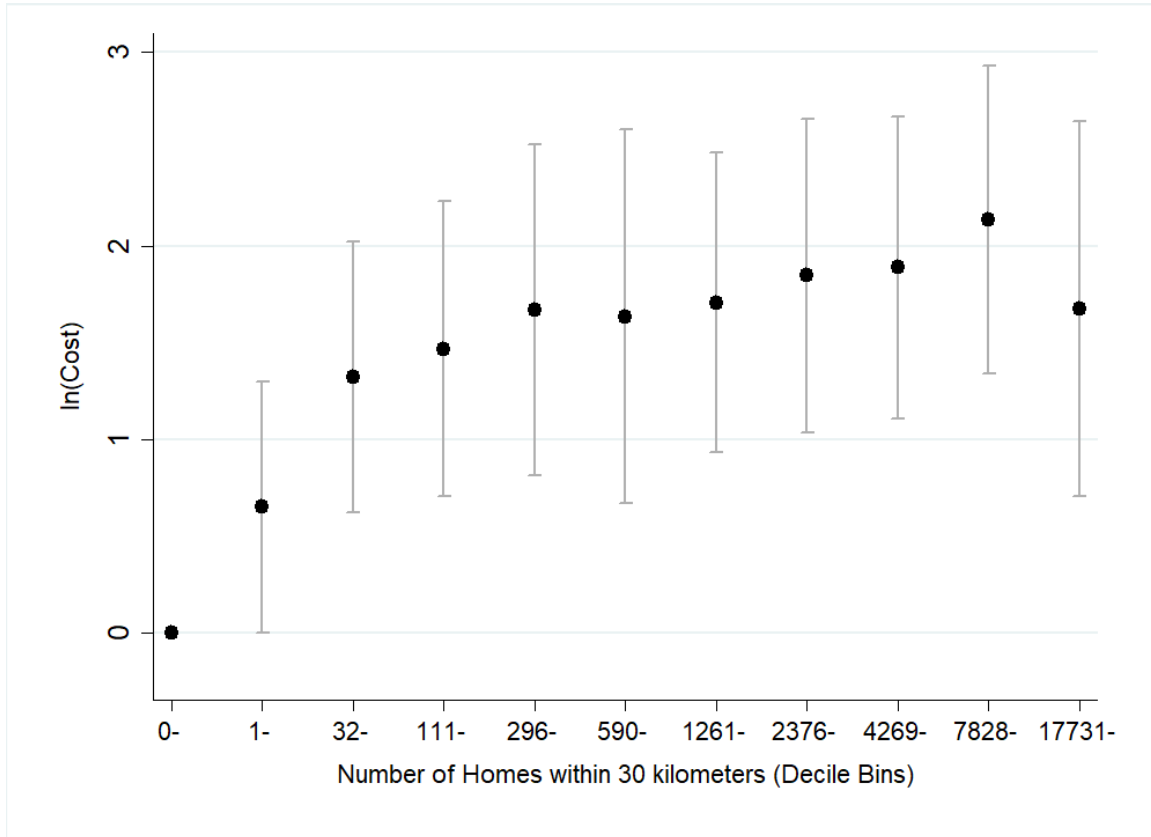
Notes: Each panel shows a single national forest area in light green. The X's represent individual wildfires, colored according to the distance to the nearest home. Clockwise from upper left, the forests are Shasta Trinity National Forest (California), Los Padres National Forest (California), Okanogan-Wenatchee National Forest (Washington), and Flathead National Forest (Montana).

Figure 3: The Effect of Homes on Firefighting Costs



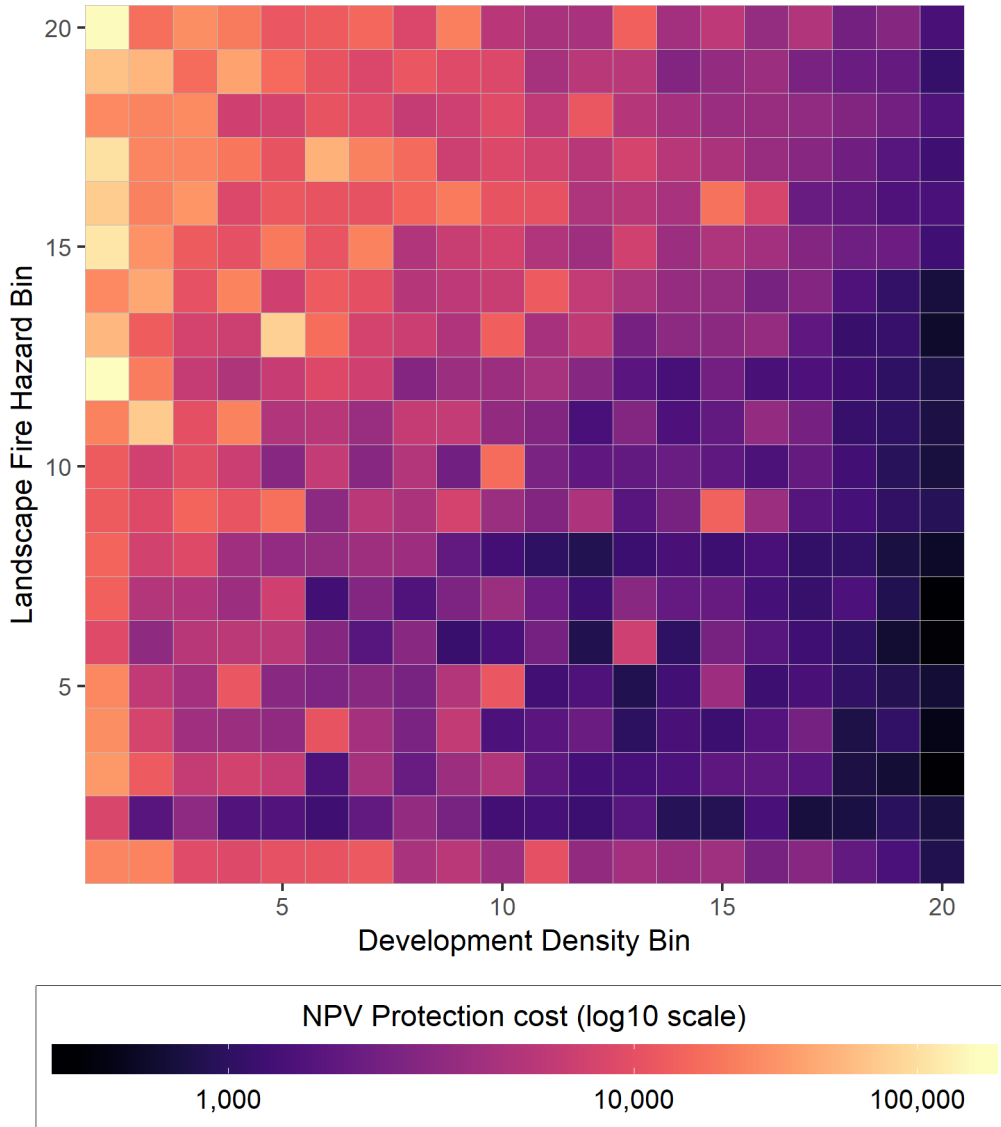
Notes: This figure reports results of three separate regressions of log firefighting cost on distance from the ignition point to the nearest home. The step function plots coefficients from a regression of log costs on indicators for 5 km distance bins. The linear spline is a piecewise linear regression with knots every 10 km. The gray shaded area around the cubic polynomial is the 95% confidence interval for that model. Each regression includes national forest fixed effects, state by month-of-year fixed effects, and state by year fixed effects. Standard errors are clustered by national forest.

Figure 4: Non-linear effects of the number of nearby homes



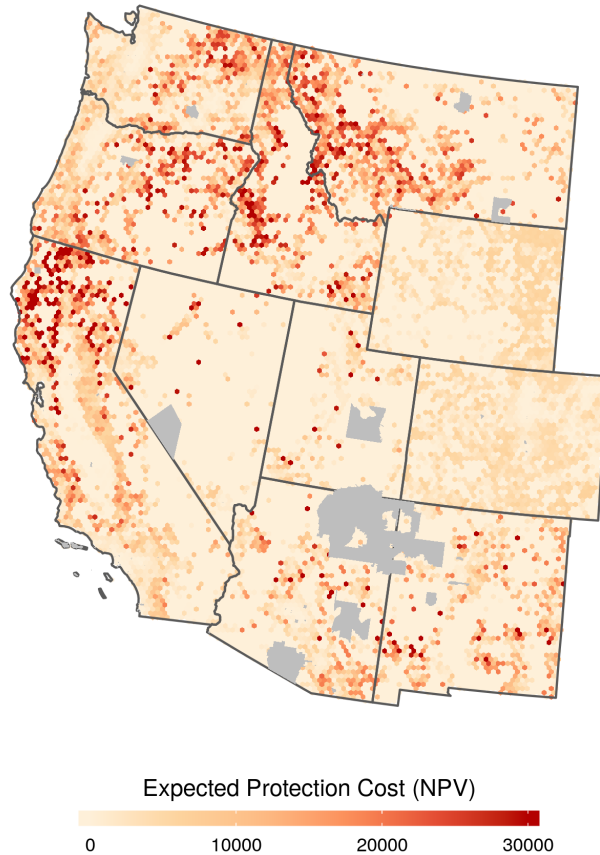
Notes: This figure reports results from a regression of log suppression cost on the number of homes near the ignition point. Points and error bars correspond to the point estimate and 95% confidence interval for the corresponding dummy variable in a regression of log fire suppression cost on deciles of home counts with 30 kilometers of the fire's ignition point. The regression includes national forest fixed effects, state by month-of-year fixed effects, and state by year fixed effects. Standard errors are clustered by national forest.

Figure 5: Average Protection Costs for 8 Million W.U.I. Homes



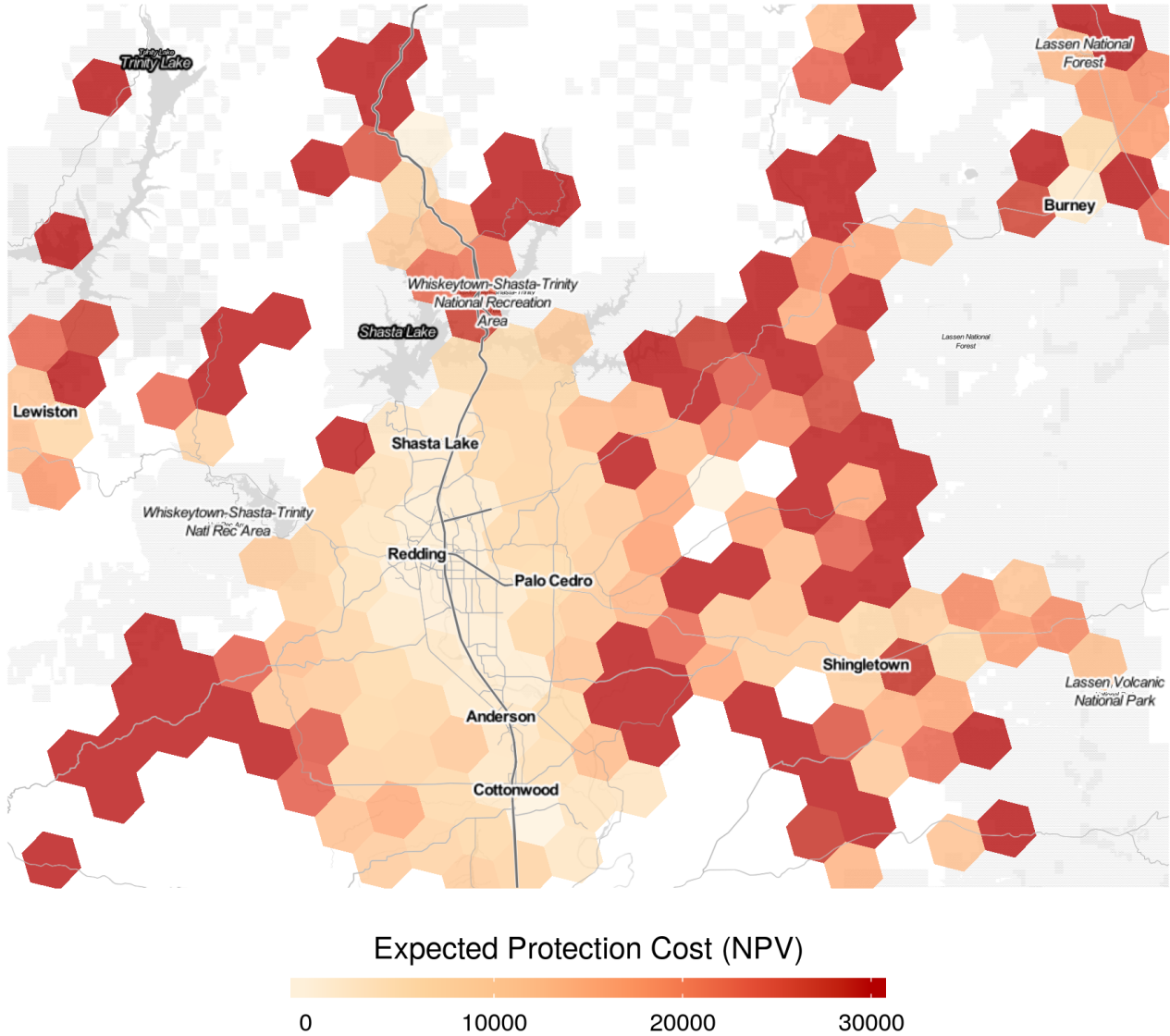
Notes: This figure shows the average net present value of realized historical protection costs according to fire hazard and development density. The horizontal axis shows 20 quantile bins defined by the grid cell-level distribution of population density in the study area. The 20 vertical-axis bins are defined by the wildfire hazard potential score (Dillon 2015). A single bin includes homes in areas with zero WHP, and the remaining 19 bins follow the distribution of non-zero WHP scores. Reported costs are NPV estimates based on the “suppression plus” cost metric and a 5% discount rate.

Figure 6: Expected Protection Cost by Region
“Suppression Plus” Cost Measure



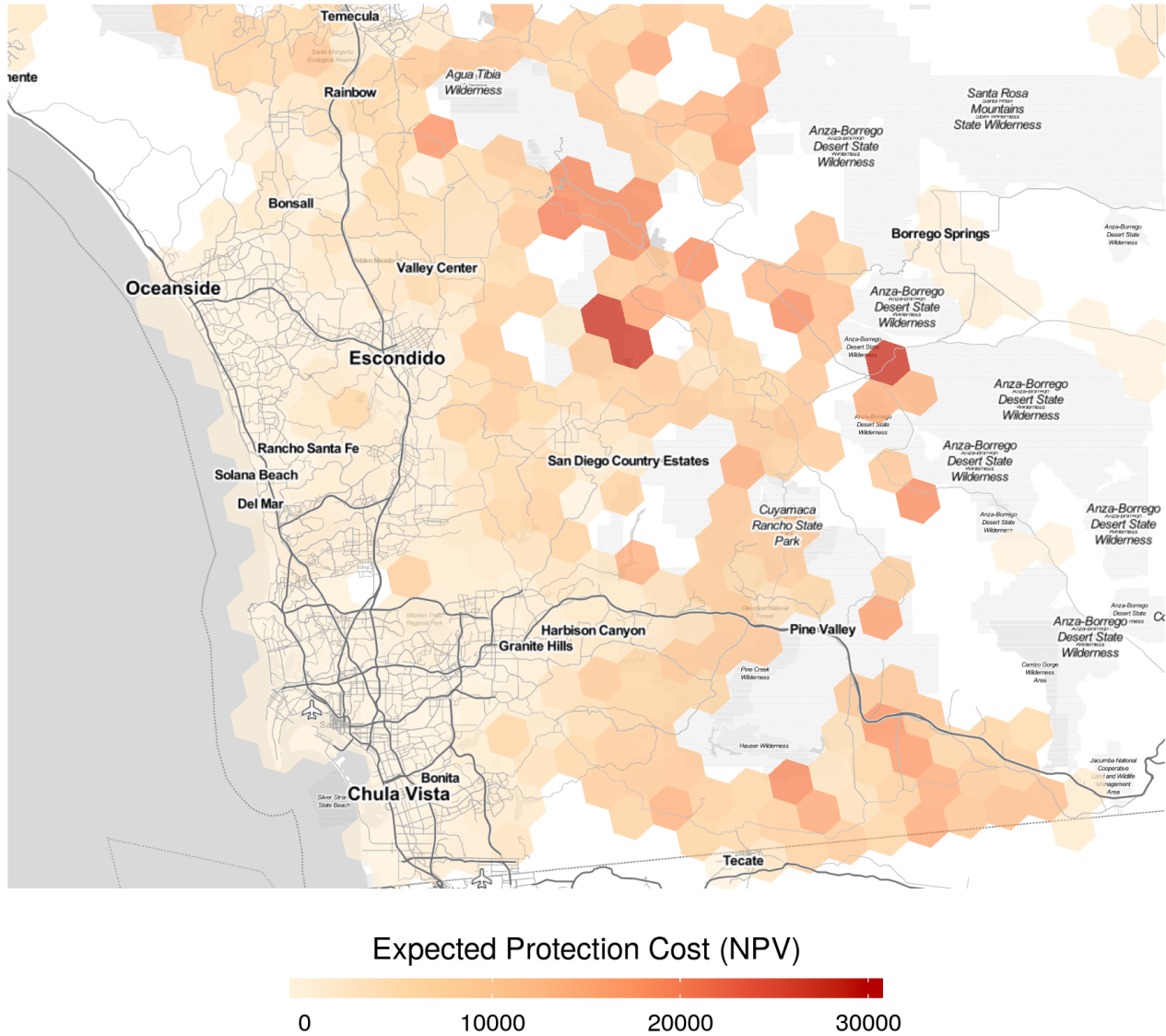
Notes: This figure shows the net present value of the additional future costs incurred by the federal government to protect a home from wildfires, averaged across 15 km hex cells. The sample includes 8 million homes near wildland vegetation areas. Map includes USFS and DOI direct suppression expenditures and preparedness costs, along with FEMA reimbursements to state firefighting agencies. See Section 6 for a detailed description of the construction of these measures. Units for the color scale are dollars per home. Gray areas indicate missing data (for example, Indian reservations).

Figure 7A: Local variation in Expected Cost



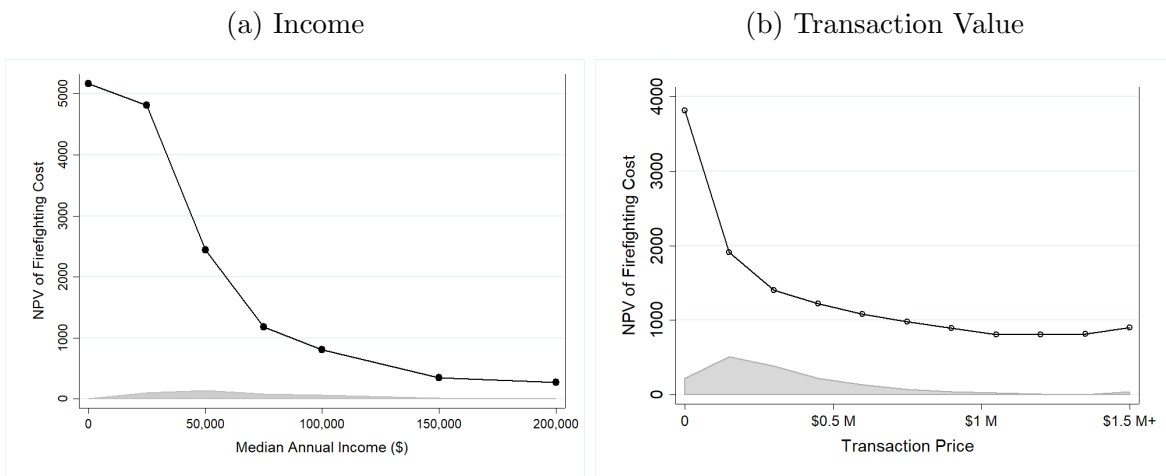
Notes: This map shows expected protection costs averaged by 5 km hex cells for Shasta County in Northern California. The color scale indicates the average expected NPV of a home's protection cost, and is top-coded at \$30,000. White and crosshatched areas are unpopulated areas and public lands.

Figure 7B: Local variation in Expected Cost, Continued



Notes: This map shows expected protection costs averaged by 5 km hex cells for San Diego County in California. The color scale indicates the average expected NPV of a home's protection cost, and is top-coded at \$30,000. White and crosshatched areas are unpopulated areas and public lands

Figure 8: Expected Parcel Protection Cost According to Income and Wealth



Notes: Each panel shows the variation in the net present value of expected protection costs along a single margin of interest. The black line in each panel shows average expected protection costs. The gray density shows the distribution of homes. Panel (a): Each home is assigned the median annual income for its Census block group from the 2015 American Community Survey. Panel (b): This calculation uses the subset of homes with non-missing transaction values; see data appendix for details.

Table 1: The Effect of Proximity to Homes on Firefighting Costs

	(1)	(2)	(3)	(4)	(5)
<hr/>					
Distance to Homes (km)					
10–20	-0.34** (0.15)	-0.34** (0.15)	-0.42** (0.19)	-0.37* (0.21)	-0.46 (0.32)
20–30	-0.98*** (0.28)	-0.92*** (0.27)	-1.01*** (0.37)	-0.99*** (0.35)	-1.52*** (0.57)
30–40	-1.74*** (0.46)	-1.67*** (0.45)	-1.68*** (0.51)	-1.72*** (0.50)	-2.50*** (0.73)
40+	-2.08*** (0.41)	-2.02*** (0.38)	-1.94*** (0.46)	-2.12*** (0.45)	-2.21** (0.91)
Controls for Weather, Topography, and Vegetation		X	X	X	X
National Forest FE	X	X	X	X	X
Year by State FE	X	X		X	X
Month-of-Year by State FE	X	X		X	X
Month-of-Sample by State FE			X		
Lightning fires only				X	
Timber Fuels only					X
<hr/>					
Fires	2,069	2,069	2,069	1,462	768
R ²	0.41	0.42	0.53	0.45	0.58
<hr/>					

Notes: This table reports the results of five separate OLS regressions. The sample includes western U.S. fires managed by the Forest Service during 1995–2014. In each regression the dependent variable is the natural log of suppression cost. The table rows report coefficients and standard errors on dummy variables corresponding to distance to the nearest home. The omitted category is 0–10 kilometers. Controls for weather, topography, and vegetation include wind speed, wind speed squared, terrain slope, slope squared, vapor pressure differential (VPD), VPD squared, precipitation, precipitation squared, an indicator for south/southwest facing, and indicators for fuel models (vegetation types) from LANDFIRE. Weather variables are measured on the day of ignition and topographic variables are measured at the ignition site. See online appendix for regression coefficients for these controls. National forest fixed effects include the 88 national forests in the western U.S. Standard errors are clustered at the national forest level.

Table 2: Expected Parcel Protection Costs for 8 Million Western Homes

	(1)	(2)	(3)	(4)
	Federal Suppression Only (\$)	Suppression Plus (\$)	California Only (\$)	Share of Property Value (%)
Mean	1,284	2,629	3,046	1.6
p50	700	1,400	1,600	0.7
p90	2,600	5,200	6,800	3.3
p95	4,000	8,800	9,100	5.8
p99	13,800	24,300	18,000	20.0
N	8,101,994	8,101,994	3,169,087	8,101,994.0

Notes: This table describes the distribution of expected firefighting costs for homes in the western United States states in our sample. These costs represent the additional costs incurred by the federal government to protect each home, and are calculated using 210 actuarial groups based on six categories of landscape fire risk, five categories of housing density, and seven wildland firefighting dispatch regions (GACC regions). Costs are present values using a 5% discount rate. The first three columns report expected costs using three different metrics defined in the text. The final column reports the “suppression plus” cost measure divided by the transaction value of the property. Values are in 2017 dollars. See text for details.

ONLINE APPENDIX

A	Additional Results and Robustness Checks	A2
A.1	Effect of Homes on Fire Costs: Robustness checks	A2
A.2	Effect of Homes on the Number of Fires	A7
A.3	Alternative Measures of Expected Protection Costs	A9
A.3.1	Measures based on Interview Evidence	A9
A.3.2	Maps of Suppression-Only and California-Specific Measures	A9
B	Construction of the dataset	A11
B.1	Wildland firefighting expenditures	A11
B.1.1	US Forest Service	A11
B.1.2	Department of Interior Agencies	A13
B.1.3	California Department of Forestry and Fire Protection	A13
B.1.4	Federal Emergency Management Agency	A14
B.1.5	Fire expenditures harmonization	A15
B.1.6	Ignition point characteristics and weather data	A15
B.2	Parcel data	A19
B.2.1	Comparison to Census aggregate data	A20
B.3	Calculation of the additional fire cost due to homes	A25
C	Comparison to Forest Service Accounting Data	A26

A Additional Results and Robustness Checks

A.1 Effect of Homes on Fire Costs: Robustness checks

Appendix Table I shows the results from Table 1 in the main text, including coefficients on the control variables as well as an additional “no controls” specification.

Appendix Table II shows additional robustness checks for the effects of the number of nearby homes on fire costs. Columns (1) through (5) show the same checks that we show in Table 1 for the effect of the nearest home on fire costs. Our results are robust to these various tests. The estimated effects of the other fire characteristics are also very similar to those in Appendix Table 1, as expected. Column (6) shows an additional specification that measures the stock of nearby homes by total transaction value, instead of number of homes. Results are similar.

Appendix Figure I shows the effects of the number of nearby homes on fire costs using alternative radii around the ignition point to count the number of homes. Each set of markers includes ten equal-observation bins corresponding to the distribution of number of homes, conditional on any homes within the radius. The omitted category in each regression is fires with zero homes within the radius. For all three radii, there is a clear pattern of quick increases across the first two bins, and then roughly constant costs at higher numbers of homes. Note that direct comparisons of these coefficients across bins are difficult, since the comparison group of fires with zero threatened homes is systematically different across columns (e.g., for 40 km, all fires with zero homes are very remote by construction). Several other effects also presumably occur simultaneously as we widen the radius: since further-away homes have less effect on costs, these measures attenuate somewhat; however, because calculating density over a wider area reduces noise in our assessment of the number of threatened homes, there is another factor making these measurements more precise. Finally, note that the actual bin endpoints vary across models. The choice of radius is ultimately a somewhat arbitrary decision. Importantly, however, the obvious non-linear pattern of costs by number of homes exists for any radius.

Appendix Figure II plots covariate overlap for the covariates included in the regressions.

Appendix Table I: The Effect of Proximity to Homes: Full Results

	(1)	(2)
10–20 km	-0.5236*** (0.1683)	-0.3394** (0.1484)
20–30 km	-1.1381*** (0.3278)	-0.9174*** (0.2702)
30–40 km	-2.5086*** (0.3750)	-1.6710*** (0.4508)
40+ km	-2.7259*** (0.3799)	-2.0173*** (0.3816)
WindSpeed		0.0644* (0.0345)
WindSpeed ²		-0.0017 (0.0013)
TerrainSlope		0.0414** (0.0180)
TerrainSlope ²		-0.0007* (0.0004)
VaporPressureDifferential		0.0680* (0.0369)
VaporPressureDifferential ²		-0.0015** (0.0007)
Precipitation		-0.0511 (0.0438)
Precipitation ²		0.0010 (0.0010)
South/SW Aspect		0.2357* (0.1348)
Shrub Fuel Model		-0.1258 (0.1920)
Timber Fuel Model		-0.0826 (0.1537)
Urban/Barren Fuel Model		-0.1856 (0.2449)
Constant	13.5350*** (0.1856)	10.8206*** (1.6206)
National Forest FE		X
Year by State FE		X
Month-of-Year by State FE		X
Fires	2,069	2,069
R ²	0.09	0.42

Notes: Column (2) reproduces Column (2) of Table 1, showing coefficients for the controls. Column (1) shows a no-controls specification for comparison. Terrain slope is the linear slope of the ground surface. Wind speed is average speed on the day of ignition at the reference weather station listed in FAMWEB (in miles per hour). Vapor pressure deficit is for the ignition location and day, from PRISM, and measured in hectopascals (millibars). Precipitation is the amount of precipitation on the ignition day in mm, from PRISM. Fuel model fixed effects include four categories corresponding to LANDFIRE fuel models for brush, grass, timber, and barren/urban/other. The omitted fuel model category is grass. Forest unit fixed effects include the 88 national forests in the Western U.S. Standard errors are clustered at the national forest level.

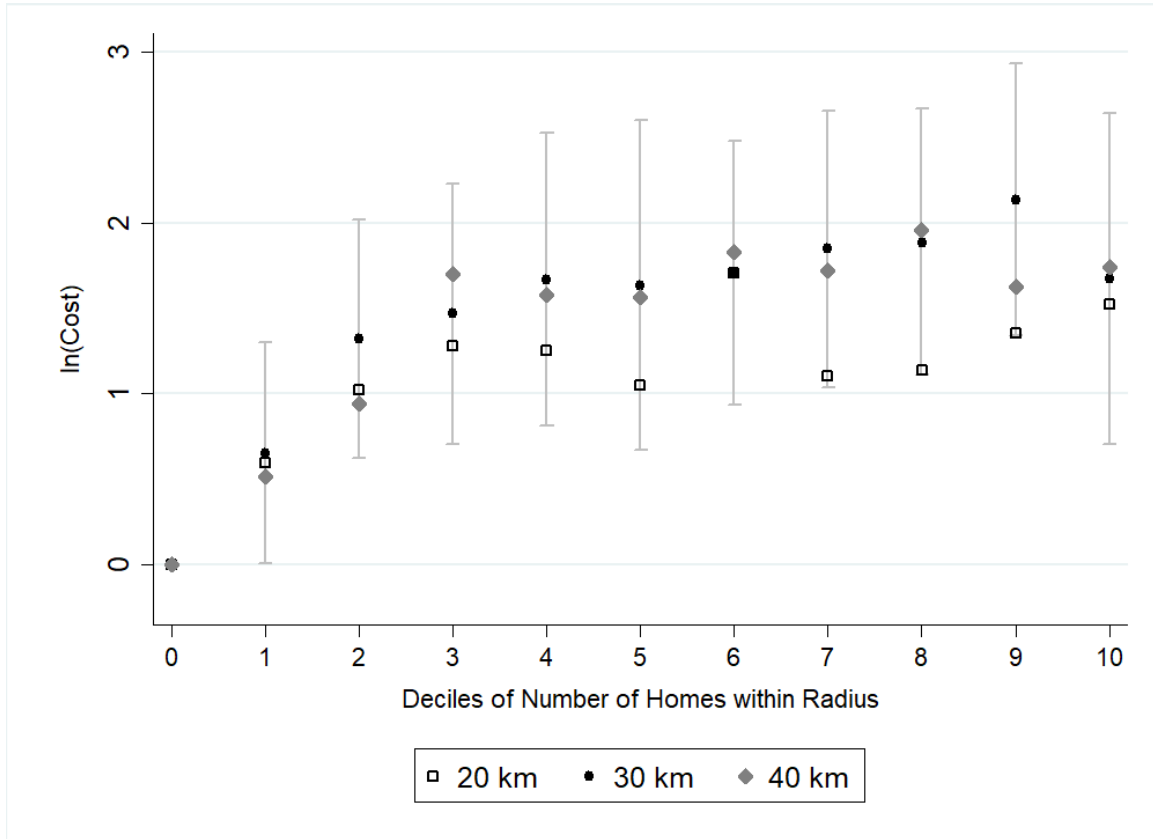
ONLINE APPENDIX

Appendix Table II: The Effect of Number or Value of Homes, Robustness Checks

	Number					Value
	(1)	(2)	(3)	(4)	(5)	(6)
<hr/>						
Quintile Bins						
1	0.97*** (0.31)	0.94*** (0.31)	0.90** (0.35)	1.00*** (0.34)	1.14 (0.69)	0.91*** (0.32)
2	1.53*** (0.38)	1.46*** (0.37)	1.38*** (0.40)	1.46*** (0.39)	1.41** (0.54)	1.44*** (0.39)
3	1.61*** (0.46)	1.57*** (0.43)	1.38*** (0.48)	1.43*** (0.46)	1.91*** (0.66)	1.69*** (0.39)
4	1.85*** (0.38)	1.77*** (0.36)	1.75*** (0.44)	1.74*** (0.42)	2.30*** (0.64)	1.64*** (0.36)
5	1.89*** (0.44)	1.82*** (0.41)	1.55*** (0.47)	1.77*** (0.50)	1.98*** (0.73)	1.95*** (0.39)
Controls for Weather, Topography, and Vegetation		X	X	X	X	X
National Forest FE	X	X	X	X	X	X
Month-of-Year by State FE	X	X		X	X	X
Year by State FE	X	X		X	X	X
Month-of-Sample by State FE			X			
Lightning fires only				X		
Timber Fuels only					X	
<hr/>						
N	2,069	2,069	2,069	1,462	768	2,069
R ²	0.41	0.42	0.53	0.44	0.57	0.42

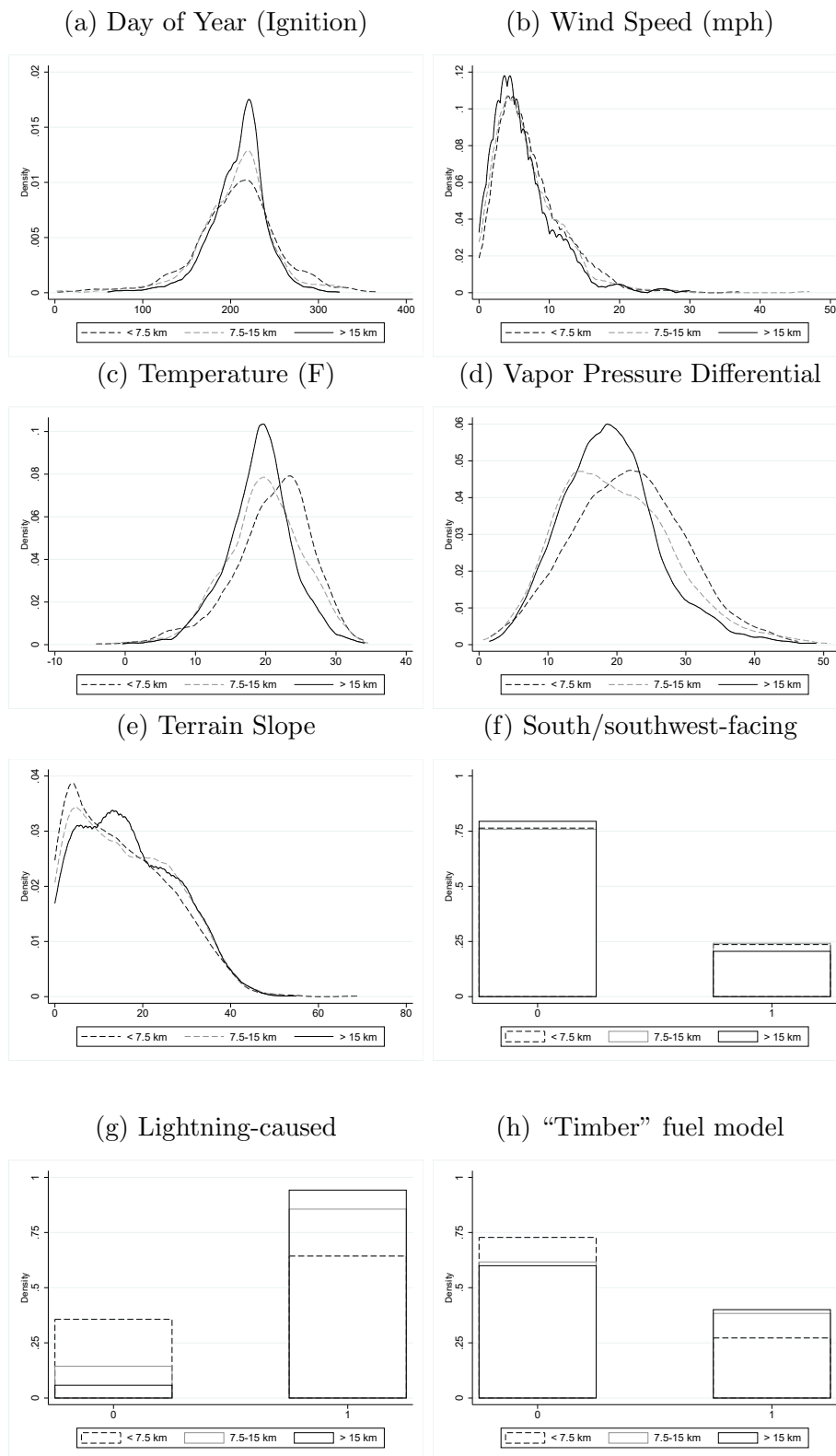
Notes: Columns (1) through (5) reproduces estimates from Figure 4 in the main text, using bins of the number of homes within 30 kilometers as the variables of interest. The bins are equal observation bins for fires with at least 1 nearby home (see Figure 4 for bin ranges). The omitted category is fires with zero nearby homes. Column (6) shows an alternative specification that measures the stock of homes within 30 km by total transaction value. Again, bins are equal observation bins for fires with at least 1 nearby home, and the excluded category is fires with zero nearby homes. See Table 1 for details on controls for weather, topography, and vegetation. Standard errors are clustered by national forest.

Appendix Figure I: Costs by Number of Homes: Alternative Radii



Notes: This figure reproduces Figure 4 from the main text using alternative radii. Each set of markers shows coefficients from a single regression using a different radius around the ignition point of the fire. The bins correspond to deciles of the distribution of number of homes within the radius, conditional on any homes within the radius. The omitted category in each regression is fires with zero homes within the radius. For all three radii, there is a clear pattern of quick increases across the first three to four bins, and then roughly constant costs at higher numbers of homes.

Appendix Figure II: Covariate Overlap by Distance from Ignition Point to Nearest Home



Notes: This figure shows covariate distributions for the US Forest Service fires analyzed in Table 1 and Figures 3 and 4. Panels (b), (c), and (d) report weather on the day of ignition. Wind speed is average wind speed from the reference weather station reported in FAMWEB. Temperature and vapor pressure differential are mean daily values from PRISM. Terrain slope is the slope percentage, where 100 corresponds to a slope of 1 (i.e., a 45-degree line). "Timber" fuel models follow the Anderson Fire Behavior Fuel Models.

A.2 Effect of Homes on the Number of Fires

To evaluate whether the addition of new homes causes a larger number of fires (in addition to larger expenses on each fire that occurs), we take advantage of panel variation in home construction near each of the national forests in our dataset. We construct a year-by-national forest panel including 67 national forests and 20 years of fire experience. Because new homes are most likely to affect the number of ignitions in places with relatively low levels of development, we exclude national forests that had more than 150,000 homes within 30 kilometers of the national forest boundary in 1995 (this excludes the 20% of most densely-populated national forests).

We implement a range of panel regression specifications. Our preferred statistical approach is a Poisson regression, since the number of fires in each national forest-year is a count variable with many zeros and a small number of other values.²⁷ The key identification challenge in this setting is to separate the effect of new home construction from other time-varying determinants of fire probability. Because homes are durable, the number of homes near each national forest increases monotonically across the sample. We adopt a variety of time trends and year fixed effects specifications to control as flexibly as possible for potential secular trends in the number of fires in each national forest caused by factors like climate change or annual drought cycles. Our results in this section should be interpreted with caution, since they rest on the somewhat strong assumption that, conditional on these controls, the trend in new home construction near each national forest is uncorrelated with other trends in fire occurrence.

Appendix Table III shows the results. All of these regressions include national forest fixed effects which remove the effect of time-invariant determinants of fire risk, such as local topography. Across specifications, new home development has a small positive effect on the number of fires each year. In Column (1), the estimated coefficient in the Poisson regression is 0.028. This implies that adding 1,000 new homes increases the annual number of fires in this national forest by 2.8%.²⁸ The average number of fires in each national forest-year is 1.7, so this implies that an additional 1,000 homes lead to 0.05 additional fires per year. Columns (2)–(5) include alternative polynomial time trends and find similar results. Column (6) instead includes year fixed effects, which allows for arbitrary annual trends at the West-wide level. Column (7) shows the same fixed effects specification in an OLS regression, for comparison to the Poisson results.

²⁷We address the limitation of classic count regression, the restriction that the mean equal the variance for the estimated effects, by using a cluster-robust variance estimator which eliminates this problem.

²⁸Expected changes in counts are calculated as $\exp^\beta - 1$, where β is the Poisson regression coefficient.

ONLINE APPENDIX

Appendix Table III: The Effect of Homes on the Number of Fires

	(1)	(2)	(3)	(4)	(5)	(6)	(7)
	Poisson	Poisson	Poisson	Poisson	Poisson	Poisson	OLS
Thousands of Homes	0.028*** (0.005)	0.035*** (0.007)	0.029*** (0.008)	0.037*** (0.008)	0.033*** (0.007)	0.030*** (0.008)	0.021* (0.011)
National Forest FE	X	X	X	X	X	X	X
Linear Time Trend		X					
Quadratic Time Trend			X				
Regional Linear Trends				X			
Regional Quadratic Trends					X		
Year Fixed Effects						X	X
N	1,060	1,060	1,060	1,060	1,060	1,060	1,060

Notes: This table reports the results of seven separate regressions. In each regression the dependent variable is the number of fires larger than 300 acres in each national forest-year. Columns (1)-(6) show results for several Poisson regression specifications, and Column (7) shows an OLS specification for comparison. The variable of interest is the number homes within 30 kilometers of the national forest boundary, in thousands. The table reports regression coefficients and standard errors, which are calculated using a cluster robust variance estimator at the national forest level. For the Poisson specifications, the coefficients can be converted to expected percentage changes in the number of large fires using calculation $e^\beta - 1$. See text for details. The mean number of fires in each national forest-year is 1.7. “Regional Linear Trends” and “Regional Quadratic Trends” indicate that the regression includes separate polynomial time trends for each of the five forest service regions included in the sample area.

A.3 Alternative Measures of Expected Protection Costs

A.3.1 Measures based on Interview Evidence

Table IV compares implicit subsidy estimates using two methods to measure the share of expenditures devoted to protecting homes. Columns 1A, 2A, and 3A show the main estimates from Table 2. Spending on home protection for each incident is the difference between observed costs and predicted costs for that fire in the absence of nearby homes, using the regression model in Section 5. Columns 1B, 2B, and 3B compute analogous subsidy estimates under the alternative assumption that 72.5% of all fire costs are attributable to protecting homes, based on USDA Office of Inspector General (USDA, 2006). Comparing 1A to 1B, 2A to 2B, and 3A to 3B shows relatively small differences.

Appendix Table IV: Expected Parcel Protection Costs, Alternative Estimates

	Federal Suppression Only (\$)		Suppression Plus (\$)		California Only (\$)	
	(1A)	(1B)	(2A)	(2B)	(3A)	(3B)
Mean	1,284	1,015	2,629	2,160	3,046	2,416
p50	700	500	1,400	1,100	1,600	1,200
p90	2,600	2,100	5,200	4,500	6,800	5,400
p95	4,000	3,200	8,800	7,300	9,100	7,200
p99	13,800	11,400	24,300	22,300	18,000	16,500
N	8,101,994	8,101,994	8,101,994	8,101,994	3,169,087	3,169,087

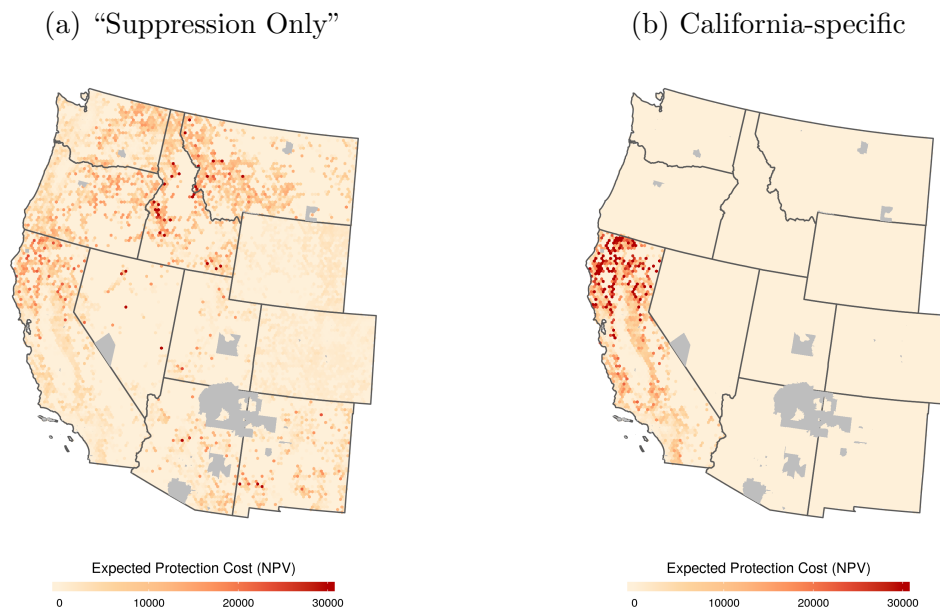
Notes: Columns 1A, 2A, and 3A are identical to Table 2. Columns 1B, 2B, and 3B assume that 72.5% of all fire costs are attributable to homes. The method used to divide protection expenditures across individual homes is the same as in the main analysis.

A.3.2 Maps of Suppression-Only and California-Specific Measures

Appendix Figure III reproduces the map in Figure 6 using the alternative measures of expected protection cost described in Section 6.1 of the main text. Panel A uses the Suppression Only cost measure described in Sections 6.1.1 – 6.1.2. Panel B uses

ONLINE APPENDIX

Appendix Figure III: Expected Protection Cost by Region, Alternative Measures



Notes: This figure reproduces Figure 6 showing alternative measures of expected protection cost. See Section 6 for a detailed description of the construction of these measures. Units for the color scale are dollars per home. The California-specific measure in Panel (b) is displayed as zero for areas outside California.

the California-only cost measure described in Section 6.1.4. The California-specific measure is displayed as zero for all areas outside California.

B Construction of the dataset

Our data combine administrative data on firefighting expenditures from multiple agencies, parcel-level assessor data for the universe of western U.S. homes, topographical information, risk assessments, and weather conditions data. This section provides a complete account of the dataset construction; readers should refer to section Section 4 in the main paper for a high-level summary. Table V gives descriptive statistics for the dataset, Figure II shows how fire observables covary with distance from homes, and Figure IV maps all of the large fires in the sample, colored by agency.

B.1 Wildland firefighting expenditures

The fire suppression and preparedness cost data come from six different sources, including five federal agencies and one state firefighting agency. The federal agencies are the United States Forest Service, the National Park Service, the Bureau of Land Management, the Bureau of Indian Affairs, and the Federal Emergency Management Agency. The state agency is California’s Department of Forestry and Fire Protection (Cal Fire). We obtained firefighting data at the incident level from each agency through a combination of Freedom of Information Act (FOIA) requests (or similar records requests for state data) and publicly available sources. Our geographical focus is the western United States. We define the “western United States” as the states of Arizona, California, Colorado, Idaho, Montana, New Mexico, Nevada, Oregon, Utah, Washington, and Wyoming. We discuss each source of data in detail below, as well as the process by which we harmonize these datasets.

B.1.1 US Forest Service

The U.S. Department of Agriculture, Forest Service (USFS) accounts for the largest share of fire suppression expenditures of any federal agency and is primarily responsible for fires that ignite in or near the boundaries of National Forest areas. We obtain historical by-incident suppression costs (primarily wage and equipment costs incurred by USFS) for fires managed by the USDA Forest Service from 1995 to 2017 from the National Fire and Aviation Management Web (FAMWEB) Database. Some institutional detail is helpful in understanding the process by which the data are compiled: the FAMWEB database represents a compilation of individual reports on fire occurrence, the conditions in which the fire ignited, and the suppression efforts undertaken by USFS. These reports are entered into the Fire Statistics System (FIRESTAT) application, which is run by the USFS. FAMWEB is the database which contains this

information.²⁹

Gebert, Calkin, and Yoder (2007) argue that fire suppression costs are captured more accurately by USFS accounting data than in the FAMWEB database. We therefore also obtain separate USFS accounting data on incident level expenditures through a separate Freedom of Information Act request. However, USFS was only able to provide these records for the period 2004–2012. In Appendix Section C, we conduct our empirical analysis using both the accounting data and a subset of the FAMWEB data limited to 2004–2012 and find both qualitatively and quantitatively similar results. We conclude that inaccuracies in the FAMWEB database are sufficiently limited within our sampling frame to have limited impact on our empirical questions of interest and therefore conduct the bulk of our analysis with the FAMWEB data because of its greater temporal coverage.³⁰

Over the course of our sampling frame, more than 150,000 wildfire incidents are logged in this database. However, since the Forest Service only reports per-fire cost data for fires above 300 acres, we limit this sample to the 2,419 fires in the 11 western states with a size of 300 acres or larger (the smallest size for which suppression expenditures are separately reported) for which the Forest Service was the jurisdictional owner. We also require that each fire have suppression cost, ignition date, and location data available.

Most ignitions are quickly suppressed at low marginal cost by “initial attack” efforts. These incidents are not included in our dataset of large fires. We address this in Section 6 by incorporating data on preparedness expenditures for USFS and the DOI agencies: these are expenditures that occur not in direct response to any particular large wildfire, but instead are undertaken to prevent or mitigate future fire risk. To identify these costs, we obtain budget justification reports from the US Forest Service website for the years 2007-2017. From these documents we extract the region-specific spending allocated towards “Fire Preparedness.” In total we obtain more than 6.8

²⁹Previously, these data were compiled using Kansas City Fire Access Software, or KCFAST. Both KFCFAST and FAMWEB include data on suppression expenditures and fire locations, but FAMWEB is the more current and complete of the two, with one exception: FAMWEB does not include any data on which agency was responsible for a given ignition or on the wind speed and direction at the nearest weather station at time of ignition. To obtain these additional fields, we also load and merge in the KCFAST dataset.

³⁰A more subtle difference between this study and Gebert, Calkin, and Yoder (2007) is that the latter authors use the fire cost per acre as the outcome variable when considering the drivers of wildfire suppression costs, arguing that “fire managers are accustomed to thinking in terms of cost per acre,” and also include the natural log of total acres burned as an explanatory variable. We choose to use total cost as the outcome variable in our regression analysis of incident costs. We also do not include a measure of acres burned as an explanatory variable. We prefer this specification for two reasons: the policy-relevant figure is the total cost of suppression; and acreage burned as the denominator and size of fire as an explanatory variable induces a reverse causality problem (since acreage is a function of suppression effort) and a “bad controls” problem (Angrist and Pischke 2009).

billion dollars of preparedness spending for our sampling frame.³¹ These preparedness costs represent the cost of maintaining initial attack readiness and other fixed costs of the wildland firefighting system. Section 6 describes how we allocate these costs over ignitions.

B.1.2 Department of Interior Agencies

Four separate agencies within the Department of Interior (DOI) engage in significant fire management. They are the Bureau of Land Management (BLM), the Bureau of Indian Affairs (BIA), the National Park Service (NPS), and the U.S. Fish and Wildlife Service (FWS). We successfully obtained firefighting cost data for BLM, BIA, and NPS through FOIA requests³². BLM is responsible for fires that ignite on the 248 million acres of public lands they manage. BIA is responsible for fires starting on the 55 million acres of Indian trust lands, and NPS is responsible for fires igniting within its 417 park units across 84 million acres of land. Each agency provided incident-level data from 2003-2016 from its own accounting databases for fires larger than 100–300 acres. To match the data available from the Forest Service, we limit this sample to include only fires that were the jurisdictional responsibility of the given agency and that affect more than 300 acres and apply similar data quality restrictions as those described for the USFS data. Our final DOI suppression dataset includes 1,617 BLM fires, 315 BIA fires, and 126 NPS fires.

As with USFS, we also include DOI preparedness costs in some scenarios in Section 6. The DOI agencies collectively prepare one annual budget justification that covers wildland fire activities across the entire United States. Our data on DOI preparedness costs come from the fiscal year 2012–2018 versions of these documents. In total, we account for 2.7 billion dollars of preparedness spending. Because DOI does not provide region-specific figures for these preparedness costs, we allocate them according to the proportion of total U.S. ignitions that occur within our sampling frame on an annual basis. On average, we allocate 54% of this preparedness spending to our study area to obtain a total of 1.5 billion dollars from the DOI agencies.

B.1.3 California Department of Forestry and Fire Protection

We also collect fire suppression cost data for California, which includes over 50% of the population in our sample area and some of the most frequent and costly wildfires.

³¹The Forest Service regions corresponding to our sampling frame are 01, 02, 03, 04, 05, 06, 08, 09, and 10.

³²At the time of this writing, we have not obtained firefighting suppression costs for FWS. Using the Federal Fire Occurrence Database, we find that FWS reports fewer fires and fire acres than either USFS or BLM, but more than BIA and NPS.

Suppression cost data for California come from a public records request to the California Department of Forestry and Fire Protection (Cal Fire). Cal Fire is responsible for managing wildfires on 31 million acres of State Responsibility Area lands, loosely corresponding to private- and state-owned lands outside of incorporated towns and cities. We merge three sets of administrative records from Cal Fire. The first is a complete listing of all reported wildland fire incidents in the Cal Fire protection area during 2007–2016, regardless of size. This dataset includes the ignition date, acres burned, Cal Fire geographic unit, and, for incidents after mid-2011, the latitude and longitude of the ignition point.³³ The third dataset is an administrative record of firefighting expenditures at the incident level for 788 incidents during 2011–2016. According to Cal Fire, these expenditure data are carefully tracked because they are the basis of cross-agency reimbursements for mutual aid expenditures – for example, reimbursements to California by the federal government under the FEMA Fire Management Assistance Grant (FMAG) program, or by local governments to CAL FIRE for firefighting assistance in incorporated areas.

Beginning with the list of significant fires, we drop those that are not the jurisdictional responsibility of CAL FIRE. Limiting our sample to fires for which we are able to obtain precise location and suppression cost data results in 104 large fires (and 317 fires of any size) from 2011–2016.

B.1.4 Federal Emergency Management Agency

Our final agency source is the Federal Emergency Management Agency (FEMA). FEMA does not directly engage in firefighting efforts. Instead, FEMA reimburses state agencies and local governments for their costs on large firefighting efforts through the Fire Management Assistance Grant (FMAG) program. These grants reimburse 75% of the firefighting expenses incurred by state and local governments during qualifying incidents. We obtained incident-level data on FEMA reimbursements for wild-fire incidents during 2000–2017 through a Freedom of Information Act request. These records contain the incident name, date, state, and amount reimbursed. They do not contain geographic coordinates (or a common identifier that would allow us to merge them to other agency data to recover geographic information). For cost scenarios in Section 6 that include FEMA reimbursements, we allocate these costs, multiplied by 1.33 to include the non-reimbursed portion, over fires in each year-state cell similarly to preparedness costs. In any calculation where we include Cal Fire cost data, we do not include FEMA reimbursements to California, which presumably include costs incurred by Cal Fire.

³³To supplement the location records for earlier fires, we also obtain shapefile data for a subset of CalFire incidents from the publicly available Fire and Resource Assessment Program database managed by Cal Fire.

B.1.5 Fire expenditures harmonization

To ensure consistent data quality, we harmonize the data across all agencies from which we source suppression expenditures. Specifically, we ensure that ignition date, ignition location, responsible agency, cause of fire, area burned, and suppression cost data are present for all incidents and that the costs reflect values in 2017 dollars. Federal, state, and local firefighting agencies provide assistance to one another through coordinated dispatch systems and mutual aid agreements. We carefully considered the implications of this aid for our analysis. We confirmed with each agency that its reported costs represent only that agency’s costs for a given incident (except for FEMA reimbursements). Thus, we avoid double counting when adding up historical costs across agencies in Section 6. When investigating the effect of homes on costs in Section 5.1, we use only USFS cost data and further limit the sample to incidents where USFS was the primary responsible agency. This restriction is used by Gebert, Calkin, and Yoder (2007), who argue that USFS bears at least 90% of the costs of these fires.³⁴

We have also attempted to ensure that cost concepts are at least broadly comparable across agencies. In general, the firefighting cost data in the final dataset include wages (salaries, overtime, hazard pay) and equipment costs. Usage costs for agency-owned equipment (as opposed to equipment from private contractors) are tracked somewhat differently by different agencies. For example, in direct correspondence BLM indicated that they assign mileage costs for regular vehicles and engine-hour costs for fire engines to each incident, while NPS indicated that they assign only fuel and repair costs. The allocation of salary costs between “preparedness” and “suppression” budget categories may also differ somewhat across agencies.

Finally, we compute the spatial relationship between each fire and potentially valuable resources nearby. Specifically, we measure the distance from the ignition point of each fire to the nearest parcel in the parcels dataset described in Section B.2, the nearest state or federal highway, and the count of homes and their value within x km of the ignition point, where $x \in \{5, 10, \dots, 50\}$.

B.1.6 Ignition point characteristics and weather data

Using the harmonized location data, we obtain elevation, slope, aspect, and fuel model data for the ignition point of each fire from LANDFIRE. The former three products are derived from the high-resolution National Elevation Dataset; elevation represents the land height above sea level and is given in meters, slope represents the

³⁴Ideally, we would sum each agencies expenditures on each individual incident. Unfortunately, USFS and the DOI agencies do not reliably use consistent incident identifiers, making such a merge impossible.

ONLINE APPENDIX

angle of the land and is given in degrees, and aspect represents the direction of the slope and is given in degrees as well. The fuel model data are the 13 Anderson Fire Behavior Fuel Models and describe the fire potential of surface fuel components (e.g., the type of foliage in the area). We also obtain ignition-day weather (maximum and minimum temperatures, precipitation, and measure of humidity) from the PRISM daily weather dataset, as well as ignition-day wind direction and speed from the FAMWEB dataset.

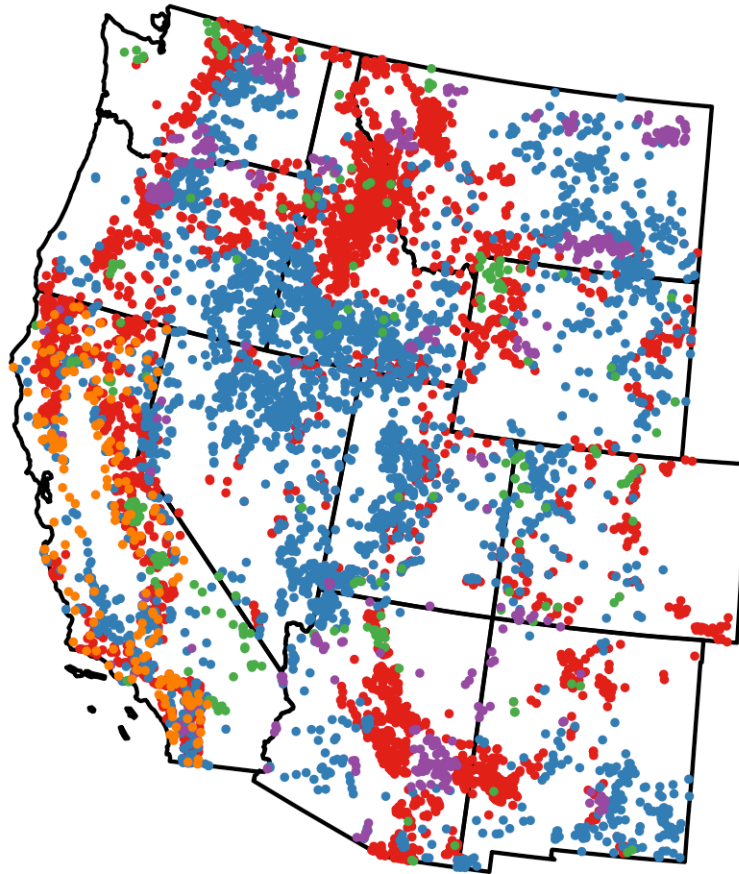
ONLINE APPENDIX

Appendix Table V: Descriptive statistics

<i>Panel A: Pooled fire characteristics</i>					
	Mean	P10	P50	P90	
Area burned	7,873	383	1,433	16,034	
Fire cost	2,350,820	9,066	227,461	5,233,689	
Elevation	1,554	707	1,559	2,353	
Slope	12	1	10	29	
Aspect	142	-1	135	306	
Temperature	20	13	21	27	
Precipitation	0	0	0	1	
Vapor Pressure Deficit	21	11	21	32	
Nearest home distance	14	1	10	33	
Parcels in 5km	147	0	0	107	
Parcels in 10km	709	0	0	1,027	
Parcels in 20km	3,110	0	92	6,768	
Value in 5km	43,204	0	0	18,536	
Value in 10km	199,741	0	0	180,938	
Value in 20km	883,434	0	13,194	1,392,367	
<i>Panel B: Fire characteristics by agency</i>					
	USFS	BLM	BIA	NPS	CAL FIRE
Number of fires	2,419	1,617	315	126	104
Acres burned (1000s)	19,442	13,435	1,814	685	690
Suppression cost (m)	8,799	507	257	94	854

Notes: This table reports descriptive statistics for fires with area greater or equal to 300 acres in our sample. P10, P50, and P90 indicate the 10th, 50th (median), and 90th percentile of values. Aspect is given in degrees, elevation is in meters above sea level, fire cost is in 2017 US \$, nearest home distance is in kilometers, parcels is the number of parcels within the given distance, precipitation is in mm, slope is in degrees, temperatures is in Celsius, and Vapor Pressure Deficit is in millibars.

Appendix Figure IV: Western Wildfires, 1995–2017



• USFS • BLM • NPS • BIA • Cal Fire

Notes: Map of fires in sample. Includes all fires between 1995 and 2017 larger than 300 acres. Color of point indicates which agency provided data.

B.2 Parcel data

The homes data include information on home locations, values, year built, and other property characteristics for 18.5 million parcels, or nearly all of the single-family homes in the western United States. We also include parcels within 50 km of these states to accurately capture the nearness and number of parcels for wildfires that occur near the eastern borders of our sample. These data represent a compilation of tax assessor data from individual counties.³⁵ A primary advantage of these data is the inclusion of detailed locational information; specifically the data include both latitude and longitude as well as street address for each parcel. While previous studies in this area rely on publicly available data on the number and value of homes in a census block (Gebert, Calkin, and Yoder 2007; Gude, Jones, Rasker, and Greenwood 2013), this confidential dataset enables us to precisely locate homes relative to wildfire ignition points. Because census blocks can be large in rural areas and particularly when located near national forests, the standard approach using census block centroids introduces substantial noise into the estimate of distance-to-nearest parcel for each fire. In Section B.2.1 we document the improved locational precision and the data quality benefits produced by this approach.

We limit the sample to include only homes in partially vegetated areas that would be threatened by wildland fires, based on wildland-urban interface (WUI) categories identified in Radeloff et al. (2005). Specifically, we include homes located in the following vegetation categories: high density interface, high density intermix, medium density interface, medium density intermix, low density interface, low density intermix, very low density vegetated, and uninhabited vegetated³⁶. We exclude homes in areas without wildland vegetation, and specifically in areas with the following categories: high density no vegetation, medium density no vegetation, low density no vegetation, very low density no vegetation, and uninhabited no vegetation. Because the federal government controls so much land in the West, and so much residential development is in wildland areas, these sample exclusions are not particularly restrictive. Our analysis dataset includes 8,739,351 homes (about 47% of all single-family homes in the West).³⁷ We also link the parcels to the USFS Wildfire Hazard Potential (WHP) ratings to assess physical fire risk (Dillon 2015). These risk scores are designed to “depict the relative potential for wildfire that would be difficult for suppression resources to contain,” and combine data from a large-scale fire simulator with spatial

³⁵This proprietary compilation was provided by CoreLogic© through a data agreement with Stanford University.

³⁶Because the WUI data are built from Census records and our parcel data represent precise locations, occasionally a parcel is located in a so-called “uninhabited vegetated” area. Because we rely on the WUI data to identify vegetated areas, we include homes in these areas as well

³⁷This sample of 8.7 million homes used to estimate Equation (3) also includes homes near the sampling area but lying in bordering states in order to appropriately account for all nearby homes. In our main results, we report the expected protection cost only for homes in the 11 western states.

fuels and vegetation data to produce indicators of WHP. For each parcel, we assign a categorical and a continuous measure of WHP for that location as a measure of the risk faced by that parcel. We also add a measure of population density (population per square meter) from the Gridded Population of the World dataset, which reports density within roughly 1km square grid cells.

B.2.1 Comparison to Census aggregate data

Our study uses parcel-level data to assess the locations of homes threatened by wild-fire. Previous studies rely on counts of housing units at the Census block scale (Gebert, Calkin, and Yoder 2007; Gude, Jones, Rasker, and Greenwood 2013). Appendix Table VI demonstrates that high-risk regions are systematically likely to have large Census block sizes. The average Census block size for homes in the highest decile of firefighting cost is 6.6 square km, and the 95th percentile is 27.6 square kilometers. This large grid size introduces substantial noise into geographic analyses of aggregate home counts. Our study instead uses parcel-level data to assess home locations. This represents a substantial increase in granularity over existing studies.³⁸ The degree of this advantage over aggregate block-level data depends on the accuracy with which parcel locations are reported in the real estate data. The underlying records in this dataset are collected by county tax assessors, and the quality of the data varies across counties. In the following section, we describe the process by which we obtain highly accurate parcel locations for the dataset and the advantages this provides relative to using Census block centroids.

The process of generating geographic coordinates for individual structure locations is called geocoding. This section compares the default geocoding for the homes in our dataset to an alternative geocoding algorithm. We also compare our results using methods to identify homes based on publicly available data that have been used in related work (e.g. Gebert, Calkin, and Yoder 2007; Radeloff et al. 2005; Radeloff et al. 2018).

The housing data used in this project come from a compilation of tax assessor data. This dataset includes a field identifying the latitude and longitude of each home in the dataset. Overall, careful investigation of subsamples of the data imply that these coordinates are quite accurate. However, these default locations often locate multiple homes in precisely the same geographic location. To improve the accuracy of parcel locations, we implemented a secure, locally-hosted geocoding algorithm on a local server to calculate coordinates for each home. We used a locally hosted instance of

³⁸A separate advantage of parcel-level data over Census data is that we know the year in which a home was constructed, and thus whether the home was present at the time of each fire in the dataset. Census data report static housing counts every 10 years.

the Nominatim geocoder³⁹ to geocode homes in our dataset based on the address field, while maintaining data confidentiality and security.

Overall, the geographic coordinates generated by Nominatim align closely with the default locations in the homes data. The median distance between reported locations is 41 meters. For most homes, we believe that the Nominatim locations represent small shifts that slightly improve location accuracy. The exception is for addresses that include typographical errors. In this case, Nominatim may return locations that are not meaningful – for example, that may be hundreds of kilometers outside of the county containing the home.⁴⁰ To eliminate these errors, we backstop the Nominatim locations with the default locations in the original dataset (which tend to be more accurate but less precise) using the following rule: if the Nominatim location is A) more than 1km outside of the county given in the tax assessor data, B) differs from the tax assessor location by more than 5 km, or C) was not obtained using the street address (e.g., was geolocated by the Nominatim algorithm based only on city and state), we use the tax assessor location instead. Using this backstop method, we re-code 89% of the addresses in our full dataset using Nominatim, and the remainder with the default locations in the original dataset.

Previous studies of wildland-urban interface issues have used publicly-available Census data to identify approximate home locations. The decennial Census includes counts of population and housing units at the Census block level. Forestry studies frequently use these block-level aggregate data to locate homes (e.g., by average population over the area of the Census block, or assigning population to the centroid).⁴¹ One challenge with using aggregate Census data is that Census blocks in areas with high fire risk tend to be many square kilometers or more, reducing the accuracy of the approach. Table VI shows this. On the other hand, Census block-based approaches do not rely on the accuracy of address-based geocoding.

The figures and tables in this section explore the robustness of our results to three possible methods to locating homes: our geolocation method, a method that follows previous work in using Census block centroids for homes' locations, and a method using the Census-based list of places (which include both incorporated and unincorporated communities). Figure V reproduces the regression from Figure 3 in the main text. The results are not qualitatively sensitive to the choice of location method. However, both of the census-based approaches identify few fires with homes more than 40 km away and the corresponding standard errors for the estimate of the effect of home nearness on fire suppression cost are noisier. In our view, both of these facts

³⁹Nominatim uses Open Street Map data to conduct forward and reverse geocoding and is available at <https://github.com/openstreetmap/Nominatim>.

⁴⁰The County field in the underlying dataset is likely to be particularly reliable, since the dataset is assembled from individual county tax records.

⁴¹Martinuzzi et al. (2015) describes one approach in detail, including how raw Census blocks are processed to remove portions that overlap public land and other steps.

ONLINE APPENDIX

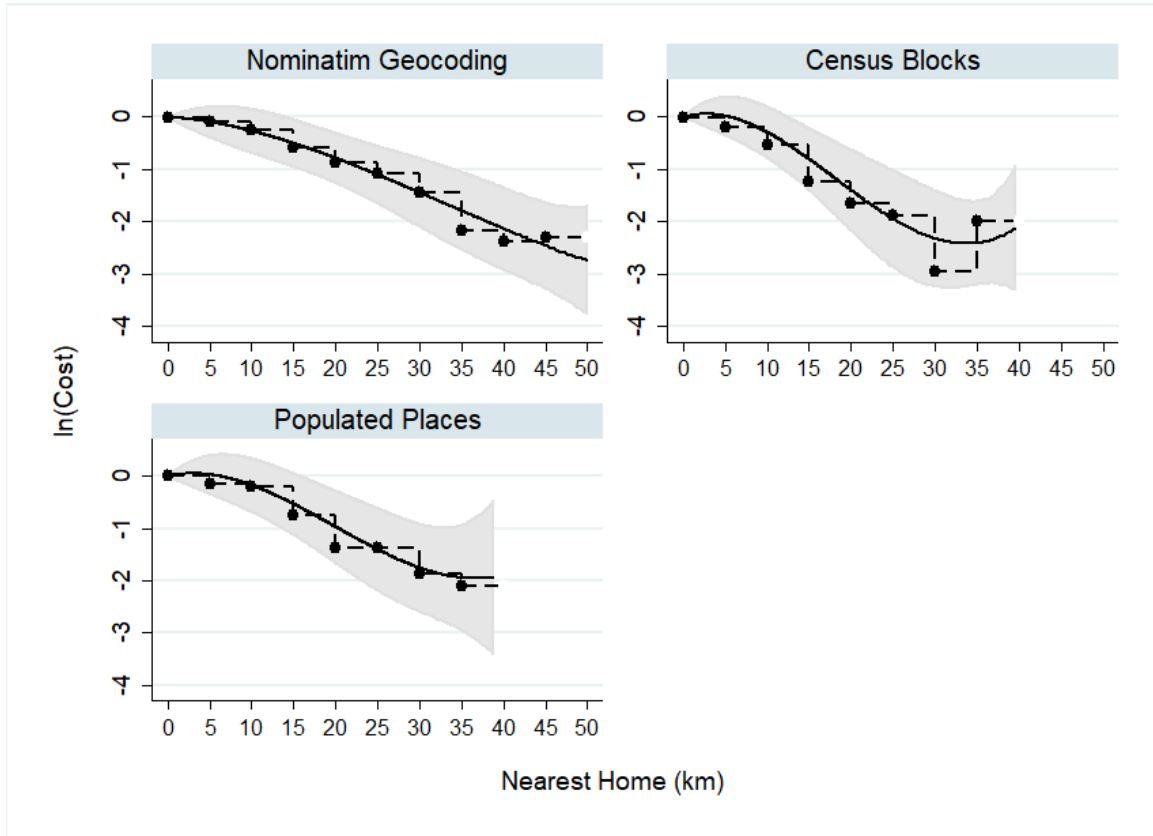
reflect that the census-based approaches systematically underestimate (on average) the distance to nearest home for fires in remote areas for the reasons we describe above.

Appendix Table VI: The Advantage of Parcel-level Data: Census Blocks in High-Cost Areas are Large

	Area in km ²	
	All Populated Census Blocks	Highest Decile of Firefighting Cost
Mean	1.2	6.6
p90	0.9	13.8
p95	3.0	27.6
p99	22.8	95.6
N	415,636.0	41,585.0

Notes: This table shows the distribution of areas for Census blocks, in square kilometers. Column (1) includes all 2010 Census blocks with greater than zero housing units. Column (2) includes the 10% subset with the highest average expected protection costs as identified in our study. While Census blocks tend to be small overall, the areas of greater interest for understanding firefighting costs are systematically larger. Data on Census block areas, housing counts, and locations are from the U.S. Census Bureau.

Appendix Figure V: Cost by distance to nearest home



Notes: Each panel estimates the impact of nearest home distance, as measured using three different methods of locating homes, on log suppression cost. “Nominatim Geocoding” uses the geocoding and backstop method described in paper. “Census Blocks” uses Census block centroids. “Populated Places” uses the location information given in the Census Populated Places dataset. Each regression includes national forest fixed effects, state by month-of-year fixed effects, and state by year fixed effects. Standard errors are clustered by national forest.

B.3 Calculation of the additional fire cost due to homes

Δ_i is a per-fire estimate of fire suppression costs that occur as a result of home presence, or the “additional fire costs”. The estimate of Δ_i that we use follows from the estimates from the binned model in Section 5.1.

Specifically, let \hat{p}_d be our estimate of the proportional change in costs due to the nearest home being located d kilometers away relative to the nearest home being located 40+ kilometers away (the distance above which firefighting costs no longer decrease in our step function and linear spline estimates). Using the binned statistical model in Section 5.1, we compute \hat{p}_d applying the transformation described in Footnote 14 to the coefficient for the bin that contains d .

Then, letting F_i be the observed fire cost and C_i be the counterfactual cost (the cost of the fire had it occurred more than 40 kilometers away), note that the relationship between two can be written as $F_i = C_i(1 + \hat{p}_d)$. The additional fire cost is $\Delta_i = F_i - C_i$. Substitute and rearrange to obtain the estimate for Δ_i in terms of F_i and \hat{p}_d :

$$\Delta_i = F_i \frac{\hat{p}_d}{1 + \hat{p}_d}$$

C Comparison to Forest Service Accounting Data

Our main analysis makes use of publicly available data on suppression expenditures for U.S. Forest Service Fires. However, Gebert, Calkin, and Yoder (2007) write that the publicly available data on costs are less accurate than official expenditure data recorded in the USFS accounting system. Since the time of their writing, the addition of an accounting code (known as a “P-code”) to the FAMWEB data has made this match somewhat more straightforward.

To check whether the results of our empirical exercise in section 5.1 are altered by the use of the more accurate accounting data, we submitted a Freedom of Information Act Request to the U.S. Forest Service for the accounting dataset. The dataset we obtained as a result of this processing includes suppression expenditures from 2003-2013 with a limited set of fields. Specifically, it includes the P-code, the amount of suppression expenditures for that code, and the year that those expenditures were billed. The following table summarizes yearly cost for 2004-2012 (2003 and 2013 are partially missing in the accounting dataset) for the FAMWEB data and the accounting dataset we obtain.

Appendix Table VII: Annual costs by suppression cost dataset

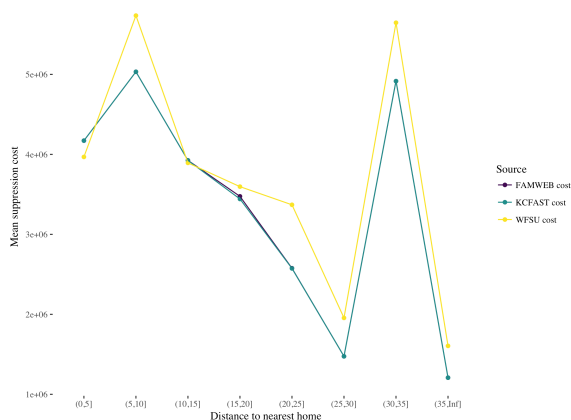
Year	FAMWEB	FAMWEB West	WFSU valid	WFSU all
2004	247	236	471	679
2005	271	262	440	768
2006	828	799	1,142	1,355
2007	978	923	977	1,263
2008	708	694	1,070	1,464
2009	401	394	682	840
2010	239	224	373	662
2011	475	436	623	1,251
2012	975	952	917	1,161
Total	5,122	4,920	6,695	9,442

Notes: All values in millions of dollars. First column includes all incidents in FAMWEB, second column includes only incidents in regions 01-06, third column includes only WFSU incidents with P-codes used for wildfire suppression-related costs. Specifically, the incident code begins with P*, where * is a number for the USFS region, and is followed by a 4 character alphanumeric code beginning with a letter, per USFS specification.

Next, we match the costs in the accounting dataset to the FAMWEB data using the P-code to identify whether the relationship between suppression costs and distance

ONLINE APPENDIX

Appendix Figure VI: Comparison of FAMWEB and accounting data: mean suppression costs and distance to nearest home



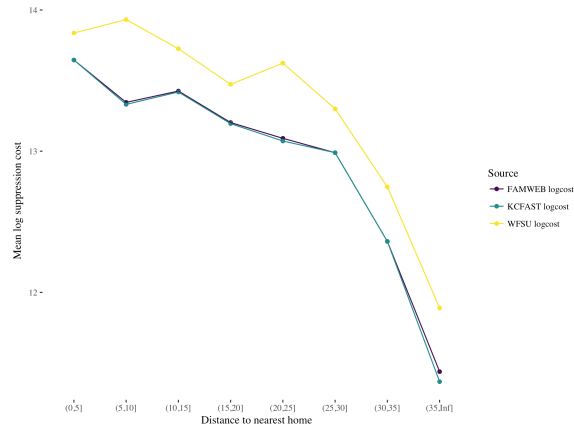
from homes is stable across the use of either source of cost data. We match from the P-code and year to the suppression expenditure data from FAMWEB. This match is not entirely straightforward: the guidelines over the issuance of P-codes and the proper accounting procedures have changed over the years, and many fires are submitted under the same P-code. In particular, large complex fires are often accounted for using the same P-code.⁴² For the 997 fires in our FAMWEB dataset from 2004-2012, we are able to match 799 of these to the accounting dataset.

We estimate the relationship between fire cost and nearby homes for four sets of costs: A) FAMWEB costs for all fires in FAMWEB, B) FAMWEB costs for all 2004-2012 fires in FAMWEB, C) FAMWEB costs for fires that match to the accounting data, and D) accounting data costs for all fires that match to FAMWEB data. Figures VI, VII, VIII, and IX plot binned averages and sums of costs for each dataset on distance from nearest home and on number of homes within 30km. Although the sums differ due to the difference in the number of fires included for each set of data, the means have similar patterns. Our conclusions about the usefulness of the FAMWEB data are similar to those of Schuster, Cleaves, and Bell (1997), who wrote at the time that, “One of the purposes for our analysis of per-acre fire expenditures was to assess the quality of suppression expenditure estimates contained in the NIFMID database. These estimates are widely regarded as unreliable. However, the correlation between uncorrected, NIFMID-based expenditures and those from the accounting system is 0.85, a surprisingly high level.”

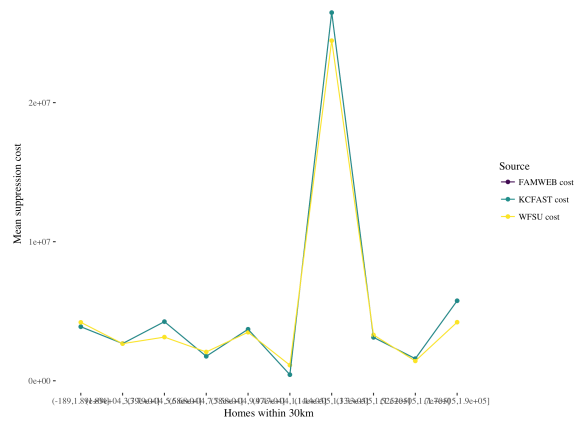
⁴²So-called “ABCD” fires, which are small, are also accounted for using a single P-code for each forest-year, but for our purposes this is not an issue since our focus is on incidents with more than 300 burned acres.

ONLINE APPENDIX

Appendix Figure VII: Comparison of FAMWEB and accounting data: mean log suppression costs and distance to nearest home

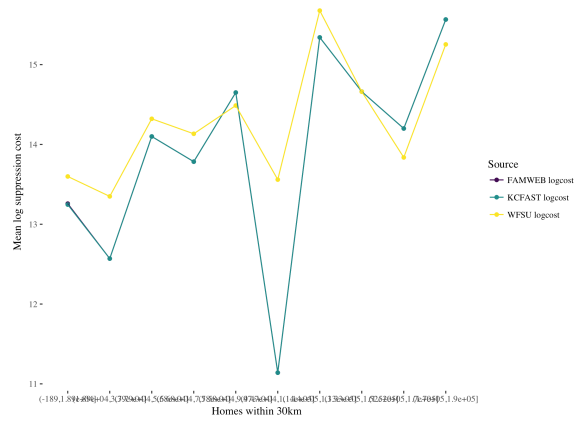


Appendix Figure VIII: Comparison of FAMWEB and accounting data: mean suppression costs and number of homes in 30km



ONLINE APPENDIX

Appendix Figure IX: Comparison of FAMWEB and accounting data: mean log suppression costs and number of homes in 30km



References

- Angrist, Joshua, and Jorn-Steffen Pischke. 2009. *Mostly Harmless Econometrics: An Empiricist's Companion*. 1st edition. Princeton University Press.
- Dillon, Gregory K. 2015. *Wildfire Hazard Potential (WHP) for the coterminous United States (270-m GRID), version 2014 classified*. Forest Service Research Data Archive.
- Gebert, Krista M, David E Calkin, and Jonathan Yoder. 2007. "Estimating suppression expenditures for individual large wildland fires". *Western Journal of Applied Forestry* 22 (3): 188–196.
- Gude, Patricia H., Kingsford Jones, Ray Rasker, and Mark C. Greenwood. 2013. "Evidence for the effect of homes on wildfire suppression costs". *International Journal of Wildland Fire* 22.
- Martinuzzi, Sebastin, Susan Stewart, David Helmers, Miranda Mockrin, Roger Hammer, and Volker Radeloff. 2015. *The 2010 Wildland-Urban Interface of the Conterminous United States*. Research Map NRS-8. Newtown Square, PA: U.S. Department of Agriculture, Forest Service, Northern Research Station.
- Radeloff, Volker C, Roger B Hammer, Susan I Stewart, Jeremy S Fried, Sherry S Holcomb, and Jason F McKeefry. 2005. "The wildland–urban interface in the United States". *Ecological applications* 15 (3): 799–805.
- Radeloff, Volker C, et al. 2018. "Rapid growth of the US wildland-urban interface raises wildfire risk". *Proc. Natl. Acad. Sci. U. S. A.* 115, number 13 (): 3314–3319.
- Schuster, Ervin, David Cleaves, and Enoch Bell. 1997. *Analysis of USDA Forest Service Fire-Related Expenditures 1970/1995*. Research Paper PSW-RP-230. USDA Forest Service Pacific Southwest Research Station.
- USDA Office of Inspector General. 2006. *Forest Service Large Fire Suppression Costs*. Audit Report 08601-44-SF.