

ARCHAEOLOGY SIGNS in ASL

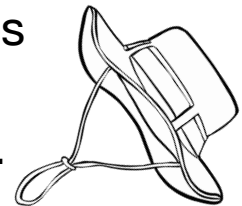
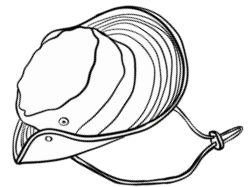


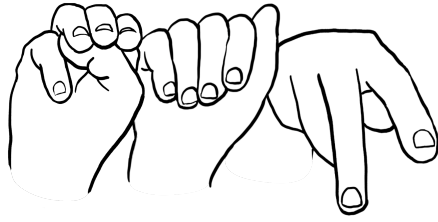
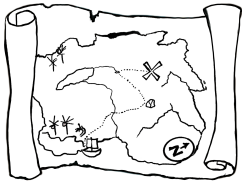
An **archaeologist** is someone whose job is learning about people who lived a long, long time ago. Archaeologists find things that the people left behind, and study them to learn what the people were like.

Archaeologists go on long walks to find the things we are looking for. We wear strong **boots** to protect our feet.



Sometimes it is sunny or rainy outside where we are working. We need **hats** to protect our eyes from the sun and to keep the rain off our faces.

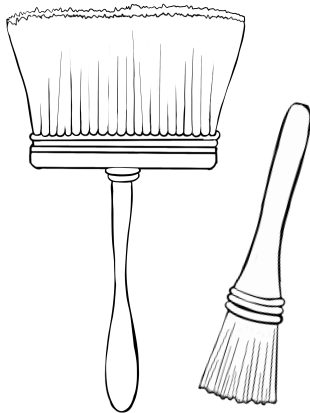
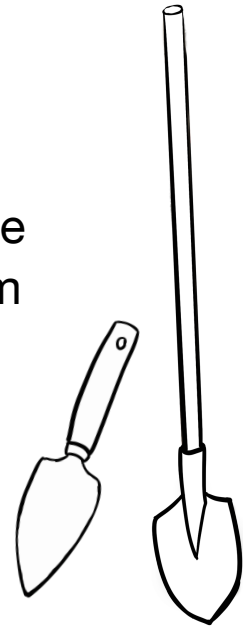




Archaeologists use **maps** to tell us where to go! A map is a special picture that shows where things are and how to get from one place to another.



Sometimes the things people left behind are buried in the dirt. We use our **shovels** to dig them up! We use big shovels to make big holes, and little shovels when we need to be careful.



Things that have been buried in the dirt can be dirty! We use **brushes** to brush the dirt off the things we find. Now we can see them clearly to study them more!

