

Beetles

Labeling Word

Bank

abdomen

thorax

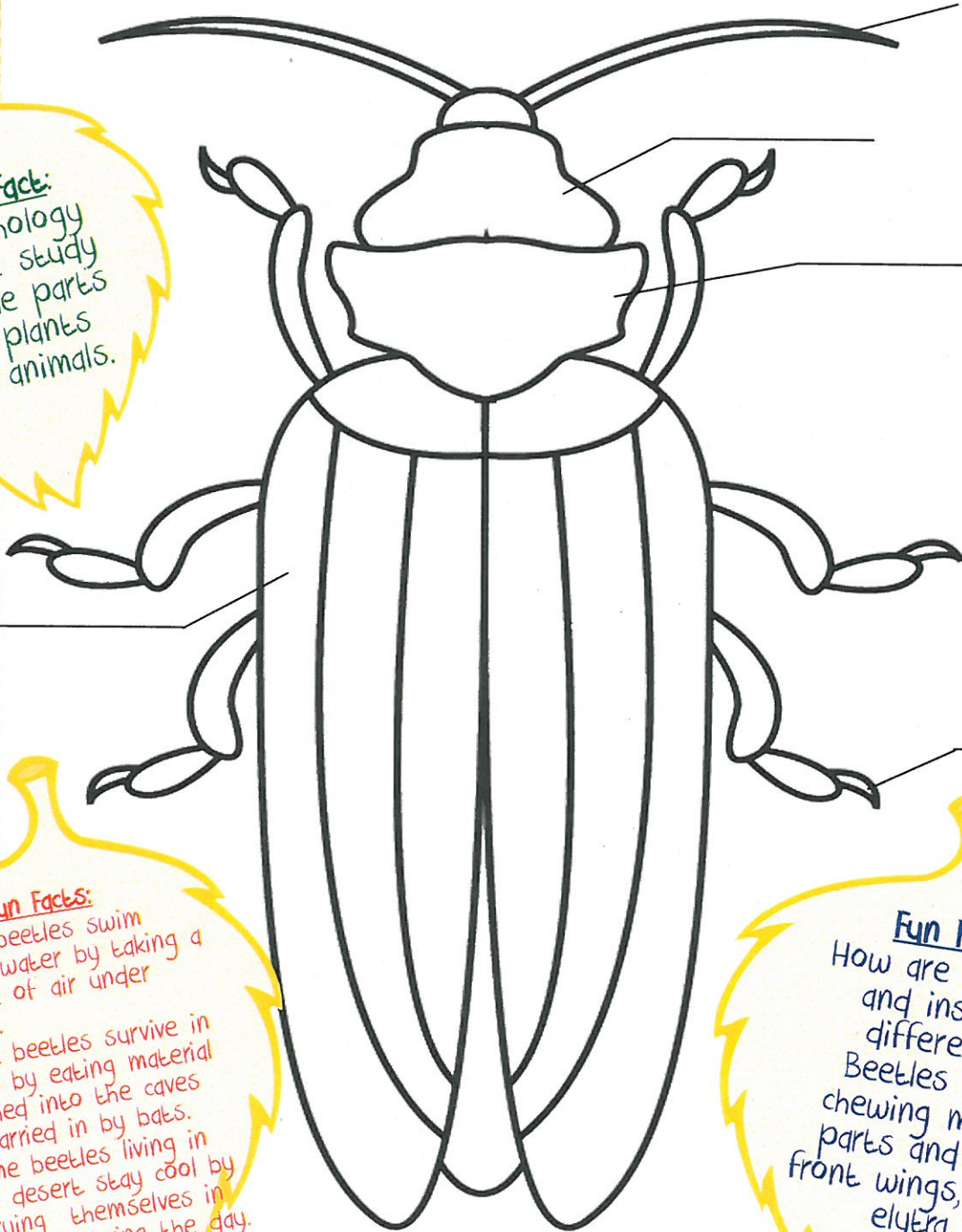
claw

head

antenna

Did you know there are more types of beetles than any other living thing on Earth? Even though there are numerous, unique beetle species, each beetle follows the same basic plan. Every beetle has a head, thorax, and abdomen. Find the beetle display stand labeled morphology. Use it to help you label and color the beetle below. Then read the fun facts to learn more about beetles!

Fun Fact:
Morphology is the study of the parts of plants and animals.



Fun Facts:

1. Some beetles swim under water by taking a bubble of air under water.
2. Some beetles survive in caves by eating material washed into the caves or carried in by bats.
3. Some beetles living in the desert stay cool by burying themselves in the sand during the day.

Fun Fact:
How are beetles and insects different? Beetles have chewing mouth parts and hard front wings, called elytra.