

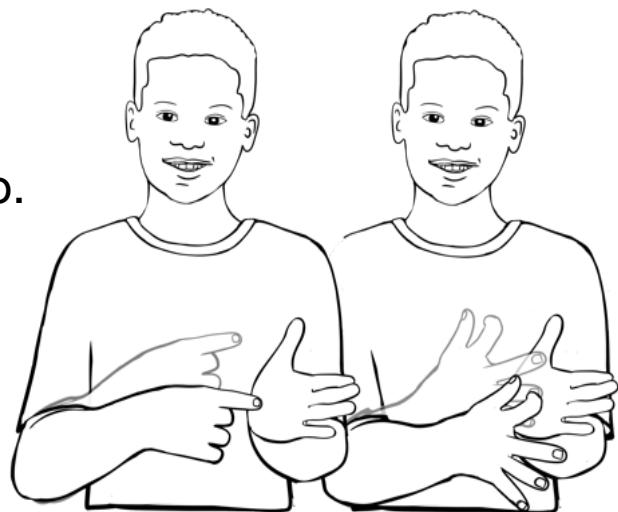
# Archaeology

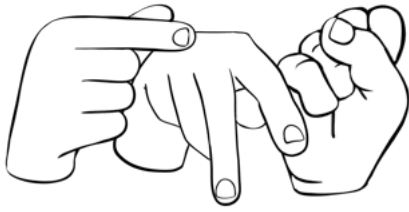
## Words & signs



An **archaeologist** is a scientist whose job is learning about people who lived a long, long time ago. Archaeologists find things that the people left behind, and study them to learn what the people were like.

Archaeologists study artifacts. An **artifact** is something that a human left behind a long, long time ago. Some artifacts are big, like buildings or roads. Some artifacts are tiny, like beads or coins. Many artifacts are buried in the dirt.





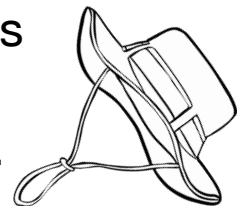
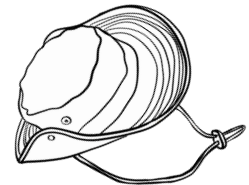
Archaeologists use **GPS** to tell us where to go! A GPS is a device, or a program on a device, that keeps track of where things are.



Archaeologists go on long walks to find the things we are looking for. We wear strong **boots** to protect our feet.

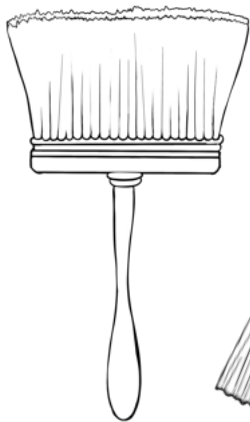
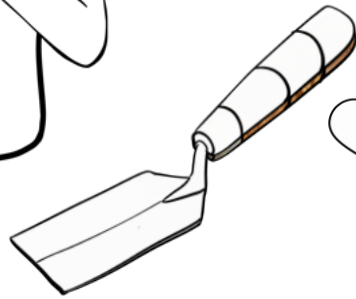


Sometimes it is sunny or rainy outside where we are working. We need **hats** to protect our eyes from the sun and to keep the rain off our faces.





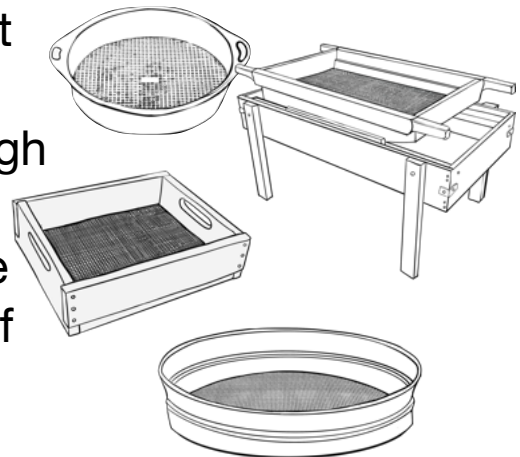
Sometimes the things people left behind are buried in the dirt. We use our **trowels** to **dig** them up!



Things that have been buried in the dirt can be dirty! We use **brushes** to brush the dirt off the things we find. Now we can see them clearly to study them more!



If an artifact is very small, it might be hard to find. We use a **screen** to sift through the dirt. The dirt falls through the holes in the screen so we can see if there are any tiny artifacts like beads.

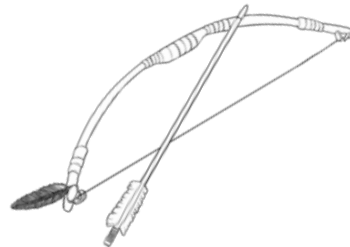
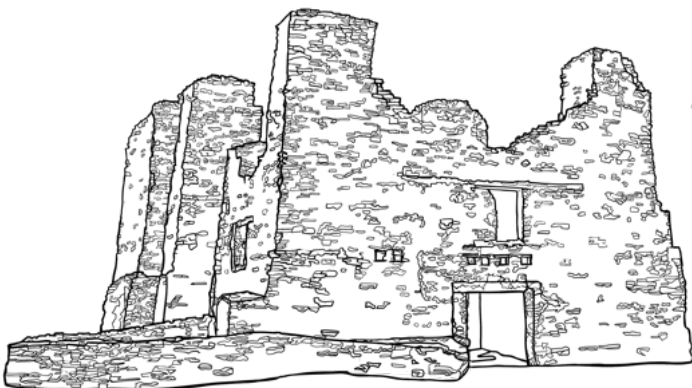




Archaeologists **search** for artifacts out in the field. We look in places where other archaeologists found things, and we look nearby. When we **find** an artifact, we study it to learn about people who lived long ago.



Archaeologists use **cameras** to **take pictures** of artifacts when we find them. We can show the pictures to other archaeologists, and use the pictures to help us remember what things look like before they are cleaned up.

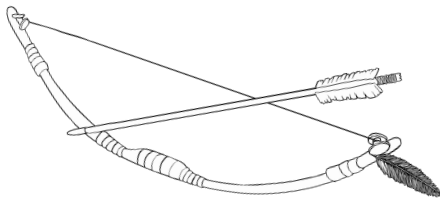
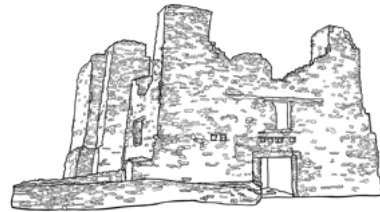


# WHAT WAS IT?

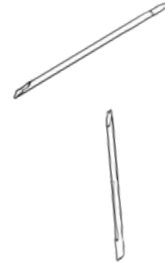
Sometimes when things are left alone for a long time, they break or fall apart. When archaeologists find a piece of something, we look around for other parts and try to figure out what it was before it broke.



The building was empty for a long time, and it fell apart.



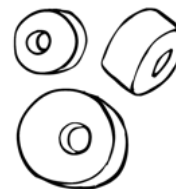
The arrow broke and got separated from the bow.



The pottery broke and only a shard is left.



A few small beads are all that is left of a necklace.





You can be an archaeologist! Look at the parts of things on the left side of the page. What do you think it used to be? Draw lines to match each broken part to the whole object it came from.

