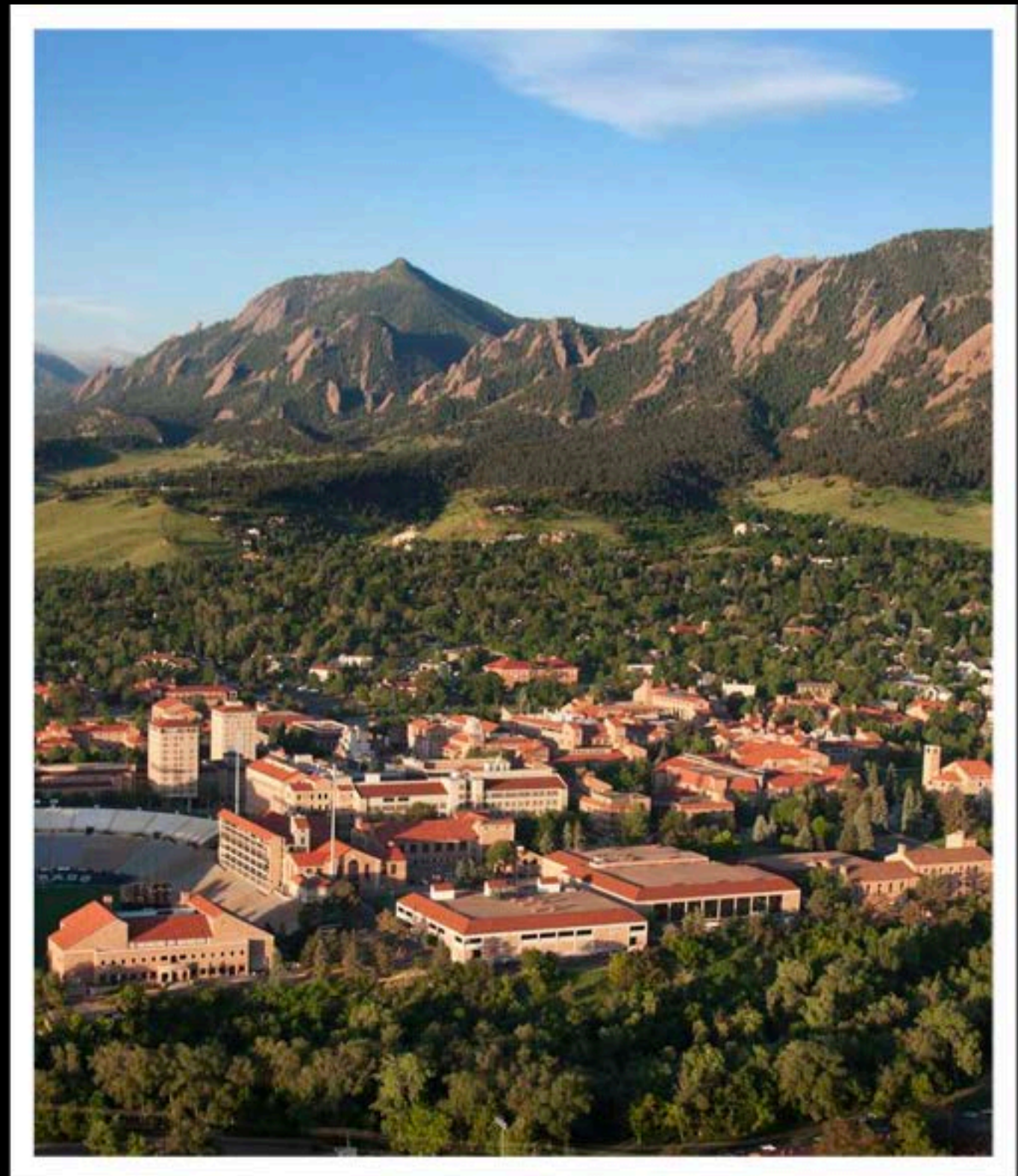


Environmental Health and Safety

Groups

- Hazardous Materials
- Radiation Safety
- Biosafety
- Asbestos/Lead & IAQ
- Chemical safety
- Environmental Compliance/ Industrial Hygiene

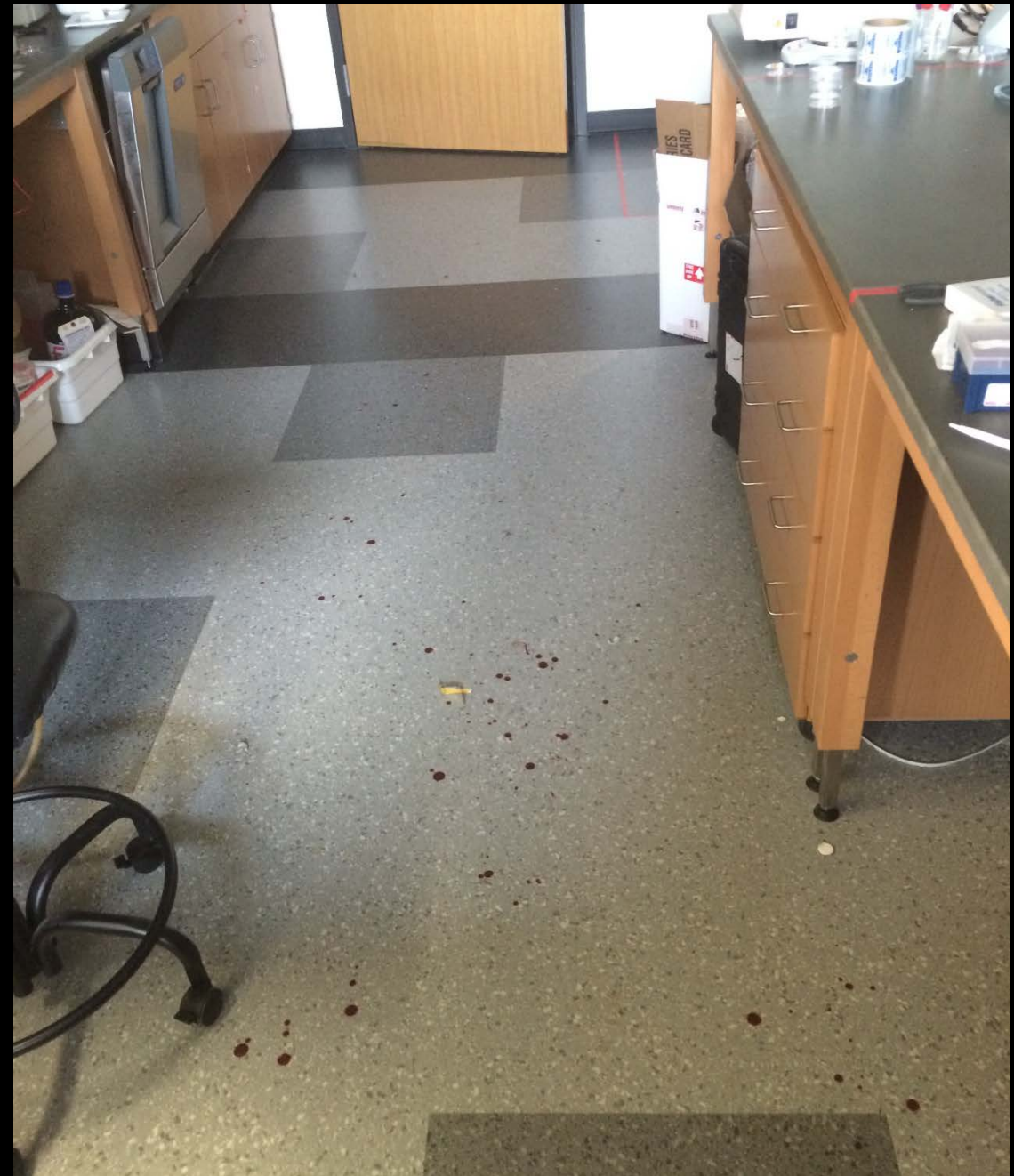


Biosafety

- Coordinate with research and federal agencies for all research using biohazardous materials or animals
- Protocol review and research committees
- Conduct occupational health audits of all animal facilities and research involving biological materials
- Biohazardous spill events



Lab Accident
Yes, that's blood





Clean up

Chemical Safety


- Conduct annual audits of all campus research facilities to ensure compliance with EPA and CDPHE
- Oversight of Dept. of Homeland Security program
- Assist labs with proper SOP's regarding chemical use and high hazard material
- Training
- Fumehoods, safety showers, eyewashes, etc.



What do we have in labs on campus?

- Just about everything
- And a bunch of stuff you've never heard of
- Fortunately, small quantity



A photograph of a wooden crate, likely made of plywood or thin wooden planks, with handwritten text in black ink. The text is arranged in three lines: "DO NOT OPEN!", "ACK OF", and "COVENANT". A small, rectangular label with some illegible text is visible on the upper right side of the crate. The crate is positioned in a room with a white ceiling and walls, and a wooden surface is visible in the foreground.

DO NOT OPEN!

ACK OF

COVENANT



Espionage?

Really bad fume hood explosion



Or just slob...?

One of the many things we inspect



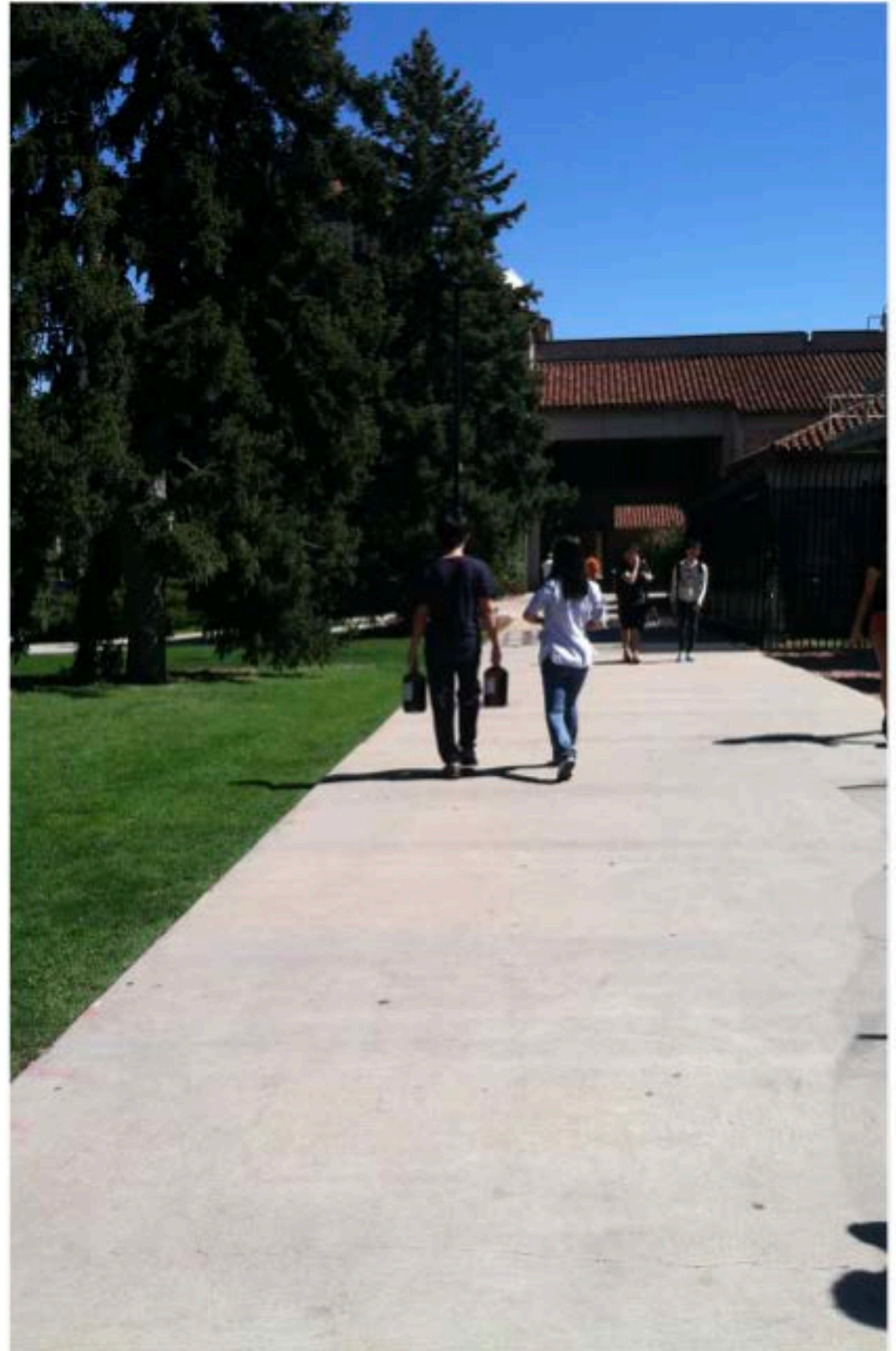
Slobs.

Not naming any names!



What is this?

Totally
Appropriate!

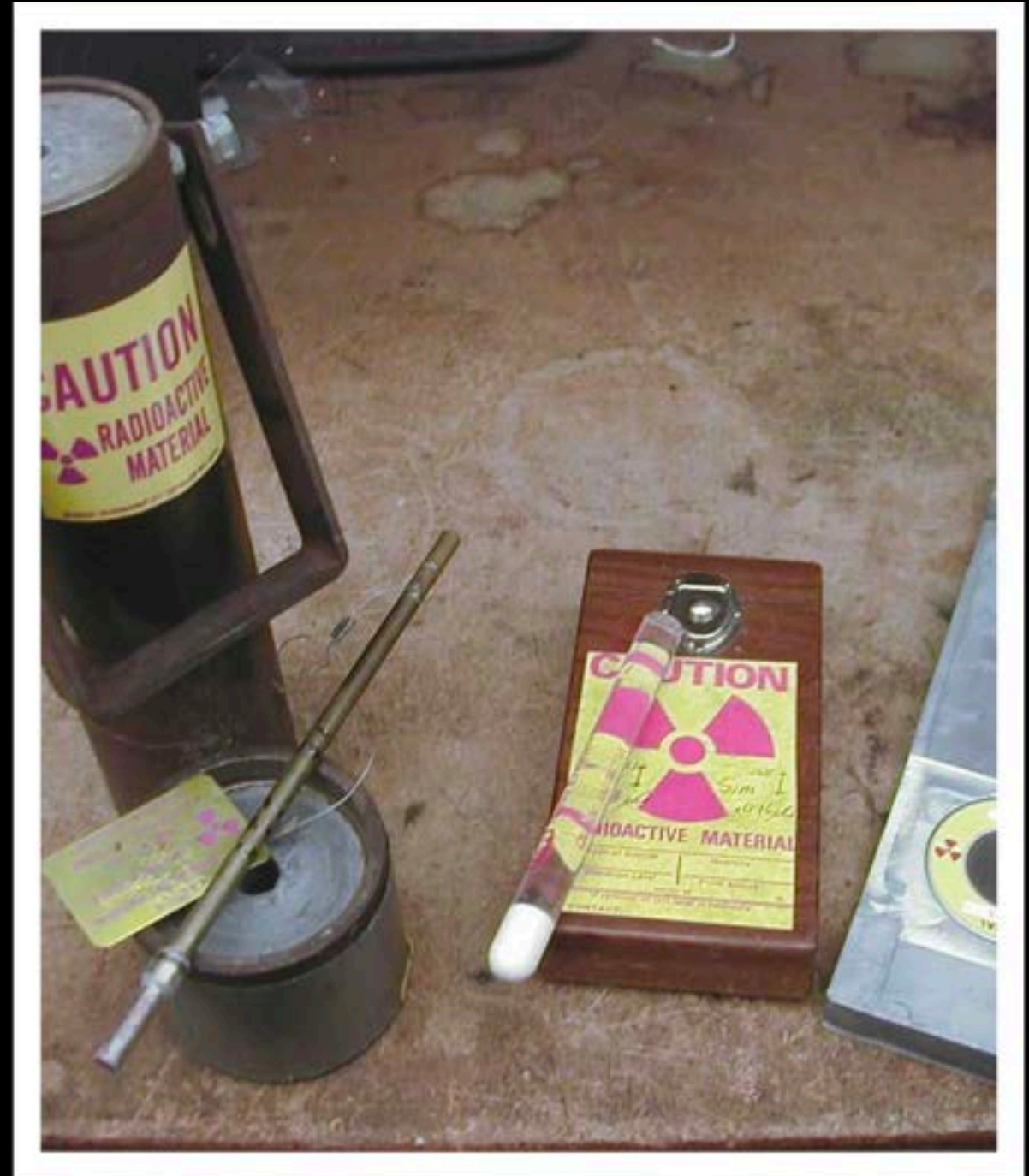


Solvents get
heavy!



Radiation Safety

- Maintain all licensing with the NRC
- Receive all radioactive material for testing and distribution
- Management and approval of all research activities with various committees
- Pick up and management of all radioactive waste material
- Spill response





Irradiator removal



Asbestos/Lead & IAQ

- Work with all groups and projects on campus to ensure safe impact of ACM.
- Work with various contractors to ensure IAQ issues are handled appropriately
- Cherries Flambe gone awry







Contractors

We have to watch them too!



I hope that doesn't fall



Indoor Air Quality

Bookstore flood, mold is a huge issue.

Environmental Compliance/ Industrial Hygiene

- Campus Water Quality
- Building Issues
- Exposure assessments
- Hazardous exhaust
- SPCC
- Event Approval
- Emergency Response
- Coordination with outside agencies (LEPC, Boulder County, Boulder fire etc...)





Emergency Response

Hmmmmmm



Events on campus

Water quality, food safety, hazardous materials, noise, PPE, egress, temporary structures, gas cylinders, etc.



Environmental Compliance



Homeless camps



Hazardous Materials

- Classify, manifest, transport and manage 150,000 pounds of materials per year
- Respond to business hour spills
- Waste treatment of 2500 gallons year





Treatment Storage Disposal Facility
(TSDF)

Bomb Squad





Occupational Safety



Please, just no.





Environmental Health & Safety (EH&S)

303-492-6025

ehs@Colorado.edu