

ARMORY COPIER ADD INSTRUCTIONS FOR PC

- First visit <https://www.btapac.konicaminolta.com/drivers/index.html>
- Search drivers for a "bizhub C458"
- Hit Go and select your Operating System version (Windows 10)
- Select the PCL 6 Driver and Download

Search Drivers, Apps and Manuals

Search your product:

bizhub C458

Or make choice step by step:

Office Colour A3 bizhub C458

GO

Driver Utilities User's Guide

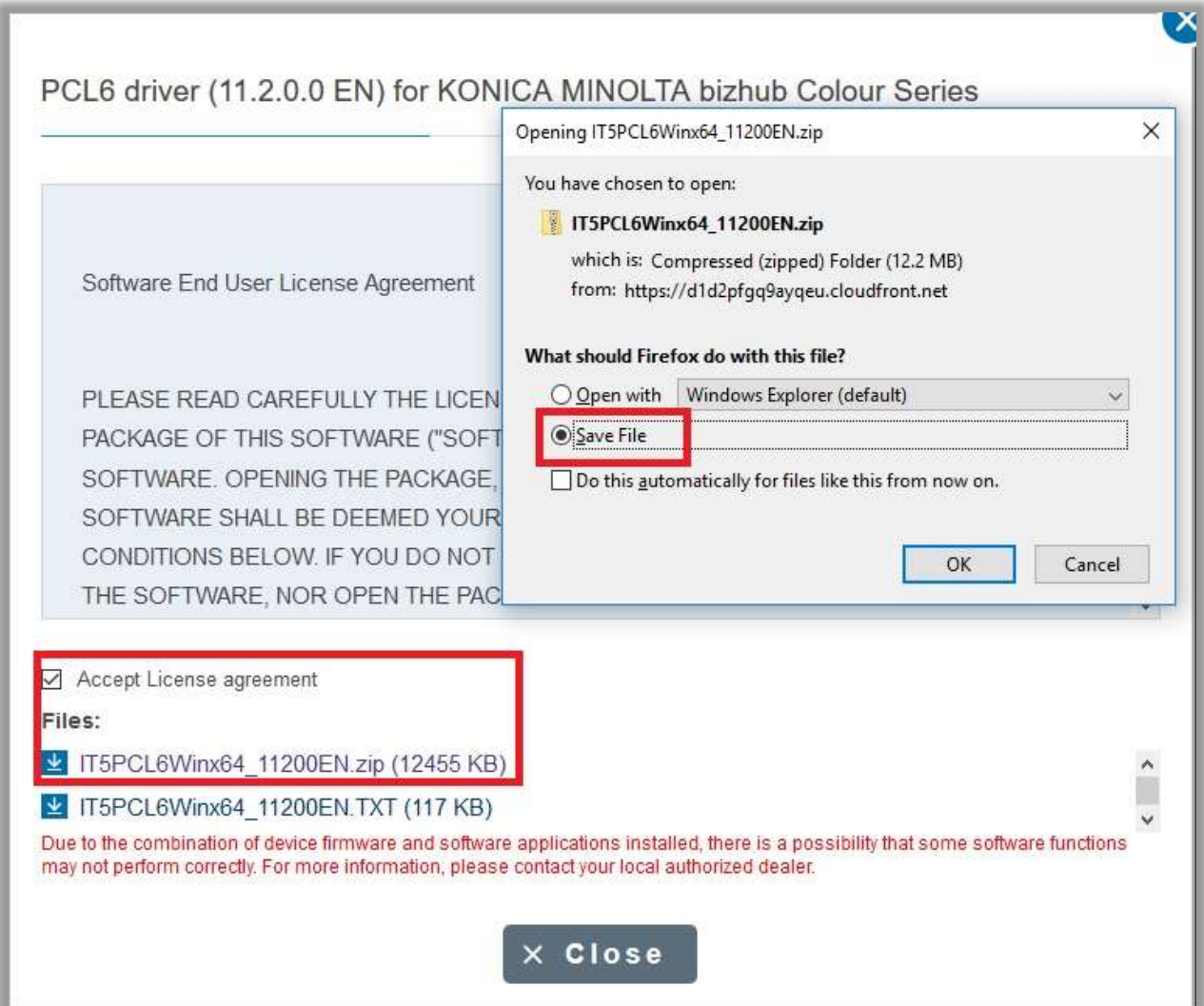
English Windows 10 (64bit)

Open all categories

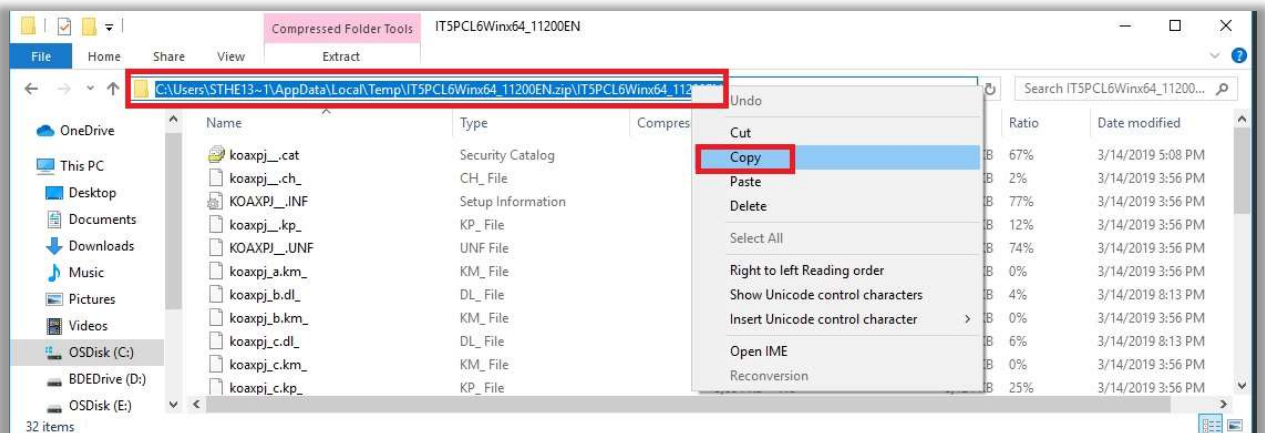
Printer Driver

Emulation	Release Date	Version	Description	Download
PC-Fax	2019-05-27	11.2.0.0	More +	Download
PostScript	2019-05-27	11.2.0.0	More +	Download
PCL6	2019-05-27	11.2.0.0	More +	Download
PostScript	2018-07-26	11.1.1.0	More +	Download
PCL6	2018-07-26	11.1.2.0	More +	Download

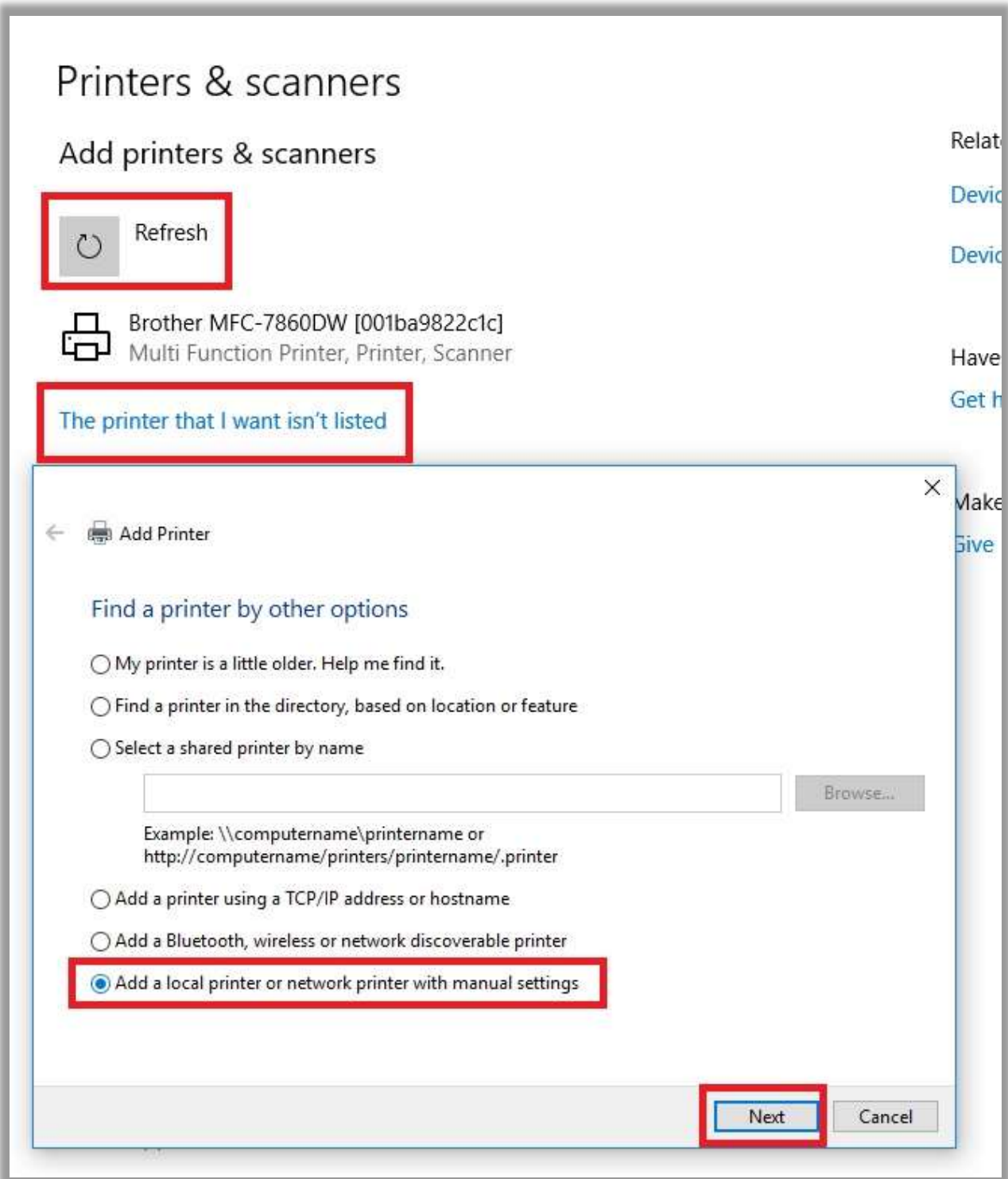
- Save the downloaded ZIP file (usually found in your Downloads folder)



- In your Downloads folder, locate and copy the location of the Opened ZIP file.



- Now do a Cortana search (or locate the Control Panel) for **Printers and Scanners** and go to that System Setting.
- Select the 'Printer that I want wasn't listed' option
- Now Select 'Add a local printer or network printer with manual settings'



- Select 'Create a new port'
- Select 'Standard TCP/IP Port'

The screenshot shows the 'Add Printer' wizard in Windows. The title bar says 'Add Printer' with a back arrow and a close button. The main heading is 'Choose a printer port'. Below it, a descriptive text says: 'A printer port is a type of connection that allows your computer to exchange information with a printer.' There are two radio button options: 'Use an existing port:' and 'Create a new port:'. The 'Create a new port:' option is selected and highlighted with a red rectangle. Below this, the text 'Type of port:' is followed by a dropdown menu. The dropdown menu is open, showing three options: 'Standard TCP/IP Port' (highlighted with a blue background and a red rectangle), 'Local Port', and 'Standard TCP/IP Port' (highlighted with a blue background and a red rectangle). At the bottom right, there are two buttons: 'Next' (highlighted with a red rectangle) and 'Cancel'.

← Add Printer

Choose a printer port

A printer port is a type of connection that allows your computer to exchange information with a printer.

☐ Use an existing port: LPT1: (Printer Port)

☒ Create a new port:

Type of port:

- Standard TCP/IP Port
- Local Port
- Standard TCP/IP Port

Next Cancel

- For the printer IP address, give it 128.138.144.34

← Add Printer

Type a printer hostname or IP address

Device type: TCP/IP Device

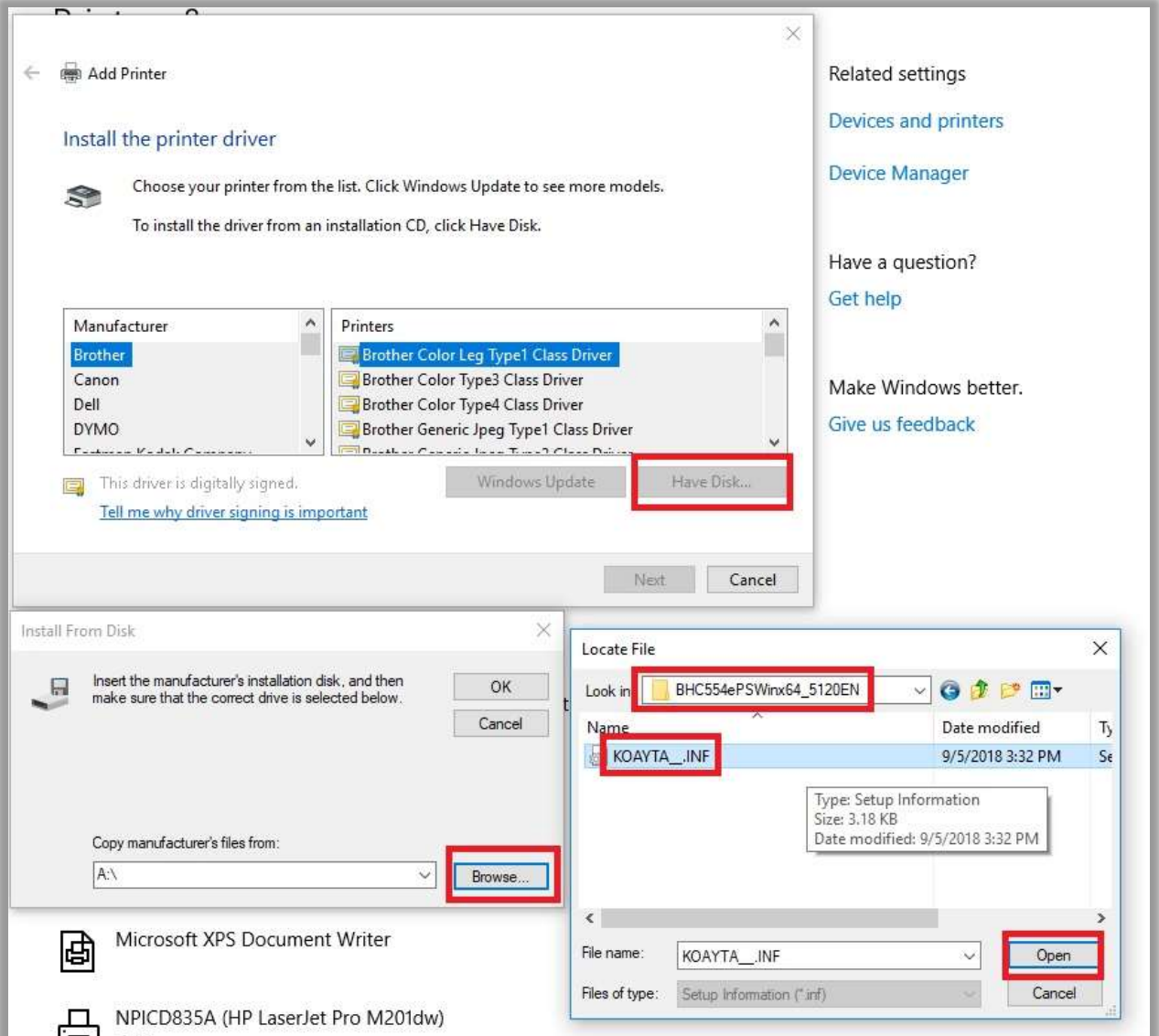
Hostname or IP address: 128.138.144.34

Port name: 128.138.144.34_1

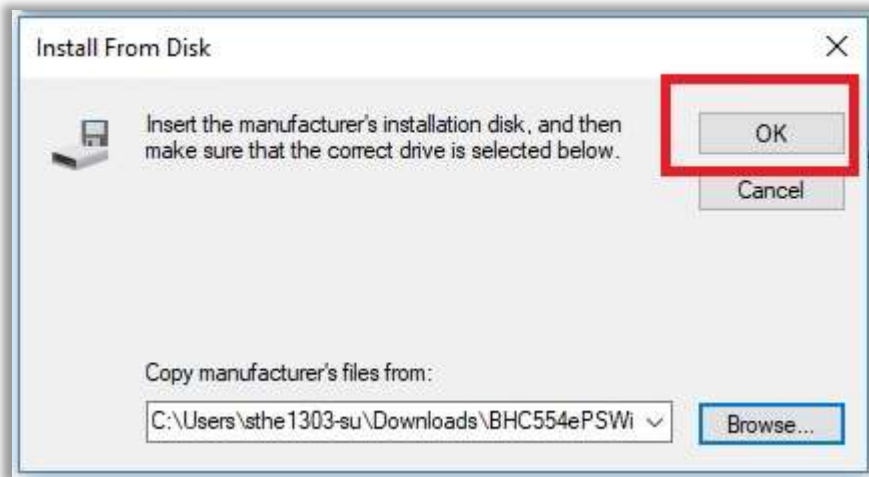
☒ Query the printer and automatically select the driver to use

Next Cancel

- When queried for the driver, click Have Disk
- Then Browse to the Download folder where you downloaded the Konica Minolta ZIP file



- Locate the driver in that folder and hit OK.



- Then click Next three times until you reach the Successfully Added window

