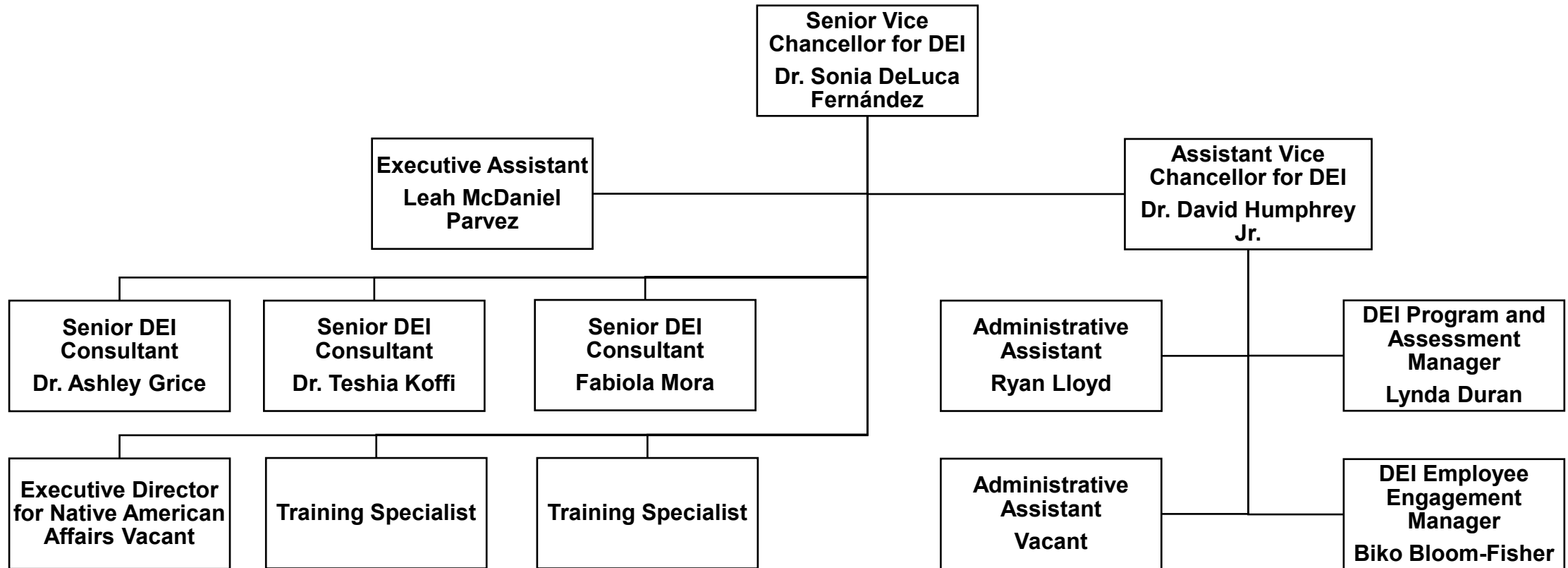


Office of the Senior Vice Chancellor for Diversity, Equity, and Inclusion - Org Chart



Office of the Senior Vice Chancellor for Diversity, Equity, and Inclusion - Org List

- Senior Vice Chancellor for DEI, Dr. Sonia DeLuca Fernández, Reports to the Chancellor
 - Executive Assistant, Leah McDaniel Parvez, Reports to the Senior Vice Chancellor
 - Senior DEI Consultant, Dr. Ashley Grice, Reports to the Senior Vice Chancellor
 - Senior DEI Consultant, Dr. Teshia Koffi, Reports to the Senior Vice Chancellor
 - Senior DEI Consultant, Fabiola Mora, Reports to the Senior Vice Chancellor
 - Executive Director for Native American Affairs, Vacant, Reports to the Senior Vice Chancellor
 - Training Specialist, Reports to the Senior Vice Chancellor
 - Training Specialist, Reports to the Senior Vice Chancellor
 - Assistant Vice Chancellor for DEI, Dr. David Humphrey Jr., Reports to the Senior Vice Chancellor
 - Administrative Assistant, Ryan Lloyd, Reports to the Assistant Vice Chancellor
 - Administrative Assistant, Vacant, Reports to the Assistant Vice Chancellor
 - DEI Program and Assessment Manager, Lynda Duran, Reports to the Assistant Vice Chancellor
 - DEI Employee Engagement Manager, Biko Bloom-Fisher, Reports to the Assistant Vice Chancellor

