



R I B R O C K P L A Z A



**UNIVERSITY OF COLORADO, BOULDER**  
**DEPARTMENT OF ENVIRONMENTAL DESIGN**

**CLIENT: LONGMONT DOWNTOWN DEVELOPMENT ASSOCIATION**

SENIOR LANDSCAPE ARCHITECTURE CAPSTONE STUDIO - SPRING 2020

INSTRUCTION: JESSE VAN HORNE

Introduces the redesign of Longmont's St. Stephens Plaza into Rib Rock Plaza, designed by:

Stephen Cannon.....stephencannon18@gmail.com

Tori Civitello.....tacivitello@gmail.com

Ayushi Patel.....ayupatel1996@gmail.com

Ian Fuller.....ianthebean2@gmail.com

# RIB ROCK PLAZA

DESIGNED SITE NARRATIVE

Sitting at the intersection of the vast Great Plains and the roaring front range uplift, **Longmont is a transitional area ingrained in its environment.** Longs Peak looms over the town to the west, from the gentle knolls of Longmont to the rugged disarray of the Colorado Rockies.

The geology of this uplift exhibits a distinct stratification found all along the entire Front Range. These strata fall into four general layers. Starting with the **dark shale found in the Denver Basin's Pierre Formation** (eastern edge of hogbacks, Table Mesa), transitioning into uplift that then **exposes the white, chalk, limestone sediments.** Below that is the dark red, conglomerate outcrops which compose **Colorado's sandstone including the Fountain, Lyons, Morrison and Dakota Formations.** Below all of that are the **Precambrian granites which first pushed the mountains up,** composing everything west of Lyons to the continental divide.

Using these four materials on the site would echo the variety of Colorado's naturalistic and novel environments, as well as create an **opportunity to provide a passive educational experience** which transcends class distinction of any kind. Learning about the ground we all stand on and share is a unique and relevant way to bring the people of Longmont together.

Thus the redesign of St. Stephen plaza into **an instant of time where users can see the layers and begin to understand the forces that created the place they call home.** We began designing the plaza with this idea of **creating moments throughout.** The fountain, center of the plaza, pulls curious minds in with its stream of water that cascades down over the layers before collecting into a reflection pool at the bottom. **Passive users** can walk through the plaza, sit and enjoy the sound of flowing water that covers up some of the busy traffic along Main St. or warm up next to our


fire pits located along the edge of the fountain creating smaller moments within themselves. **Other investigative users** can climb up into the rock layers and dive into the planted landscape that grows from the fountain to follow the water to its source.

This exploration then leads you up along the back wall into more seating and opportunities for climbing and play. **This stacked seating also creates another moment,** one for entertainment as it swings around and encircles a stage that hugs the back corner of St. Stephens Church.

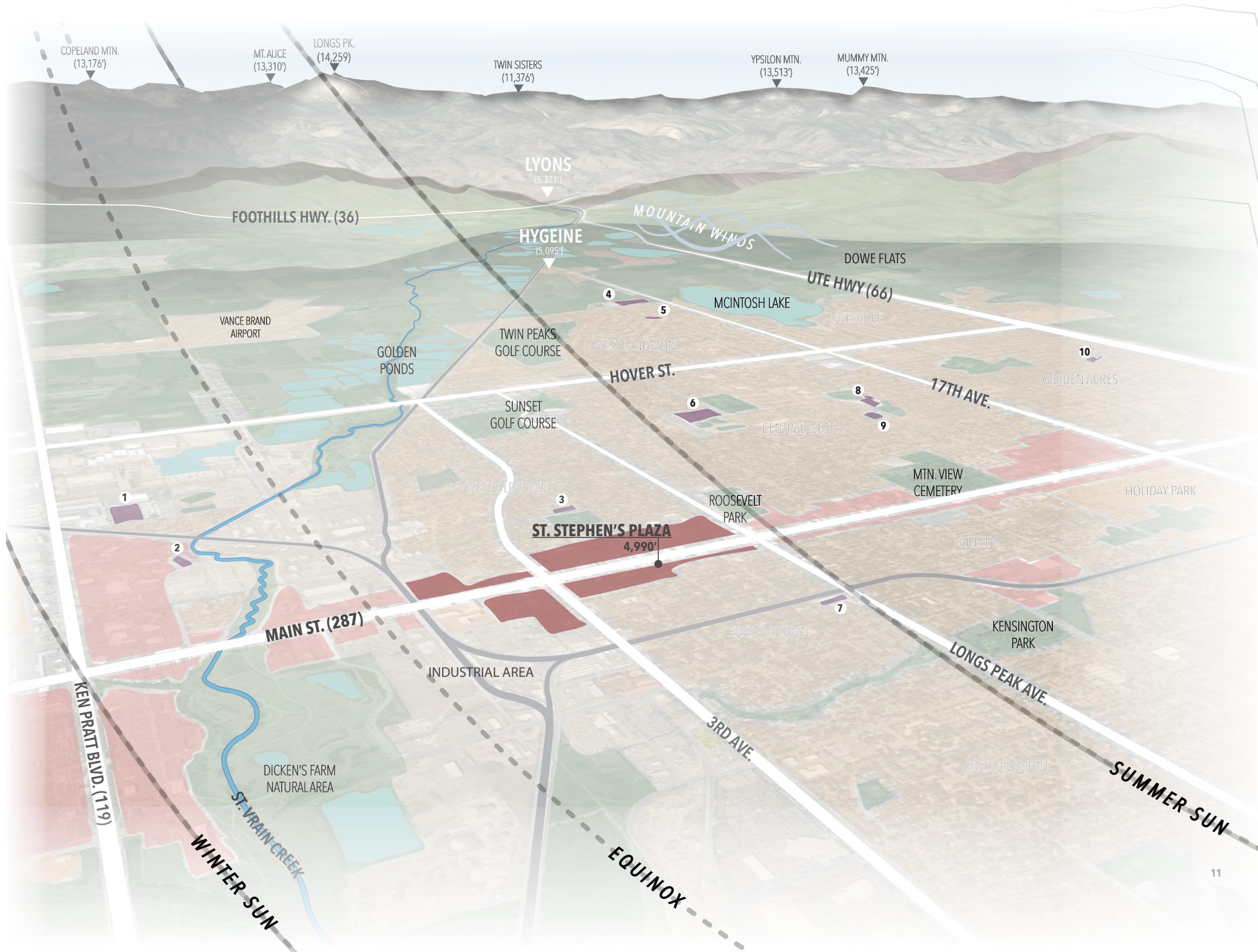
This stage, only being 2 low levels allows easy access, views, and a naturalistic location for a variety of events and performers to engage with anyone passing by. With the stage facing the back alley and side wall, there is opportunity for larger events, food trucks, and crowds that can now spill out and move comfortably within a larger open space. On quieter days, **the stage is multipurpose** and serves as a platform for movable tables and chairs but still a moment of pause and observation. There is more stacked and dynamic seating on the Northeast corner that mixes with planting beds and tables and **provides views** of the stage, alleyway, and North side of the site.

Moving around the North side, there is a **passive, nature play and exploration** area with dirt paths weaving in and out of denser plantings that create an **other-worldly experience for children of all ages** with "secret" bridges, boulders, and natural obstacles hidden throughout.

Overall, we want the site to be **inclusive** and used by all local families and visitors and **provide a chance to get away from Main St.** and enter a quieter and natural environment that also **teaches users about the history of their home and the earth they stand on.**



THE DESIGNERS .....	PG 2
DESIGNED SITE NARRATIVE.....	PG 3
TABLE OF CONTENTS.....	PG 4
COLORADO REGIONAL CONTEXT MAP.....	PG 5
LOCAL LONGMONT CONTEXT MAP.....	PG 6
SITE CONCERNS & SOLUTIONS.....	PG 7
MASTER PLAN .....	PG 8
PERSPECTIVES & 3-D MODEL.....	PG 9
SEATING PERSPECTIVE & DETAIL .....	PG 10
STAGE PERSPECTIVE & DETAILS.....	PG 11
FRONT PLATFORM PERSPECTIVE & DETAIL .....	PG 12
NATURE PLAY PERSPECTIVE & DETAIL .....	PG 13
SOUTH WALL & FIRE PIT DETAILS.....	PG 14
PLANTING PLAN.....	PG 15
DEMOLITION PLAN.....	PG 16
ADDITIONS TO EXISTING PLAN.....	PG 17
FINAL SUMMARY.....	PG 18
PERSPECTIVES.....	PG 19-22



<b>GRANITE</b>	PRECAMBRIAN IGNEOUS & METAMORPHIC
<b>SANDSTONE</b>	FOUNTAIN FORMATION LYONS FORMATION LYKINS FORMATION MORRISON FORMATION
<b>CHALK</b>	BENTON FORMATION NIOBRARA FORMATION
<b>SHALE</b>	PIERRE SHALE

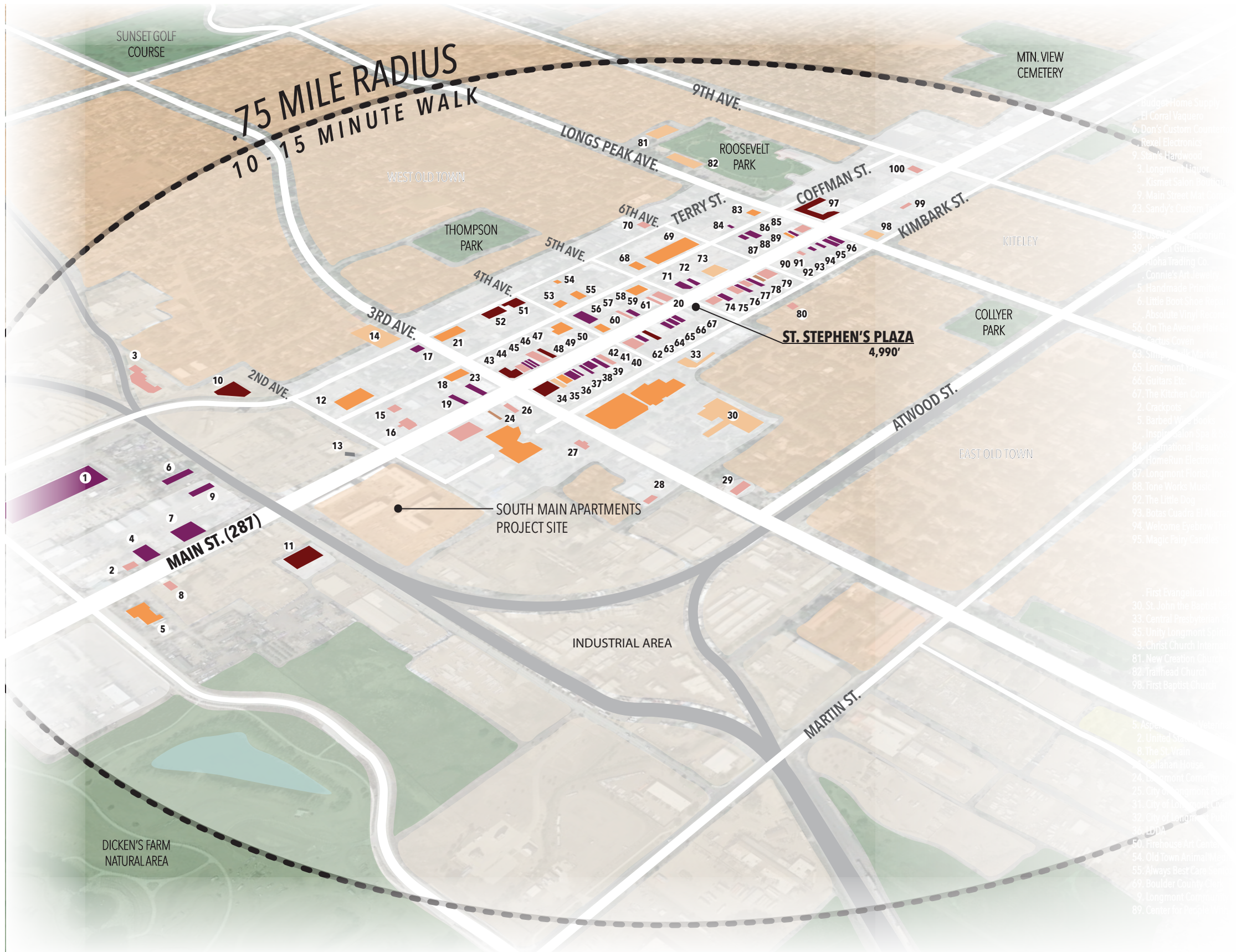
- RESIDENTIAL
- INDUSTRIAL
- GREENSPACE
- OPEN WATER
- COMMERCIAL
- DOWNTOWN
- SCHOOLS
  - 1.) Twin Peaks Charter Academy
  - 2.) St. Vrain Community Montessori
  - 3.) Central Elementary School
  - 4.) Westview Middle School
  - 5.) Longmont Estates Elementary School
  - 6.) Longmont High School
  - 7.) Columbine Elementary School
  - 8.) Longmont Middle School
  - 9.) Mountain View Elementary School
  - 10.) North Ridge Elementary School
  - 11.) Rocky Mountain Elementary School

ROAD  
 RAILROAD  
 CREEK



# RIB ROCK PLAZA

COLORADO REGIONAL CONTEXT MAP



## SHOPS

1. Budget Home Supply
4. El Corral Vaquero
6. Don's Custom Countertops
7. Rexel Electronics
9. Stan's Hardwood
13. Longmont Liquor
17. Kismet Salon Boutique
19. Main Street Mat Company
23. Sandy's Custom Tailoring
37. Old Town Marketplace
38. Used Book Emporium
39. Jensen Guitars
40. Aloha Trading Co.
41. Connie's Art Jewelry
45. Handmade Primitive Country Decor
46. Little Boot Shoe Repair
47. Absolute Vinyl Records & Stereo
56. On The Avenue Hair Salon
58. Cactus Coven
63. Simply Bulk Market
65. Longmont Yarn Shoppe
66. Guitars Etc.
67. The Kitchen Company
72. Crackpots
75. Barbed Wire Books
77. Inspire Salon Spa & Store
84. International Beauty Salon
86. HomeRun Electronics
87. Longmont Florist, Inc
88. Tone Works Music
92. The Little Dog
93. Botas Cuadra El Alacran
94. Welcome Eyebrow Threading
95. Magic Fairy Candles

## FOOD

2. Santa Fe Coffee & Burrito
3. Sugarbeet
15. Tortugas
16. Santiago's Mexican
20. La Vita Bella Cafe
22. Jester's Dinner Theater
26. Jefe's Longmont
27. Spicy House
28. Summit Tacos
29. Georgia Boys BBQ
42. SAMPLES
44. China Panda
48. Aime's Love G.F.Bakery
57. Janie's Cafe
61. Rosalee's Pizzeria
62. Ziggi's Coffee
70. Martini's Bistro
74. Winchell's Donuts
76. Mike O' Shays
78. Flavor of India
80. Lucile's Creole Cafe
85. Cheba Hut Toasted Subs
91. Dairy Queen
97. Bin 46 Wine Bar
99. Tasty Asia
100. Smack Daddy Pizza
8. McCarthy's Pub
10. Bootstrap Brewing
11. 300 Suns Brewing
34. Dicken's Tavern
43. The Speakeasy
49. 3's Bar
51. Longtucky Spirits
52. St. Vrain Cidery
64. Tex Mex
90. Pumphouse Brewery

## WORSHIP

14. First Evangelical Lutheran Church
30. St. John the Baptist Catholic Church
33. Central Presbyterian Church
35. Unity Longmont Spiritual Center
73. Christ Church International
81. New Creation Church
82. Trailhead Church
98. First Baptist Church

## PUBLIC AMENITIES

5. Aspen Meadow Veterinary Specialists
12. United States Post Office
18. The St. Vrain
21. Callahan House
24. Longmont Community Treatment Center
25. City of Longmont Public Safety Department (Police station)
31. City of Longmont Civic Center
32. City of Longmont Public Library
36. LDDA
50. Firehouse Art Center
54. Old Town Animal Medical Center
55. Always Best Care Senior Services
69. Boulder County Clerk
79. Longmont Community Justice Partnership
89. Center for People With Disabilities

## BANKS

53. TBK Bank
59. U.S. Bank
60. Guaranty Bank
68. Bank of the West
83. Wells Fargo Bank

# RIB ROCK PLAZA

LOCAL LONGMONT CONTEXT MAP

## SITE CONCERNS & NEEDS:

1.

LACK OF “STAY AND GATHER” SPACES AND PROGRAMMED MOMENTS FOR DIFFERENT AGES; NEEDS MULTI-USE AND VARIETAL PROGRAMMING

2.

LACK OF A COHESIVE PLANTING PLAN THAT IS LOW MAINTENANCE AND COMPRISED OF COLORADO-NATIVE PLANTS THAT THRIVE IN THIS SPECIFIC URBAN ENVIRONMENT/CLIMATE

3.

LACK OF PLAZA IDENTITY WITHIN LONGMONT’S CREATIVE DISTRICT, LACK OF HOLISTIC THEME THROUGHOUT PLAZA CONNECTING SITE TO THE REST OF THE DOWNTOWN AREA

## SITE DESIGNED SOLUTIONS:

1.

CREATION OF MOMENTS AND OPPORTUNITIES FOR VARIOUS LEVELS OF INTERACTION BASED ON PERSONAL PREFERENCE AND AGE, CLEARLY PROGRAMMED MOMENTS FOR A RANGE OF USERS

2.

REDESIGN OF THE PLANTING PLAN TO INCLUDE A COLORFUL, NATURALISTIC THEME WITH LOW MAINTENANCE PLANTS THAT THRIVE IN COLORADO’S URBAN ENVIRONMENT AND CLIMATE

3.

CREATION OF A HOLISTIC THEME SHOWING COLORADO’S GEOLOGICAL HISTORY, UNIFYING THE PLAZA THAT IS CENTERED AROUND NATURE PLAY, EXPLORATION AND REFUGE FROM THE URBAN FABRIC

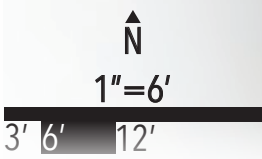


FIFTH STREET

MAIN STREET

ALLEY

- Front platform planter, views and seating
- Nature play area, exploration and play
- Sidewalk seating and planting
- Stacked planter and more seating, views
- Fire pit, protected, seating, nightly use
- Stage and wood back-splash, multi-use
- Shade structure, multi-use with season
- Rock water feature, geological theme
- Stacked seating follows geological theme
- Retaining wall along South wall
- Utilities open, accessible and protected



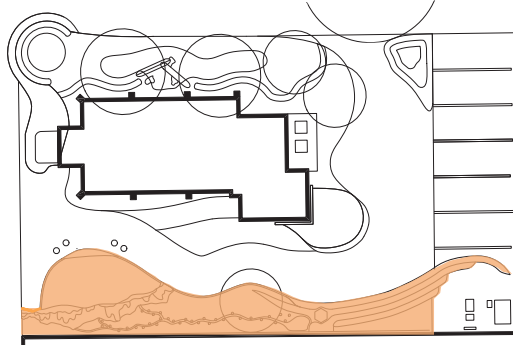
# RIB ROCK PLAZA

MASTER PLAN





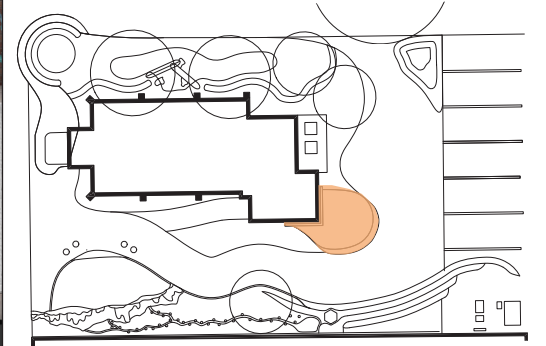
- Wrap around, stacked seating
- Exploratory play
- Stacked for views
- Acts as planting bed



SEATING PERSPECTIVE



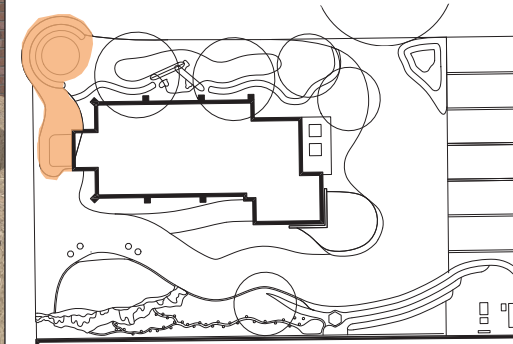
- Multiple views
- Adheres to various sizes of events
- Multi-use platform



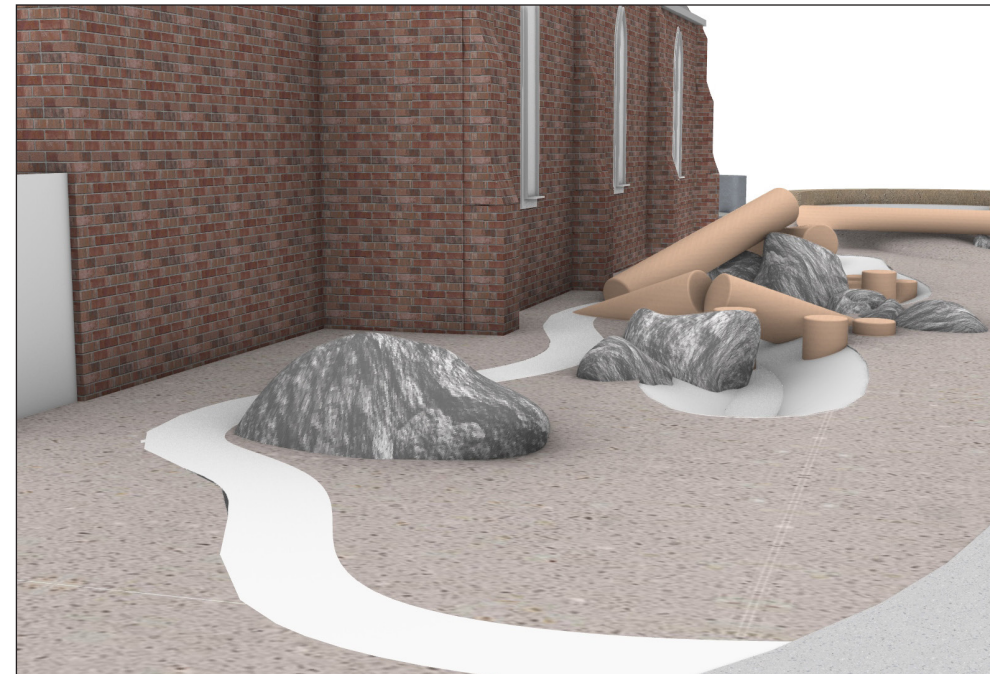
STAGE PERSPECTIVE



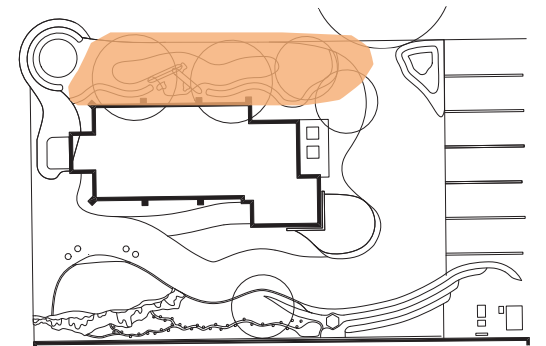
- Views of Main Street
- Views of children's nature play area
- Planting bed



FRONT PLATFORM PERSPECTIVE



- Nature play
- Exploratory adventure
- Calculated risk play
- Protected area



NATURE PLAY PERSPECTIVE

# RIB ROCK PLAZA

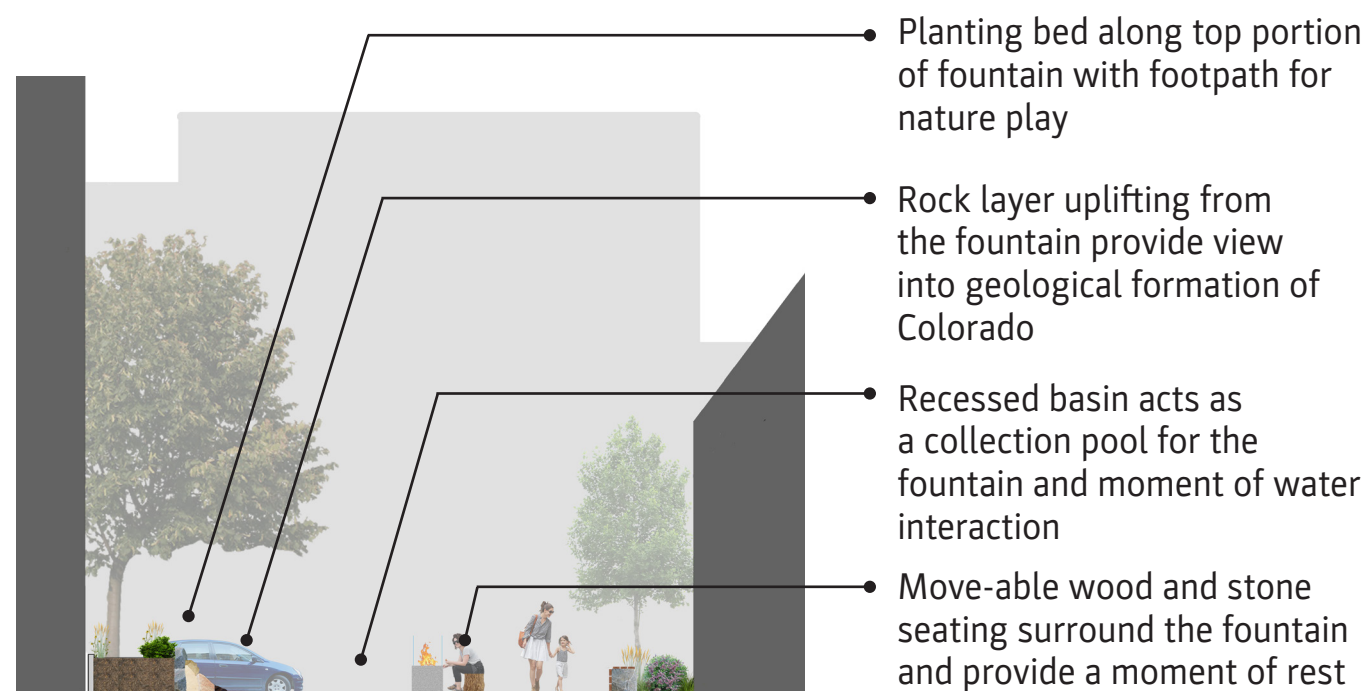
PERSPECTIVES & 3-D MODEL



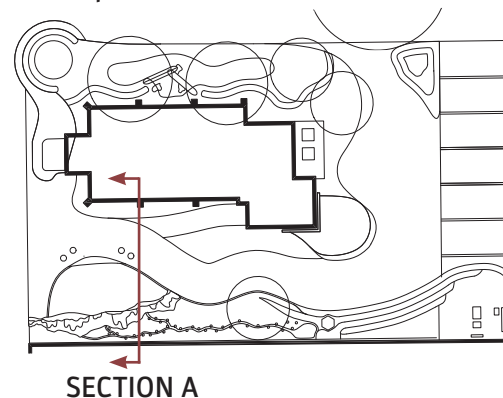
SOUTH WALL SEATING ELEVATION



SEATING MODEL  
PERSPECTIVE



SEATING SECTION A



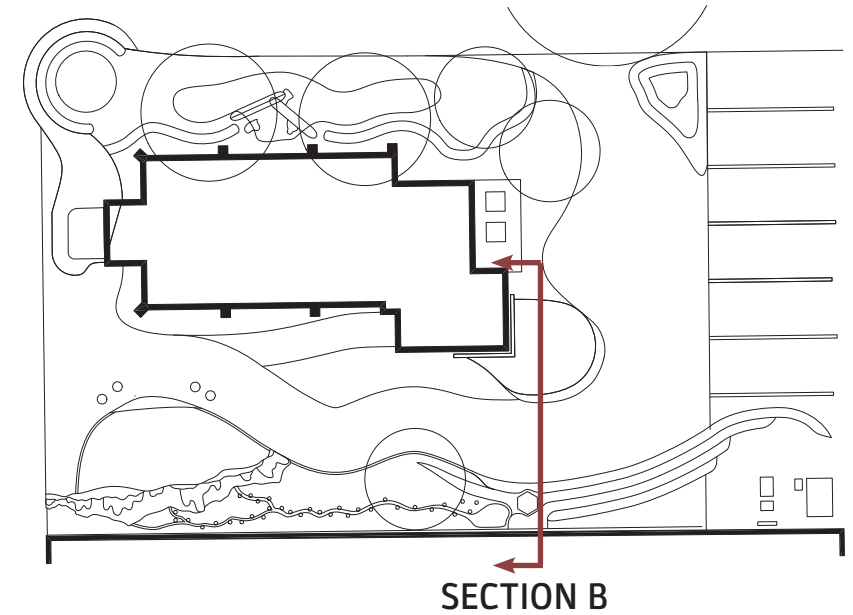
-  GRANITE
-  SANDSTONE
-  LIMESTONE
-  SLATE
-  CONCRETE
-  WOOD
-  VEGETATION

# RIB ROCK PLAZA

SEATING PERSPECTIVE & DETAILS




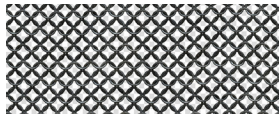




STAGE PERSPECTIVE



STAGE SECTION B

- Wooden back-splash, treated
- Shade structure, lights in winter, cloth covered in summer
- Double layered stage, provides seating on edge, and easy access
- Stage on corner provides 270 degree views, multi-use seating, variable event sizes

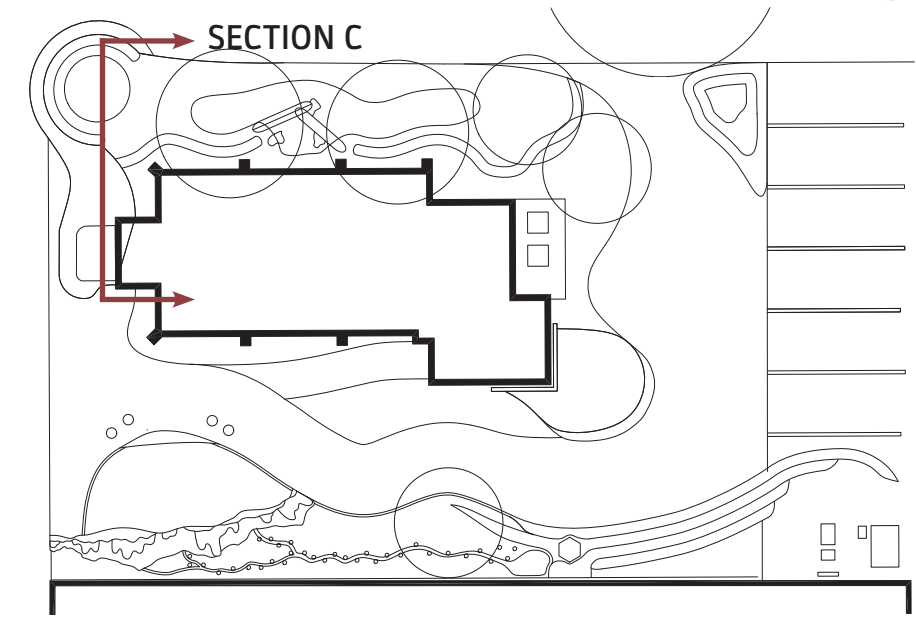
	STAGE FLOOR
	WOOD
	CONCRETE
	FENCING
	SEATING
	VEGETATION

# RIB ROCK PLAZA

STAGE PERSPECTIVE & DETAILS



PLATFORM PERSPECTIVE



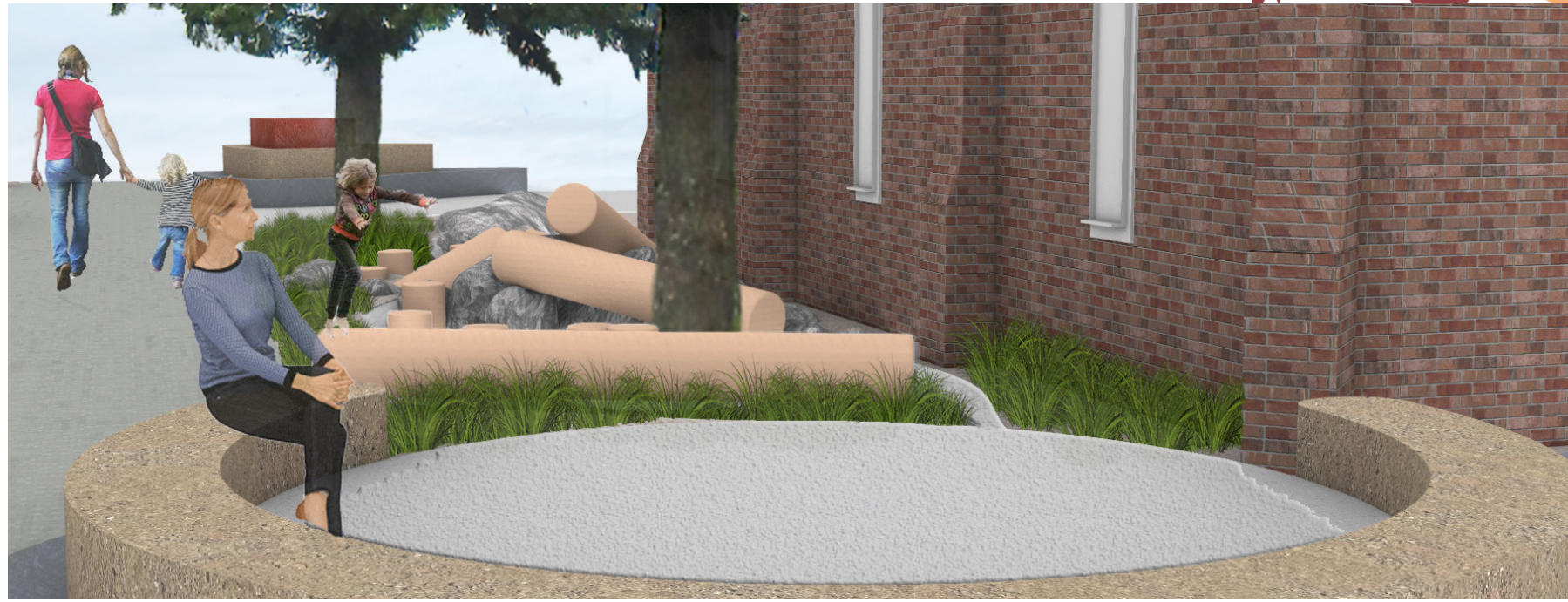
PLATFORM SECTION C

- Raised platform planter provides street views
- On the edge of the nature play area, with other natural seating
- Provides views for parent watching children within planters
- Provides views for parent watching children within planters

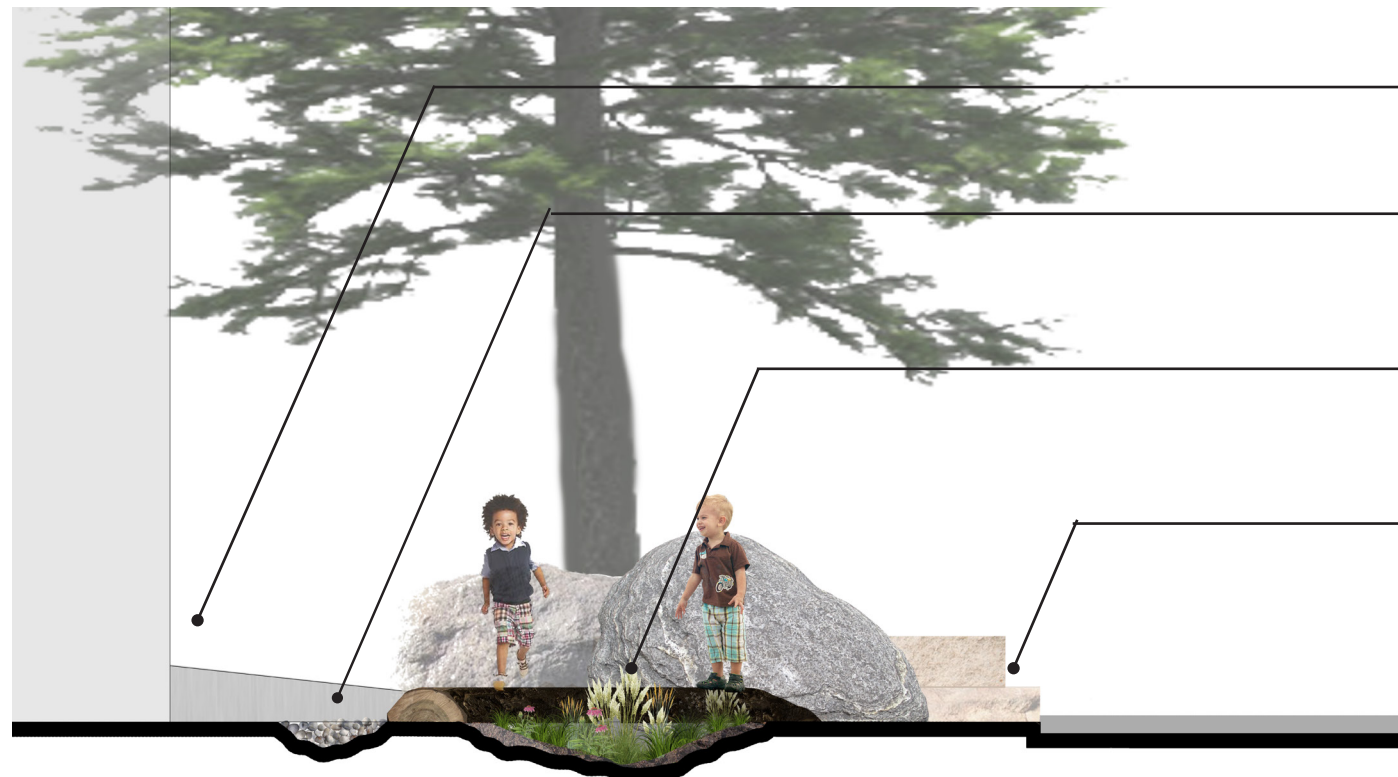
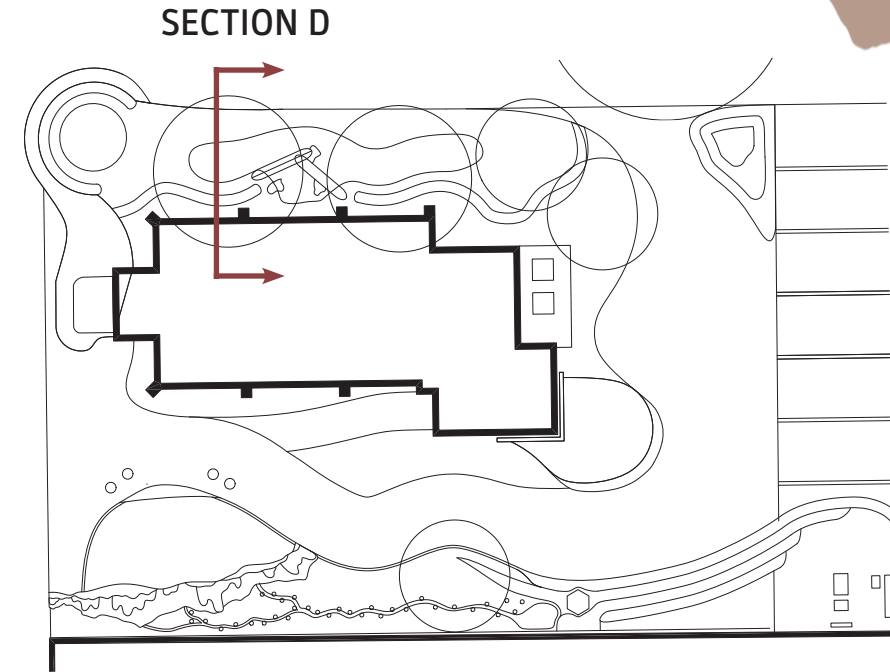
	CONCRETE
	VEGETATION
	GRANITE
	SANDSTONE
	LIMESTONE
	SLATE

# RIB ROCK PLAZA

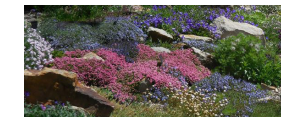
FRONT PLATFORM PERSPECTIVE & DETAILS



NATURE PLAY PERSPECTIVE



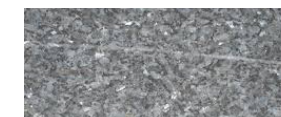
- Access to basement doors still available
- Exploratory play for children weave in and out of planting beds
- Ground is recessed around paths for irrigation and runoff control
- Connection to sidewalk and street, so grade becomes even, sidewalk creates a protective buffer from the street



VEGETATION



LOGS



GRANITE



SANDSTONE



LIMESTONE

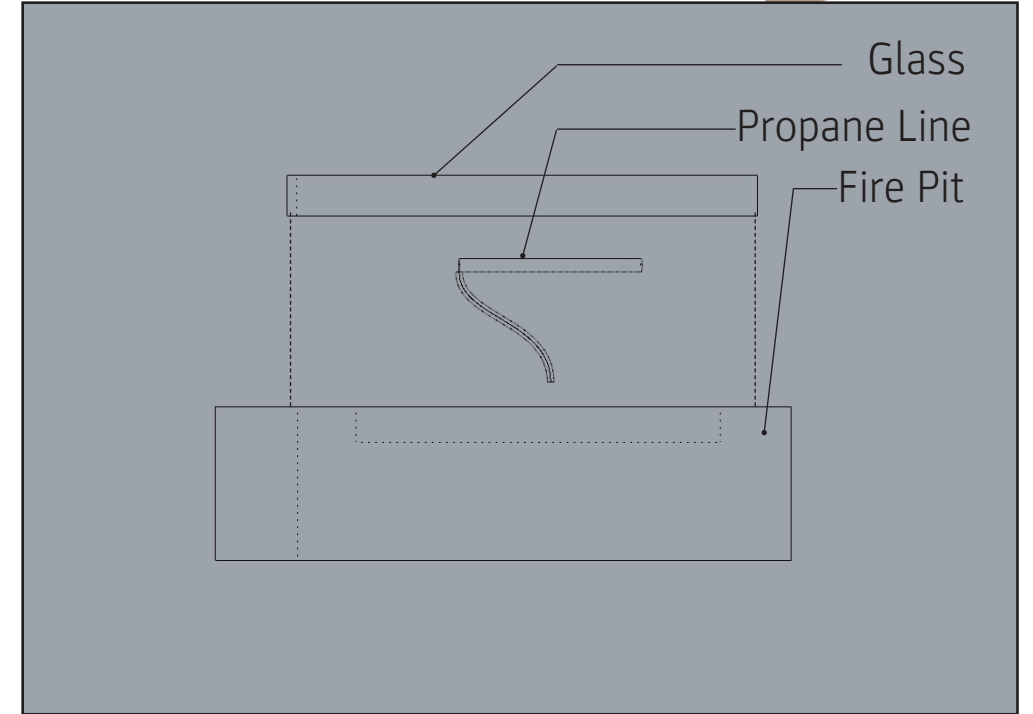
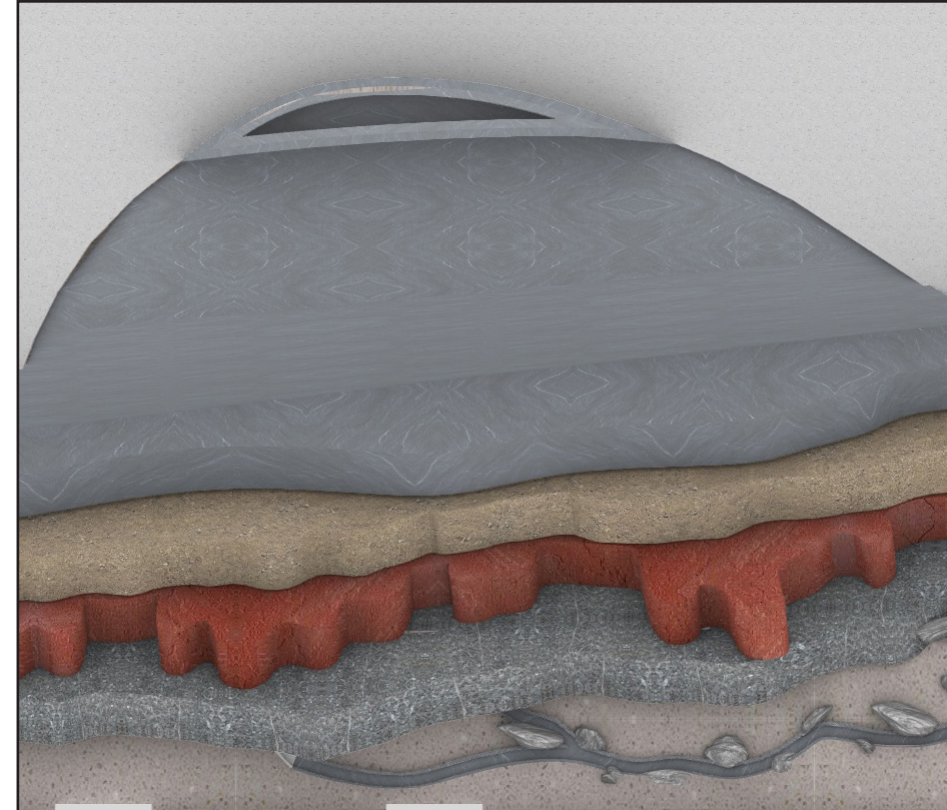
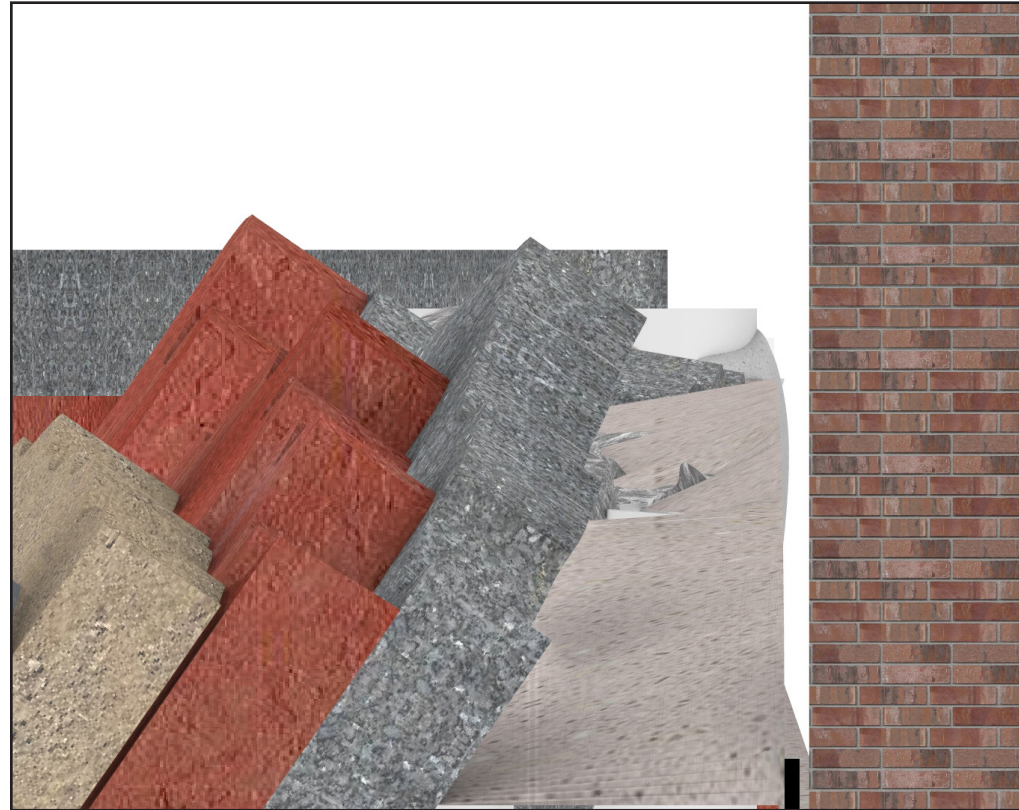


SLATE

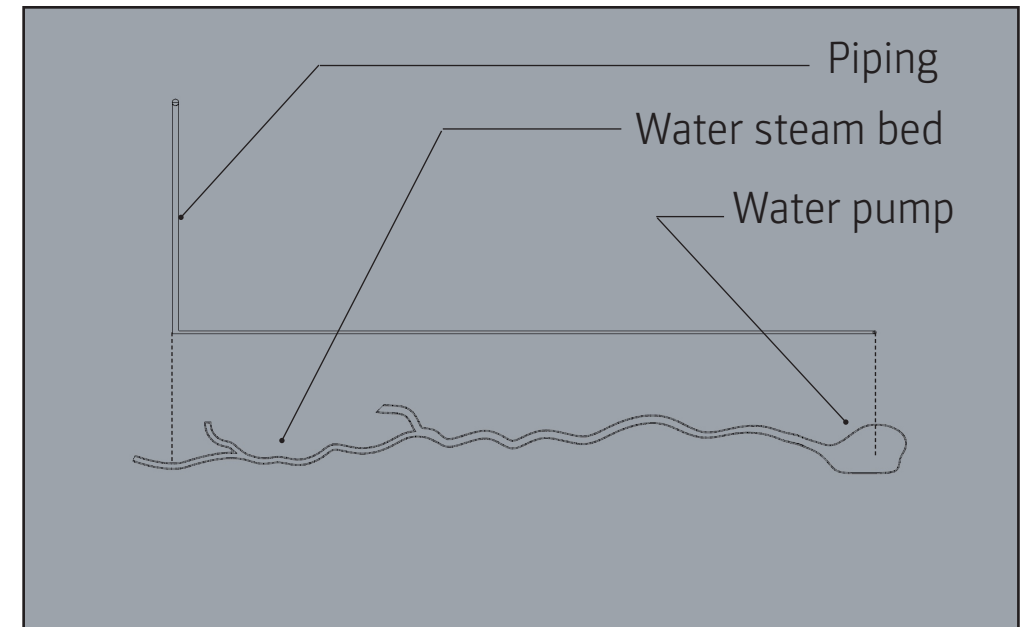
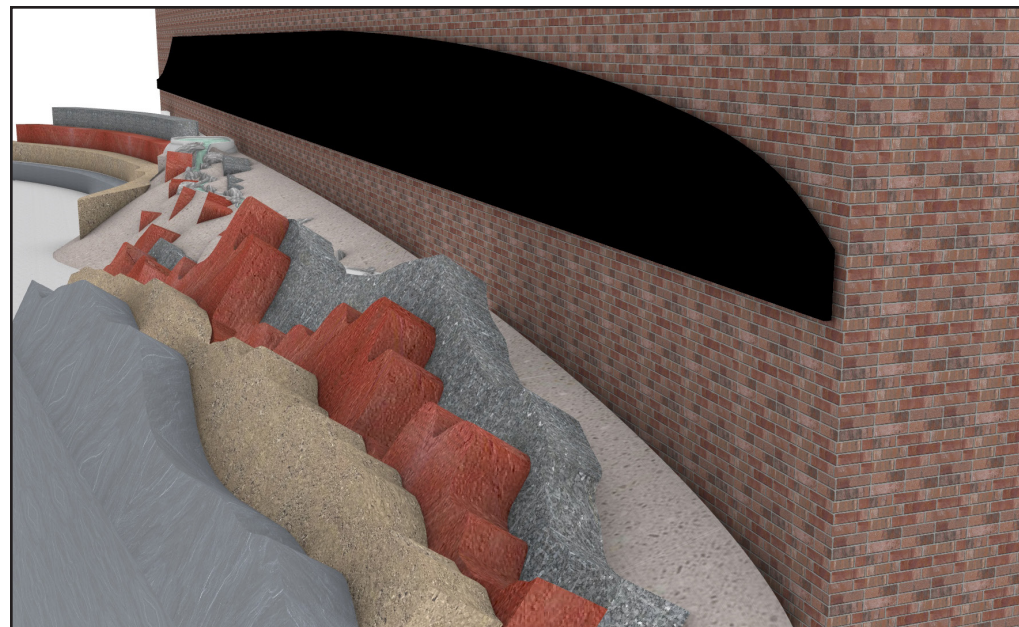
NATURE PLAY SECTION C

# RIB ROCK PLAZA

NATURE PLAY PERSPECTIVE & DETAIL



FIRE PIT DETAILS



WATER PUMP DETAILS

RETAINING WALL DETAIL

NATURE PATH DETAIL

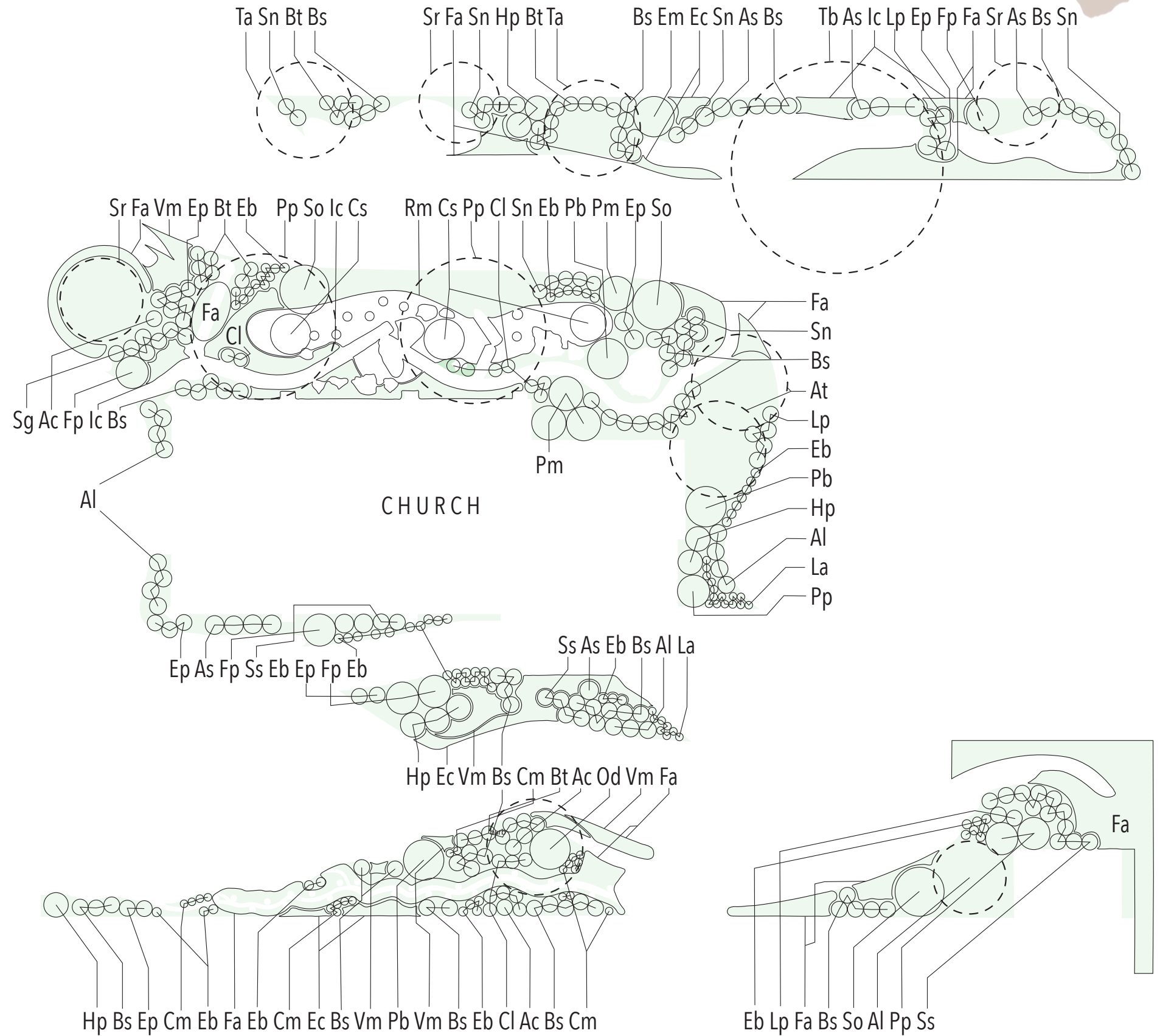
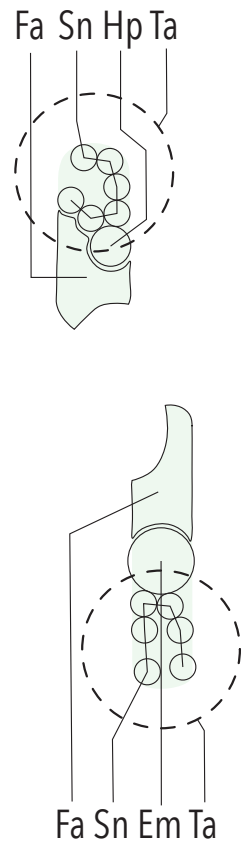
# RIB ROCK PLAZA

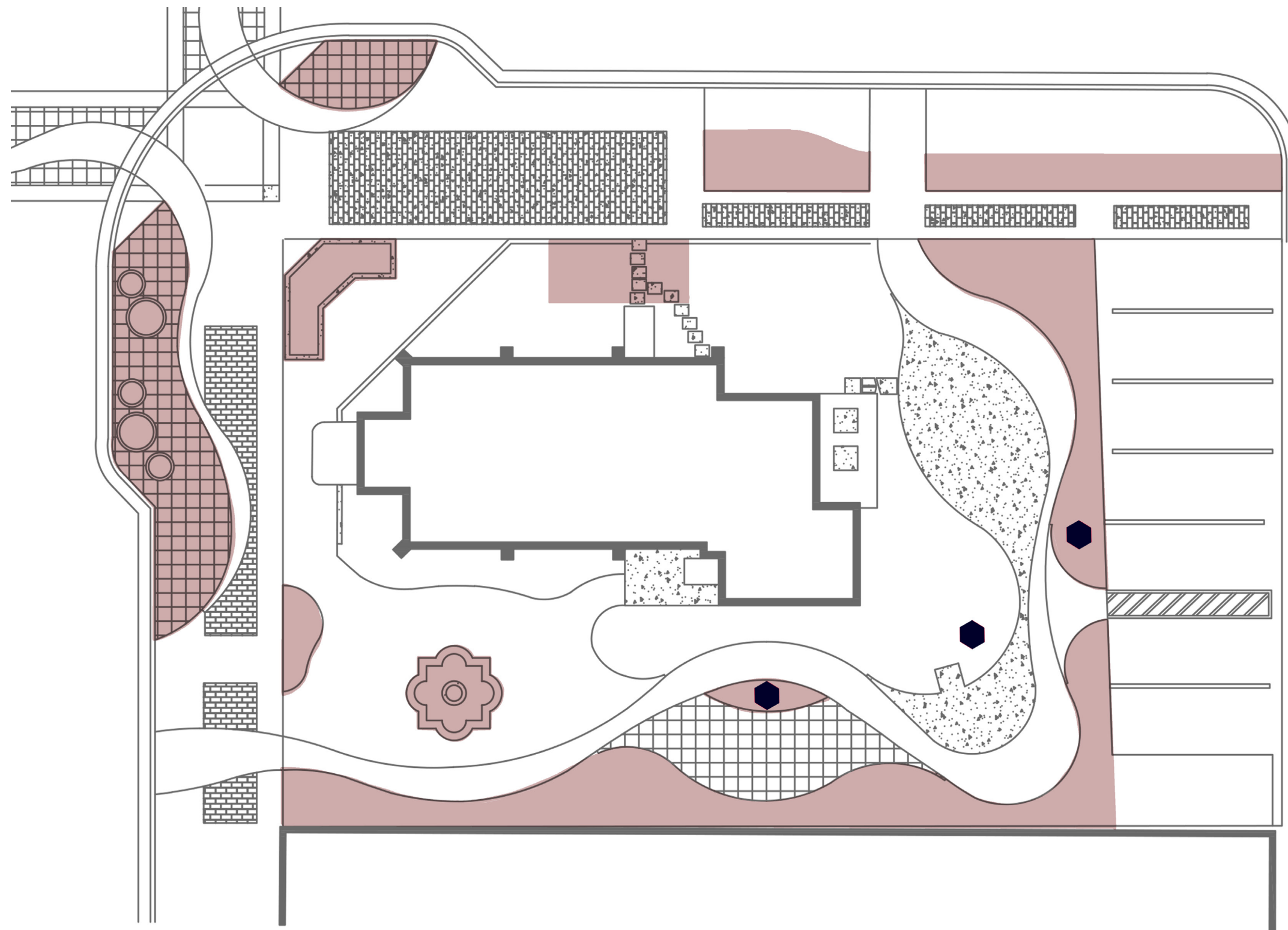
SOUTH WALL AND FIRE PIT DETAILS


* BOTANICAL	COMMON	HEIGHT	SPREAD	#	
Pp	<i>Picea pungens</i>	Blue Spruce	40'	30'	2
Ta	<i>Tilia americana</i>	American Linden	15'	10'	4
Sr	<i>Syringa reticulata</i>	Japanese Lilac	15'	10'	3
At	<i>Acer tataricum</i>	Tatarian Maple	10'	10'	2
Tb	<i>Taxus baccata</i>	Yew	20'	25'	1
Ag	<i>Amalanchier grandiflora</i>	Serviceberry	15'	10'	1
Al	<i>Abies lasiocarpa</i>	Subalpine Fir	30'	10'	1

So	<i>Symphoricarpos oreophilus</i>	Snowberry	5'	5'	3
Od	<i>Oreobatus deliciosus</i>	Boulder Raspberry	5'	5'	1
Pm	<i>Physocarpus monogynus</i>	Mountain Ninebark	5'	5'	4
Pb	<i>Prunus besseyi</i>	Sand Cherry	5'	5'	3
Cs	<i>Cornus sericea</i>	Red Osier Dogwood	5'	10'	3
Em	<i>Eupatorium maculatum</i>	Spotted Joe Pye Weed	5'	6'	3
Fp	<i>Fallugia paradoxa</i>	Apache Plume	5'	5'	5
Pp	<i>Picea pungens</i>	Globe Blue Spruce	4'	4'	5
Al	<i>Artemisia ludoviciana</i>	Silver Sagebrush	4'	4'	14
Cl	<i>Chasmanthium latifolium</i>	Northern Sea Oats	3'	2'	17
Sn	<i>Sorghastrum nutans</i>	Indiangrass	2'	3'	31
Ep	<i>Echinacea purpurea</i>	Purple Coneflower	2'	2'	21
Ac	<i>Aquilegia Caerulea</i>	Colorado Columbine	2'	2'	4
Lp	<i>Liatris punctata</i>	Dotted Gayfeather	2'	2'	15
Ss	<i>Salvia splendens</i>	Vista Purple Salvia	3'	2'	23
As	<i>Asclepias speciosa</i>	Showy Milkweed	2'	2'	15
Bs	<i>Buxus sempervirens</i>	Common Boxwood	2'	2'	ex.
Bt	<i>Berberus thunbergii</i>	Barberry	1.5'	1'	ex.
Hp	<i>Hesperaloe parviflora</i>	Brakelights Yucca	1.5'	2'	8
Eb	<i>Echinops bannaticus</i>	Blue Globe-Thistle	1'	1'	40
La	Lupine	Lupinus argenteus	1'	1'	23
Cm	<i>Centaurea montana</i>	Mountain Bluet	1'	1'	20

Ec	<i>Eonymus coloratus</i>	Wintercreeper	GC	GC	GC
Fa	<i>Festuca arundinacea</i>	Blue Fescue	GC	GC	GC
Vm	<i>Vinca minor</i>	Periwinkle	GC	GC	GC
Ic	<i>Ilex cornuta</i>	Holly	GC	GC	GC
Rm	Raingarden Mix		GC	GC	GC



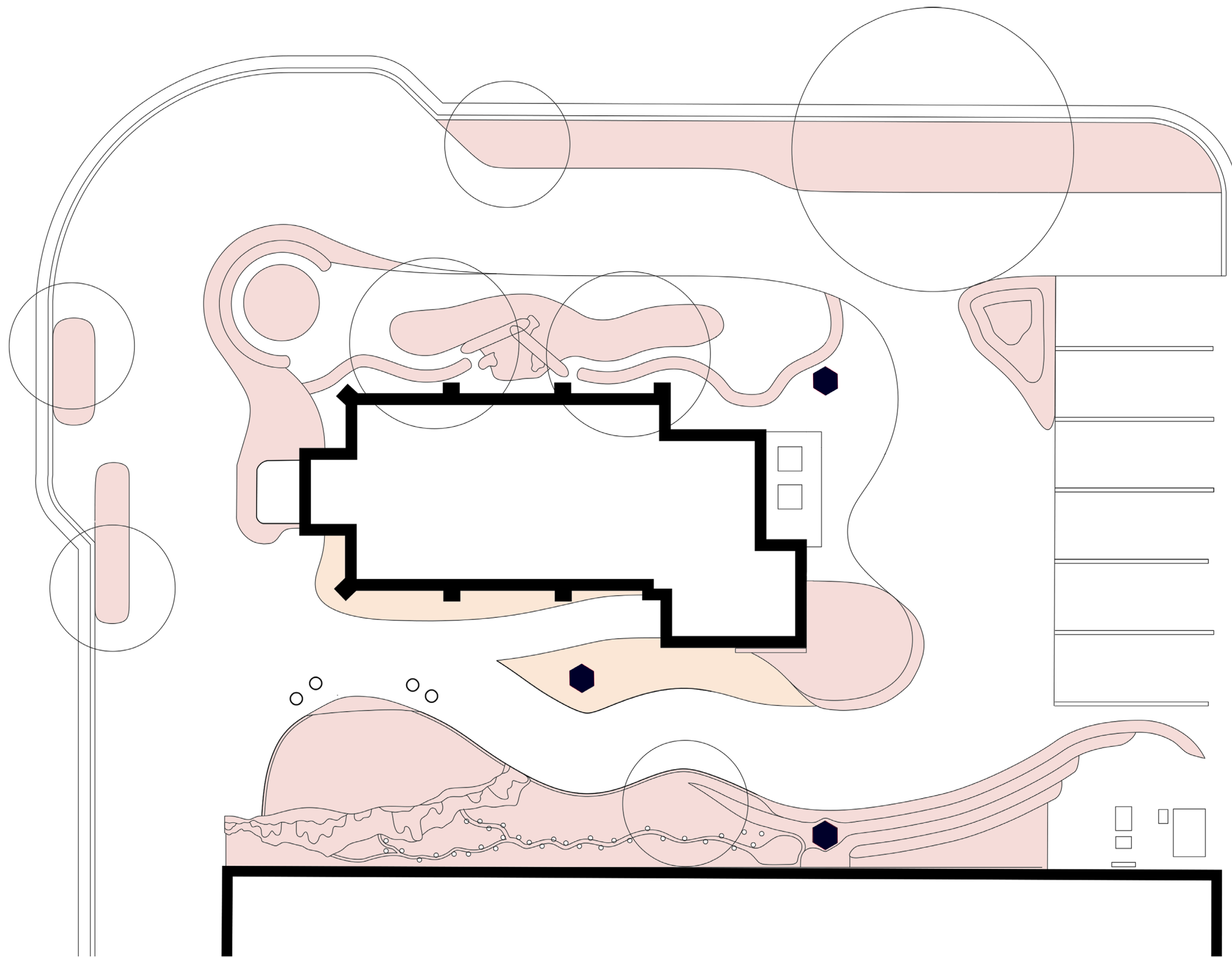


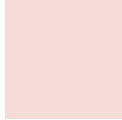
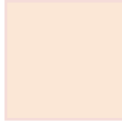
 Areas and features being demolished and/or changed.

# RIB ROCK PLAZA


DEMOLITION PLAN





-  Areas added to existing site plan
-  Areas altered slightly from existing plan

**RIB ROCK PLAZA**  
ADDITIONS TO EXISTING PLAN



In conclusion, our Rib Rock Plaza addresses the lack of “stay and gather” and programmed spaces by **creating designated moments** such as the **fountain feature, stage and entertainment space, the nature play area and the front viewing platform**. All areas can be easily accessed and used by all different ages and abilities

The planting plan of Rib Rock Plaza also adds to the site as a whole with its **low maintenance** and carefully chosen plants that **thrive and flourish in Colorado’s urban environment**

Lastly, the overarching theme of showing **Colorado’s geological history** is what brings the entire plaza and all it’s moments together, **creating a unified space for all**

Recognizing something shared is a strong way to **bring a community together** by learning about something relevant to everyone. Using **nature** as this underscoring element **educates children and adults alike** about the **geological, horticultural, and hydrological properties** of Longmont & Colorado’s Front Range



**RIB ROCK PLAZA**  
PERSPECTIVES



**RIB ROCK PLAZA**  
PERSPECTIVES



RIB ROCK PLAZA  
PERSPECTIVES



RIB ROCK PLAZA  
PERSPECTIVES