

Supply Chain Management Emphasis Guide

Career Guide



Leeds School of Business
UNIVERSITY OF COLORADO BOULDER

EXPLORE

The principal function of any organization is the efficient creation and delivery of products and services to its customers (operations). The **Supply Chain Management** area of emphasis focuses on this **creative process** and identifies how organizations use **productivity, quality, flexibility, timeliness, and technology** to compete and prevail in their markets. Students graduating from the Supply Chain Management emphasis will have a broad understanding of the **importance of operations in the success of any organization** and will be qualified to serve in entry-level line management positions and as general managers later in their careers.

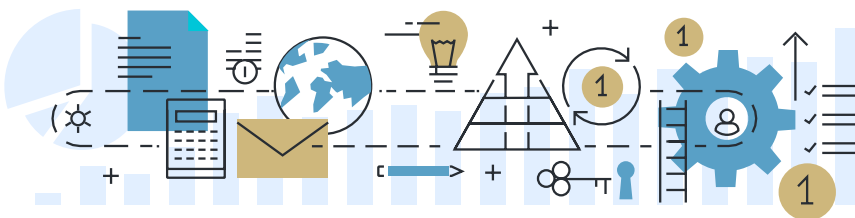
Management students who are planning careers in **business, government, or non-profits** and wish to earn their undergraduate degree in supply chain are strongly encouraged to take substantial course work outside the required courses, such as Management Information Systems and CESR.

Industry Overview

After completing the Supply Chain Management emphasis, students find opportunities as supply chain analysts, production managers, quality assurance managers, logistics managers, purchasing analysts, consultants, sales representatives, management trainees, project managers, and many other interesting and rewarding careers.

Top Hiring Industries

Aerospace	Entertainment	Media
Construction	Financial Services	Real Estate
Consumer Products	Food and Beverage	Recreation
Electronics Energy	Healthcare	Technology
	Manufacturing	



Additional Tips

Organizations to Join

- Institute of Supply Management
- Supply Chain Management Club

Events & Networking

- Attend Career Fairs
- Attend Meet & Greet/Office Hours with employers

Course Electives Employers Notice

- Project Management
- Critical Leadership Skills
- Excel Courses

Recruiting Timeline

► Fall Semester

Large corporate companies will begin recruitment in the fall for internships and jobs; however, the main focus of recruitment will be in the spring for internships and full-time positions.

► Spring Semester

Recruiting begins in January and will run throughout the semester for both summer internships and full-time positions.

Resources

Resume and Cover Letter Templates and Examples on leeds.ly/CareerRoundup
Make an appointment with your Industry Coach today at leeds.ly/careeradv
Stay up to date on jobs and events at leeds.ly/Handshake

Supply Chain Management Emphasis Guide

Academic Guide



Leeds School of Business
UNIVERSITY OF COLORADO BOULDER

REQUIRED COURSES



MGMT 3100:
Operations Management



MGMT 4110:
Supply Chain Management

CHOOSE THREE ELECTIVES

In addition, students in the Supply Chain Management emphasis must complete three of the following courses:

MGMT 4120: Managing Business Processes

MGMT 4130: Sustainable Operations

MGMT 4140: Project Management

MGMT 4150: International Operations Management

MGMT 4400: Quality Management

MGMT 4820: Decision Analytics

REQUIRED SENIOR CAPSTONE



MGMT 4850:
Senior Seminar
in Management

QUICK REMINDERS

- ▶ Students must complete all **BCOR** and **BASE** classes to enroll in any **Area of Emphasis** classes.
- ▶ All courses are **3 credit hours** unless otherwise noted.
- ▶ The Supply Chain Management emphasis requires a total of **18 credit hours**, or **6 courses** can be completed in **3 semesters**.
- ▶ Course requirements above are for students declaring the emphasis in Fall 2025 and later.



Book an appointment with an advisor today!
appointments.colorado.edu