

The Hale Herald

A Bulletin for the Department of Anthropology

Fall 2021



Anthropology

UNIVERSITY OF COLORADO **BOULDER**

Email: anthro@colorado.edu | Phone: 303-492-2547 | Fax: 303-492-1871
Address: 233 UCB, Boulder, CO 80309



Contents

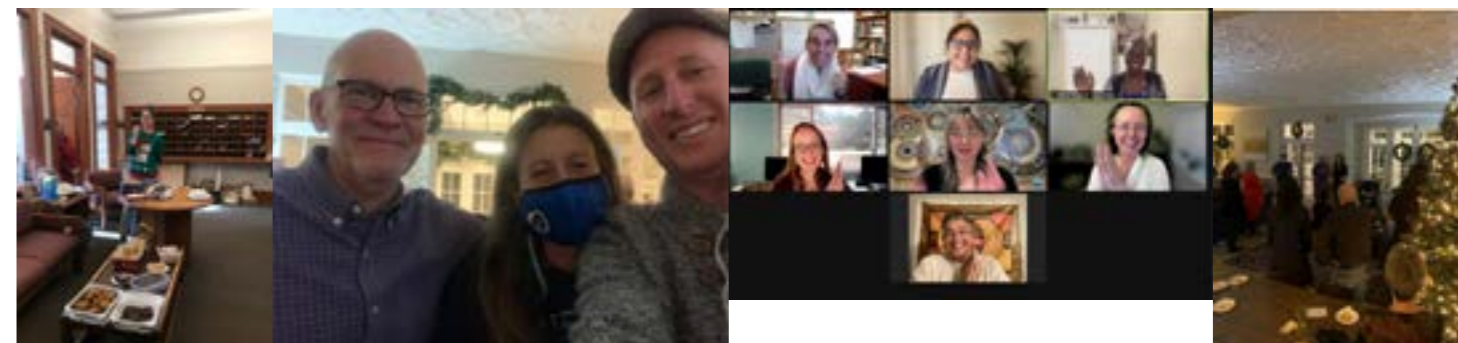
- Note from the Chair—3
- Graduate Student News —4
- Graduate Fellowship, Award, and Grant Winners — 6
- Graduate Degrees Awarded — 7
- Graduate Student Publications — 9
- Undergraduate Student Awards and Accomplishments — 10
- Undergraduate Degrees Awarded — 11
- Faculty News, Awards and Achievements — 12
- Faculty Publications — 17
- Alumni News — 18
- Global Seminars — 19
- CU Field School — 21
- Support CU Anthropology — 22
- Stay in Touch — 23



Note from the Chair

Welcome to the end of 2021 and the start of 2022. We hope this edition of the Hale Herald finds you and your loved ones safe and sound despite what feels to be an almost never-ending pandemic. With more and more classes being taught in person, the halls of the Hale Science Building are starting to take on renewed life as faculty, staff, and students begin our return to normalcy and enjoy convivial encounters with one another. In the pages that follow, enjoy the many accomplishments of the department.

Happy Holidays!





Sasha Buckser (PhD Archaeology in Progress)

Anthropology Ph.D. student Sasha Buckser was announced as the winner of the [Student Poster Competition](#) at the Plains Anthropology Conference, held this year at the Embassy Suites in Boulder. The award is given annually to the top student research poster at the annual conference, which draws together archaeologists and anthropologists from across the Great Plains.

Sasha, who works as a student researcher in the museum's Archaeozoology Laboratory (<https://www.colorado.edu/cumuseum/research-collections/anthropology/archaeozoology-laboratory>), received the honors for interdisciplinary analysis of ancient canid remains from Wyoming. The award-winning poster is entitled "Exploring Human-Canid Relationships of the 17th Century Northern Rockies."

Chance Ward (PhD Museum & Field Studies in Progress)

Congratulations to Museum and Field Studies Graduate Student, Chance Ward, whose Colorado Council of Professional Archaeologists (CCPA) award was featured in A&S Magazine.

Chance Ward, a graduate student in the University of Colorado Boulder's Museum and Field Studies Program, has received an award from the Colorado Council of Professional Archaeologists (CCPA) to support his studies.

Ward, a member of the Cheyenne River Sioux Tribe in South Dakota and a member of the Mnicoujou and Hunkpapa bands of the Lakota Nation, won a scholarship to fund book purchases, travel and materials for his master's studies that include museum curation, collections management, artifact analysis, cultural preservation laws and tribal preservation programs.

"It means a lot for me. It's a very competitive scholarship among other highly qualified applicants," Ward said. "Getting this award means that I'm on a career trajectory that I am passionate about and I know that I will be able to do well. It's nice to see that effort be recognized."

Read the article in its entirety - [A&S Magazine](#)



Sabrina Bradford (PhD Biological Anthropology in Progress)

Graduate student, Sabrina Bradford, successfully defended her research prospectus, *Human-Grizzly Bear Conflict on Agropastoral Landscapes*. She now advances to PhD candidacy.



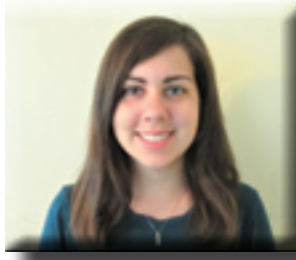
Scarlett Engle (PhD Cultural Anthropology in Progress)

Graduate student, Scarlett Engle, successfully defended her research prospectus, *The Power of Placemaking: Collaborating with Descendant Communities to Re-Imagine the Chapin Mesa Archeological Museum*. She now advances to PhD candidacy.



Arielle Milkman (PhD Cultural Anthropology in Progress)

Graduate student, Arielle Milkman, successfully defended her research prospectus, *Mobility and Environmental Health in Wildfire Response Communities*. She now advances to PhD candidacy.



Kaitlyn Davis (PhD Archaeology in Progress)

Kaitlyn was awarded a SAROI Fellowship for the 2021-22 year. Kaitlyn is one of eight fellows who represent the many applications of spatial archaeology that can enhance humanities-oriented inquiries.



Kelsey Hoppes (PhD Archaeology in Progress)

Graduate student, Kelsey Hoppes, was named the Crow Canyon Archaeological Center Carhart Fellow based on her substantial contributions to their archaeology program during her summer internship.



Arielle Milkman (PhD Cultural Anthropology in Progress)

Graduate Student, Arielle Milkman received an NSF DDRIG award to begin February 2022, which will support her doctoral fieldwork, *Mobility and Environmental Toxicity in Wildfire Response Communities*.



Devin Pettigrew (PhD Anthropology 2021)

Ph.D. Student Devin Pettigrew successfully defended his dissertation, *The Origins and Evolution of Pre-Industrial Hunting Weaponry: Ongoing Challenges and Recent Developments*.



Bailey Duhé (PhD Anthropology 2022)

Cultural Anthropology Ph.D. Student Bailey Duhé successfully defended her dissertation, *Fluid: Louisiana Creole Identity and Racial Mixture in the United States*.

Vanessa Monson (MA Anthropology 2021)

Vanessa completed a successful defense of her independent research paper, "Urbanization and Domestic Life in Rio Viejo, Oaxaca, Mexico."



Sandy Kulenguski (MA Anthropology 2021)

Sandy successfully defended her independent research paper, "Ancient Water Management: Mesoamerican Analogues for the Artificial Depressions at Rio Viejo."

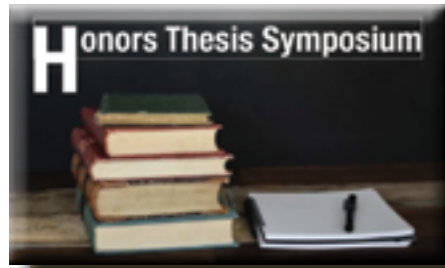
Chu Paing

2021. Chu May Paing and Than Toe Aung. "[Talking Back To white "Burma Experts"](#)" Agitate Journal.

Chilton Tippin

2021. Tippin, C. "[A Tale of Two Waterscapes: American Indian Water Law and the Question of Quantification in Neighboring Western States.](#)" Journal of the Southwest 63(2), 231-254.

2021. Tippin, C. "[The Household Water Insecurity Nexus: Portraits of Hardship and Resilience in U.S-Mexico Border Colonias.](#)" Geoforum 124, 65-74.



Ashley Sue Howard (Anthropology Undergraduate Honors Program)

Ashley received magna cum laude honors for her thesis, "Politics, Philosophy, and Patriarchy in the Reign of Empress Wu: Analysis of Tang Dynasty Religious and Gender Imagery in Elite-Sponsored Buddhist Caves at Mogao Grottoes, China" Ashley was honored as one of three students selected to speak at the Arts & Sciences Honors Program Honors Thesis Symposium for Fall 2021. The Symposium showcases three exceptional Honors students who have recently defended their theses

Congratulations Fall 2021 Undergraduates!

Anthropology Majors

Aidan Alexandre Carroll
Arij A Gabir
Ashley Sue Howard
Avery D Young
Ciana Marissa Thompson
Daniel Patrick Mullen
Emma Juniper Fowler
Gabriel William DuPont
Gabiella Alexandra Miller
Gemma Donovan
Gillian Miller
Isabella Michelle Grass
Lonni Marie Ewing
Melissa Nielsen
Miranda Claire Glenn
Mitchell McAlister
Olivia Blake Shorter
Riley Meisner
Ryan Thomas McKinney
William Moorhouse Langer

Anthropology Minors

Ari Freed Sonnenberg
Ava Ogaz
Brittany Byrd
Fiorella Merel Swanson
Isabella Jones
Jacob Daniel DeWild
Kylie Renee Christoffersen
Luis Antonio Alvarez
Olivia Diane Bulik
Sarah Elizabeth Bullwinkle
William Sirkin MacLeod

*We look forward to honoring our fall 2021 graduates at spring commencement in May 2022!

Professor Donna Goldstein and Ph.D. Student Anna Wynfield's COVID 19 Policy Research Featured in A&S Magazine

Professor Donna Goldstein and Ph.D. student Anna Wynfield's COVID 19 policy research featured in A&S Magazine. Their research studies the challenges and successes of social distancing policies country to country.

Since COVID-19's discovery in Wuhan, China in Jan. 2020, one of the greatest challenges of managing its spread has been the patchwork-policy approach around the world—from complete shutdown of borders like New Zealand's to the initial attempt at “herd immunity” in Sweden.

Researchers from the University of Colorado Boulder, as part of a collaboration led by Elizabeth Alvarez of McMaster University, though, hope to provide clarity about what policies actually worked.

The effort, COVID-19 Policies & Epidemiology Research Project, is a comparative analysis of the challenges and successes of mitigating COVID-19, looking at the effectiveness of social distancing policies and their epidemiological outcomes from country to country.

“What will social distancing and masking do in a range of countries across the globe to stem the tide of COVID?” asks Donna Goldstein, a CU Boulder anthropology professor and one of the project's researchers.

“What I really continued to believe in about this project and what I love about it is, it really has at its core this comparative depth that can really show you what worked and what didn't work where and what things fell apart.”

On a Zoom call in April 2020, Alvarez, an assistant professor in the department of health and research methods, evidence and impact at McMaster University, presented the project to Goldstein and other researchers on the CONVERGE (National Science Foundation initiative housed at the CU Boulder Natural Hazards Center) collaborators Zoom call with the project's leading question: What public physical distancing policies were implemented to combat SARS-CoV-2 and how did they influence the epidemiology of SARS-CoV-2?

From there, some of the researchers, including Goldstein, decided to get involved.

Read the article in it's entirety - [A&S Magazine](#)



Scott Ortman Receives the Provost's Faculty Achievement Award

This award recognizes and celebrates the research, scholarship, and creative work of CU Boulder's faculty members. There are two sets of awards: one to recognize the work and promise of pre-tenured faculty, and the second to recognize the accomplishments of recently tenured associate professors.

Professor Terry McCabe's Research Featured in Notre Dame Magazine

CU Professor and Notre Dame alum Terry McCabe's research on Turkana and Maasai cultures is highlighted in the latest issue of Notre Dame Magazine.

Nomad's Land

Embedded in pastoral African communities for decades, anthropologist J. Terrence McCabe '70 documents the resourcefulness and resilience needed to survive a harsh climate and violent conflict — and encounters struggles common to all people.

Before venturing for the first time into the Turkana district of northwestern Kenya to study the land- and livestock-management practices of the region's nomadic herders, J. Terrence McCabe '70 picked up a newspaper in Nairobi. He saw an article about his destination under the headline, “A land where even the flies have fled.”

McCabe read about the hot, arid climate, the snakes, and the violent, intertribal raids endemic to the area where he was about to begin anthropological fieldwork. This was 1980, when he was a doctoral student at the State University of New York at Binghamton. From what little research existed on the Turkana people, he knew they were “famous for being very difficult to work with. And so that was a bit intimidating.”

Read the article in it's entirety - [Notre Dame Magazine](#).





Akira Ichikawa's Publication Announced on Both Science & National Geographic Websites

Akira Ichikawa's new publication about his research on the Mayan Campana Pyramid has been announced on both science.org and nationalgeographic.com.

Fifteen hundred years ago, Ilopango, a caldera volcano in what is now El Salvador, erupted in one of the largest events of its kind in recorded history. Known as the Tierra Blanca Joven eruption, it shot 10.5 cubic miles' worth of tephra—pumice and ash—into the air, more than 100 times the amount produced by the Mount St. Helens eruption of 1980. The solids that resettled blanketed the valley below; those that didn't are thought to have contributed to a cooler climate throughout the Northern Hemisphere.

The eruption has long been credited with hastening the end of the ancient Maya civilization that flourished throughout Mexico and Central America. But a new study in the journal *Antiquity* suggests that the eruption didn't portend doom—at least not for an area only about 25 miles from the caldera. Instead, it enabled the swift construction of a massive Maya pyramid, a monumental structure that signaled the resilience of those who built it.

Read the article in its entirety - [National Geographic](#)



Michelle Sauther's Bushbaby Research Featured in CU Boulder Today.

Professor Sauther's study explored the yearly routine of the thick-tailed greater galago (*Otolemur crassicaudatus*) Bushbaby, discovering that females may be under a lot more stress than males.

The findings raise possible alarm bells for the conservation of greater galagos, sometimes called bushbabies, which are native to sub-Saharan Africa, and other primate populations across the globe—especially ones in which females carry the sole burden of raising offspring. The researchers, including anthropologist Michelle Sauther of CU Boulder, published their results Oct. 25 in the journal *Conservation Physiology*.

Read the entire article in [CU Boulder Today](#).

Will Taylor's Glacial Archaeology research featured in the New York Times.

As Earth Warms, Old Mayhem and Secrets Emerge From the Ice. Climate change is revealing long-frozen artifacts and animals to archaeologists. But the window for study is slender and shrinking. Read the entire article in the [New York Times](#).



Welcome Alyssa Bader

We are pleased to welcome our new post-doctoral researcher, Dr. Alyssa Bader (Tsimshian), received her doctorate in anthropology from the University of Illinois. Her research on diet and the oral microbiome in collaboration with First Nations communities in British Columbia, Canada and Native Alaskans integrates archaeological, bioarchaeological, biochemical, and biomolecular methodologies. She is interested in the ethics of paleogenomic research, as well as biological anthropology research with Indigenous communities more broadly. We're excited to have her!



Donna Goldstein

2021. Goldstein, Donna and Hall, Kira. [Darwin's Hug: Ideologies of Gesture in the Science of Human Exceptionalism](#). Journal of Ethnographic Theory.

Carole McGranahan

2021. McGranahan, Carole and Weiss, Erica. [Rethinking Pseudonyms in Ethnography: An Introduction](#). American Ethnological Society.



Bert Covert Retires

It is with bittersweet feelings that we announce the retirement of Professor Bert Covert after 35 years in the Anthropology Department. While we will miss his kind and generous nature, we look forward to

seeing what adventures await him and his wife, Sherri, in retirement. Best wishes from all of us, Bert!



**Gregg Ortiz
(PhD Anthropology 2021)**

Alumni (Ph.D. 2021), Gregg Ortiz, accepts a director position with CCS Fundraising. CCS is a strategic fundraising consulting firm that partners with nonprofits to raise funds and strengthen organizations.

**Emily Hite
(PhD Anthropology 2021)**

Alumni (Ph.D. 2021), Emily Hite receives National Science Foundation Postdoctoral Research Fellow (2021-2023) working in affiliation with Northern Arizona University. Her project is titled, "Hydrosocial territories of climate governance: an interdisciplinary examination of the Indigenous-hydropower nexus." Her research is broadly focused on understanding hybrid human-water interactions within hydrosocial territories, specifically engaging with the confrontation between Indigenous rights and hydropower development as they intersect within the context of climate governance. In order to address issues of justice and equity across multilateral scales of governance, she conducts mixed methods, ethnographic research at climate and hydropower conferences (where policy decisions are orchestrated) and in local Indigenous communities (where policies are implemented and resisted). This fall she conducted event ethnography at numerous virtual conferences and at COP26 in Scotland, and I am working with dam-impacted Indigenous communities in the Western US.



Global Seminar in Mexico with Professor Art Joyce
May 14-28, 2022

Mexico
Exploring Ancient Mexican Peoples & Ruins

- Visit archaeological sites including the ancient mountain-top city of Monte Albán, the tombs of Monte Albán, the hilltop fortress at Yagul, & the Queen's palace of Tepeacalula.
- Learn about the pre-Columbian history of Mexico including the origins of agriculture, early village life, hieroglyphic writing and sacred history.
- Travel throughout the southern Mexican state of Oaxaca from highland valleys to the tropical Pacific coast and experience the languages, customs, art, and culture of Oaxaca's Indigenous peoples.

Global Seminar
faculty-led

3
credits

2
weeks

May
term

Taught by Arthur Joyce
CU Department of Anthropology
arthur.joyce@colorado.edu

Apply by February 1st

Find all the program details here:

Connect with Education Abroad!

Monday-Friday 9-4:30pm
3rd floor C4C & virtual advising
abroad.colorado.edu/?go=ContactUs

Education Abroad
UNIVERSITY OF COLORADO BOULDER

[Global Seminar in Vietnam](#) with Jonathan O'Brien

abroad.colorado.edu/?go=VietnamGS | Herbert.Covort@colorado.edu | jonathan.obrien@colorado.edu

Why study anthropology in Vietnam?

Unsustainable human activities are causing an extinction crisis for a wide variety of life forms. Vietnam is a rapidly developing country where economic gains are often prioritized over environmental protection, and many of its endangered plants and animals are at risk of extinction. Vietnam is at a crossroads where it needs to seek a balance between development and conservation.

What is this course approved for?

ANTH 3770
A&S Gen Ed Natural Science

What are the excursions?

Seigon Zoo
Reunification Palace
Cat Tien National Park; Dao Tien Primate Center & Bau Sau Wetlands
Southern Institute of Ecology
Can Gio Mangrove Biosphere Reserve
Son Tra Nature Reserve
Hoi An, UNESCO World Heritage Site

Am I eligible?

This program is open to CU Boulder students of all majors

Who are the faculty directors?

Dr. Herbert Covort
Dr. Jonathan O'Brien
Department of Anthropology


How do I get started?

Connect with Education Abroad!
Monday-Friday 9:00-4:30
C4C S355
globalseminars@colorado.edu


Education Abroad
UNIVERSITY OF COLORADO BOULDER

Vietnam

Primates of Vietnam



- Discover the biodiversity of Vietnam by exploring the flora and fauna of national parks, biosphere reserves, zoos, and more
- Visit historical sites, including museums, palaces, and preserved seaports
- Enjoy Vietnam's world-famous street foods and coffee culture




Global Seminar
faculty-led

3
credits

3
weeks


May
term

[Field School](#) with Professor Doug Bamforth
Summer Session A - May 31 through July 1



Anthropology
UNIVERSITY OF COLORADO BOULDER

ANTHROPOLOGY 4350/4390 Field School



A field school is required for a job or grad study in archaeology... It's also an amazing and memorable experience that you will carry with you for a lifetime. This summer go to Lynch, Nebraska, to uncover a mile long Plains Village site. Help to study the emergence of the Pawnee and Arikara nations and to answer questions surrounding how people adapted to rapidly changing environments and forged new societies in the midst of massive social disruption. Learn field techniques necessary to carry out an excavation and camp out under the stars as you see what it takes to become a real archaeologist.

Support

The Anthropology Department is greatly appreciative of our alumni and friends for their financial support over the years. Your contribution will go toward supporting scholarships and awards to many of our worthy graduate students and the department as a whole. Contributions of any size make a significant difference in the lives of our students and faculty to conduct research around the world on a variety of exciting topics.

Your gift to the Anthropology Department can take many different shapes. The information below highlights many of the different funding opportunities our department has to meet your desired funding goals and the impacts you want to make. The CU Foundation can also assist you with your needs, be they for targeted or unrestricted programs.

If you would like to support the academic endeavors of the Department of Anthropology, please see the giving section of our website: <https://www.colorado.edu/anthropology/donate>



SEND US YOUR NEWS

[Alumni Updates](#)

FOLLOW US ON SOCIAL MEDIA

 [Anthropology Facebook](#)

 [Anthropology Instagram](#)

 [Anthropology Twitter](#)

 [CU Boulder Anthropology Website](#)



Anthropology

UNIVERSITY OF COLORADO **BOULDER**

Email: anthro@colorado.edu | Phone: 303-492-2547 | Fax: 303-492-1871
Address: 233 UCB, Boulder, CO 80309

