

A SCENARIO FOR A NATURAL ORIGIN OF OUR UNIVERSE USING A MATHEMATICAL MODEL BASED ON ESTABLISHED PHYSICS AND COSMOLOGY

Victor J. Stenger

Abstract: A mathematical model of the natural origin of our universe is presented. The model is based only on well-established physics. No claim is made that this model uniquely represents exactly how the universe came about. But the viability of a single model serves to refute any assertions that the universe cannot have come about by natural means.

Why is there something rather than nothing? This question is often the last resort of the theist who seeks to argue for the existence of God from physics and cosmology and finds that all his other arguments fail. Philosopher Bede Rundle calls it “philosophy’s central, and most perplexing, question.” His simple (but book-length) answer: “There has to be something.”¹

Clearly many conceptual problems are associated with this question. How do we define “nothing”? What are its properties? If it has properties, doesn’t that make it something? The theist claims that God is the answer. But then why is there God rather than nothing? Assuming we can define “nothing,” why should nothing be a more natural state of affairs than something? In fact, we can give a plausible scientific reason based on our best current knowledge of physics and cosmology that something is more natural than nothing.

It is commonly believed that the universe cannot have come about naturally. Although many authors writing at both the popular and academic levels have described various scenarios for a natural origin, usually based on the vague notion of “quantum fluctuations,” even they admit that their ideas are speculative and surrender to the prevailing wisdom that the origin of our universe remains unexplained.²

What is it that science does when it “explains” some phenomenon? At least in the case of the physical sciences, it builds a mathematical model to

describe the empirical data associated with the phenomenon. When that model works well in fitting the data, has passed a number of risky tests that might have falsified it, and is at least not inconsistent with other established knowledge, then it can be said to successfully explain the phenomenon. Further discussion on what the model implies about “truth” or “ultimate reality” falls into the area of metaphysics rather than physics, since there is nothing further the scientist can say based on the data. What is more, nothing further is needed for any practical applications. For example, not knowing whether or not electromagnetic fields are real does not prevent us from utilizing the theory of electromagnetic fields.

We have no direct observations of the event we identify as the origin of our universe (“our universe” being the one we live in but with the far greater portion that arose from the same source now out of sight beyond our horizon). This has led some to insist that as a consequence science can say nothing about the origin. Here they parrot the familiar creationist argument that because we did not observe humans evolving we can’t say anything about human evolution.

But of course science can and does talk about unobserved and unobservable events. We have plenty of indirect data by which we can test human evolution. We can reconstruct crimes from forensic evidence. In the case of the universe, the inflationary big-bang model nicely accounts for a wide range of increasingly precise observations that bear on the nature of the early universe.³ When we extrapolate the model back to the earliest moments, we find that the picture becomes surprisingly simple. Assuming the universe came from nothing, it is empty to begin with; so we do not have to deal with the complications of matter and its interactions of which we have only incomplete understanding. In fact, to understand an empty universe, we need only apply general relativity and quantum mechanics, theories that have enjoyed almost a century of empirical corroboration.

What I will show is that a mathematical model of the origin of our universe based on no more than these well-established theories can be precisely specified. This model is essentially the “no-boundary” model proposed over twenty years ago by Hartle and Hawking.⁴ I will present a simplified version, following closely the development of Atkatz in his excellent pedagogical review of quantum cosmology.⁵ More details are given in the mathematical supplement of my 2006 book, *The Comprehensible Cosmos*, which can also be referred to for a layperson’s discussion.⁶ The mathematics used is about at the level of a bachelor’s degree in physics from an American university. A pedagogical discussion along the same lines can also be found in the paper by Norbury.⁷

No claim will be made that the model I will describe is actually how our universe actually came about. The model contains no proof of uniqueness. The purpose of this essay is simply to show explicitly that at least one scenario exists for a perfectly natural, non-miraculous origin of our universe based on our best scientific knowledge. In other words, science has at least one viable explanation for the wholly natural origin of our universe, thus refuting any claim that a supernatural creation was required.

1. THE WAVE FUNCTION OF THE UNIVERSE

Although we do not yet have a complete theory that unites quantum mechanics and general relativity, nothing prevents us from attempting to combine the two. Consider the Lagrangian

$$L = \frac{3\pi}{4G} \left[- \left(\frac{da}{dt} \right)^2 a + a \left(1 - \frac{a^2}{a_0^2} \right) \right] \quad (1)$$

where a is some coordinate in one dimension and G is Newton's gravitational constant. This looks rather arbitrary but is chosen in hindsight. The canonical momentum conjugate to a is

$$p = \frac{\partial L}{\partial \left(\frac{da}{dt} \right)} = - \frac{3\pi}{2G} a \frac{da}{dt} \quad (2)$$

The Hamiltonian then is

$$\begin{aligned} H &= p \frac{da}{dt} - L \\ &= \frac{3\pi}{4G} a \left[1 + \left(\frac{da}{dt} \right)^2 - \frac{a^2}{a_0^2} \right] \end{aligned} \quad (3)$$

Consider the case where $H = 0$. Then

$$1 + \left(\frac{da}{dt} \right)^2 - \frac{a^2}{a_0^2} = 0 \quad (4)$$

This is precisely one of the Friedmann equations of cosmology that can be derived from Einstein's theory of general relativity:

$$\left(\frac{da}{dt} \right)^2 - \frac{8\pi\rho Ga^2}{3} = -k \quad (5)$$

where a is the radial scale factor of the universe $a_0^2 = \frac{3}{8\pi\rho G}$, ρ is the energy density ($c=1$), and k is the parameter indicating whether the universe is open ($k=-1$), critical ($k=0$), or closed ($k=1$). Here $k=1$, indicating a closed universe.

If the universe is empty, then $\rho = \frac{\Lambda}{8\pi G}$, where Λ is the cosmological constant, and thus $a_0^2 = \frac{3}{\Lambda}$ is constant. In this case, the scale factor varies with time as

$$a(t) = a_0 \cosh \left(\frac{t}{a_0} \right) \quad a > a_0 \quad (6)$$

where the origin of our universe is at $t=0$. Nothing forbids us from applying this for earlier times. For $t < 0$ the universe contracts, reaching a_0 at

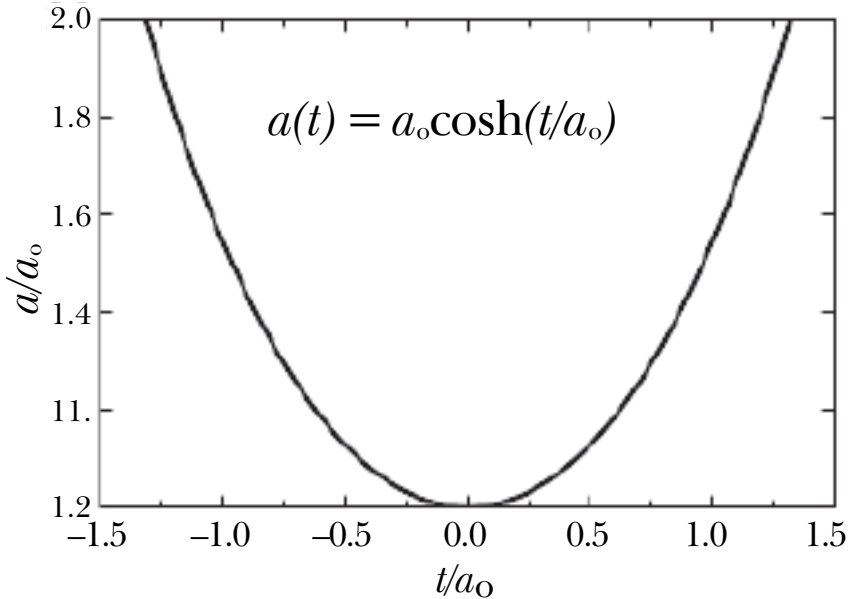


Figure 1. The solution of Friedmann's equation for an empty universe with $k=1$. The region $t < 0$ is not forbidden by any known principle.

$t = 0$. Thereafter it expands very rapidly providing for what is called *inflation* (see Figure 1). Note that the scale factor is never smaller than a_0 .

While not precisely the exponential usually associated with inflationary cosmology, which occurs when $k = 0$, it amounts to the same thing. The fact that $k = 1$ may seem to contradict the familiar prediction of inflationary cosmology that $k = 0$, that is, that the universe is flat. Actually, a highly flat universe is still possible with $k = 1$. Such a universe is simply very large, like a giant inflated balloon, with the part within our horizon simply a tiny patch on the surface. It eventually collapses in a “big crunch” but so far in the future that we can hardly speculate about it except to conjecture that maximum entropy or “heat death” is likely to happen before the collapse is complete. Models for a closed universe exist that are consistent with all current data.⁸ In fact, now that we know the universal expansion is accelerating, such models are even more viable.

Now, let us write the Friedmann equation

$$p^2 + \left(\frac{3\pi}{2G}\right)^2 a^2 \left(1 - \frac{a^2}{a_0^2}\right) = 0 \quad (7)$$

This is a classical physics equation. We can go from classical physics to quantum physics by means of *canonical quantization* in which we replace the momentum p by an operator:

$$p = -i \left(\frac{d}{da}\right) \quad (8)$$

($\hbar = 1$) and introduce a wave function ψ , where $H\psi = E\psi$, and $E = 0$.

$$\left[\frac{d^2}{da^2} - \left(\frac{3\pi}{2G} \right)^2 a^2 \left(1 - \frac{a^2}{a_0^2} \right) \right] \psi = 0 \quad (9)$$

This is a simplified form of the *Wheeler-DeWitt equation*, where ψ is grandly referred to as the *wave function of the universe*. Using the conventional statistical interpretation of the wave function, $|\psi(a)|^2 da$ represents the probability of finding a universe in an ensemble of universes with a in the range a to $a + da$.

In general, the wave function of the universe described by the Wheeler-DeWitt equation is a function of functions (that is, it is a *functional*) that specifies the geometry of the universe at every point in three-dimensional space, with time puzzlingly absent as a parameter. Here we consider the situation where the geometry can be described by a single parameter, the radial scale factor a . This should be a reasonable approximation for the early universe and greatly simplifies the problem. Note that zero energy is consistent with the universe coming from “nothing,” which presumably has zero energy, without violating energy conservation. In fact, current cosmological observations indicate that the average density of matter and energy in the universe is equal, within measurement errors, to the critical density for which the total energy of the universe was exactly zero at the beginning.

2. QUANTUM TUNNELING

Mathematically speaking, the Wheeler-DeWitt equation in this case is simply the time-independent Schrödinger equation for a non-relativistic particle of mass $m = 1/2$ (in units inverse to the units of a) and zero total mechanical energy, moving in one dimension with coordinate a in a potential

$$V(a) = \left(\frac{3\pi}{2G} \right)^2 a^2 \left(1 - \frac{a^2}{a_0^2} \right) \quad (10)$$

This potential is shown in Figure 2. Note that it includes the region $a < a_0$.

The mathematical solution of the Friedmann equation for this region is

$$a(\tau) = a^2 \cos \left(\frac{\tau}{a_0} \right) \quad 0 < a < a_0 \quad (11)$$

where τ is a real number and the “time” $t = i\tau$ is an imaginary number. Thus, the region $a < a_0$ cannot be described in terms of the familiar operational time, which is a real number read off a clock. This is an “unphysical” region, meaning it is a region not amenable to observation. However, meaningful results can still be obtained when our equations are extended into the physical region.

This is a common quantum mechanical procedure, as in the familiar

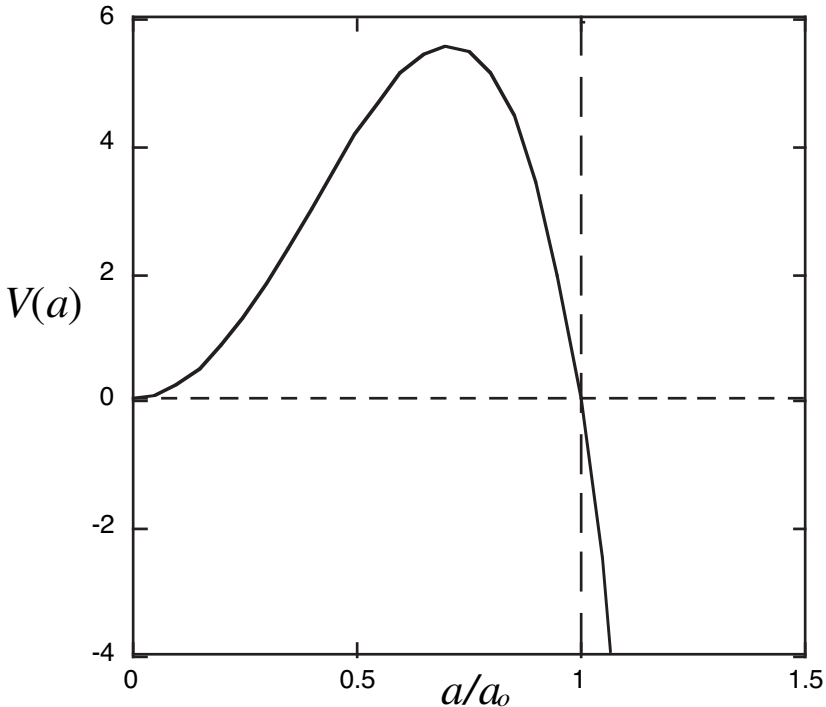


Figure 2. The potential energy in the Wheeler-DeWitt equation. The vertical scale is in units of $\left(\frac{3\pi}{2G}\right)^2$.

problem of tunneling through a square barrier (see Figure 3). Inside the barrier the wave function is

$$\psi(x, t) = Ce^{i(px-Et)} + De^{i(-px-Et)} \quad -b/2 < x < b/2 \quad (12)$$

where $p = i[2m(V-E)]^{1/2}$ is an imaginary number. Using imaginary time is analogous to using imaginary momentum in this case.

The probability for tunneling through a square barrier, found in textbooks, is

$$P = \exp\{-2[2m(V-E)]^{1/2}b\} \quad (13)$$

The potential in the Wheeler-DeWitt equation resembles the kind of potential barriers encountered for example in nuclear physics where α -decay is explained as a quantum tunneling process. A variable barrier $V(x)$ in the range $x_1 < x < x_2$ can be treated as a sequence of infinitesimal square barriers of the type above. The probability for transmission through the barrier will then be

$$P \approx \exp\left\{-2 \int_{x_1}^{x_2} dx 2m|V(x) - E|^{1/2}\right\} \quad (14)$$

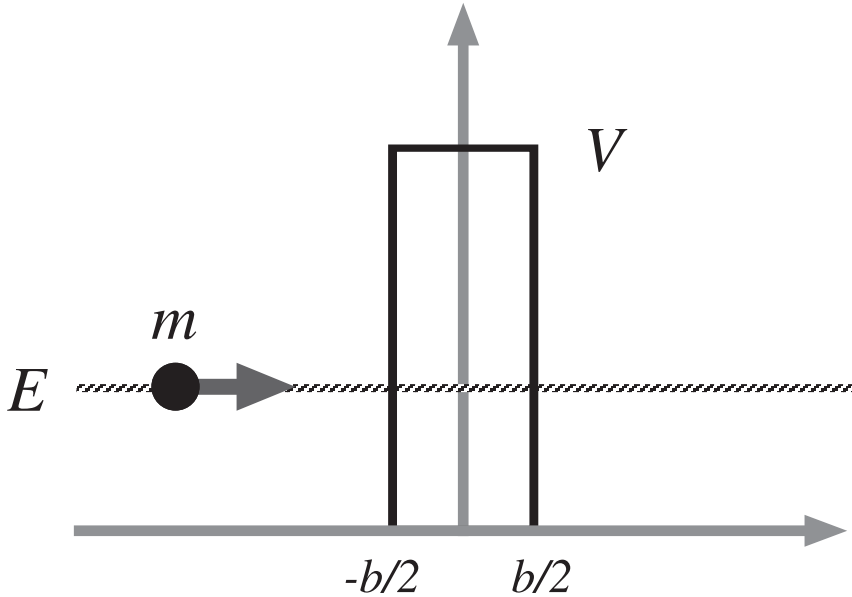


Figure 3. A particle of mass m and energy E incident on a potential energy barrier of height V and width b . Quantum mechanics allows for particles to tunnel through the barrier with a calculable probability. The region inside the barrier is “unphysical,” that is, unmeasurable, with the particle’s momentum being an imaginary number.

Here, $2m = 1$, $E = 0$, $x_1 = 0$, and $x_2 = b = a_0$, so

$$P \approx \exp\left(-2 \int_0^{a_0} da K(a)\right) \tag{15}$$

where

$$K(a) = \left(\frac{3\pi}{2G}\right)^{1/2} a \left(\frac{a^2}{a_0^2} - 1\right)^{1/2} \tag{16}$$

The above integral can be shown to yield

$$P \approx \exp\left(-\frac{3}{8G^2\rho}\right) \tag{17}$$

At the earliest definable moment, the Planck time (1.61×10^{-43} second), we estimate from the uncertainty principle that ρ will be on the order of the Planck density, $\rho = 1/G^2 = 3 \times 10^{126}$ electron-volts per cubic centimeter. In that case, the tunneling probability is $\exp(-3/8) = 68.7$ percent. This suggests that the unphysical region is unstable and that 68.7 percent of all universes will be found in the physical state.

The region $a < a_0$ is a classically disallowed region that is allowed by quantum mechanics and described by a solution of the Wheeler-DeWitt

equation. The particular solution will depend on boundary conditions. In their no-boundary model, Hartle and Hawking propose equal amounts of incoming and outgoing waves, which Atkatz writes

$$\Psi_{HH}(a > a_0) = K(a)^{-1/2} \cos \left[\frac{\pi}{2} a_0^2 \left(\frac{a^2}{a_0^2} - 1 \right)^{3/2} \right] \quad (18)$$

$$\Psi_{HH}(a > a_0) = K(a)^{-1/2} \exp \left[\frac{\pi}{2} a_0^2 \left(1 - \frac{a^2}{a_0^2} \right)^{3/2} \right] \quad (19)$$

These solutions have been obtained using WKB approximation and do not apply for the regions around $a = 0$ and $a = a_0$. The wave function is shown in Figure 4, where I have extrapolated to zero at $a = 0$ and smoothly connected the inside and outside solutions at $a = a_0$.

3. INTERPRETATION

The simplified Hartle-Hawking model gives one possible scenario for the universe to come about naturally. In this picture, another universe existed prior to ours that tunneled through the unphysical region around $t = 0$ to become our universe. Critics will argue that we have no way of observing such an earlier universe and so this is not very scientific. However, the

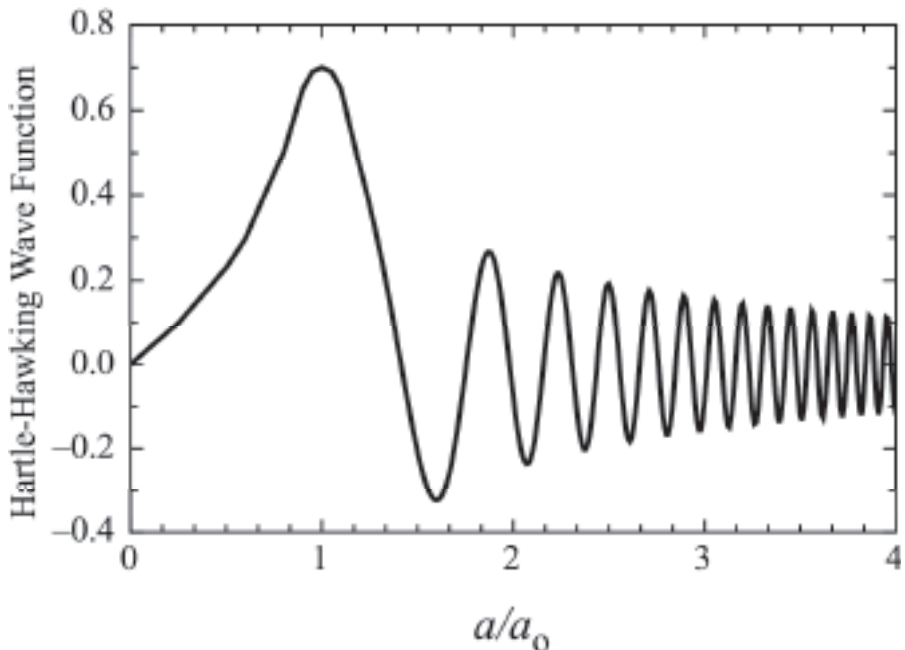


Figure 4. The Hartle-Hawking wave function of the universe.

model is based on well-established theories that make no distinction between the two sides of the time axis. Nothing in our knowledge of physics and cosmology requires the nonexistence of that prior universe, so it would be a violation of Occam's Razor to exclude it.

However, if you insist on no prior universe you can use an alternate solution to the same Schrödinger equation provided by Vilenkin in which the universe simply starts at $t = 0$. It is just a matter of setting a boundary condition.¹⁰ Vilenkin interprets his solutions as tunneling from "nothing," where he takes the classically unphysical region $a < a_0$ to represent nothing.

While not crucial to our scenario of a natural origin for our universe, it is interesting to note that the earlier universe in the Hartle-Hawking case is only earlier from our point of view, where the arrow of time points away from the big bang in the direction of increased entropy. Our sister universe will have an arrow of time pointing opposite to ours since that is the direction of increased entropy on the negative side of the time axis. The two universes then are mirror images of one another, both emerging simultaneously from the same point in space and time. They are not likely to be identical however since we expect from our current models of cosmology and particle physics that random processes play a major role in the development of structure.

This scenario then provides another way of looking at the origin of the universe. Two universes "begin" in the unphysical region around $t = 0$ that Vilenkin calls "nothing." These universe then evolve along the opposite directions of the time axis.

4. HOW CAN SOMETHING COME FROM NOTHING?

Nature is capable of building complex structures by processes of self-organization; simplicity begets complexity. Consider the example of the snowflake. Our experience tells us that a snowflake is very ephemeral, melting quickly to drops of liquid water that exhibit far less structure. But that is only because we live in a relatively high temperature environment, where heat reduces the fragile arrangement of crystals to a simpler liquid. Energy is required to break the asymmetry of a snowflake.

In an environment where the ambient temperature is well below the melting point of ice, as it is in most of the universe far from the highly localized effects of stellar heating, any water vapor would readily crystallize into complex, asymmetric structures. Snowflakes would be eternal, or at least would remain intact until cosmic rays tore them apart.

What this example illustrates is that many simple systems of particles are unstable, that is, have limited lifetimes as they undergo spontaneous phase transitions to more complex structures of lower energy. Since "nothing" is as simple as it gets, we would not expect it to be very stable. This is consistent with the estimate given above that a universe is about twice as likely to be found in the physical state than the unphysical state we are identifying with nothing. The unphysical state undergoes a spontaneous phase

transition to something more complicated, like a universe containing matter. The transition nothing-to-something is a natural one, not requiring any agent. As Nobel laureate physicist Frank Wilczek has put it, “The answer to the ancient question ‘Why is there something rather than nothing?’ would then be that ‘nothing’ is unstable.”¹¹

In short, the natural state of affairs is something rather than nothing. An empty universe requires supernatural intervention—not a full one. Only by the constant action of an agent outside the universe, such as God, could a state of nothingness be maintained. The fact that we have something is just what we would expect if there is no God.

University of Colorado at Boulder

NOTES

1. Bede Rundle, *Why There Is Something Rather than Nothing* (Oxford: Clarendon Press, 2004).

2. The original idea is usually attributed to E. P. Tryon, “Is the universe a quantum fluctuation?” *Nature* vol. 246 (1973): 396–397.

3. Alan Guth, “The Inflationary Universe: A Possible Solution to the Horizon and Flatness Problems,” *Physical Review* vol. D23 (1981): 347–356; Alan Guth, *The Inflationary Universe* (New York: Addison-Wesley, 1997); André Linde, “A New Inflationary Universe Scenario: A Possible Solution of the Horizon, Flatness, Homogeneity, Isotropy, and Primordial Monopole Problems,” *Physics Letters* vol. 108B (1982): 389–392; “Quantum Creation of the Inflationary Universe,” *Lettere al Nuovo Cimento* vol. 39 (1984): 401–405.

4. James B. Hartle and Stephen W. Hawking, “Wave Function of the Universe,” *Physical Review* vol. D28 (1983): 2960–2975.

5. David Atkatz, “Quantum cosmology for pedestrians,” *American Journal of Physics* vol. 62 (1994): 619–627.

6. Victor J. Stenger, *The Comprehensible Cosmos: Where Do the Laws of Physics Come From?* (Amherst, N.Y.: Prometheus Books, 2006).

7. John W. Norbury, “From Newton’s Laws to the Wheeler-DeWitt Equation,” *European Journal of Physics* vol. 19 (1998): 143–150.

8. Marc Kamionkowski and Nicolaos Toumbas, “A Low-Density Closed Universe,” *Physical Review Letters* vol. 77 (1996): 587–590.

9. B. S. DeWitt, “Quantum Theory of Gravity I: The Canonical Theory,” *Physical Review* vol. 160 (1967): 1113–1148; J.A. Wheeler, “Superspace and the nature of quantum geometrodynamics,” in C. DeWitt, and J.A. Wheeler, eds., *Battelle Rencontres: 1967 Lectures in Mathematics and Physics*, (New York: W.A. Benjamin, 1968).

10. Alexander Vilenkin, “Boundary conditions in quantum cosmology,” *Physical Review* vol. D33 (1986): 3560–3569. The Vilenkin wave function is given in *The Comprehensible Cosmos*.

11. Frank Wilczek, “The Cosmic Asymmetry between Matter and Antimatter,” *Scientific American* vol. 243, no. 6 (1980): 82–90.