

Click on any of the red boxes for explanatory information

DOE, JANE ASEN-2200-001-01 VEH DESIGN FOR ENGINEERS
 Dept: AEROSPACE ENGIN Forms requested: 83 Returned: 58 College: Engineering

Click here for information on A&S division, if applicable

Comparison information for department, college/division, and campus is for your instructor group and the course level ONLY, using Fall 2006, Spring 2007, and Fall 2007 data.

Group: TTT: Tenured and tenure-track Level: Lower division
 Sections in comparisons: Dept: 10 College/Division: 73 Campus : 726

Profile of your avg. ratings (with 95% confidence bands)

Item No.	Your rating		Diff from			Percentile in			Number of responses								Averages in								
	Avg.	Median	Dept	Col	Campus	Dept	Col	Campus	1	2	3	4	5	6	BL	SD	1	2	3	4	5	6	Dept	Col	Campus
2 Personal interest before enrolled	5.1	5.0	+++	+++	++	99	97	87	1	1	1	7	23	21	4	1.0									
3 Instr effectiveness encouraging interest	4.2	5.0	0	0	-	39	34	24	4	4	5	13	20	8	4	1.4									
4 Instr availability for assistance	4.4	5.0	-	-	--	39	28	14	1	4	8	10	21	9	5	1.3									
5 Intellectual challenge of course	5.0	5.0	0	+	+	50	78	76	0	0	3	8	27	16	4	0.8									
6 How much you learned in course	4.9	5.0	0	+	0	50	69	65	0	2	5	7	21	19	4	1.1									
7 Course overall	4.5	5.0	0	0	0	40	47	39	3	1	5	12	23	10	4	1.3									
8 Instructor overall	4.4	5.0	0	0	-	39	31	19	4	4	1	12	23	10	4	1.4									
9 Instr respect/professional treatment	5.8	6.0	0	0	0	59	41	40	0	1	0	1	5	43	8	0.7									
1 Hrs/week spent on course (incl class)	13-15	13-15	0	++	+++	29	89	97	0	3	5	13	17	11	9	1.1									

Hrs/week scale: 0-3=1, 4-6=2, 7-9=3, 10-12=4, 13-15=5, 16+=6

Optional questions

Optional questions	Avg. rating	Median	SD	Lowest				Highest				BL	NA
				1	2	3	4	5	6	7	8		
029 Students assumed responsibility for their learning	5.4	5.5	0.7	0	0	0	6	22	28	2	0		
031 Students learned by participation	4.6	5.0	1.2	1	1	10	9	24	11	2	0		
063 Course associated new with familiar content	4.7	5.0	1.2	0	3	7	10	21	14	2	1		
065 Course had appropriate prerequisites in catalogue	5.1	5.0	1.0	1	0	3	4	27	19	3	1		
069 Course objectives were achieved	4.8	5.0	1.2	1	4	3	5	28	15	2	0		
083 Text was relevant to teaching procedure	4.8	5.0	1.3	1	5	4	5	21	20	2	0		
088 Text for this course was: 1=too easy, 2=easy, 3=ok, 4=advanced, 5	3.5	3.0	0.7	0	2	27	22	5	0	2	0		
093 Lectures facilitated learning	4.2	5.0	1.4	3	5	6	13	21	7	2	1		
103 Lab work was worthwhile	4.5	5.0	1.4	4	2	5	6	27	12	2	0		
168 Grading criteria were well explained	4.2	4.5	1.4	4	4	7	13	18	10	2	0		
B91 This class improved my understanding of the engineering professio	4.8	5.0	1.3	2	4	1	10	19	19	3	0		
B92 My confidence to succeed as an engineering student was enhanced.	4.5	5.0	1.4	2	5	3	12	20	14	2	0		
B93 The instructor's preparation for class was...	4.9	5.0	1.2	2	1	3	10	21	19	2	0		
B94 This course prepared me for a career in engineering.	4.6	5.0	1.4	4	0	6	5	27	12	4	0		

For more info, see below and www.colorado.edu/fcq/stats

Standard item correlations

	2	3	4	5	6	7	8	9
1	.2	.1	.0	.1	.1	.1	.0	-.1
2		.4	.3	.3	.5	.5	.4	-.1
3			.6	.4	.8	.8	.9	.2
4				.3	.6	.6	.6	.1
5					.5	.3	.3	.1
6						.8	.7	.0
7							.8	.1
8								.3

Correlation coefficients range from -1.0 to 1.0, and indicate the direction and strength of the relationship between two items.

Occasionally some (but not all) correlations will be missing. This can happen if all students give the same rating on a particular item.

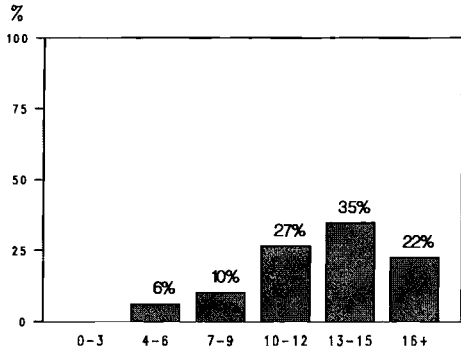
Median is the middle score when all ratings are rank-ordered. SD (standard deviation) is the DISagreement among raters. Difference from the group avg. for Dept, Col/Div, and Campus ranges from --- to +++. 0 = negligible difference. Percentile = percentile of your average rating within a particular group: campus, college/division, department. ** Percentiles not reported for groups with under 10 sections.

A confidence band indicates an interval within which we are 95% confident that the 'true' value of the average lies. See www.colorado.edu/fcq for details on all statistics, and for results from the last 7 years. Blank (BL) and non-applicable (NA) responses are tallied but excluded from averages.

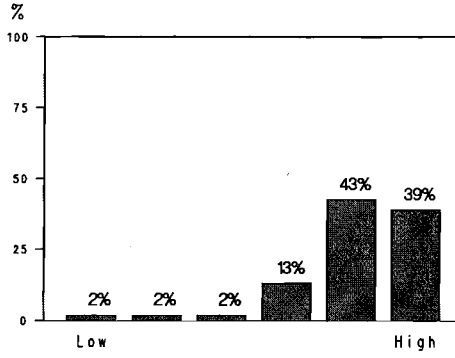
SEE GRAPHS ON REVERSE SIDE

Click on any of the red boxes for explanatory information

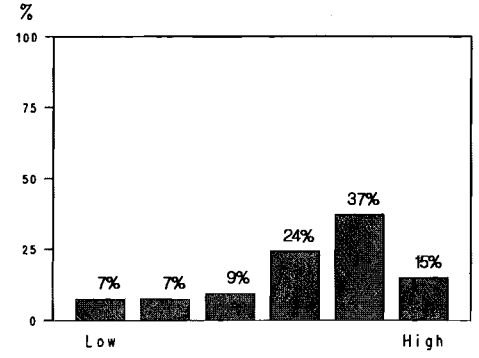
FCQ Results, Spring 2008, ASEN-2200-001 -- DOE, JANE



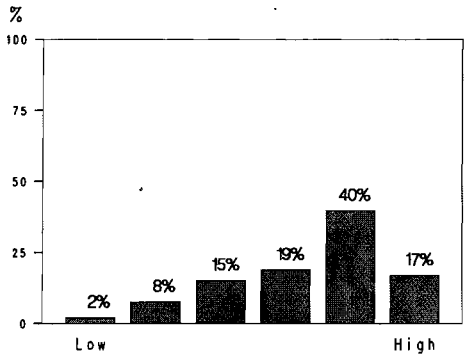
1: Hrs/Wk Spent on Course (Including Class)



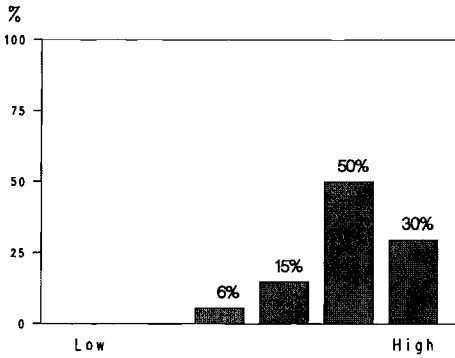
2: Prior Interest



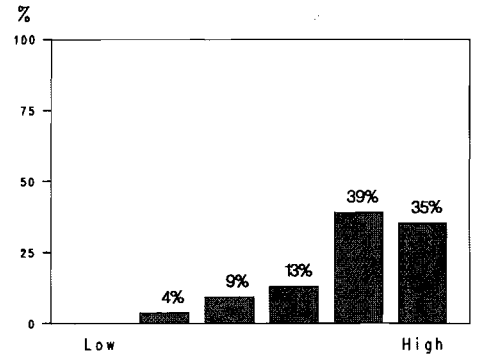
3: Instr Encourage Interest



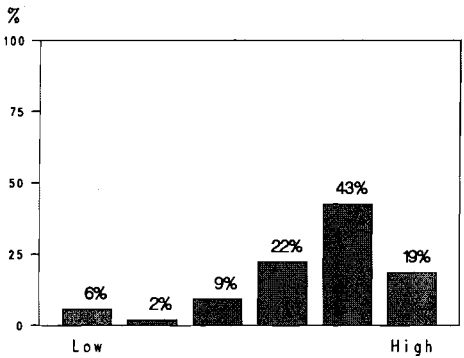
4: Instructor Avail for Ass't



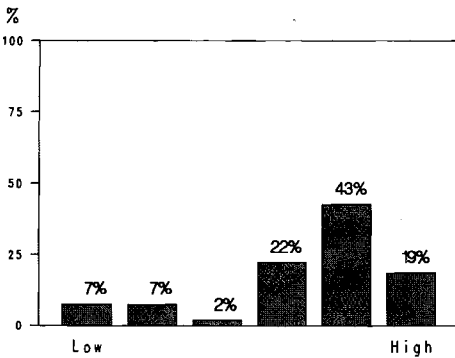
5: Intellectual Challenge



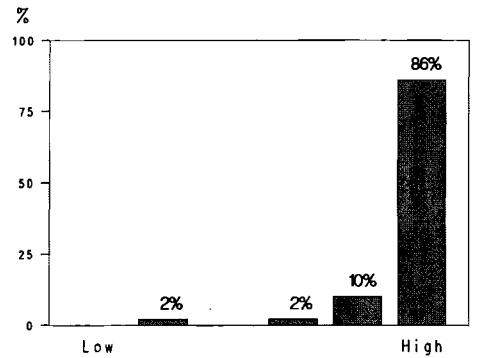
6: How Much Learned



7: Course Overall

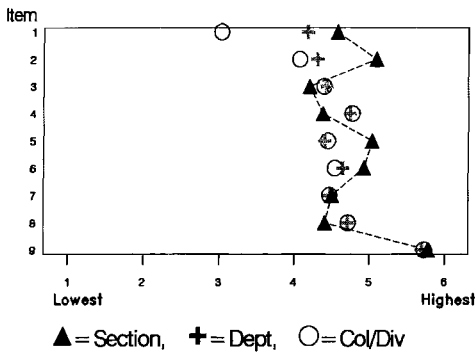


8: Instructor Overall

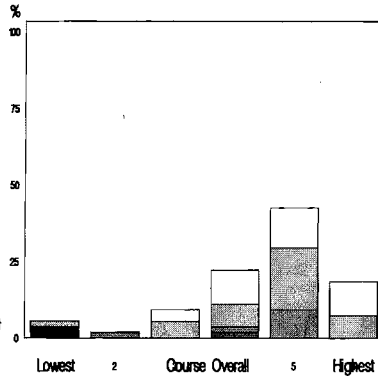


9: Instr Respect for Stdnts

Average Ratings Comparisons



Relationship of "Course Overall" ratings to Personal Interest before Enrolled



Key

Interest
6
5
4
3
2
1

Hours
16+
13-15
10-12
7-9
4-6
0-3

Relationship of "Course Overall" ratings to Hrs/Wk Spent on Course (Including Class)

