

# DESCRIBING AND PROJECTING THE AGE AND SPATIAL STRUCTURES OF INTERREGIONAL MIGRATION IN ITALY

James Raymer <sup>1</sup>

Alberto Bonaguidi <sup>2</sup>

Alessandro Valentini <sup>3</sup>

1. Division of Social Statistics, School of Social Sciences, University of Southampton, United Kingdom
2. Dipartimento di Statistica e Matematica Applicata all'Economia, Università di Pisa, Italy
3. Ricercatore Istituto Nazionale di Statistica, Italy

# The five divisions of Italy



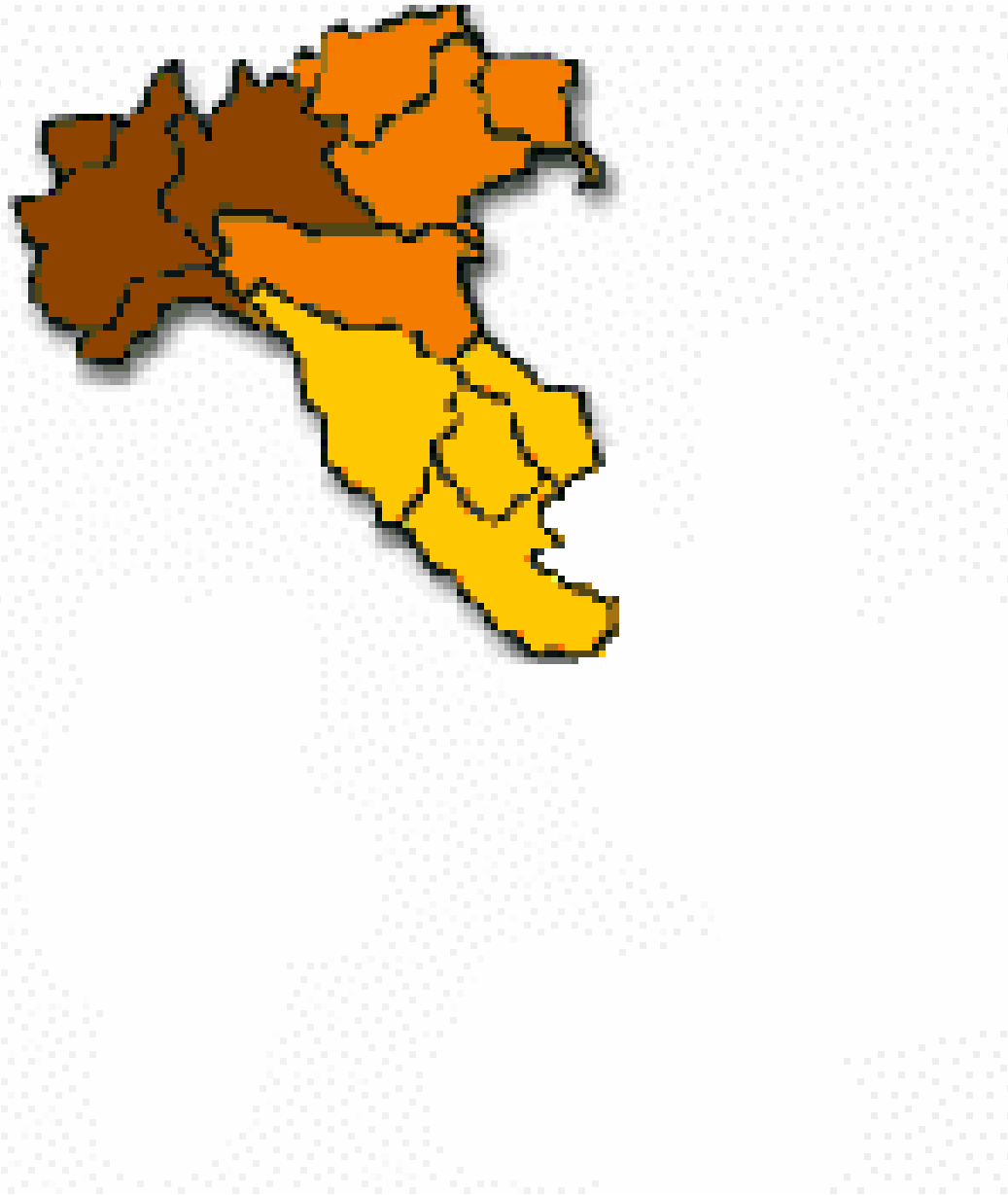
# Northwest



# Northeast



# Center



# South



# Islands

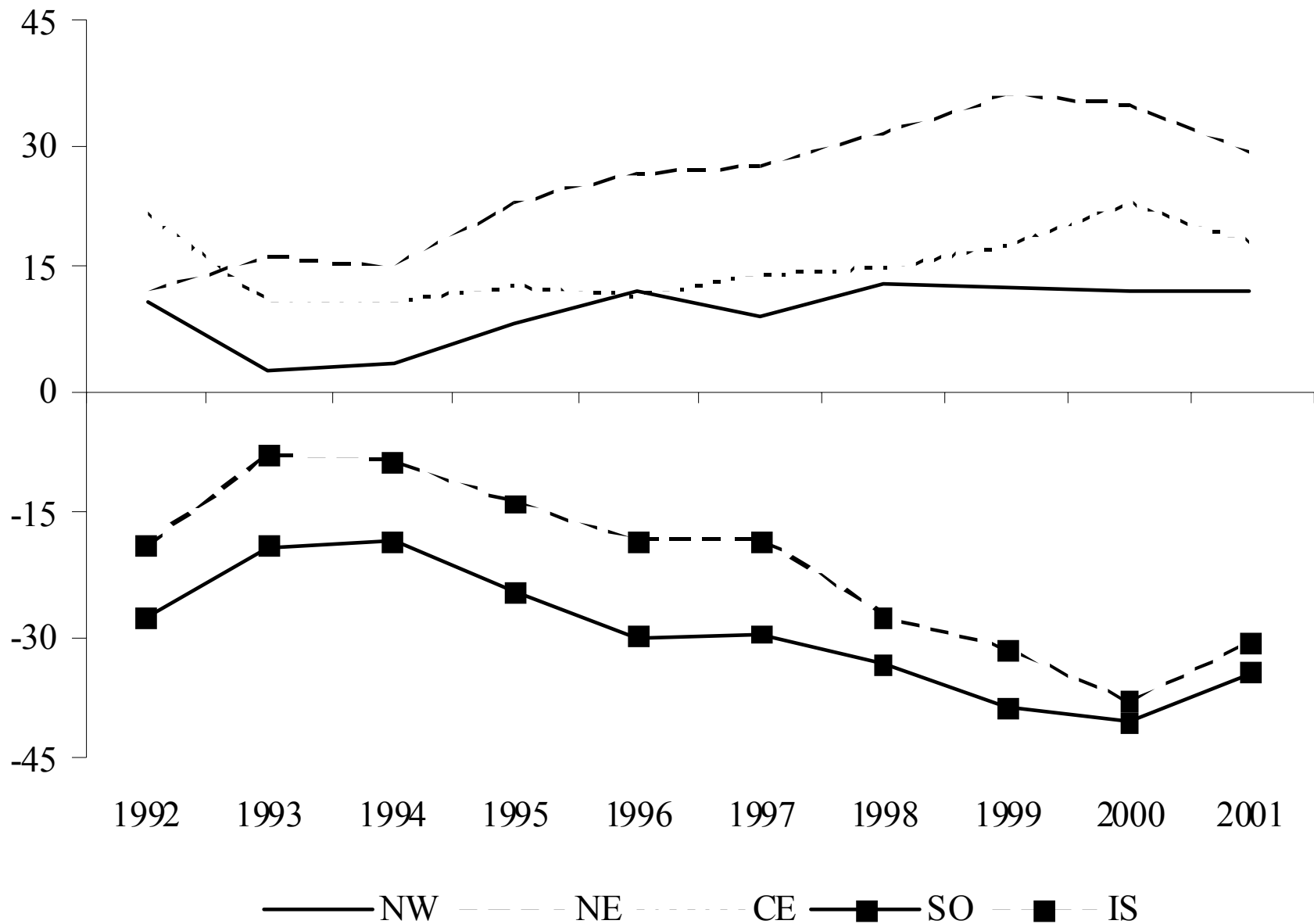


# Long term evolution of internal, long-distance migration in Italy

- 1950s and 1960s: massive flows to the Northwest from all country
- 1970s and 1980s: phase of decline in interregional migration
- 1990s: a new rise in interregional migration. The northeast has become the most attractive macro-region

Much interest in identifying and explaining the new trends in the interregional migration patterns in Italy

# Net migration rates (per 10,000) for the five Italian macro-regions, 1992-91 to 2001-02



# Migration data in Italy

- Registration and Census data
- Registration data have traditionally been largely privileged
- Implication in terms of approach, measures and methods of analysis

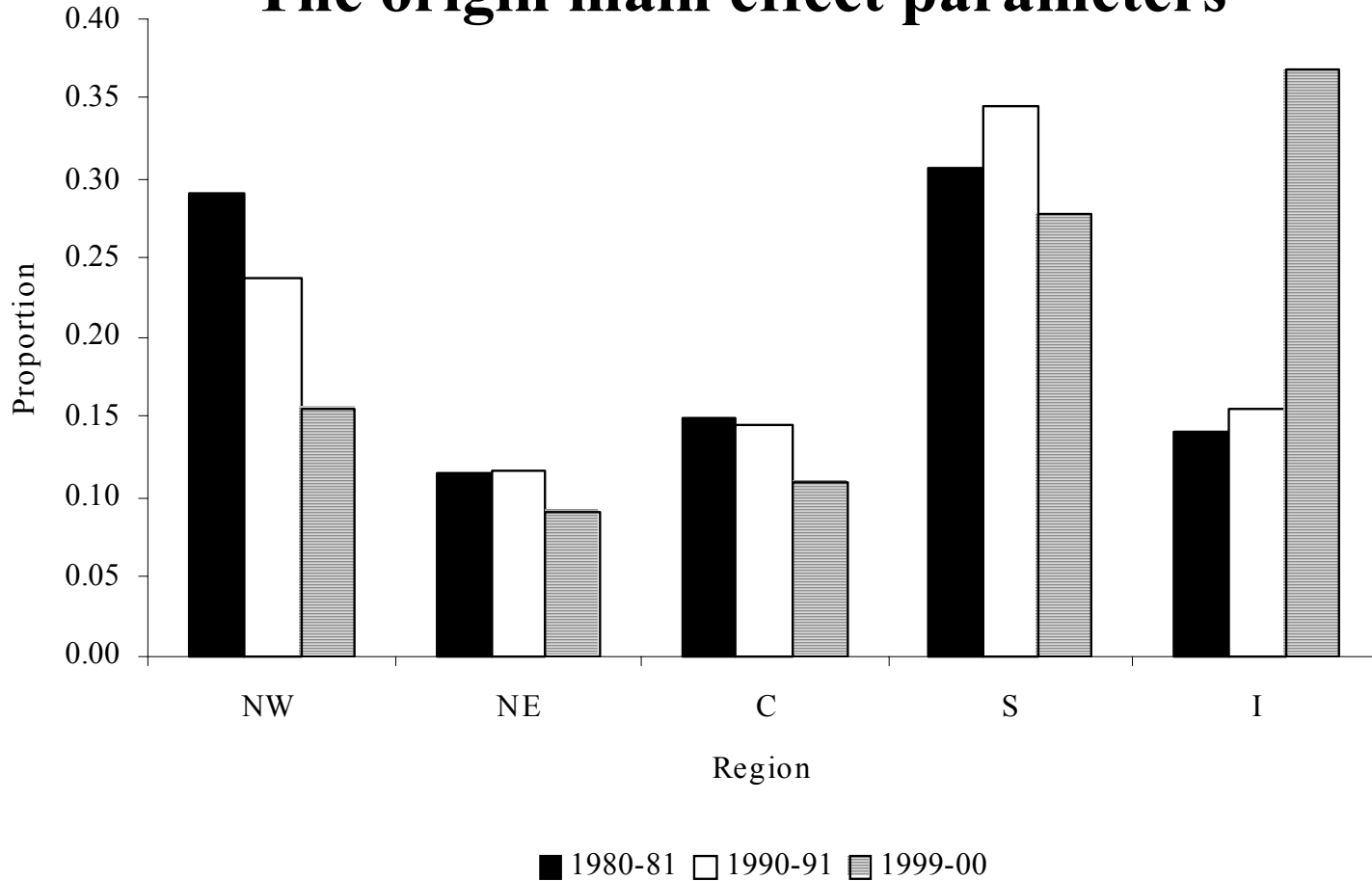
# **Main purposes of the paper**

- Describing the evolution in the age and spatial structures of internal long-distance migration from 1980-81 to 1999-2000.
- Projecting the age and spatial patterns forward (2010-2011).

# Approach

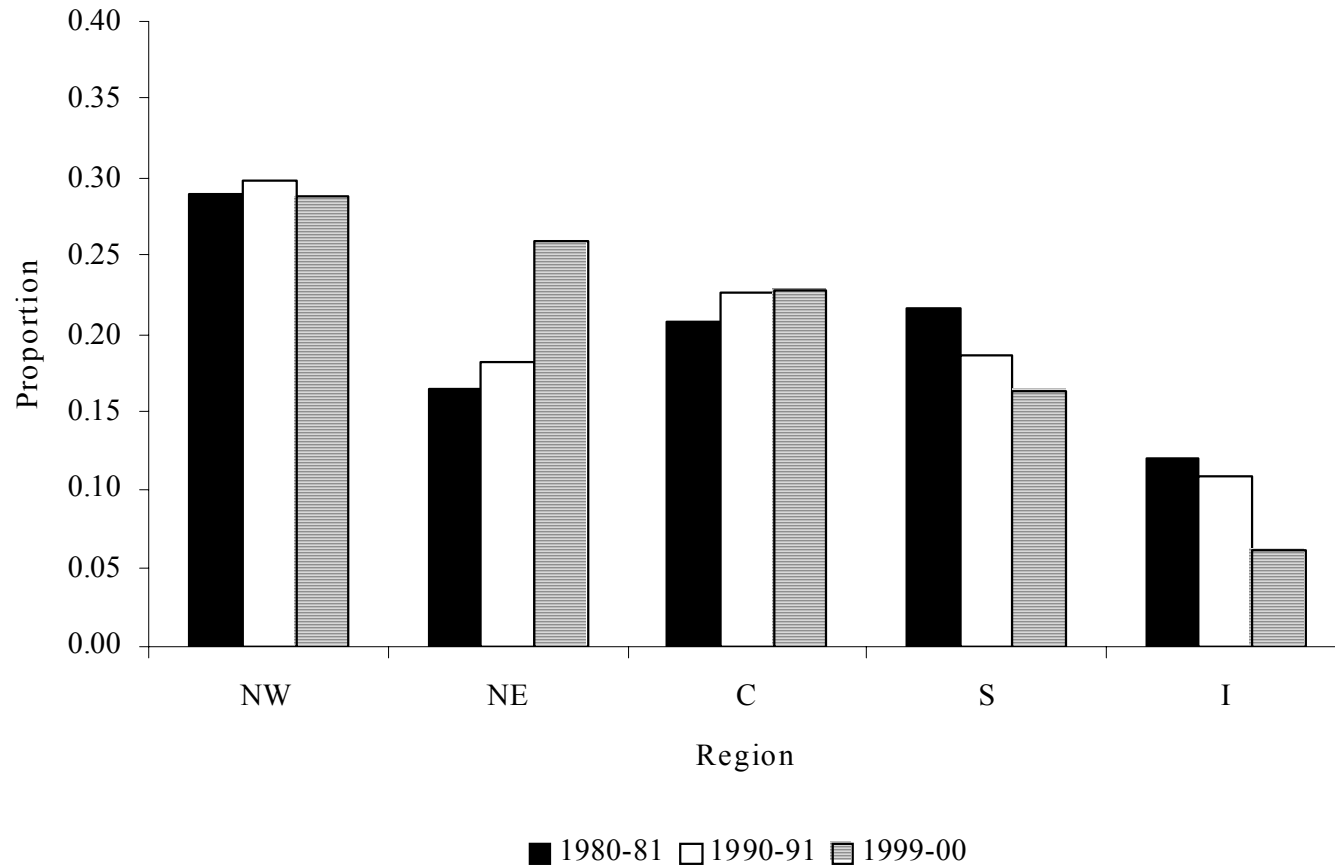
- Decomposition of the origin-destination-age specific migration by using a log-linear saturated model with an alternative reference coding scheme (Raymer 2004).
- Overall component
- Origin component
- Destination component
- Origin-Destination interaction component

## The origin main effect parameters



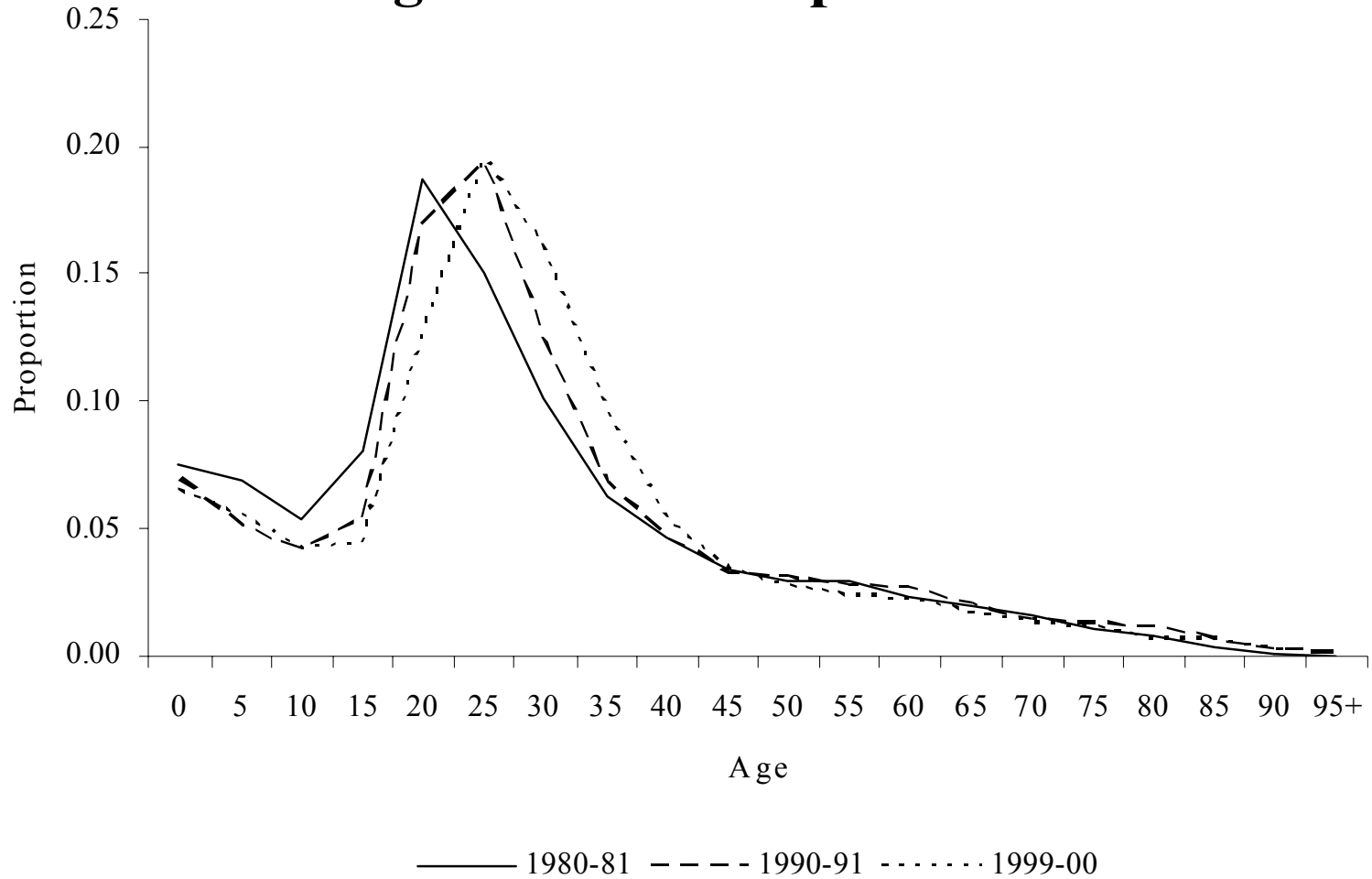
- Sharp decrease of the proportion from the Northwest
- Large increase of the proportions from the Islands

# The destination main effect parameters



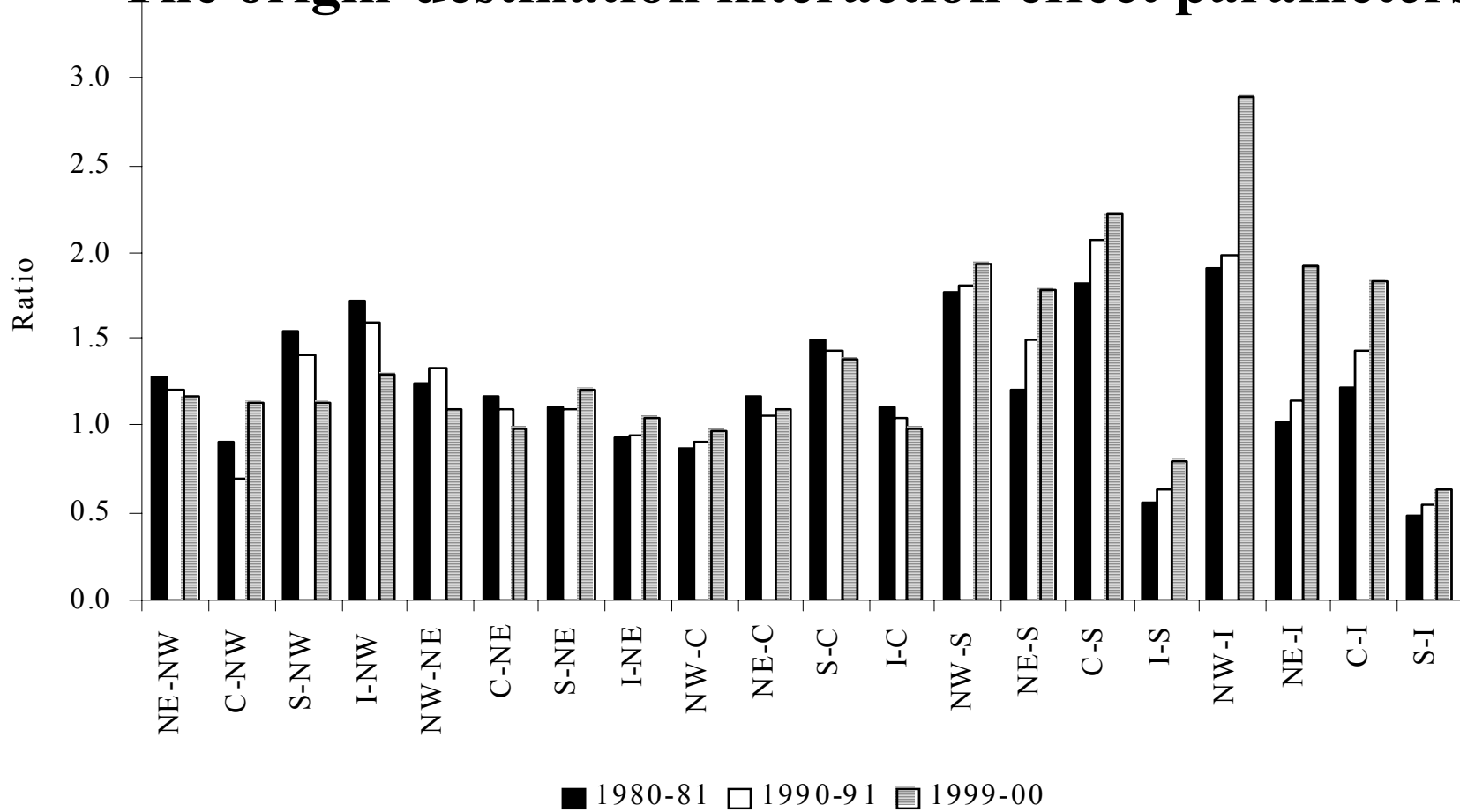
*Stable patterns* in the shares to the Northwest, *Increase* in the shares to the Northeast, *slight increase* in the share to the Center, *decline* in the shares to the South and Islands

# The age main effects parameters



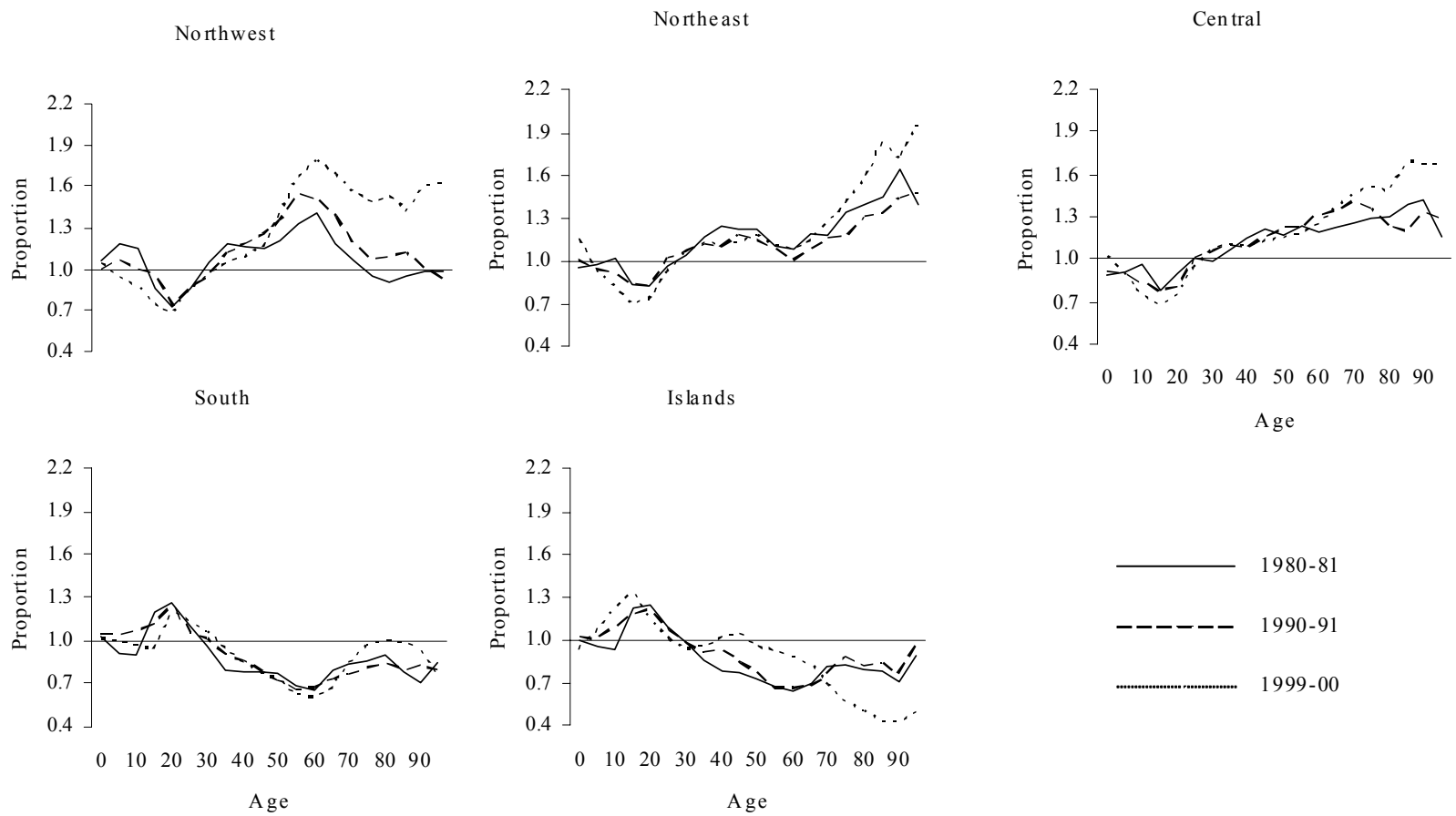
Shift on the labor force pick towards the right

# The origin-destination interaction effect parameters



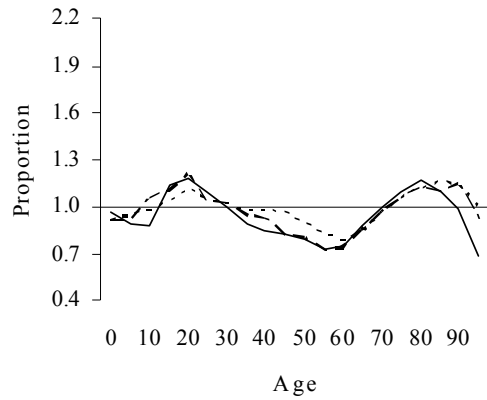
Steady increase in the interaction between all origins and the South and the Islands; in the South-Northeast, Islands-Northeast and Northwest-Center exchanges

# The origin-age interaction effect parameters

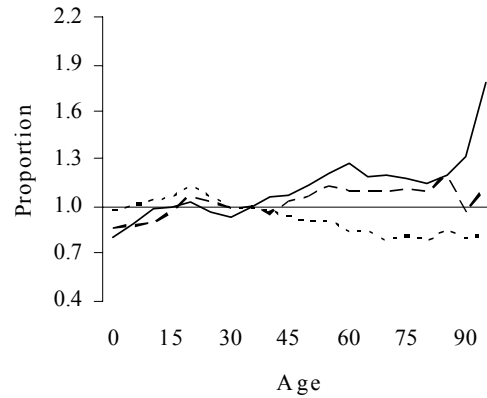


# The destination-age interaction effect parameters

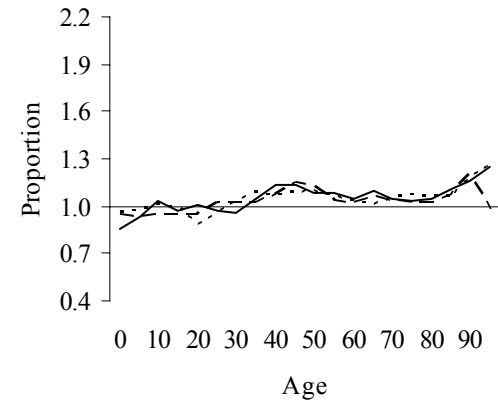
Northwest



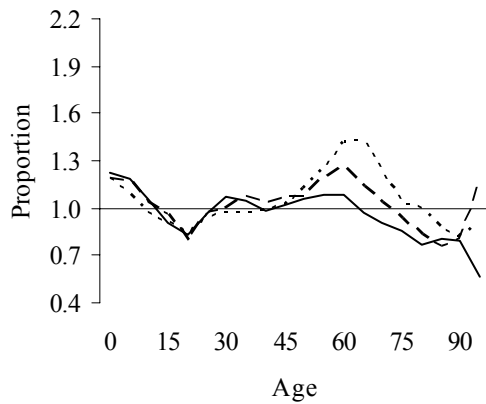
Northeast



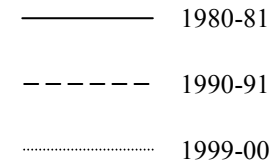
Central



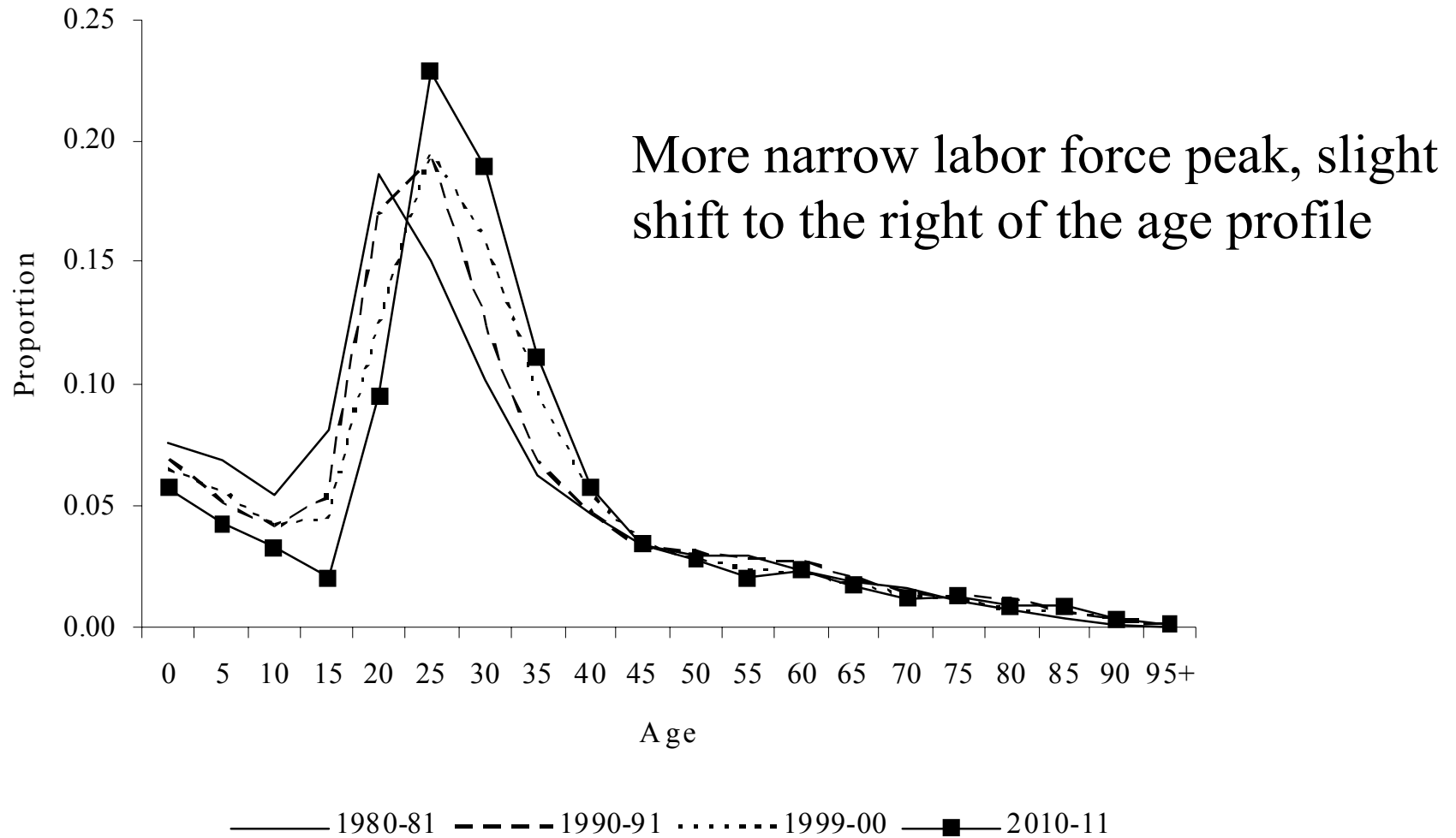
South



Islands

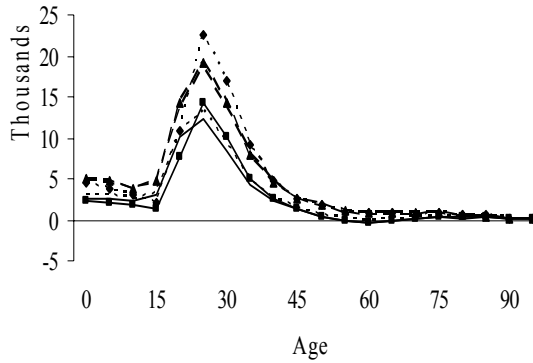


# The age main effect parameters: observed and projected

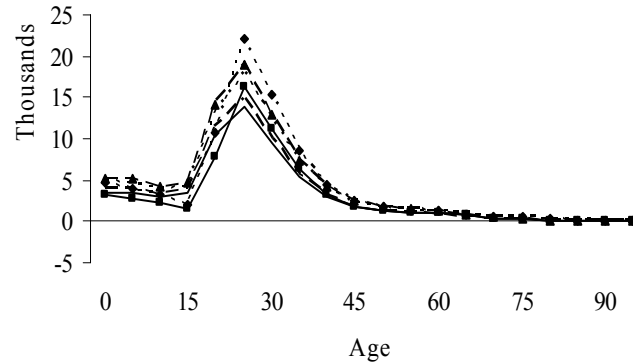


# Projected net migration in Italy according various scenarios

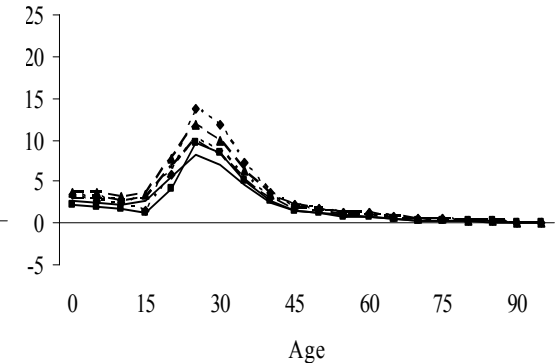
Northwest



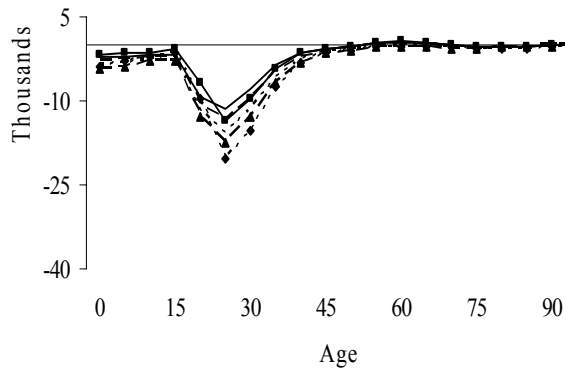
Northeast



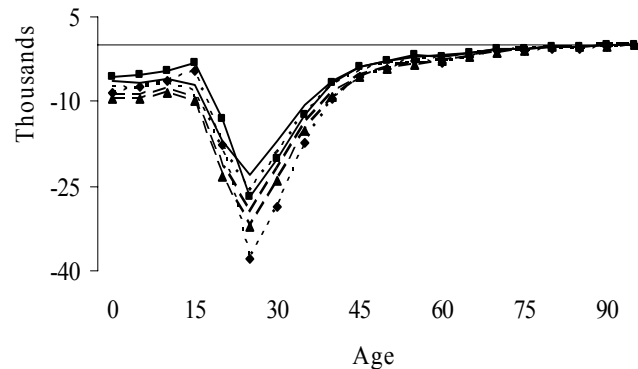
Centre



South

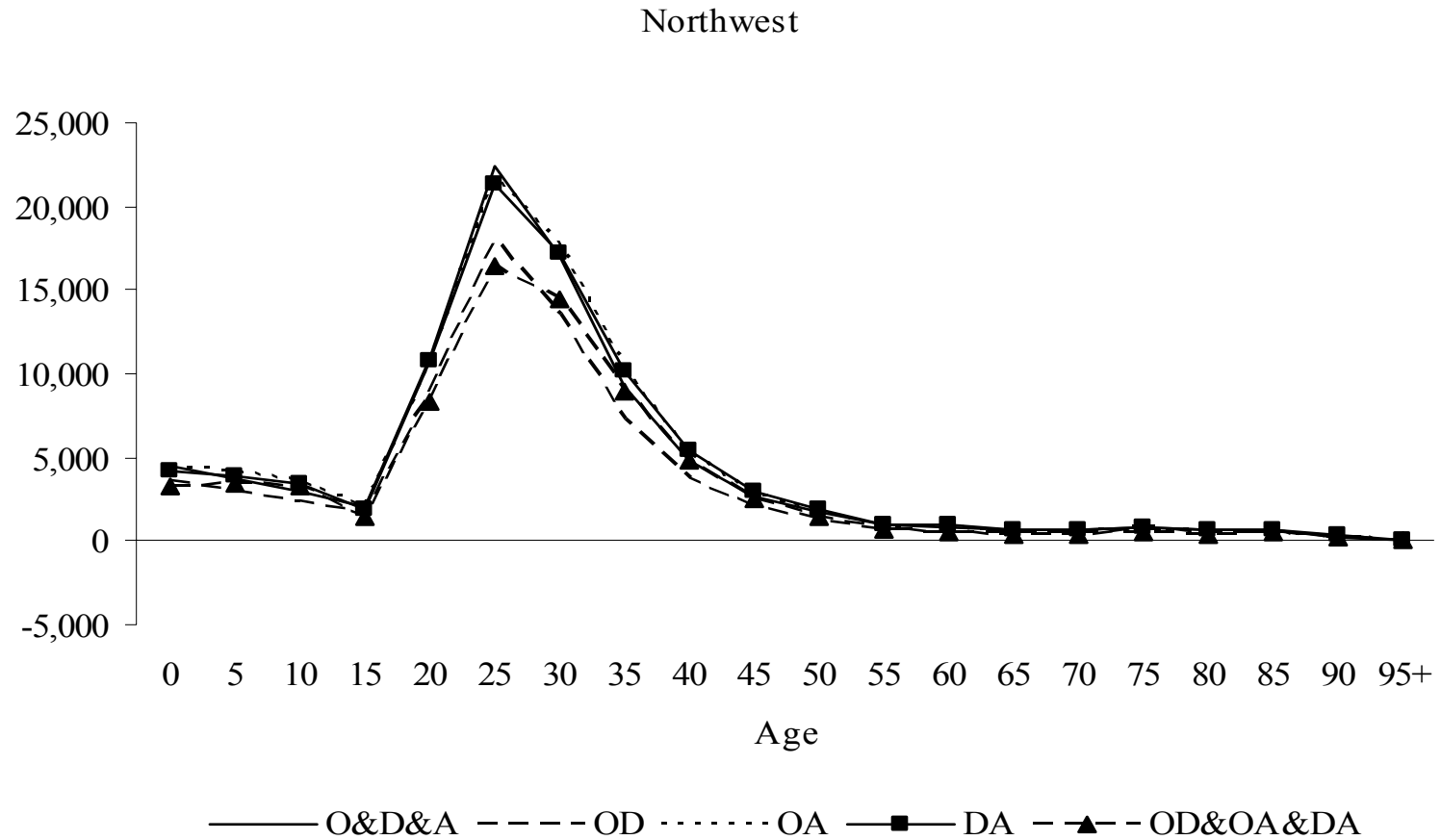


Islands



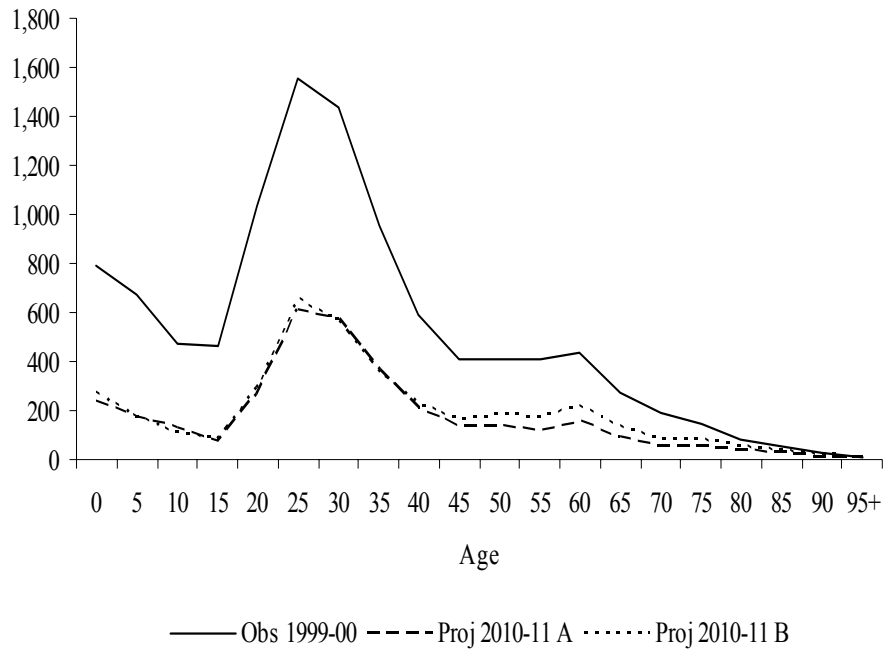
- Obs. 1999-00
- - - O
- ⋯ D
- A
- -▲- O&D
- ⋯◆⋯ O&D&A

# Projected 2010 net migration in Italy in the Northwest according various scenarios

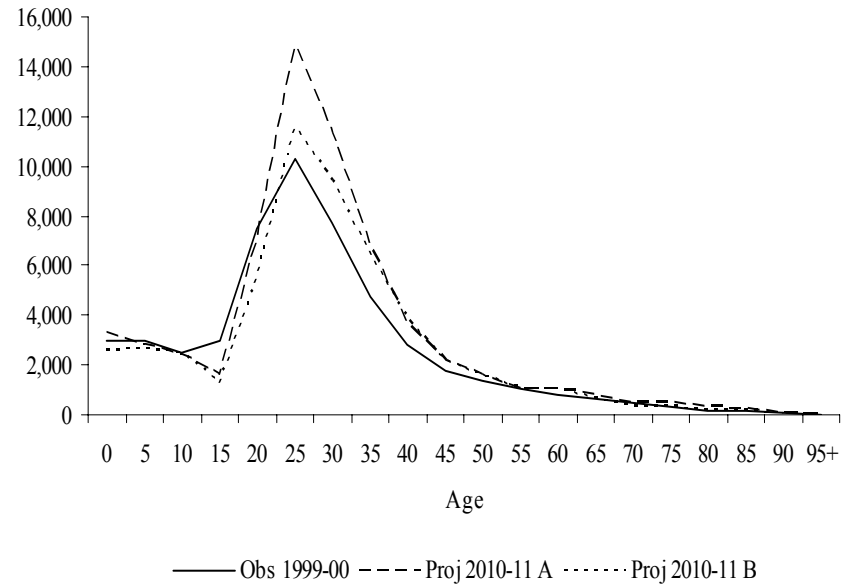


# Observed (1999-00) and projected (2010-11) Northwest to Islands and Islands to Northwest interregional migration flows: Main effects model (A), and two-way interaction model (B)

Northwest-Islands



Islands-Northwest



# Summary

- Most of the change in the age and spatial structures over the last two decades have occurred in the 1990s
- Increase of the spatial interactions between the southern regions and the other regions
- Larger presence of younger labor ages and retirement ages, respectively in the out-migration from the southern regions and in-migration to the same regions
- More migration gains for the Northern and Central regions and more migration losses for the Southern regions are projected in the 2010-2011