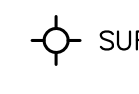

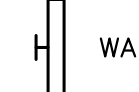
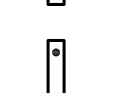
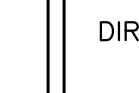
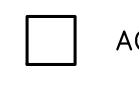
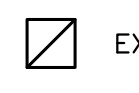


**1**  
**A-4** LOWER FLOOR RCP  
SCALE: 1/4" = 1'-0"

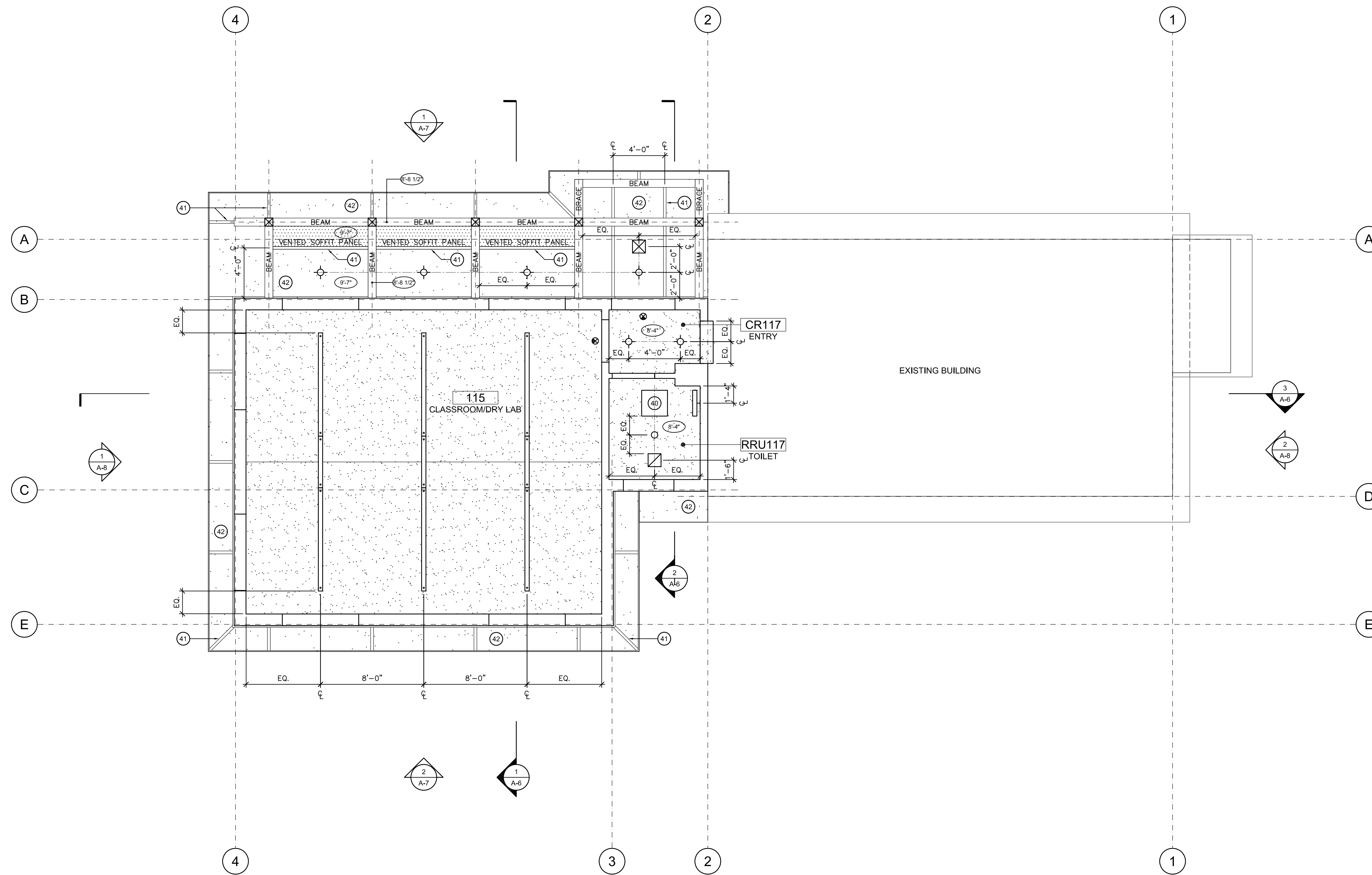
WORK NOTES					
1 APPROXIMATE LIMIT OF EXISTING DIRT ROAD	8 EXISTING EMERGENCY SHOWER (ES)	15 OUTLINE OF NEW BUILDING ADDITION	22 CONCRETE RAMP	29 PAINTED STEEL RAIL	36 PAINTED STEEL GUARDRAIL
2 EXISTING EXTERIOR STEPS TO REMAIN	9 REMOVE EXISTING EXTERIOR DOOR AND FRAME (A4)	16 NEW ELECTRICAL PANEL	23 CONCRETE CURB	30 LINE OF NEW ROOF ABOVE	37 RECESSED GALVANIZED METAL GRATE - SEE 1/A-9
3 EXISTING ELECTRICAL METER TO REMAIN	10 REMOVE EXISTING WINDOWS AND FRAMES (A2)	17 REPLACE EXISTING WINDOWS WITH NEW FIBERGLASS WINDOWS (A2)	24 CONCRETE STEPS	31 PORCH ROOF BELOW	38 ACCESSIBLE, SURFACE MOUNTED FIRE EXTINGUISHER CABINET
4 EXISTING ELECTRICAL PANELS TO REMAIN	11 REMOVE ALL EXISTING VCT FLOORING (A3)	18 REPLACE EXISTING VCT FLOORING WITH NEW (A3)	25 CONCRETE COLUMN FOOTING	32 NEW OPENING IN EXISTING EXTERIOR WALL FOR NEW DOOR	39 LANDSCAPE ITEMS - SEE GENERAL NOTE #2
5 EXISTING EQUIPMENT TO REMAIN	12 REMOVE EXISTING STORAGE SHED DOORS (A1)	19 NEW 2x6 EXTERIOR WALL INFILL AT EXISTING DOOR DEMOLITION (A1)	26 CONCRETE PAD	33 COUNTERFORT - RE: STRUCTURAL	40 ATTIC ACCESS PANEL
6 EXISTING STORAGE SHED TO REMAIN	13 LINE OF EXISTING ROOF ABOVE	20 REPLACE EXISTING DOOR WITH NEW FIBERGLASS DOOR & FRAME (A4)	27 WOOD COLUMN	34 PAINT EXISTING CONCRETE FOUNDATION WALL (A5)	41 CEMENTITIOUS TRIM BATTEN, TYP.
7 EXISTING EMERGENCY EYEWASH (EW)	14 REMOVE EXISTING ROOF OVERHANG BACK TO FACE OF EXISTING WEST WALL	21 CONCRETE SITE WALL	28 WOOD BEAM ABOVE	35 CONTINUOUS RIDGE VENT	42 CEMENTITIOUS SOFFIT PANEL(S) (VENTED WHERE INDICATED)

GENERAL NOTES	
1. CONTRACTOR TO FIELD VERIFY DIMENSIONS AT ALL EXISTING CONDITIONS	
2. 1-HOUR RATED CEILING AT ENTRY CR117	
3. CONTRACTOR TO VERIFY MANUFACTURER'S RECOMMENDED DETAILS FOR EXTERIOR CEMENTITIOUS SOFFIT PANELS AND TRIM	
4. SEE FINISH SCHEDULE ON SHEET A-11 FOR INTERIOR CEILING FINISH INFORMATION	
5. UNIVERSITY OF COLORADO STANDARDS SHALL APPLY TO ALL WORK EXCEPT WHERE VARIANCES ARE PRE-APPROVED BY UNIVERSITY OF COLORADO PROJECT MANAGEMENT	

LEGEND	
	SURFACE MOUNTED LIGHT FIXTURE
	RECESSED LIGHT FIXTURE
	WALL MOUNTED LIGHT FIXTURE
	DIRECT/INDIRECT LIGHT FIXTURE
	CEILING MOUNTED EXIT LIGHT
	ACCESS PANEL
	EXHAUST FAN

Issue	Date
50 % Construction Documents	June 15 2010
100 % Construction Documents	July 19 2010
Bld Documents	August 04 2010

Project Number:	004591
Drawn By:	SRG
Reviewed By:	CDS
Approved By:	JHS



1  
A-5  
**UPPER FLOOR RCP**  
SCALE: 1/4" = 1'-0"

WORK NOTES					
1 APPROXIMATE LIMIT OF EXISTING DIRT ROAD	8 EXISTING EMERGENCY SHOWER (ES)	15 OUTLINE OF NEW BUILDING ADDITION	22 CONCRETE RAMP	29 PAINTED STEEL RAIL	36 PAINTED STEEL GUARDRAIL
2 EXISTING EXTERIOR STEPS TO REMAIN	9 REMOVE EXISTING EXTERIOR DOOR AND FRAME (A4)	16 NEW ELECTRICAL PANEL	23 CONCRETE CURB	30 LINE OF NEW ROOF ABOVE	37 RECESSED GALVANIZED METAL GRATE - SEE 1/A-9
3 EXISTING ELECTRICAL METER TO REMAIN	10 REMOVE EXISTING WINDOWS AND FRAMES (A2)	17 REPLACE EXISTING WINDOWS WITH NEW FIBERGLASS WINDOWS (A2)	24 CONCRETE STEPS	31 PORCH ROOF BELOW	38 ACCESSIBLE, SURFACE MOUNTED FIRE EXTINGUISHER CABINET
4 EXISTING ELECTRICAL PANELS TO REMAIN	11 REMOVE ALL EXISTING VCT FLOORING (A3)	18 REPLACE EXISTING VCT FLOORING WITH NEW (A3)	25 CONCRETE COLUMN FOOTING	32 NEW OPENING IN EXISTING EXTERIOR WALL FOR NEW DOOR	39 LANDSCAPE ITEMS - SEE GENERAL NOTE #2
5 EXISTING EQUIPMENT TO REMAIN	12 REMOVE EXISTING STORAGE SHED DOORS (A1)	19 NEW 2x6 EXTERIOR WALL INFILL AT EXISTING DOOR DEMOLITION (A1)	26 CONCRETE PAD	33 COUNTERFORT - RE: STRUCTURAL	40 ATTIC ACCESS PANEL
6 EXISTING STORAGE SHED TO REMAIN	13 LINE OF EXISTING ROOF ABOVE	20 REPLACE EXISTING DOOR WITH NEW FIBERGLASS DOOR & FRAME (A4)	27 WOOD COLUMN	34 PAINT EXISTING CONCRETE FOUNDATION WALL (A5)	41 CEMENTITIOUS TRIM BATTEN, TYP.
7 EXISTING EMERGENCY EYEWASH (EW)	14 REMOVE EXISTING ROOF OVERHANG BACK TO FACE OF EXISTING WEST WALL	21 CONCRETE SITE WALL	28 WOOD BEAM ABOVE	35 CONTINUOUS RIDGE VENT	42 CEMENTITIOUS SOFFIT PANEL(S) (VENTED WHERE INDICATED)

GENERAL NOTES	
1. CONTRACTOR TO FIELD VERIFY DIMENSIONS AT ALL EXISTING CONDITIONS	
2. 1-HOUR RATED CEILING AT ENTRY CR117	
3. CONTRACTOR TO VERIFY MANUFACTURER'S RECOMMENDED DETAILS FOR EXTERIOR CEMENTITIOUS SOFFIT PANELS AND TRIM	
4. SEE FINISH SCHEDULE ON SHEET A-11 FOR INTERIOR CEILING FINISH INFORMATION	
5. UNIVERSITY OF COLORADO STANDARDS SHALL APPLY TO ALL WORK EXCEPT WHERE VARIANCES ARE PRE-APPROVED BY UNIVERSITY OF COLORADO PROJECT MANAGEMENT	
6. INSTALL R-30 BATT INSULATION ABOVE ENTIRE CEILING AREAS AT ROOMS CR-117 AND RRU-117	

LEGEND	
	SURFACE MOUNTED LIGHT FIXTURE
	RECESSED LIGHT FIXTURE
	WALL MOUNTED LIGHT FIXTURE
	DIRECT/INDIRECT LIGHT FIXTURE
	CEILING MOUNTED EXIT LIGHT
	ACCESS PANEL
	EXHAUST FAN
	SUPPLY AIR GRILLE

Issue	Date
50 % Construction Documents	June 15 2010
100 % Construction Documents	July 19 2010
Bid Documents	August 04 2010
Revised per CU Comments	August 19 2010

Project Number: 004591  
 Drawn By: SRG  
 Reviewed By: CDS  
 Approved By: JHS

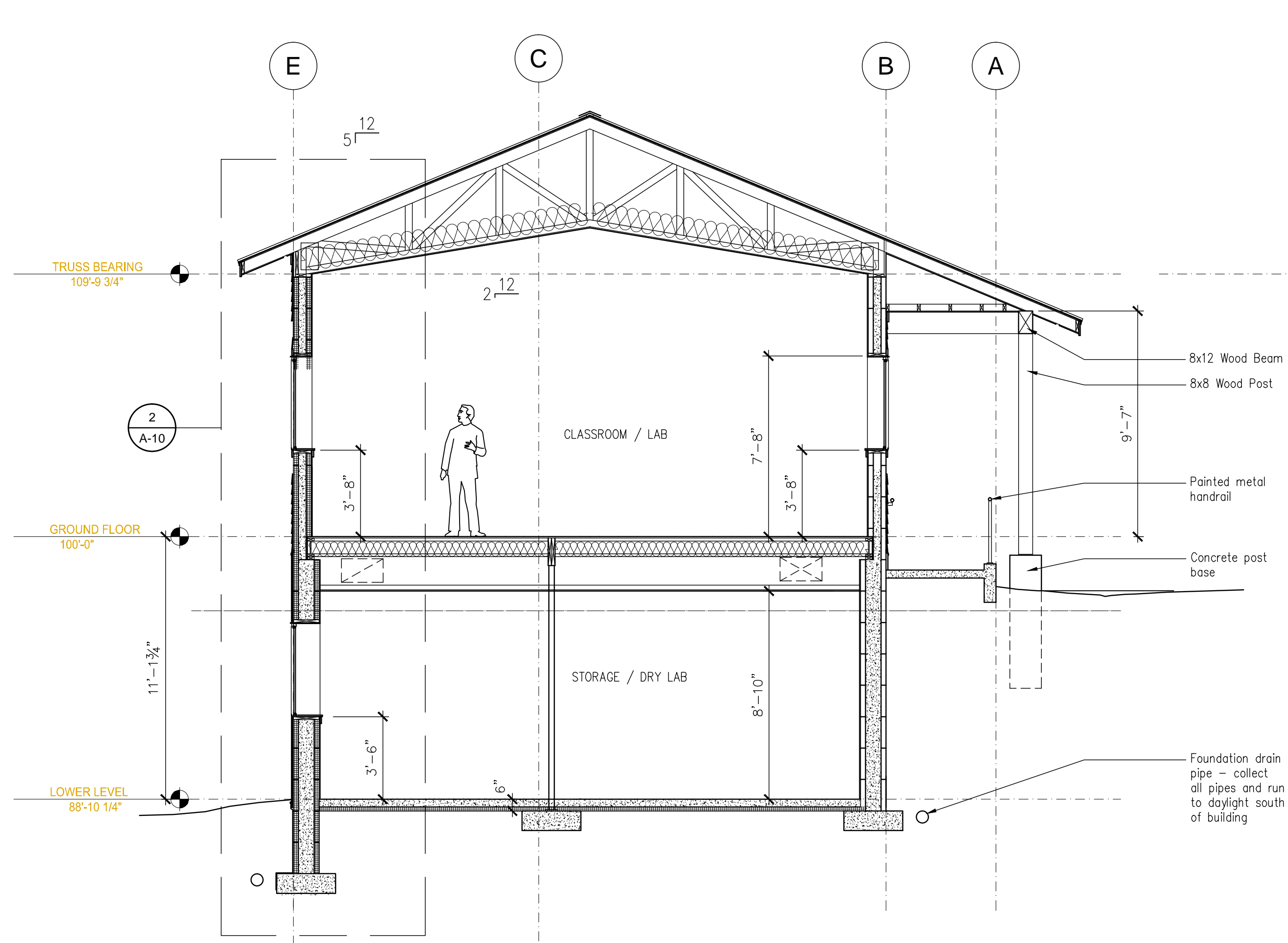


**Kiowa Lab Addition**  
**PR 004591**  
University of Colorado  
Mountain Research Station  
750 County Road 116

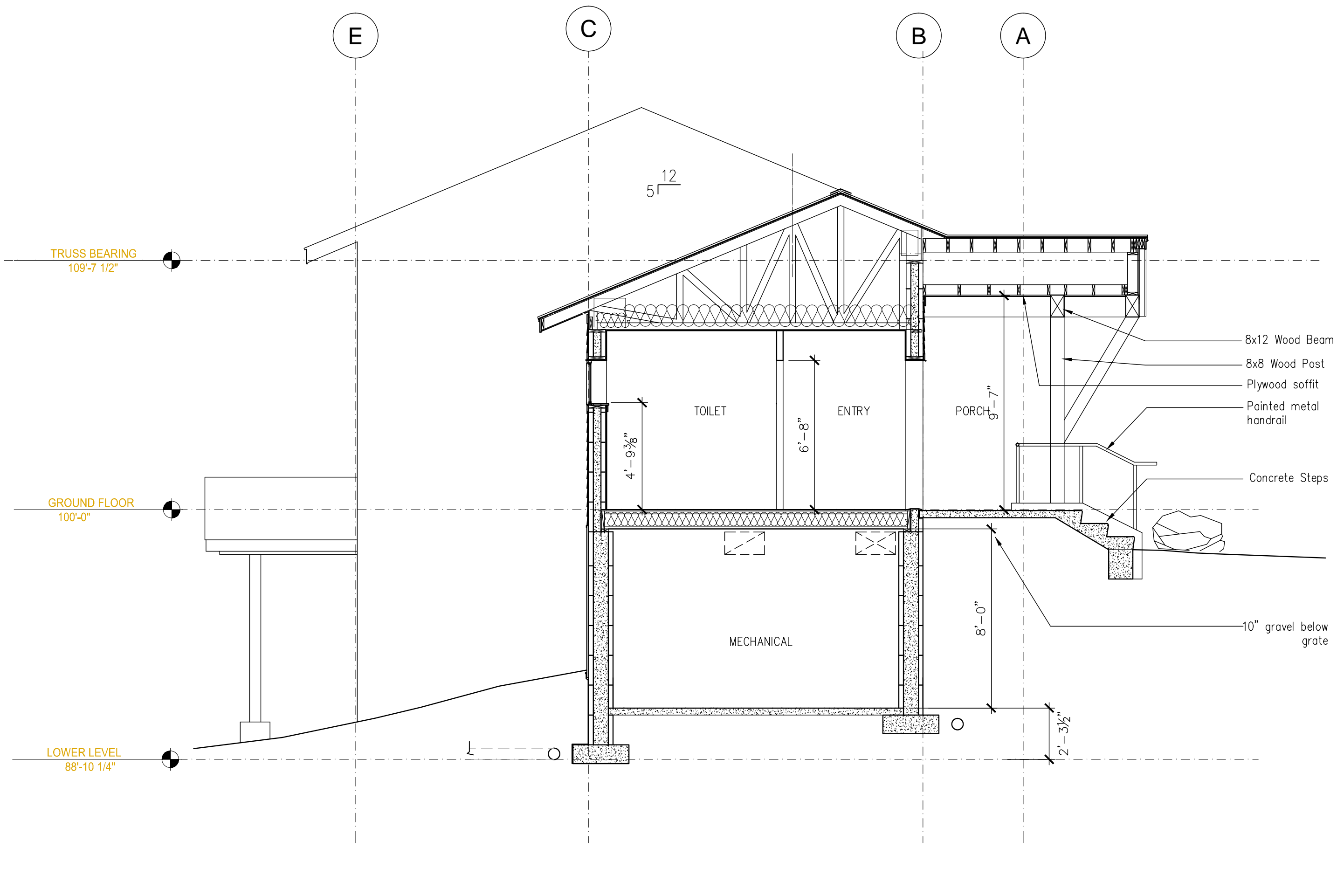
**Architect / Civil Engineer**  
Diversified Consulting Solutions, Inc.  
4100 West 107th Drive  
Westminster, CO 80031  
Telephone: (303) 918-7802  
FAX: (303) 600-8020

**Structural Engineer**  
Jeff Hunsicker, PE  
2835 Stuart St.  
Denver, CO 80212  
Telephone: (720) 560-9646  
FAX: (303) 477-3931

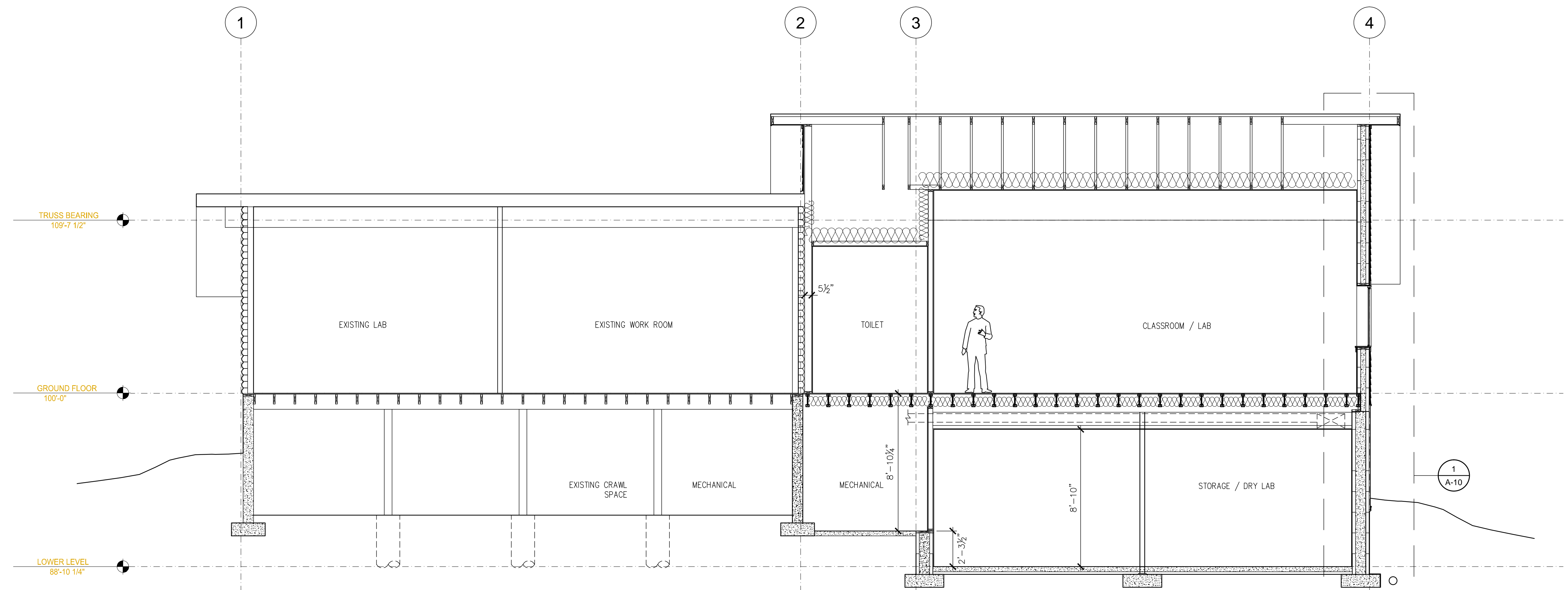
**Mechanical / Plumbing / Electrical Engineer**  
MEP Engineering, Inc.  
3565 S. Yosemite St.  
Denver, CO 80237  
Telephone: (303) 936-1633  
FAX: (303) 934-3299



**1 BUILDING SECTION**  
SCALE: 1/4" = 1'-0"



**2 BUILDING SECTION**  
SCALE: 1/4" = 1'-0"



**3 BUILDING SECTION**  
SCALE: 1/4" = 1'-0"

Issue	Date
50 % Construction Documents	June 15 2010
100 % Construction Documents	July 19 2010
BID SET	August 4, 2010

Project Number: 004591  
 Drawn By: CDS  
 Reviewed By: CDS  
 Approved By: JHS

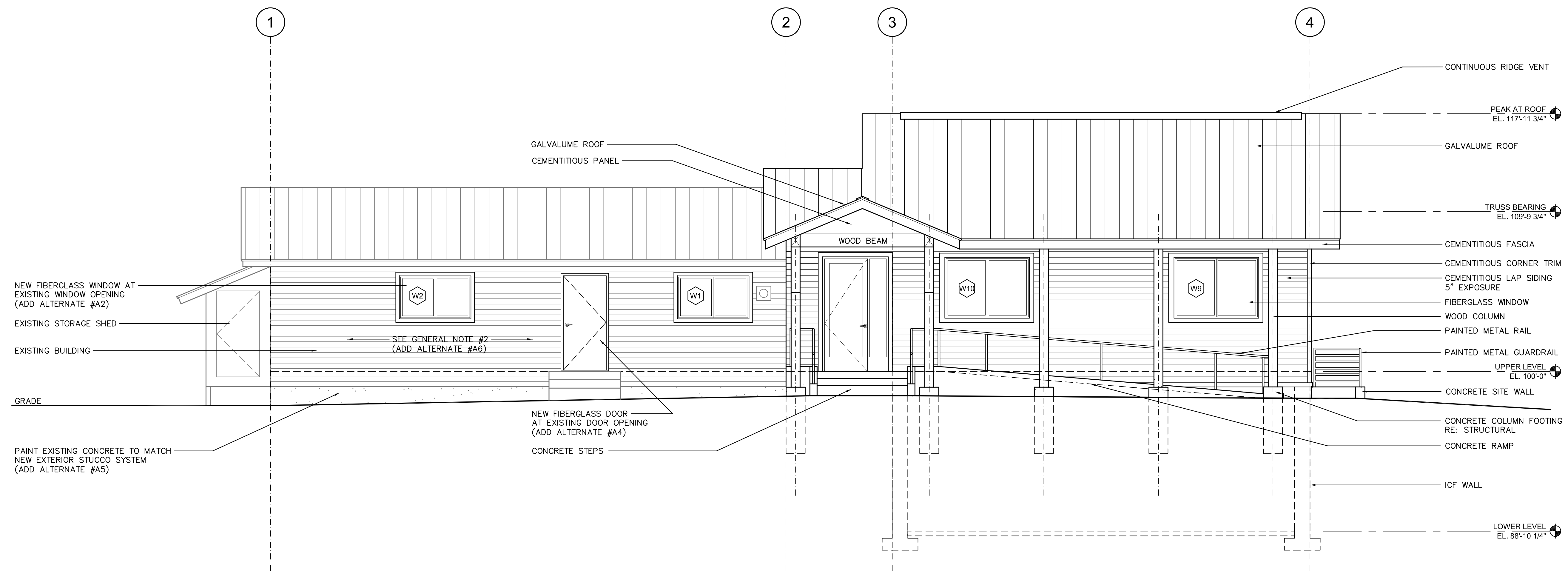


**Kiowa Lab Addition**  
**PR 004591**  
 University of Colorado  
 Mountain Research Station  
 750 County Road 116

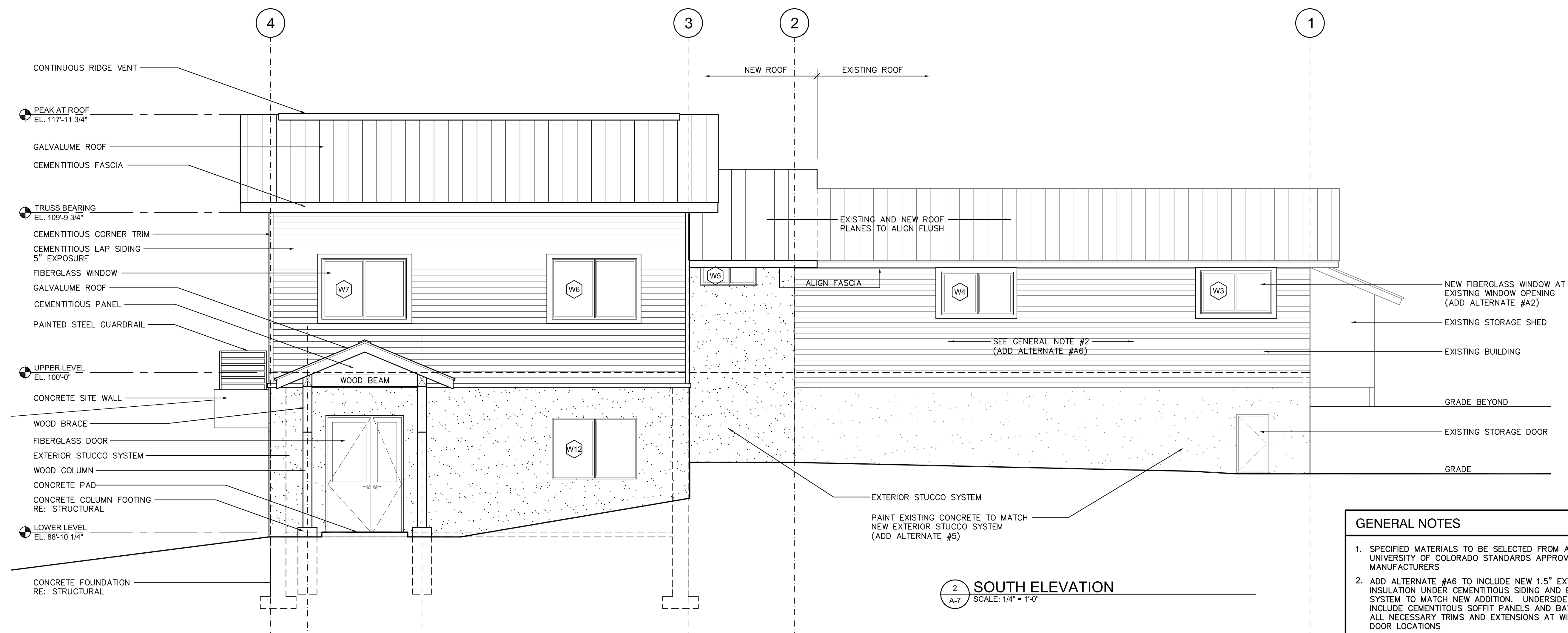
**Architect / Civil Engineer**  
 Diversified Consulting Solutions, Inc.  
 4100 West 107th Drive  
 Westminster, CO 80031  
 Telephone: (303) 618-7802  
 FAX: (303) 600-8020

**Structural Engineer**  
 Jeff Hunsicker, PE  
 2635 Stuart St.  
 Denver, CO 80212  
 Telephone: (720) 560-9646  
 FAX: (303) 477-3931

**Mechanical / Plumbing / Electrical Engineer**  
 MEP Engineering, Inc.  
 3565 S. Yosemite St.  
 Denver, CO 80237  
 Telephone: (303) 936-1633  
 FAX: (303) 934-3299



**1 NORTH ELEVATION**  
 SCALE: 1/4" = 1'-0"



**2 SOUTH ELEVATION**  
 SCALE: 1/4" = 1'-0"

- GENERAL NOTES**
- SPECIFIED MATERIALS TO BE SELECTED FROM AMONG UNIVERSITY OF COLORADO STANDARDS APPROVED MANUFACTURERS
  - ADD ALTERNATE #A6 TO INCLUDE NEW 1.5" EXTERIOR RIGID INSULATION UNDER CEMENTITIOUS SIDING AND EXTERIOR STUCCO SYSTEM TO MATCH NEW ADDITION. UNDERSIDE OF ROOF TO INCLUDE CEMENTITIOUS SOFFIT PANELS AND BATTENS. INCLUDE ALL NECESSARY TRIMS AND EXTENSIONS AT WINDOWS AND DOOR LOCATIONS

Issue	Date
50 % Construction Documents	June 15 2010
100 % Construction Documents	July 19 2010
Bld Documents	August 04 2010

Project Number: 004591  
 Drawn By: SRG  
 Reviewed By: CDS  
 Approved By: JHS



**Kiowa Lab Addition**  
**PR 004591**  
 University of Colorado  
 Mountain Research Station  
 750 County Road 116

**Architect / Civil Engineer**

Diversified Consulting Solutions, Inc.  
 4100 West 107th Drive  
 Westminster, CO 80031  
 Telephone: (303) 618-7802  
 FAX: (303) 600-8020

**Structural Engineer**

Jeff Hunsicker, PE  
 2635 Stuart St.  
 Denver, CO 80212  
 Telephone: (720) 560-9646  
 FAX: (303) 477-3931

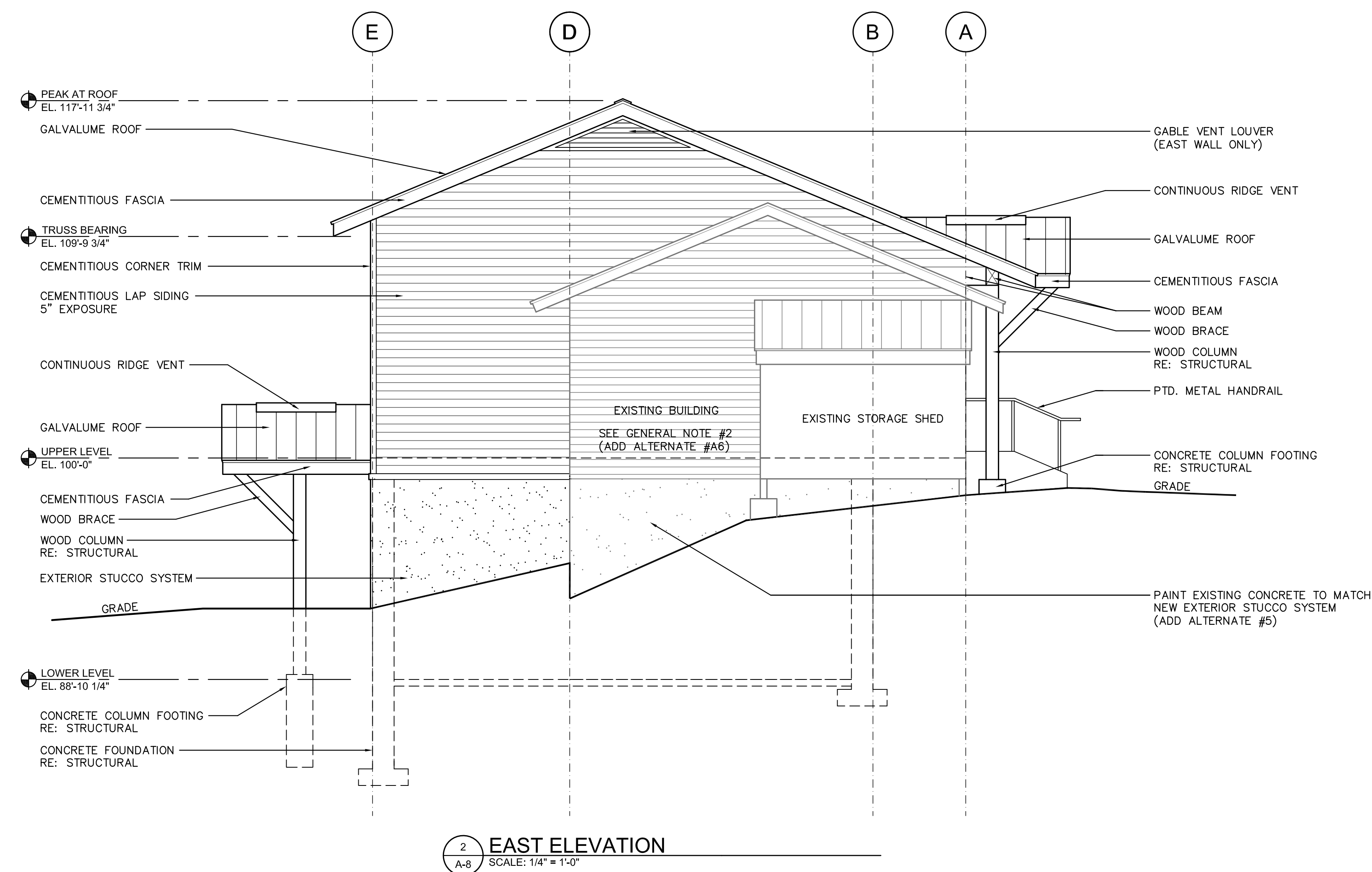
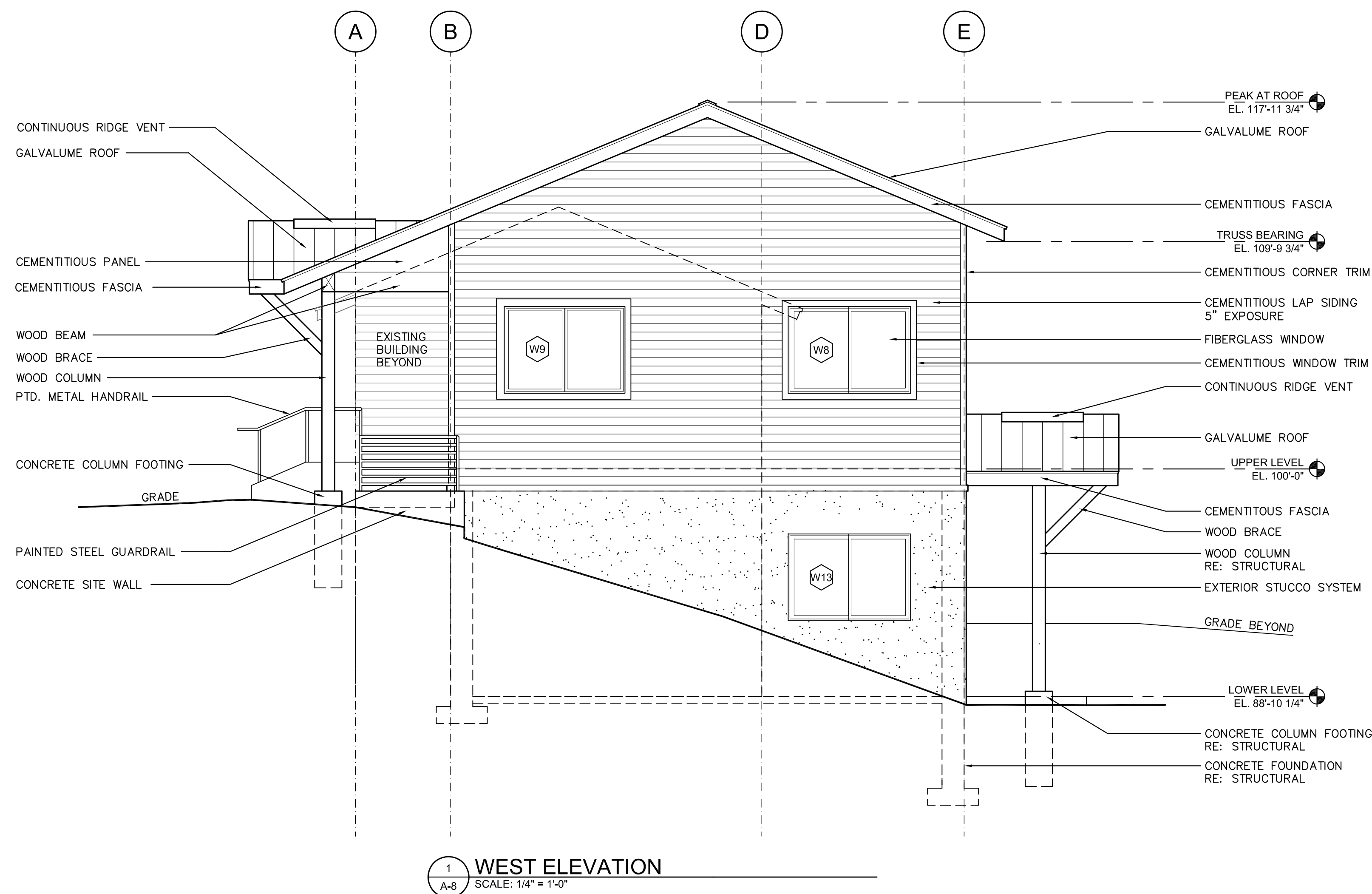
**Mechanical / Plumbing / Electrical Engineer**

MEP Engineering, Inc.  
 3565 S. Yosemite St.  
 Denver, CO 80237  
 Telephone: (303) 936-1633  
 FAX: (303) 934-3299

Issue	Date
50 % Construction Documents	June 15 2010
100 % Construction Documents	July 19 2010
Bid Documents	August 04 2010

Project Number: 004591  
 Drawn By: SRG  
 Reviewed By: CDS  
 Approved By: JHS

- GENERAL NOTES**
- SPECIFIED MATERIALS TO BE SELECTED FROM AMONG UNIVERSITY OF COLORADO STANDARDS APPROVED MANUFACTURERS
  - ADD ALTERNATE #A6 TO INCLUDE NEW 1.5" EXTERIOR RIGID INSULATION UNDER CEMENTITIOUS SIDING AND EXTERIOR STUCCO SYSTEM TO MATCH NEW ADDITION. UNDERSIDE OF ROOF TO INCLUDE CEMENTITIOUS SOFFIT PANELS AND BATTENS. INCLUDE ALL NECESSARY TRIMS AND EXTENSIONS AT WINDOWS AND DOOR LOCATIONS





**Architect / Civil Engineer**

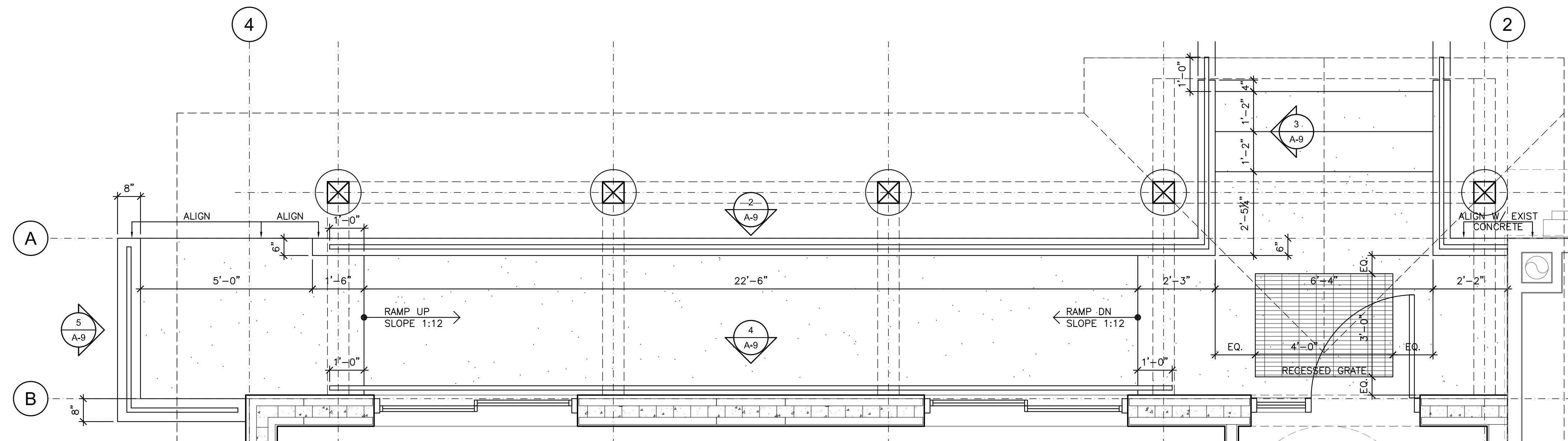
Diversified Consulting Solutions, Inc.  
4100 West 107th Drive  
Westminster, CO 80031  
Telephone: (303) 618-7802  
FAX: (303) 600-8020

**Structural Engineer**

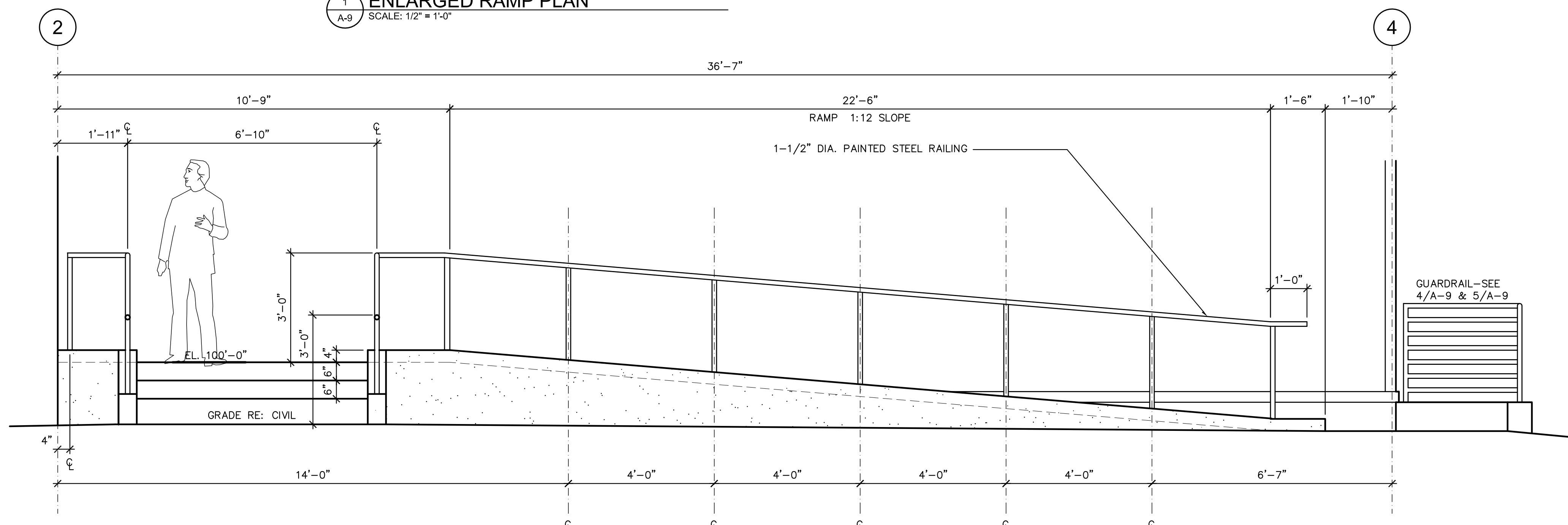
Jeff Hunsicker, PE  
2635 Stuart St.  
Denver, CO 80212  
Telephone: (720) 560-9646  
FAX: (303) 477-3931

**Mechanical / Plumbing / Electrical Engineer**

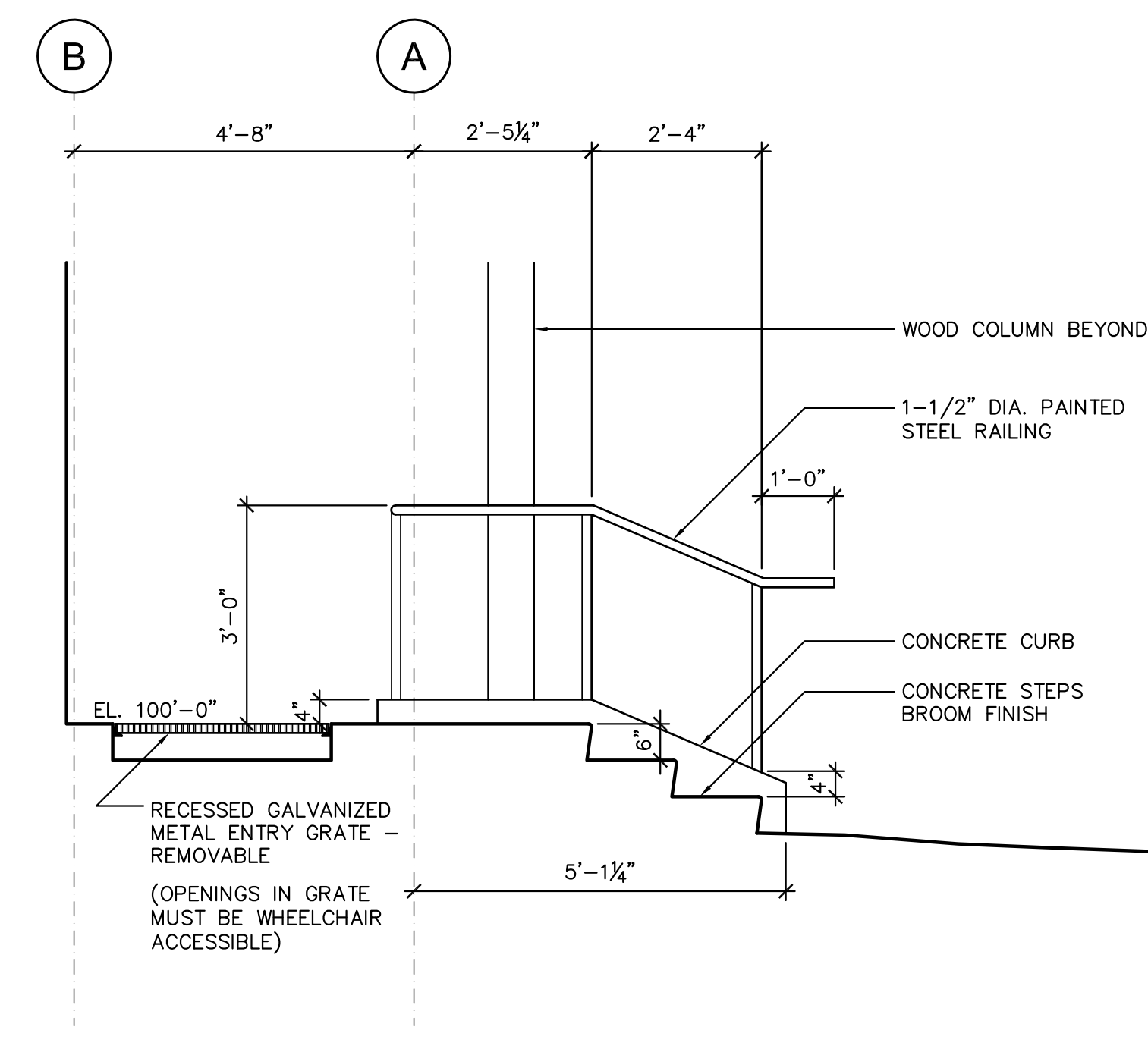
MEP Engineering, Inc.  
3565 S. Yosemite St.  
Denver, CO 80237  
Telephone: (303) 936-1633  
FAX: (303) 934-3299



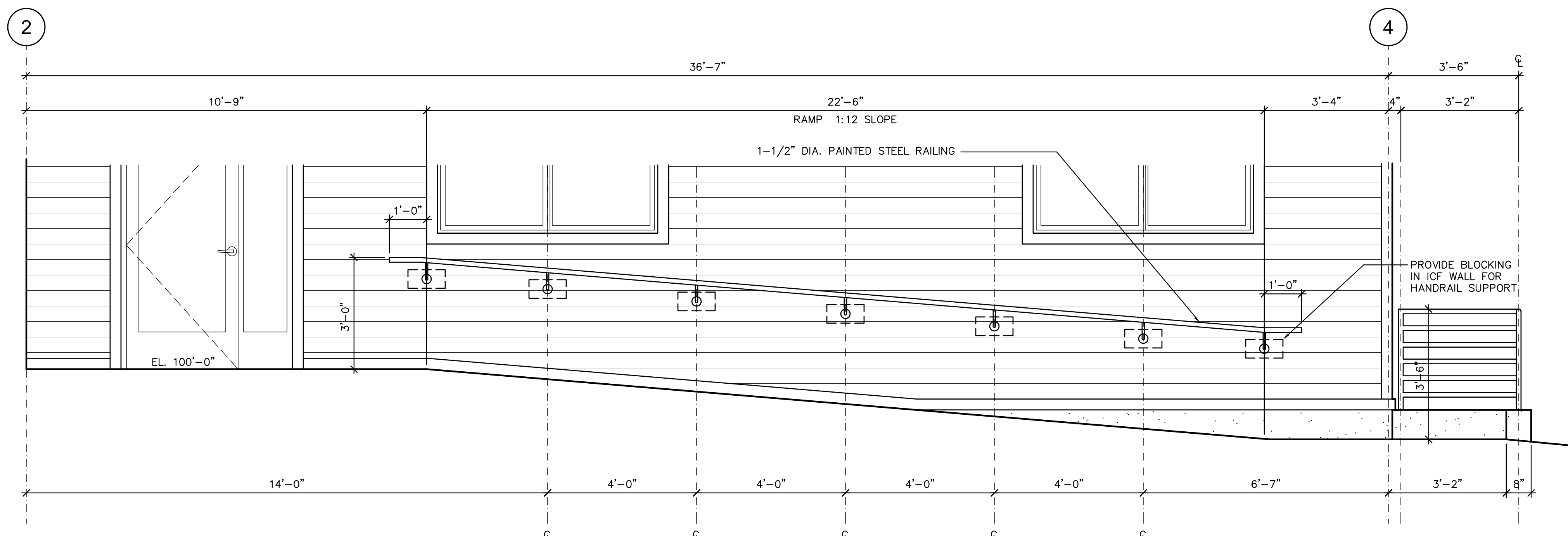
**1 ENLARGED RAMP PLAN**  
SCALE: 1/2" = 1'-0"



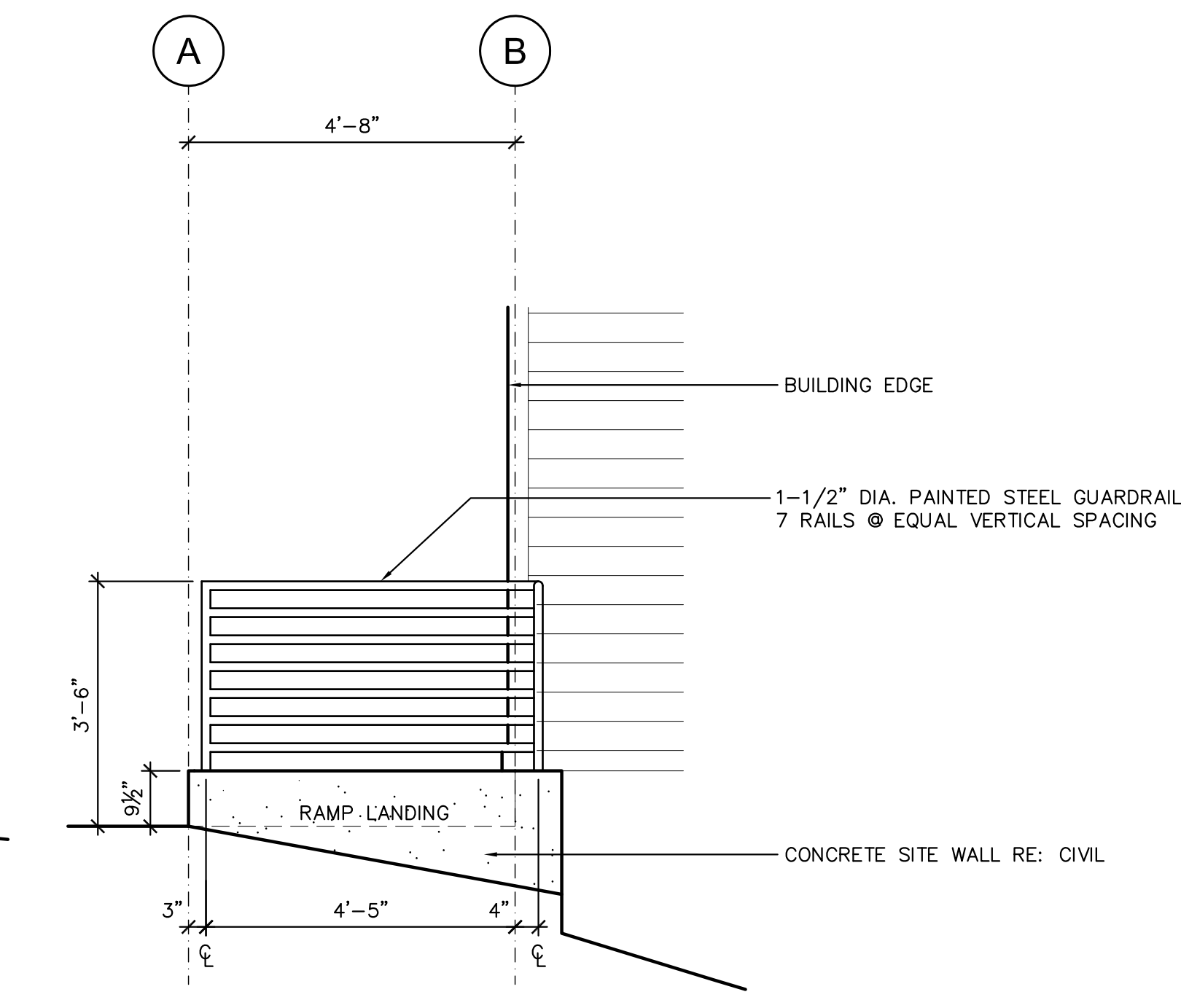
**2 ENLARGED RAMP ELEVATION**  
SCALE: 1/2" = 1'-0"



**3 ENLARGED RAMP ELEVATION**  
SCALE: 1/2" = 1'-0"



**4 ENLARGED RAMP ELEVATION**  
SCALE: 1/2" = 1'-0"



**5 ENLARGED RAMP ELEVATION**  
SCALE: 1/2" = 1'-0"

Issue	Date
50 % Construction Documents	June 15 2010
100 % Construction Documents	July 19 2010
Bld Documents	August 04 2010

Project Number: 004591  
 Drawn By: SRG  
 Reviewed By: CDS  
 Approved By: JHS



**Facilities Management**  
University of Colorado at Boulder

**Kiowa Lab Addition**  
**PR 004591**  
University of Colorado  
Mountain Research Station  
750 County Road 116

**Architect / Civil Engineer**

Diversified Consulting Solutions, Inc.  
4100 West 107th Drive  
Westminster, CO 80031  
Telephone: (303) 816-7802  
FAX: (303) 600-8020

**Structural Engineer**

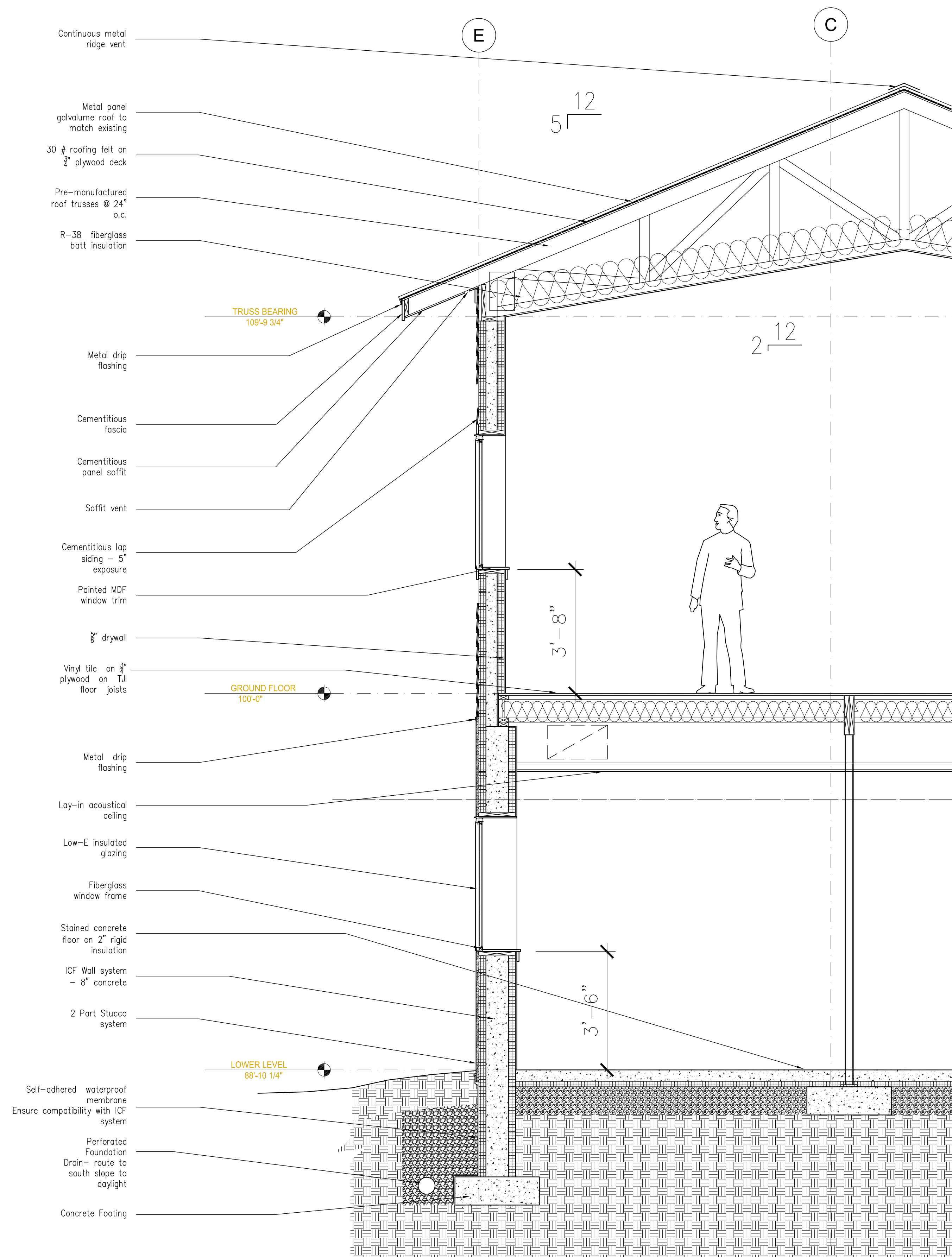
Jeff Hunsicker, PE  
2635 Stuart St.  
Denver, CO 80212  
Telephone: (720) 560-9646  
FAX: (303) 477-3931

**Mechanical / Plumbing / Electrical Engineer**

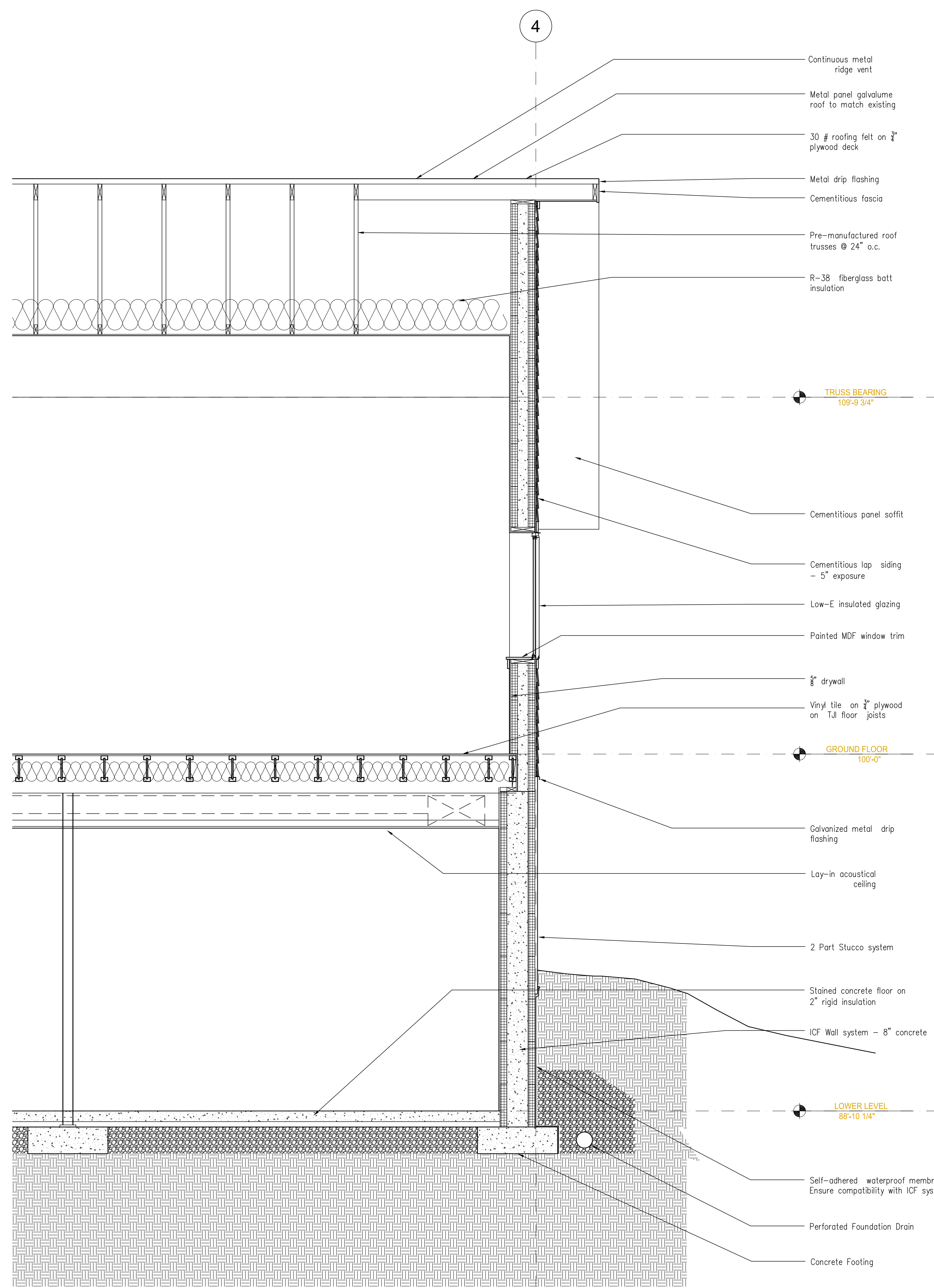
MEP Engineering, Inc.  
3565 S. Yosemite St.  
Denver, CO 80237  
Telephone: (303) 936-1633  
FAX: (303) 934-3299

Issue	Date
50 % Construction Documents	June 15, 2010
100 % Construction Documents	July 19, 2010
BID SET	August 4, 2010

Project Number: 004591  
Drawn By: CDS  
Reviewed By: CDS  
Approved By: JHS



**2 WALL SECTION**  
SCALE: 1/2" = 1'-0"



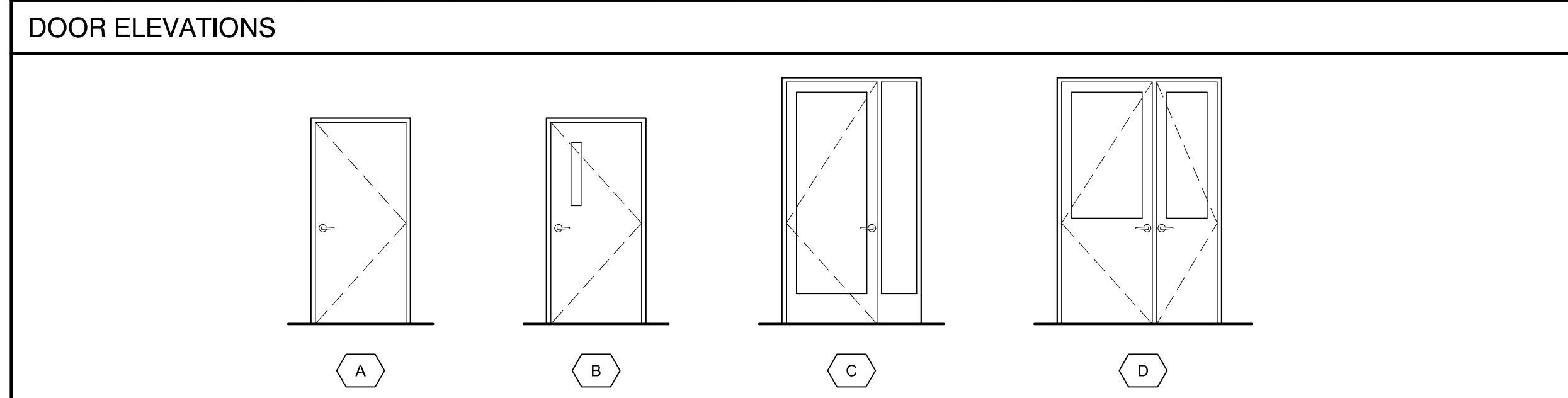
**1 WALL SECTION**  
SCALE: 1/2" = 1'-0"



### DOOR SCHEDULE

GENERAL NOTES:  
1: CONTRACTOR TO VERIFY ALL DIMENSIONS AT EXISTING DOOR OPENINGS FOR PROPOSED NEW CONDITIONS  
2: INCLUDE ALLOWANCE FOR UNIVERSITY OF COLORADO STANDARD DOOR HARDWARE AT ALL DOORS IN SCHEDULE  
3: PROVIDE DOOR BUMPS AT WALLS BEHIND DOORS  
3: PROVIDE TACTILE EXIT SIGNS AT DOORS 1B15-1, 115-1, CR117-1, AND 117A-2. PROVIDE ACCESSIBLE UNISEX TOILET SIGN AT DOOR RRU117-1.

ID #	TYPE	WIDTH	HEIGHT	THICK	MAT.	FINISH	ELEV.	GLAZ.	FRAME	RATING	SMOKE	CLOSER	NOTES
1B15-1	EXTERIOR	3'-0"	8'-0"	1-3/4"	FIBERGLASS	PAINT	D	CLEAR	FIBERGLASS	-	-	-	HALF LIGHT SAFETY GLAZING
1B15-2	EXTERIOR	2'-0"	8'-0"	1-3/4"	FIBERGLASS	PAINT	D	CLEAR	FIBERGLASS	-	-	-	HALF LIGHT SAFETY GLAZING
1B15A-1	INTERIOR	3'-0"	6'-8"	1-3/4"	WOOD-SOLID CORE	PAINT	A	-	WOOD	20 MIN.	YES	YES	-
115-1	INTERIOR	3'-0"	6'-8"	1-3/4"	WOOD-SOLID CORE	PAINT	B	WIRE	WOOD	20 MIN.	YES	YES	4"X25" SAFETY GLAZING (100 SQ. IN.)
CR117-1	EXTERIOR	3'-0"	8'-0"	1-3/4"	FIBERGLASS	PAINT	C	CLEAR	FIBERGLASS	-	-	-	FULL LIGHT SAFETY GLAZING
RRU117-1	INTERIOR	3'-0"	6'-8"	1-3/4"	WOOD-SOLID CORE	PAINT	A	-	WOOD	20 MIN.	YES	YES	FIELD VERIFY SIZE
117A-1	EXTERIOR	3'-0"	6'-8"	1-3/4"	FIBERGLASS	PAINT	A	-	FIBERGLASS	-	-	-	FIELD VERIFY SIZE
117A-2	INTERIOR	3'-0"	6'-8"	1-3/4"	WOOD-SOLID CORE	PAINT	B	WIRE	WOOD	20 MIN.	YES	YES	4"X25" SAFETY GLAZING (100 SQ. IN.)



### ROOM FINISH SCHEDULE

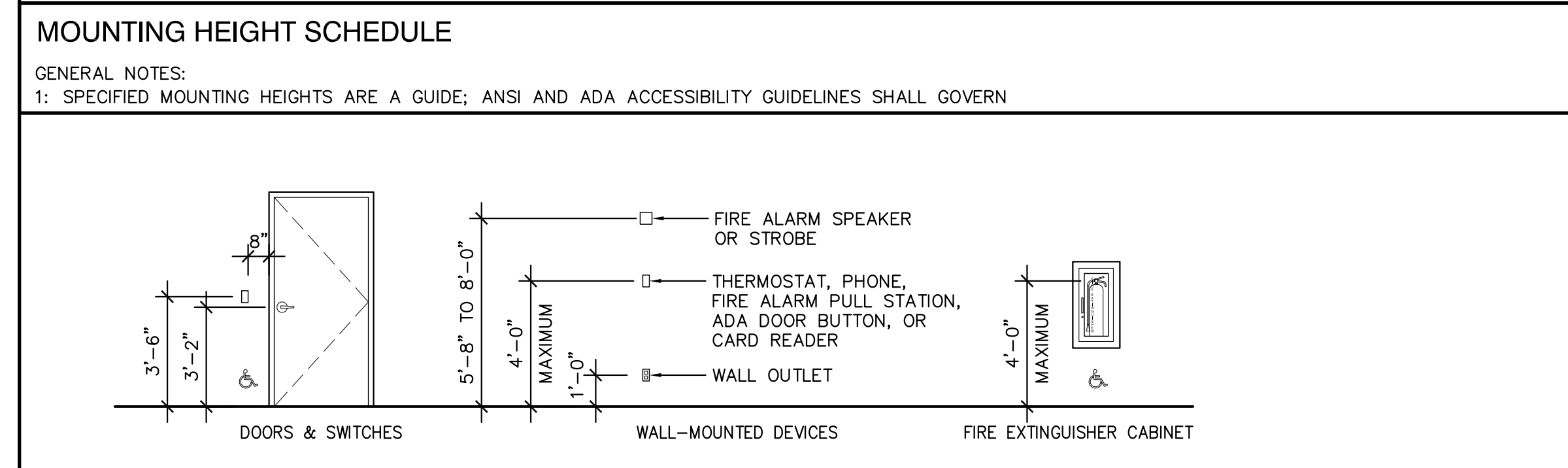
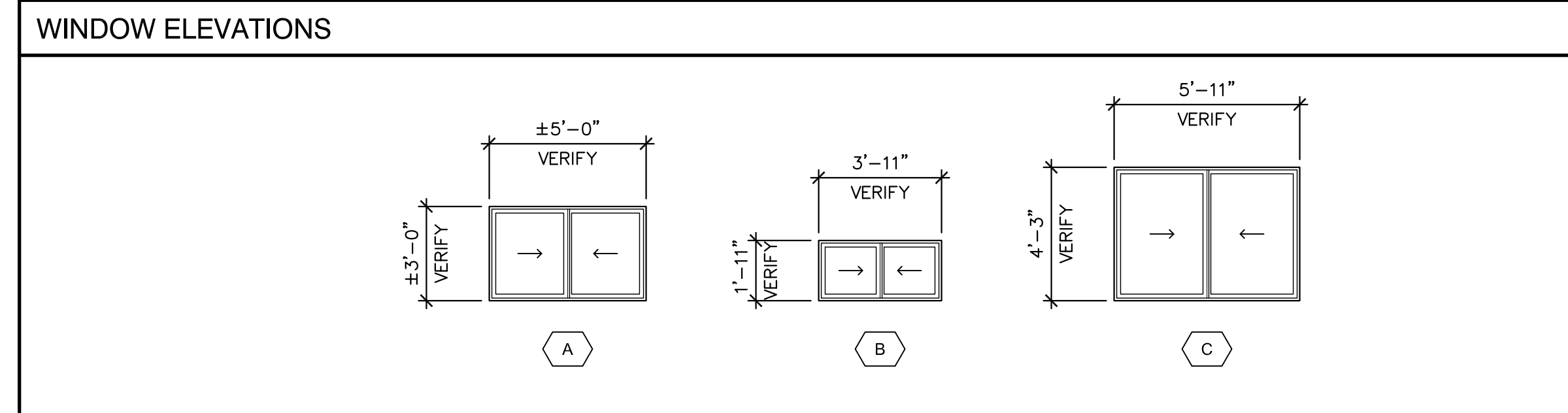
GENERAL NOTES:  
1: SPECIFIED MATERIALS TO BE SELECTED FROM AMONG UNIVERSITY OF COLORADO STANDARDS APPROVED MANUFACTURERS

ID #	ROOM NAME	FLOOR	BASE	WALLS-NORTH	WALLS-EAST	WALLS-SOUTH	WALLS-WEST	CEILING	NOTES
1B15	STORAGE/FUTURE DRY LAB	VCT	RESILIENT	GWB-PAINT	GWB-PAINT	GWB-PAINT	GWB-PAINT	ACT	ACT TILE-2X4 "SECOND LOOK"
1B15A	MECHANICAL	CONC	RESILIENT	GWB-PAINT	EXIST-CONC	GWB-PAINT	GWB-PAINT	NONE	SEALED CONCRETE FLOOR
1B17	EXISTING STORAGE	EXIST	EXIST	EXIST	EXIST	EXIST	EXIST	EXIST	-
1B17A	EXISTING MECHANICAL	EXIST	EXIST	EXIST	EXIST	EXIST	EXIST	EXIST	-
115	CLASSROOM/DRY LAB	VCT	RESILIENT	GWB-PAINT	GWB-PAINT	GWB-PAINT	GWB-PAINT	GWB-PAINT	-
CR117	ENTRY	VCT	RESILIENT	GWB-PAINT	GWB-PAINT	GWB-PAINT	GWB-PAINT	GWB-PAINT	-
RRU117	TOILET	VCT	RESILIENT	GWB-PAINT	GWB-PAINT	GWB-PAINT	GWB-PAINT	GWB-PAINT	-
117A	EXISTING LAB	VCT	RESILIENT	EXIST	EXIST	EXIST	EXIST	EXIST	REPLACE EXIST FLOOR/BASE
117B	EXISTING LAB	VCT	RESILIENT	EXIST	EXIST	EXIST	EXIST	EXIST	REPLACE EXIST FLOOR/BASE
117C	EXISTING WALK-IN COOLER	EXIST	EXIST	EXIST	EXIST	EXIST	EXIST	EXIST	REPLACE EXIST FLOOR/BASE
119	EXISTING STORAGE	EXIST	EXIST	EXIST	EXIST	EXIST	EXIST	EXIST	-

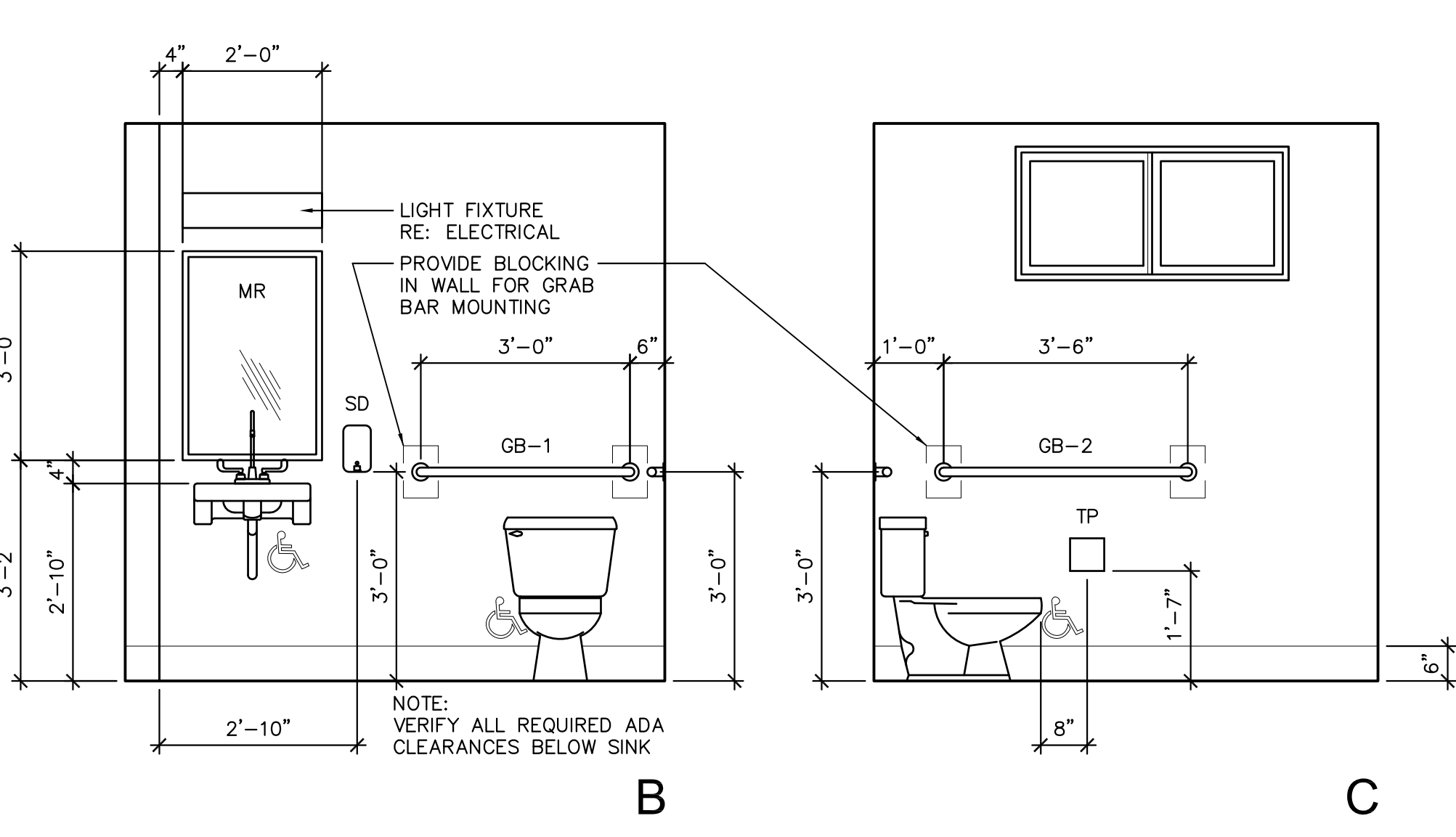
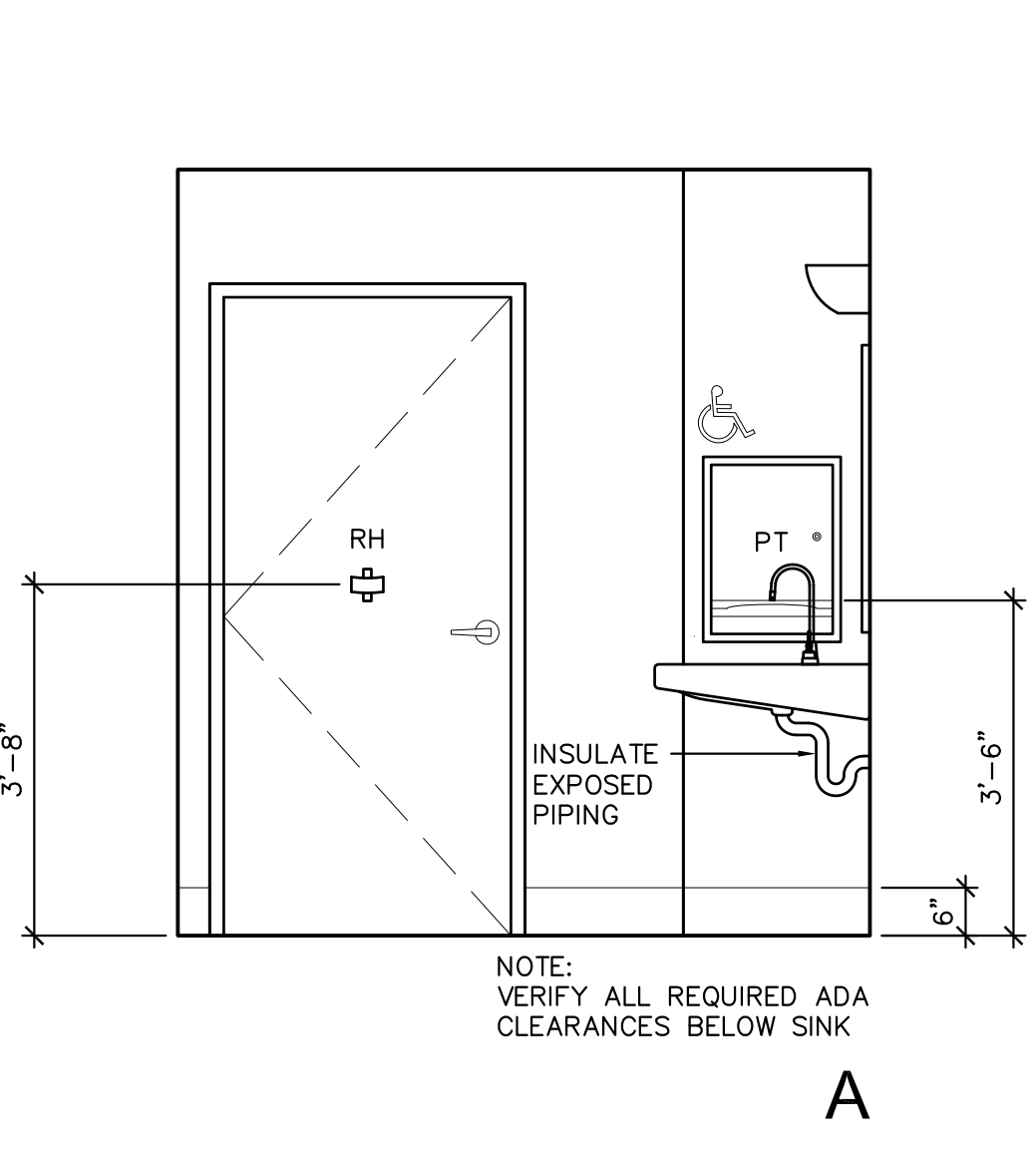
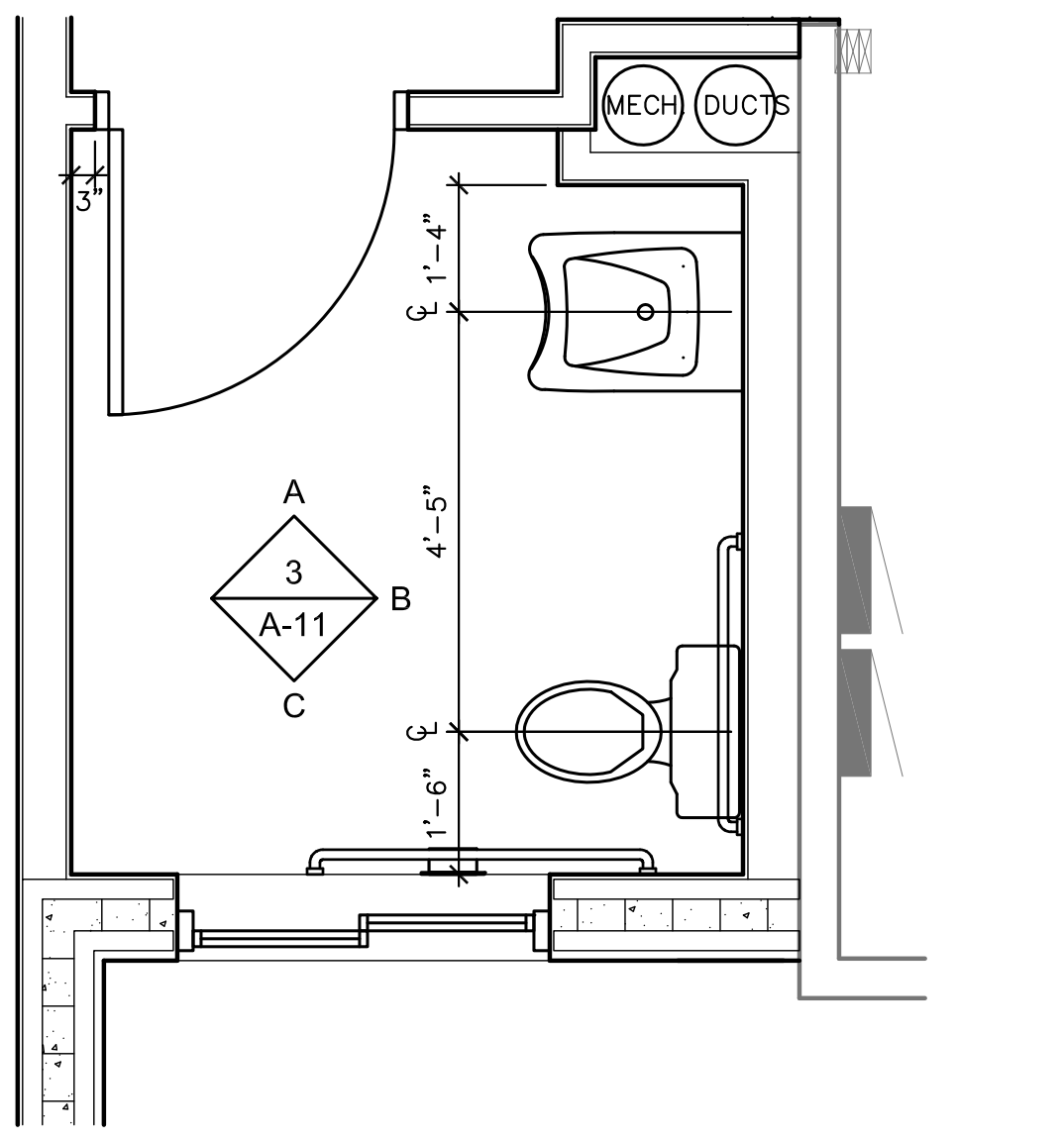
### WINDOW SCHEDULE

GENERAL NOTES:  
1: CONTRACTOR TO VERIFY ALL DIMENSIONS AT EXISTING WINDOW OPENINGS FOR PROPOSED NEW CONDITIONS  
2: ROUGH OPENING DIMENSIONS ASSUME 1/2" JOINT ALL SIDES - CONTRACTOR TO VERIFY WITH WINDOW AND ICF MANUFACTURER'S RECOMMENDED DETAILS  
3: VERIFY WINDOW HARDWARE TO MEET UNIVERSITY OF COLORADO STANDARD REQUIREMENTS  
3: INCLUDE PAINTED MDF SILLS AT ALL NEW WINDOW AND REPLACEMENT WINDOW LOCATIONS

ID #	TYPE	ROUGH OPENING		FRAME		MAT.	FINISH	ELEV.	GLAZ.	NOTES
		WIDTH	HEIGHT	WIDTH	HEIGHT					
1	SLIDING	VERIFY	VERIFY	±5'-0"	±3'-0"	FIBERGLASS	SMOOTH	A	TEMPERED/LOW-E COATING	REPLACE EXISTING WITH NEW; FIELD VERIFY
2	SLIDING	VERIFY	VERIFY	±5'-0"	±3'-0"	FIBERGLASS	SMOOTH	A	TEMPERED/LOW-E COATING	REPLACE EXISTING WITH NEW; FIELD VERIFY
3	SLIDING	VERIFY	VERIFY	±5'-0"	±3'-0"	FIBERGLASS	SMOOTH	A	TEMPERED/LOW-E COATING	REPLACE EXISTING WITH NEW; FIELD VERIFY
4	SLIDING	VERIFY	VERIFY	±5'-0"	±3'-0"	FIBERGLASS	SMOOTH	A	TEMPERED/LOW-E COATING	REPLACE EXISTING WITH NEW; FIELD VERIFY
5	SLIDING	4'-0"	2'-0"	3'-11"	1'-11"	FIBERGLASS	SMOOTH	B	TEMPERED/LOW-E COATING	VERIFY FRAME SIZE FOR ICF ROUGH OPENING
6	SLIDING	6'-0"	4'-4"	5'-11"	4'-3"	FIBERGLASS	SMOOTH	C	TEMPERED/LOW-E COATING	VERIFY FRAME SIZE FOR ICF ROUGH OPENING
7	SLIDING	6'-0"	4'-4"	5'-11"	4'-3"	FIBERGLASS	SMOOTH	C	TEMPERED/LOW-E COATING	VERIFY FRAME SIZE FOR ICF ROUGH OPENING
8	SLIDING	6'-0"	4'-4"	5'-11"	4'-3"	FIBERGLASS	SMOOTH	C	TEMPERED/LOW-E COATING	VERIFY FRAME SIZE FOR ICF ROUGH OPENING
9	SLIDING	6'-0"	4'-4"	5'-11"	4'-3"	FIBERGLASS	SMOOTH	C	TEMPERED/LOW-E COATING	VERIFY FRAME SIZE FOR ICF ROUGH OPENING
10	SLIDING	6'-0"	4'-4"	5'-11"	4'-3"	FIBERGLASS	SMOOTH	C	TEMPERED/LOW-E COATING	VERIFY FRAME SIZE FOR ICF ROUGH OPENING
11	SLIDING	6'-0"	4'-4"	5'-11"	4'-3"	FIBERGLASS	SMOOTH	C	TEMPERED/LOW-E COATING	VERIFY FRAME SIZE FOR ICF ROUGH OPENING
12	SLIDING	6'-0"	4'-4"	5'-11"	4'-3"	FIBERGLASS	SMOOTH	C	TEMPERED/LOW-E COATING	VERIFY FRAME SIZE FOR ICF ROUGH OPENING
13	SLIDING	6'-0"	4'-4"	5'-11"	4'-3"	FIBERGLASS	SMOOTH	C	TEMPERED/LOW-E COATING	VERIFY FRAME SIZE FOR ICF ROUGH OPENING



1 SCHEDULES  
A-11 NO SCALE



2 ENLARGED TOILET PLAN  
A-11 SCALE: 1/2" = 1'-0"

3 TOILET ELEVATIONS  
A-11 SCALE: 1/2" = 1'-0"

GENERAL NOTES:  
1: PROVIDE BLOCKING FOR SINK, GRAB BAR, AND MIRROR MOUNTING PER MANUFACTURER'S RECOMMENDATION.  
2: VERIFY BLOCKING REQUIREMENTS FOR OTHER ACCESSORIES PER MANUFACTURER'S RECOMMENDATION.  
3: VERIFY MOUNTING HEIGHTS WITH MANUFACTURER'S RECOMMENDATION AND CONFORMANCE WITH ANSI AND ADA ACCESSIBILITY GUIDELINES